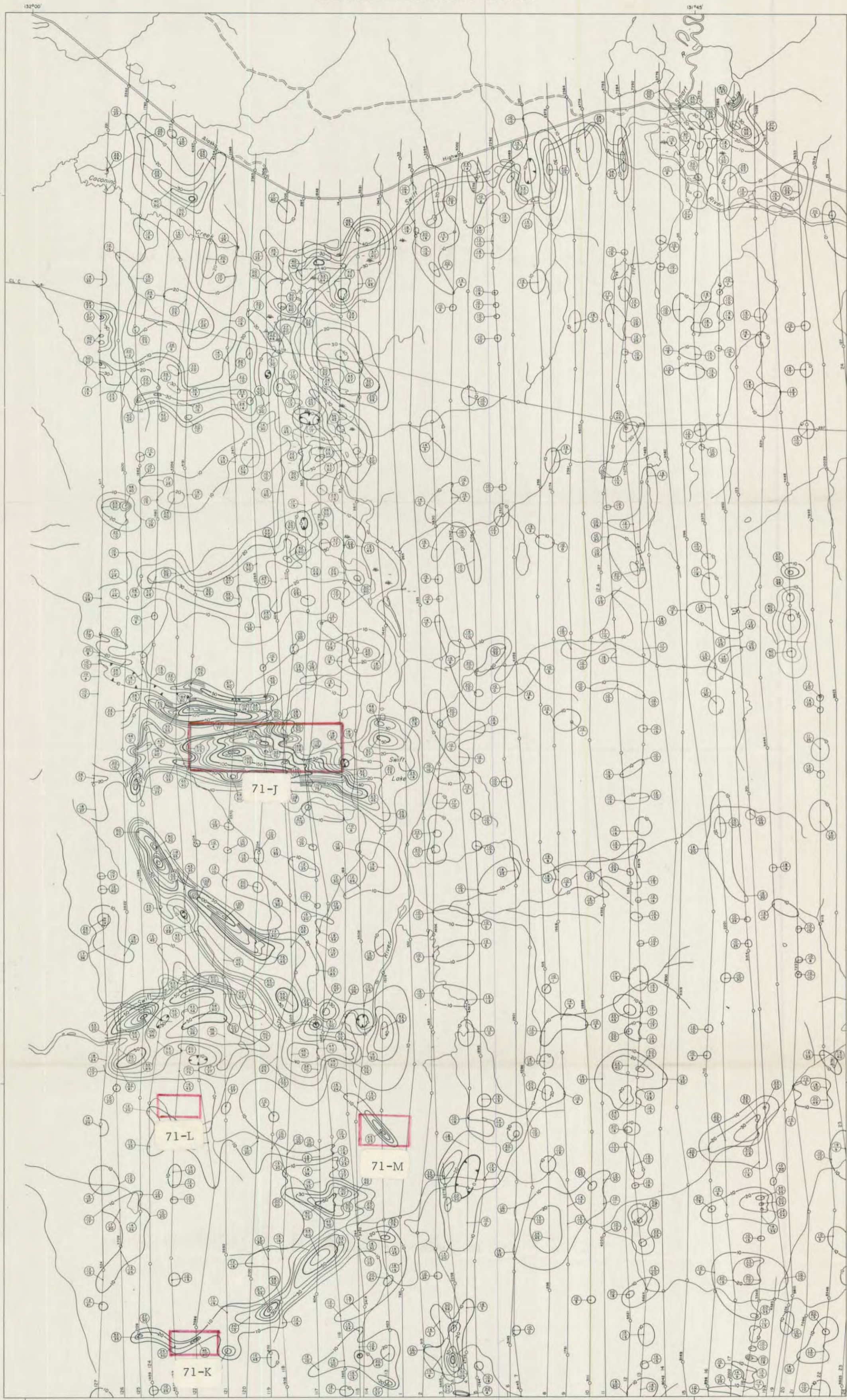
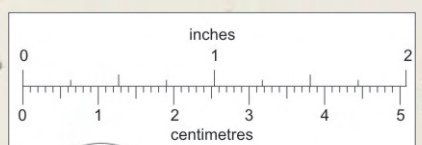


CYPRUS EXPLORATION CORPORATION LIMITED  
AIRBORNE GEOPHYSICAL SURVEY



MEAN FLIGHT LINE SPACING ..... 1320 FEET  
 MEAN TERRAIN CLEARANCE ..... 250 FEET  
 FIDUCIAL POINTS ..... 8490  
 FLIGHT LINES .....  
 ELECTROMAGNETIC CONTOURS 0, 50, 100, etc. ....  
 10, 20, 30, etc. ....

THE CONTOURS REPRESENT THE ELECTROMAGNETIC RESPONSE OF THE IN PHASE COMPONENT OF THE SECONDARY FIELD IN UNITS OF 10 PARTS PER MILLION.  
 (⊕) REPRESENTS IN PHASE COMPONENT OF SECONDARY FIELD  
 (⊖) REPRESENTS OUT OF PHASE COMPONENT



This reference scale bar has been added to the original image. It will scale at the same rate as the image, therefore it can be used as a reference for the original size.

ELECTROMAGNETIC MAP  
JENNINGS RIVER AREA  
BRITISH COLUMBIA

SCALE: 1 inch to 2640 Feet  
 2000 0 2000 4000 6000 8000 10000  
 FEET FEET

Flown and Compiled by  
 LOCKWOOD SURVEY CORPORATION LIMITED  
 TORONTO, CANADA  
 1970

EM. Anomaly



811299

1040