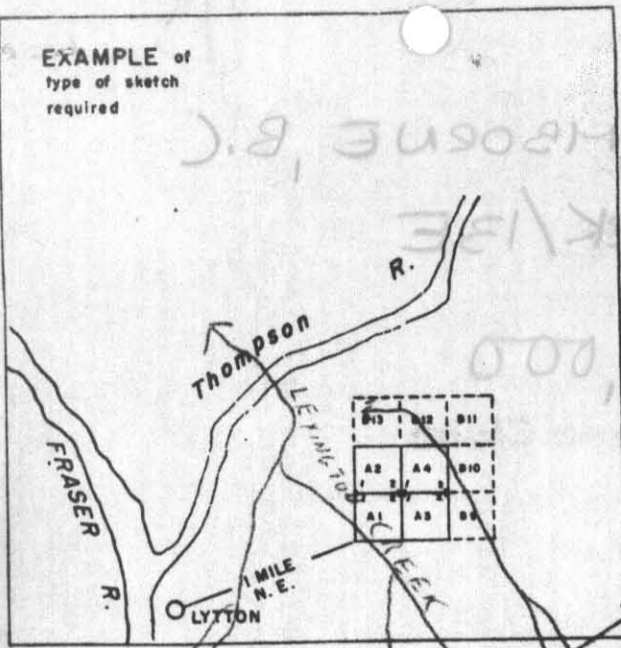
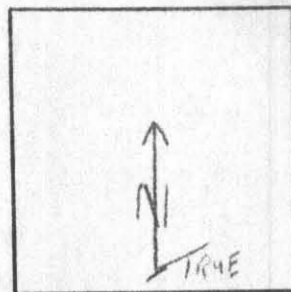


EXAMPLE of
type of sketch
required

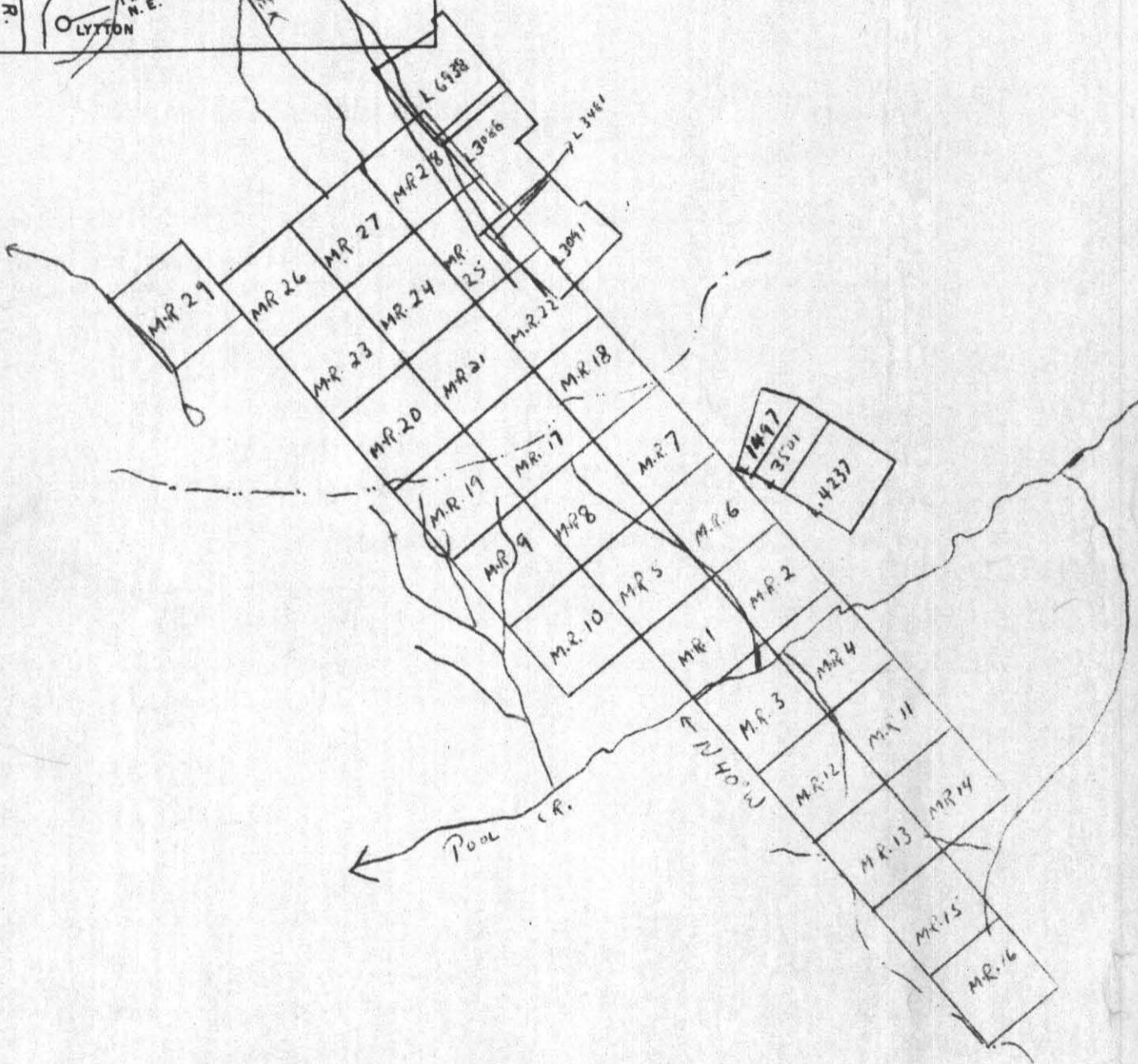


Claims must be tied by direction and distance to at least one, preferably more than one, topographical feature, or to a land lot, section, township, or other recognizable point on printed maps of the district. Relationship of previously located claims should also be shown.

N.B. — The sketch for a group of claims may be placed on one affidavit.

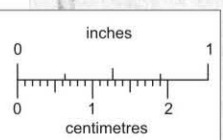


INDICATE NORTH
(True or Magnetic)



811199

1/2 MILE = 1"



This reference scale bar has been added to the original image. It will scale at the same rate as the image, therefore it can be used as a reference for the original size.