

INTER OFFICE MEMO

811190

CYPRUS EXPLORATION CORPORATION LTD.

VANCOUVER OFFICE

File
↓

Date: August 26, 1968

To: Mr. J. B. P. Sawyer

From: Mr. D. W. Tully

Subject: BEN ENGLISH LETTER - Re: My Note to you Aug 19-20

I talked to Mr. English today. He has two groups of claims, the Penn Group on Copper Creek, Williams Lake area and a second group near Moorehead (Muirhead?) Lake. Janus Explorations are involved in these claims.

1. The samples are not impressive, mostly quartz veins with disseminated chalcopyrite. Other samples show calcite and galena. Scheelite is mentioned.
2. A geochemical anomaly some 1,200 feet long and 800 feet wide show substantial total heavy metal content is in evidence.

English has a man in Williams Lake who can show you around. The mineralization does not look to be very important but should be checked out.

DWT

DWT/jel



12167 4th Ave.
Haney, B.C.
Aug 17th. 1968

Cyprus Exploration Corp. Ltd.
510 West Hastings Street,
Vancouver 2, B.C.

Dear Sirs:

I am in partnership with three well experienced prospectors who have, since early spring, been prospecting in the Wells-Barkerville area; an area which has been familiar to them for a number of years.

During this time we have acquired three groups of claims which we know have a better than average potential, and which are as follows.

1. PINE GROUP #1 to #10.

These are copper claims and are located near Jackpine Lake in the Quesnel river valley, approximately nine miles from the Cariboo-Bell property. This property was investigated by the Geological and Engineering staff of Mastodon Highland Bell Mines and on their recommendation a Geochemical survey was done on the property which outlined two anomalous areas. One anomaly is approximately 450 feet wide by 1300 feet long. The other anomaly is in the adjoining claim and could be an extension of the first, and is approximately 300 feet wide by 600 feet long. A road was bulldozed to the property and six trenches dug in preparation for diamond drilling, which was to be the next step in the program. At that time Cariboo-Bell ran into some difficulties and closed down their operations in this area. We picked up the Pine Group and we now hear that Cariboo-Bell is planning to recommence operations again this fall in developing their property in this area.

2. PEN GROUP #1 to #16.

This group of 16 claims is located on Copper Creek in the Wells-Barkerville area and the mineralization consists of tetrahedrite, galena, sphalerite, copper and scheelite. These claims had been held and prospected for a number of years and some hand trenching and stripping has been done on 5 or 6 veins measuring up to 10 feet in width and as shown on the enclosed map. At the time of staking this property, there was too much snow in the area to do extensive prospecting, but we obtained some excellent scheelite samples from some outcrops. There is quite extensive overburden on the property and a bulldozer is required for further stripping.

The enclosed is a copy of a report of sampling taken by the B.C. Dept. of Mines on the property some time ago. We have been unable to do further prospecting on this group at this time as we have committed our crew and finances to the following property.

3. HEATHER MINERAL CLAIMS #1 and #2.

These are base metal claims in the same area as the Pen Group and were located when some excellent showings of galena and chalcopryrite were obtained from an outcrop. We commenced a staggered 100 foot grid pattern Geochemical survey of the area for Total Heavy Metal content and established an anomaly approximately 500 feet wide by 1400 feet long and we staked the two claims to cover the anomaly at that time, but the surrounding area is open.

The claims are at an altitude of approximately 5500 feet in Alpine country, easily accessible by 4 wheel drive vehicles. There are no trees on the property and the overburden is from 1 to 5 feet in depth and can be totally stripped with a D4 Cat or similar equipment in a matter of a few days. We were very conservative in marking our Geochemical readings establishing this anomaly for our own information and we are quite confident that this will prove to be one of the best major finds recently in this province.

We are seeking a company to participate in the further development of these properties, and if your company is looking for additional properties, I am confident that if your representatives examine these claims, they will recommend participation.

If you wish to arrange for an inspection, I can be reached by telephone at 467 - 9134.

Trusting I will hear from you, I remain,

Yours very truly,

B. F. English
B.F. ENGLISH

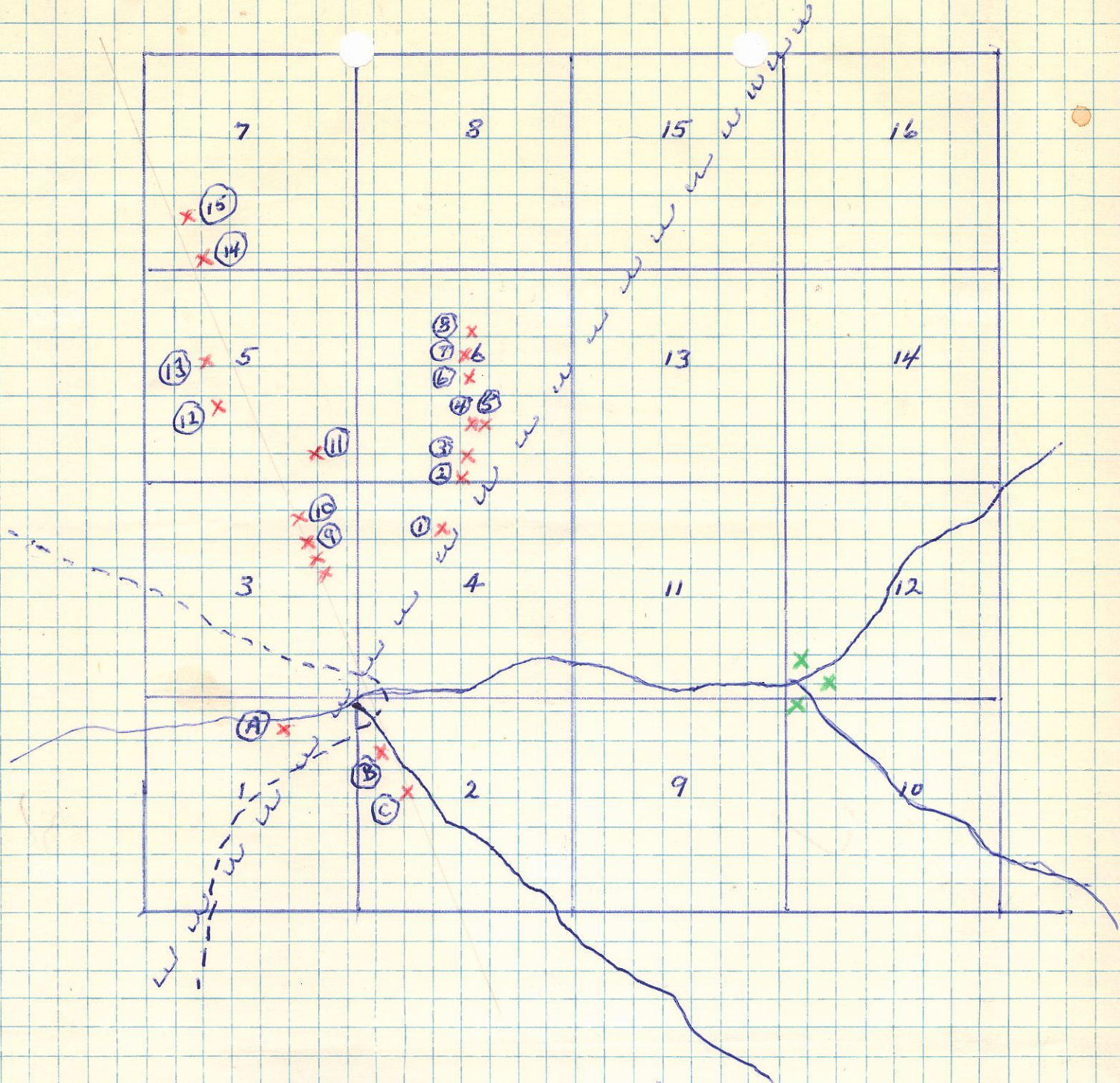
Mr. Speed ^{or}

Assays of Samples from the Pen Group

No.	Width of Vein	Width Sampled	Gold Oz.Ton	Silver Oz.Ton	Copper %	Tungstic Oxide %
1.	10'	selected from 6"	0.03	114.2	4.16	nil
2.	3'	10"	0.01	88.6	2.15	trace
3.	3'	3'	trace	14.5	0.42	0.04
4.	8'	2'	nil	trace	0.01	0.25
5.	18"	18"	trace	0.3	0.04	0.21
* 6.	7'	12"	trace	0.1	nil	0.06
7.	7'	2'	trace	12.8	0.37	0.08
8.	3'	12"	trace	0.4	nil	0.34
9.	8'	4'	0.01	9.3	0.51	0.05
*10.	8'	6-8"	nil	3.9	0.17	0.11
11.	2'	2'	trace	2.9	0.23	0.59
12.	7'	2'	0.02	7.7	0.68	0.19
13.	18"-2'	4-6"	nil	9.1	0.46	0.01
14.	6'	3"	0.025	27.8	1.83	0.05
15.	3½'	3½'	0.01	2.9	0.26	trace

* Silicified limestone

A	Across 14" mineralization	vertical	12.6%	Tungstic
	" 14"	" horizontal	18.2%	"
B	Across a width of 14 feet		3%	
C	Across a width of 4 feet		3%	

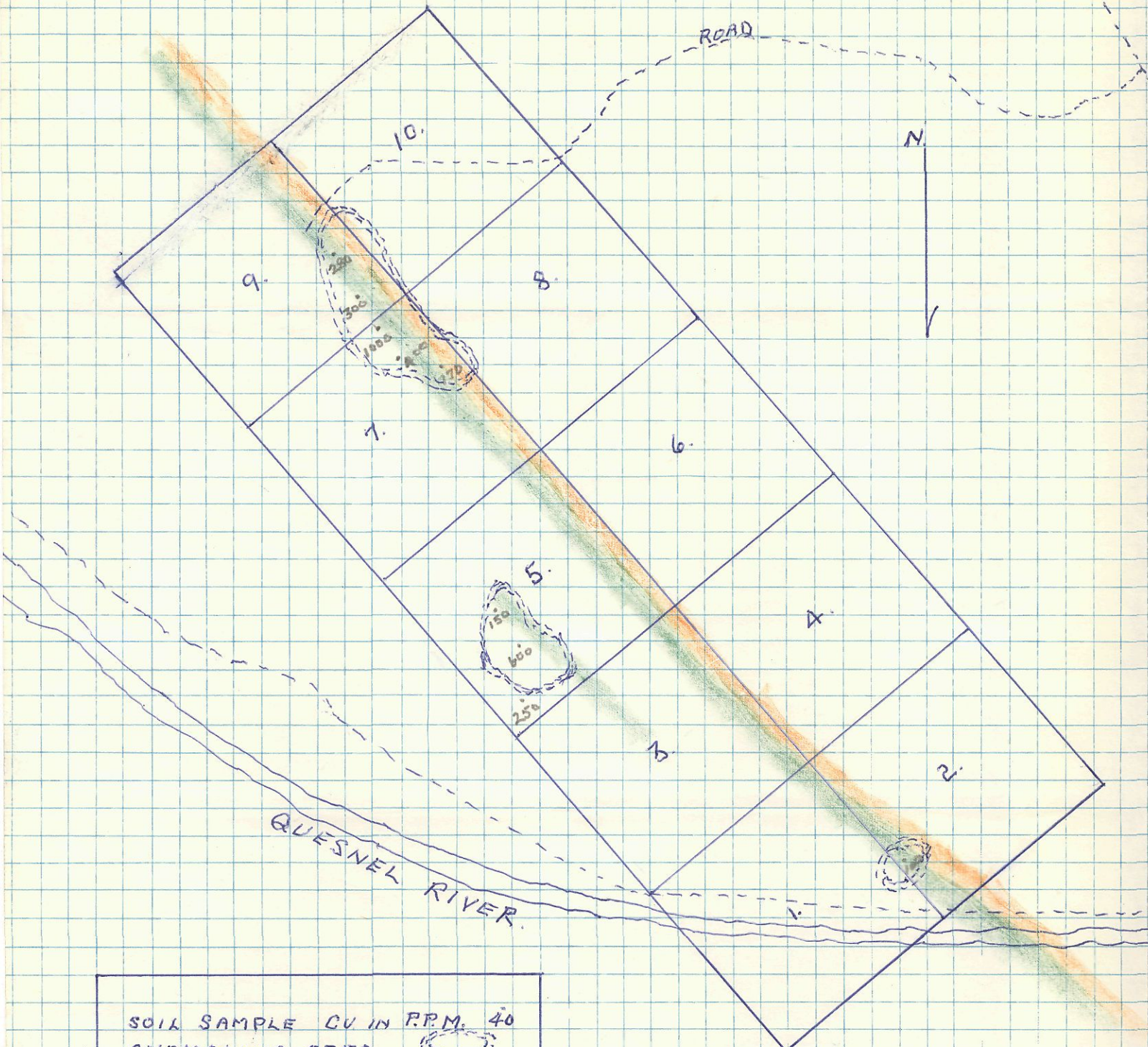




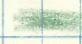
ROAD	----
FAULT	m m m
TETRAHEDRITE SAMPLES	(number) x
SCHEELITE SAMPLES	(letter) x
SCHEELITE PROSPECTS	xxx
APPROX SCALE 1/2" = 500'	
<u>PEN GROUP 1-16</u>	

JACKPINE LAKE

CARIBOON BELL 9 MI.

PINE GROUP 1 to 10.



SOIL SAMPLE CU IN P.P.M. 40
 ANOMALOUS AREA 
 PURPLE VOLCANICS 
 LIMESTONE 
 SCALE 1/2" = 500'