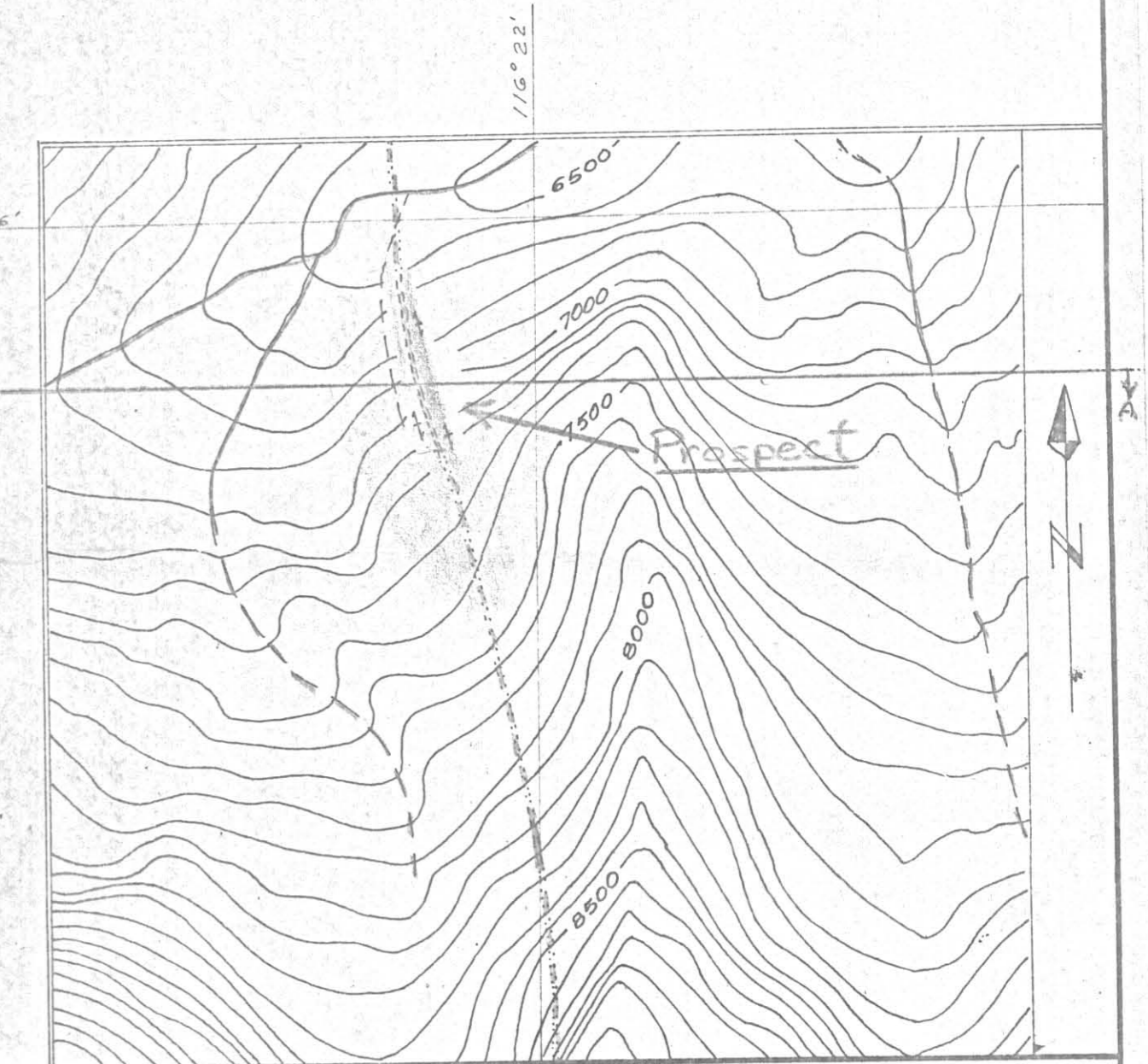
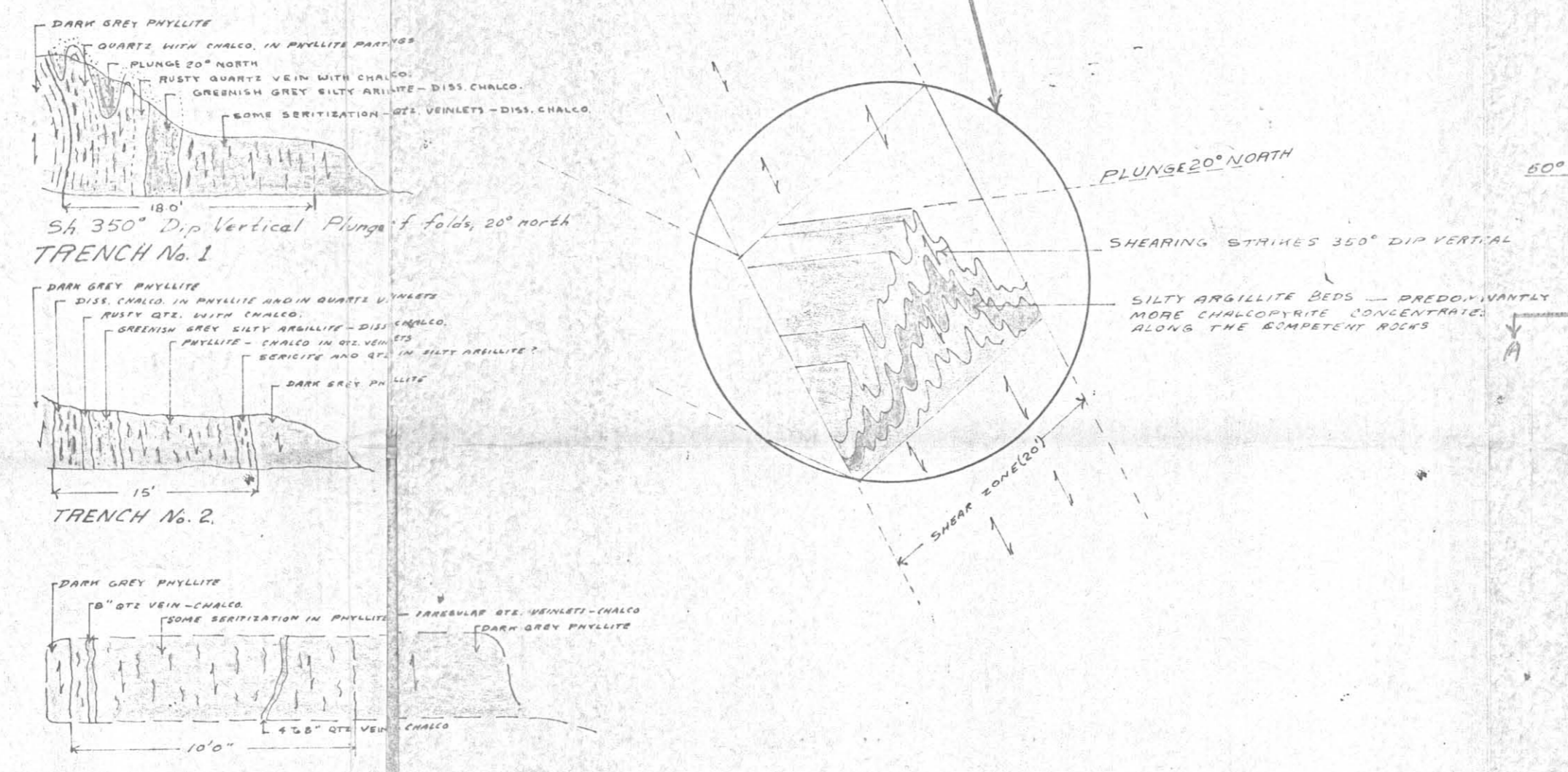
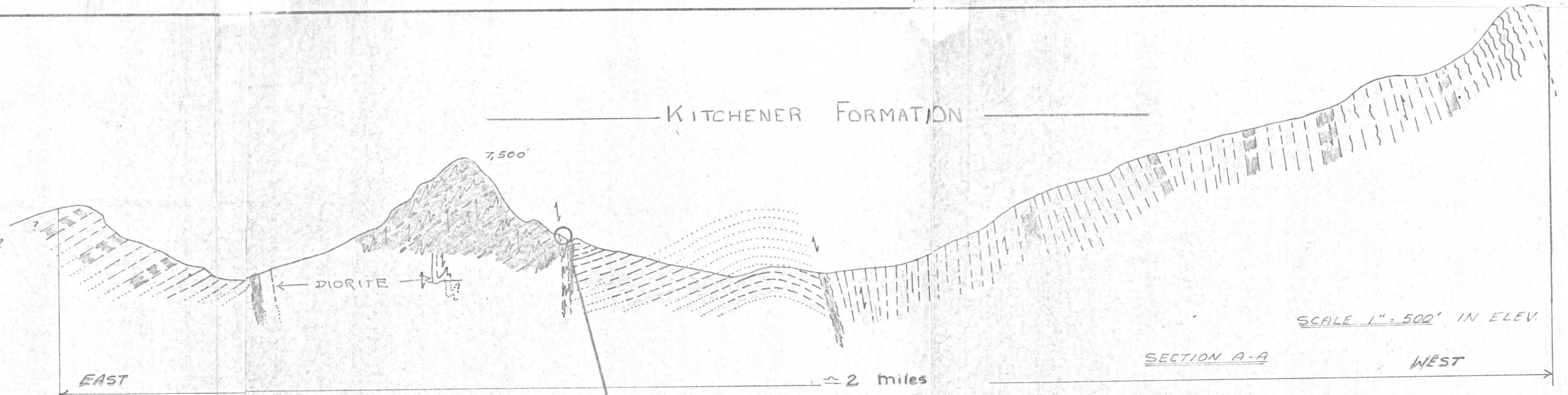
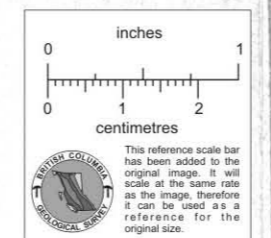


15' @ 0.06% Cu	S.No. 92351	O.C. No 1
7' @ 0.10% Cu	S.No. 92352	O.C. No 2
5.5' @ .31% Cu	S.No. 92353	O.C. 4
3.5' @ .03% Cu	92354	Av. 8' @ 0.24% Cu
5' @ 1.70% Cu	S.No. 92355	O.C. 5 TRENCH No 1
3.5' @ 1.35% Cu	56	Av. 15.5' @ 1.1% Cu
7' @ 0.20% Cu	57	O.C. 6 TRENCH No 2
4.5' @ 0.80% Cu	S.No. 92358	17.5' @ 0.45% Cu
3.5' @ 0.73% Cu	59	
9.5' @ 0.15% Cu	60	
10' @ 0.42% Cu	S.No. 92361	O.C. 7 TUNNEL
10' @ 1.00% Cu	62	20' @ 0.71% Cu
6' @ 0.14% Cu	63	O.C. 8 } 20' @ 0.24% Cu
4.5' @ 0.53% Cu	S.No. 92364	O.C. 9 }
27' @ 0.17% Cu	S.No. 92365	
10' @ 0.13% Cu	0.25	O.C. 10
10' @ 0.25% Cu	S.No. 92366	20' @ 0.19% Cu
7' @ 0.74% Cu	S.No. 92369	O.C. 11
12' @ 0.25% Cu	S.No. 92370	27' @ 0.33% Cu
8' @ 0.10% Cu	S.No. 92368	
10' @ 0.14% Cu	S.No. 92371	O.C. 12
7' @ 0.82% Cu	72	17' @ 0.42% Cu
7' @ 0.08% Cu	S.No. 92373	O.C. 13
10' @ 0.08% Cu	74	17' @ 0.08% Cu
9' @ 0.07% Cu	0.07	O.C. 14
6' @ 0.33% Cu	33	15' @ 0.17% Cu
6' @ 0.12% Cu	12	
	S.No. 92375	
	76	
	77	



ALL CHANNEL SAMPLES

SCALE IN LENGTH 1" = 100'



Drawn by: G.L.W.	Traced by:	DUTCHY GROUP of M.C.'s COPPER CREEK TRIBUTARY of DUTCH CREEK 811174 82K/8W	
Revised by:	Date:		
Scale: 1" = 1320'	Date: Sept 24/68	Plate:	

