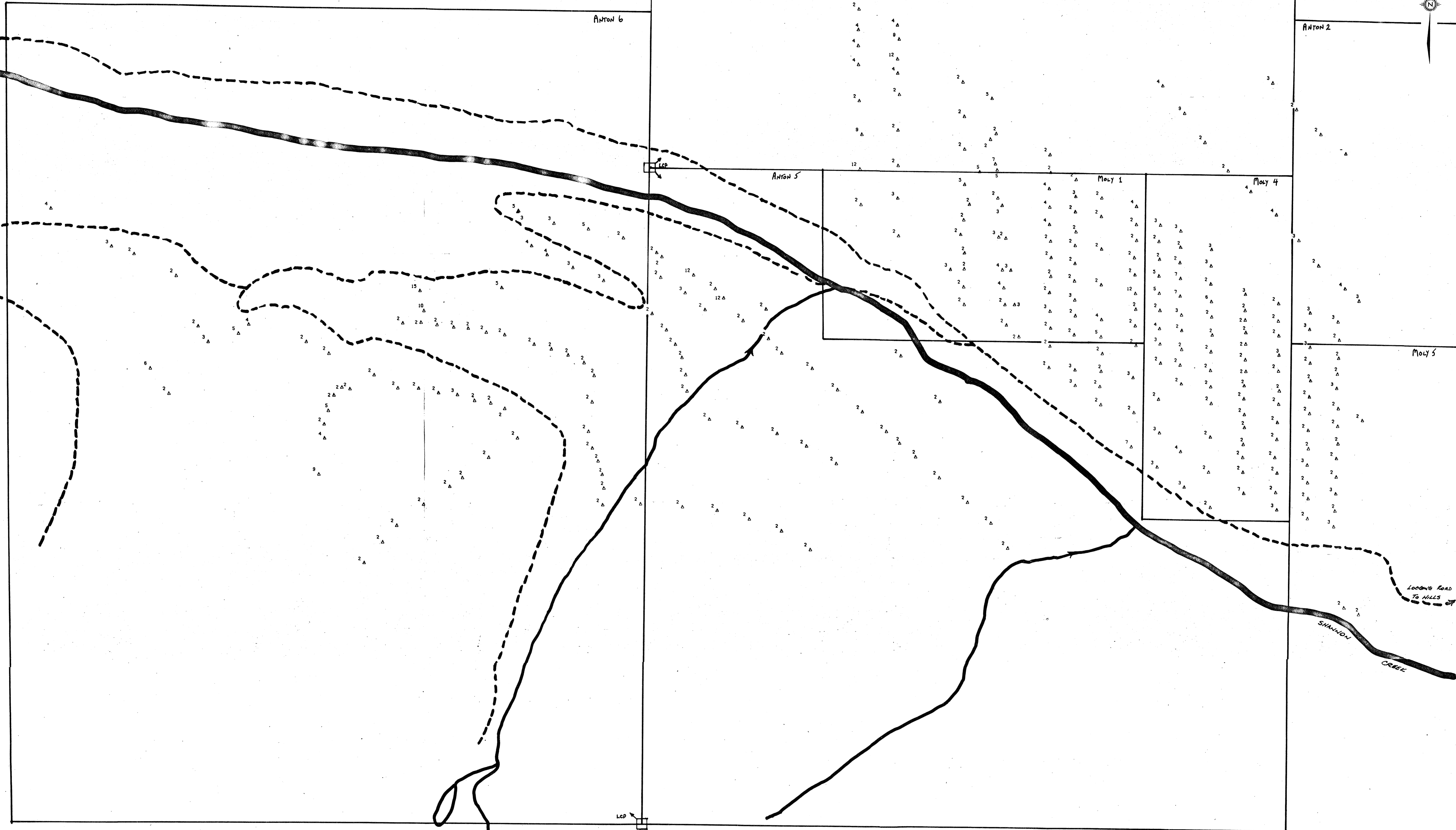
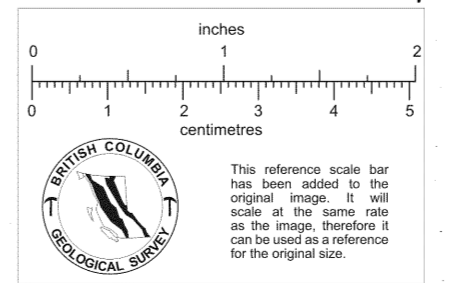


Sheet E + 48000 N

Sheet E + 48000 N



Sheet E + 48000 N



W. ARMSTRONG, P. ENG.

NOTE: CLAIM BOUNDARIES LOCATED FROM TOPOGRAPHY

Common 3, 4

Drawn by:	Traced by:
Revised by:	Revised by:

ANTON CLAIMS GEOCHEMICAL SURVEY
MOLYBDENUM IN SOILS, P.P.M.

Scale: 1/25 000 Date: JUNE, 1979 Plate: 1 W

311161