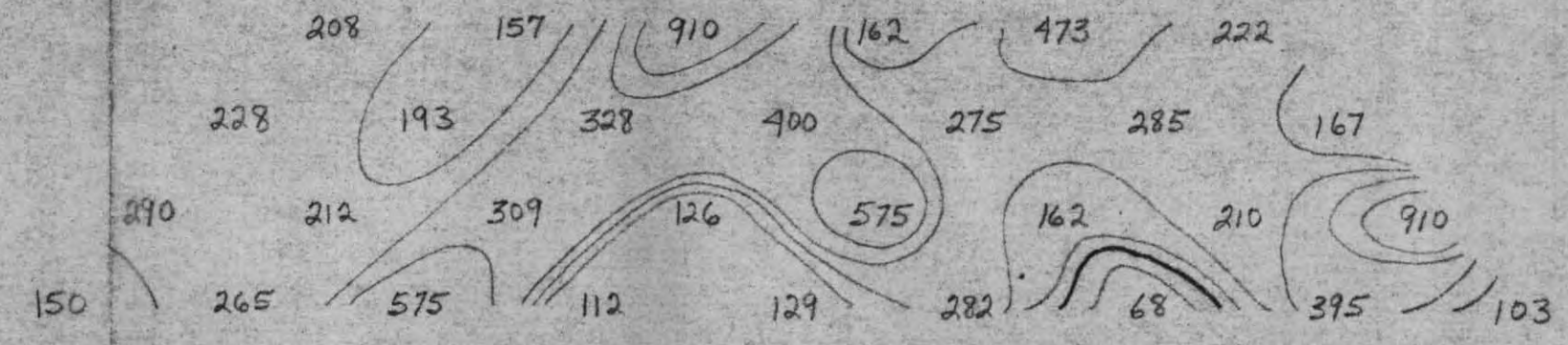
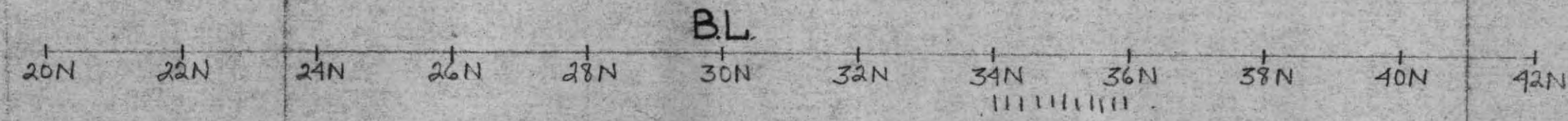


n-4
n-3
n-2
n-1

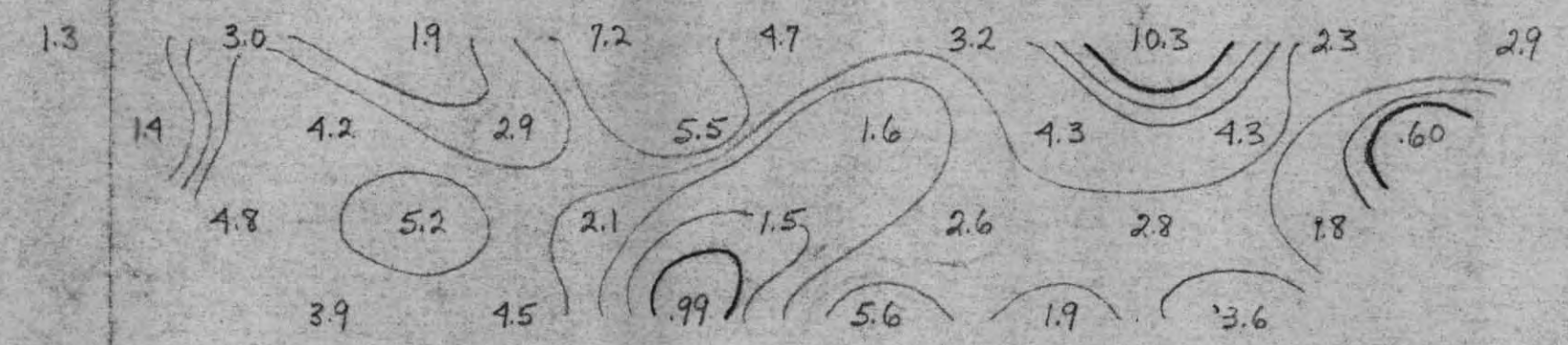


$\frac{P_a}{2\pi}$

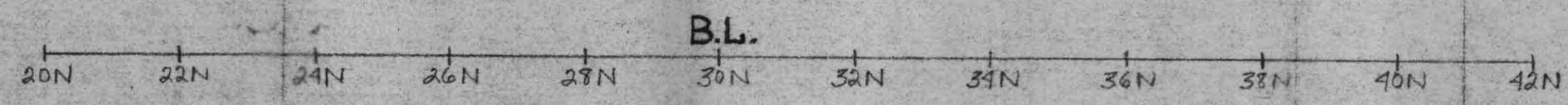
CYPRUS EXPLORATION CORP., LTD.
 HIGHLAND VALLEY AREA, B.C.
 STANDARD I.P. SURVEY
 SCALE - 1" = 200' D-D
 FREQ - 0.3 + 5.0 C.P.S.
 DATE - DEC 4, 1969
 OPERATOR - ALEX B. WALCER
 LINE - 67E
 AREA - B.



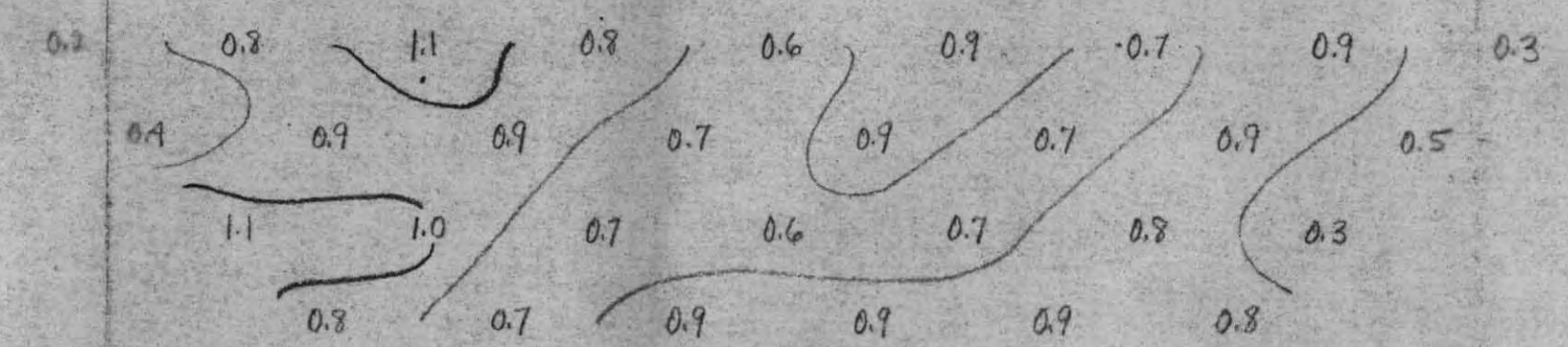
n-1
n-2
n-3
n-4



M.F.



n-1
n-2
n-3
n-4



F.E.

