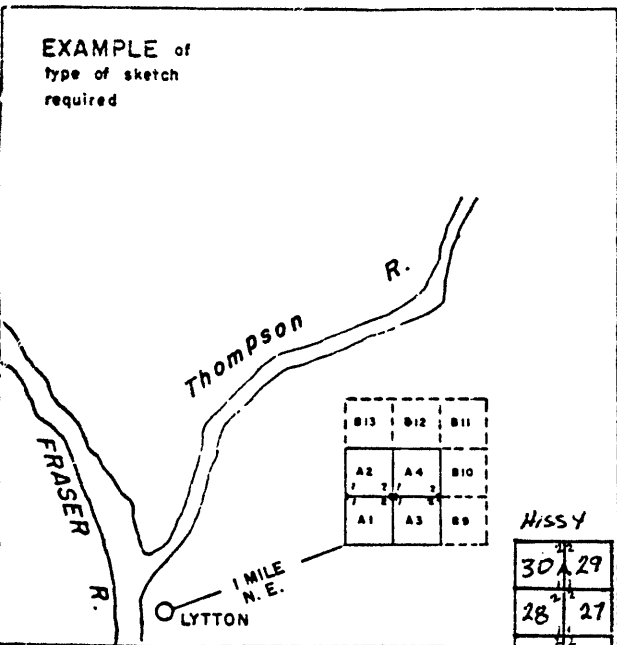
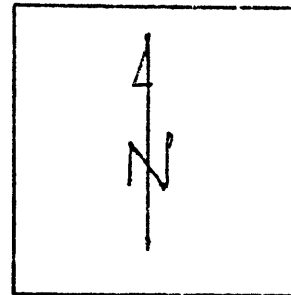


EXAMPLE of
type of sketch
required



Claims must be tied by direction and distance to at least one, preferably more than one, topographical feature, or to a land lot, section, township, or other recognizable point on printed maps of the district. Relationship of previously located claims should also be shown.

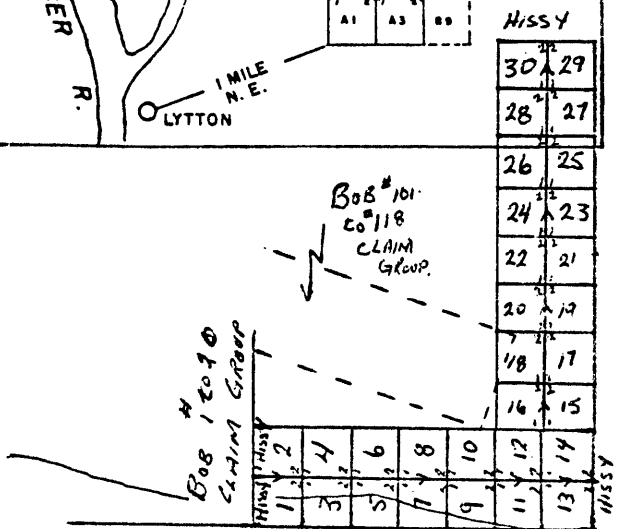
N.B. — The sketch for a group of claims may be placed on one affidavit.



INDICATE NORTH
(True or ~~Magnetic~~)

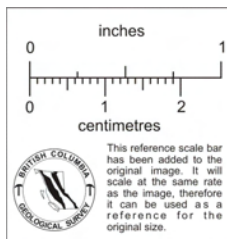
SCHEMATIC OF HISSY #1 to 30
CLAIM BLOCK

SCALE 1" = 6000'



→ TO ADAMS LK.

✓ APPROX. 40 MILES
TO BARRIERE BY ROAD.



811016