

Sections along lines A-B-C, D-E-F, and G-H  
VERTICAL SCALE, 1 INCH TO 2 MILES

LEGEND

- QUATERNARY  
PLEISTOCENE AND RECENT**
- 17 Glacial drift, alluvium
- TERTIARY AND QUATERNARY**
- 16 Olivine basalt and scoria; 16a, Tertiary; 16b, Pleistocene
- TERTIARY (?)**
- 15 15a, quartz monzonite; 15b, granophyre; 15c, gabbro and diorite
- CRETACEOUS OR TERTIARY  
SLOKO GROUP**
- 14 Andesite, basalt; albite trachyte, albite rhyolite, dacite, and related pyroclastic rocks; conglomerate, sandstone
- CRETACEOUS**
- 13 13a, alaskite; 13b, quartz monzonite
- JURASSIC (May be in part older and younger)**
- COAST INTRUSIONS**
- 12 Undifferentiated granitic rocks; 12a, Black Mountain body, 12b, Fourth of July Creek body; 12c, pink granite; 12d, Mount McMaster body; 12e, diorite; 12f, alkaline granite
- JURASSIC**
- 11 LABERGE GROUP  
Volcanic greywacke, siltstone, mudstone, shaly conglomerate; minor concretionary sandy limestone
- TRIASSIC (?)**
- 10 Greywacke, chert, argillite, conglomerate, tuff, slate, greenstone, impure limestone, jasper
- PENNSYLVANIAN AND PERMIAN  
ATLIN INTRUSIONS**
- 9 Peridotite, meta-diorite and meta-gabbro; 9a, serpentinite; 9b, carbonized serpentinite; 9c, talc-bearing (steatized) ultramafic rocks
- CACHE CREEK GROUP**
- 6 Chert, argillite, chert-pebble conglomerate and chert breccia; derived quartzite and schist; minor 7 and 8  
7 Greenstone and volcanic greywacke; derived amphibolite; minor 6 and 8  
8 Limestone and limestone breccia
- PENNSYLVANIAN AND/OR PERMIAN**
- 4 Andesite, basalt, and related pyroclastic rocks; conglomerate, sandstone, shale  
5 Limestone  
May be in part or wholly equivalent to 6, 7, 8
- MISSISSIPPIAN AND/OR EARLIER  
SYLVESTER GROUP**
- 3 3a, greenstone, chlorite schist, greywacke, quartzite, quartz-biotite schist; 3b, impure crystalline limestone
- PRE-PERMIAN**
- 2 Quartz monzonite
- YUKON GROUP**
- 1 Hornblende-quartz-feldspar schist and gneiss; quartzite, crystalline limestone. May be in part equivalent to 3
- A** Undifferentiated, mainly volcanic rocks of uncertain, possibly several, ages. Andesite, basalt, agglomerate, tuff, breccia; diorite and quartz diorite porphyries; rhyolite. In part probably Triassic, probably equivalent to 10

- Bedding** (horizontal, inclined, vertical, overturned) ..... + / x / x
- Bedding** (direction of dip known, upper side of bed unknown) ..... / / /
- Schistosity or slaty cleavage** (inclined, vertical) ..... / / /
- Fault** (defined, approximate, assumed) ..... - - - - -
- Anticline** (arrow indicates direction of plunge) ..... ~ ~ ~ ~ ~
- Syncline** (arrow indicates direction of plunge) ..... ~ ~ ~ ~ ~
- Fossil locality** ..... (O)
- Fossil locality** (referred to in Table III) ..... (O)
- Mineral occurrence** ..... x

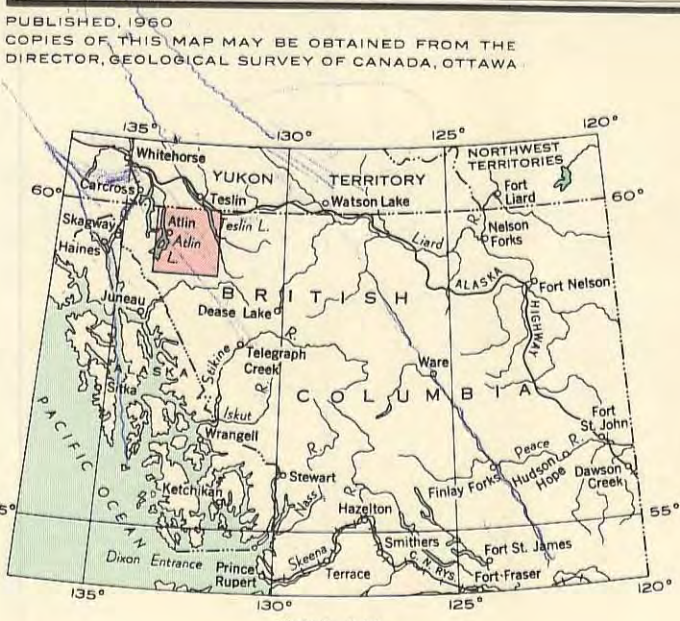
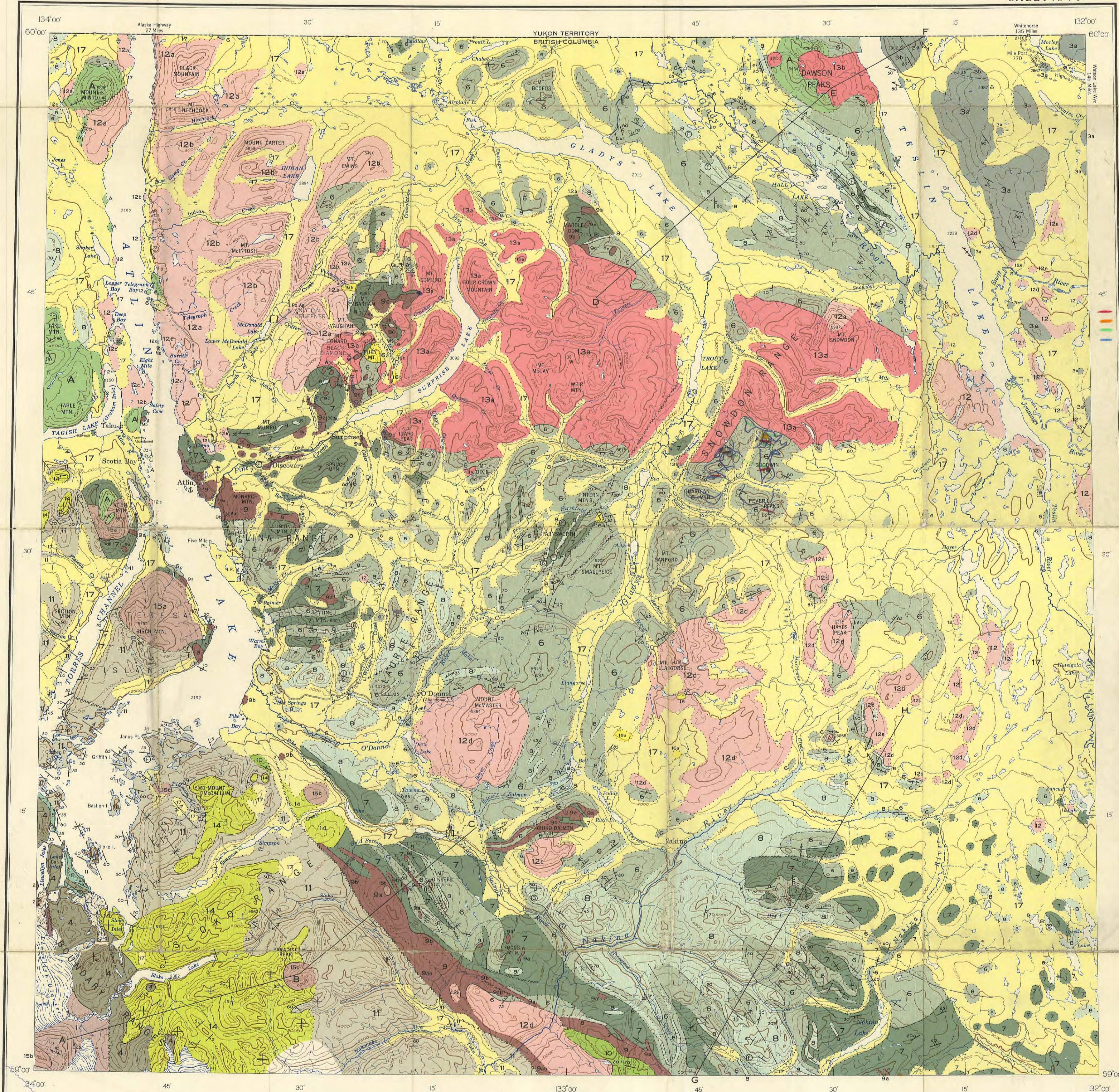
MINERAL SYMBOLS  
(Lode occurrences only)

- Copper ..... Cu Silver ..... Ag  
Gold ..... Au Tungsten ..... W  
Lead ..... Pb Uranium ..... U  
Molybdenum ..... Mo Zinc ..... Zn  
Nickel ..... Ni

Geology by J. D. Aitken, 1951, 1952, 1953, 1954, 1955  
To accompany G.S.C. Memoir 307, by J. D. Aitken  
Cartography by the Geological Survey of Canada, 1959

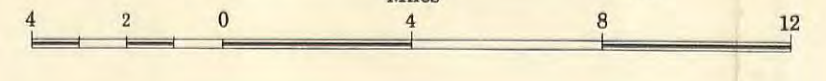
Air photographs covering this map-area may be obtained through the National Air Photographs Library, Topographical Survey, Ottawa, Ontario

Approximate magnetic declination 31° 31' East



MAP 1082A  
GEOLOGY  
ATLIN  
CASSIAR DISTRICT  
BRITISH COLUMBIA

Scale: One Inch to Four Miles = 1/253,440  
Miles



REFERENCE

- Road and buildings ..... - - - - -
- Road not well travelled ..... - - - - -
- Trail ..... - - - - -
- Telephone line ..... - - - - -
- Post Office ..... P
- Wireless station ..... W
- Wharf ..... W
- Seaplane anchorage ..... S
- Landing ground ..... L
- Horizontal control point ..... H
- Boundary monument ..... B
- Provincial boundary ..... P
- Indian Reserve boundary ..... I
- Intermittent stream ..... I
- Brailied stream ..... B
- Glacier ..... G
- Glacial wash ..... G
- Marsh or swamp ..... M
- Sand or mud ..... S
- Contours (interval 500 feet) ..... C
- Height in feet above mean sea-level ..... H

