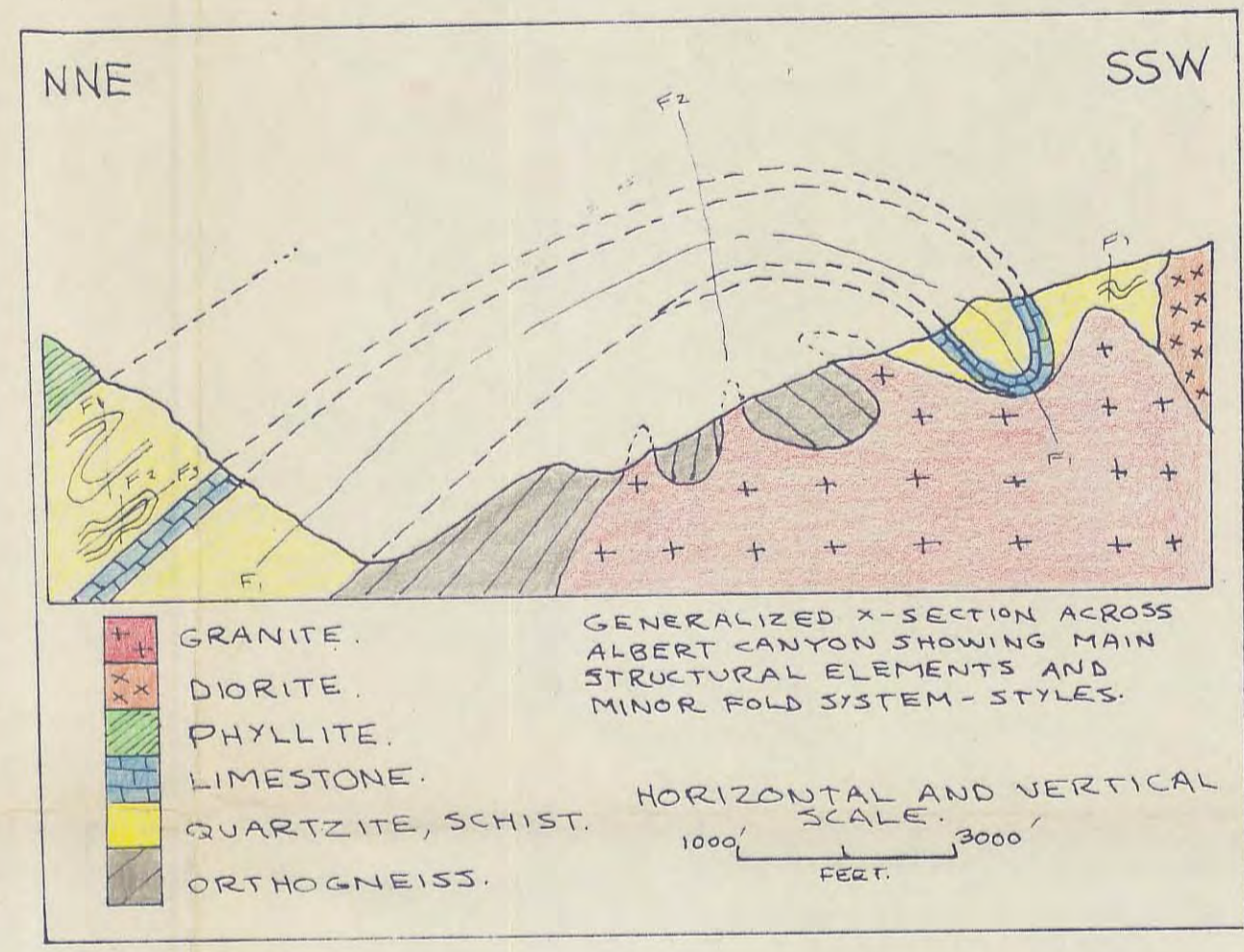
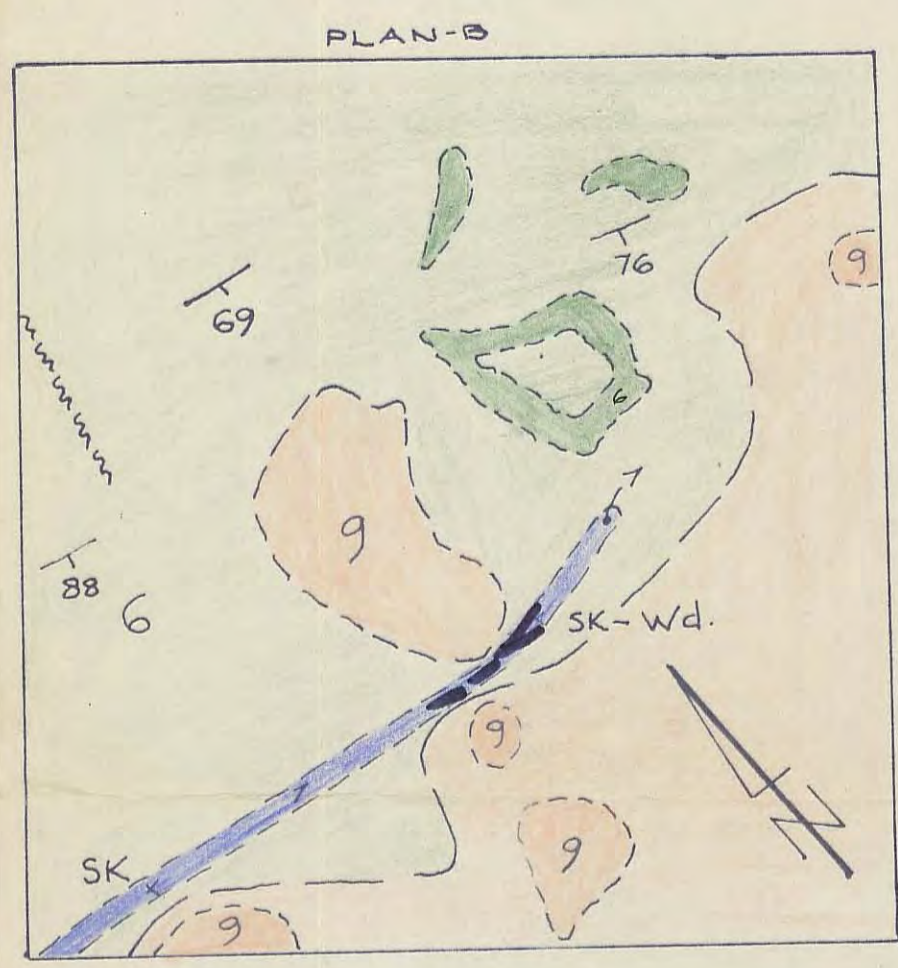


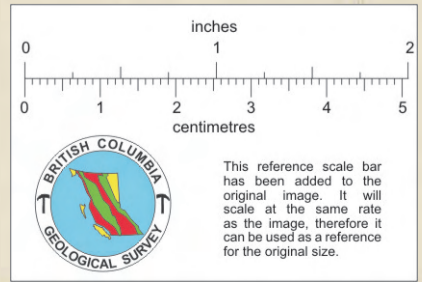


-SCALE-



- 10 BIOTITE GRANITE, MINOR APLITE AND BIOTITE - MUSCOVITE GRANITE.
- 9 BIOTITE - HORNEBLLENDE GRANITE, GRAN/DIORITE.
- 8 HORNEBLLENDE - BIOTITE DIORITE.
- 8a FOLIATED HORNEBLLENDE, BIOTITE, GRAN/DIORITE.
- 8b PORPHYRITIC HORNEBLLENDE DIORITE.
- 7 WHITE AND GREY BANNED IMPURE LIMESTONE.
- 6 QUARTZ - FELSPAR - BIOTITE GNEISS.
- 5 INTERBEDDED PHYLITE, CALCAREOUS PHYLITE AND BLACK CARBONACEOUS LIMESTONE.
- 4 QUARTZITE, QUARTZ - MICA SCHIST, MINOR FELSPAR QUARTZ - BIOTITE GNEISS, PELITIC AND CALCAREOUS SCHIST.
- 3 WHITE, MASSIVE OR POORLY FOLIATED DOLOMITIC LIMESTONE.
- 2 AMPHIBOLITE.
- 1 HORNEBLLENDE - BIOTITE - PLIOGLCLASE GNEISS.

- Wv - SCHEELITE IN VEIN, SHEAR OR ON FRACTURE PLANE.
- Wd - DISSEMINATED SCHEELITE.
- Py - PYRITE.
- Po - PYRRHOTITE.
- SK - SKARN.
- X - SHOWING.
- Mo - MOLYBDENITE.
- CL - CHALCOPYRITE.
- G - GOSSAN.



KODIAK RESOURCES LTD.-ALBERT CANYON B.C.