

92I
Property Submitted
13-

6. MEADOW CREEK SHOWING (Guichon batholith
margin area)

810706

Summary:

The showing consists of a series of quartz-carb veins, mineralized with chalcocite which occur across a zone approximately 70' wide and exposed over 100' along strike. Volcanic rock chips show high copper background.

Conclusions

The showing though not significant in itself may be indicative of better prospects elsewhere in the volcanics.

Recommendations

Showing is currently held by someone else. Keep results on file and retain rock samples for further work.

Introduction

The showing was examined at the request of I. Greg who had been interested in acquiring the property. About 1 hour was spent on the location.

Location

Approximately 8 miles west of Lac Le Jeune on the north side of the road which parallels Meadow Creek. There is a small outcrop about 50' high on the right hand side of the road and farmstead on the left.

Access

Access is via the Lac Le Jeune road, a distance of about 27 miles from Kamloops. See attached map. The showing

is only about 50 ft. from the roadside.

Property and Ownership

Not known.

Topography

Rolling hills with scattered cover of scrub pine.

History of the Occurrence

An adit was put into the base of the hill near the turn of the century. A trench about 4' deep and 40' long was excavated in the outcrop higher up.

General Geology

The mineralization is confined to the Nicola Volcanics, a strongly porphyritic, maroon to green intermediate volcanic unit with occasional lenses of tuff and coarse agglomerate.

Mineralization

Restricted to quartz-carbonate veins in the Nicola volcanics. Largest vein approximately 6" across with lumps of chalcocite up to 3" across. Occur occasionally across a width of approx. 70' and over about 100' length of outcrop. Approx. 1 vein for every 6' of outcrop surface.

Comments

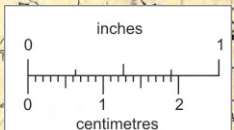
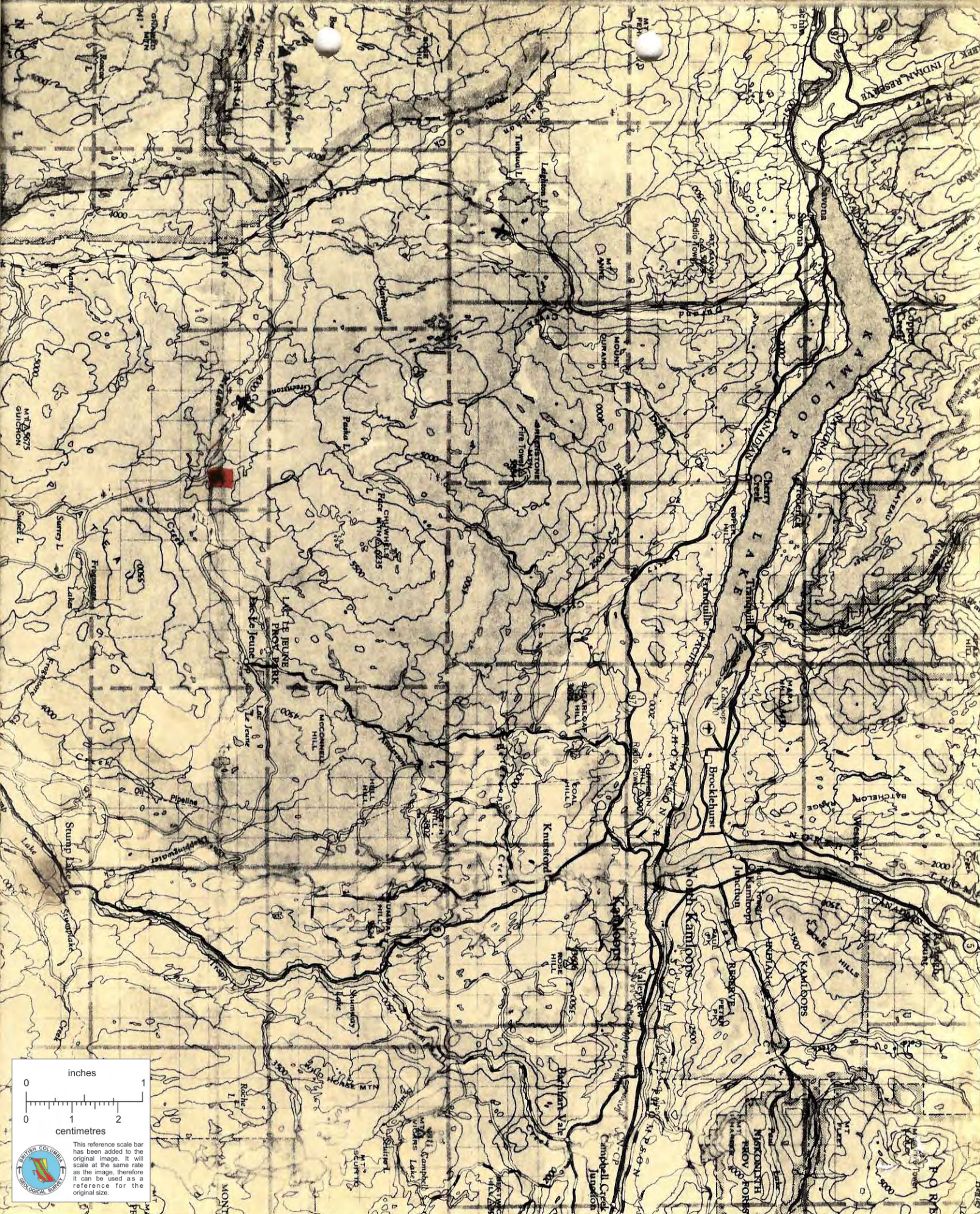
Ground is currently held by others but is interesting as the volcanics contain high copper background values (see Warren and Delineault). Samples of the mineralization and volcanic rocks associated have been sent to the Vancouver

office.

Two soil samples were taken from the overburden covered area several hundred feet north of the showing.

A rock chip was taken from the volcanics near the veins but did not itself contain any vein material. The values are given below.

		Cu	Pb	Zn	Mo
Soil	AD - 1	74	17	62	0
Soil	AD - 2	60	15	57	0
Rock	AD - 3	148	19	70	0



This reference scale bar has been added to the original image. It will scale at the same rate as the image, therefore it can be used as a reference for the original size.

