

INTER OFFICE MEMO

810623

CYPRUS EXPLORATION CORPORATION LTD.
VANCOUVER OFFICE

TO	REPLY	
	COMMENT	
RETURN TO		
OCT 5 1970		
1	4	5
2	5	6
3		7
4		8

Date: September 30, 1970

To: C. A. Mark
From: J. B. P. Sawyer
Subject: BIG ONION

Ref: 633 CVL

Enclosed please find one set of McPhar IP profiles for Big Onion. Lines read were 20N, 28N, 36N, 40N, 48N, 56N, 64N, 72N, and 88N. As you will note, there appears to be a fairly definite resistivity "low" which corresponds roughly with the Astlais Creek fault area, and in part at least it can be correlated with the zones of better grade mineralization in holes C1, C5, etc. This zone appears to continue north-easterly and shows up in the area of the base line on lines 64N, 72N.

Some of the drill holes listed in my memo to you of last week were designed to test this resistivity "low". Drill hole C11, which was drilled south-easterly from an approximate location 39+50N, 12E, went right through the quartz diorite intrusive in fairly short order. There was a small section at the top of the hole which ran 0.67% copper. The results of C11 suggest that the south-westerly section of intrusive, in which we have done all of the drilling to date, may in fact be a faulted off part of the main intrusive mass, or a very shallow keel with limited depth extensions and thus tonnage potential. As a result of this, I decided to change our plans for the next few holes and on the assumption that much of the area mapped by Texas Gulf as quartz porphyry (rhyolite) could be underlain by a larger mass of the quartz diorite intrusive decided to drill a section from north-west to south-east through this area. Drill hole C12 is the south-easterly one of two holes planned to accomplish this and is being drilled from a location at approximately 66+50N, 2+50E on a bearing S.61°E at minus 45°. Late on September 29, C12 was drilling below 726 ft. having been in mineralized quartz diorite from bedrock surface at 80 ft. Carew McFall reports an encouraging amount of disseminated chalcopryrite over the last 200 ft. or more. The rock here appears to be more altered than further up the hole. It will be interesting to see some assays from this material.*

Assay received 10/6/70 from Carew McFall:

85' to 110' .51% Cu	4+0 to 840 .39% Cu	110' to 290' .16% ✓	840 to 640 .24% ✓	290' to 640 .20% ✓	Avg. 85' to 910' .252 ✓
---------------------	--------------------	---------------------	-------------------	--------------------	-------------------------

on 100% of the mineralized to 956'

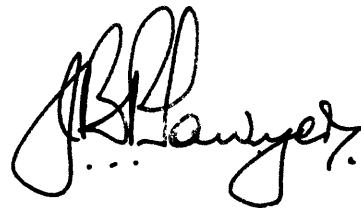
Mr. C. A. Mark

- 2 -

September 30, 1970

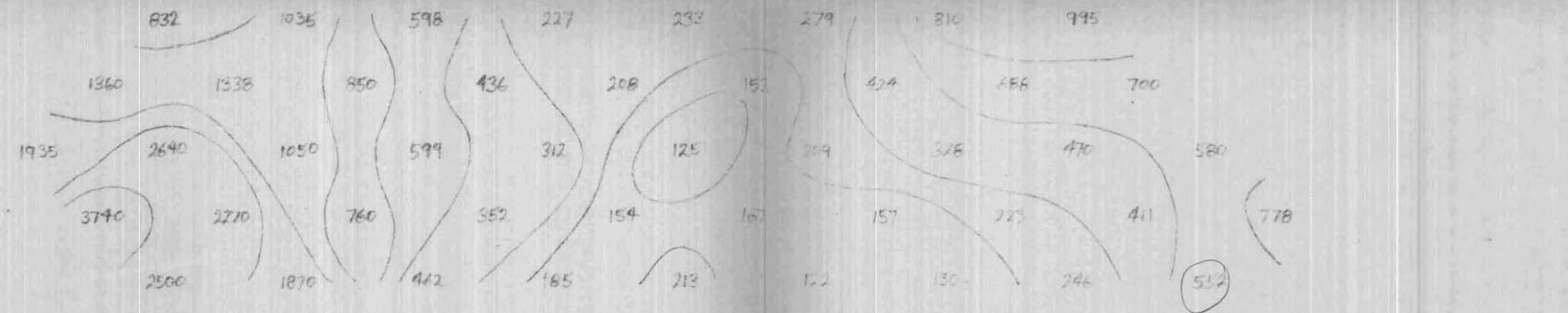
Hole C13 is planned to drill from approximately 5+50W of the base line near 64N and will complete this planned section. It should intersect the area characterized by the resistivity "low" mentioned earlier.

If the grade of this mineralization is sufficiently interesting, this more north-easterly section of the intrusive could be what we are looking for on this property. I would appreciate receiving your comments on this IP work.

A handwritten signature in black ink, appearing to read "J. B. Sawyer". The signature is stylized with large, overlapping loops and a long, sweeping tail that extends to the right.

JBPS/aw

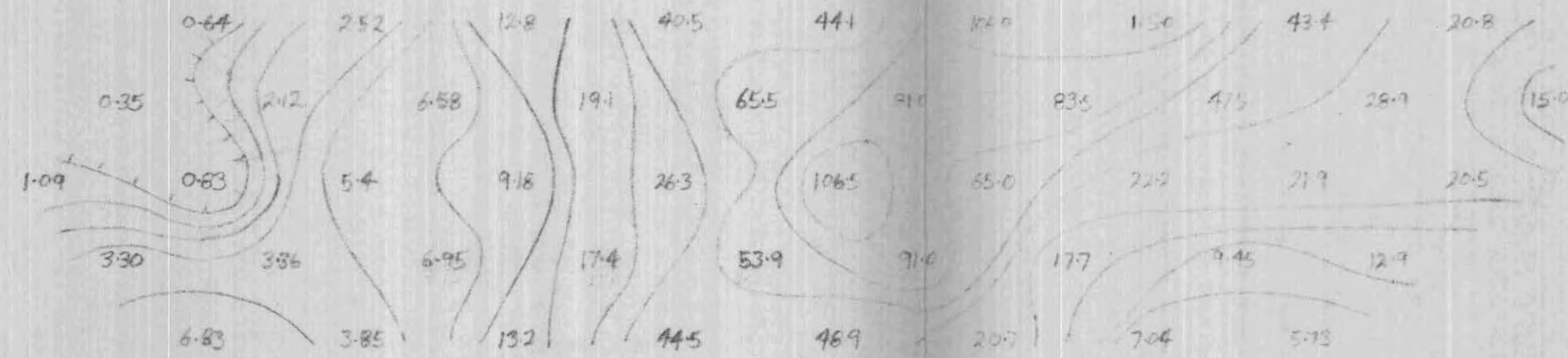
ENC:



P
2π

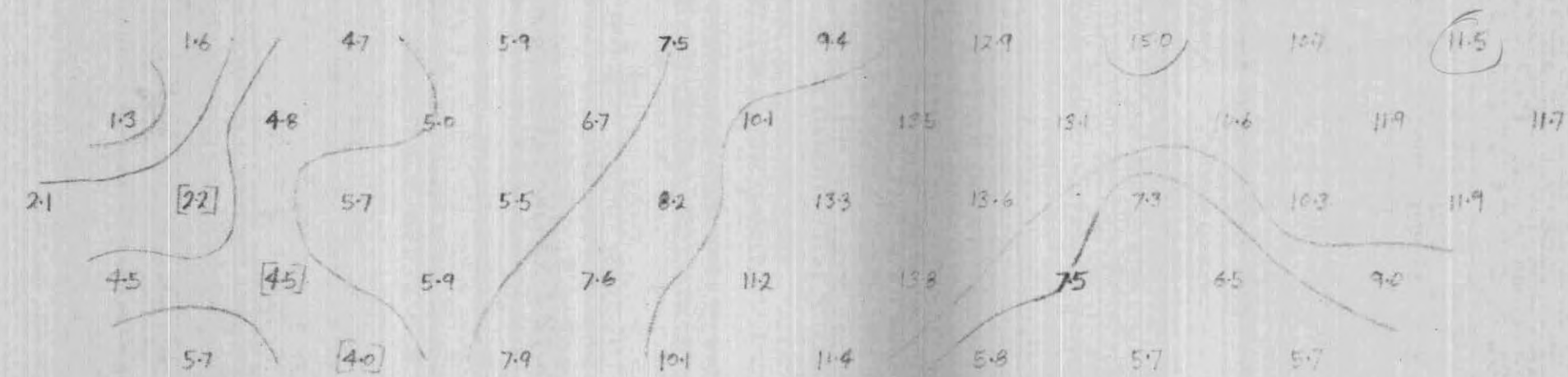
CYPRUS EXPLORATION CORPORATION LTD.
 BIG ONION
 SMITHERS B.C.
 STD. I.P. - DIPOLE-DIPOLE
 FREQUENCIES: 5.0 @ 0.3 cps
 SCALE: 1 INCH = 500 FEET
 LINE: 20 N
 AUGUST / 1970

40w 35w 30w 25w 20w 15w 10w 05w 00 05E 10E 15E 20E 25E 30E



ME

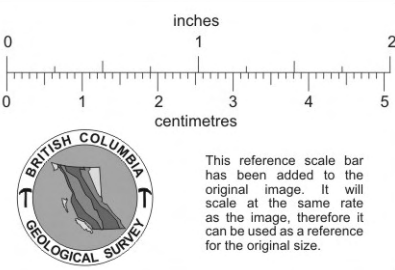
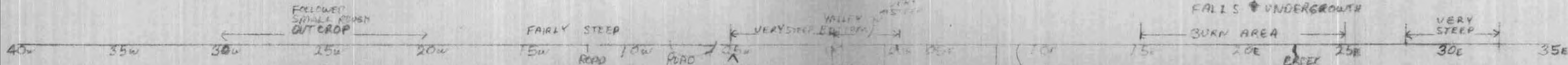
RONALD B. MERTENS

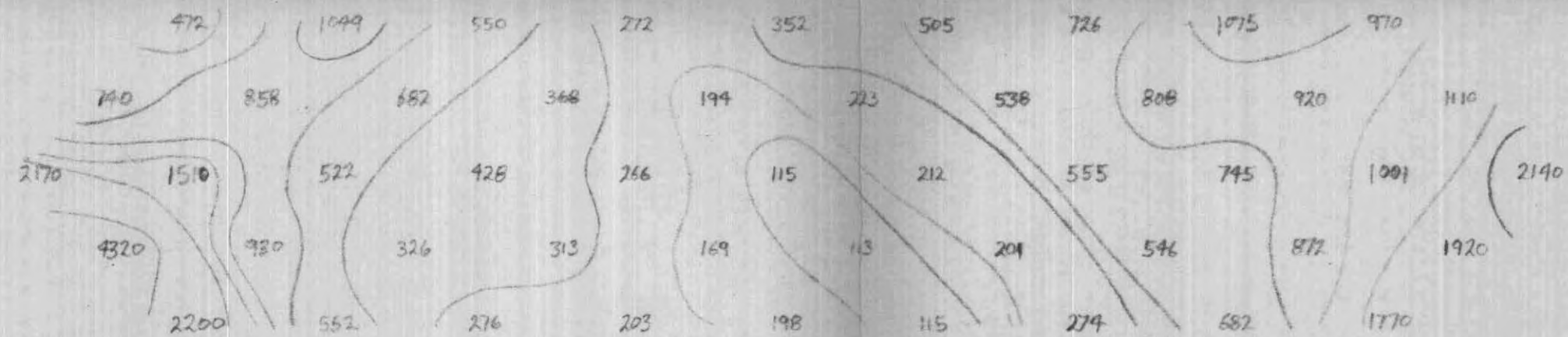


FE

11.5
552

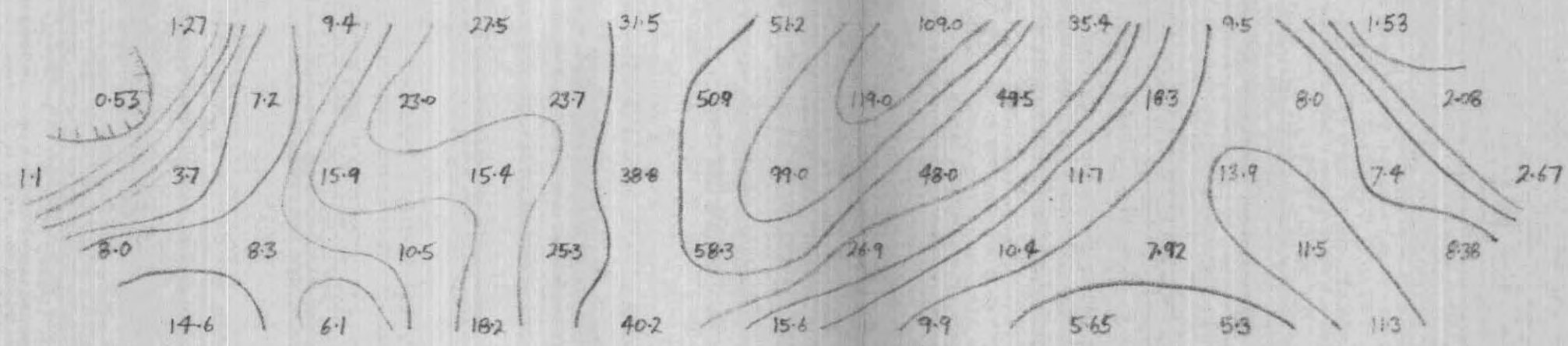
5.0 / 1000



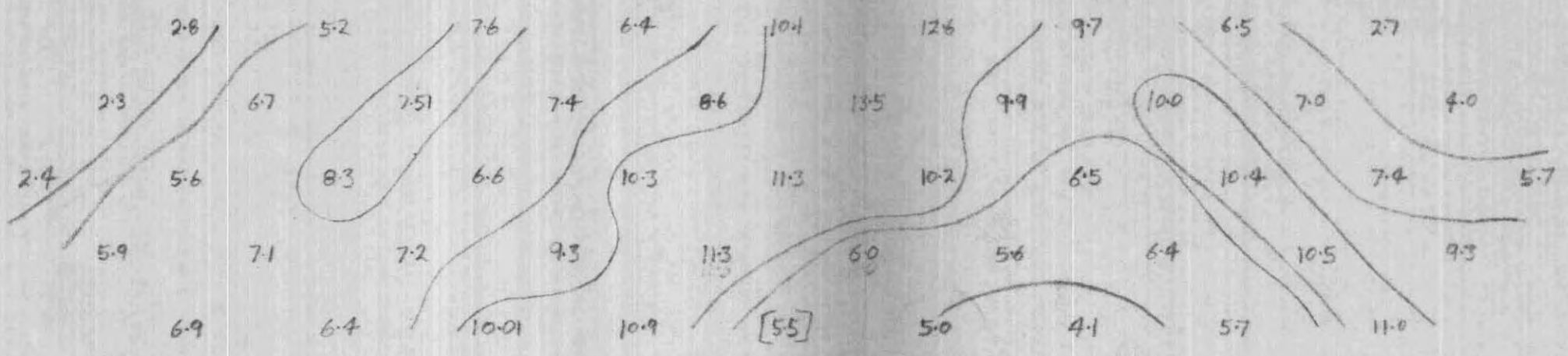


P
2IT

40w 35w 30w 25w 20w 15w 10w 05w 00 05e 10e 15e 20e 25e 30e

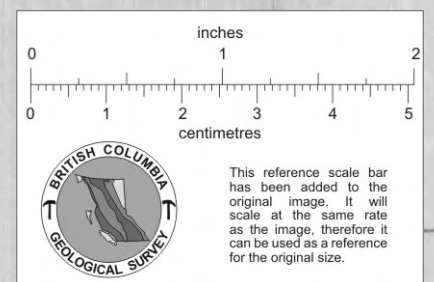


ME



FE

CYRUS EXPLORATION CORPORATION LTD.
 BIG ONION
 SMITHERS, B.C.
 STD. I.P. DIPOLE-DIPOLE
 FREQUENCIES: 5.0 & 0.3 cps
 SCALE: 1 INCH = 500 FEET
 LINE: 28 N
 AUGUST/1970
 RONALD B. MERTENS

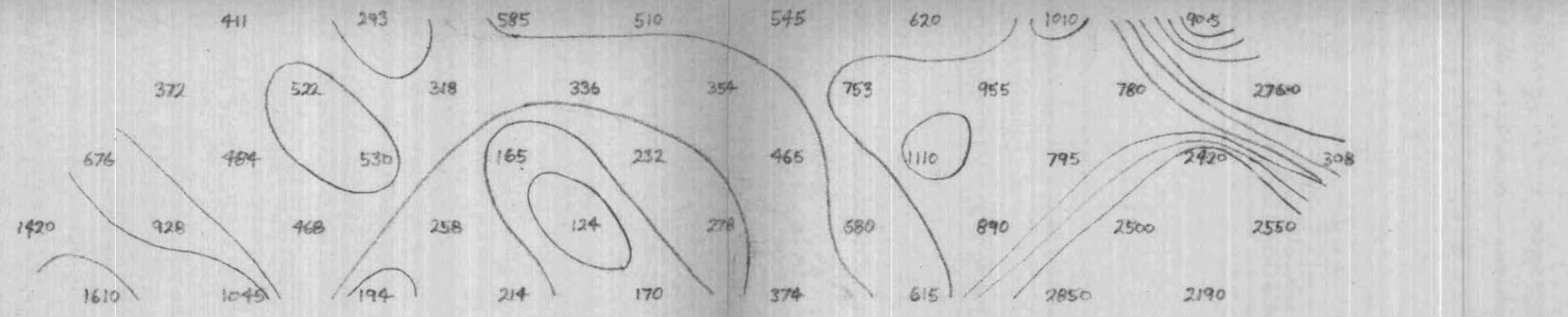


35w 30w 25w 20w 15w 10w 05w 00 05e 10e 15e 20e 25e 30e

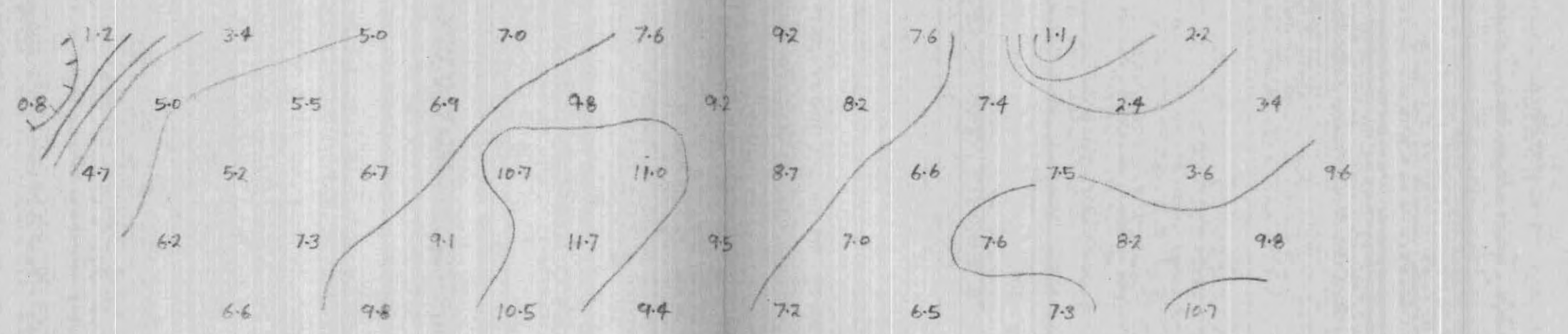
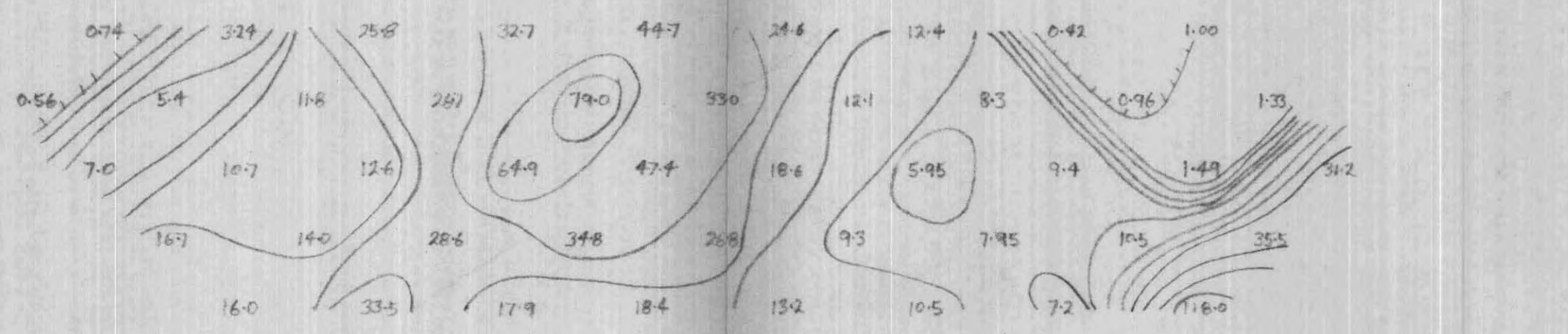
FAIRLY STEEP
 STEEP
 FAIRLY STEEP

CLIFF

VALLEY
 VERY
 STEEP
 SIDES
 100
 FEET
 SIDES

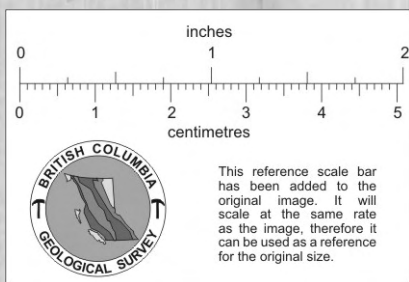


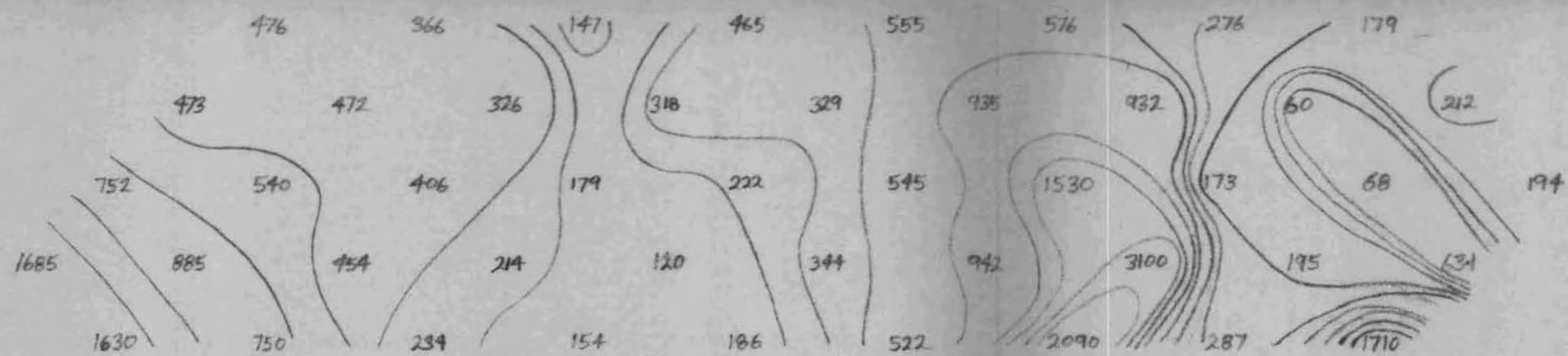
40w 35w 30w 25w 20w 15w 10w 05w 00w 05e 10e 15e 20e 25e 30e



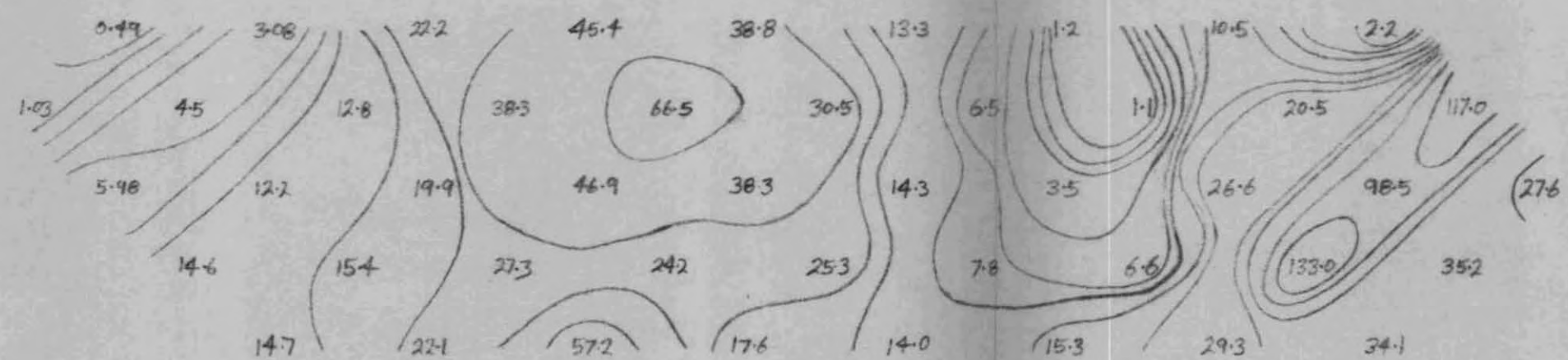
CYPRUS EXPLORATION CORPORATION LTD
 BIG ONION
 SMITHERS, B.C.
 STD. I.P. DIPOLE-DIPOLE
 FREQUENCIES. 5.0 & 0.3 cps
 SCALE: 1 INCH = 500 FEET
 LINE 36 N
 AUGUST/1970

RONALD B. MERTENS

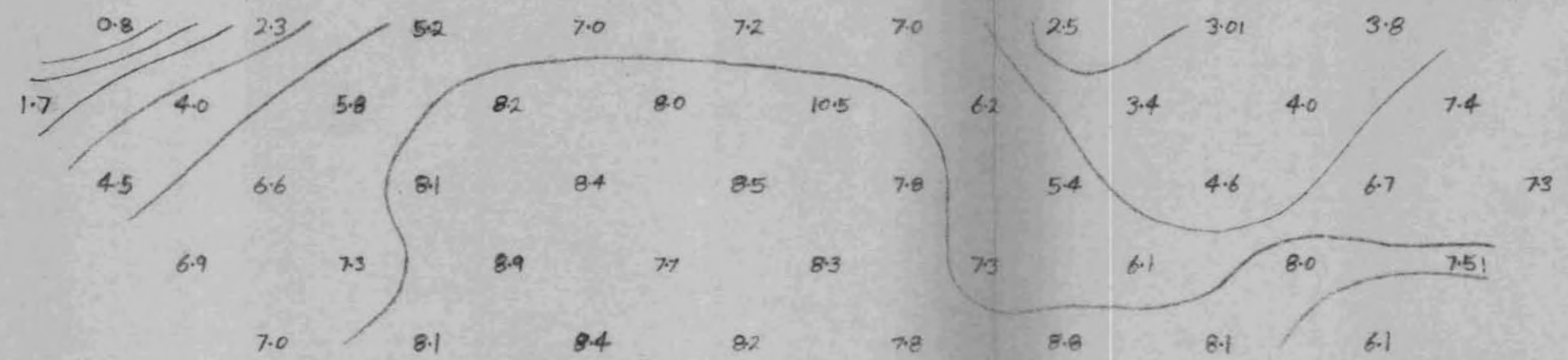




35w 30w 25w 20w 15w 10w 05w 00 05E 10E 15E 20E 25E 30E 35E



35w 30w 25w 20w 15w 10w 05w 00 05E 10E 15E 20E 25E 30E 35E



VERY STEEP DOWN ← VERY STEEP WITH BUCK BUSH AND TALKS UP → VERY STEEP UP → UP AND ACROSS SIDE HILL →

35w 30w 25w 20w 15w 10w 05w 00 05E 10E 15E 20E 25E 30E 35E

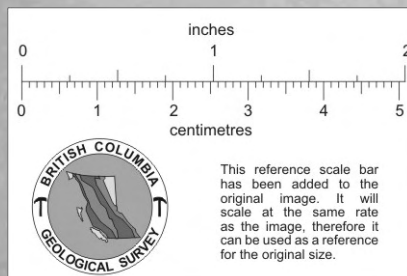
P/217

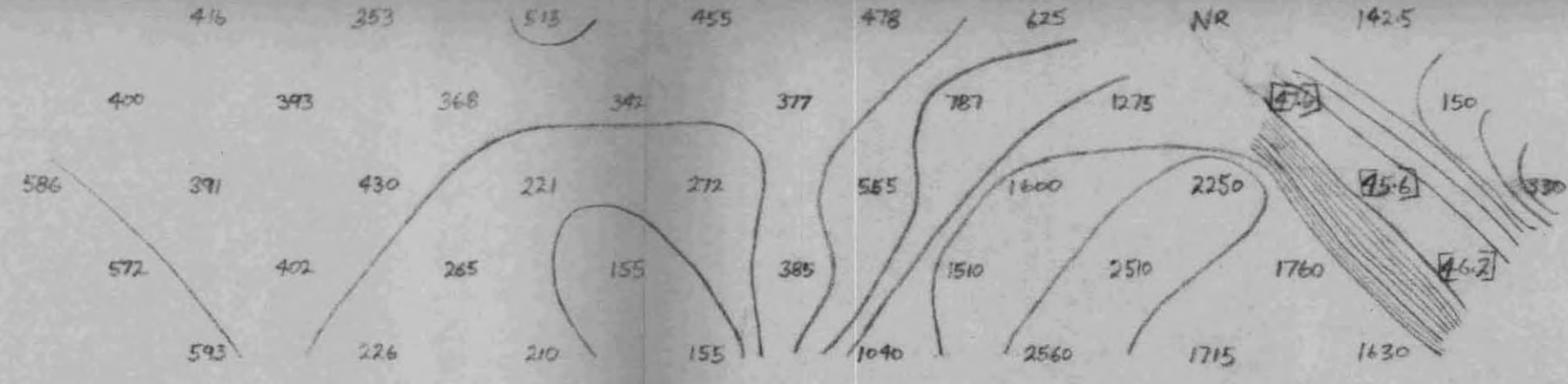
MF

FE

CYPRUS EXPLORATION CORPORATION LTD.
 BIG UNION
 SMITHERS, B.C.
 STD. I.P. DIPOLE-DIPOLE
 FREQUENCIES: 5.0 ± 0.3
 SCALE: 1 INCH = 500 FEET
 LINE 40 N
 AUGUST / 1970

RONALD B. MERTENS

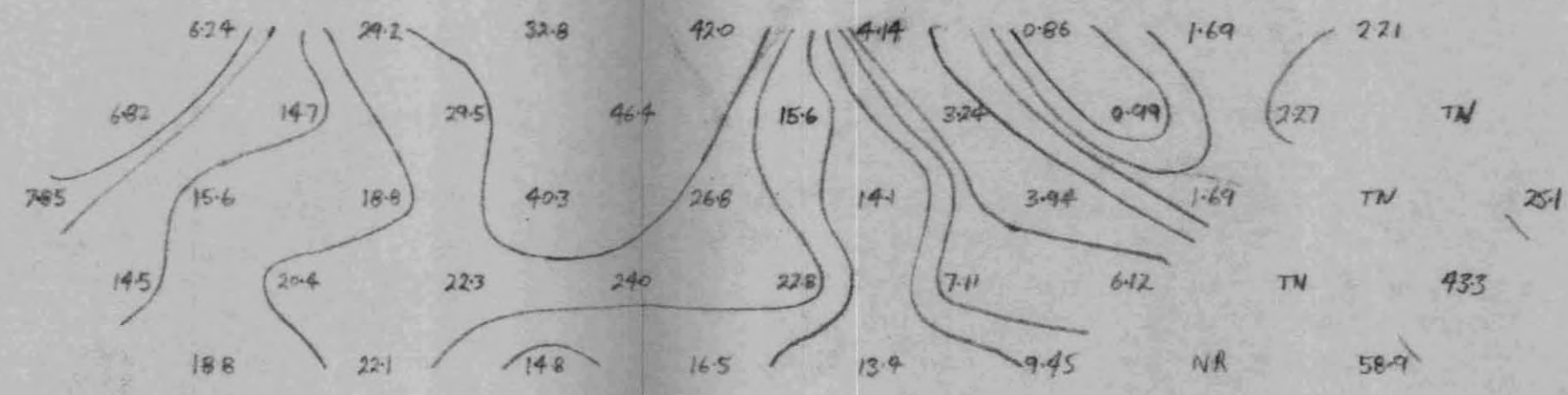




P/211

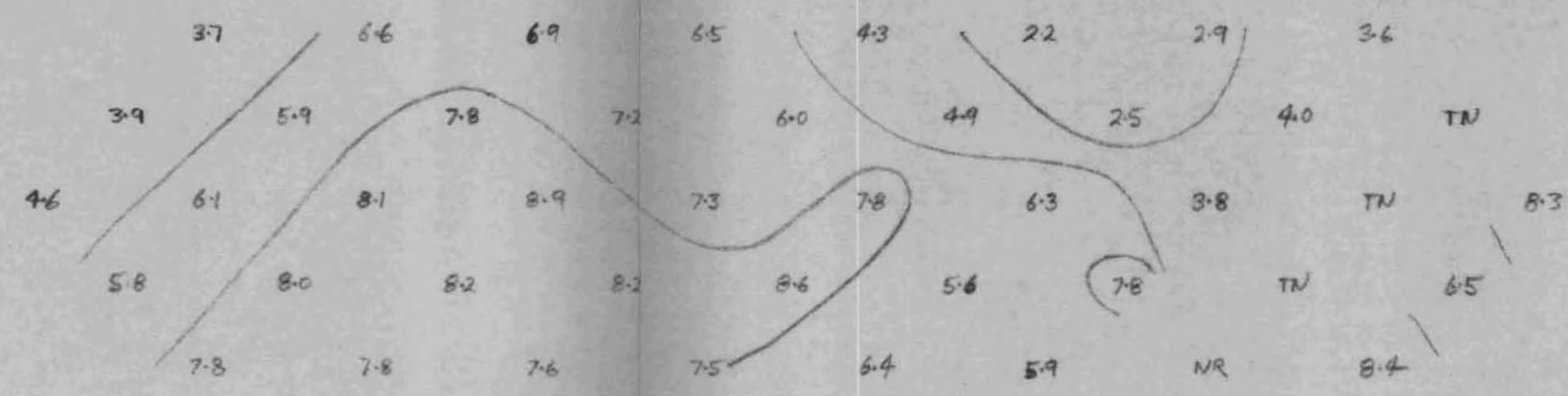
CYPRUS EXPLORATION CORPORATION LTD
 BIG ONION
 SMITHERS B.C.
 STD. I.P. DIPOLE - DIPOLE
 FREQUENCIES: 5.0 & 0.3 cps
 SCALE: 1 INCH = 500 FEET
 LINE: 48 N
 AUGUST/1970

40w 35w 30w 25w 20w 15w 10w 05w 00 05E 10E 15E 20E 25E

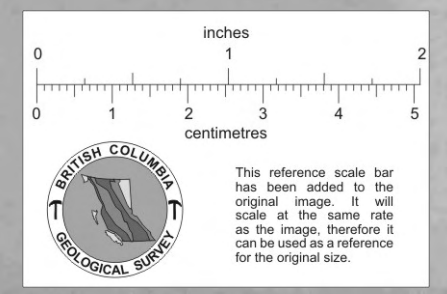
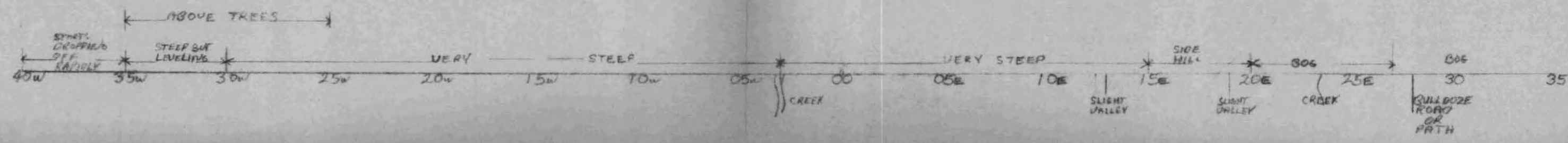


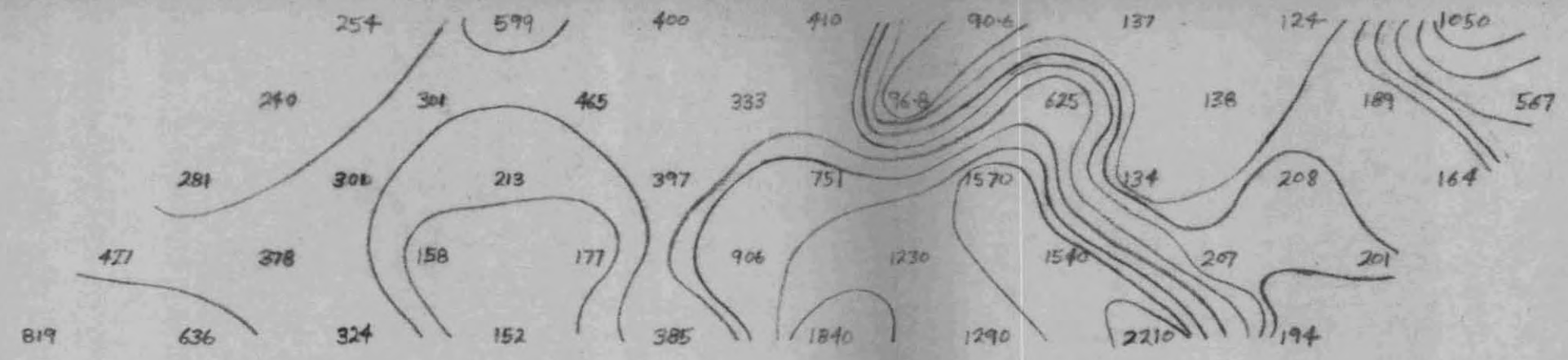
MF

RONALD B. MERTENS

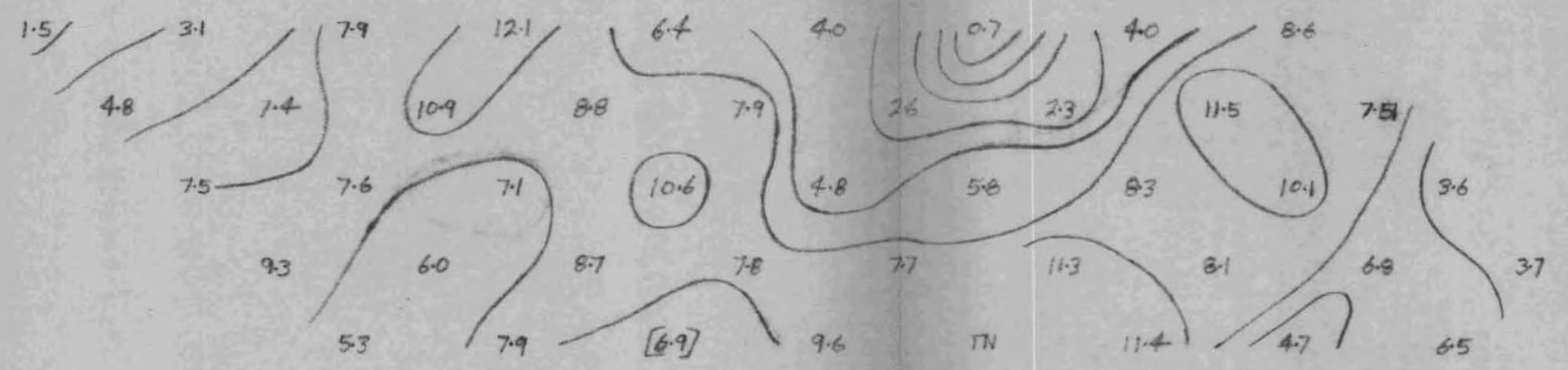
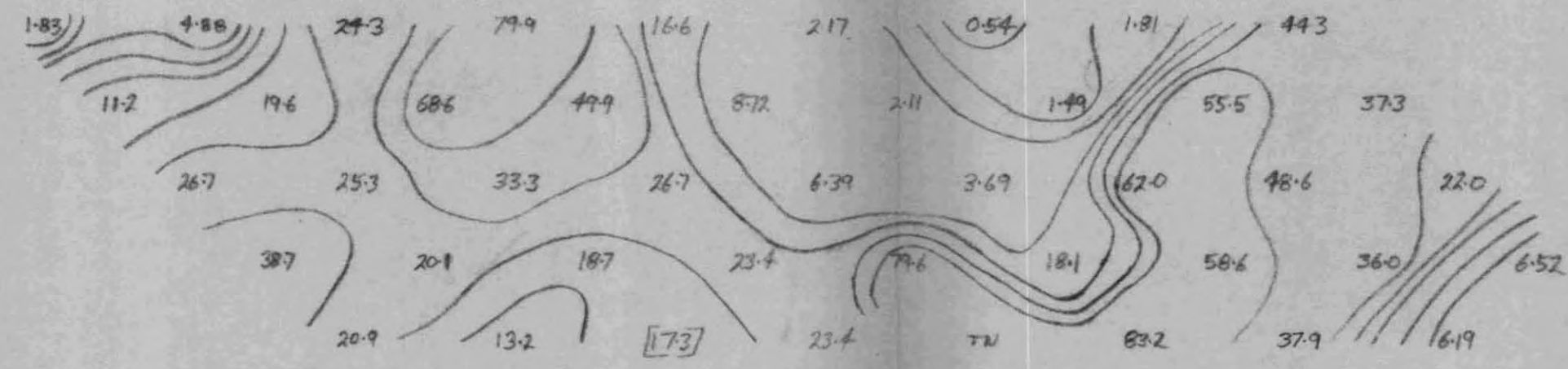


FE





35 30 25 20 15 10 05w 00 05e 10e 15E 20E 25E 30E 35E



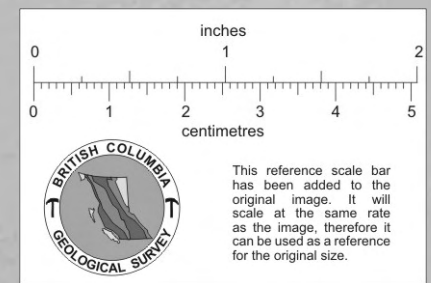
P
2IT

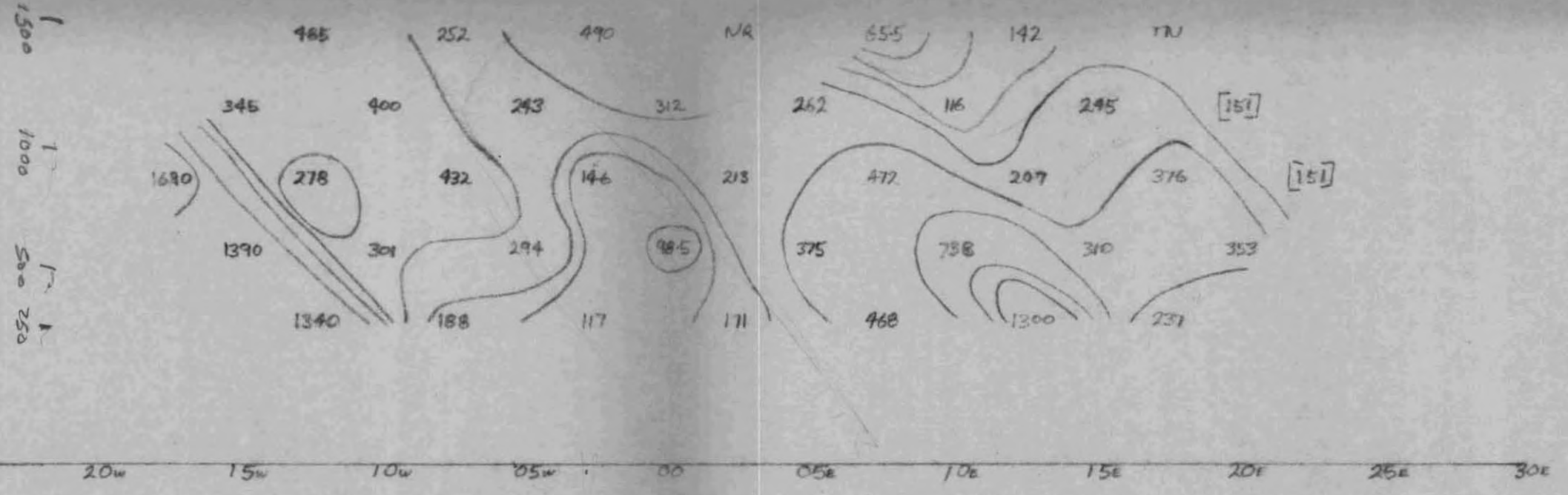
MF

FE

CYPRUS EXPLORATION CORPORATION LTD.
 BIG ONION
 SMITHERS, B.C.
 STD. I.P. DIPOLE - DIPOLE
 FREQUENCIES: 5.0 + 0.3 cps.
 SCALE: 1 INCH = 500 FEET
 LINE: 56 N
 AUGUST/1970

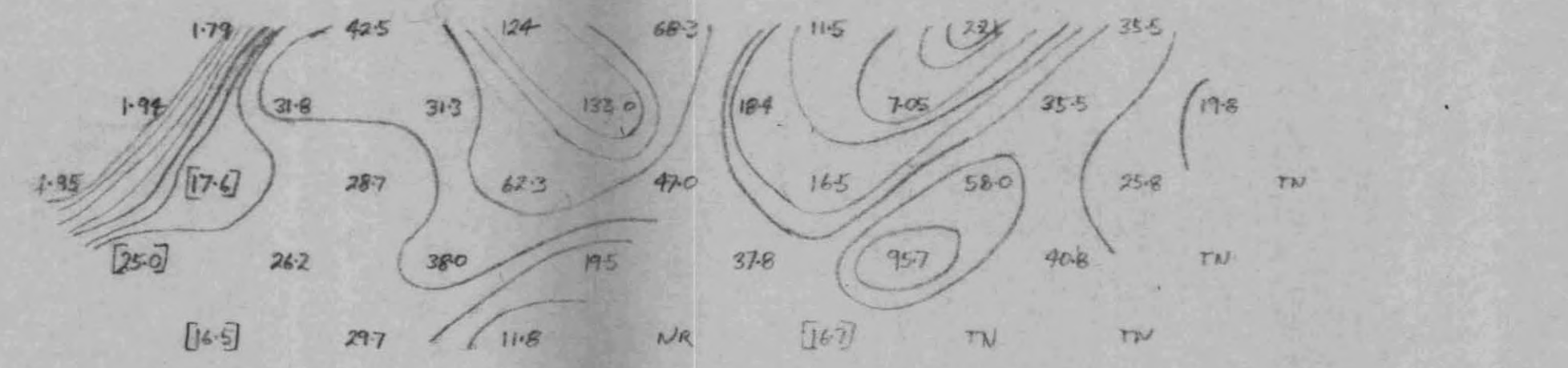
RONALD B. MERTENS





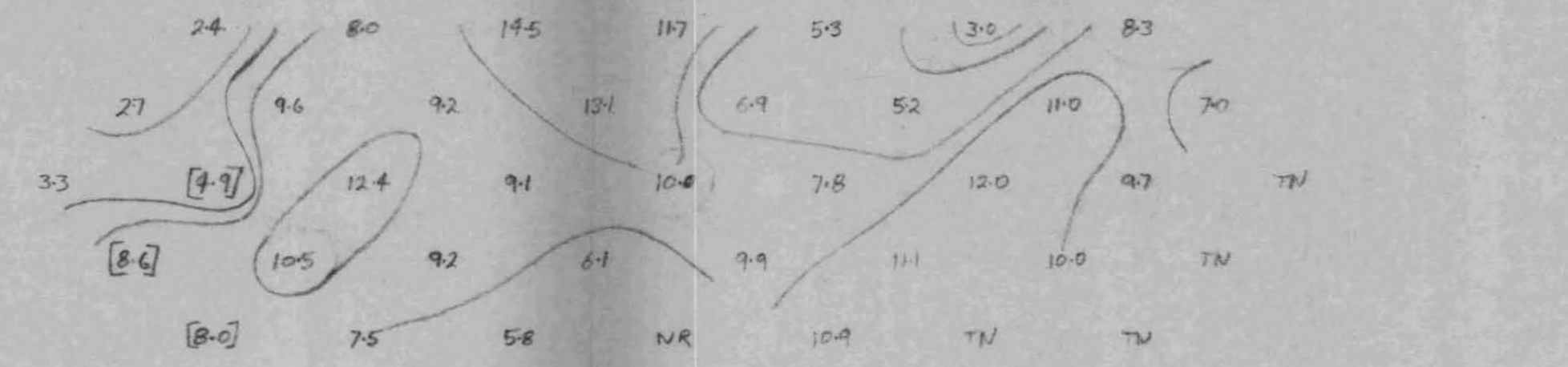
P/2π

CYPRUS EXPLORATION CORPORATION LTD
 BIG ONION
 SMITHERS, B.C.
 STG. I.P. DIPOLE - DIPOLE
 FREQUENCIES: 5.000.3 cps
 SCALE: 1 INCH = 500 FEET
 LINE: 64 N
 AUGUST / 1970

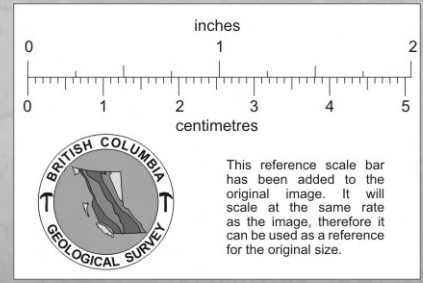


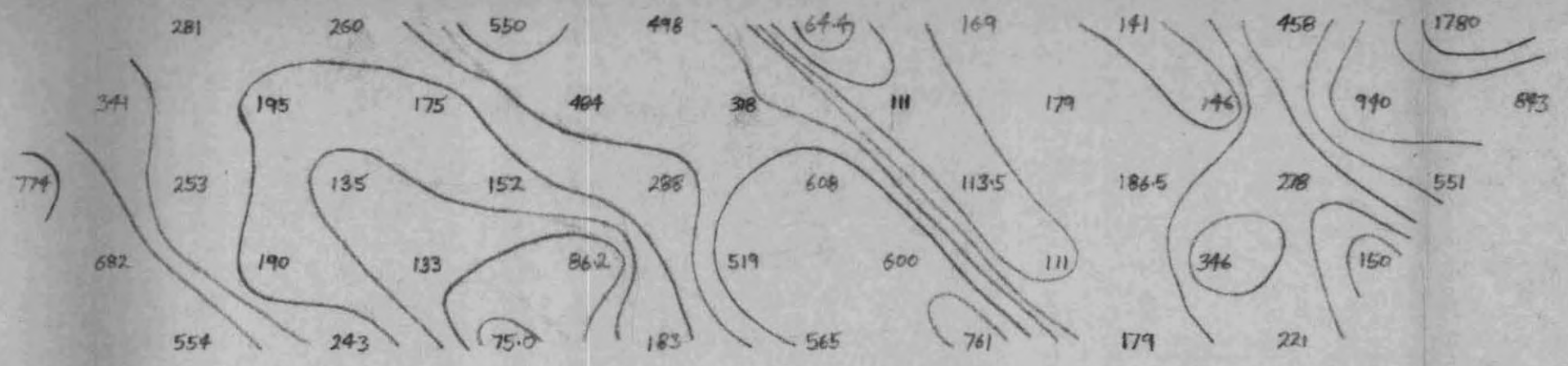
MF

RONALD B. MERTENS



FE

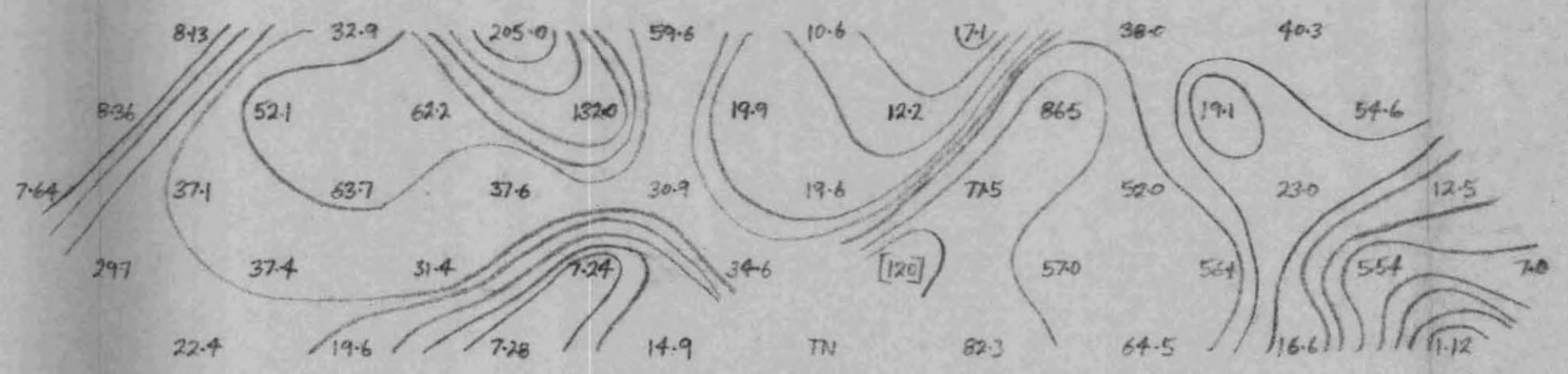




P
2π

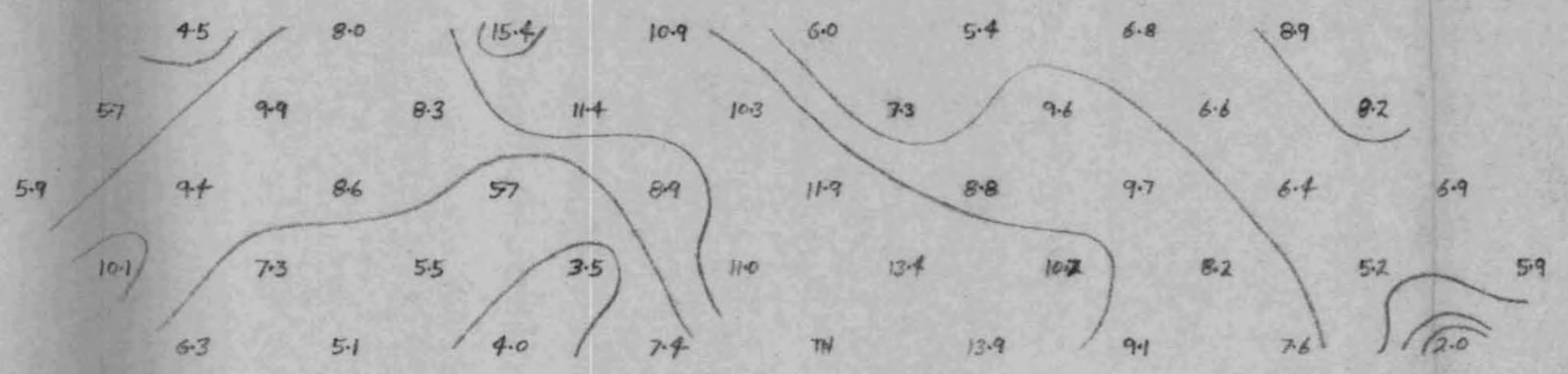
CYPRUS EXPLORATION CORPORATION LTD.
 BIG ONION
 SMITHERS, B.C.
 STG. I.P. DIPOLE-DIPOLE
 FREQUENCIES: 5.0 & 0.3 cps
 SCALE 1 INCH = 500 FEET
 LINE: 72N
 AUGUST / 1970

35w 30w 25w 20w 15w 10w 05w 00 05E 10E 15E 20E 25E 30E



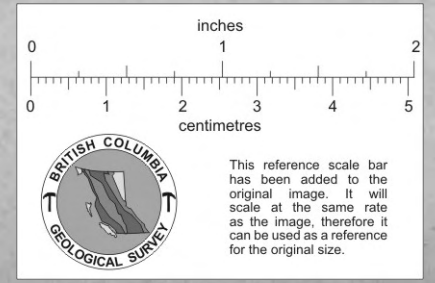
MF

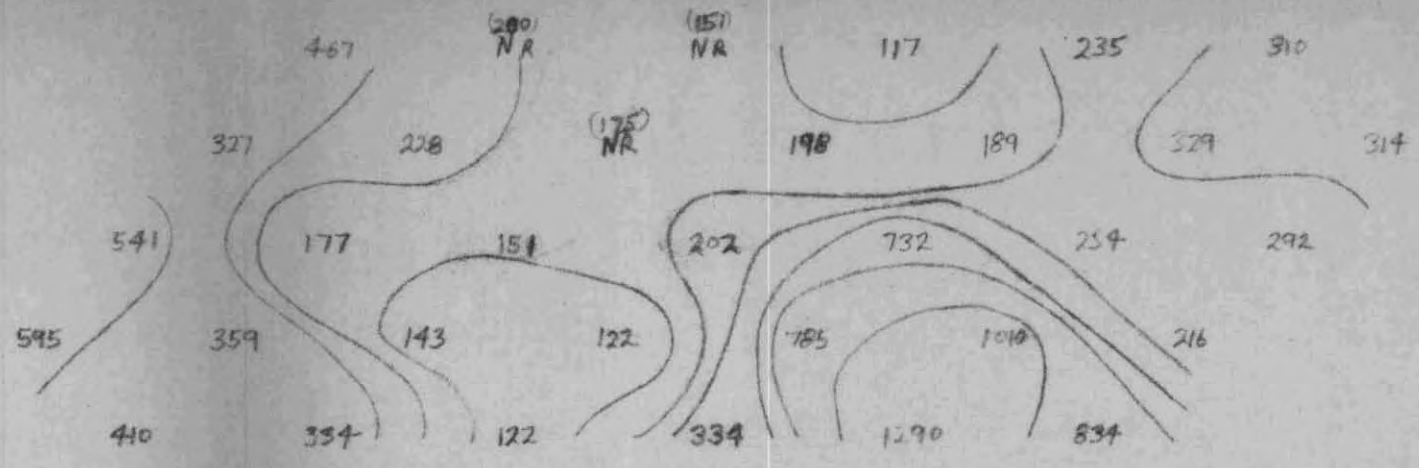
RONALD B. MERTENS



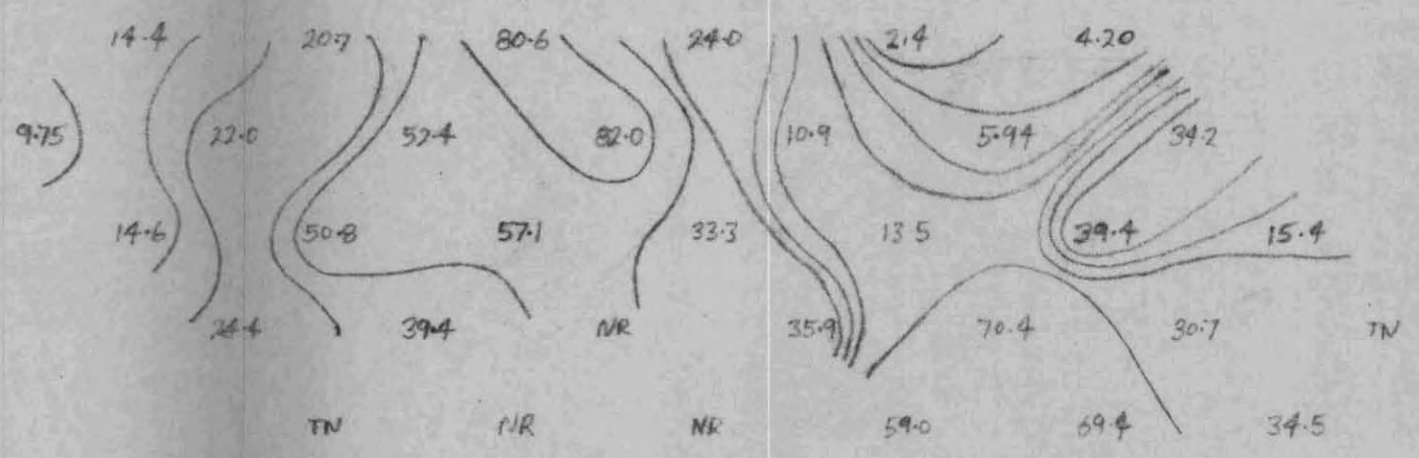
FE

CLIFF DOWN PEAK UP ROAD POND ROAD
 VERY STEEP SLOPES WITH TALUS AND OUTCROP CLIFFS ROLLING TERRAIN HILLS AND MEADOW ALTERNATING
 35w 30w 25w 20w 15w 10w 05w 00 05E 10E 15E 20E 25E 30E





35w 30w 25w 20w 15w 10w 05w 00 05E 10E 15E 20E 25E 30E 35E

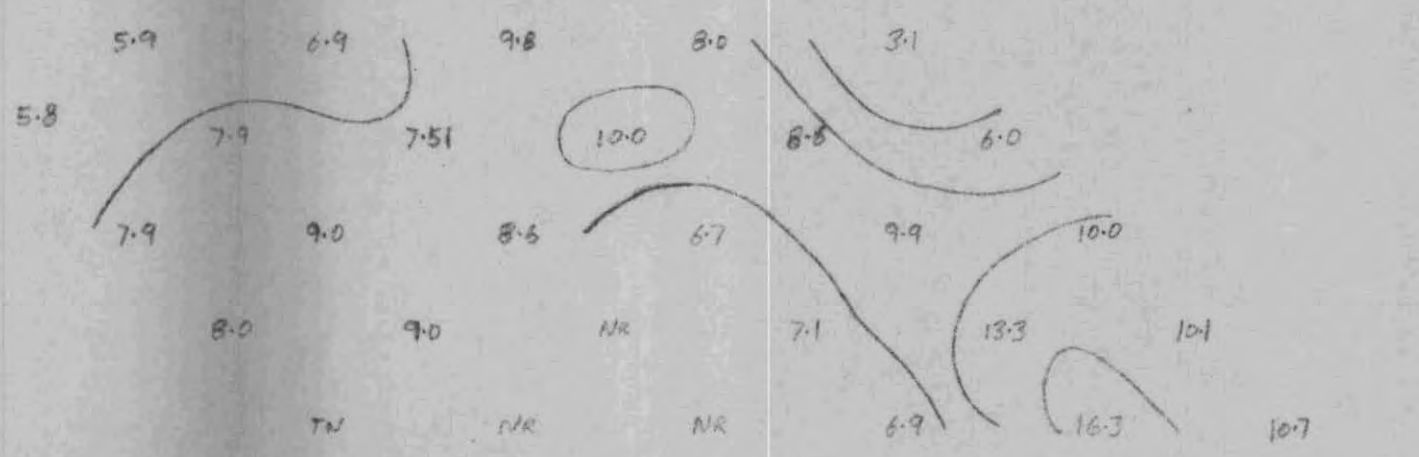


P/2T

CYPRUS EXPLORATION CORPORATION LTD.
 BIG ONION
 SMITHERS B.C.
 STD I.P. DIPOLE-DIPOLE
 FREQUENCIES: 5.0 & 0.3 cps
 SCALE 1 INCH=500 FEET
 LINE: 80W
 AUGUST/1970

MF

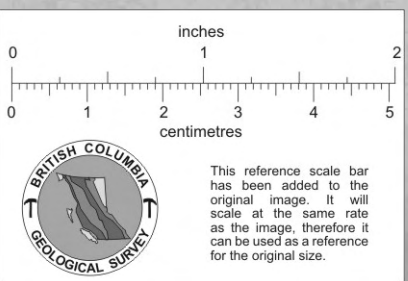
RONALD B. MERTEENS

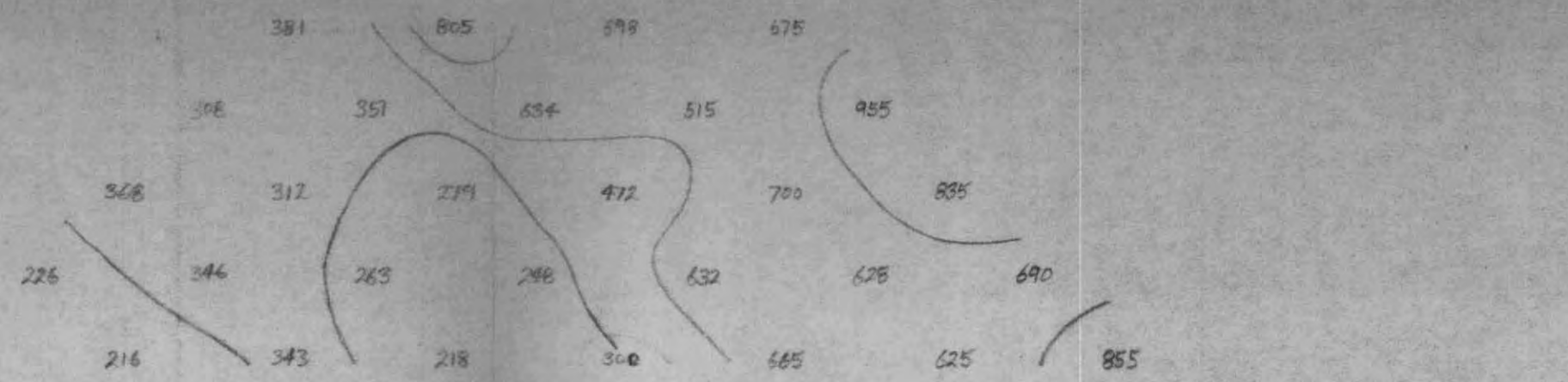


FE

CLIFF SIDE HILL STEEP WITH TALUS TALUS SLOPE TALUS SLOPE ROLLING HILLS OUTCROP AND MOOSE PASTURE ALTERNATING

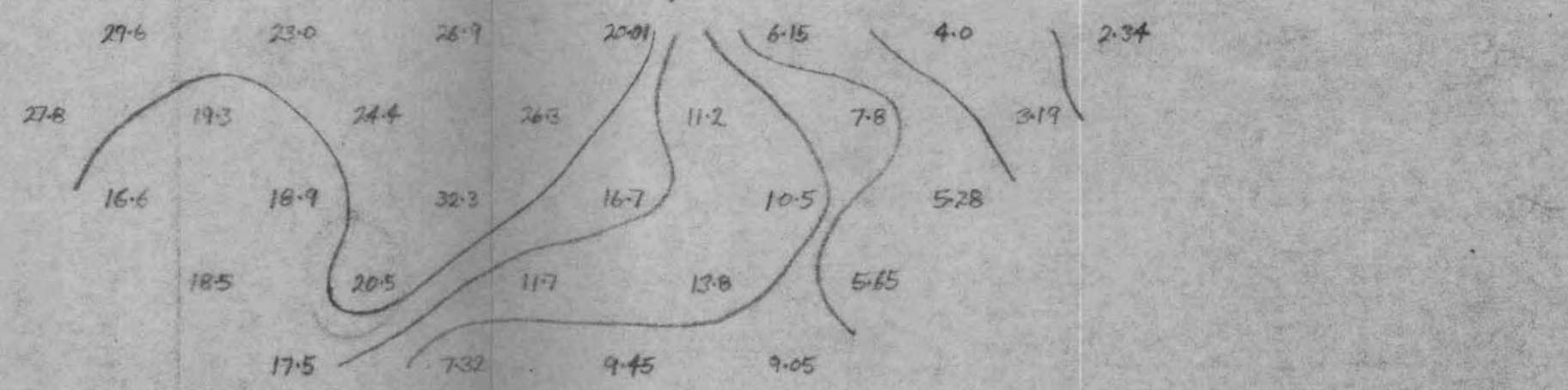
35w 30w 25w 20w 15w 10w 05w 00 05E 10E 15E 20E 25E 30E 35E





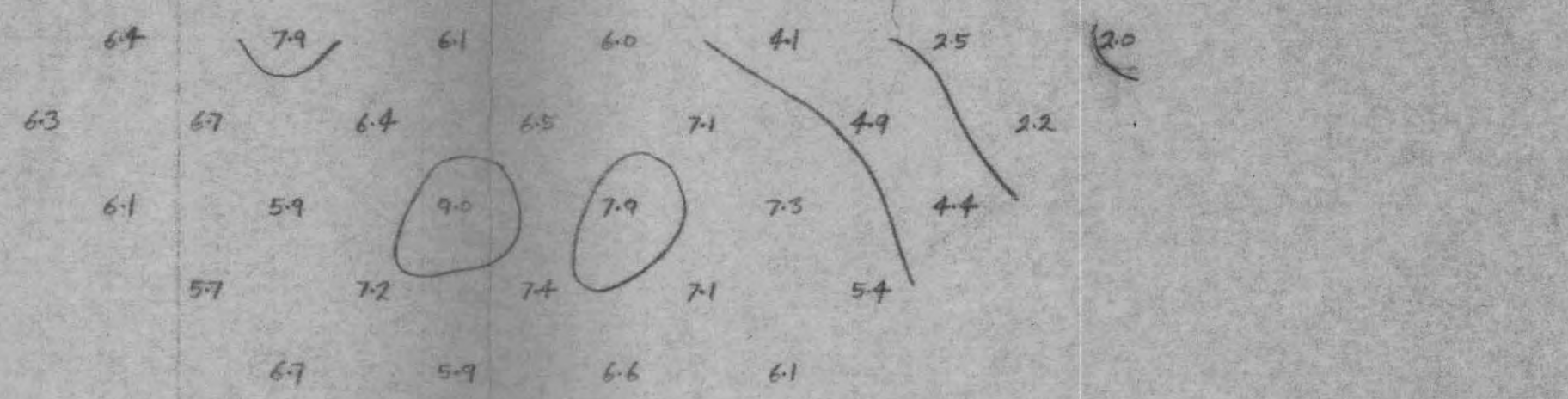
P/2IT

CYPRUS EXPLORATION CORPORATION LTD
 BIG ONION
 SMITHERS B.C.
 STD. I.P. DIPOLE - DIPOLE
 FREQUENCIES: 5.0 & 0.3 cps
 SCALE: 1 INCH = 500 FEET
 LINE: 88N
 SEPTEMBER / 1970



MF

RONALD B. MERTENS



FE

