

N. 55° W.

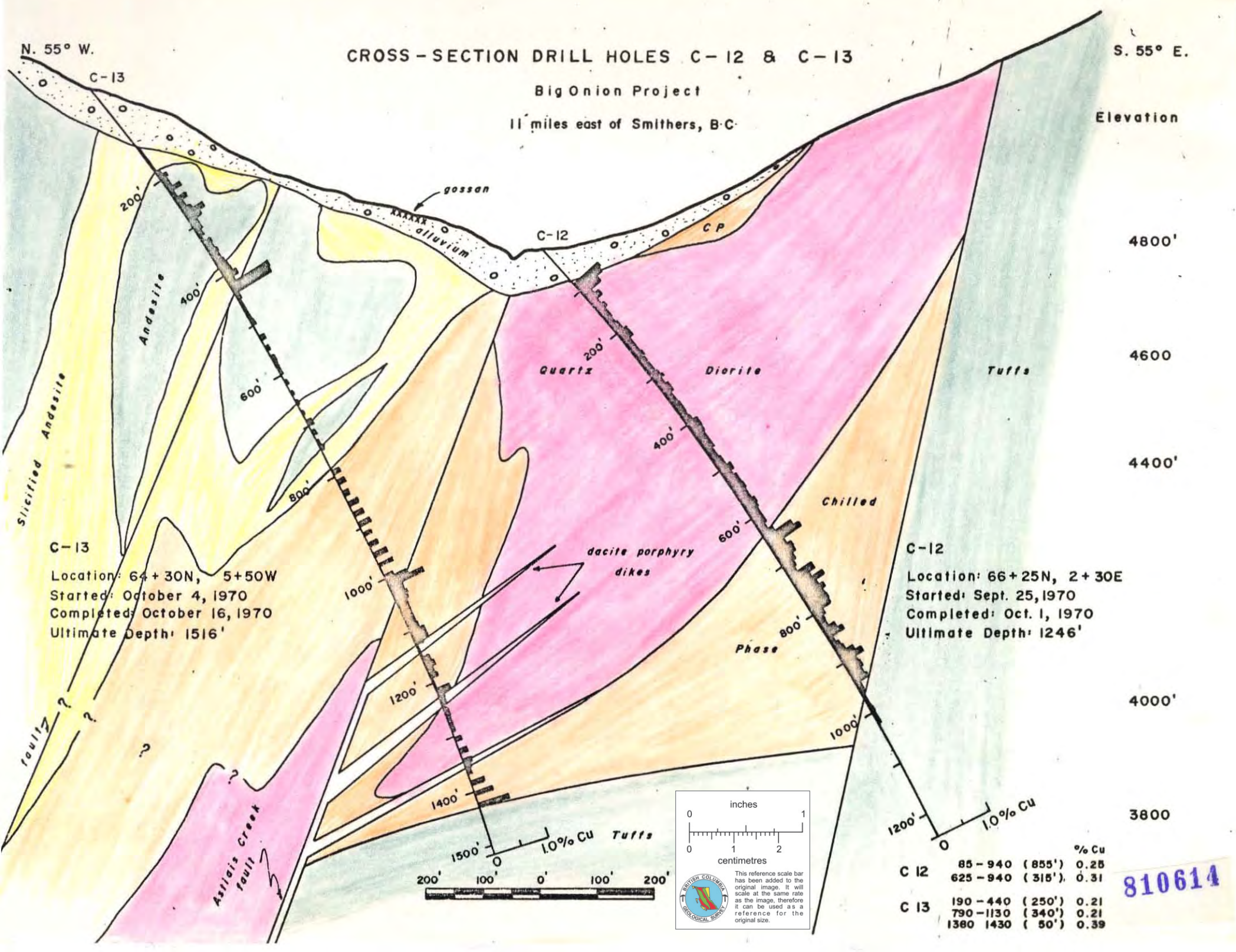
CROSS-SECTION DRILL HOLES C-12 & C-13

S. 55° E.

Big Onion Project

11 miles east of Smithers, B.C.

Elevation



4800'

4600'

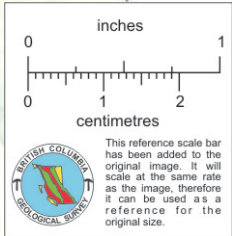
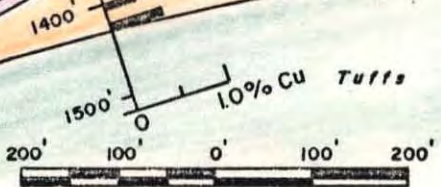
4400'

4000'

3800'

C-13
 Location: 64+30N, 5+50W
 Started: October 4, 1970
 Completed: October 16, 1970
 Ultimate Depth: 1516'

C-12
 Location: 66+25N, 2+30E
 Started: Sept. 25, 1970
 Completed: Oct. 1, 1970
 Ultimate Depth: 1246'



		% Cu
C 12	85 - 940 (855')	0.28
	625 - 940 (315')	0.31
C 13	190 - 440 (250')	0.21
	790 - 1130 (340')	0.21
	1380 - 1430 (50')	0.39

810614