

810584

Blue Rock Mining Corporation Ltd.

Summary of Exploration of the
Big Onion Prospect

January 1972 93L-15 G. A. Jilson

SUMMARY OF EXPLORATION OF
THE BIG ONION PROSPECT

BLUE ROCK MINING CORPORATION LTD.

The Big Onion prospect is located on Astlais Mountain approximately 12 miles northeast of Smithers in the Omineca Mining Division, British Columbia. The property is readily accessible via the Smithers - Babine Lake road. An extensive system of 4 wheel drive roads provides access to most of the property and adjoining areas. Elevations range from 3000 to 5800 feet. The western portion of the property is characterized by rolling topography, at the base of Astlais Mountain; the topography becomes very steep to the east on Astlais Mountain proper.

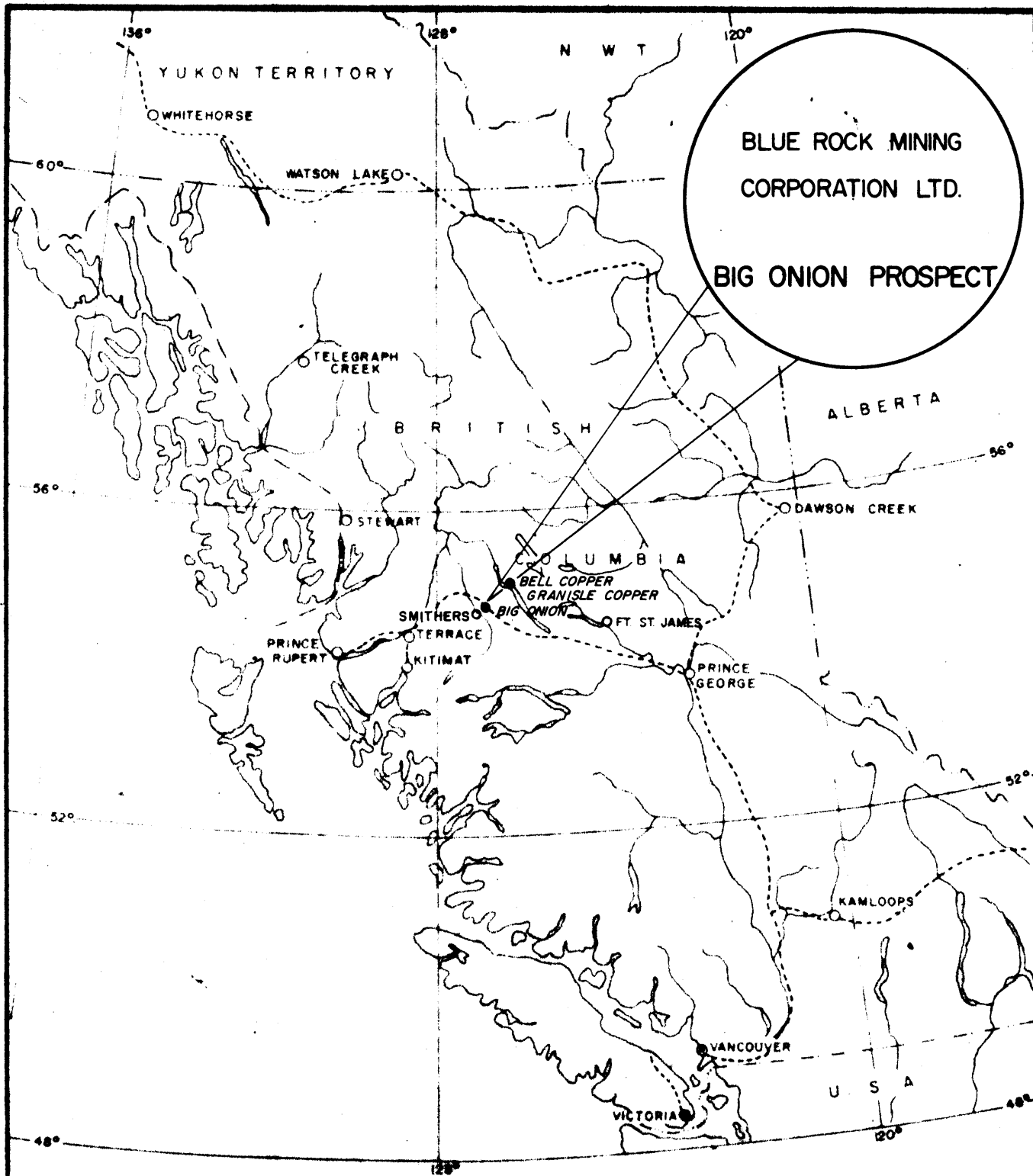
The property consists of 123 full and fractional mineral claims 79 of which are in good standing until 1980, most of the remainder to 1973.

The property has a long history of activity most notably by Noranda Exploration Company in 1964 and Texas Gulf Sulphur Company in 1966 and 1967. Texas Gulf Sulphur carried out geological, geochemical and geophysical surveys and drilled 7 holes totalling 3993 feet. Blue Rock Mining Corporation Ltd., a wholly owned subsidiary of Cyprus Mines Corporation, optioned the property 1970. Blue Rock carried out additional I. P. surveying and drilled 24,128 feet in 22 holes. The work by Blue Rock has outlined a zone of mineralization 7000 feet long containing 93 million tons of material averaging 0.245% Cu plus moly credits. This generally steeply dipping zone occurs mainly along the southeastern and lower contact zone of a strongly altered and pyritized intrusive mass of medium grained equigranular to subporphyritic quartz diorite. The quartz diorite proper is surrounded by a very complex and heterogeneous border phase that consists partly of a chilled facies of the quartz diorite but also contains strongly sheared and altered quartz diorite proper and possibly sheared and altered country rock. The quartz dioritic complex is in turn surrounded by an extensive area of silicification and pyritization of the andesitic country rock.

The quartz diorite pluton is interesting in that it appears to have no feeder at depth with the possible exception of a dyke-like feeder along its northwestern margin. There is no compelling evidence in the drill holes for such a feeder. The intrusive may be a laterally intruded mass or an originally vertical, irregular, stocklike mass now tilted on its side.

The possibility exists of extending the known zone of mineralization to the northeast beyond hole C-14. A limited program of geological mapping and soil sampling would probably serve to delimit such an extension. Further I. P. surveying and drilling should be carried out if the extension seems likely. In conjunction with the above geological program, reconnaissance mapping might be carried out over the area surrounding the Big Onion prospect to determine the relationship and importance of known copper occurrences nearby and to determine if the quartz diorite and its alteration halo represents the extent of the sulphide system on Astlais Mountain.

A point of interest when considering the Big Onion is its unique topographic and structural setting. If the existence of a feeder dyke is denied then the mineralized and fractured quartz diorite and silicified andesite lies in a trough extending downhill with a relatively little fractured bottom of country rock. In addition, the trough is cut off at the base of the hill by a fresh, little fractured monzonite dyke which appears to have dammed the natural groundwater migrating down the trough. Such a setting offers intriguing possibilities for an in situ leaching approach to mining.

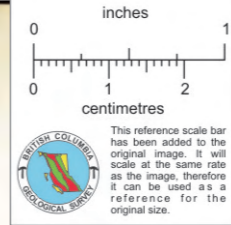


PROPERTY LOCATION MAP

BRITISH COLUMBIA
SCALE 1" = 125 MILES

N 30° W

S 30° E

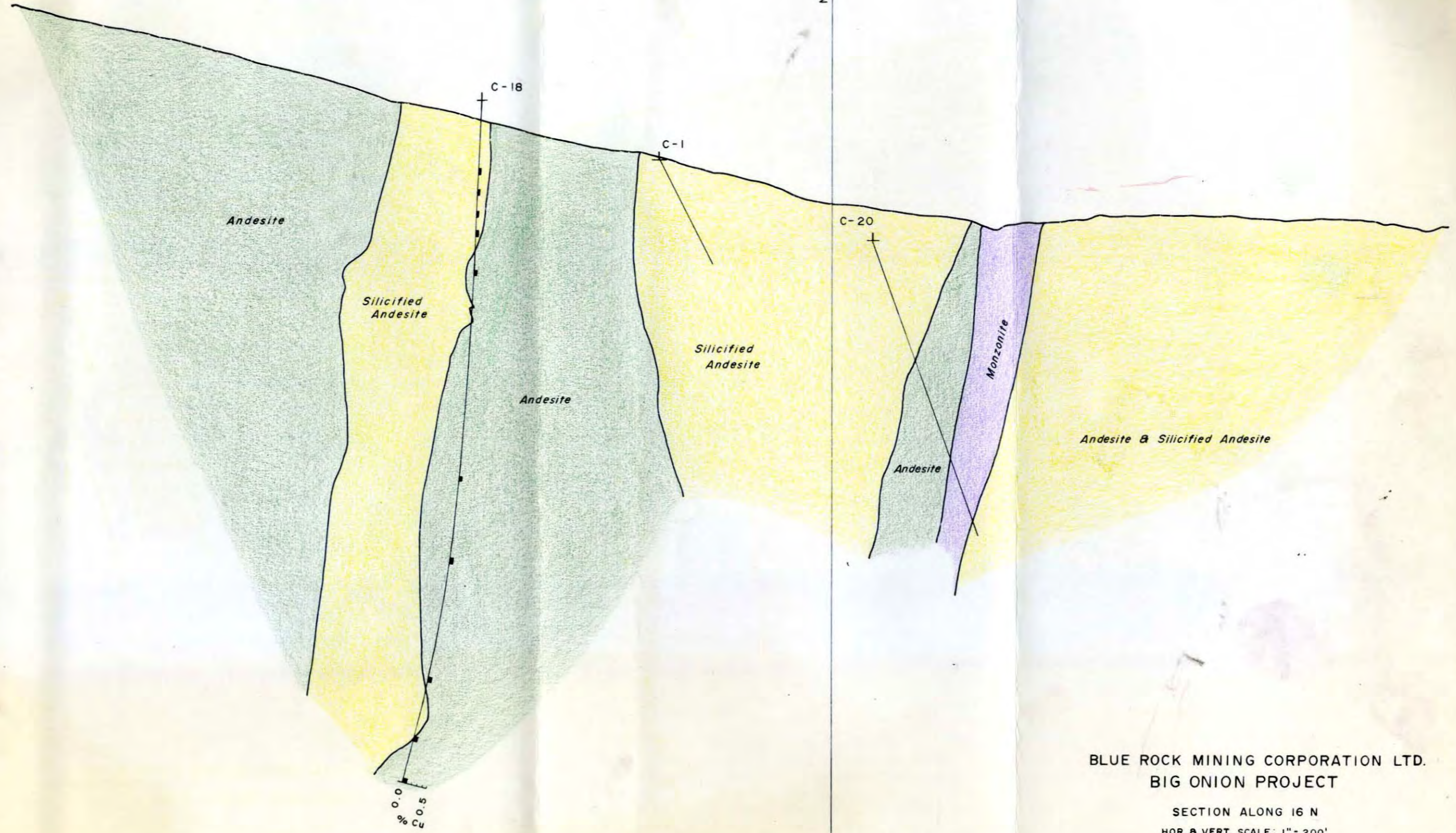


4000

4000' REFERENCE LINE

NORTH BASELINE 0 E

3800
3600
3400
3200
3000
2800
2600
2400

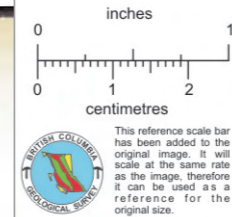


BLUE ROCK MINING CORPORATION LTD.
BIG ONION PROJECT

SECTION ALONG 16 N
HOR. & VERT. SCALE: 1" = 200'

N 30° W

S 30° E



4200

4000

4000' REFERENCE LINE

3800

3600

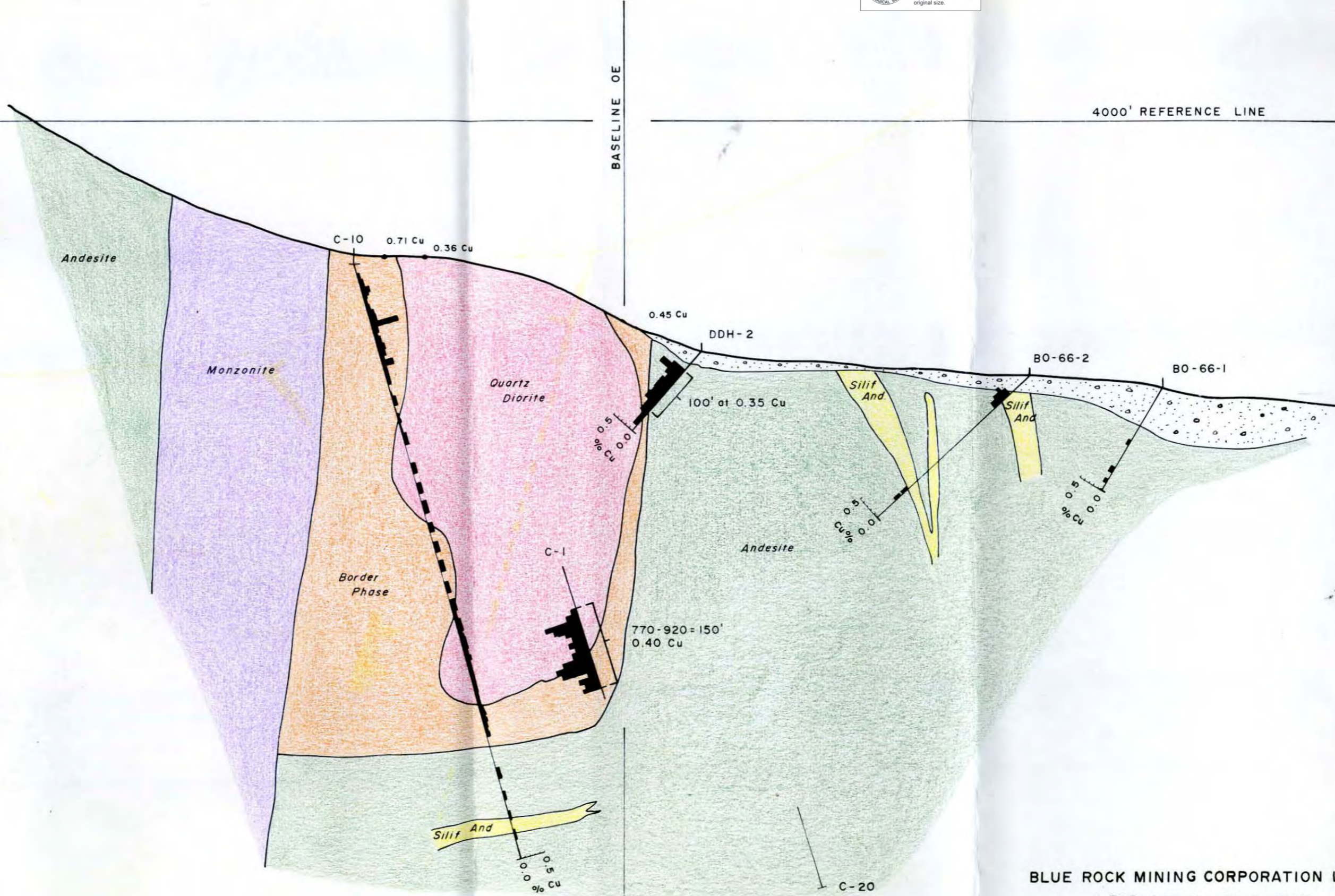
3400

3200

3000

2800

2600

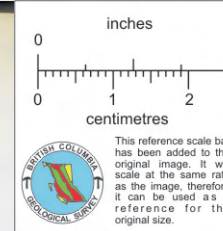


BLUE ROCK MINING CORPORATION LTD.
BIG ONION PROJECT

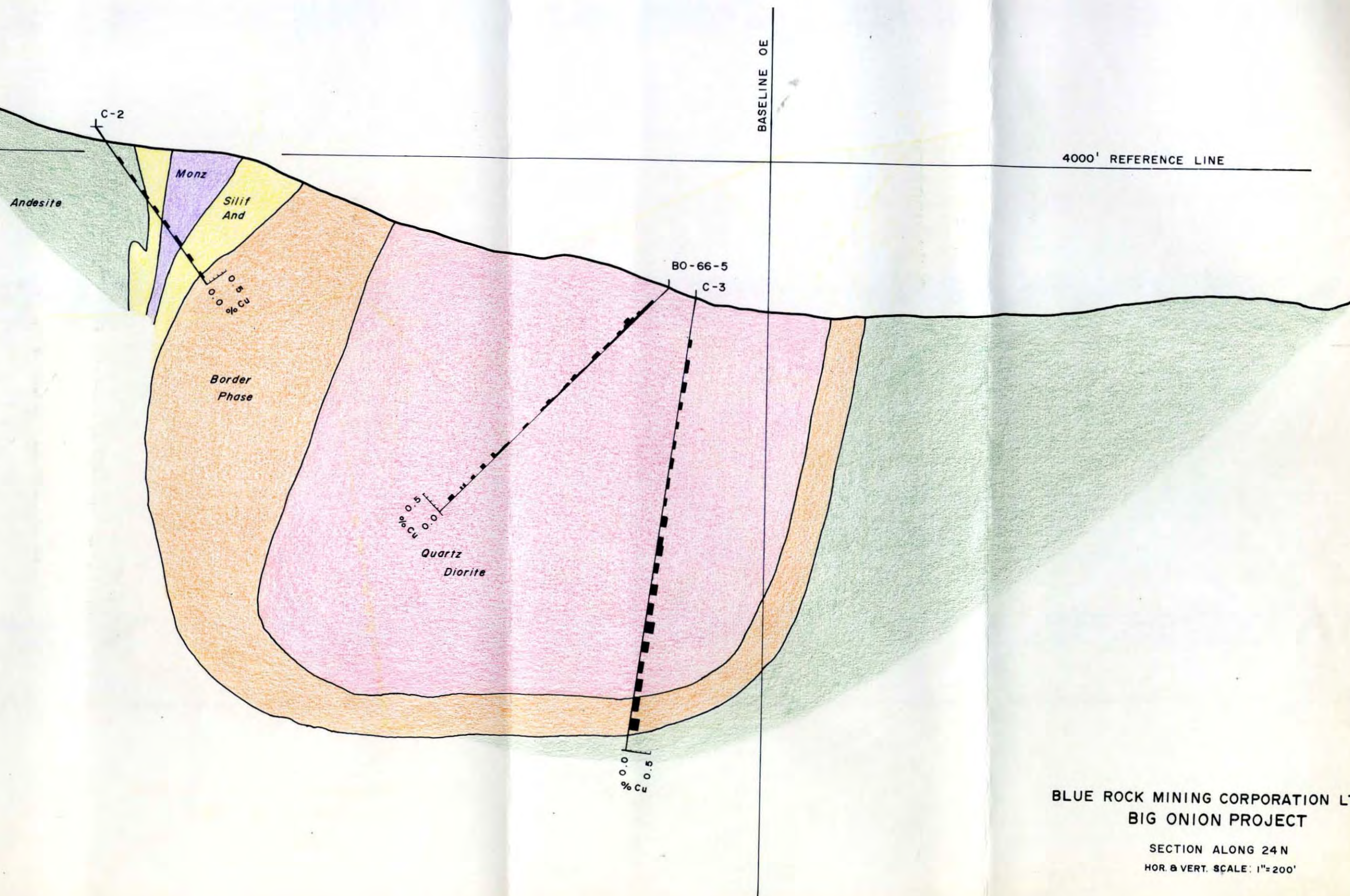
SECTION ALONG 20N
HOR & VERT. SCALE: 1" = 200'

N 30° W

S 30° E



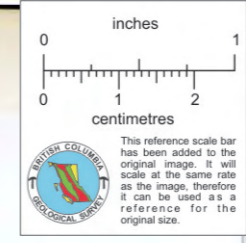
4400
 4200
 4000
 3800
 3600
 3400
 3200
 3000
 2800
 2600



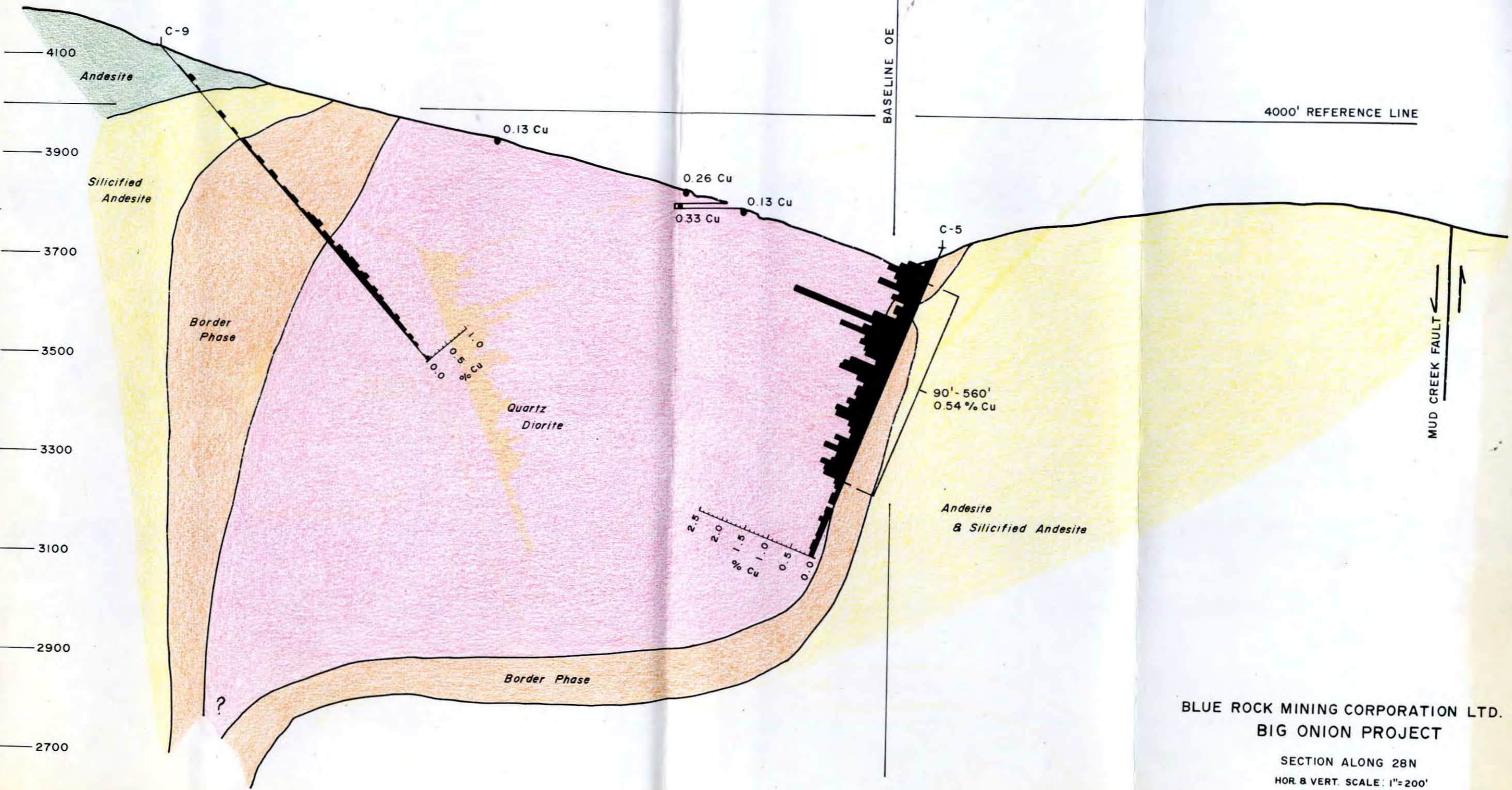
BLUE ROCK MINING CORPORATION LTD.
 BIG ONION PROJECT
 SECTION ALONG 24 N
 HOR. & VERT. SCALE: 1" = 200'

N 30° W

S 30° E

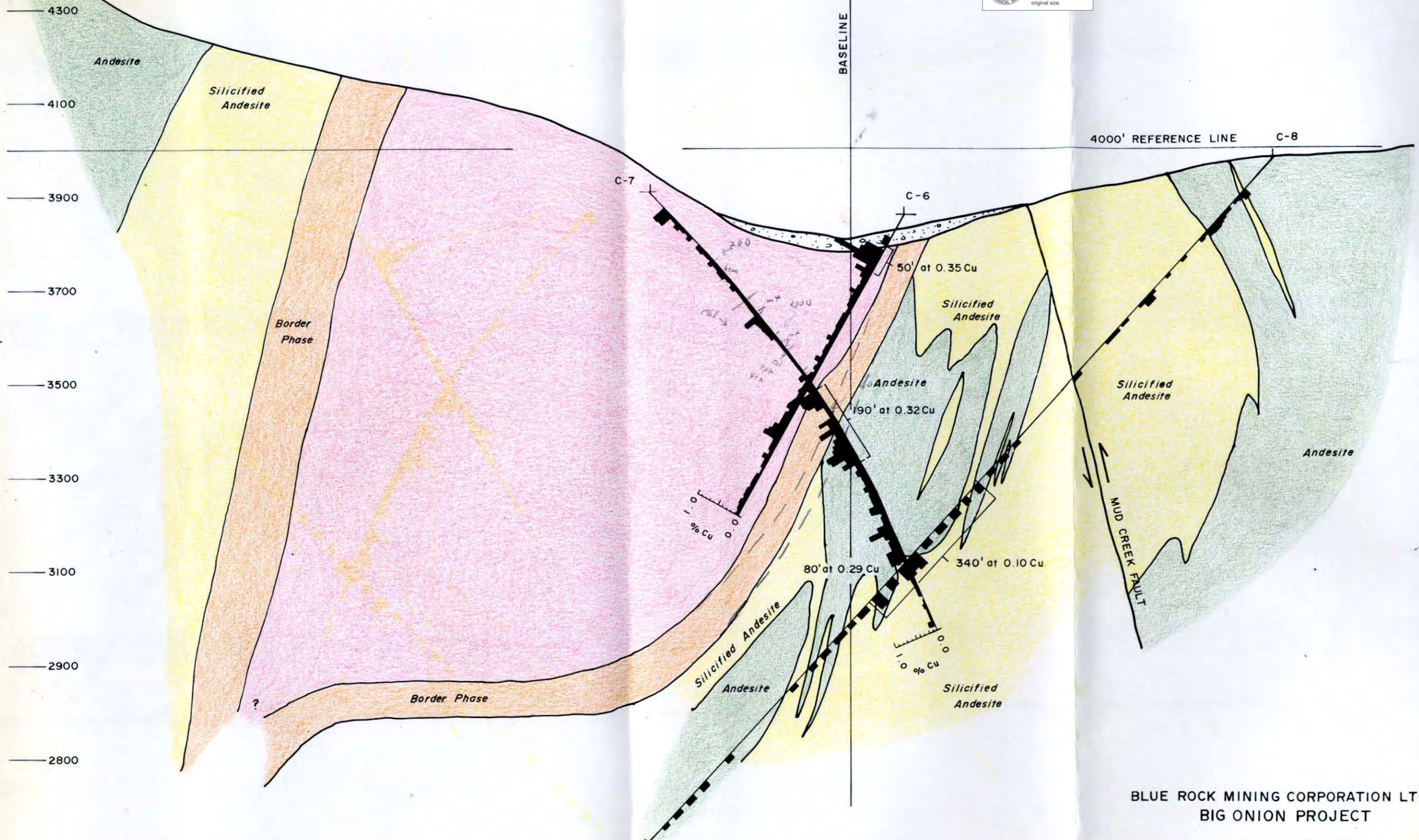
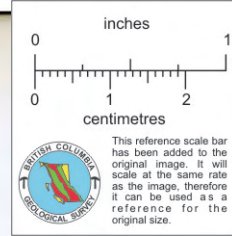


4500
 4300
 4100
 3900
 3700
 3500
 3300
 3100
 2900
 2700



N 30° W

S 30° E

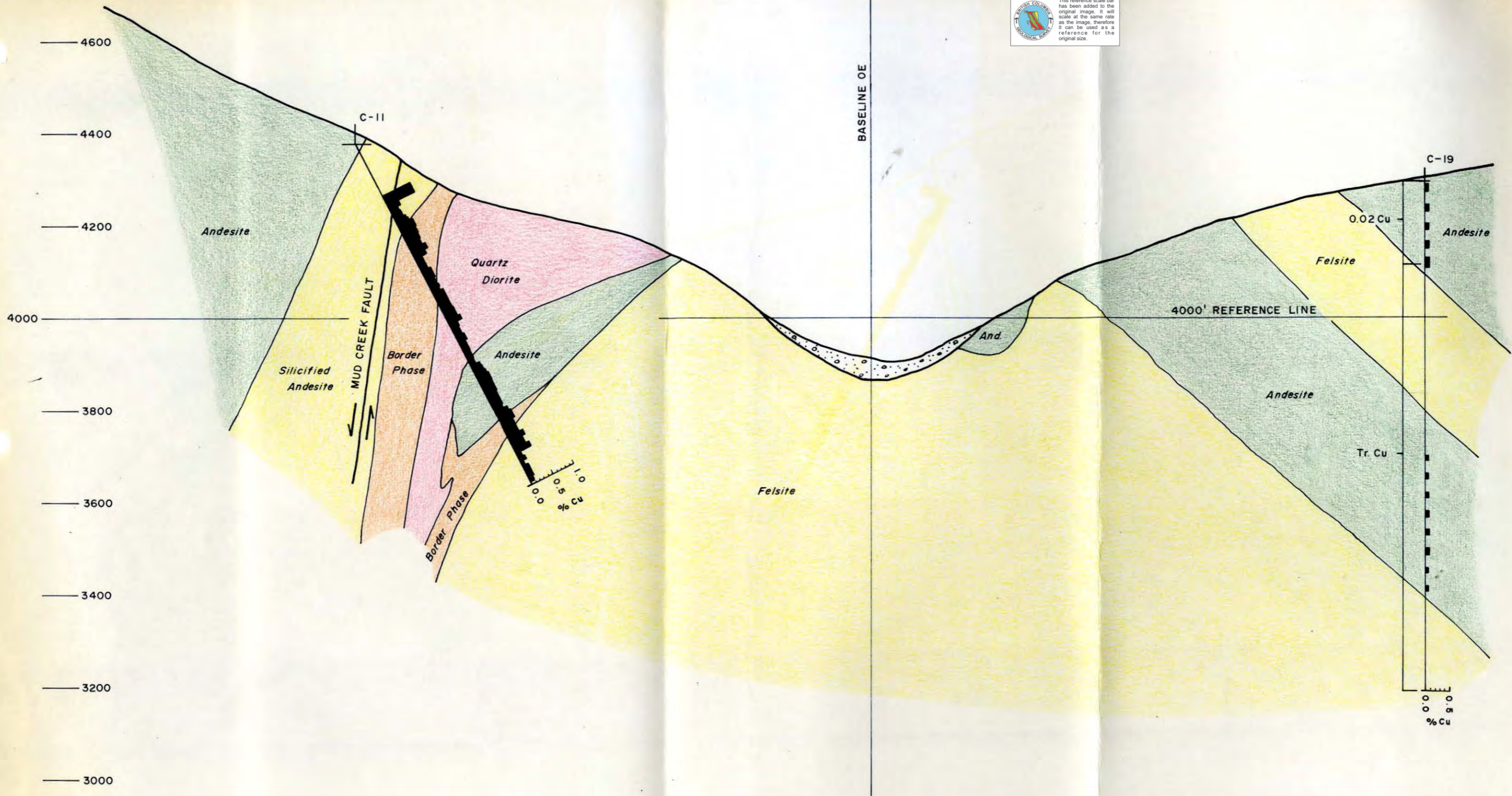
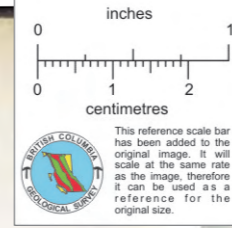


BLUE ROCK MINING CORPORATION LTD.
BIG ONION PROJECT

SECTION ALONG 32 N
HOR. & VERT. SCALE = 200'

N 30° W

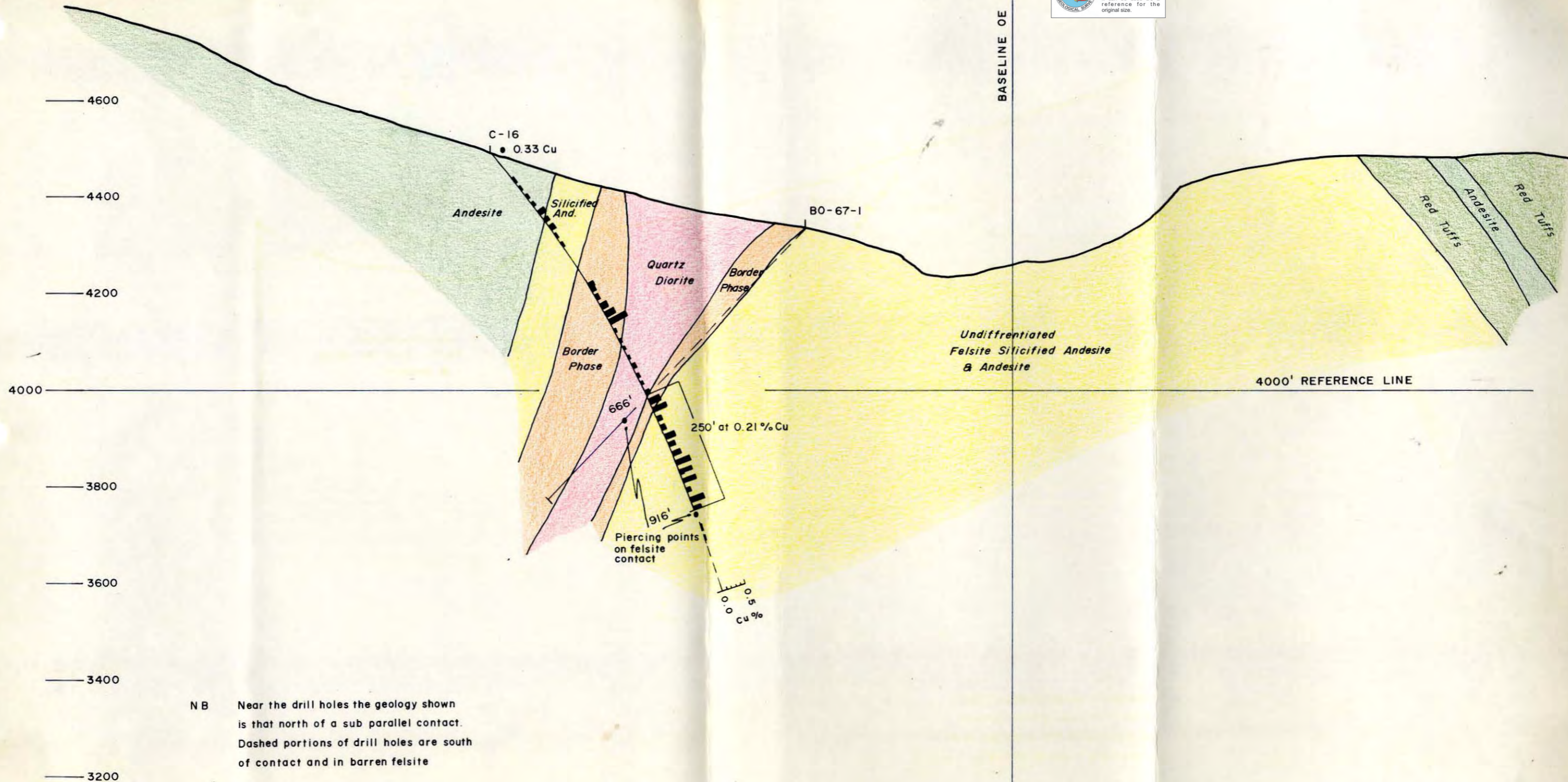
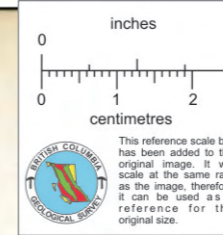
S 30° E



BLUE ROCK MINING CORPORATION LTD.
 BIG ONION PROJECT
 SECTION ALONG 40 N
 HOR. & VERT. SCALE: 1" = 200'

N 30° W

S 30° E

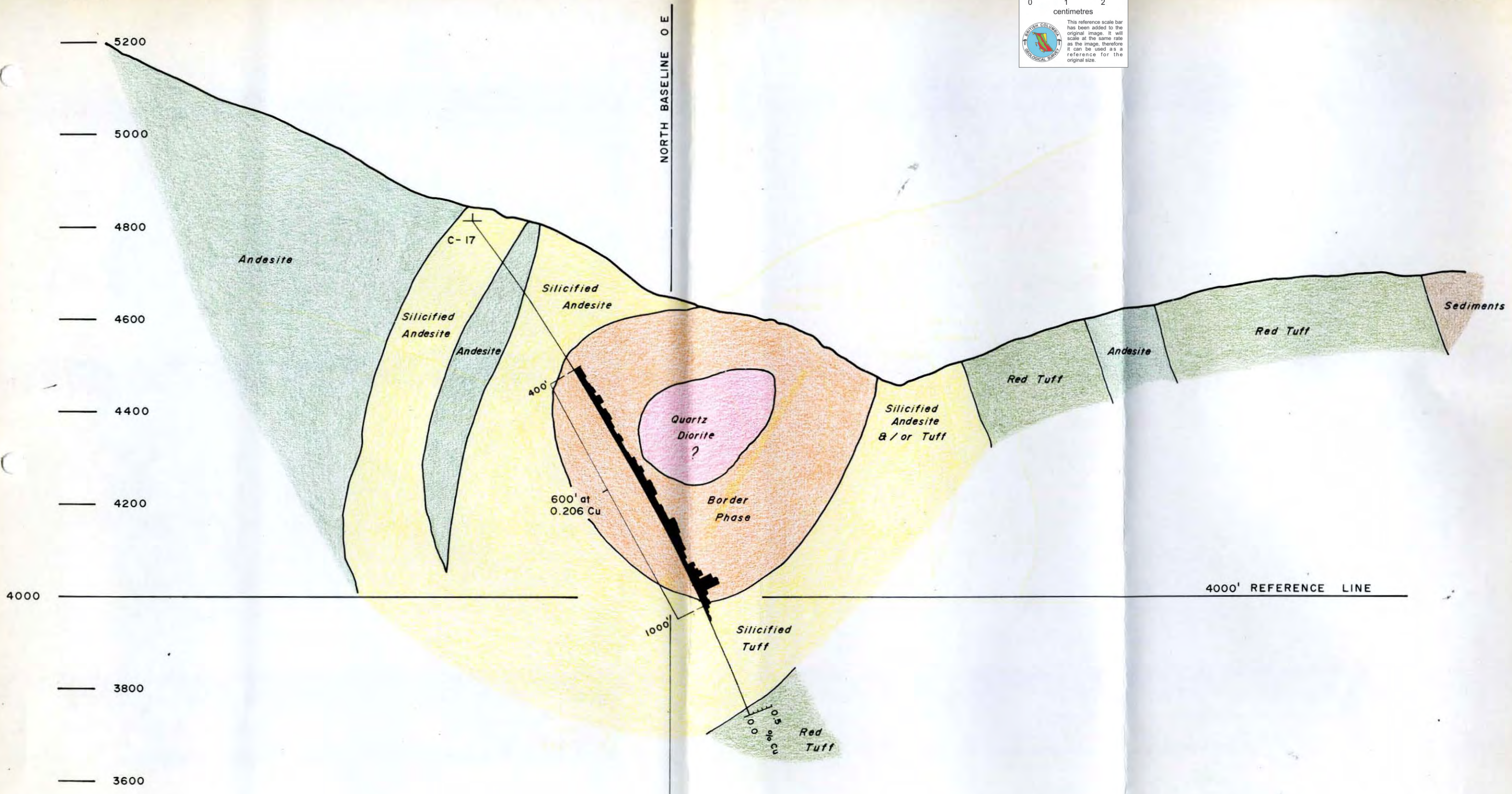
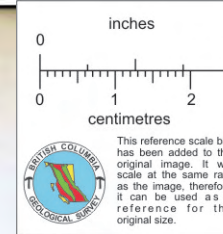


NB Near the drill holes the geology shown is that north of a sub parallel contact. Dashed portions of drill holes are south of contact and in barren felsite

BLUE ROCK MINING CORPORATION LTD.
BIG ONION PROJECT
SECTION ALONG 48 N
HOR. & VERT. SCALE: 1"=200'

N 30° W

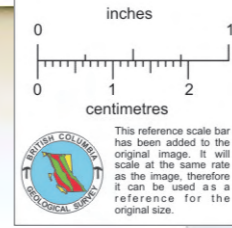
S 30° E



BLUE ROCK MINING CORPORATION LTD.
 BIG ONION PROJECT
 SECTION ALONG 57 N
 HOR. & VERT. SCALE: 1" = 200'

N 30° W

S 30° E



NORTH BASELINE OE

5200
5000
4800
4600
4400
4200
4000
3800
3600

Andesite

No Significant Mineralization Noted

BO-67-2

Silicified Andesite
&/or Border Phase
&/or Felsite

Red Tuffs

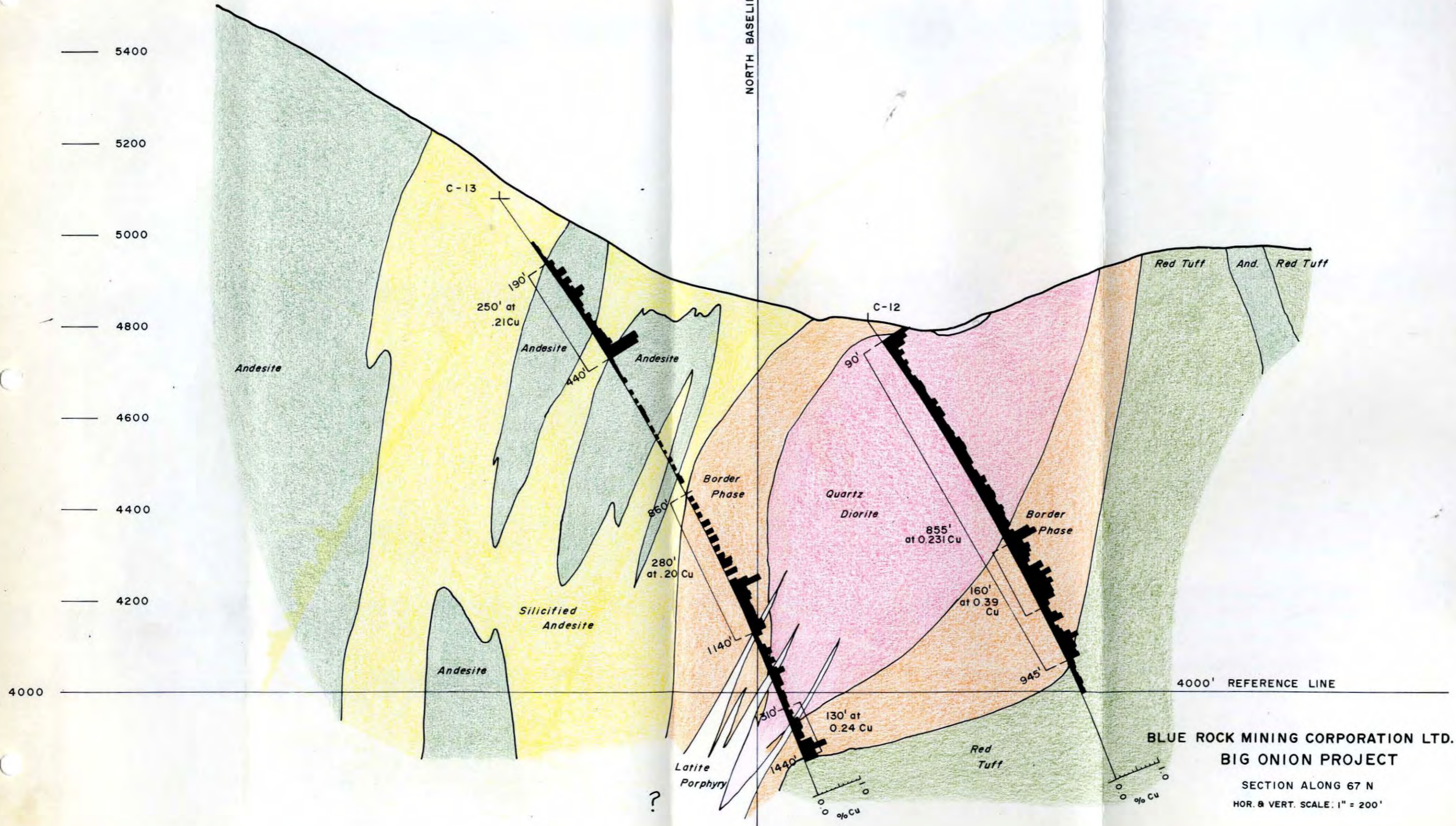
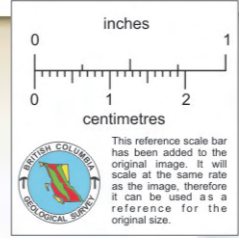
Andesite

Red Tuffs

Argillite

4000' REFERENCE LINE

BLUE ROCK MINING CORPORATION LTD.
BIG ONION PROJECT
SECTION ALONG 61 N
HOR. & VERT. SCALE : 1" = 200'



BLUE ROCK MINING CORPORATION LTD.
BIG ONION PROJECT

SECTION ALONG 67 N
HOR. & VERT. SCALE: 1" = 200'

Elev.

— 5600

— 5400

— 5200

— 5000

— 4800

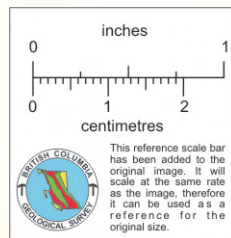
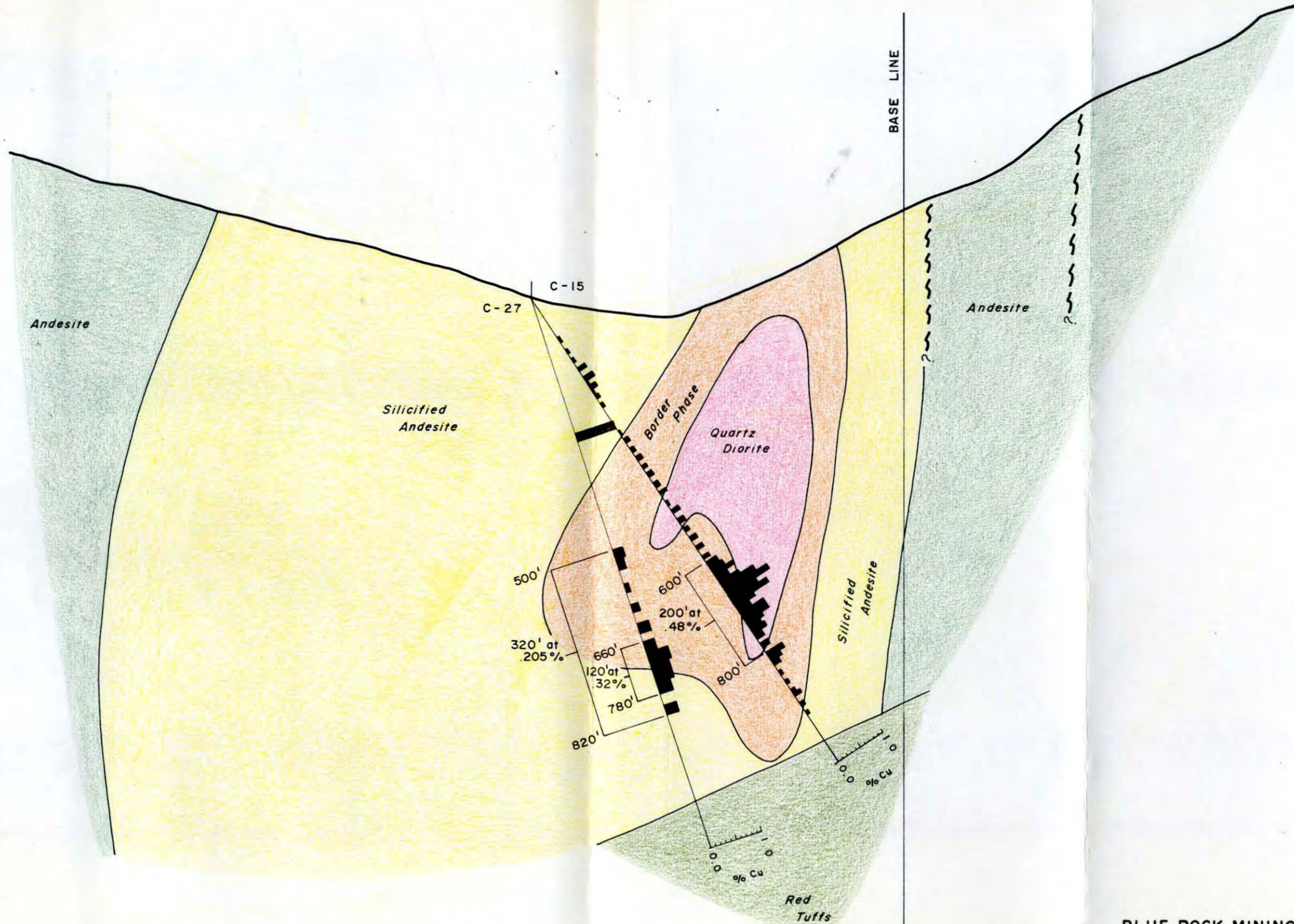
— 4600

— 4400

— 4200

— 4000

— 3800



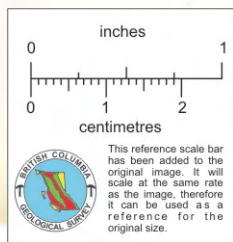
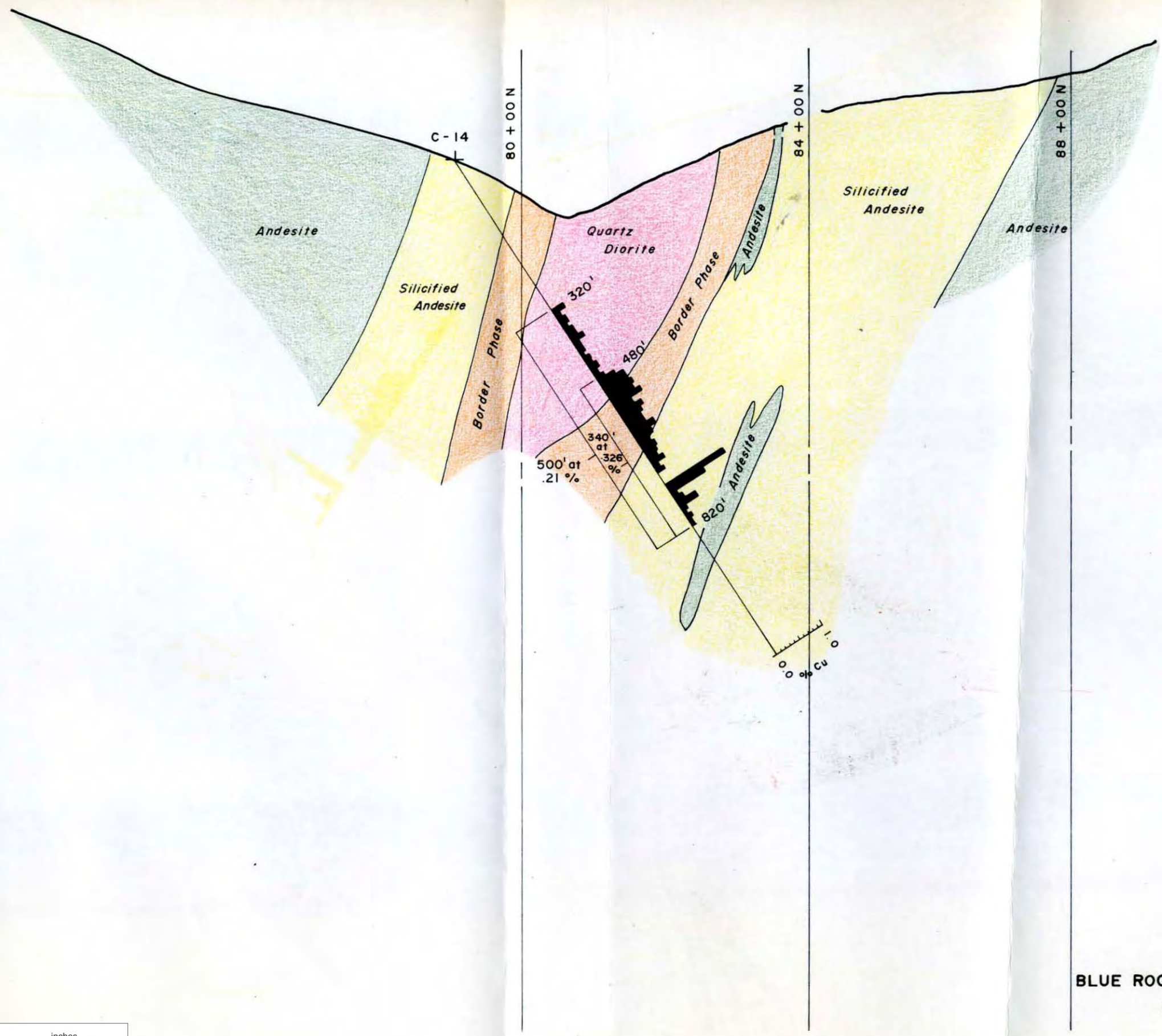
BLUE ROCK MINING CORPORATION LTD.

BIG ONION PROJECT

SECTION A - A'

HOR. & VERT. SCALE: 1" = 200'

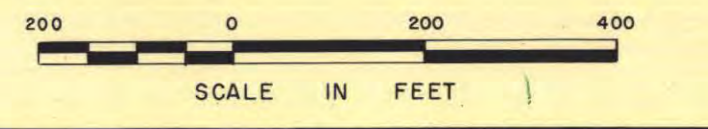
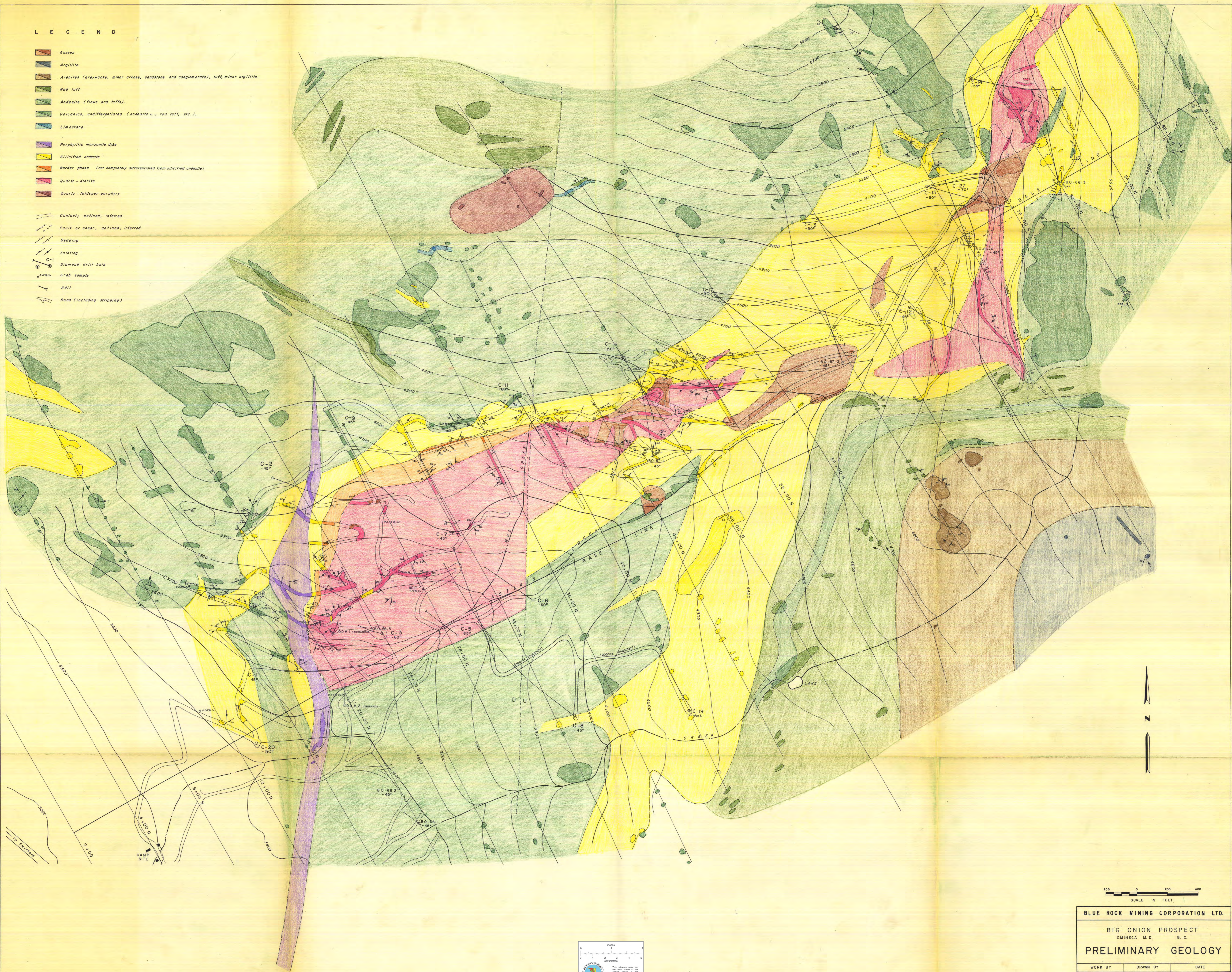
Elev.
 — 5600
 — 5400
 — 5200
 — 5000
 — 4800
 — 4600
 — 4400
 — 4200
 — 4000
 — 3800



BLUE ROCK MINING CORPORATION LTD.
 BIG ONION PROJECT
 SECTION B - B'
 HOR. & VERT. SCALE: 1" = 200'

LEGEND

-  Gossan.
-  Argillite
-  Arenites (greywacke, minor arkose, sandstone and conglomerate), tuff, minor argillite.
-  Red tuff
-  Andesite (flows and tuffs).
-  Volcanics, undifferentiated (andesites, red tuff, etc.).
-  Limestone.
-  Porphyritic monzonite dyke
-  Silicified andesite
-  Border phase (not completely differentiated from silicified andesite)
-  Quartz - diorite
-  Quartz - feldspar porphyry
-  Contact, defined, inferred
-  Fault or shear, defined, inferred
-  Bedding
-  Jointing
-  Diamond drill hole
-  Grab sample
-  Adit
-  Road (including stripping)



BLUE ROCK MINING CORPORATION LTD.

BIG ONION PROSPECT
OMINECA M.D. B. C.
PRELIMINARY GEOLOGY

WORK BY	DRAWN BY	DATE
A. L'Orso 1966 C. C. McFall 1970	C. L. C.	REVISED JAN. 21, 1972

