



DETAIL LOGS.
GAMMA RAY. L.S.D.
H.R.D.

COMPANY CYPRUS ANVIL.

BOREHOLE # T - 77 - 7. Logged thru drill stem.

STATE British Columbia. COUNTRY Canada.

Permanent Datum Ground level Elev 4100 Ft.

Log measured from Ground level zero Ft. above P.D.

Drilling measured from Ground level zero Ft. above P.D.

Run No.	Depth Scale	1	2' : 1"
Date	21st. Aug 1977		
First Reading	414'		
Last Reading	145'		
Interval Measured	204'		
Casing BPB			
Casing Driller			
Depth Reached	414.8'		
Bottom Driller	416'		
Mud Nature	Natural		
S.G.	Viscosity		
Bit Size	1	4 3/4" to 91'	to
	2	3 7/8" to T.D.	to
	3	to	to
Casing Size	1	to	to
	2	to	to
Rm @ Meas Temp.	@	@	@
Rmf @ Meas Temp.	@	@	@
Rmc @ Meas Temp.	@	@	@
BHT			
Operating Time	3hrs.		
Truck No.	27 / 4		
Recorded By	A. Anthony		
Witness			

fold here

REMARKS

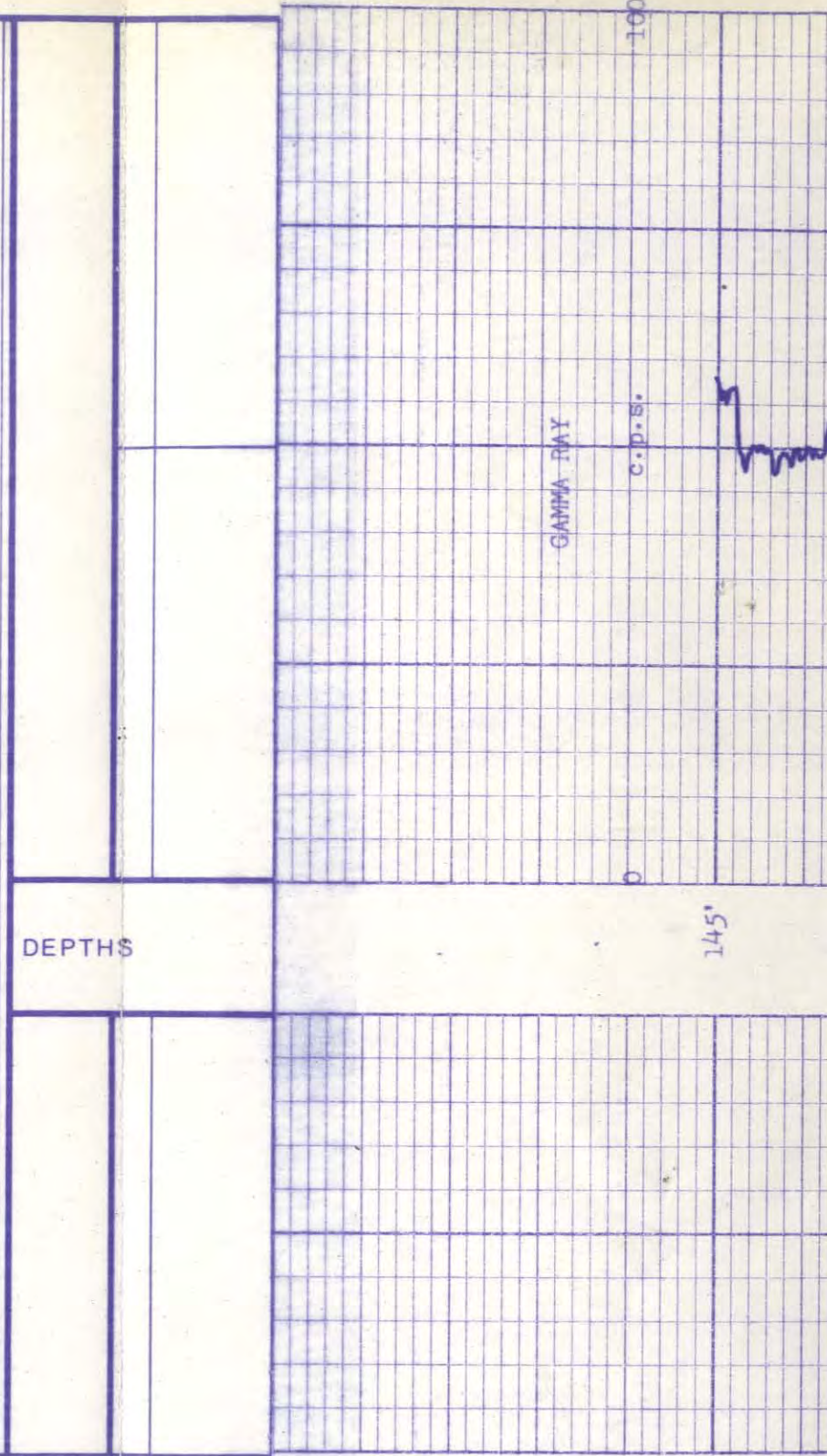
Changes in Mud Type or Additional Samples

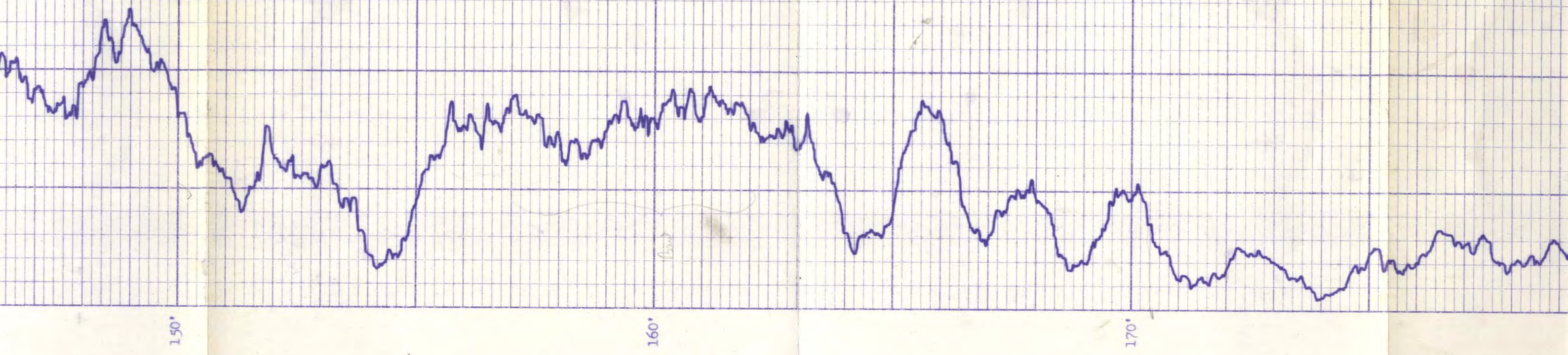
Date	Sample No.	Depth - Driller	Type Fluid in Hole	Dens.	Visc.	ph.	Fluid Loss ml	Source of Sample		
								Rm @ Meas Temp.	Rmf @ Meas Temp.	Rmc @ Meas Temp.
								@	@	@
								@	@	@
								@	@	@
								@	@	@
								@	@	@
								@	@	@
								@	@	@
								@	@	@

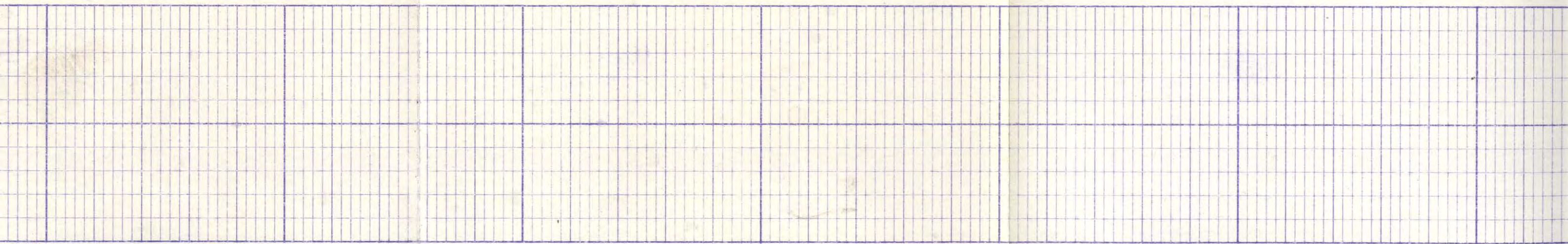
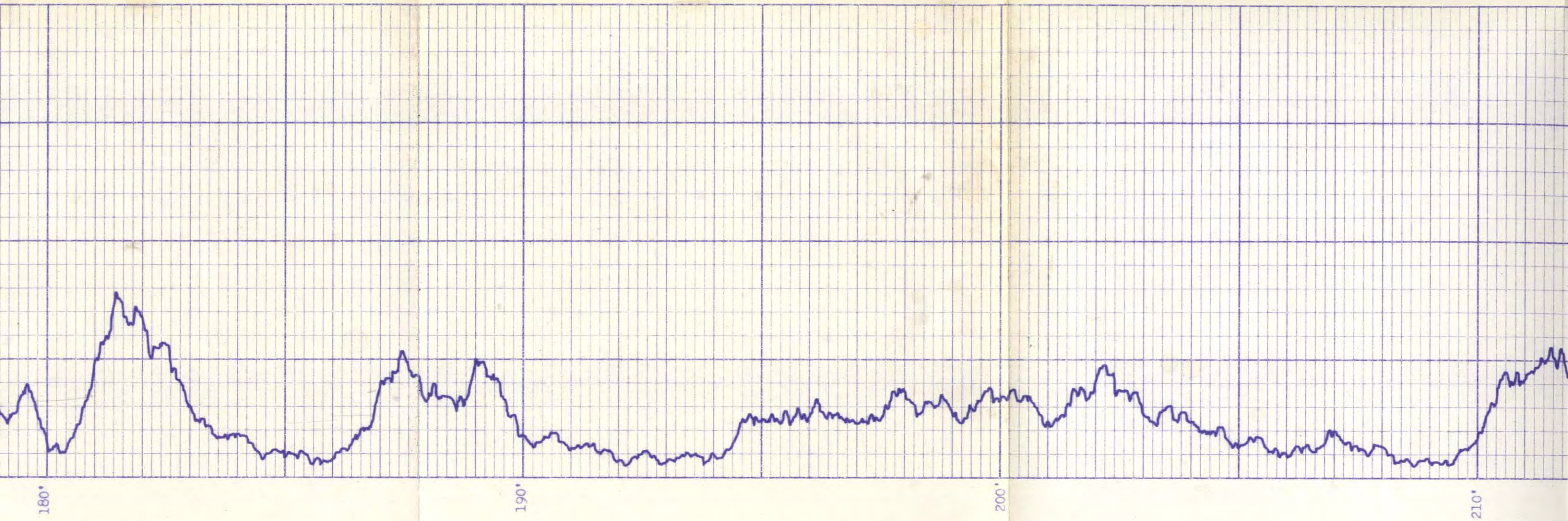
Log	Depths		Speed Ft/min	T.C. Sec	Norm.	Sonde No.	Source Number
	From	To					
Gamma	414'	365'	7.5	2	Out	B	--
"	295'	145'	"	"	"	"	--
H.R.D.	413'	365'	"	1	"	90	C - 2
"	295'	145'	"	"	"	"	"
L.S.D.	413'	365'	"	"	"	"	C - 50
"	295'	145'	"	"	"	"	"

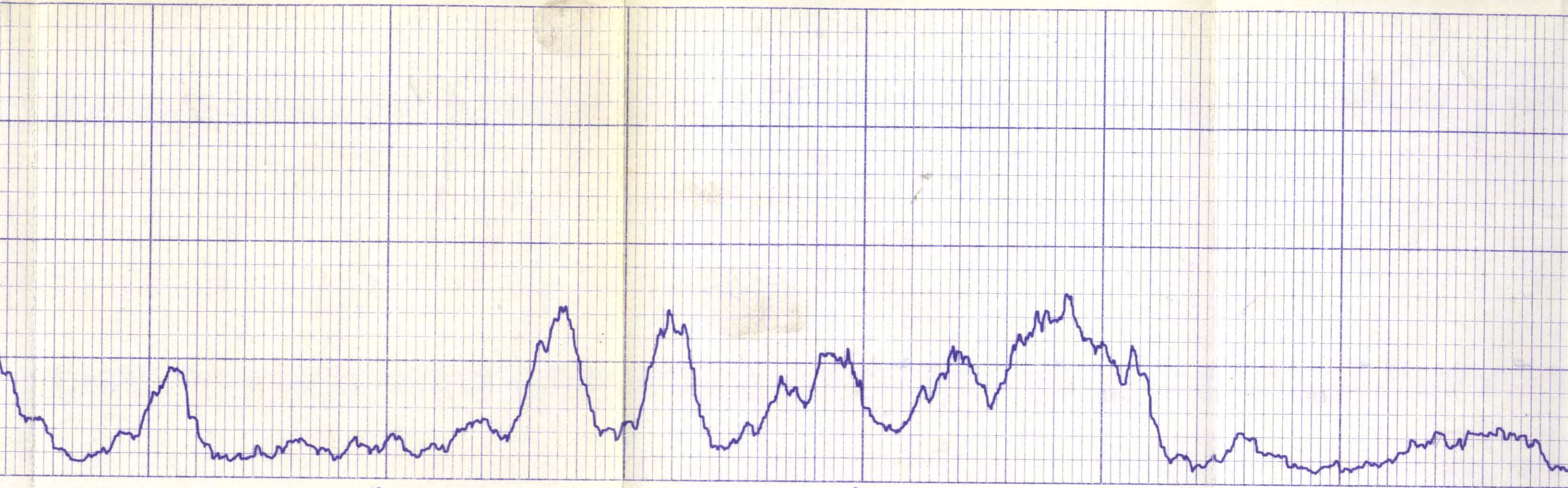
Logged thru drill stem therefore no Caliper log.

DEPTHS





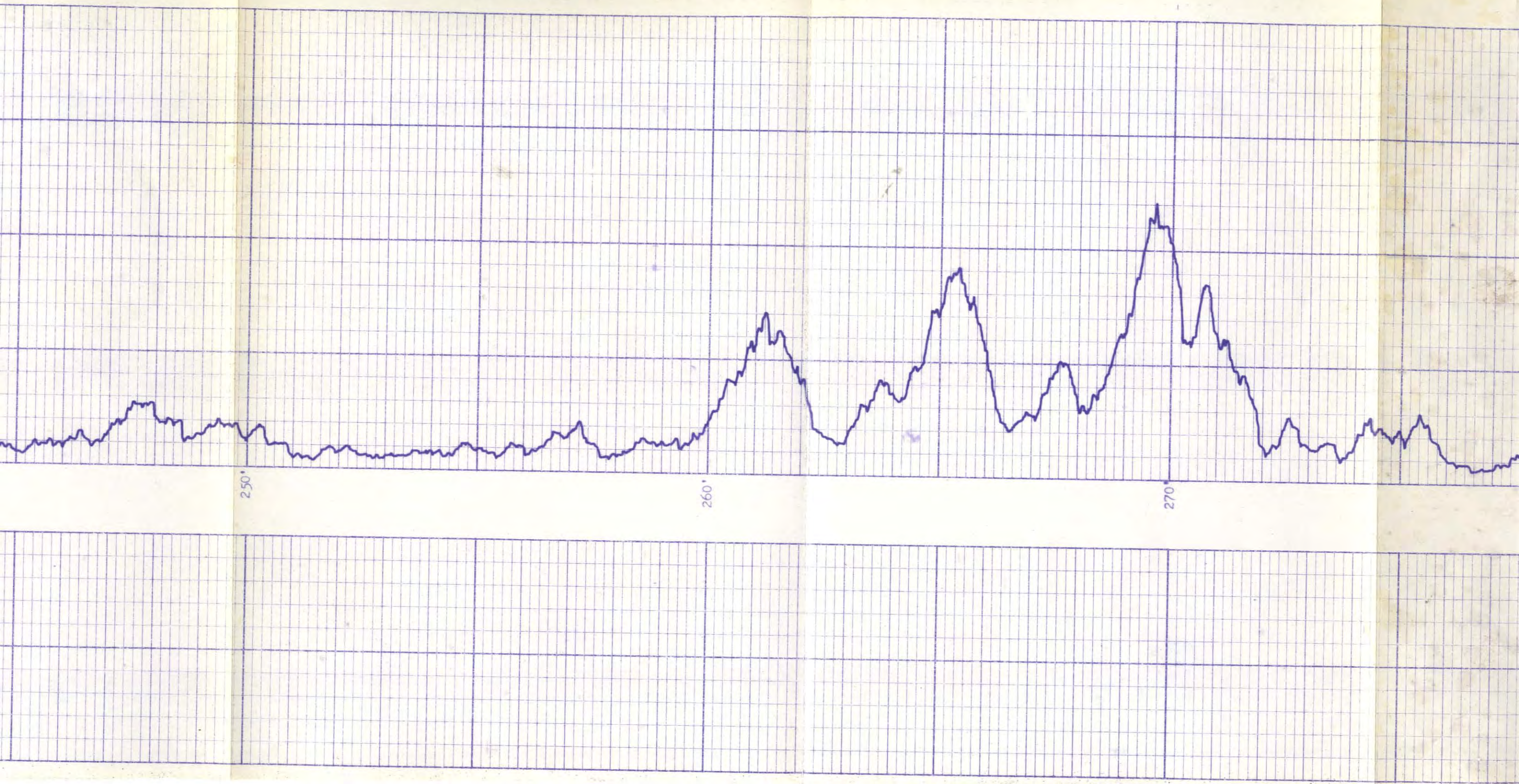


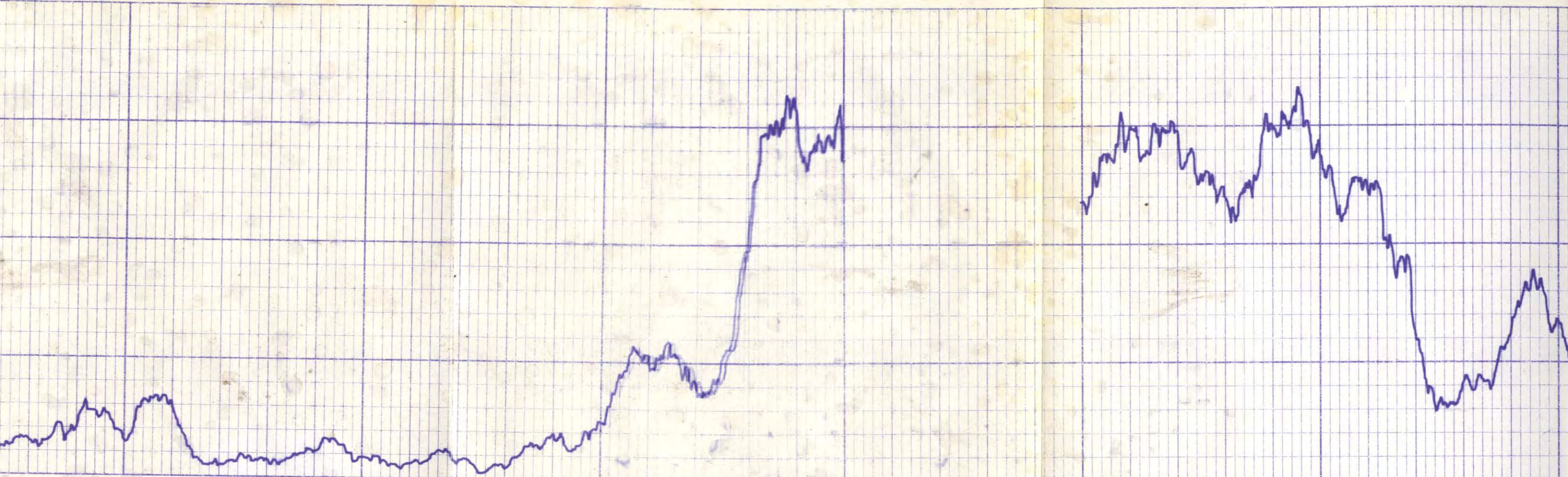


220'

230'

240'





280'

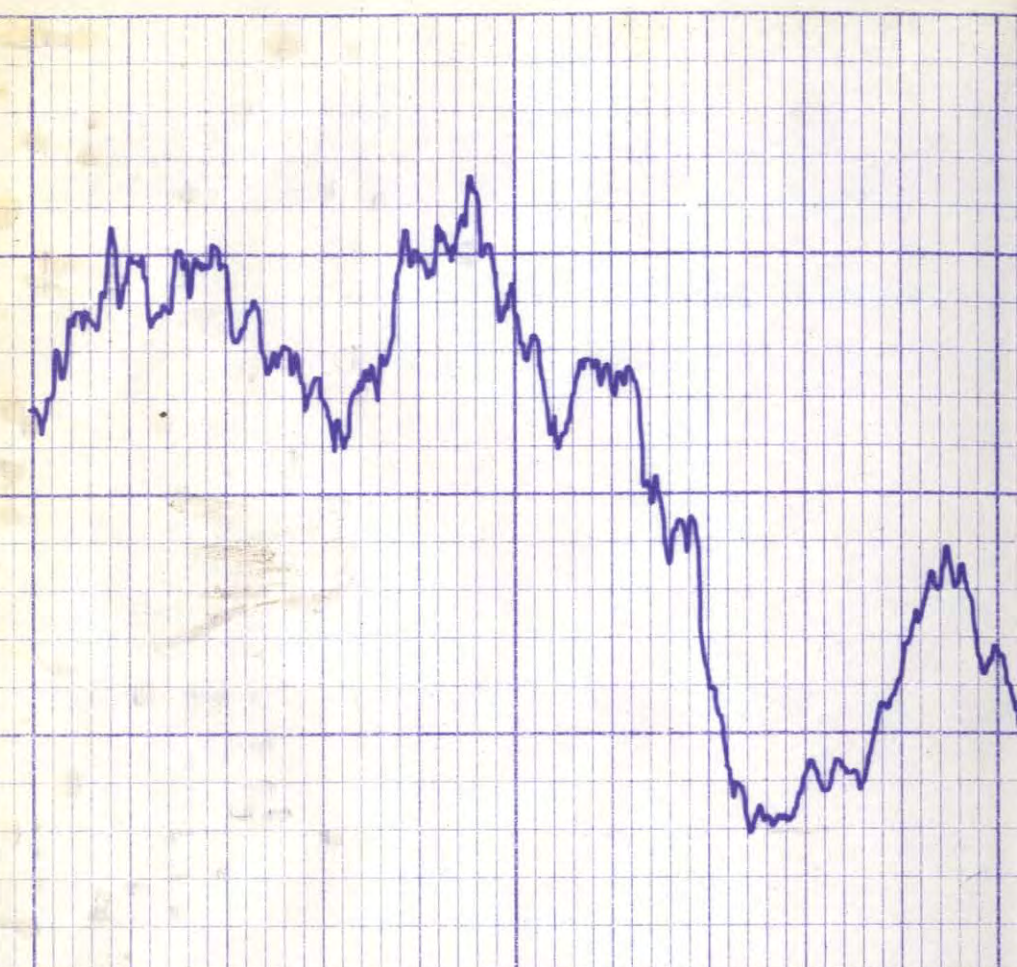
290'

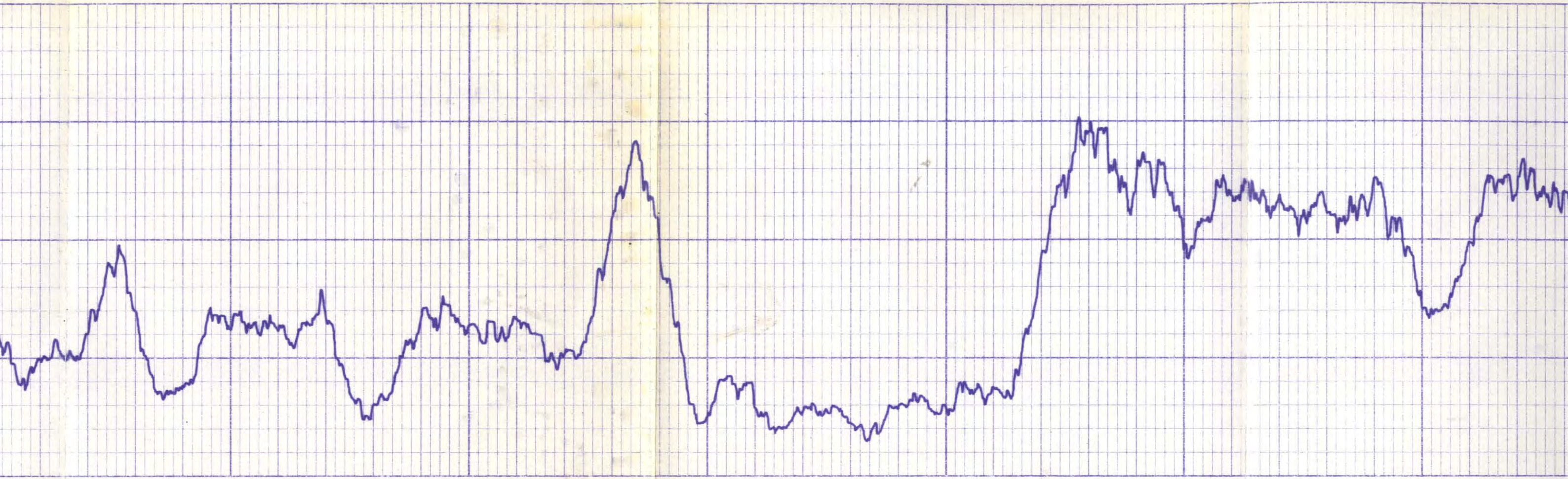
295'

305'

365'

370'

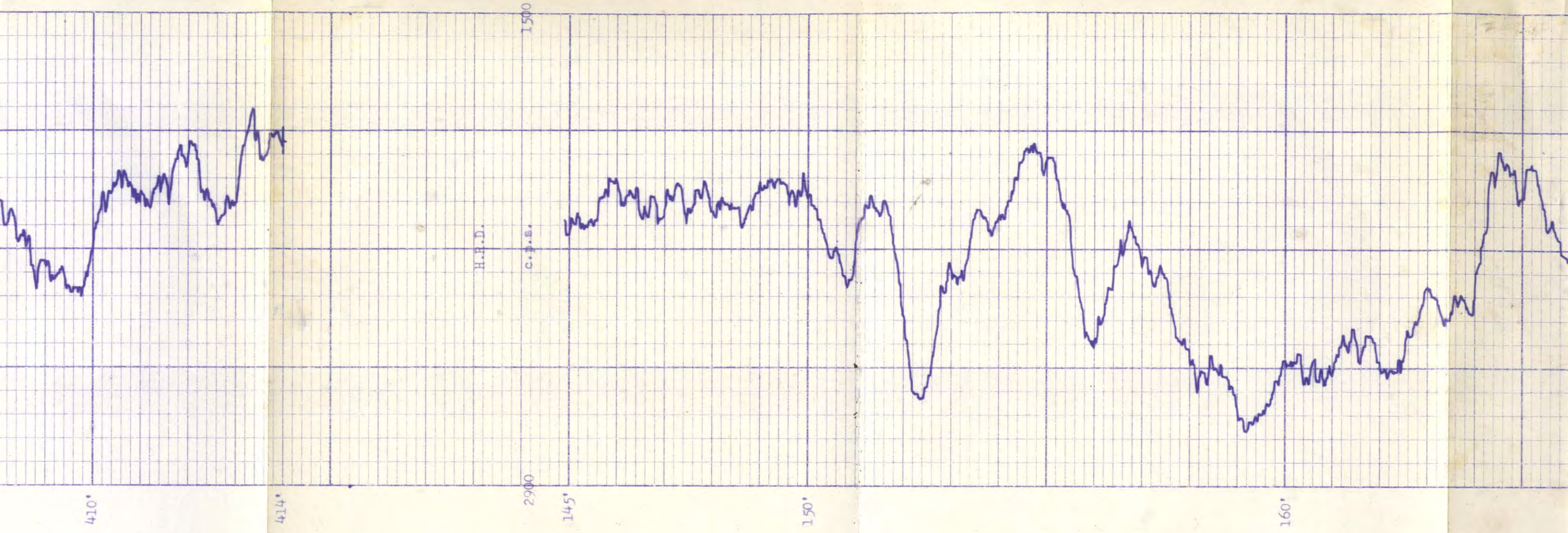


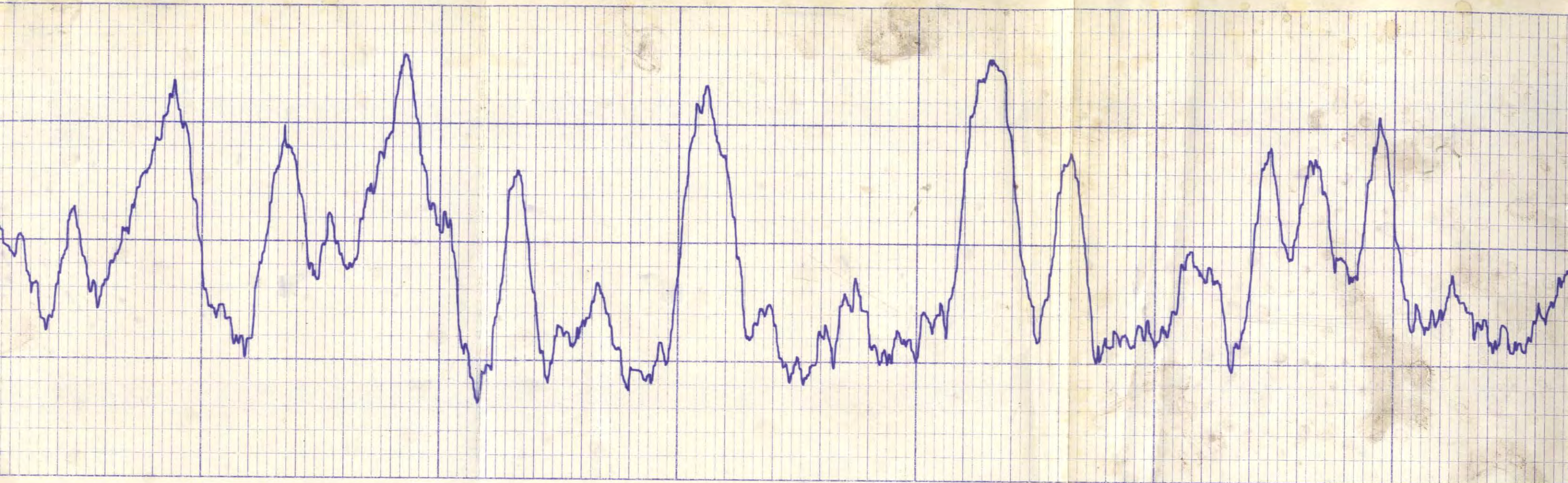


380

390

400

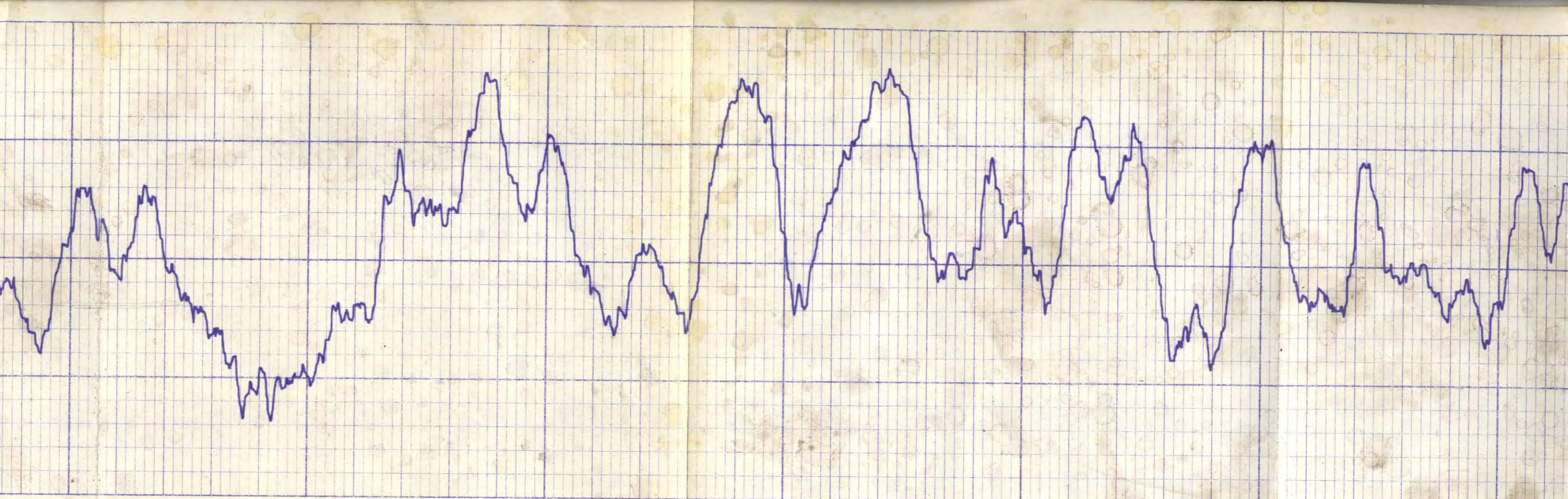




170'

180'

190'

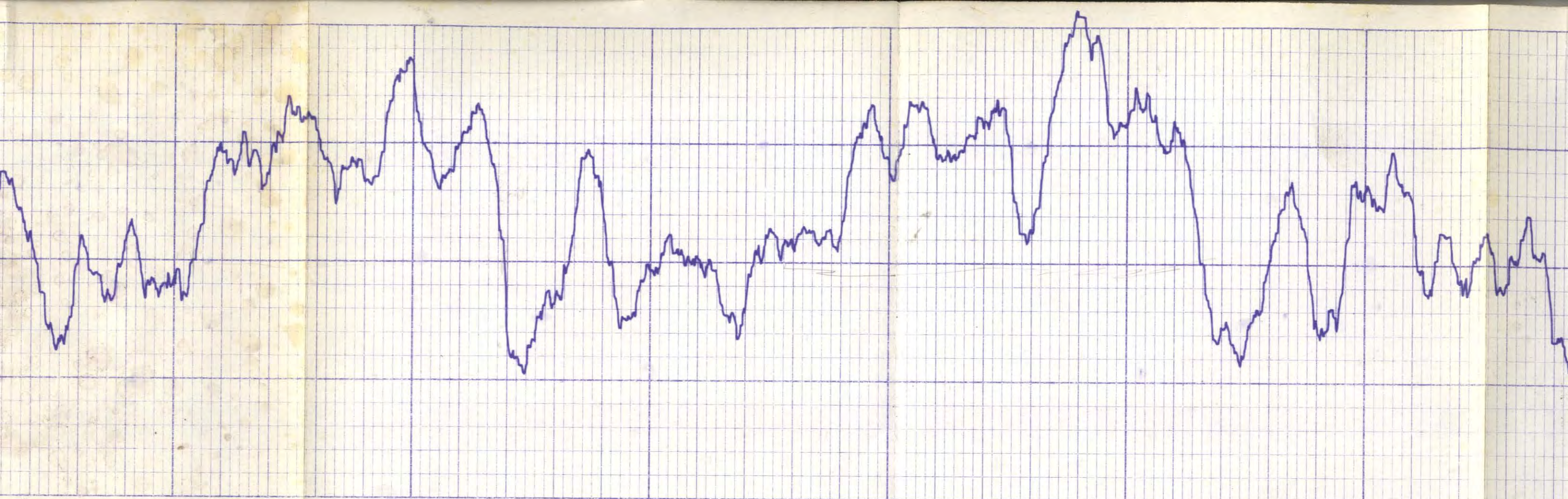


200

210

220

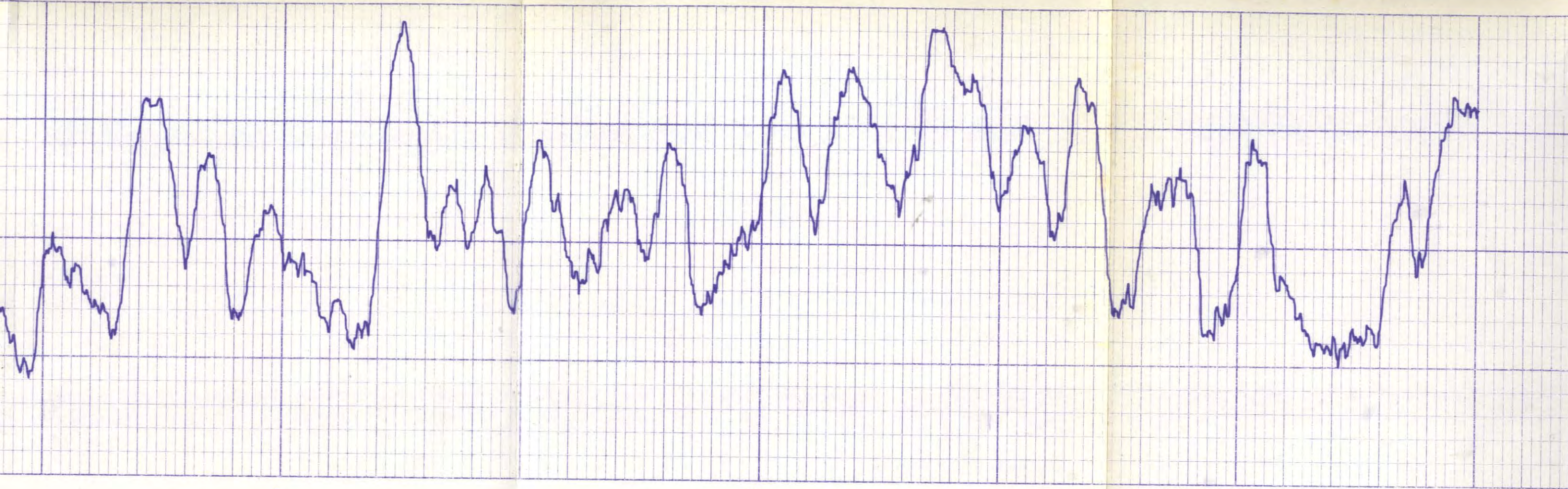
230



240°

250°

260°



270

280

290

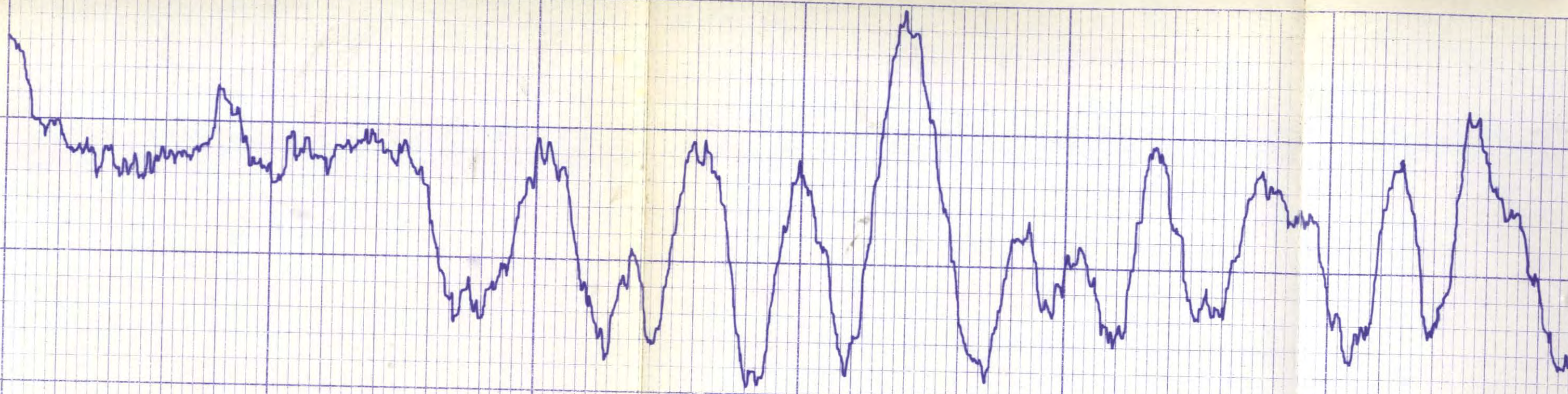
295

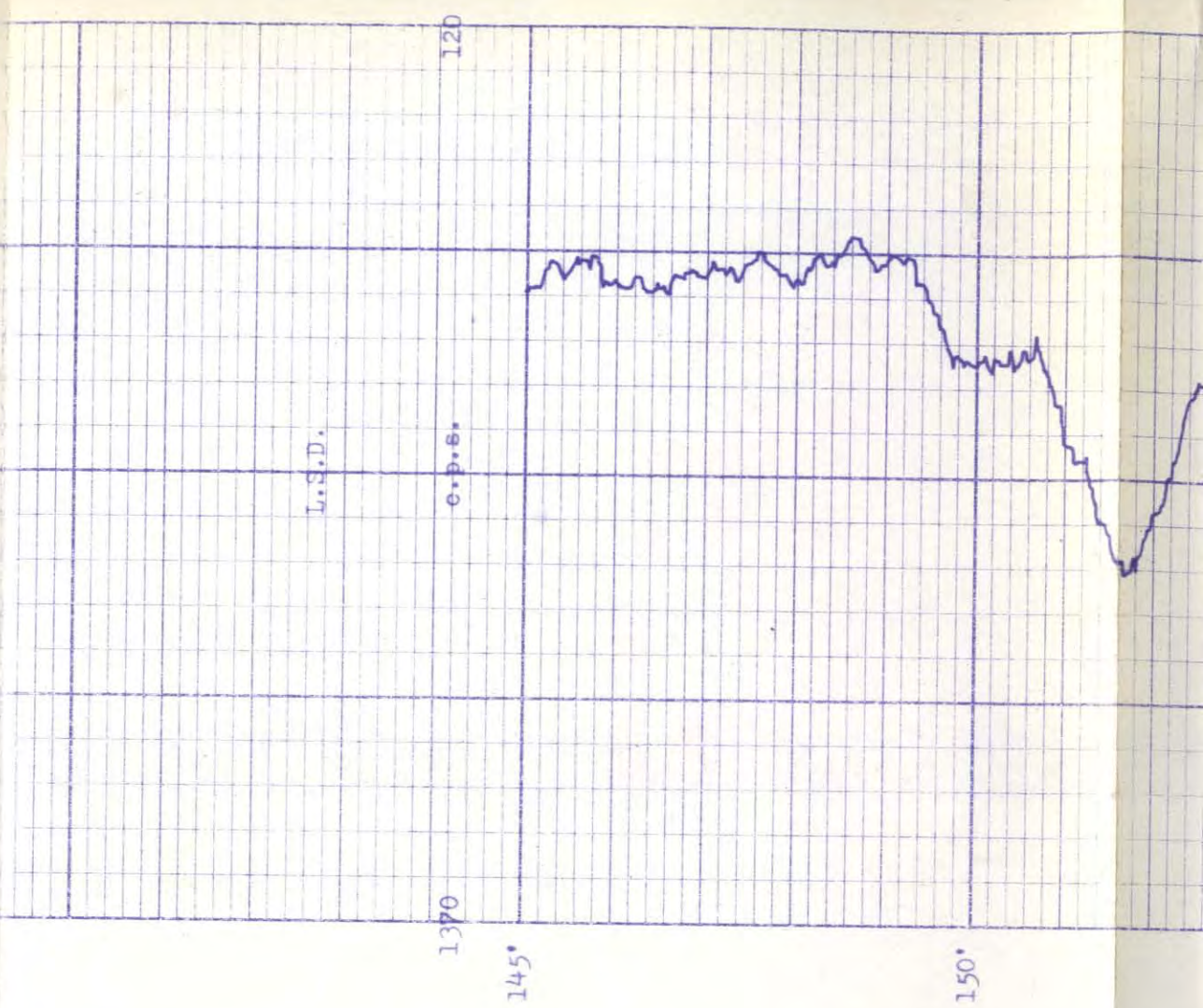
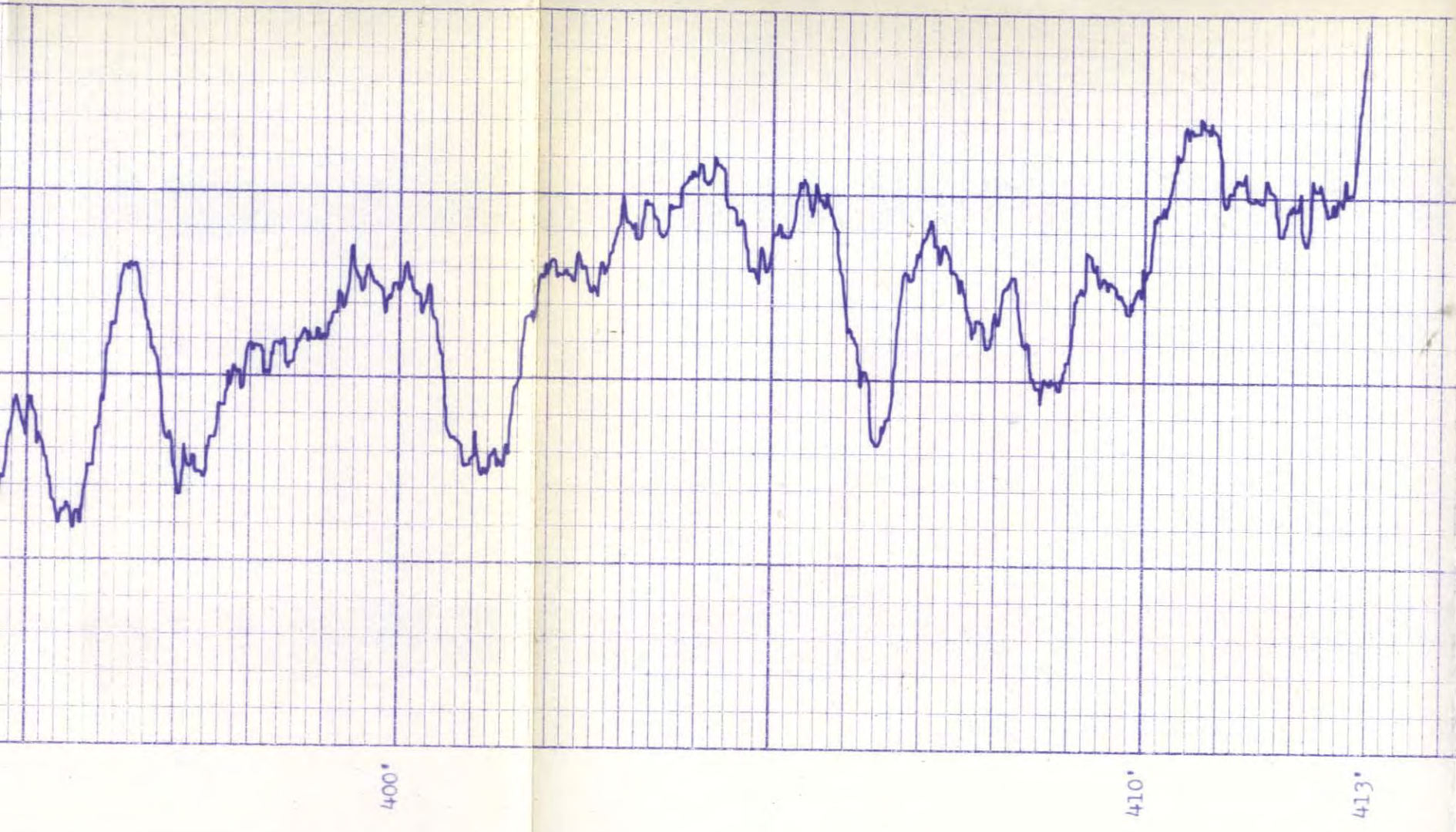
365'

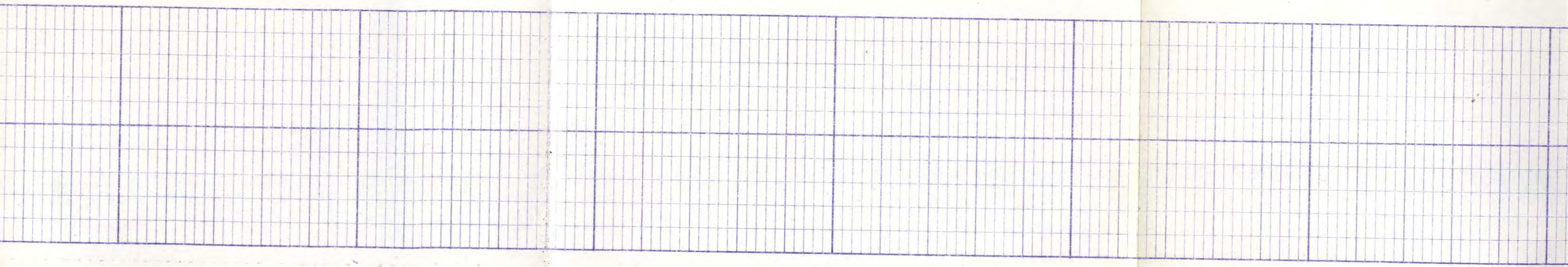
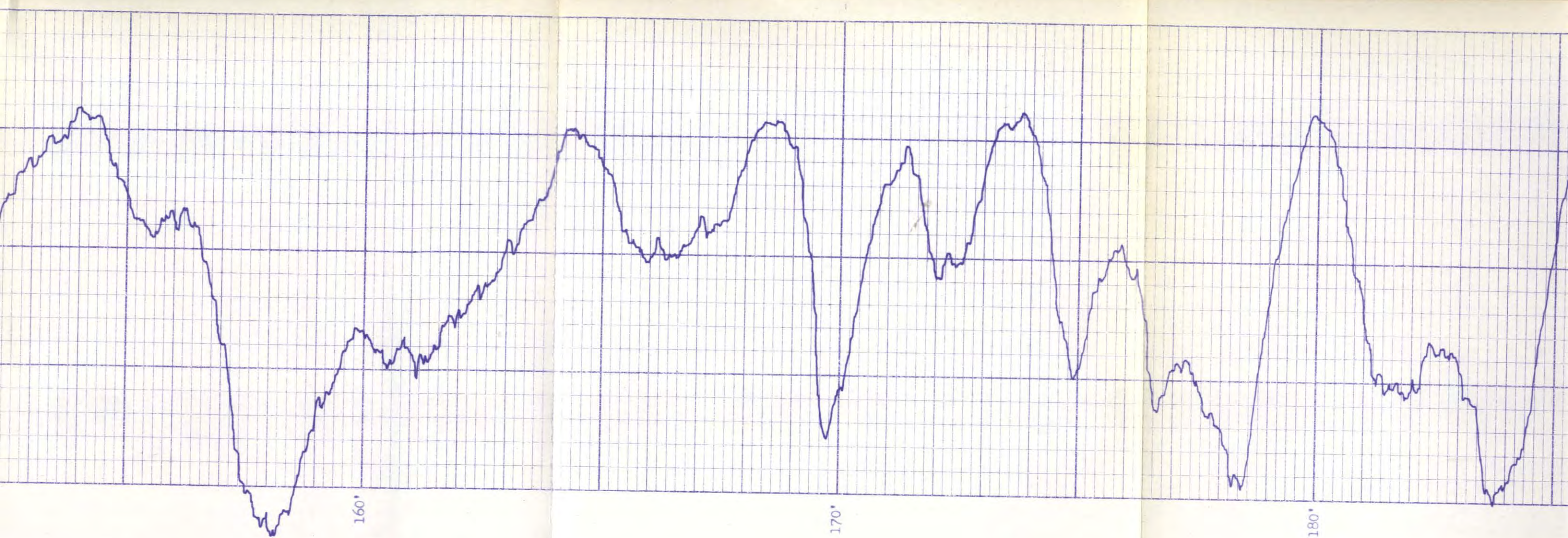
370'

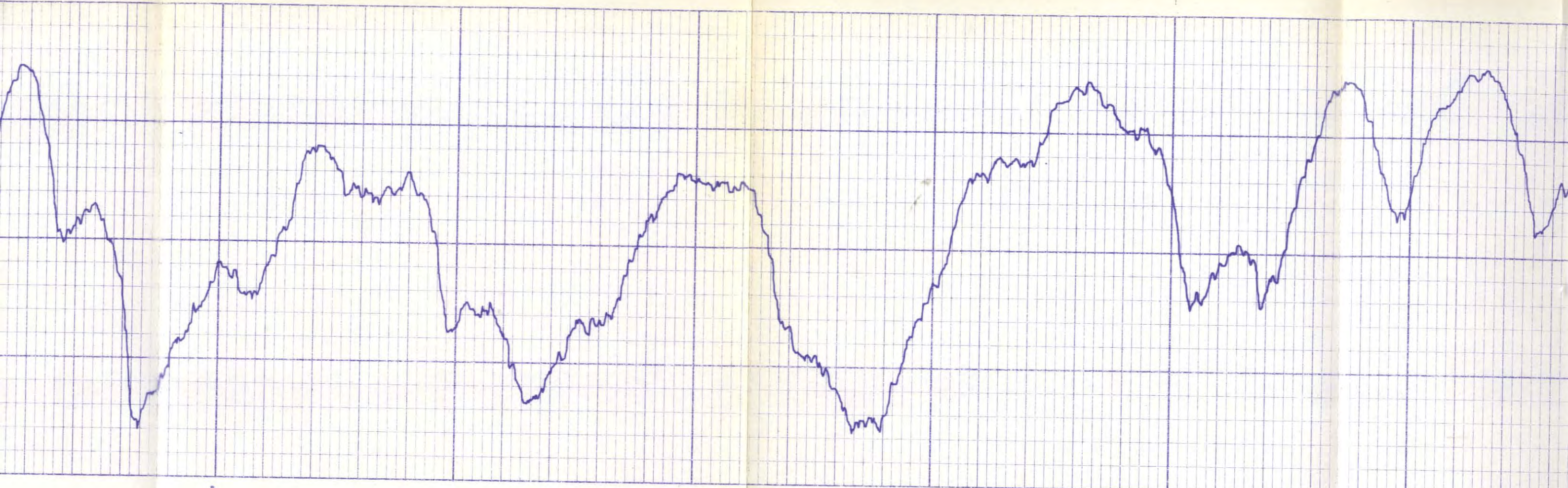
380'

390'





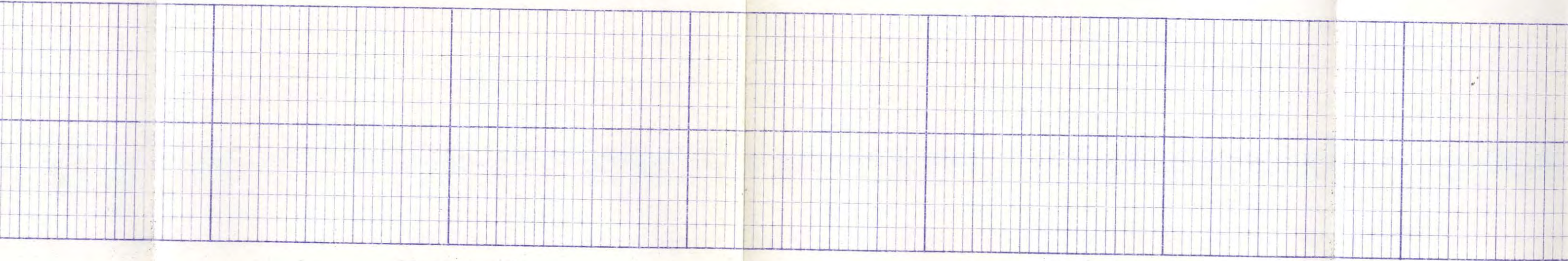


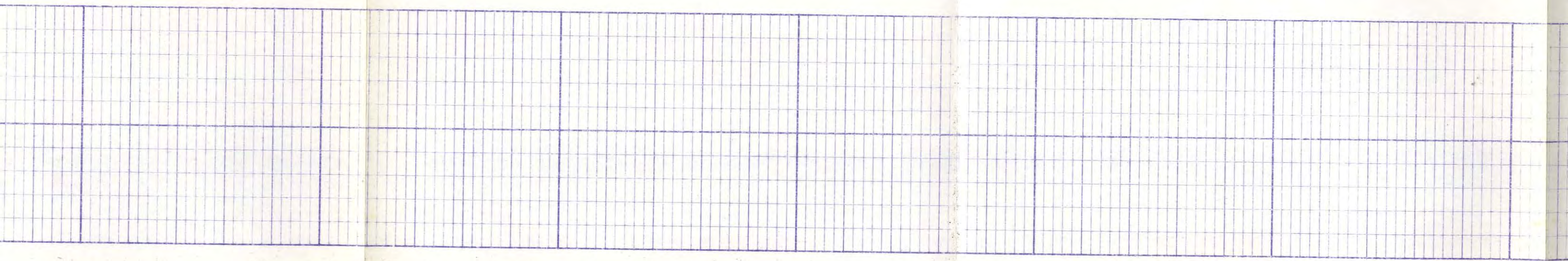
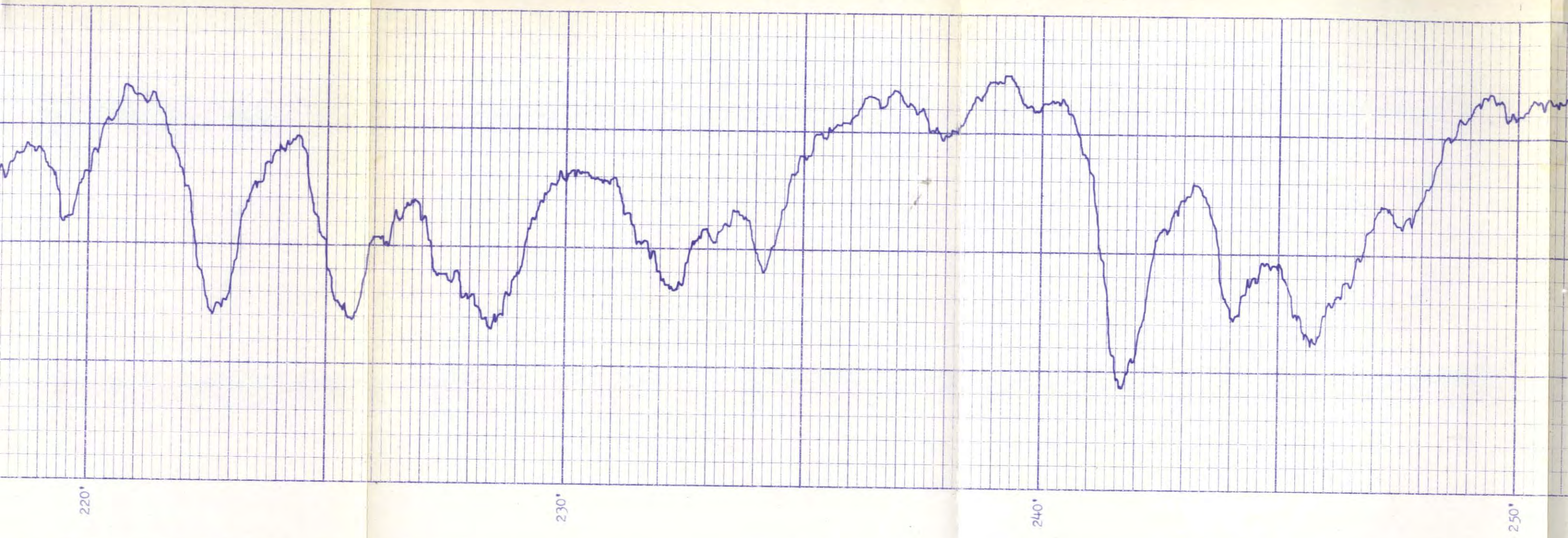


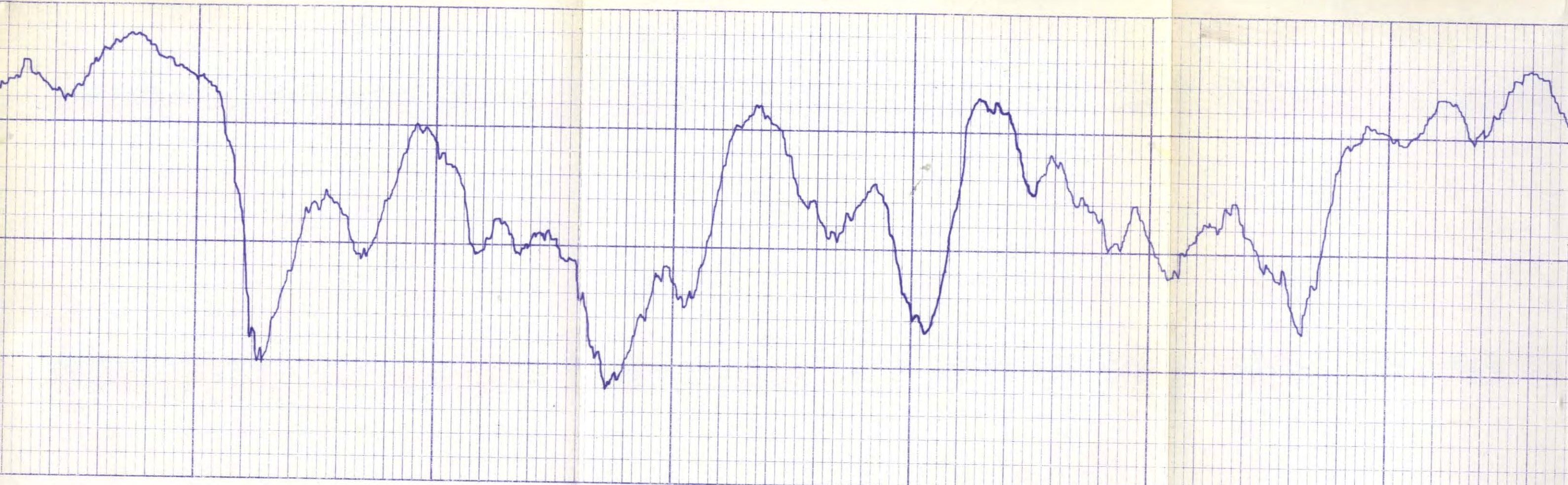
190'

200'

210'



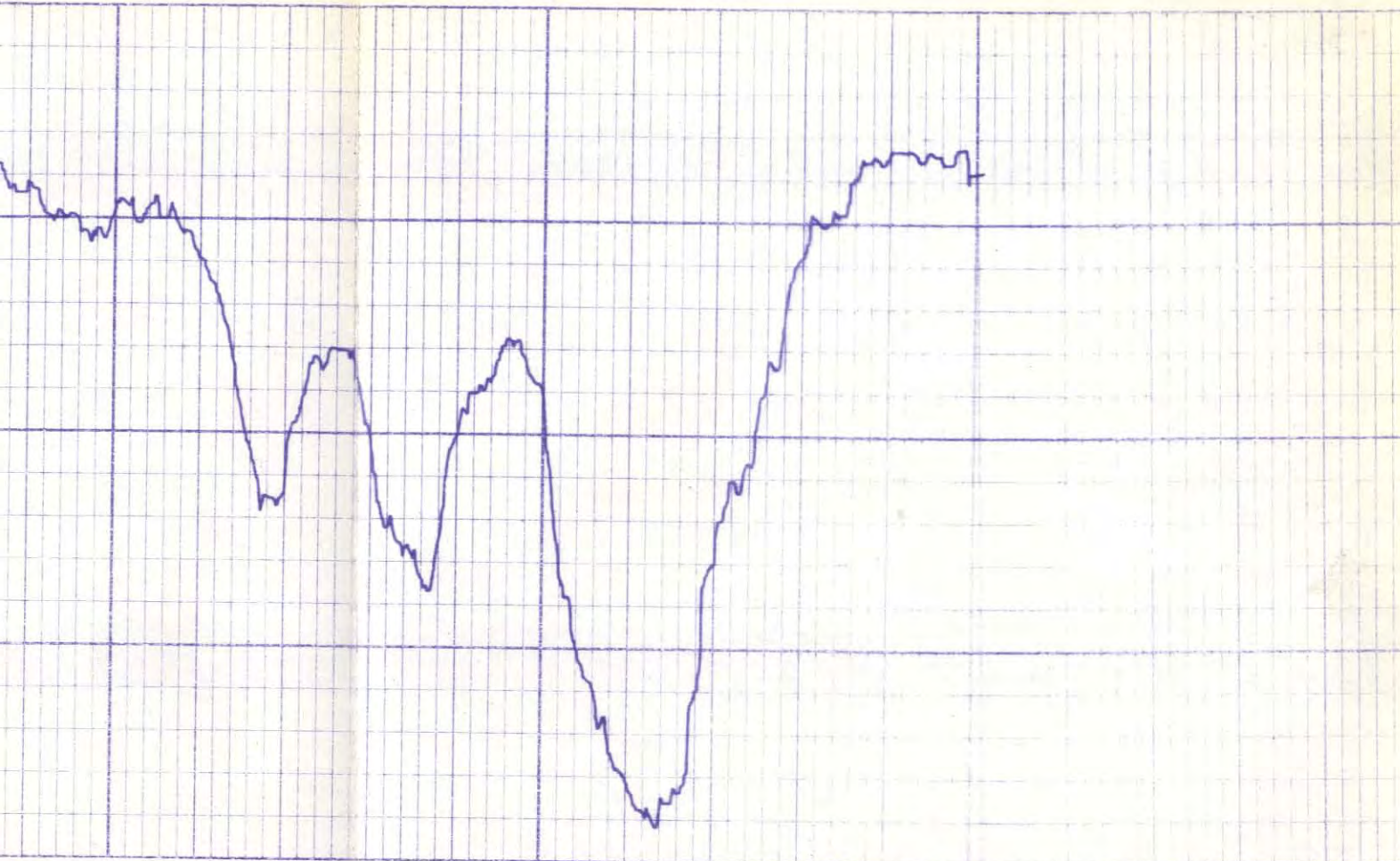




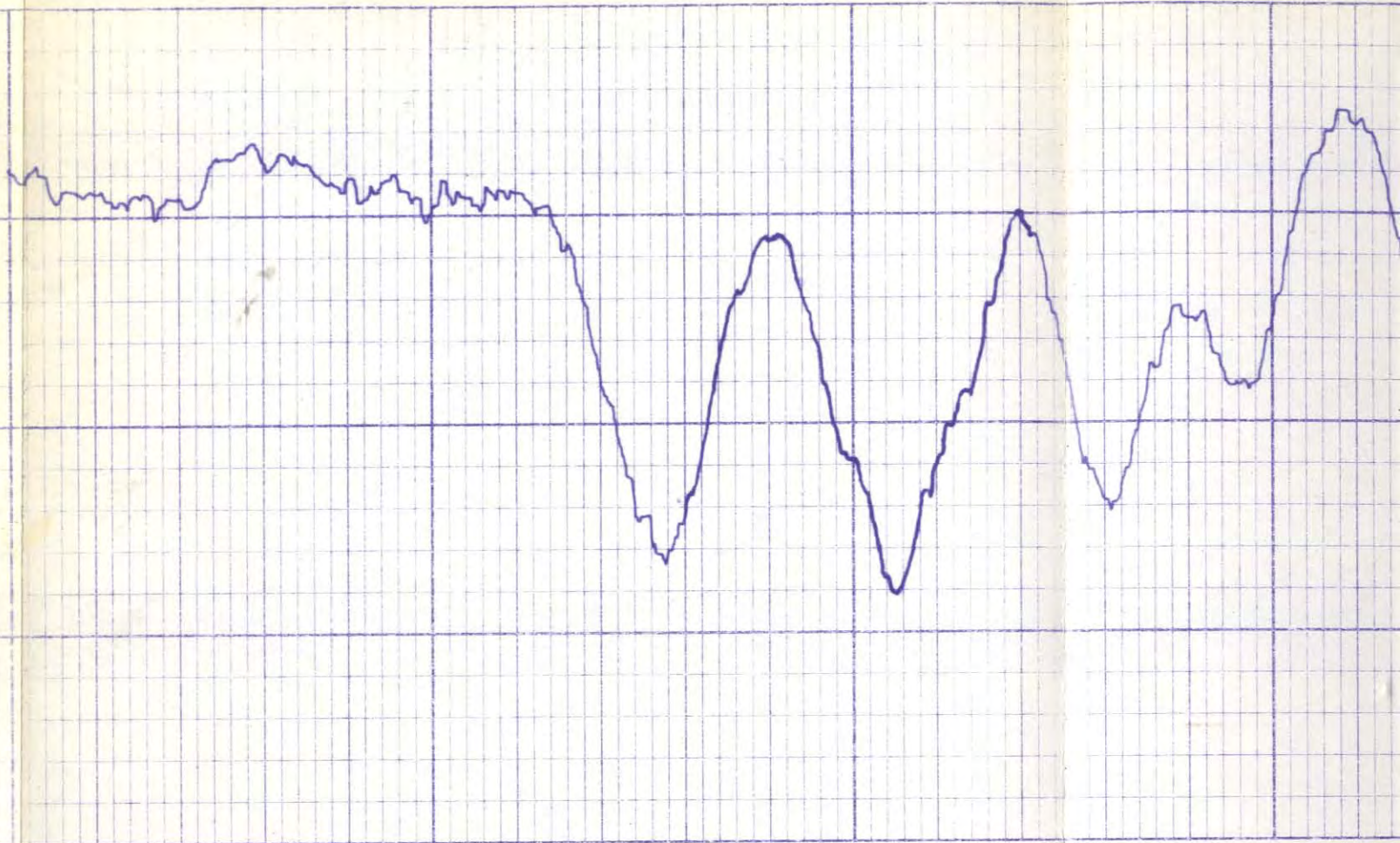
260'

270'

280'

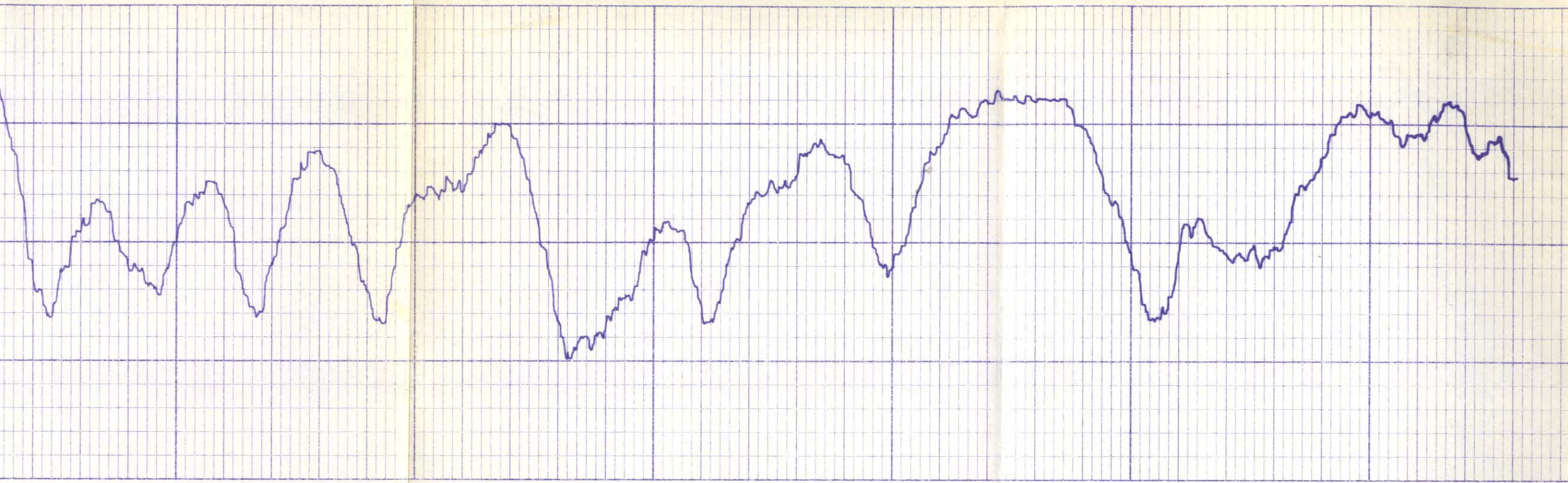


290°



370°

380°



390'

400'

410'

420'