



DETAIL LOGS.
GAMMA RAY. L.S.D.
H.R.D.

COMPANY CYPRUS ANVIL
BOREHOLE # T - 77 - 6 Logged thru drill stem.
STATE British Columbia. COUNTRY Canada.
Permanent Datum Ground level Elev 4100 Ft.
Log measured from Ground level zero Ft. above P.D.
Drilling measured from Ground level zero Ft. above P.D.

Run No.	Depth Scale	1	2' : 1"
Date	14th Aug 1977		
First Reading	350'		
Last Reading	155'		
Interval Measured	110'		
Casing BPB			
Casing Driller			
Depth Reached	351.4'		
Bottom Driller	352'		
Mud Nature	Natural		
S.G.	Viscosity		
Bit Size 1	4 3/4"	to	81'
2	3 7/8"	to	T.D.
3		to	
Casing Size 1		to	
2		to	
Rm @ Meas Temp.	@	@	@
Rmf @ Meas Temp.	@	@	@
Rmc @ Meas Temp.	@	@	@
BHT			
Operating Time	2hrs.		
Truck No.	27 / 4		
Recorded By	A. Anthony		
Witness			

fold here

REMARKS

Changes in Mud Type or Additional Samples

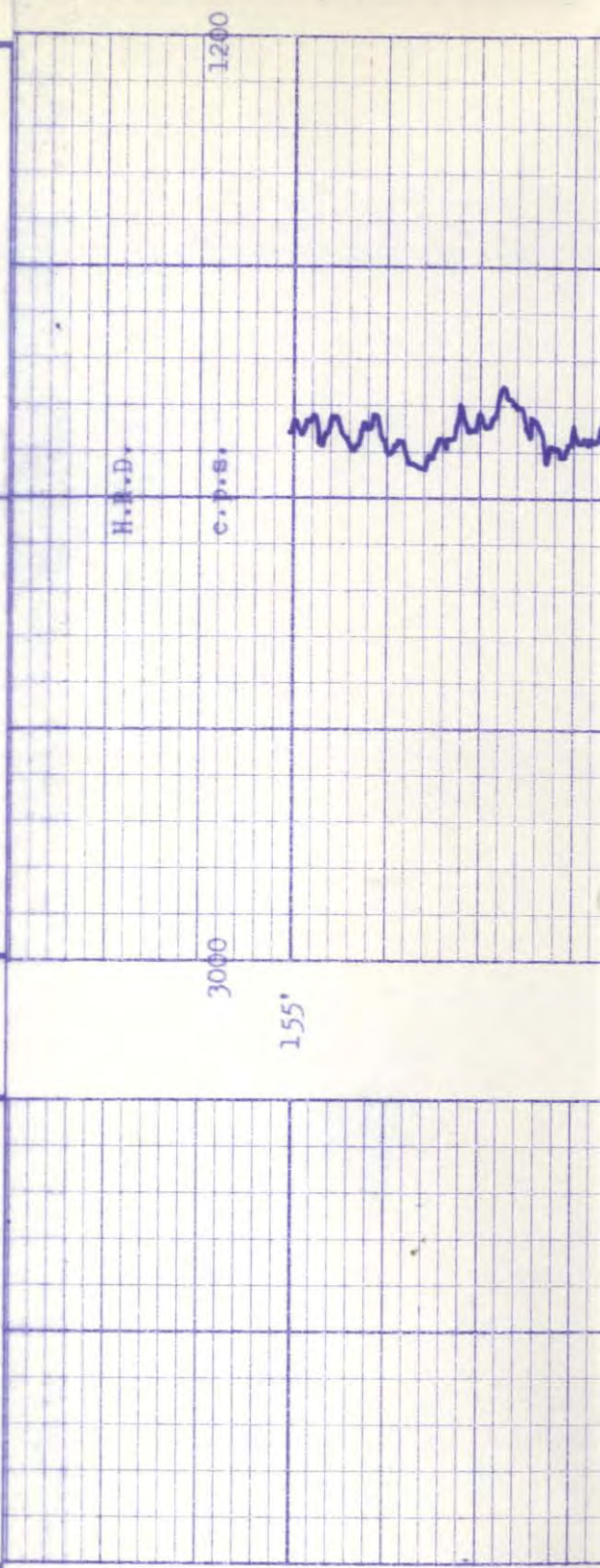
Date	Sample No.	
Depth - Driller		
Type Fluid in Hole		
Dens.	Visc.	
ph.	Fluid Loss	ml
Source of Sample		
Rm @ Meas Temp.	@	°F
Rmf @ Meas Temp.	@	°F
Rmc @ Meas Temp.	@	°F
Source: Rmf		Rmc
Rm @ BHT	@	°F
Rmf @ BHT	@	°F
Rmc @ BHT	@	°F

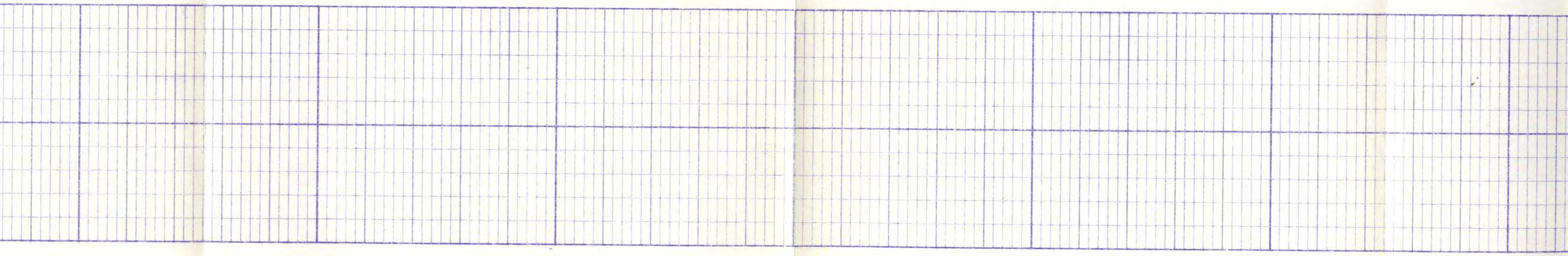
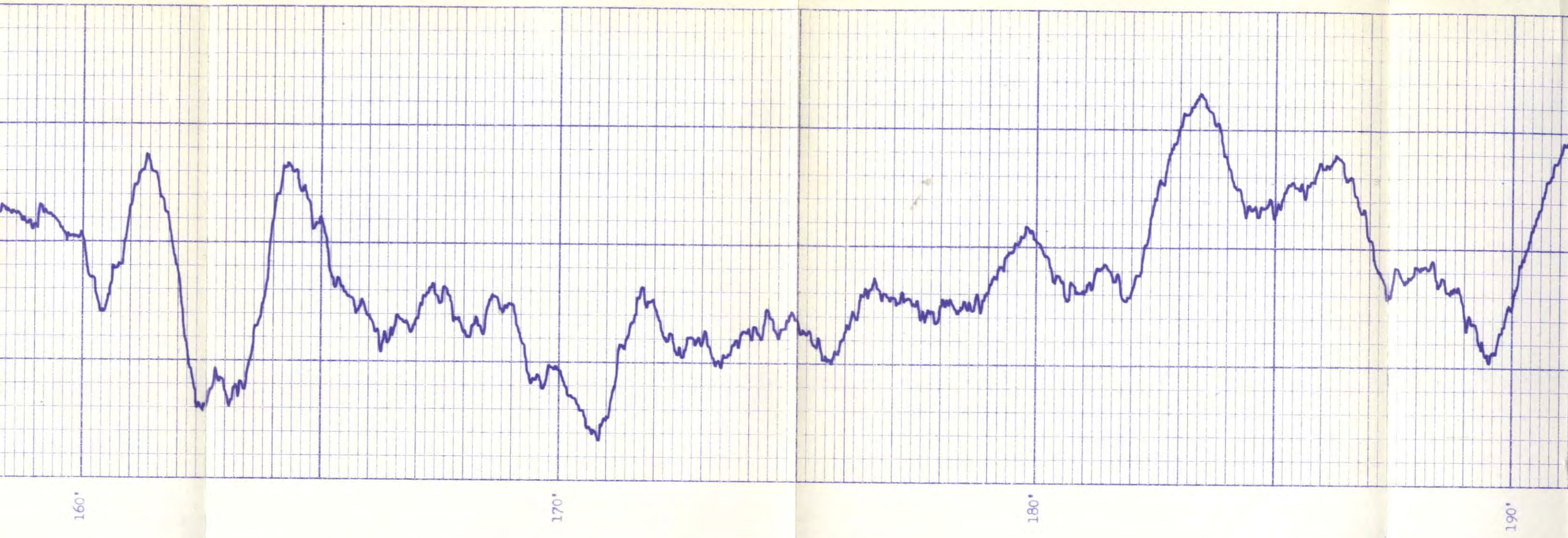
Type Log	Scale Changes		Equipment Data
	Depth	Scale Up Hole	
Run No.	Tool Type	Tool Position	Other

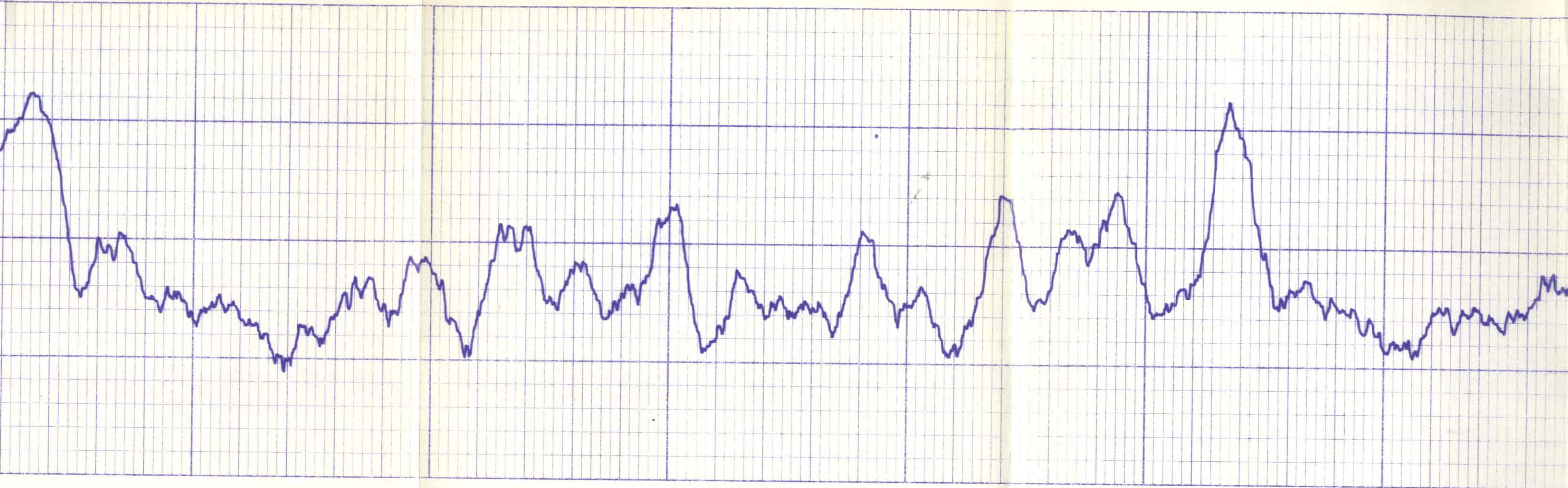
Log	Logging Data		Speed	T.C.	Norm.	Sonde No.	Source Number
	From	To					
L.S.D.	350'	315'	7.5	1	Out	90	C - 50
"	230'	155'	"	"	"	"	"
H.R.D.	350'	315'	"	"	"	"	C - 2
"	230'	155'	"	"	"	"	"
Gamma	350'	315'	"	2	"	8	-----
"	230'	155'	"	"	"	"	-----

No Caliper logs because logged thru stem.

DEPTHS



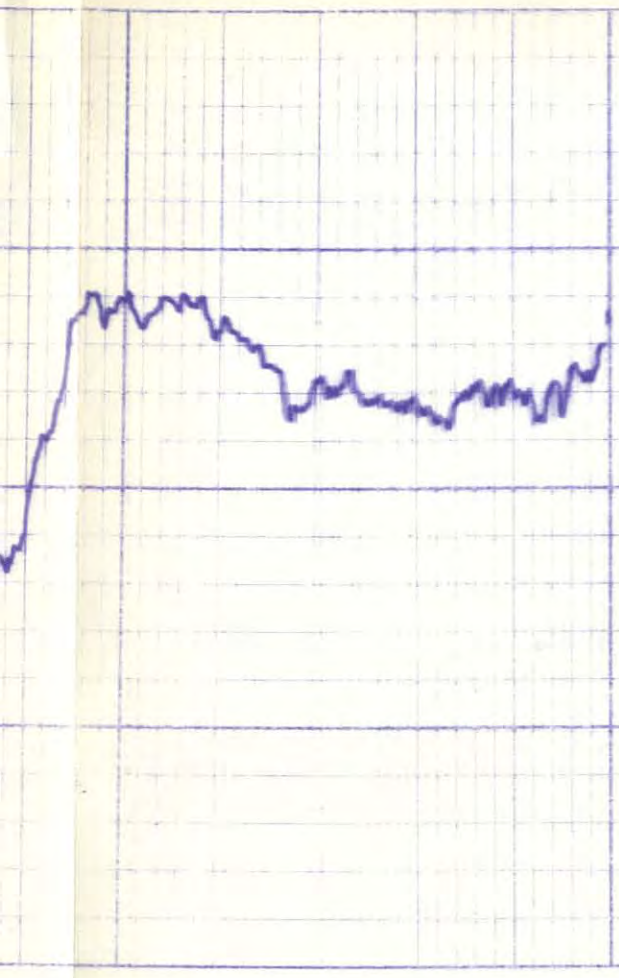




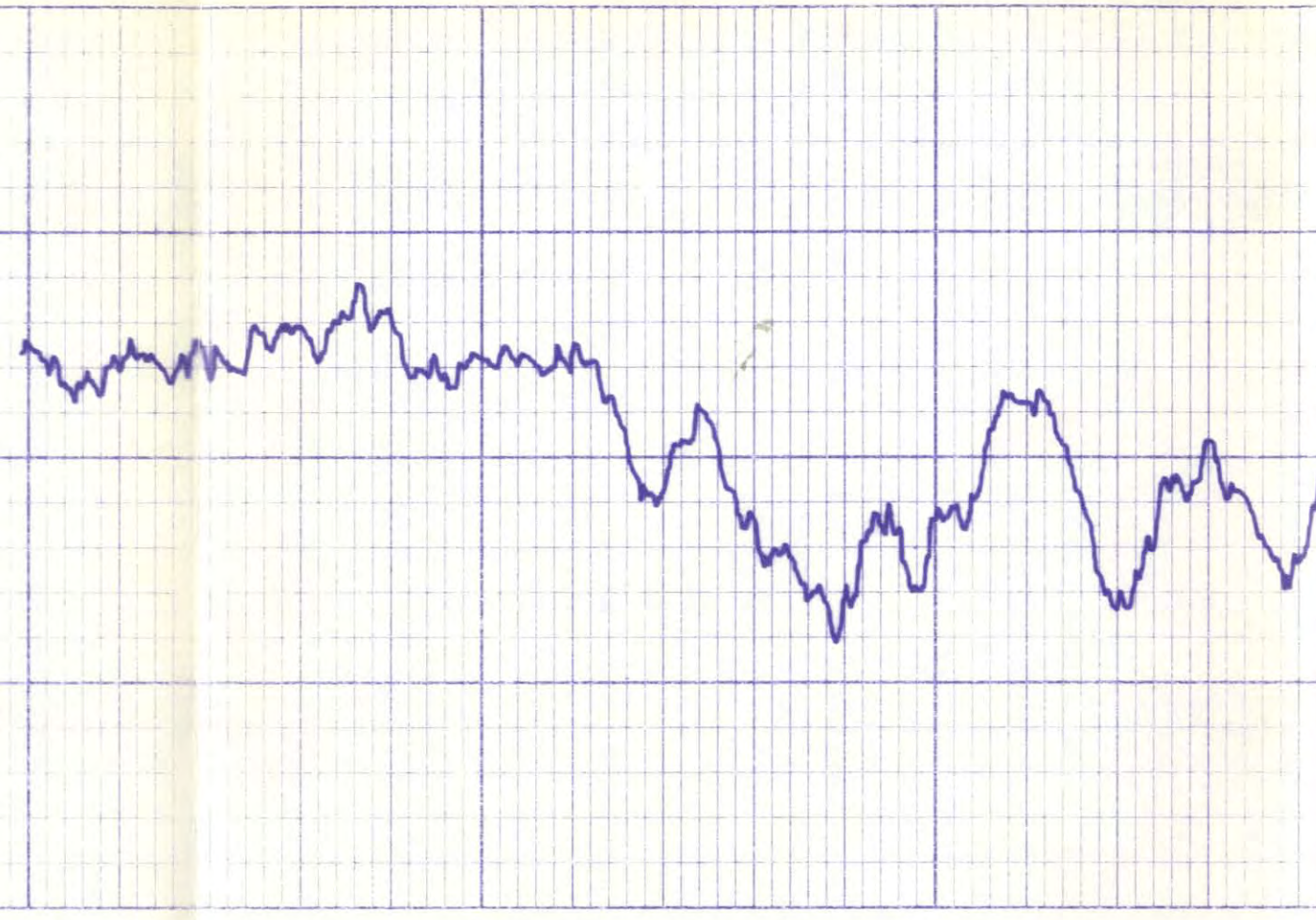
200'

210'

220'

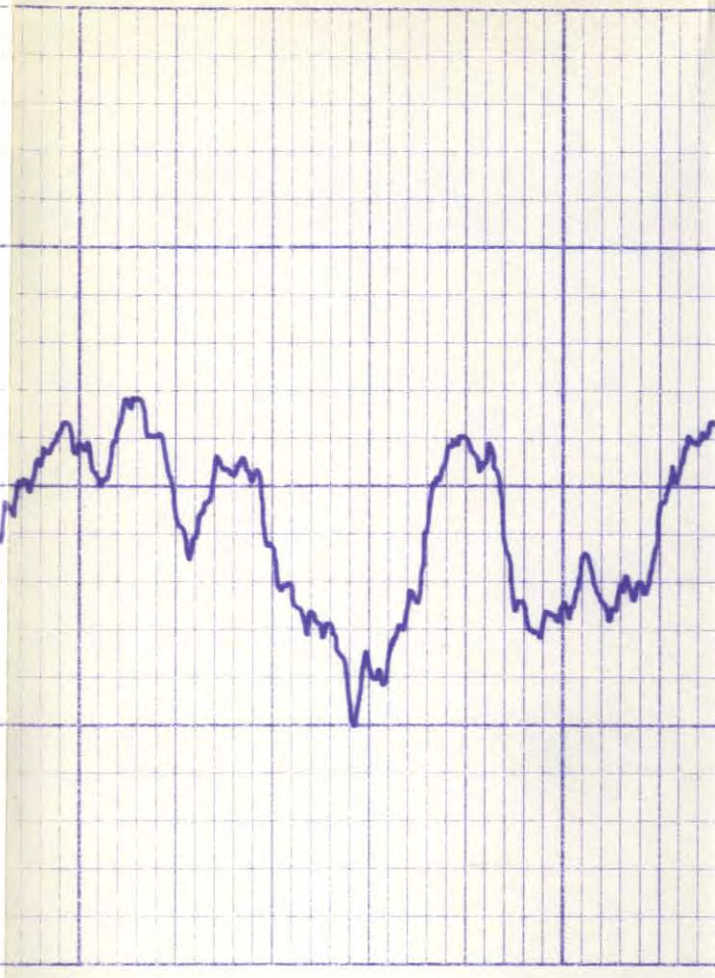


230'

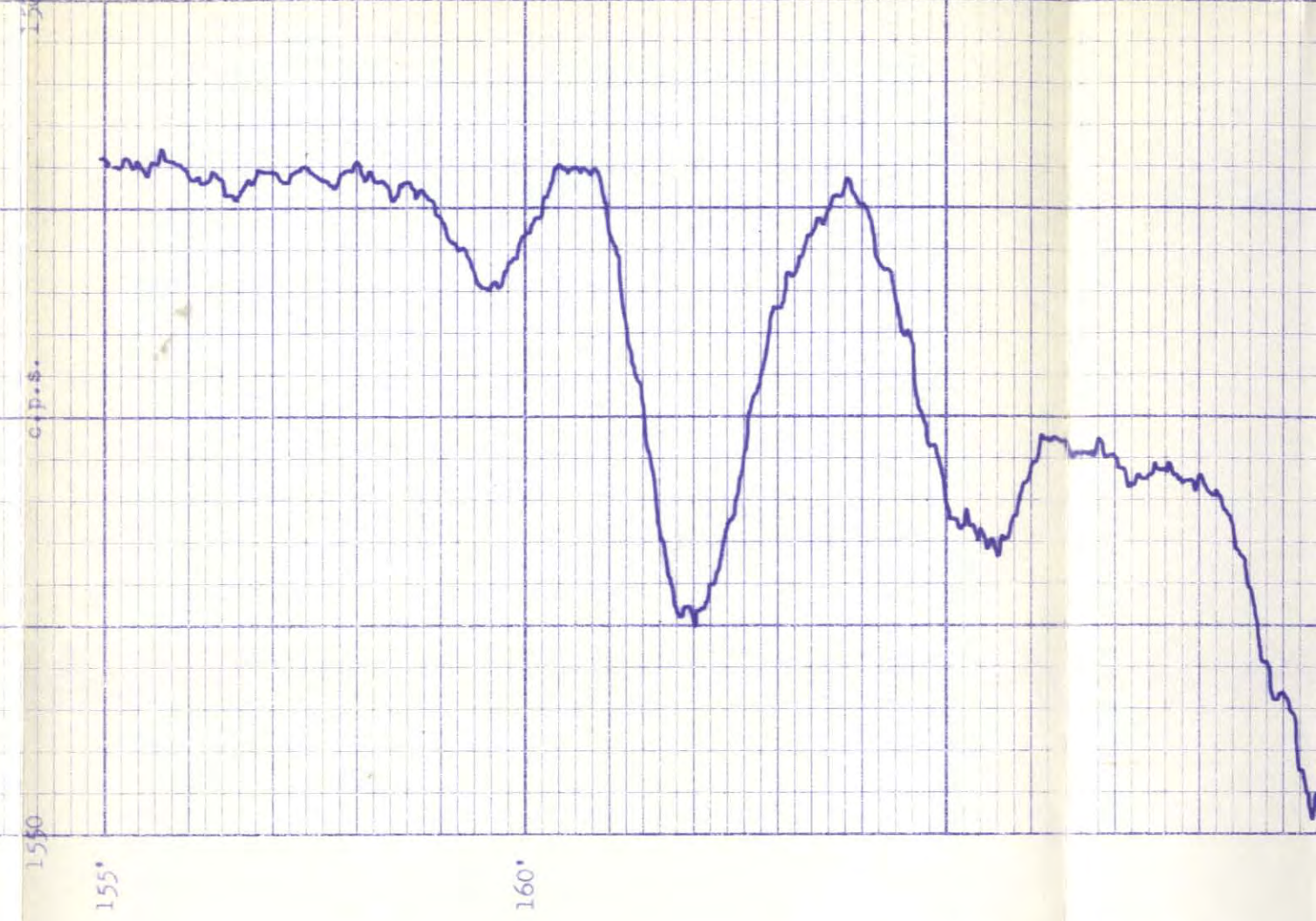
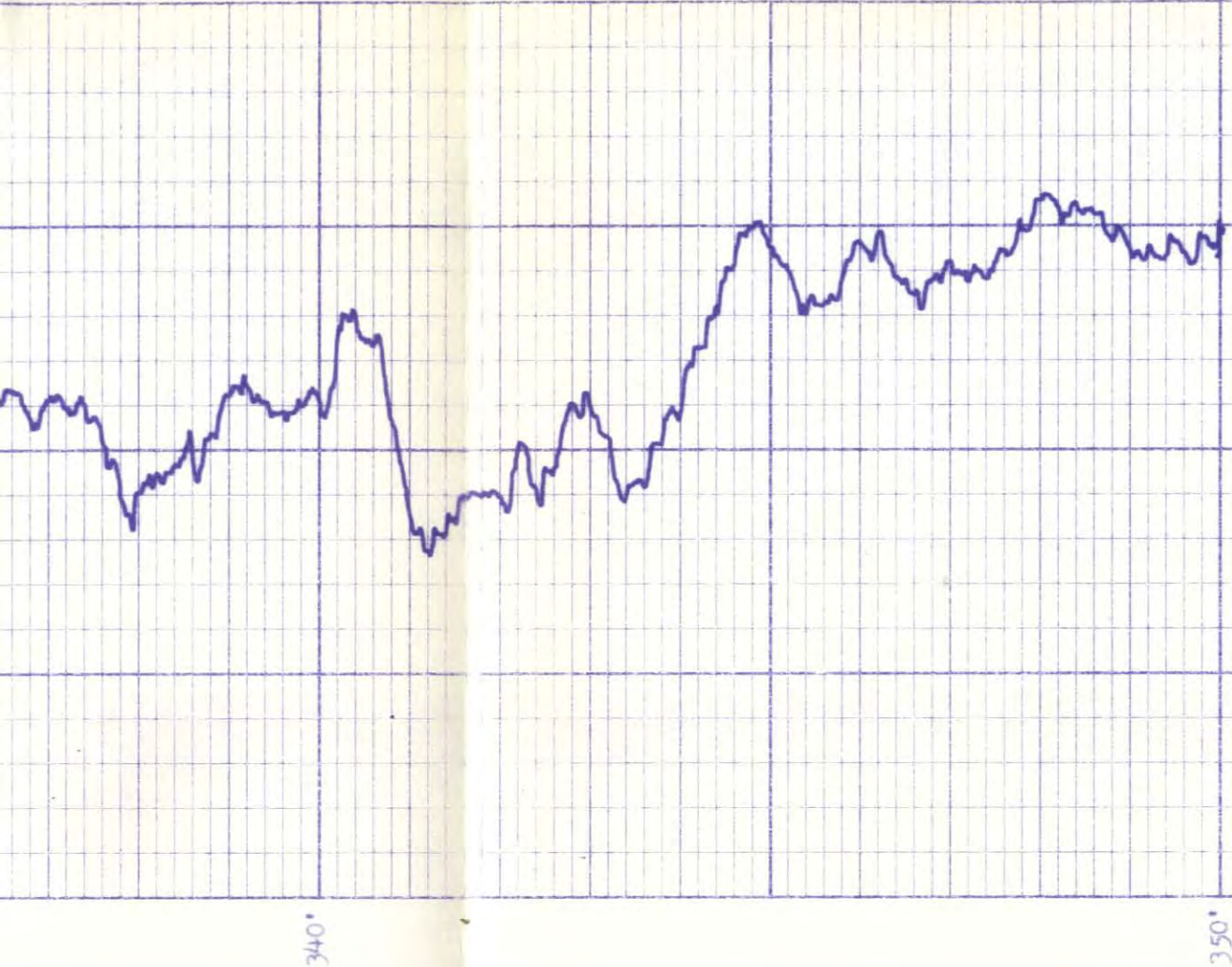


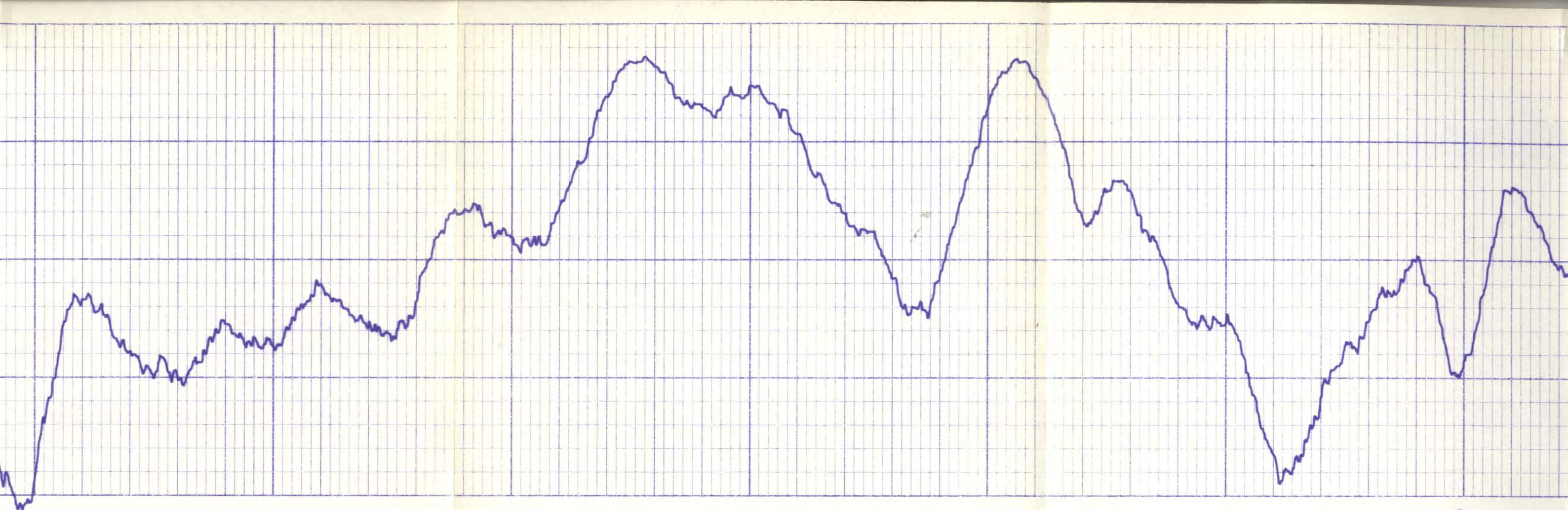
315'

320'



330'



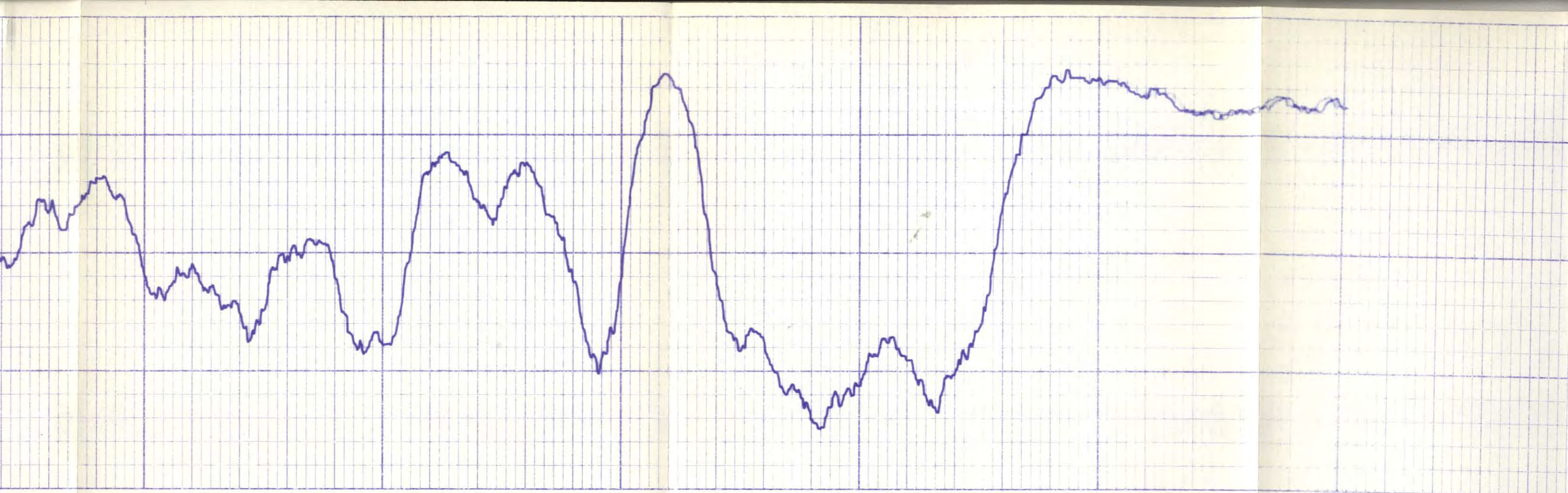


170°

180°

190°

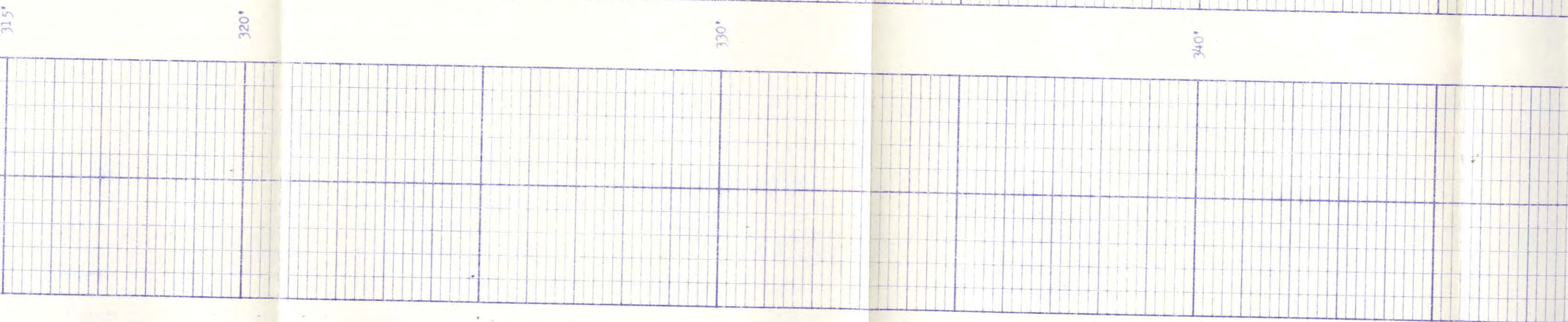
200°



210'

220'

230'

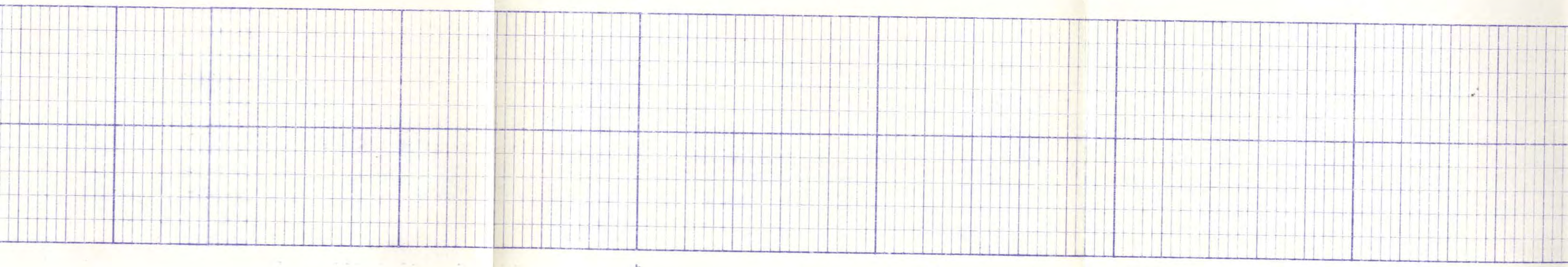
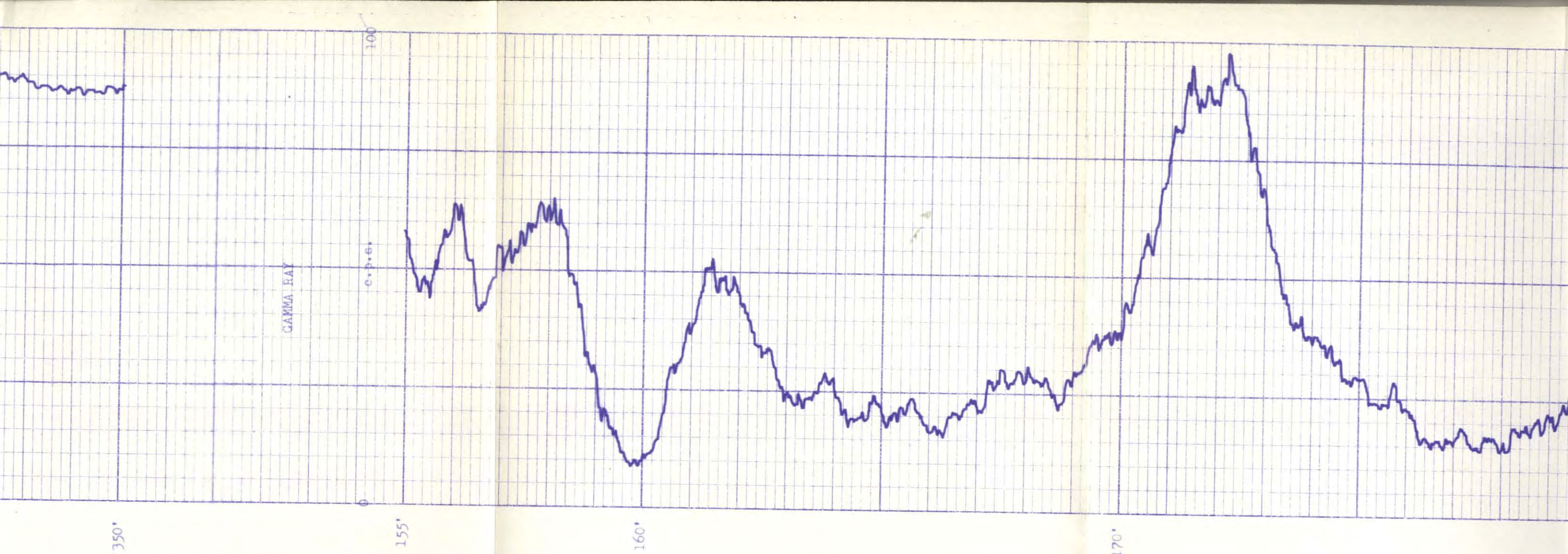


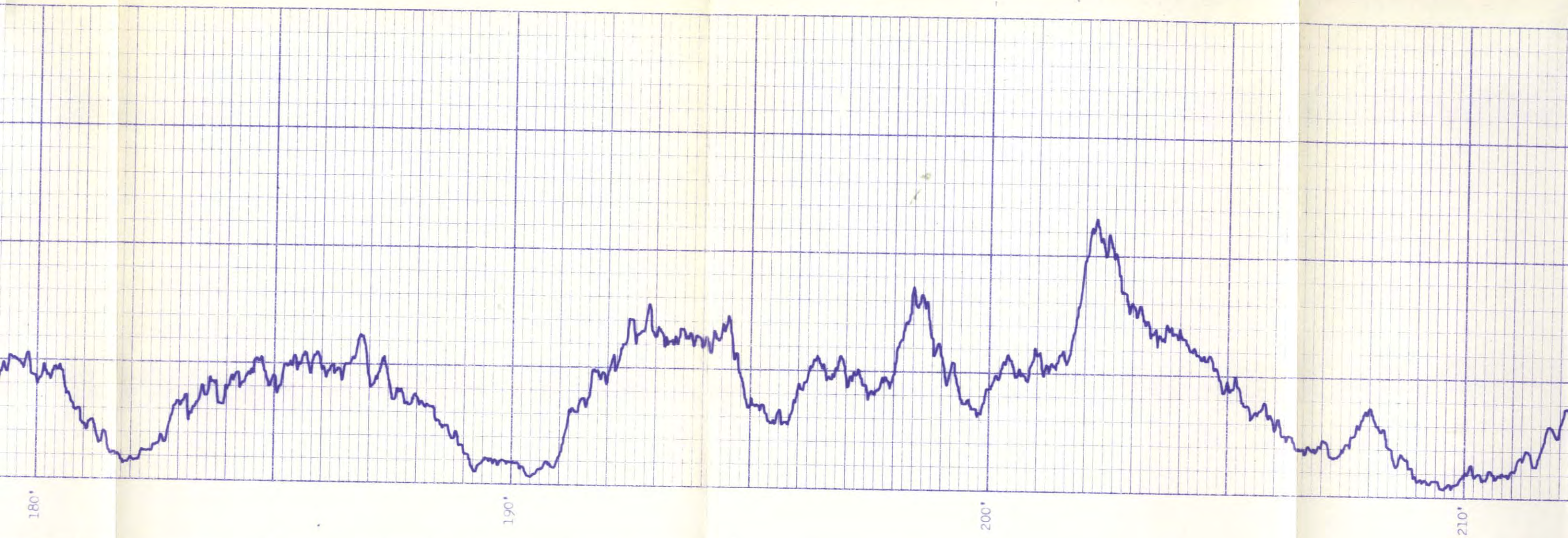
315°

320°

330°

340°



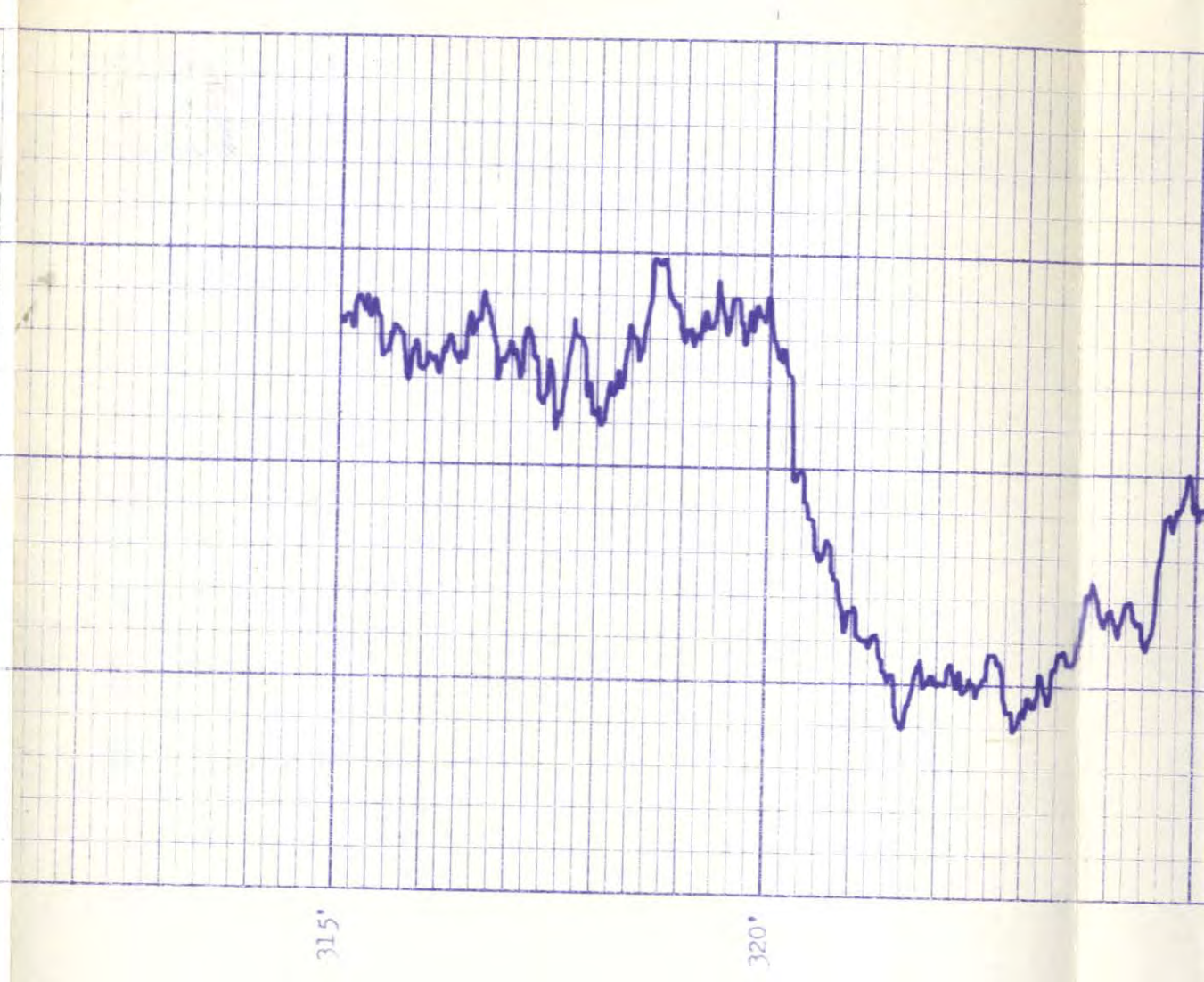
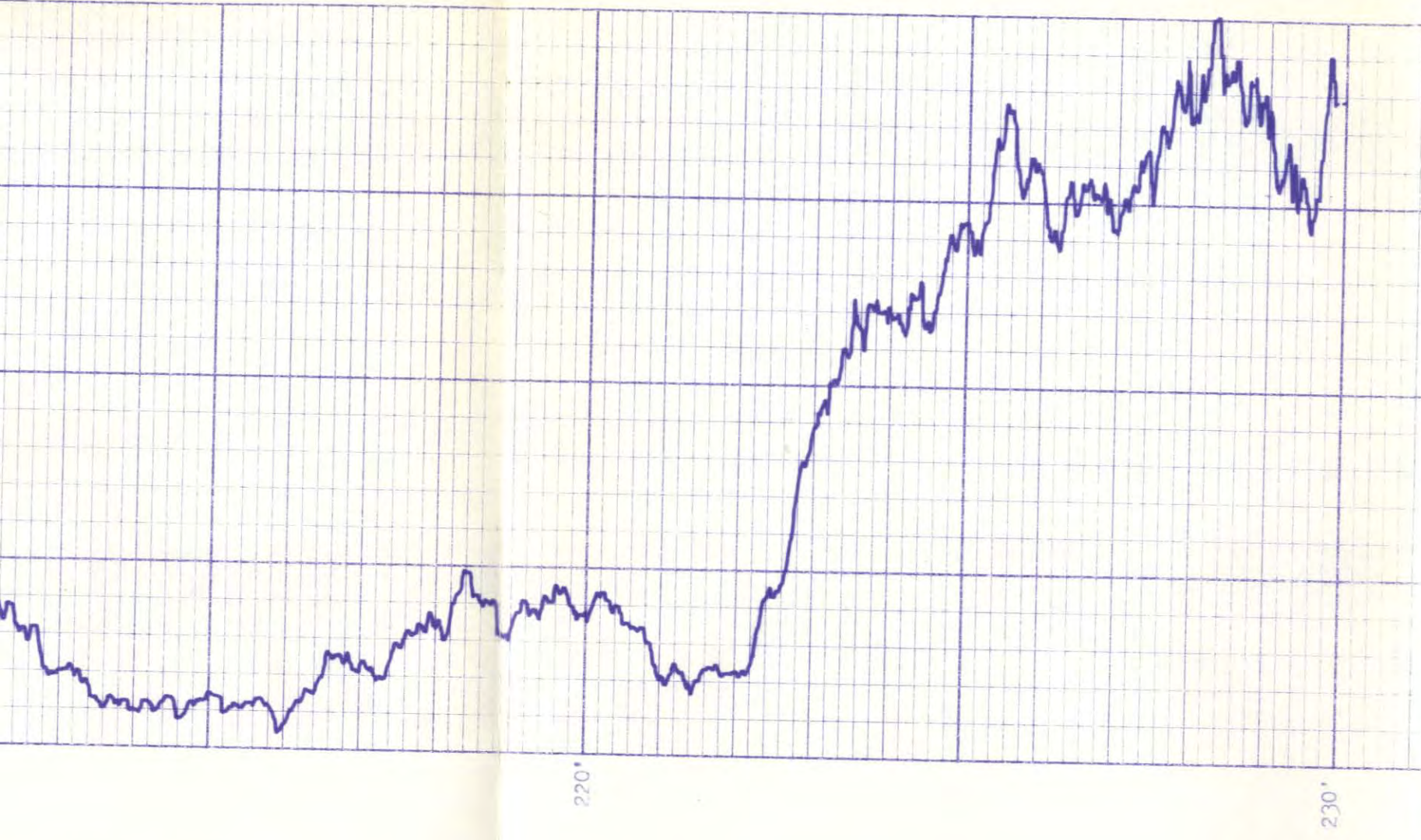


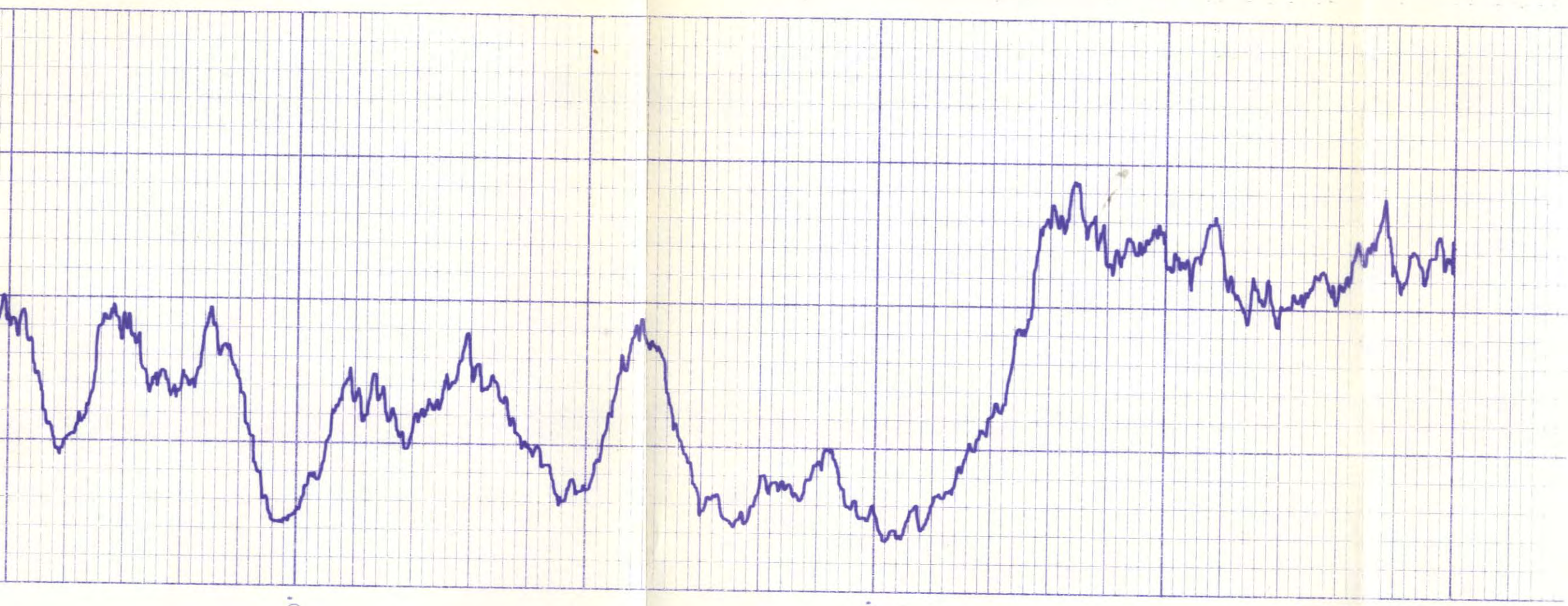
180°

190°

200°

210°





330

340

350