

810431



DETAIL LOGS  
**GAMMA RAY L.S.D.**  
**H.R.D.**

COMPANY CYPRUS ANVIL  
 BOREHOLE # T-77-5 Thru drill stem @ 45°  
 STATE British Columbia COUNTRY Canada.

Permanent Datum Ground level Elev 4100 Ft.  
 Log measured from Ground level zero Ft. above P.D.  
 Drilling measured from Ground level zero Ft. above P.D.

Run No.	Depth Scale	1	2' :1"		
Date	8th Aug 1977				
First Reading	386'				
Last Reading	215'				
Interval Measured	116'				
Casing BPB					
Casing Driller					
Depth Reached	386.3'				
Bottom Driller	392'				
Mud Nature	Natural				
S.G.	Viscosity				
Bit Size	1	4 3/4"	to	4 1/2"	to
	2	3 7/8"	to	T.D.	to
	3		to		to
Casing Size	1		to		to
	2		to		to
Rm @ Meas Temp.		@		@	@
Rmf @ Meas Temp.		@		@	@
Rmc @ Meas Temp.		@		@	@
BHT					
Operating Time	2 1/2 hrs.				
Truck No.	27 /4				
Recorded By	A. Anthony.				
Witness					

fold here

**REMARKS**

Changes in Mud Type or Additional Samples

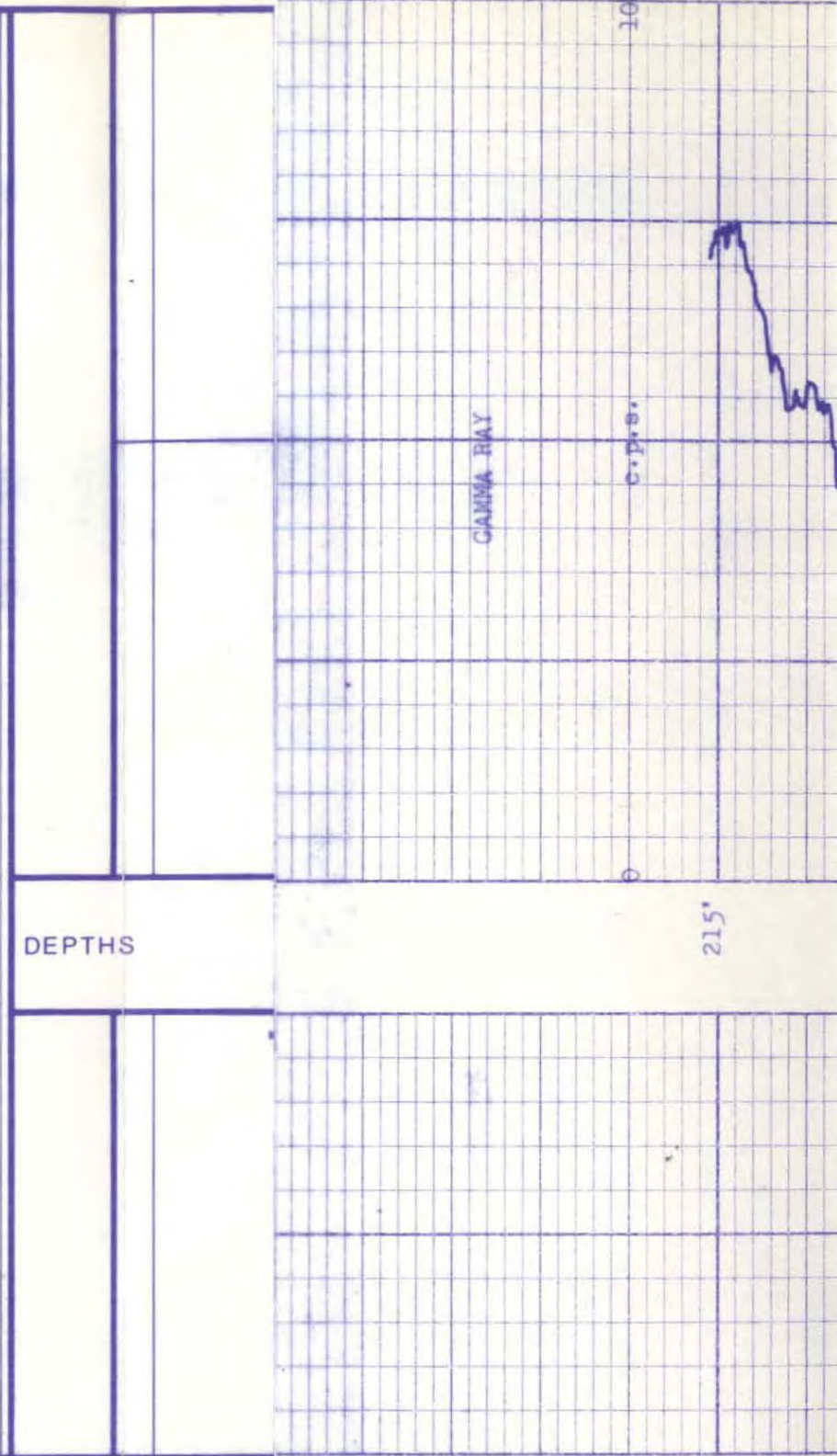
Date	Sample No.			
Depth - Driller				
Type Fluid in Hole				
Dens.	Visc.			
ph.	Fluid Loss		ml	
Source of Sample				
Rm @ Meas Temp.		@	%F	%F
Rmf @ Meas Temp.		@	%F	%F
Rmc @ Meas Temp.		@	%F	%F
Source: Rmf	Rmc			
Rm @ BHT		@	%F	%F
Rmf @ BHT		@	%F	%F
Rmc @ BHT		@	%F	%F

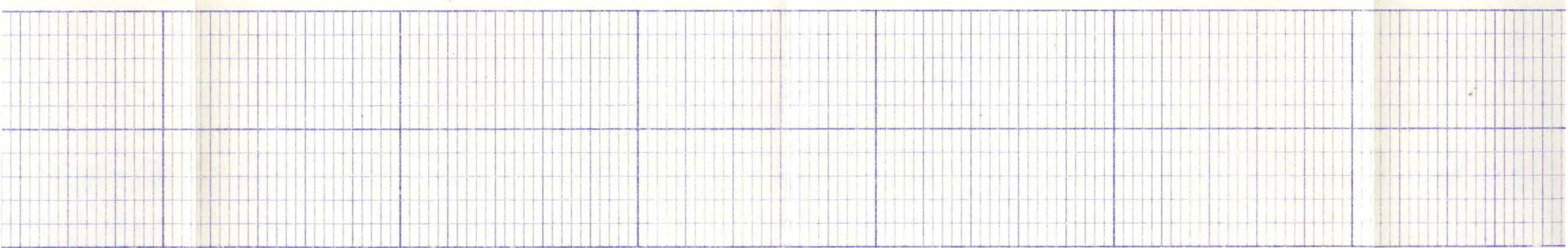
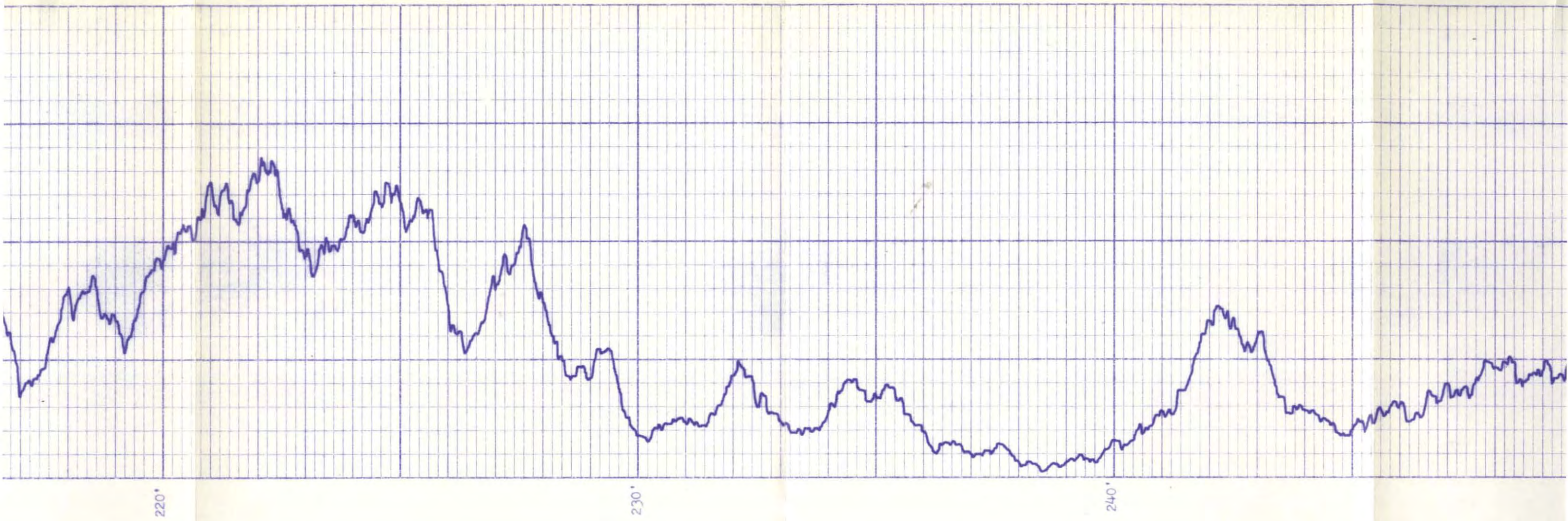
Type Log	Depth	Scale Changes		Scale Down
		Scale Up Hole	Scale Down	
Run No.	Tool Type	Equipment Data		Other
		Tool Position	Other	

Log	Depths		Speed	T.C.	Norm.	Sonde No.	Source
	From	To					
Gamma	385'	355'	7.5	2	Out	8	--
"	300'	215'	"	"	"	"	--
L.S.D.	385'	355'	"	1	"	90	C - 50
"	300'	215'	"	"	"	"	"
H.R.D.	386'	355'	"	"	"	"	C - 2
"	300'	215'	"	"	"	"	"

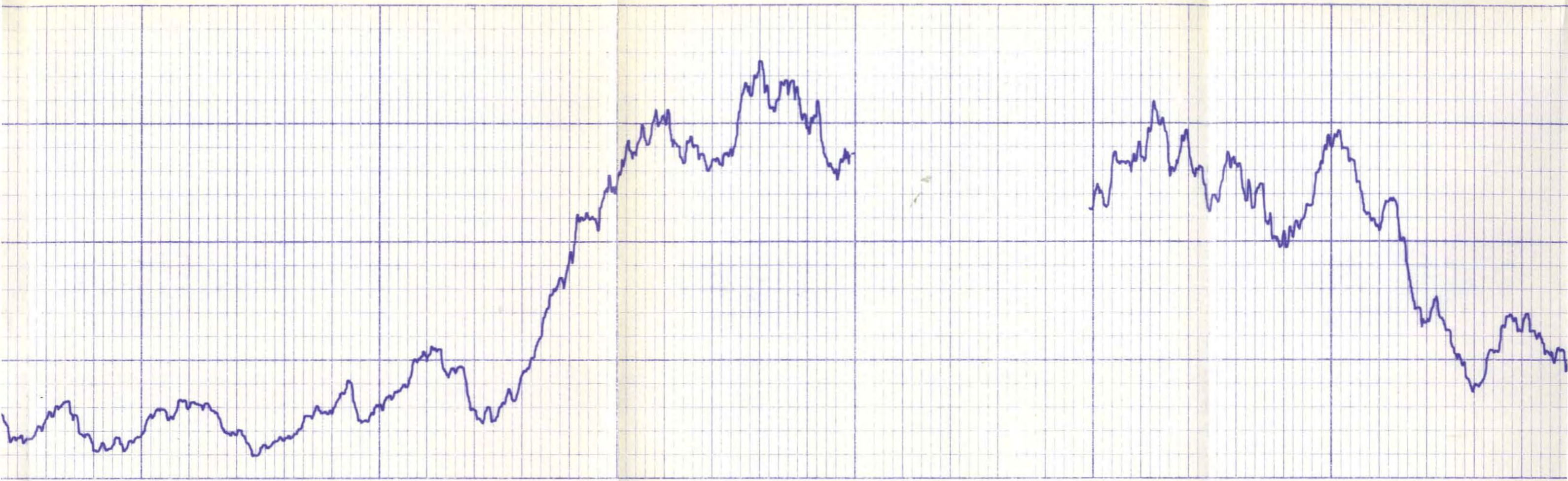
Logged thru drill stem hence no Caliper log.

**DEPTHS**







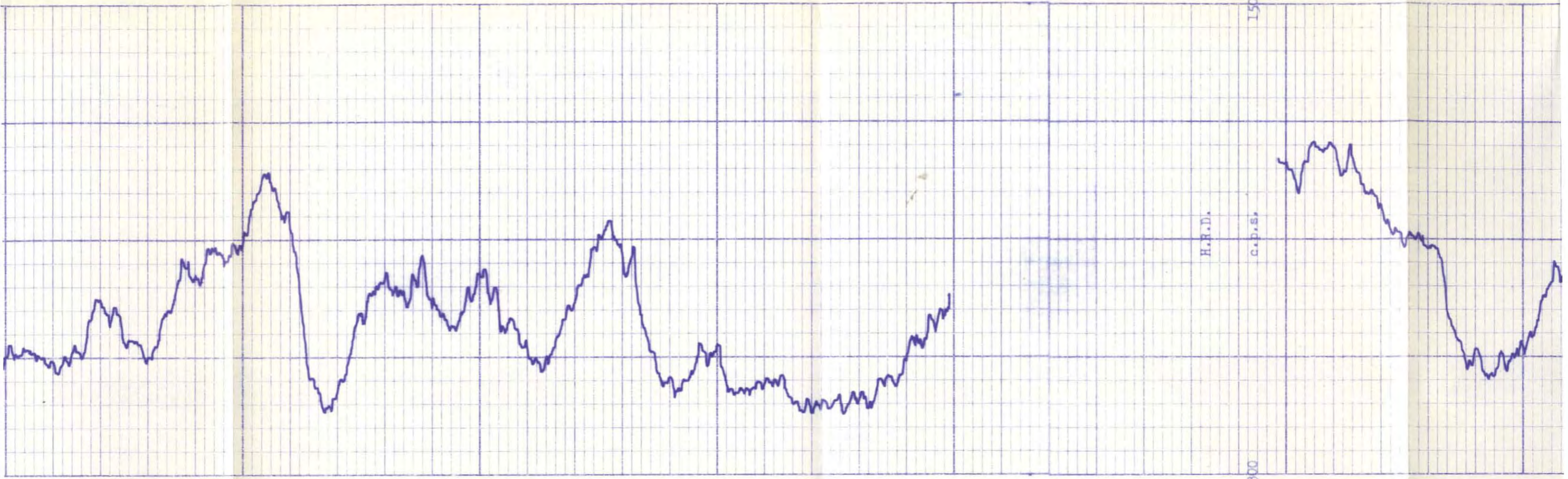


290'

300'

355'

360'



370'

380'

385'

3300

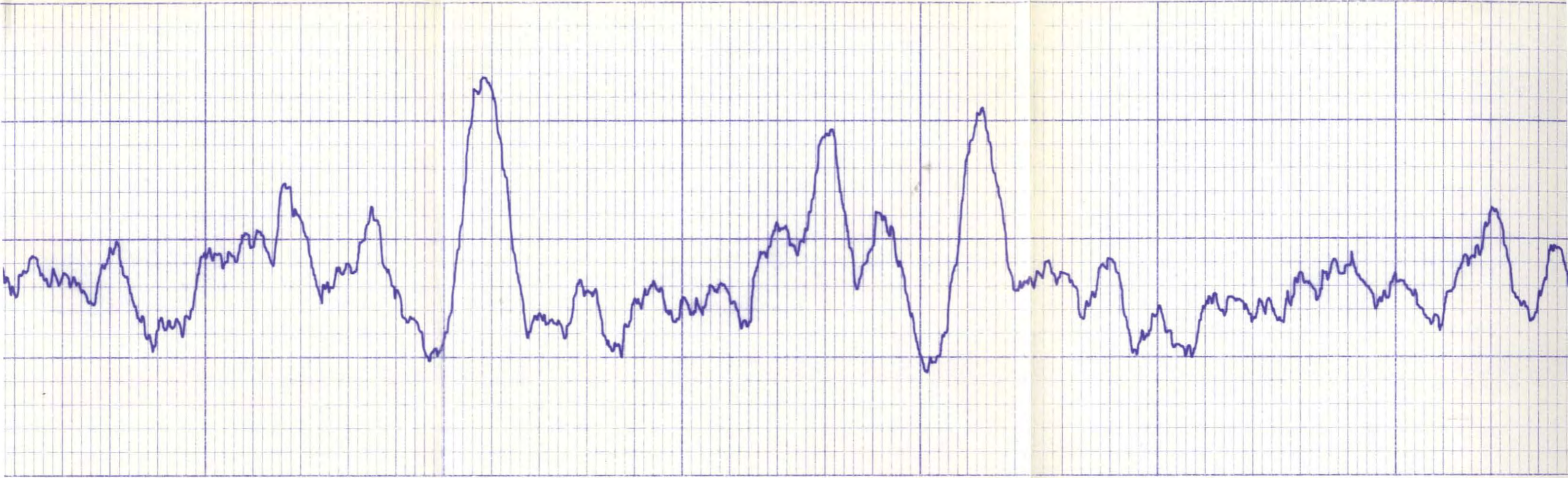
215'

220'

H.R.D.

C.P.S.

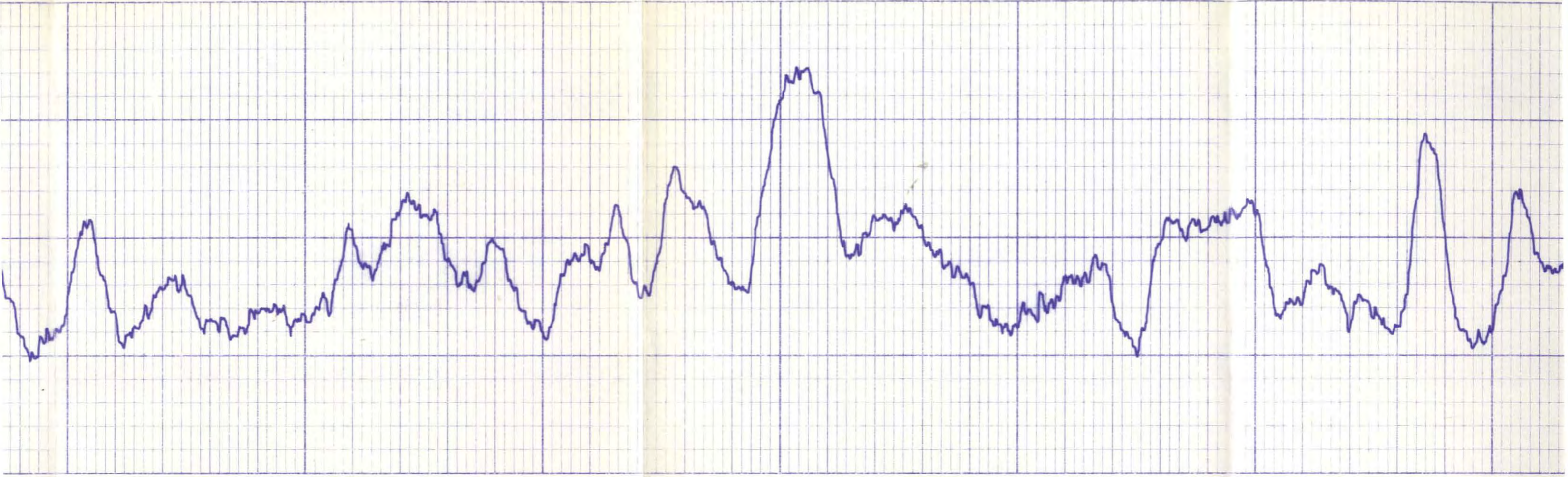
1500



230'

240'

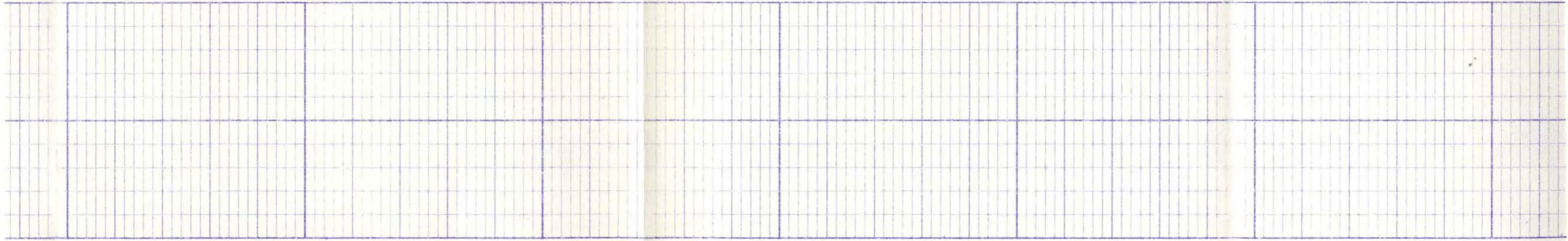
250'

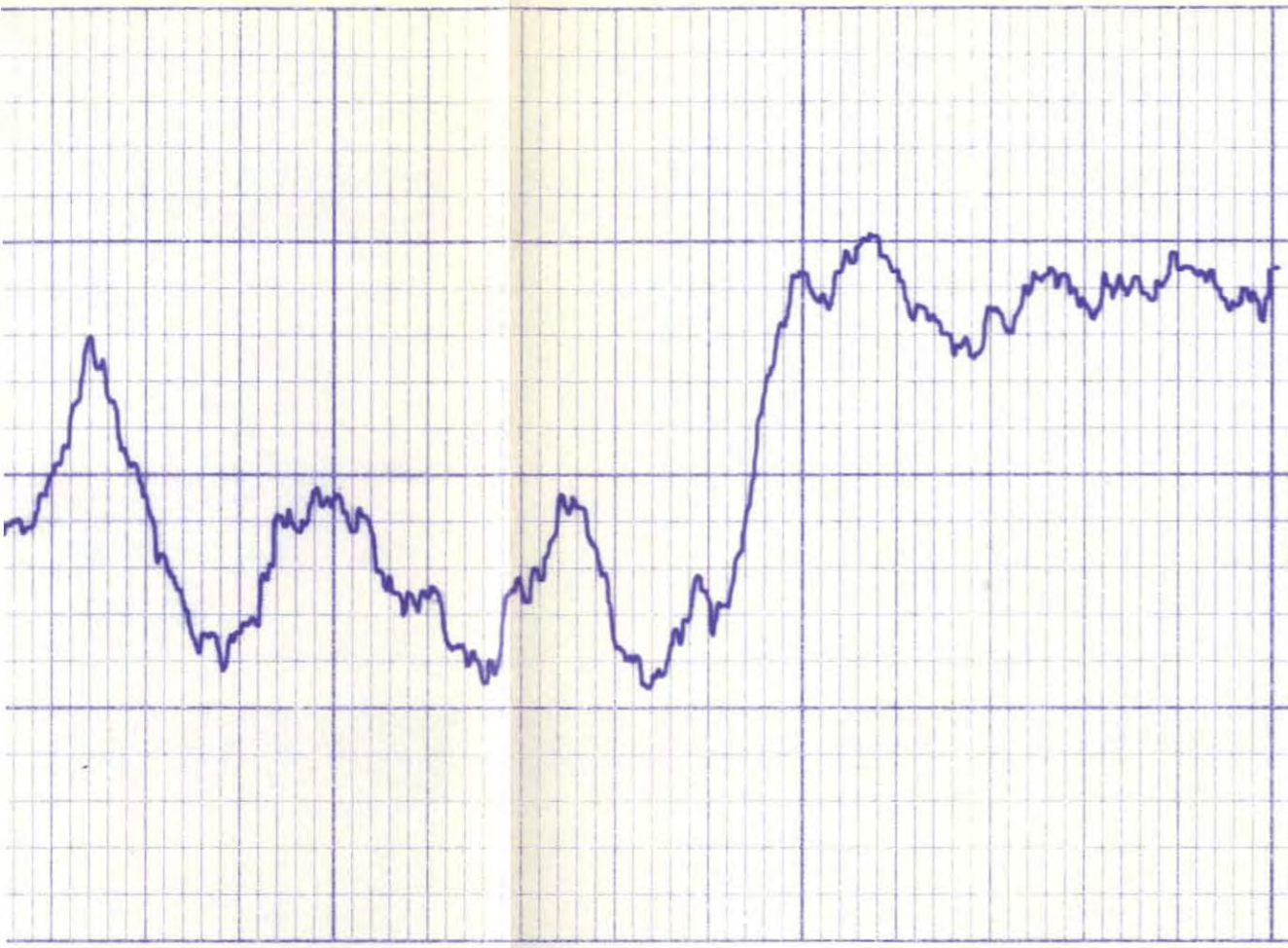


260'

270'

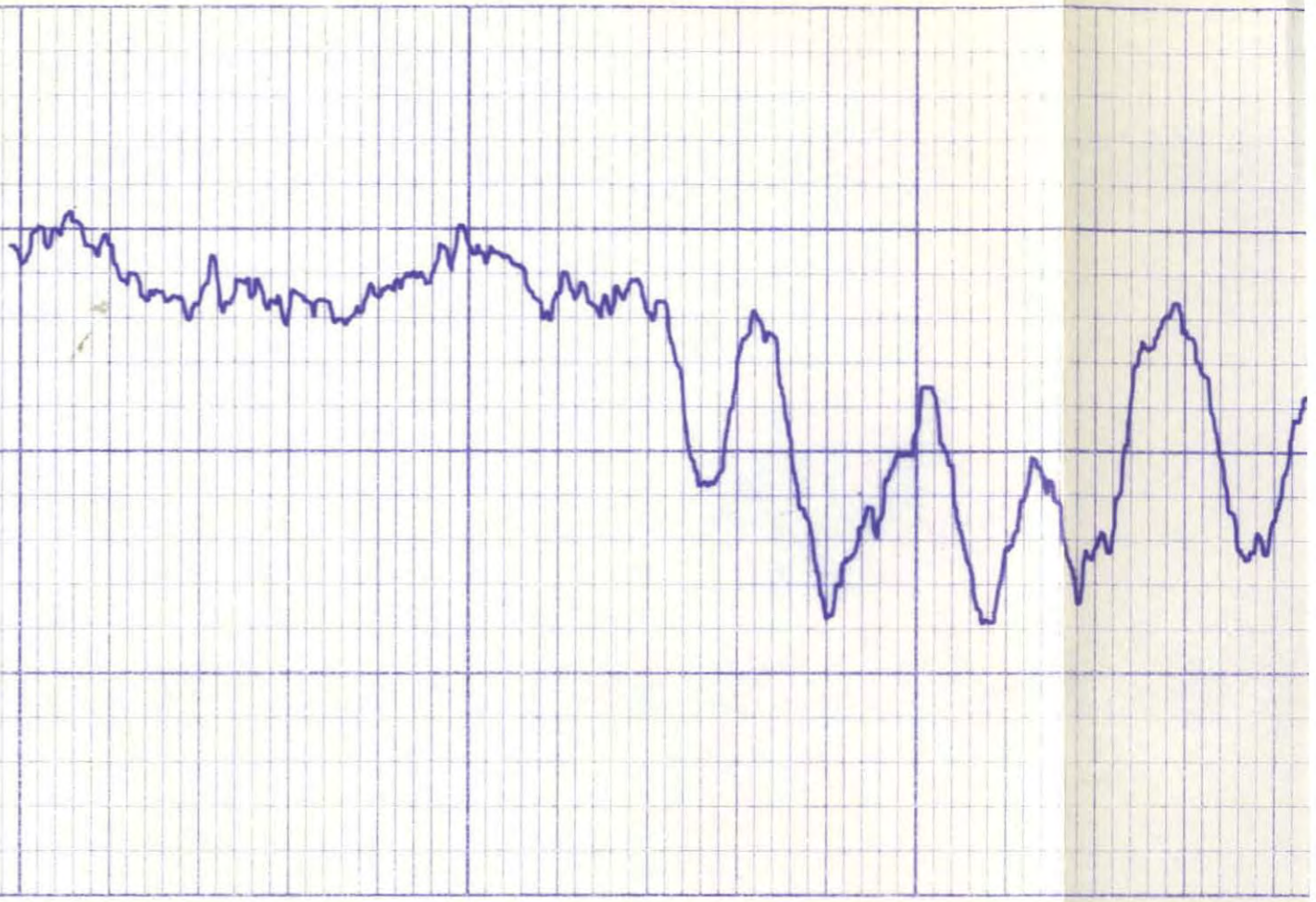
280'





290°

300°



355°

360°



370'

380'

386'

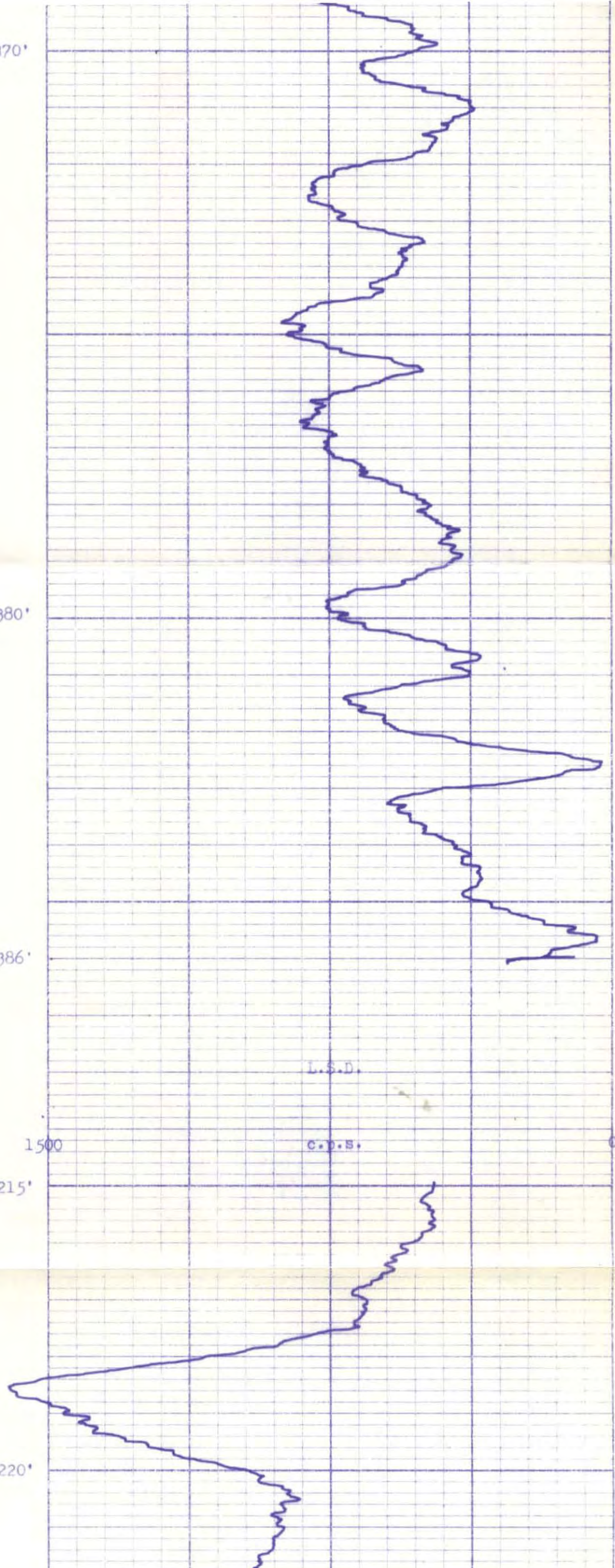
1500

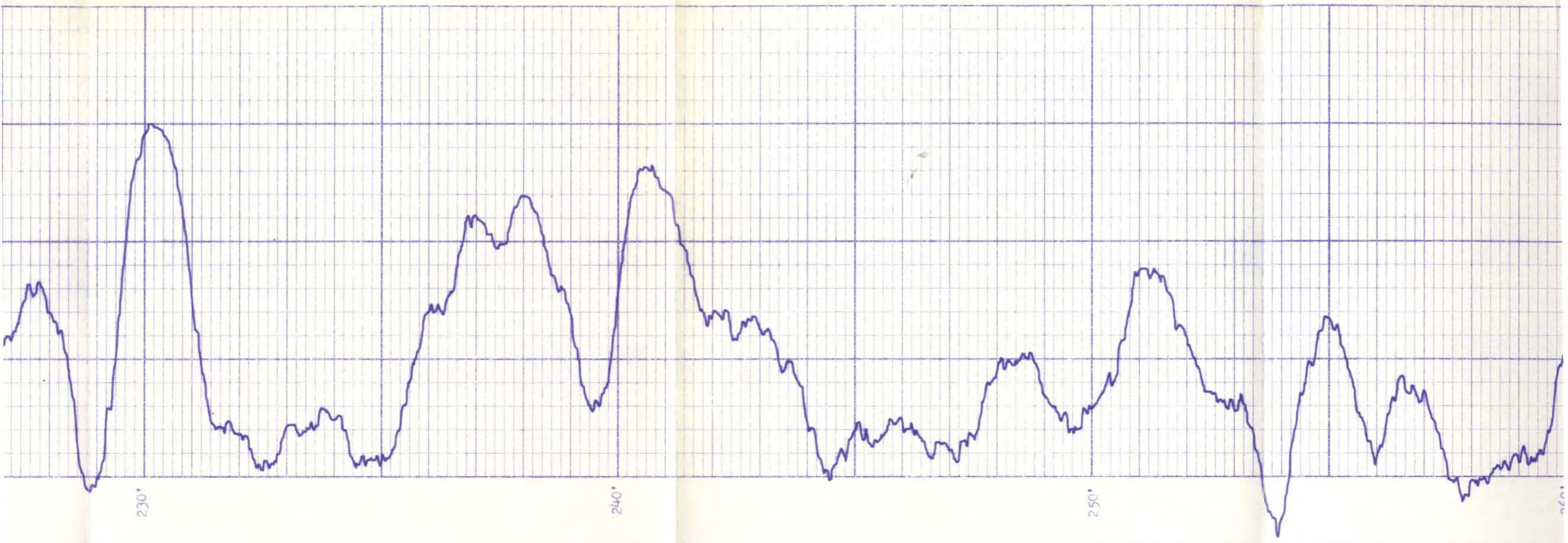
215'

220'

L.S.D.

C.P.S.



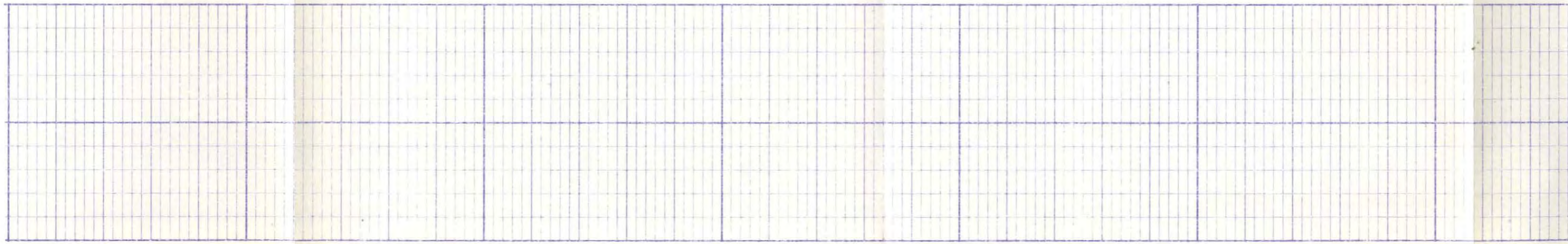
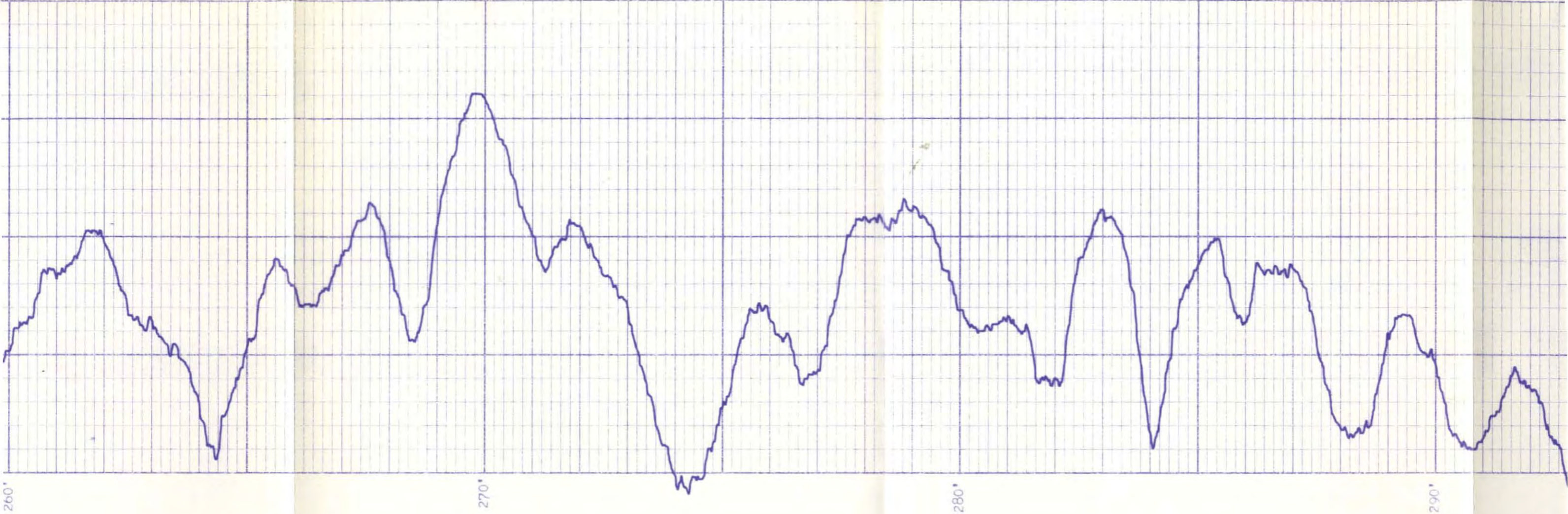


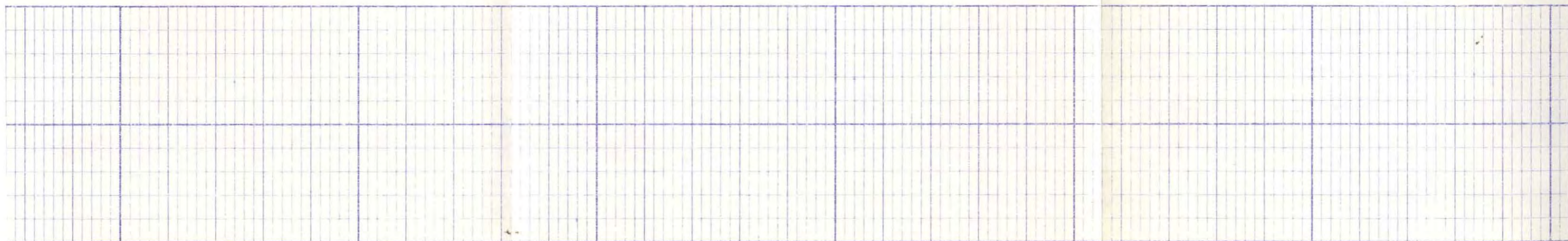
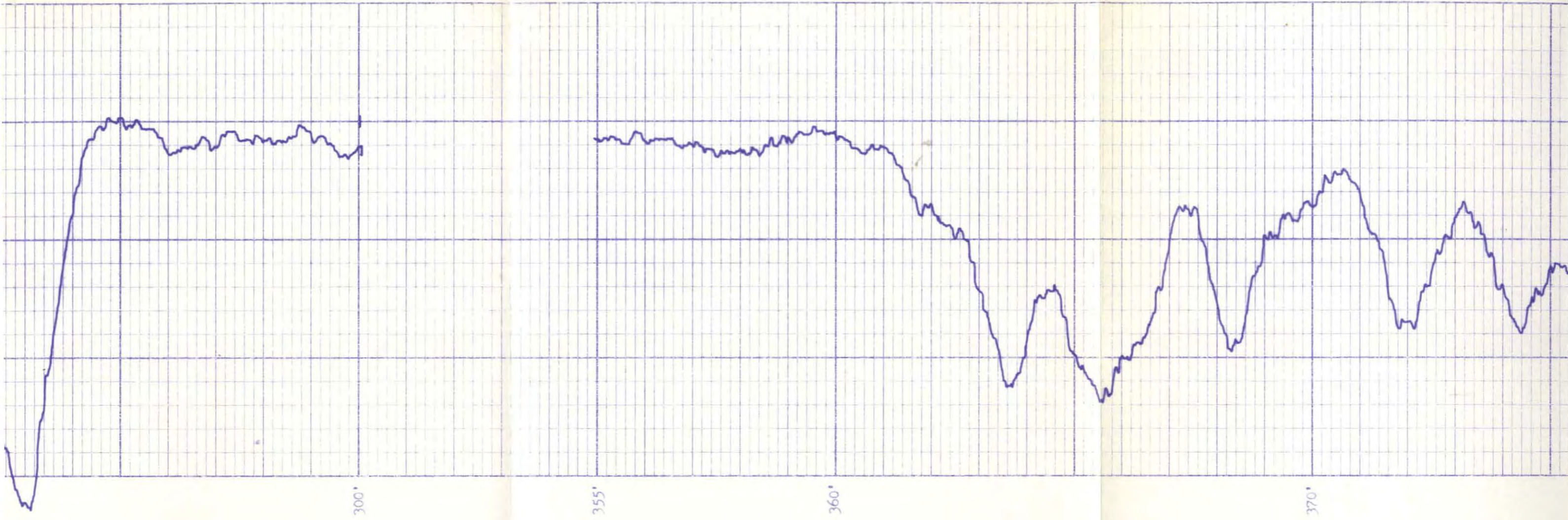
230'

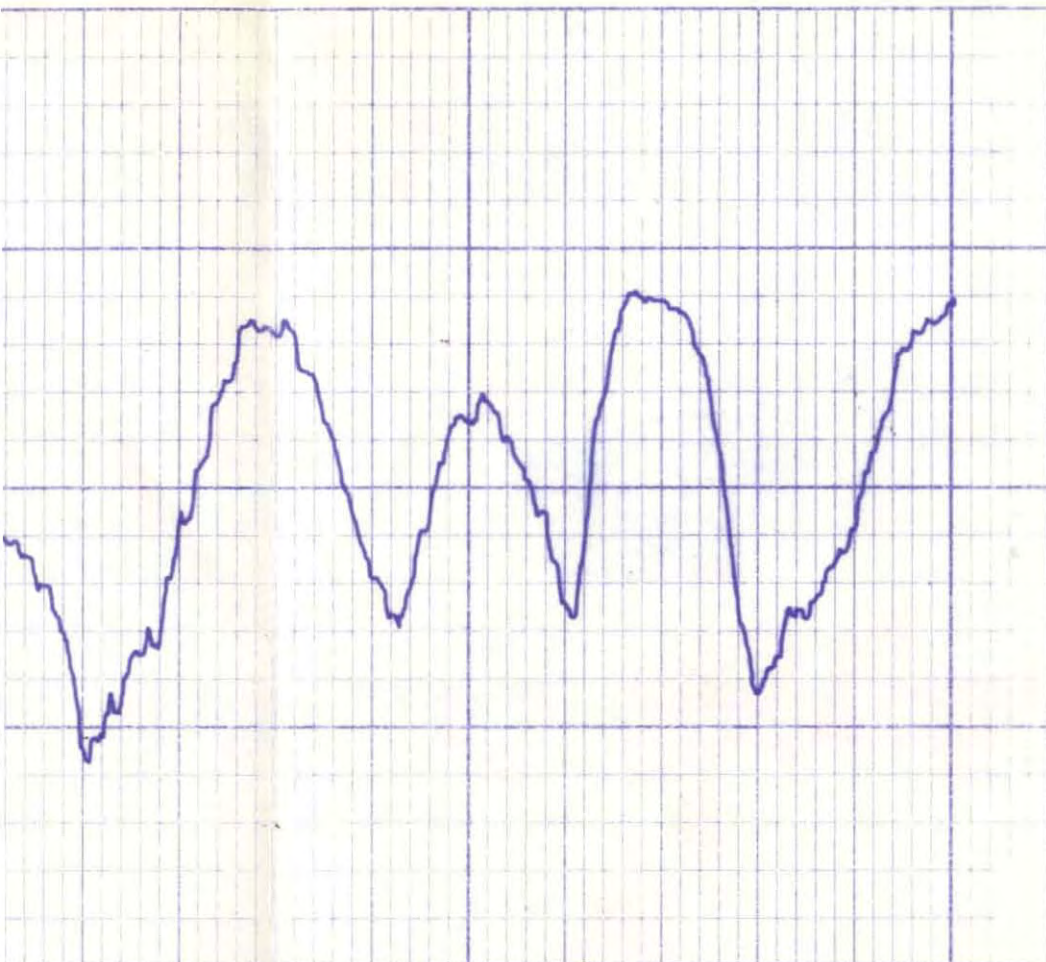
240'

250'

260'







380

385