

810429



DETAIL LOGS  
GAMMA RAY L.S.D.  
H.R.D.

COMPANY CYPRUS ANVIL.BOREHOLE # T-77-4 Thru drill stem @ 45°STATE British Columbia. COUNTRY Canada.Permanent Datum Ground level Elev 4100 Ft.Log measured from Ground level zero Ft. above P.D.Drilling measured from Ground level zero Ft. above P.D.

Run No.	Depth Scale	2' : 1"	1		
Date	4th Aug 1977				
First Reading	390'				
Last Reading	220'				
Interval Measured	110'				
Casing BPB					
Casing Driller					
Depth Reached	400.8'				
Bottom Driller	409'				
Mud Nature	Natural				
S.G.	Viscosity				
Bit Size 1	4 <sup>3</sup> / <sub>4</sub> "	to	13'	to	to
2	3 <sup>7</sup> / <sub>8</sub> "	to	T.D.	to	to
3		to		to	to
Casing Size 1		to		to	to
2		to		to	to
Rm @ Meas Temp.	@		@		@
Rmf @ Meas Temp.	@		@		@
Rmc @ Meas Temp.	@		@		@
BHT					
Operating Time	2 <sup>1</sup> / <sub>2</sub> hrs.				
Truck No.	27 / 4				
Recorded By	A. Anthony.				
Witness					

## REMARKS

Changes in Mud Type or Additional Samples

Date	Sample No.	Depth - Driller	Type Fluid in Hole	Dens.	ph.	Visc.	Fluid Loss	Source of Sample	Scale Changes			Scale Down
									Scale Up Hole	Depth	Scale Down	
Rm @ Meas Temp.	Rmf @ Meas Temp.	Rmc @ Meas Temp.	Source: Rmf	Rmc	Rm @ BHT	Rmf @ BHT	Rmc @ BHT	Run No.	Tool Type	Tool Position	Other	
@	@	@	@	@	@	@	@	@	@	@	@	
@	@	@	@	@	@	@	@	@	@	@	@	
@	@	@	@	@	@	@	@	@	@	@	@	
@	@	@	@	@	@	@	@	@	@	@	@	
@	@	@	@	@	@	@	@	@	@	@	@	

## Logging Data

Log	Depths		Speed Ft./min	T.C. Sec.	Norm.	Sonde No.	Source Number
	From	To					
Gamma	390'	350'	7.5	2	Out	8	
"	290'	220'	"	"	"	"	
L.S.D.	390'	350'	"	1	"	90	C - 50
"	290'	220'	"	"	"	"	"
H.R.D.	390'	350'	"	"	"	"	C - 2
"	290'	220'	"	"	"	"	"

Logged thru drill stem therefore no Caliper or B.R.D. logs.

DEPTHS



GAMMA RAY

C.P.S.

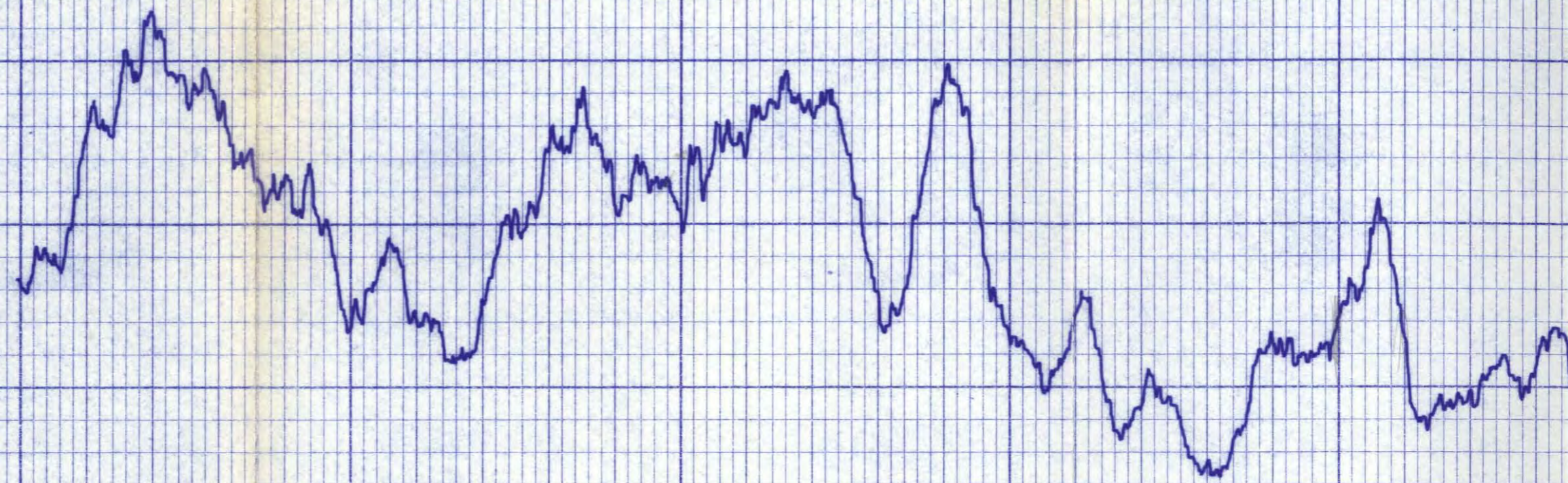
100

0

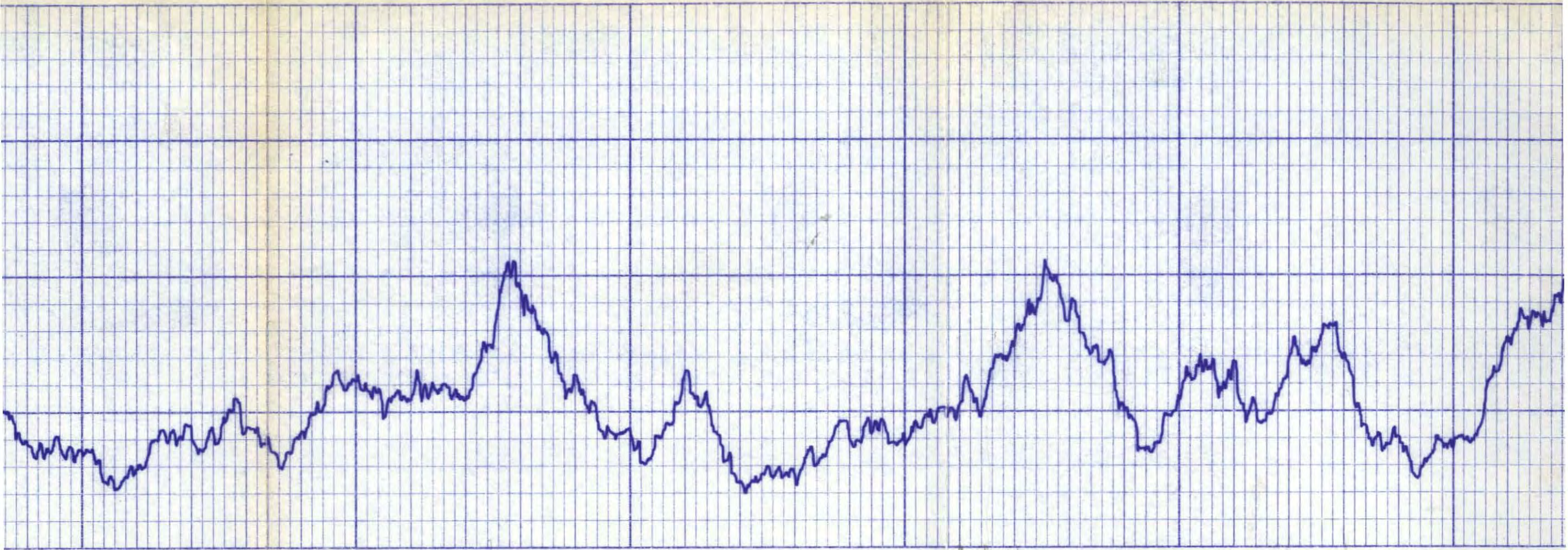
220°

230°

240°





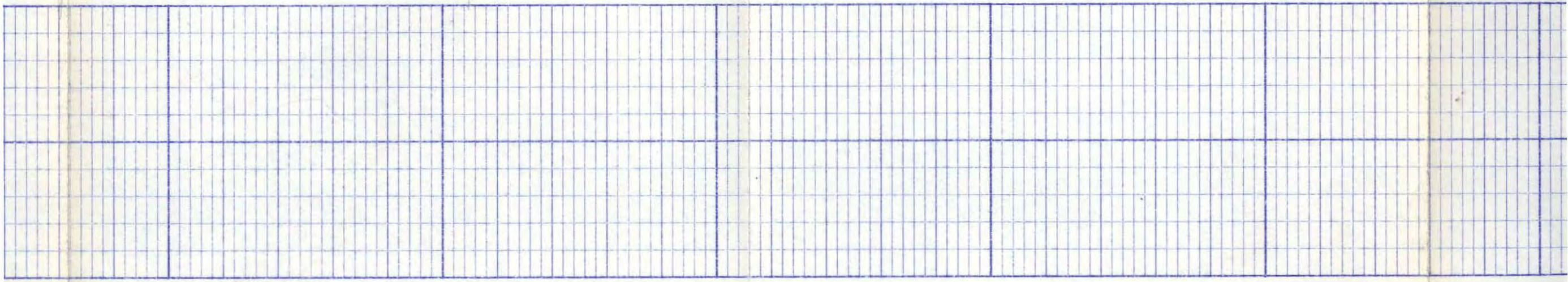
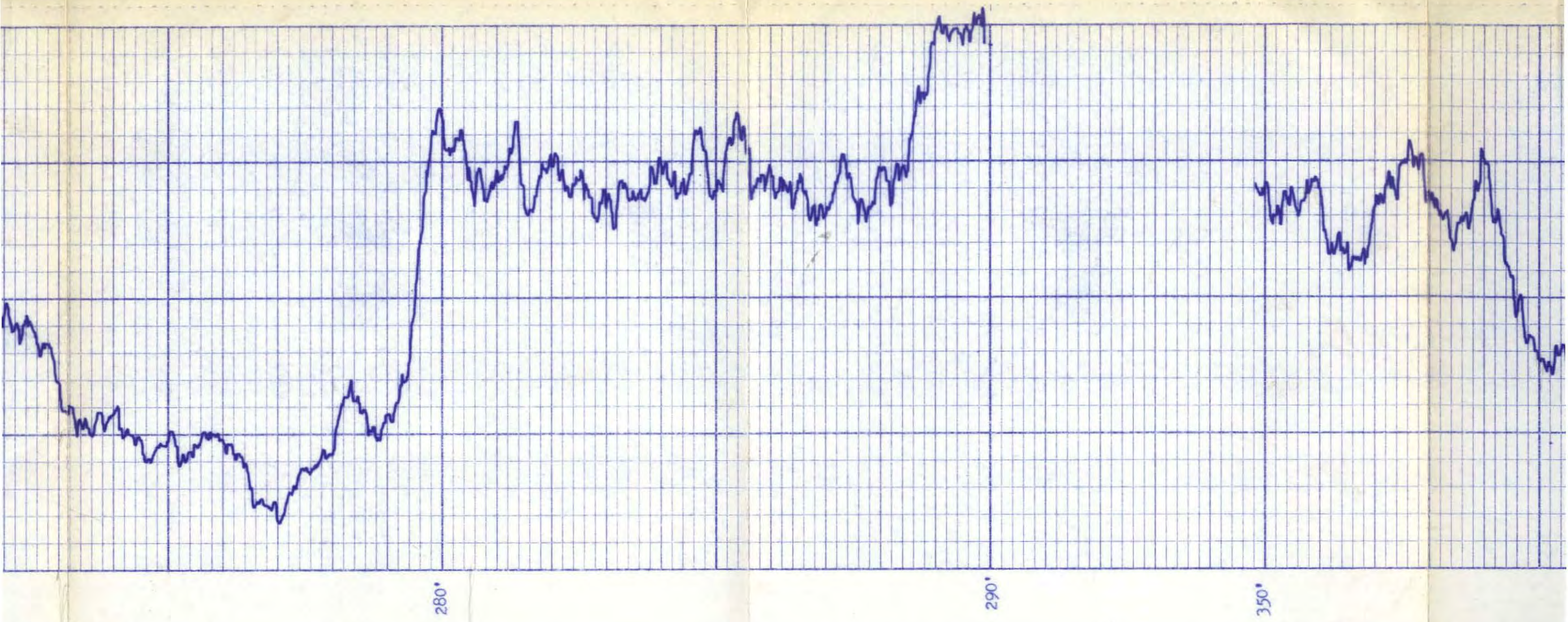


250'

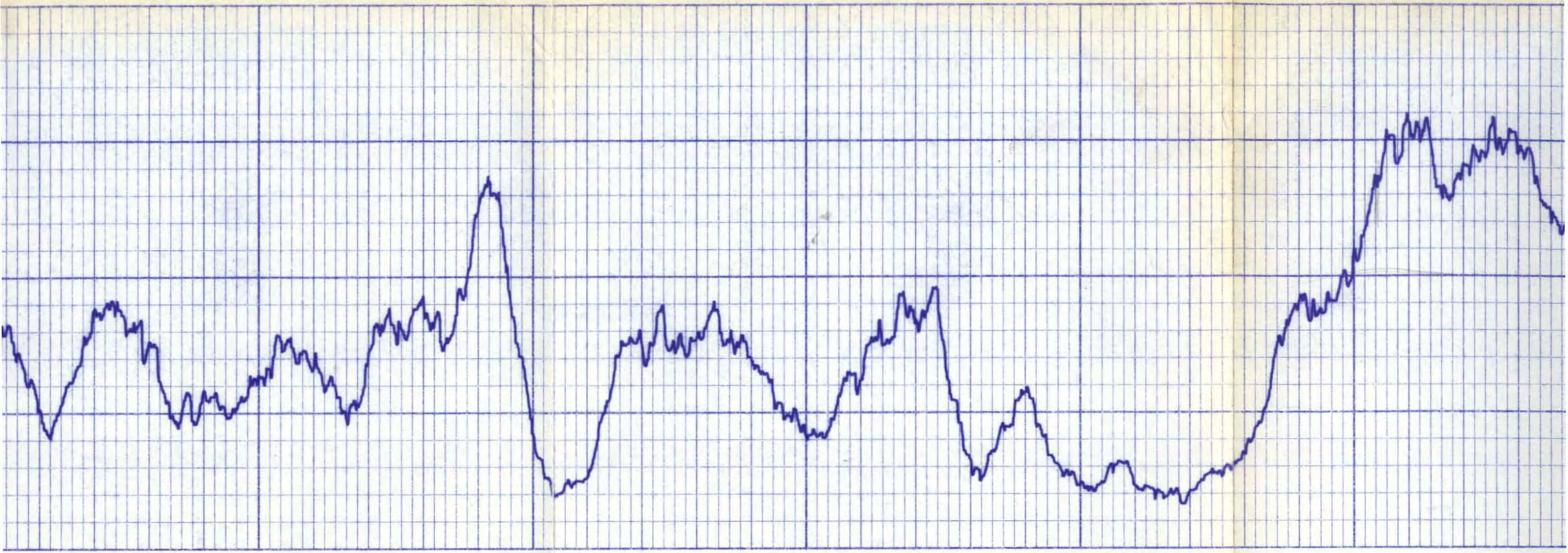
260'

270'









360°

370°

380°





390'

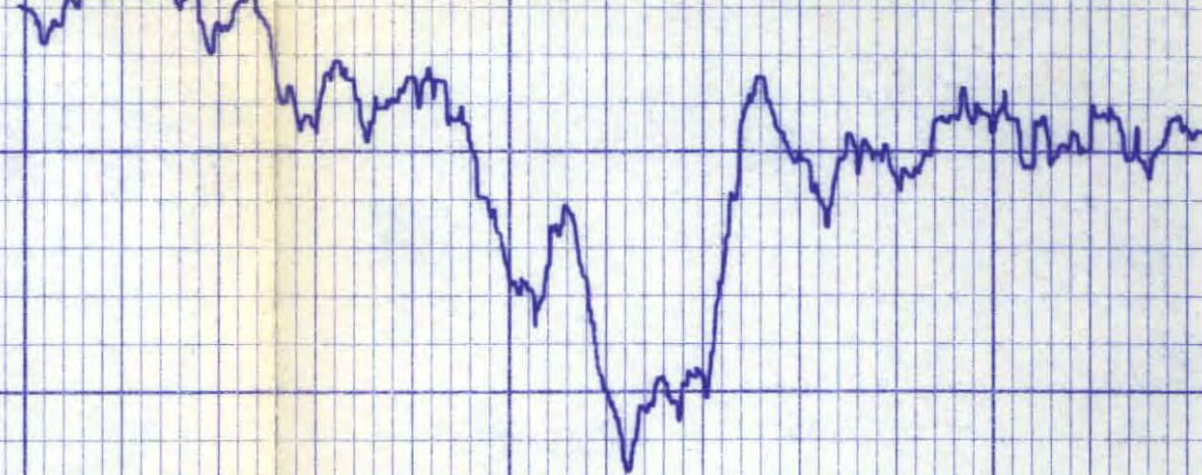
H.F.D.

C.F.B.

3600

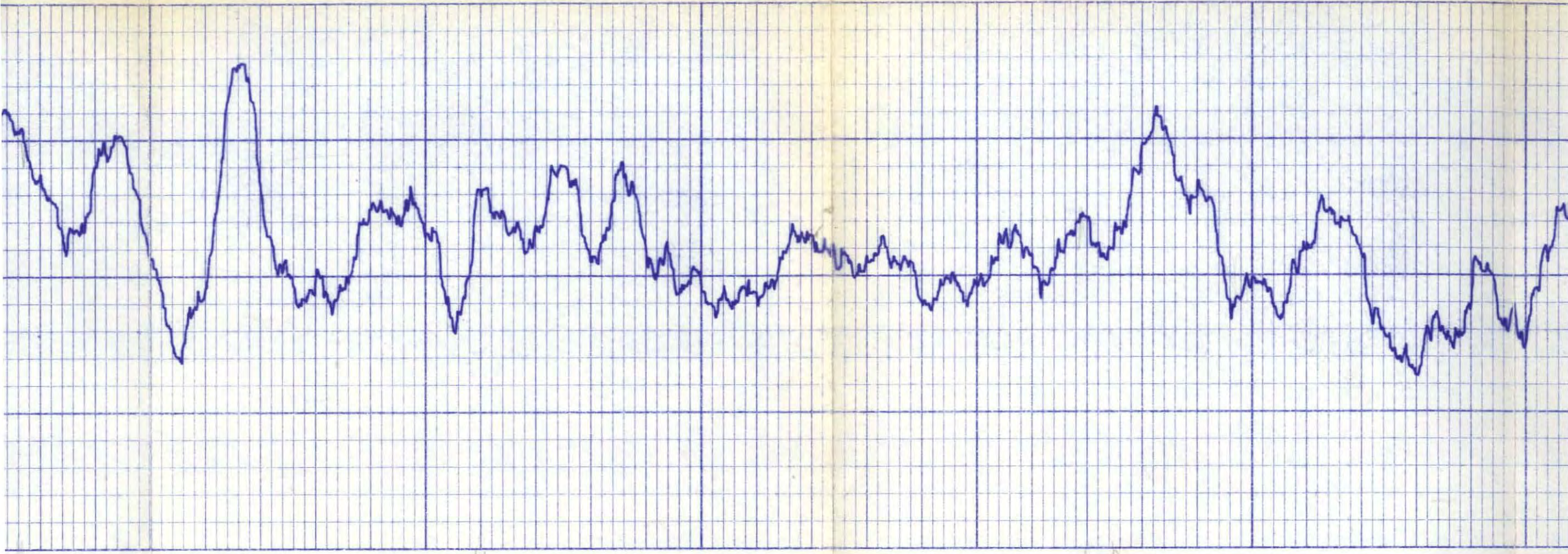
2000

220'



230'





240'

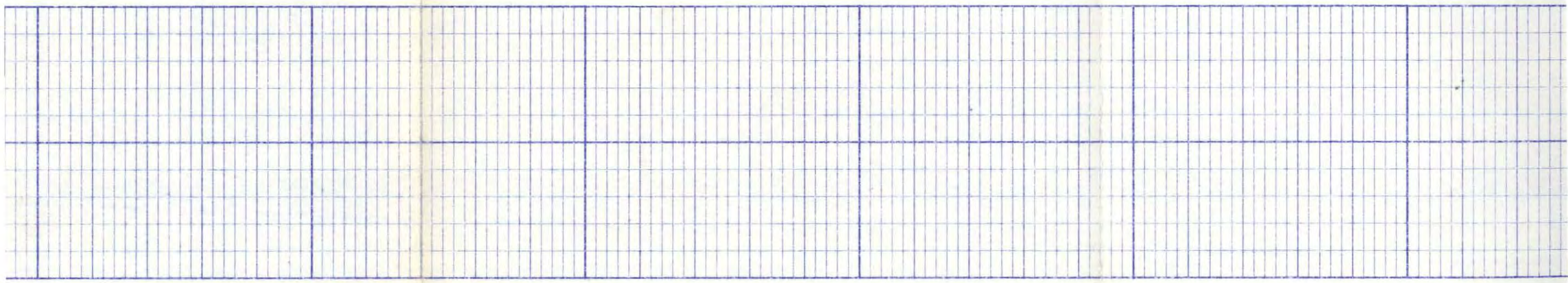
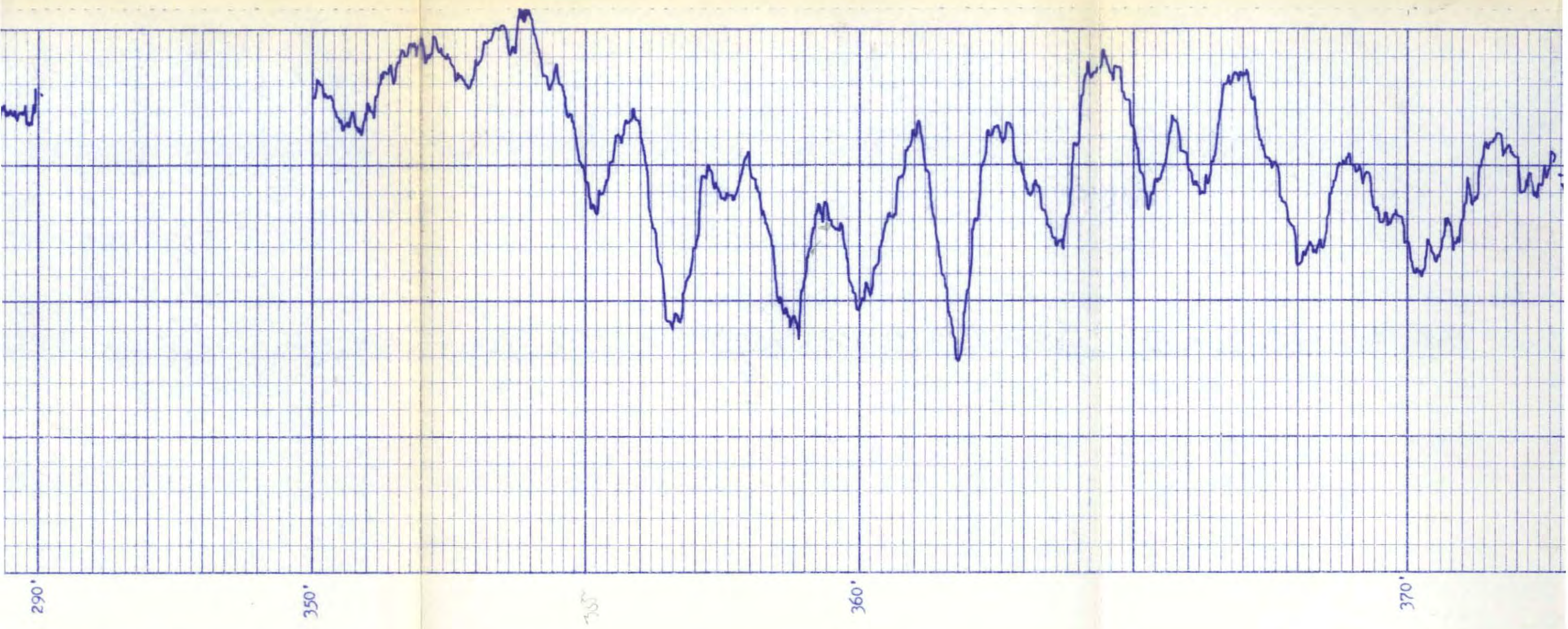
250'

260'

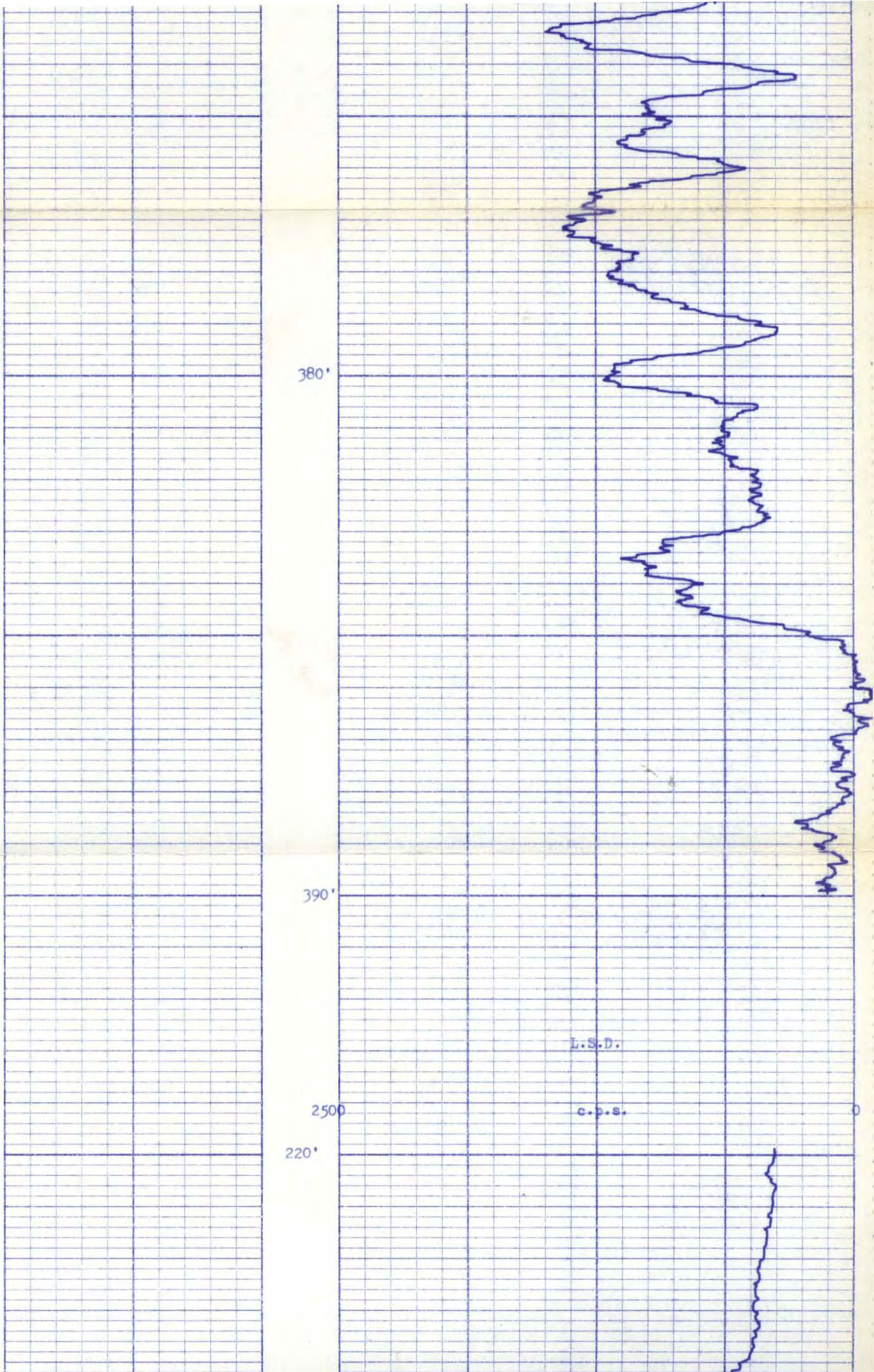












380'

390'

2500

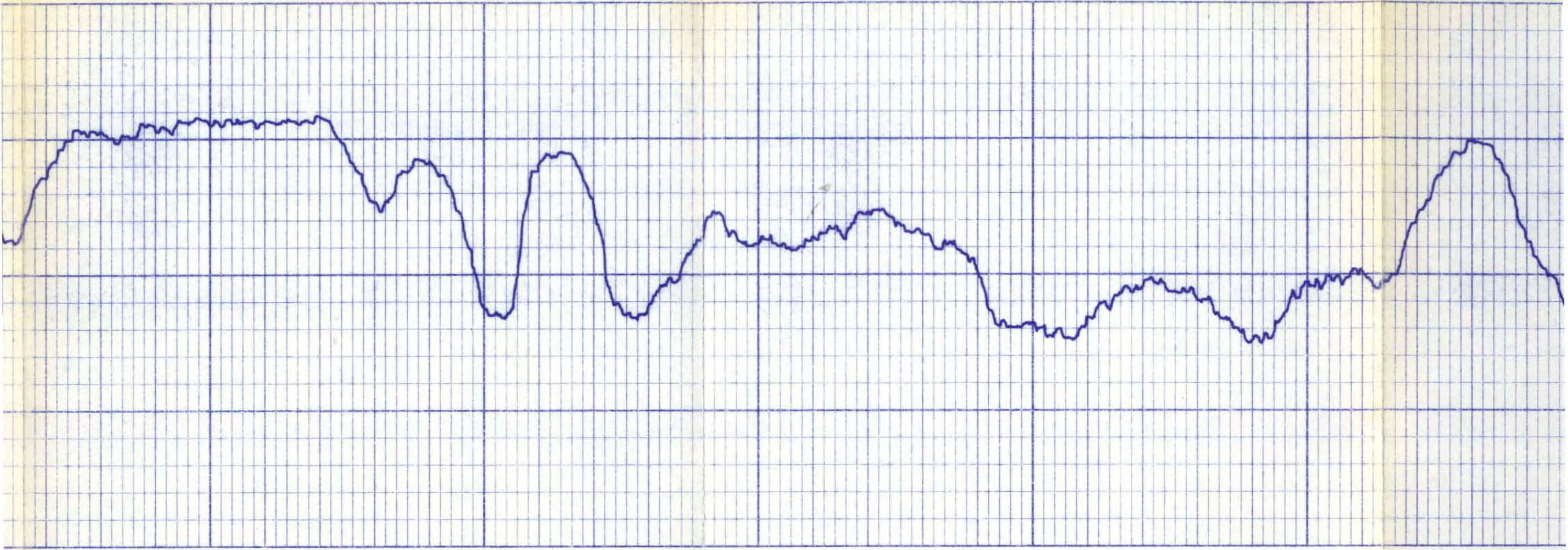
220'

L.S.D.

C.P.S.

0



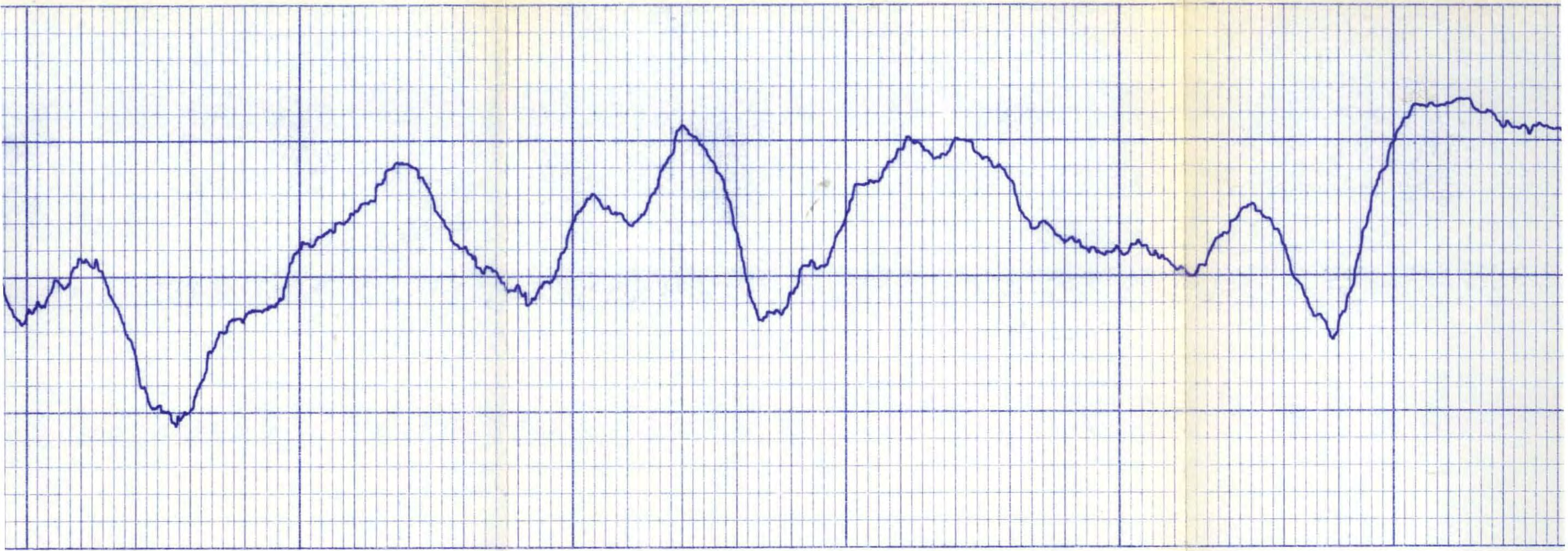


230'

240'

250'



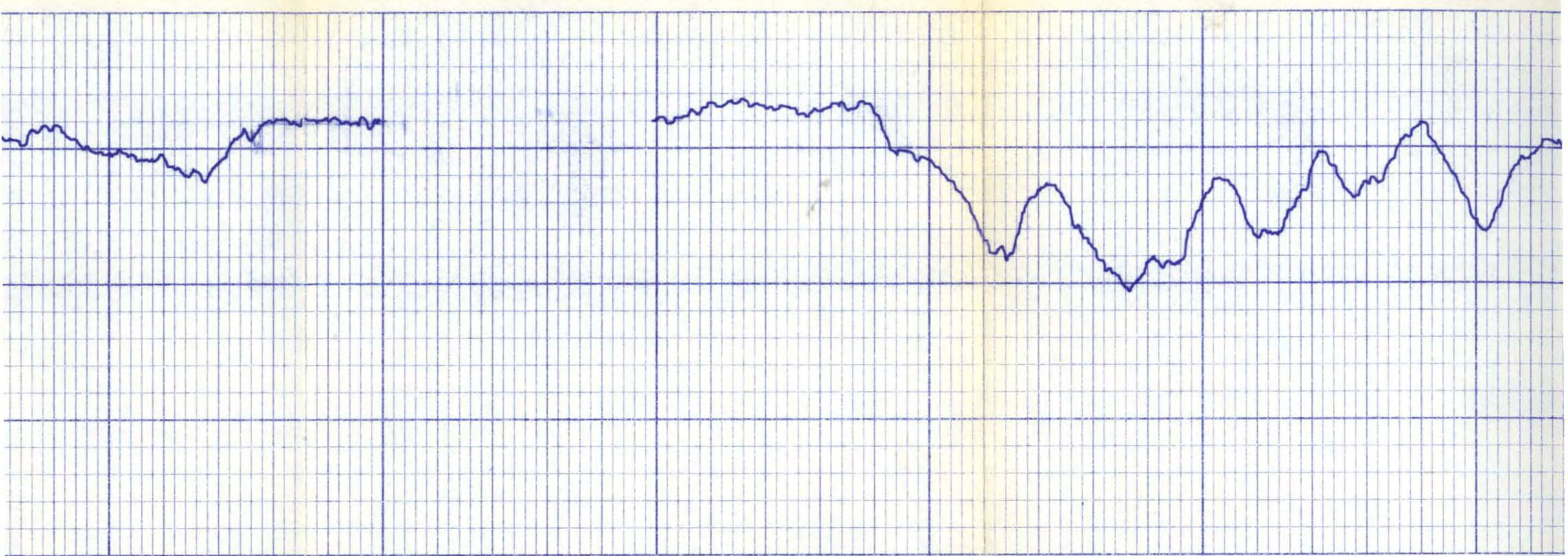


260'

270'

280'





290'

350'

360'



