



DENTAL LOGS.
 254018 H.P.D.
 10053

COMPANY CYPRES ANVIL

BOREHOLE # 7 77 2 logged thru drill stem.

STATE British Columbia. COUNTRY Canada.

Permanent Datum Ground level. Elev Ft.

Log measured from Ground level zero Ft. above P.D.

Drilling measured from Ground level zero Ft. above P.D.

Run No	Depth Scale	I	2' : 1"		
Date		18th July 1977			
First Reading		300'			
Last Reading		215'			
Interval Measured		85'			
Casing BPB					
Casing Driller					
Depth Reached		300.6'			
Bottom Driller		302'			
Mud Nature		Natural			
S.G.	Viscosity				
Bit Size 1		4 3/4" to 118'	to		to
2		3 7/8" to T.P.	to		to
3		to	to		to
Casing Size 1		to	to		to
2		to	to		to
Rm @ Meas Temp.		@	@		@
Rmf @ Meas Temp.		@	@		@
Rmc @ Meas Temp.		@	@		@
BHT					
Operating Time		3 hrs.			
Truck No.		27 / 4			
Recorded By		A. Anthony.			
Witness					

fold here

REMARKS

Changes in Mud Type or Additional Samples

Date	Sample No.	Depth - Driller	Type Fluid in Hole	Dens.	Visc.	ph.	Fluid Loss ml	Source of Sample	Scale Changes			
									Scale Up Hole	Scale Down	Other	
								@	@	@		
								@	@	@		
								@	@	@		
								@	@	@		
								@	@	@		
								@	@	@		

Log	From	To	Speed Ft./min.	T.C.	Norm. Stroke No.	Source Number
Gamma	300'	215'	7.5	2	OUT	2
H.R.D.	300'	215'	7.5	1	OUT	2
J.S.D.	300'	215'	7.5	1	OUT	2

No Caliper details logged thru drill stem.

DEPTHS

2' - 1"	
---------	--

GAMMA RAY

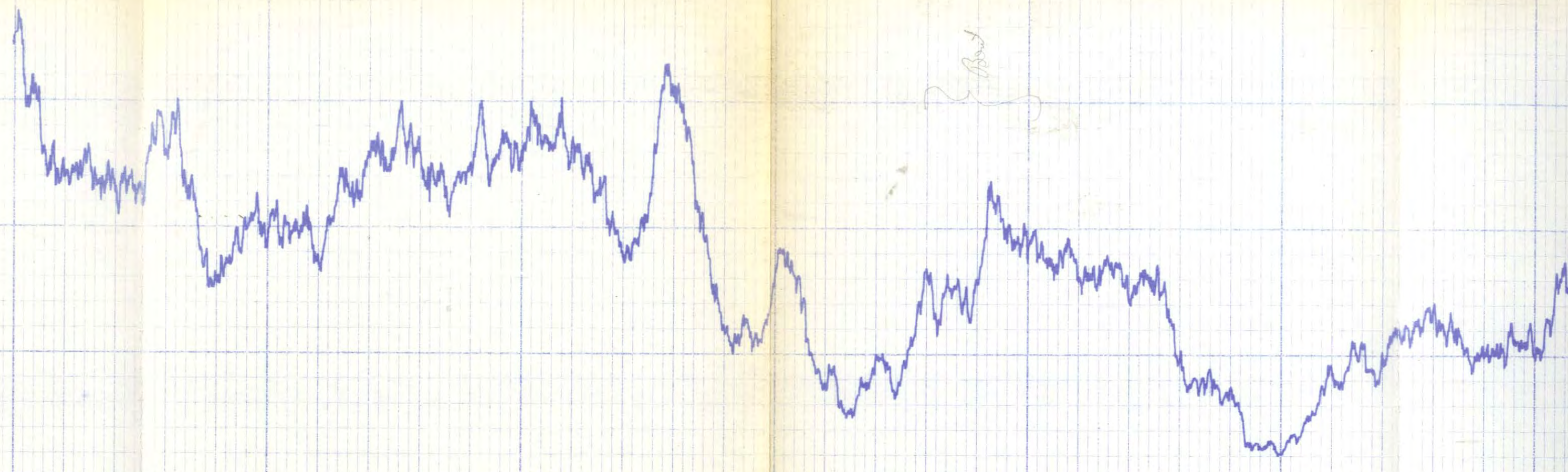
c.p.s.

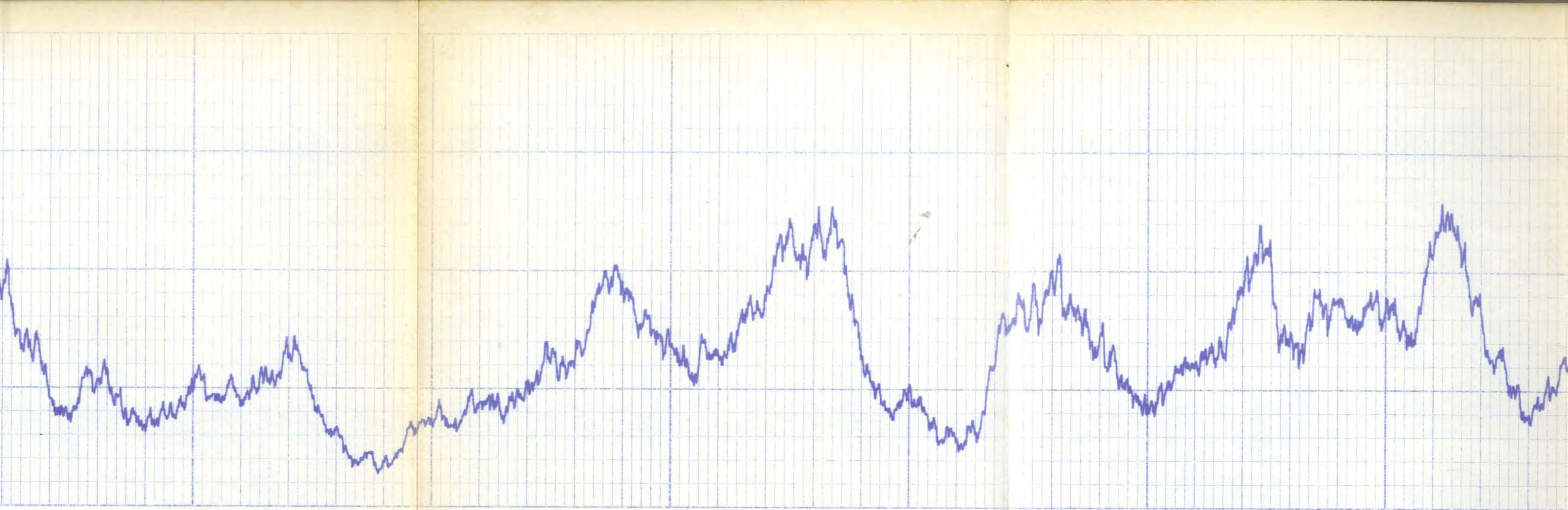
215'

220'

240'

Band

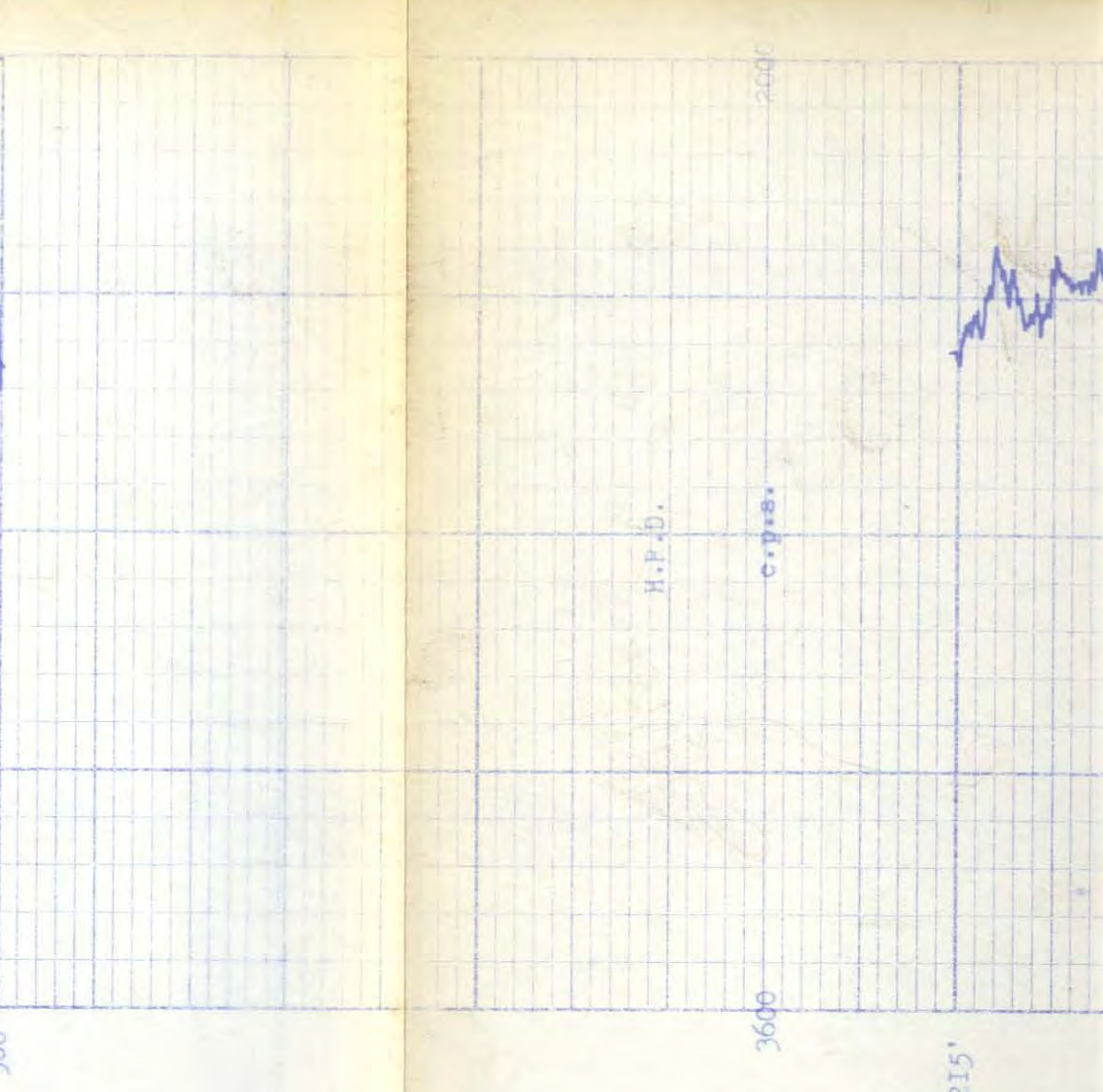
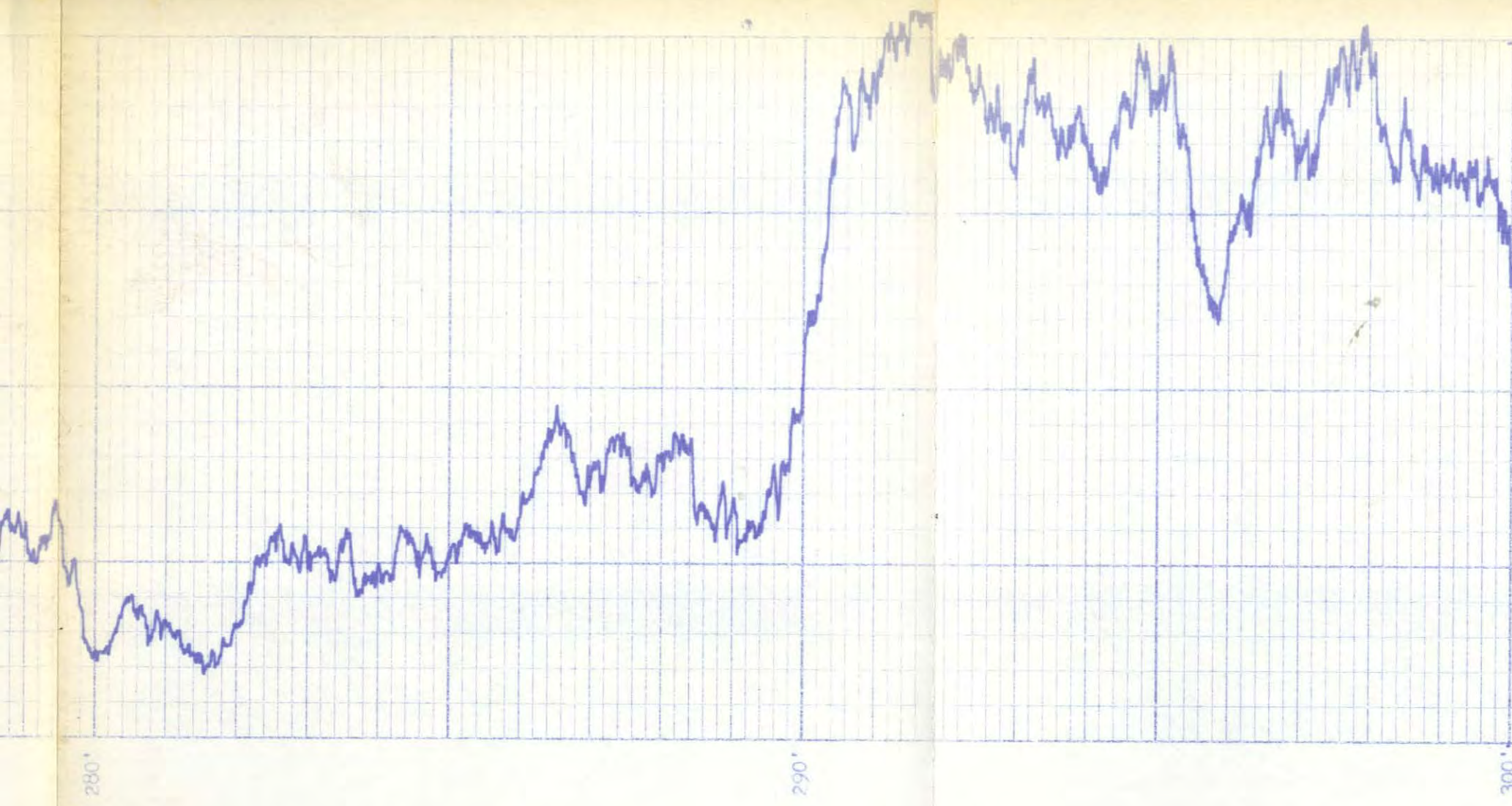


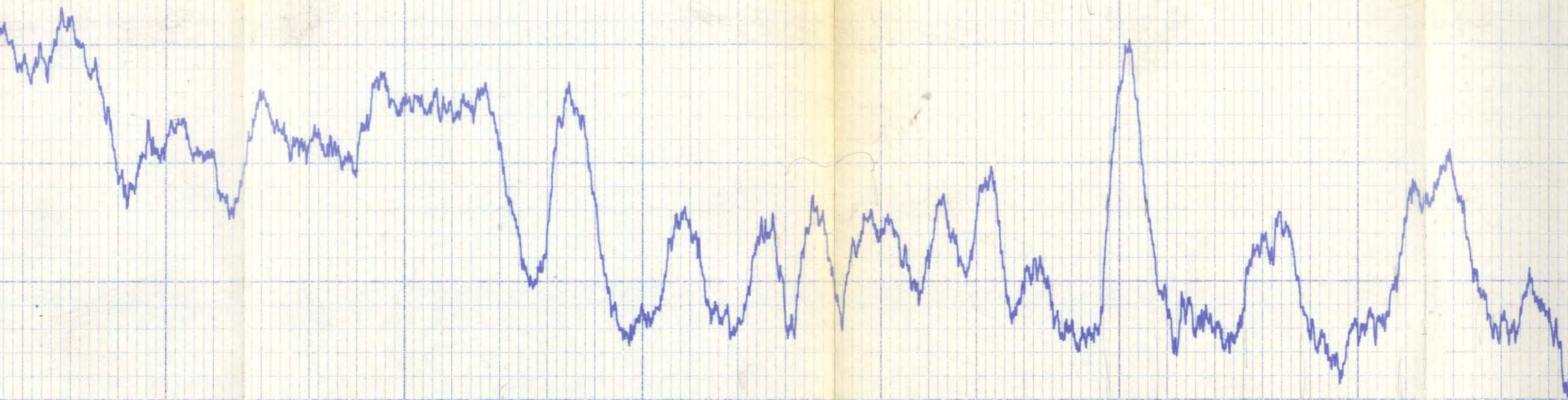


250'

260'

270'

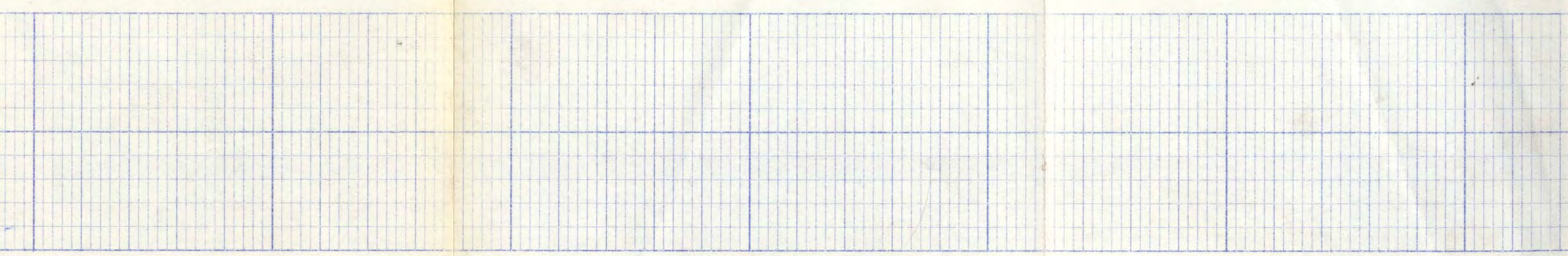
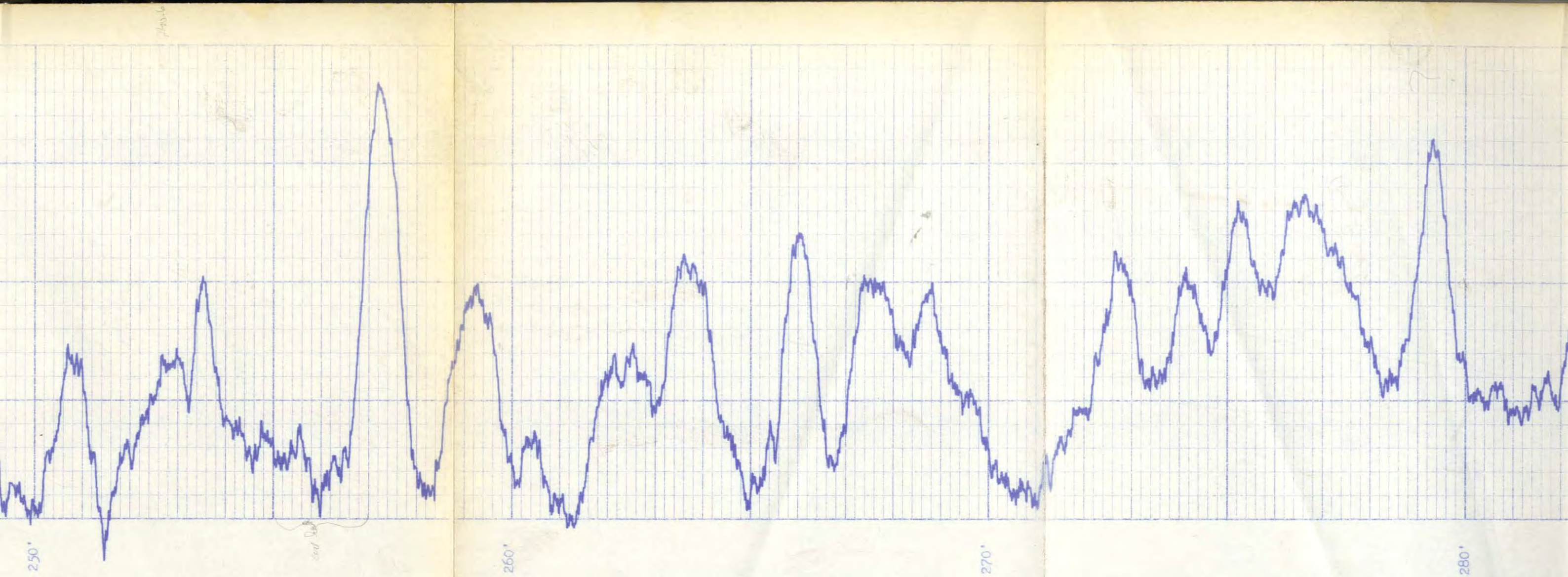


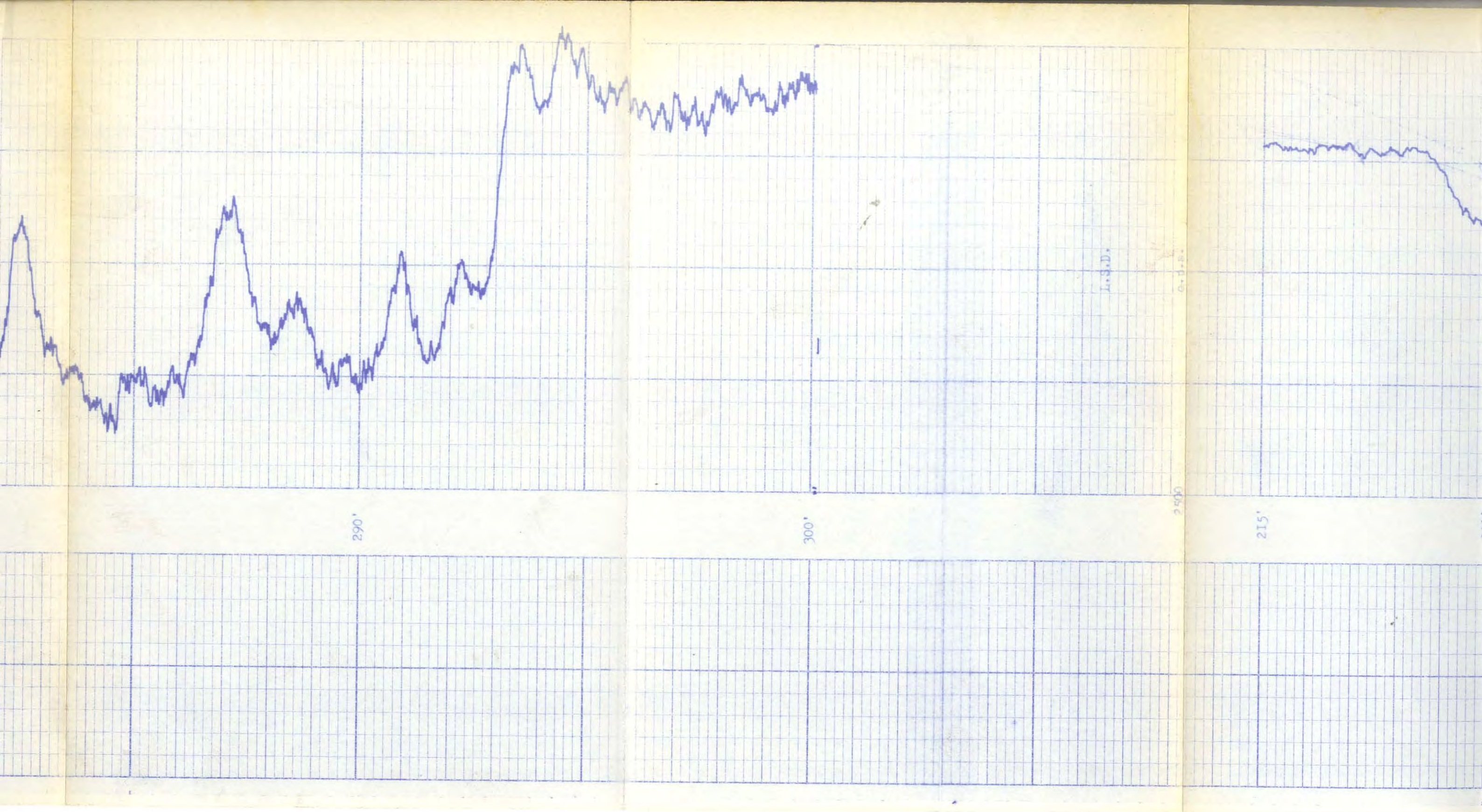


220'

230'

240'





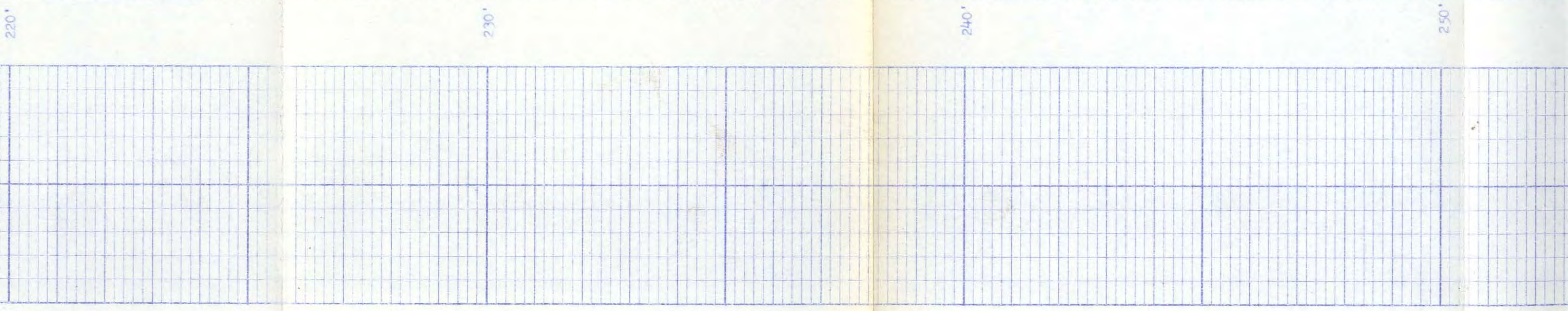
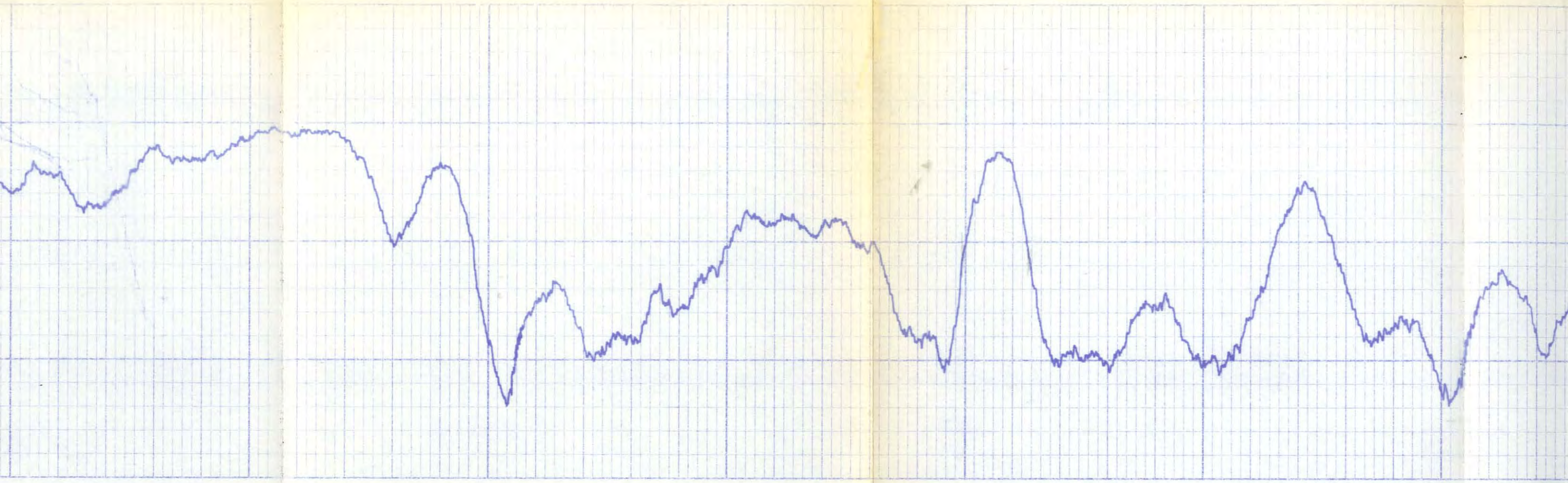
290'

300'

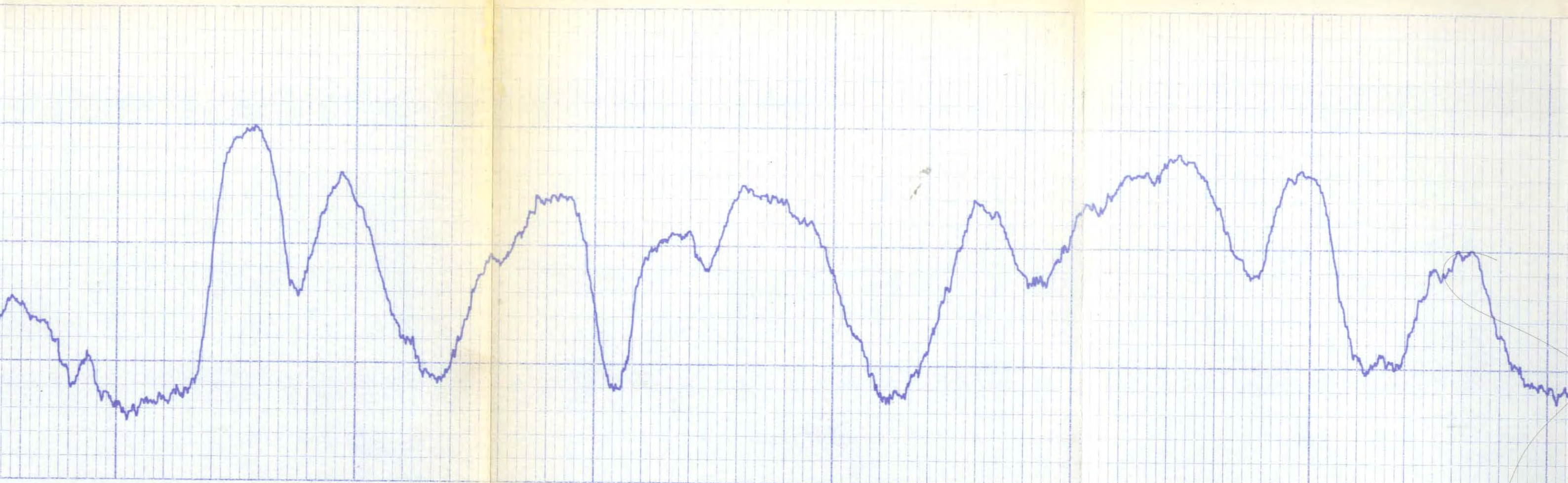
215'

L.S.D.

G.D.S.



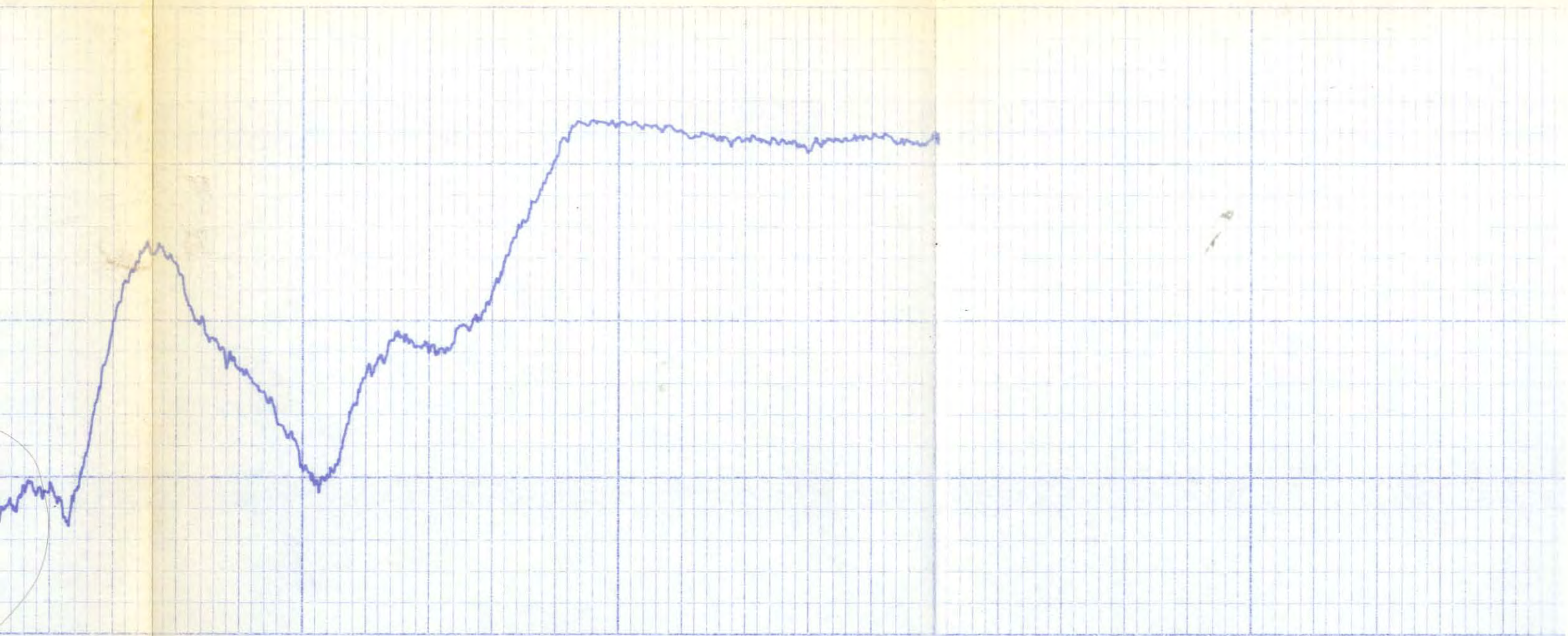
246.5
241.3
5.2



260

270

280



290'

300'