

PROPERTY EXAMINATION - PORT HARDY AREACLAIMS - Lake, Jean 1-4

Owned by Pat Russell of Vancouver

The five claims are located at the west end of Nahwitti Lake, 20 miles east of Port Hardy. A forestry access road linking Holberg with Port Hardy passes within one quarter mile of the principal showings, which are located on the Lake claim on the north shore of Nahwitti Lake.

GENERAL:

The workings consist of three trenches and three shallow pits distributed along 630 feet of a southerly dipping limestone gabbro contact. Mineralization occurs as fine grained chalcopyrite, sphalerite, molybdenite replacements in the limestone and as coarse grained chalcopyrite, bornite magnetite, pyrite and pyrrhotite replacements of mafic phenocrysts in the epidotized ground mass of an altered volcanic rock.

Although the deposit seems uniformly controlled by the contact, with fracture plane mineralization of minor importance as an ore control, the exact relation to the contact varies in the different exposures, numbered T 1 -8 on the plan.

In T 2 the best grade appears at least 12 feet north of the contact, which is not exposed. In T 3 and T 7 the deposit lies on the contact with replacement in both the limestone and the volcanics. Pits T 4, T 5 and T 6 do not delimit the width of grade but serve to indicate the probability that mineralization is continuous throughout the 630 foot length. The outcrop on the east end at T 8 consists of a weakly mineralized volcanic skarn zone. Its relation to the contact is not known but it appears to be some distance from it.

Apparently prospecting has not resulted in any evidence of a possible easterly extension to the zone but such a possibility exists on the west end.

General 'cont'd:-

--- An area of about 125 square feet of lead-zinc replacement in the limestone on the knoll appears to be typical of the small isolated pods in the general area.

At the west end of the contact zone a fault was postulated to explain the apparent offset of the contact which appears to steepen to the east.

MAGNETOMETER SURVEY:

A sharp A-3 magnetometer was employed to assess the possibilities of the covered section of the contact. The distribution of the magnetite however, does not seem a reliable guide to the presence of Copper. Although an anomalous high of 2,000 gammas was established over the ore in T 3, such was not the case in T 2.

The high, north of T 7, is difficult to explain in the light of the local outcrops but may represent an epidote-magnetite skarn at depth, which is apparently a common regional feature.

In general, anomalous highs of 900 to 1300 gammas against a background of 5230 gammas persist along the contact area.

ECONOMIC POSSIBILITIES:

Sampling indicated a true width of from 8 to 18 feet, allowing for dip correction along 630 feet, grading 1.29 to 1.4% copper and 0.8% oz./ton silver. With expected additional values in zinc and molybdenum and possibly cobalt, and assuming dimensions of 630 x 12 x 500 feet, there seems a good chance of proving an orebody of 300,000 tons with a gross value of \$12.00 per ton, neglecting the cobalt.

A programme of packsack drilling and some additional trenching would go far towards proving or disproving this possibility.

Economic Possibilities - cont'd:-

The proximity to the imminent deep sea port facilities at Port Hardy and the convenient location on the Port Hardy - Holberg road, enhance this property considerably.

Respectfully submitted

Hu Naylor

Geologist

December 17, 1965

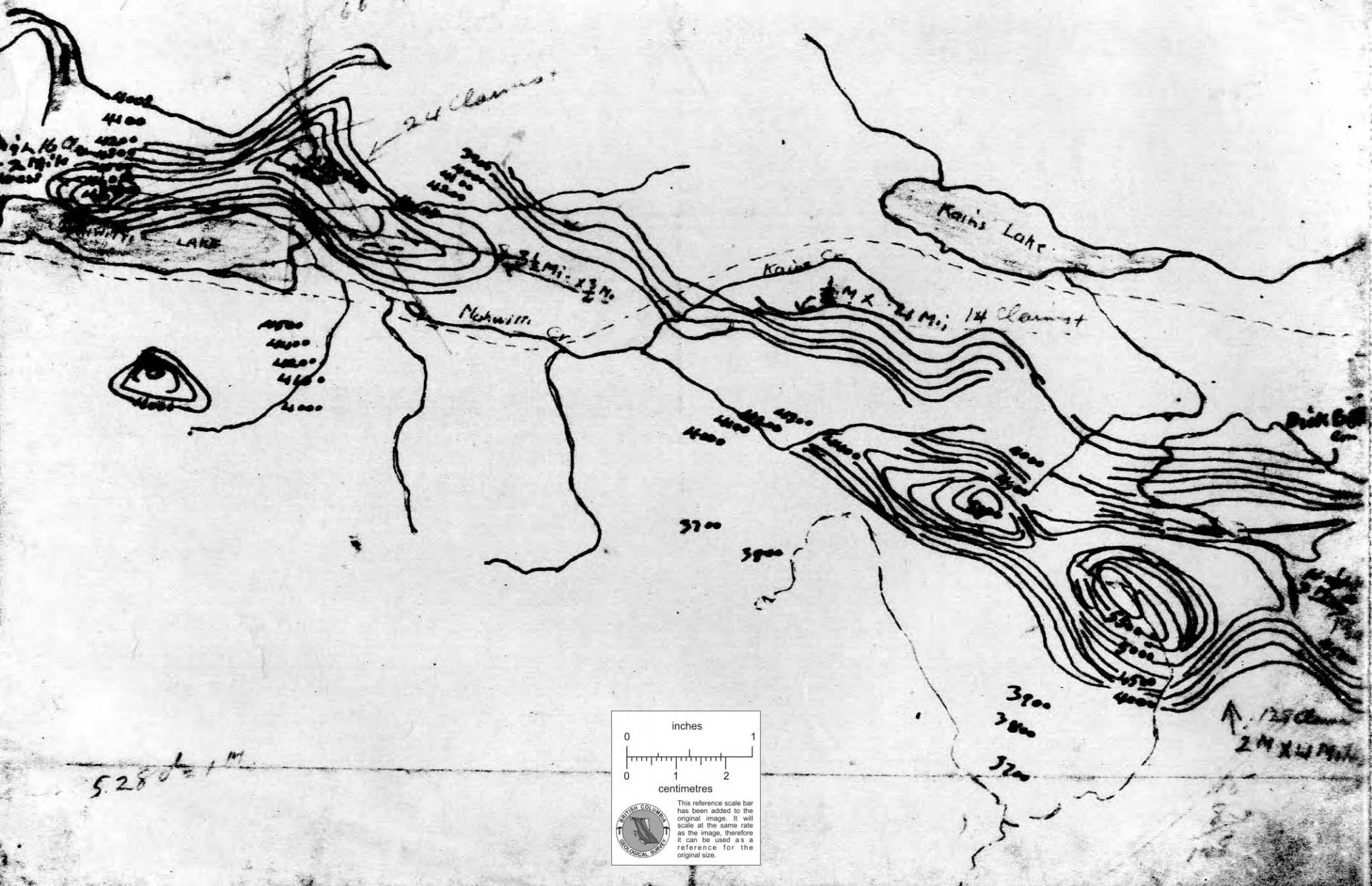


claims to 1 mile

16-78  
24-50  
14-28  
12-24  
66-117

# Aeromagnetic Survey

## Nahwitti Lake Area Scale 1" = 1 Mile.




inches

0 1

centimetres

0 1 2


 This reference scale bar has been added to the original image. It will scale at the same rate as the image, therefore it can be used as a reference for the original size.

5.280 = 1 M.

1/25 Claims  
2 Mi x 1/4 Mi.