

810363

GEOCHEMICAL SURVEY
OF THE
IKE AND D'ARCY CLAIM GROUPS
Similkameen Mining Division, B.C.
DYNASTY EXPLORATIONS LIMITED
By: W.D. Tompson Sept. 1972

COPY

GEOCHEMICAL SURVEY
OF THE
IKE AND D'ARCY CLAIM GROUPS

Similkameen Mining Division, B.C.

By:

W. D. TOMPSON

DYNASTY EXPLORATIONS LIMITED

September 7, 1972

TABLE OF CONTENTS

<u>Subject</u>	<u>Page</u>
Property and Location	1
Ownership	2
Geology	2
Geochemical Survey	2
Costs	3
Certificate	4

ILLUSTRATIONS

Figure 1	Location map of Ike and D'Arcy Claim Groups
Figure 2	Claim map of Ike and D'Arcy Claim Groups
Figure 3	Map showing copper content of soil, Ike and D'Arcy Claim Groups, Similkameen Mining Division, B.C.

DYNASTY EXPLORATIONS LIMITED

330 MARINE BUILDING
355 BURRARD STREET
VANCOUVER 1, B. C.

GEOCHEMICAL SURVEY OF THE IKE AND D'ARCY CLAIM GROUPS

Similkameen Mining Division, B.C.

PROPERTY AND LOCATION

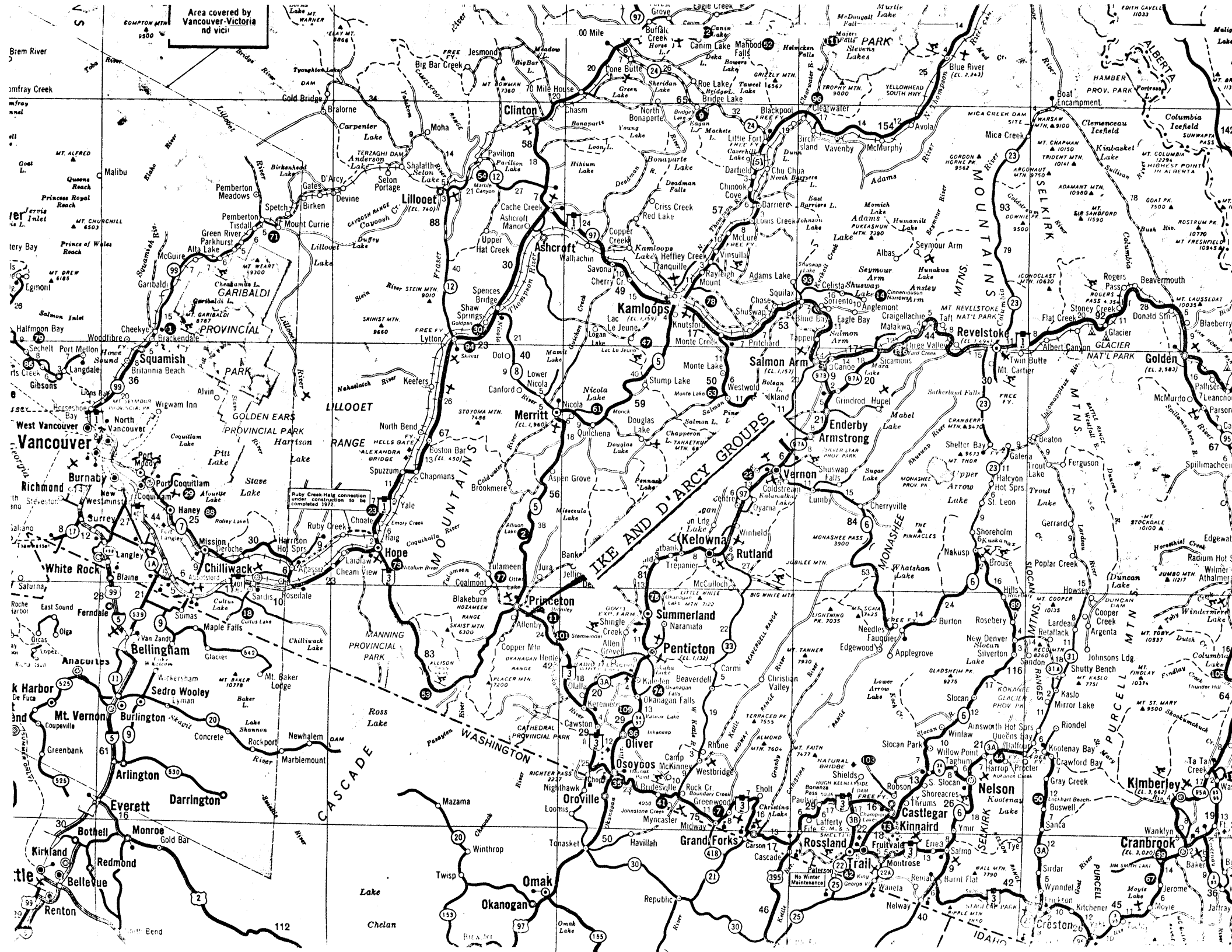
The Ike and D'Arcy claim groups lie about 5 miles east of Princeton, B.C. on the south side of Similkameen River and adjoin B.C. Highway 3. Access to the claims is via unimproved logging and prospecting roads from Highway 3 (Figure 1).

The Ike Group consists of 40 claims:

<u>Claim Name</u>	<u>Record Nos.</u>
A 1 - A 12	22576-22587
B 7 - B 12	22656-22661
H 1 - H 10	34500-34509
D 7 - D 10	34476-34479
E 7 - E 10	34506-345-9
Ike 1 - Ike 4	23457-23460

There are 40 claims in the D'Arcy Group:

<u>Claim Name</u>	<u>Record Nos.</u>
B 1 - B 6	22650-22655
C 1 - C 12	23461-23472
D 1 - D 6	34470-34475
E 1 - E 6	34500-34505
M 1 - M 10	36560-36569



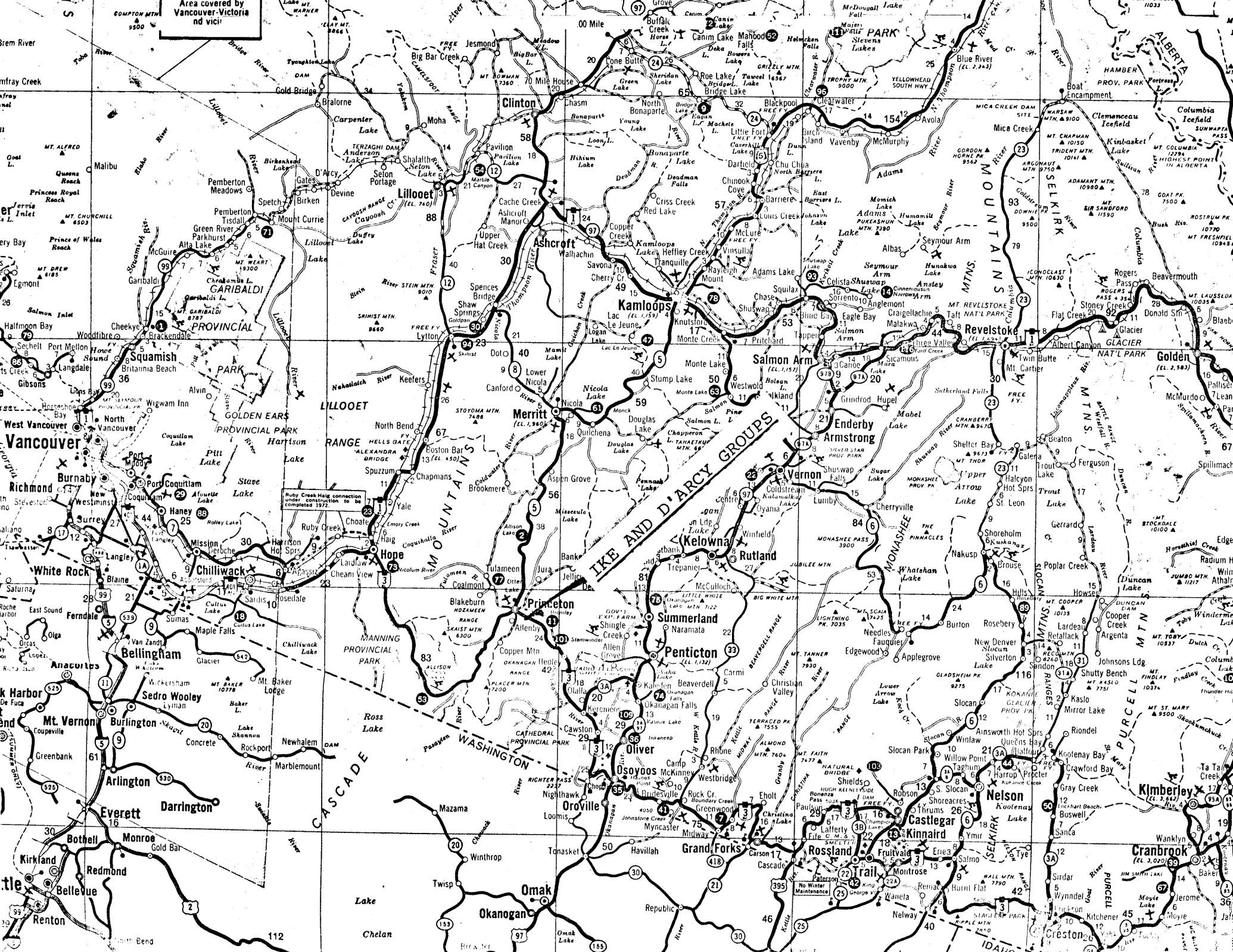
Area covered by Vancouver-Victoria and vicinity

PROVINCIAL PARK

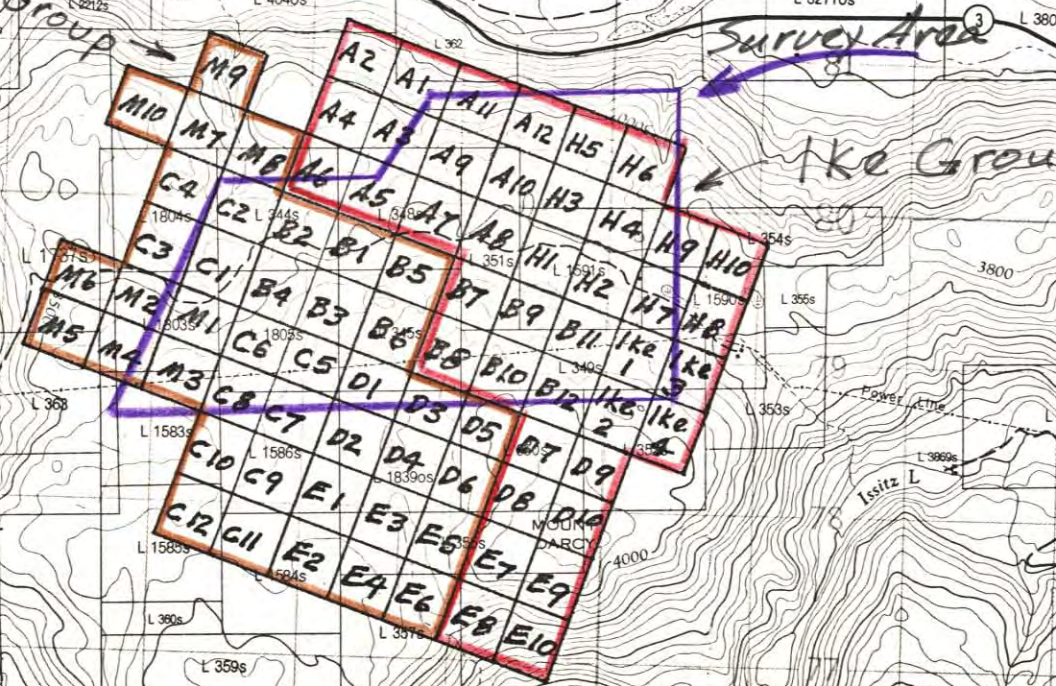
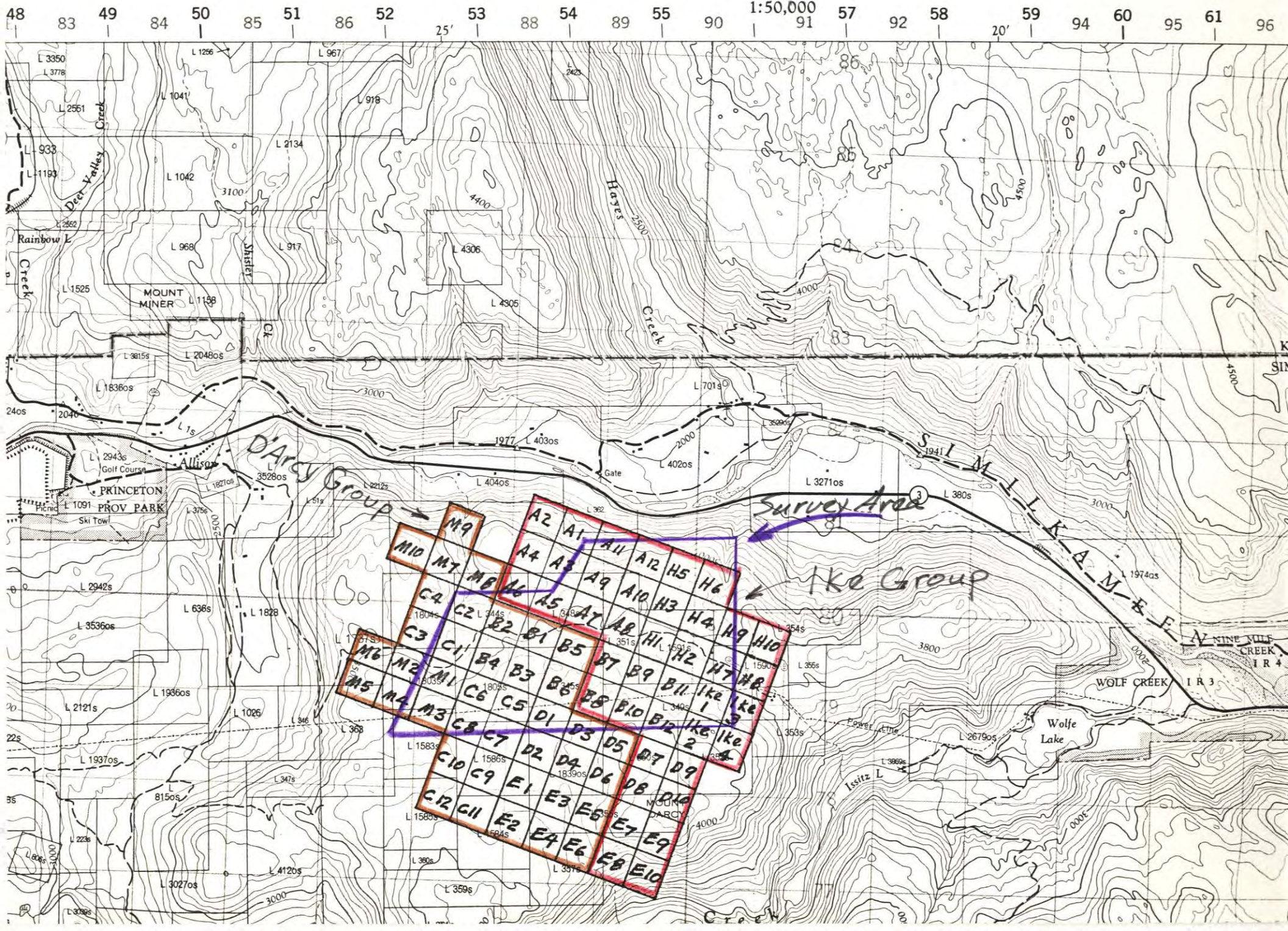
THE ICKE AND D'ARCY GROUPS

SELKIRK MOUNTAINS

PURCELL MOUNTAINS



AL MAP



OWNERSHIP

Arcan Mining and Smelting Ltd. (N.P.L.), a Vancouver-based company with offices at 433-355 Burrard Street, Vancouver, B.C. owns the Ike and D'Arcy claim groups.

GEOLOGY

Bedrock is exposed in less than 5 percent of the area. The higher parts of the claim groups lie in terrain which has relatively gentle topographic relief, and here bedrock is covered by a thin mantle of glacial and glacio-fluvial material and by locally derived detritus. The slopes which face north, toward Similkameen River, are steep and are covered by talus and have growths of fir and pine.

The area is underlain by Jurassic and post-Jurassic(?) granite and granodiorite which intrudes andesite and andesite porphyry of the Nicola group which are Upper Triassic in age.

Chalcopyrite occurs in veinlets and as disseminated grains in coarse-grained granite near the contact with the Nicola volcanic rocks. K-spar and sericite facies alteration of the granite are prominent. Some bornite and minor chalcocite occur and pseudomorphs of goethite after chalcopyrite were observed.

GEOCHEMICAL SURVEY

Base lines were cut for control in the geochemical survey and the area was covered by grid lines spaced at 400 ft. intervals. Pickets were placed at 100 ft. intervals on the grid lines (Figure 3).

Sampling cuts were made with a garden mattock and soil samples were collected from the top of the "B" soil horizon. Samples were placed in manilla sample envelopes for shipment to the

laboratory. Analyses were done by Min-En Laboratories Ltd., Vancouver, B.C.

Mesh size of sample	-80
Analytical method	Atomic Absorption plus colorimetric
Digestion	HClO ₄ + HNO ₃

Geochemical assay values range from 5 to 2800 ppm copper. Assay values were plotted and contoured (Figure 3) at scale one inch equal 400 feet.

COSTS

The sampling program was conducted during June and July, 1972.

Men employed in the soil sampling were: S. Powney, S. McCloy, W. Tompson, A. Sargeant and T. Skonseng.

Distribution of costs of the program are as follows:

Labour, including contracts	\$2,774
Geochemical analyses	2,080
Supervision, geological	780
Room, board, field expenses	324
Sampling supplies, tools, etc.	200
Administration, communications, payroll expense	<u>655</u>
TOTAL	\$6,813

Respectfully submitted,

September 7, 1972

Willard D. Tompson

CERTIFICATE

I, WILLARD D. TOMPSON, of West Vancouver, British Columbia, do hereby certify:

1. That I am a geologist, residing at 3950 Bayridge Court, West Vancouver, British Columbia.
2. That I have practiced my profession for 13 years and am familiar with geochemical survey methods.
3. That I supervised the geochemical survey of the Ike and D'Arcy Groups herein described.
4. That I have no monetary interest in the claims or in the company which owns the claims, nor do I expect to receive any.

Willard D. Tompson,
Geologist

Fig.3 - Map showing copper content
of Soil - Ike & D'Arcy
Claim Groups