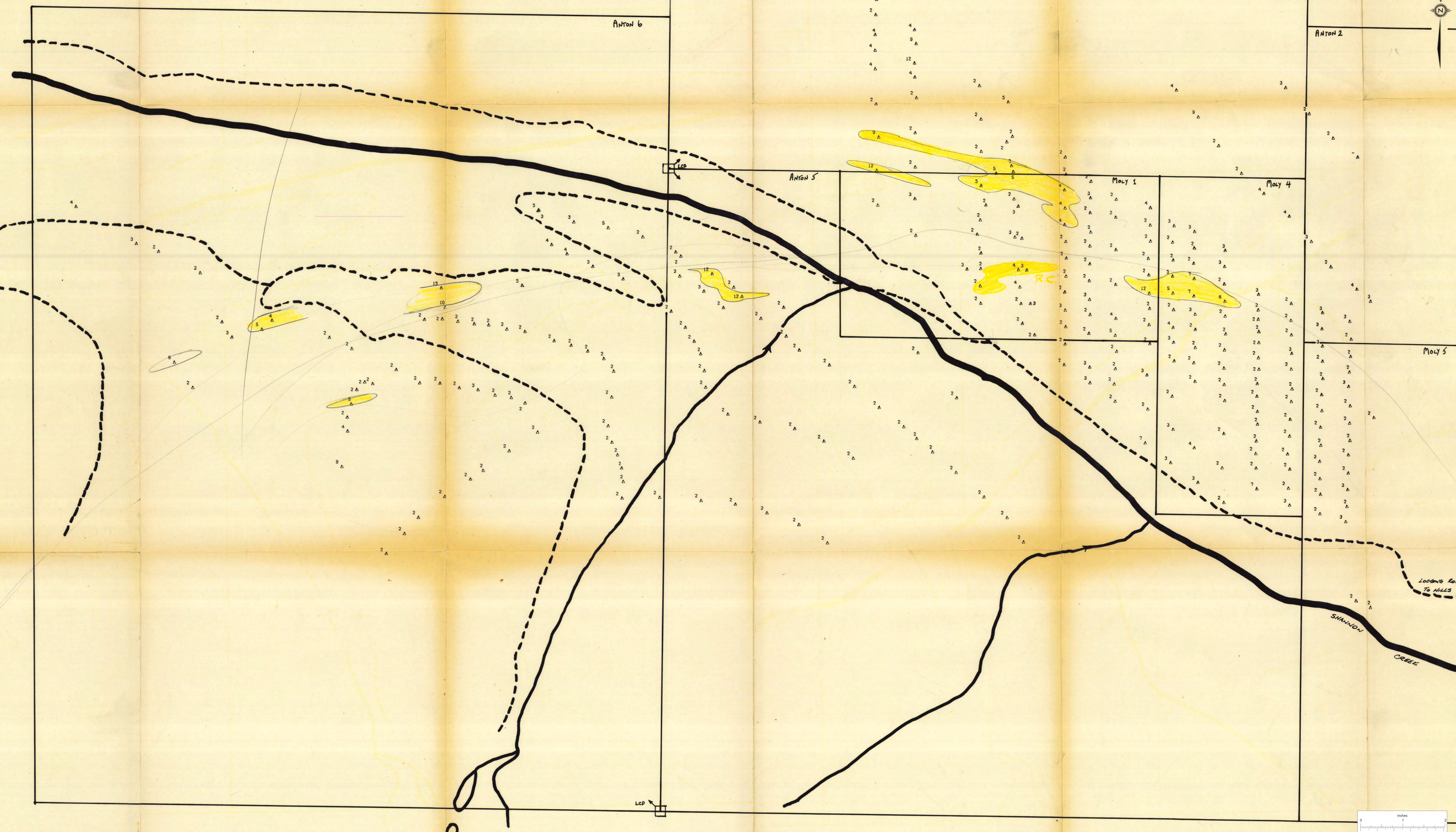


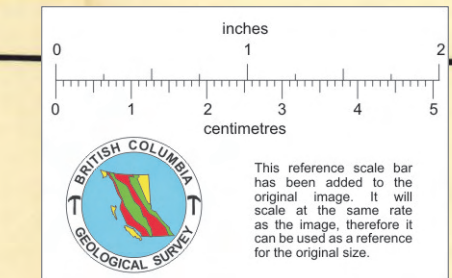
Sheet E + 48000 N

Sheet E + 48000 N



Sheet E + 48000 N

W.P. ARMSTRONG, P. ENG.



NOTE: CLAIM BOUNDARIES LOCATED FROM TOPOGRAPHY

NTIS 3, 4

Drawn by:	Traced by:
Revised by:	Revised by:
Date:	Date:

**ANTON CLAIMS GEOCHEMICAL SURVEY**  
MOLYBDENUM IN SOILS, P.P.M.

Scale: 1:5000 Date: JUNE, 1979 Plate: 1 W

810278