

810183

ACME ANALYTICAL LABS - STATISTICAL SUMMARY

October 26, 1988

To: Curragh Resources
Project: not spec.

As requested on October 24, 1988, the following samples taken from files 88-4172 and 88-4527:


PREFIX	SAMPLE NAMES	# SAMPLES
C8R	30L -> 53L	24
	68L -> 69L	2
	71L	1
	76L -> 80L	5
	83L -> 84L	2
	89L -> 95L	7
	102L	1
C8N	5L -> 60L	56
	63L -> 108S	46
	112S -> 132L	21
	134L -> 217L	84
	219L -> 237L	19
	239L -> 253L	15

	TOTAL SOIL SAMPLES	- 283

The preceding samples were combined into one file and the following elements were used for data points:

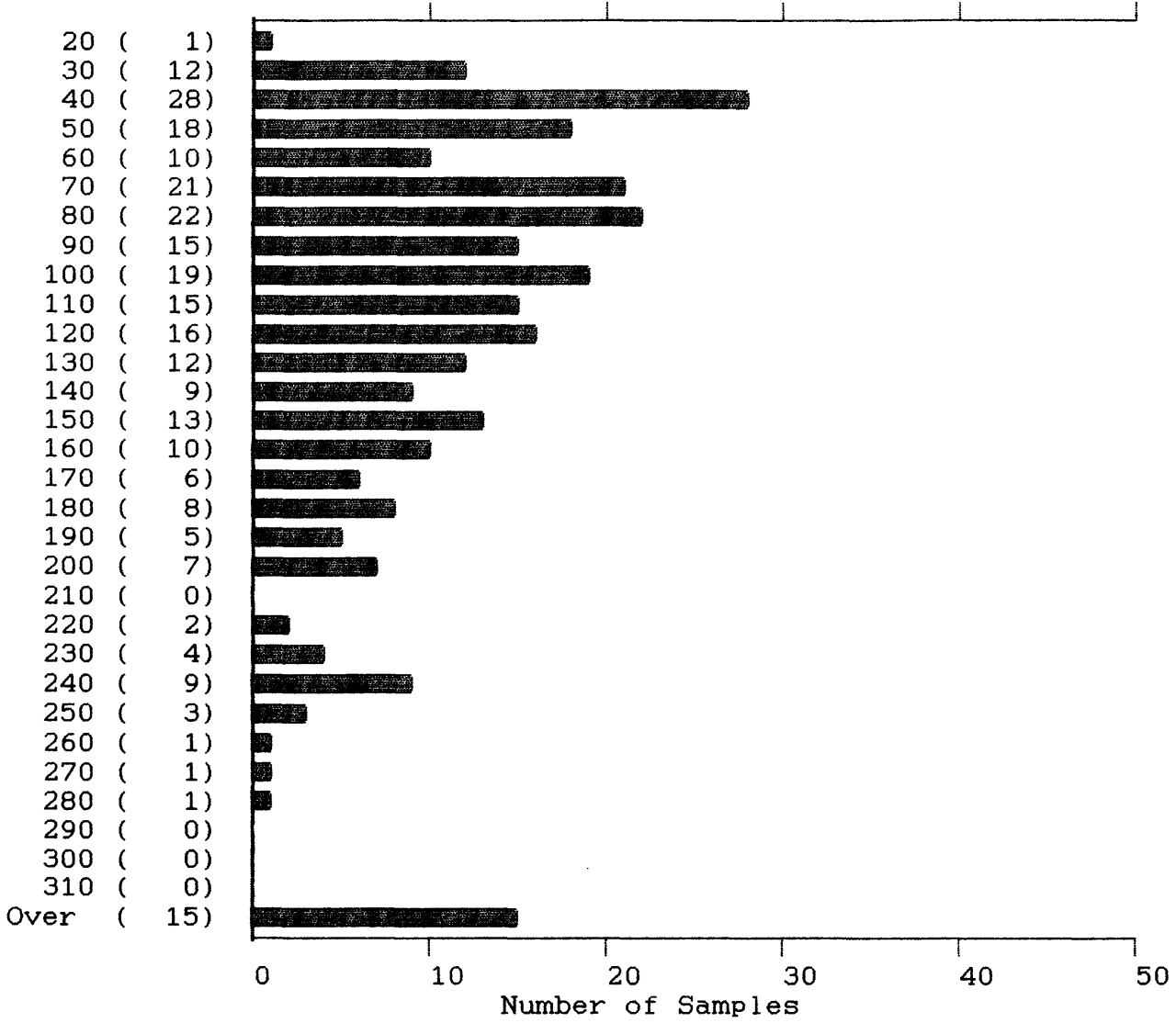
Cu, Pb, Zn, Ag, As, Sb and Au*

Sincerely yours,


Michael Choi

CURRAGH RES. (88-4172+4527)

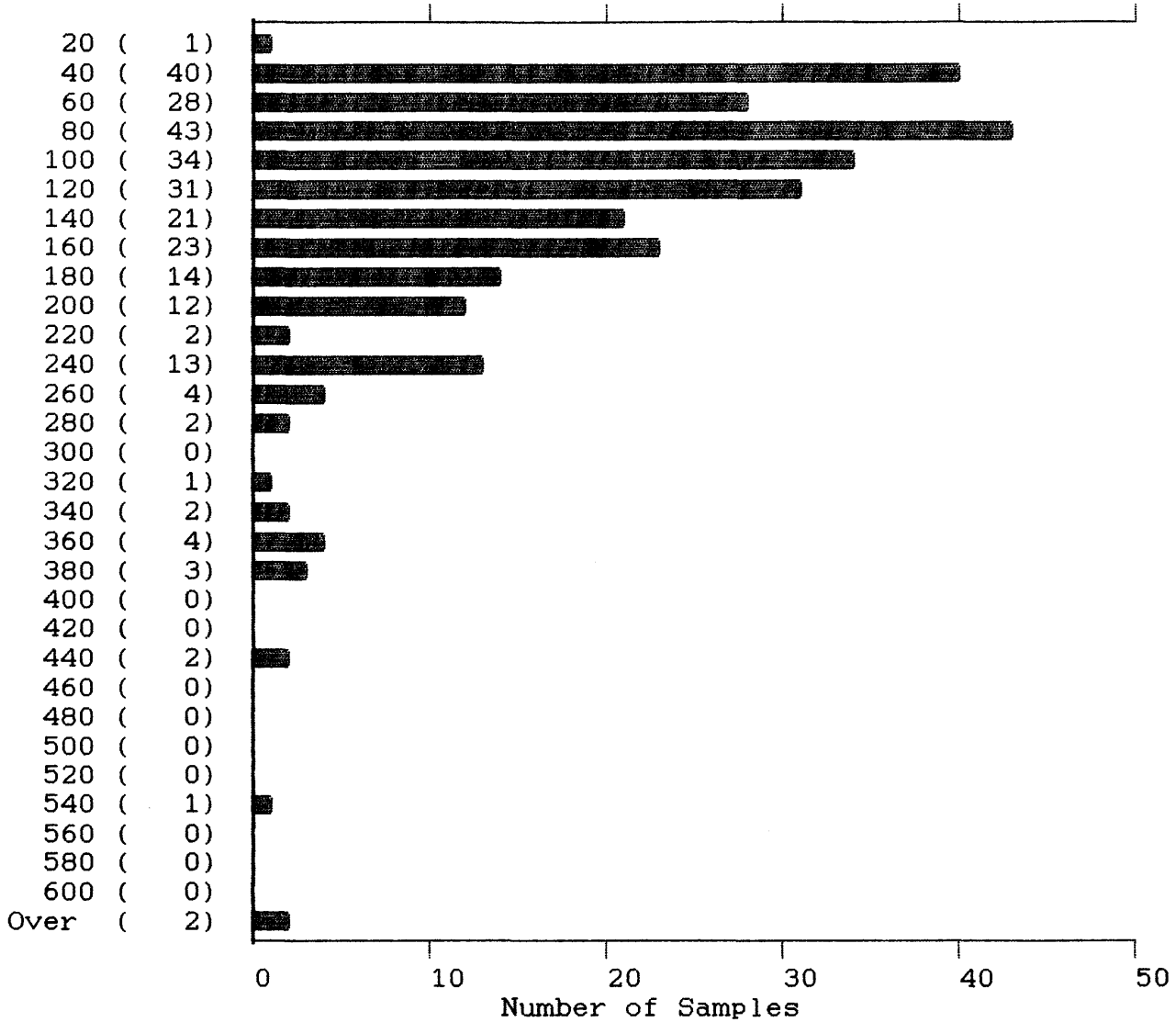
Cu
(PPM)



283 Samples	Maximum: 1264	Mean: 124
	Minimum: 16	Median: 99
		Standard Deviation: 117

CURRAGH RES. (88-4172+4527)

Cu
(PPM)



283 Samples

Maximum: 1264

Mean: 124

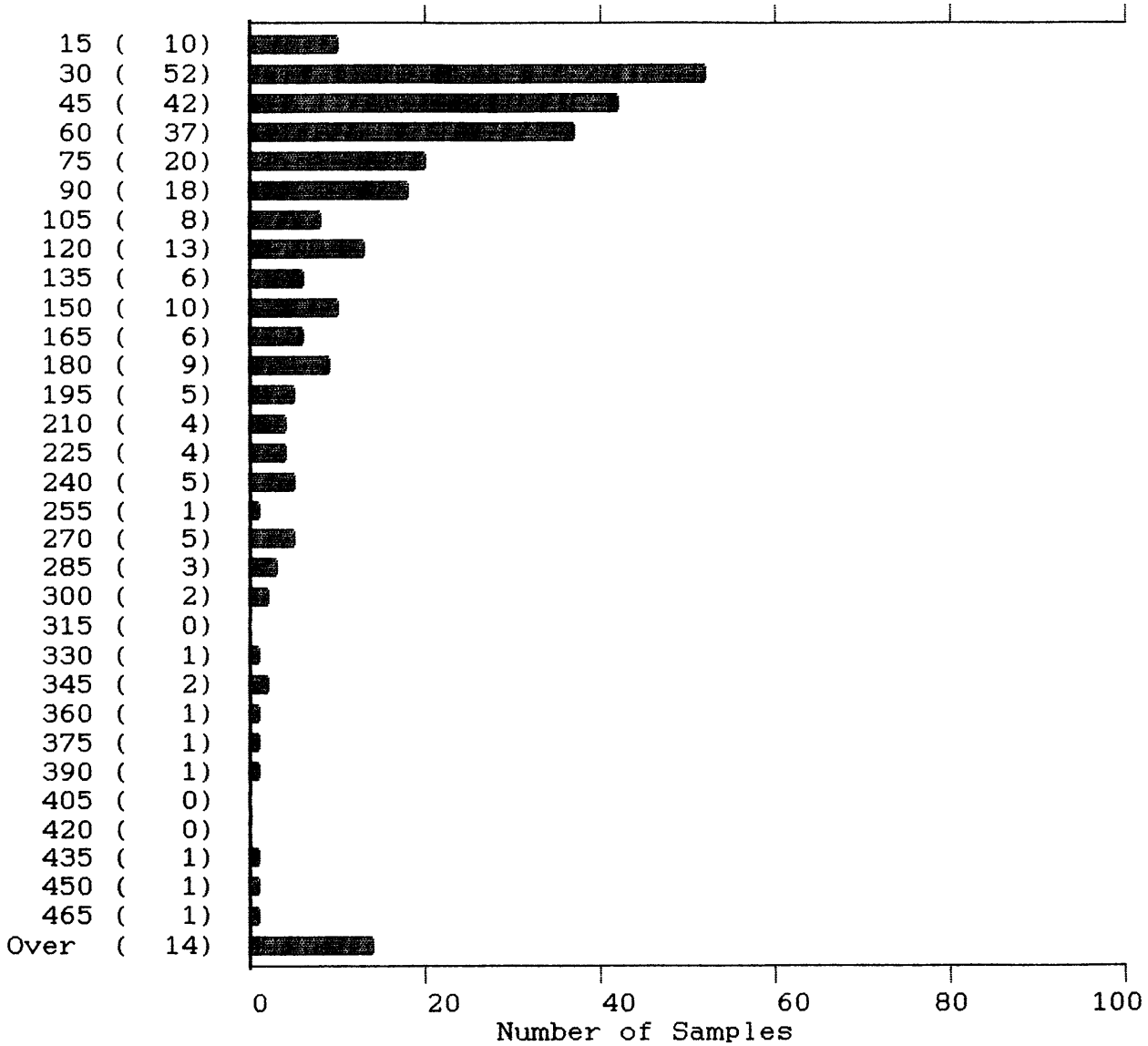
Minimum: 16

Median: 99

Standard Deviation: 117

CURRAGH RES. (88-4172+4527)

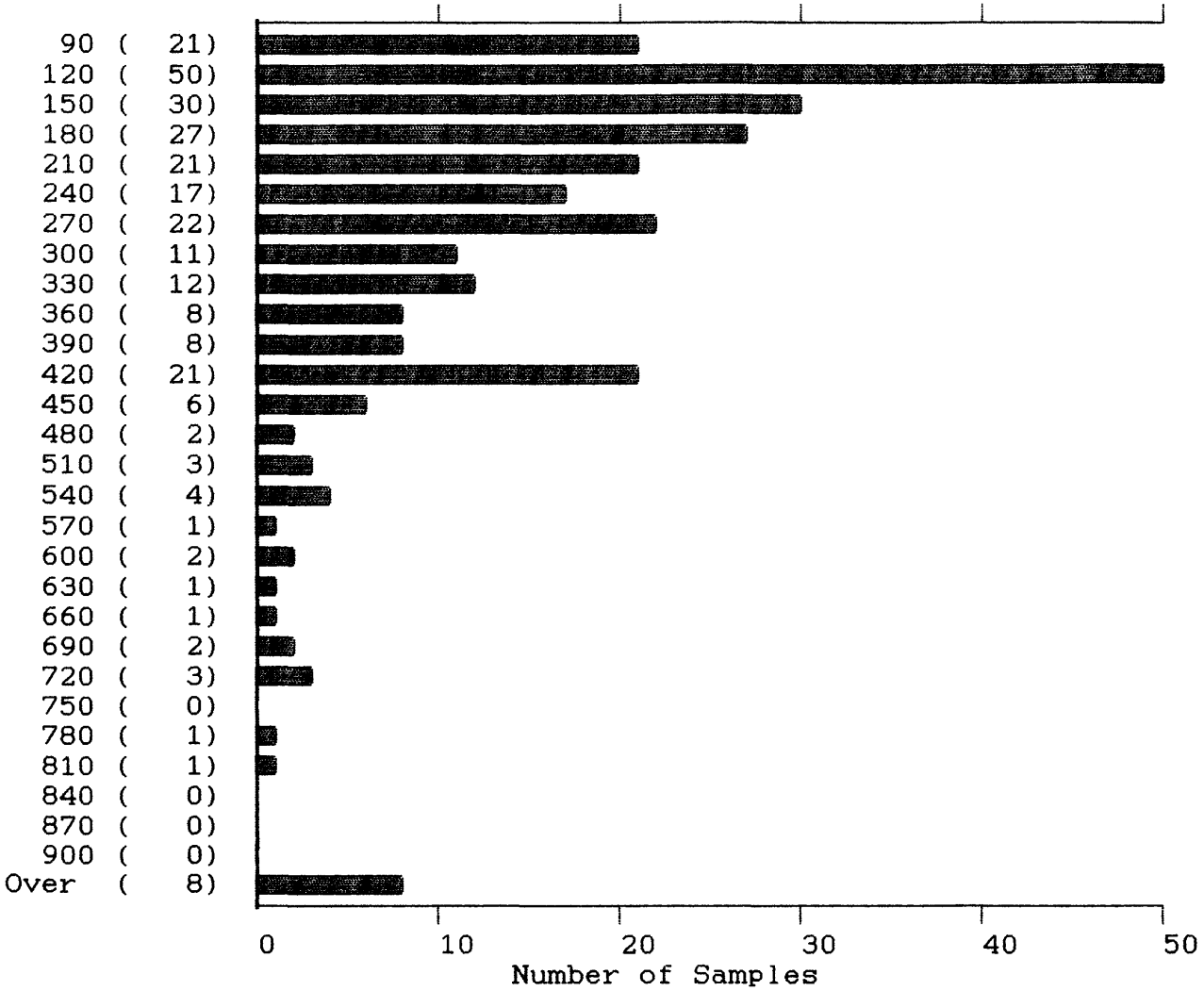
Pb
(PPM)



283 Samples	Maximum: 2459	Mean: 148
	Minimum: 8	Median: 62
		Standard Deviation: 286

CURRAGH RES. (88-4172+4527)

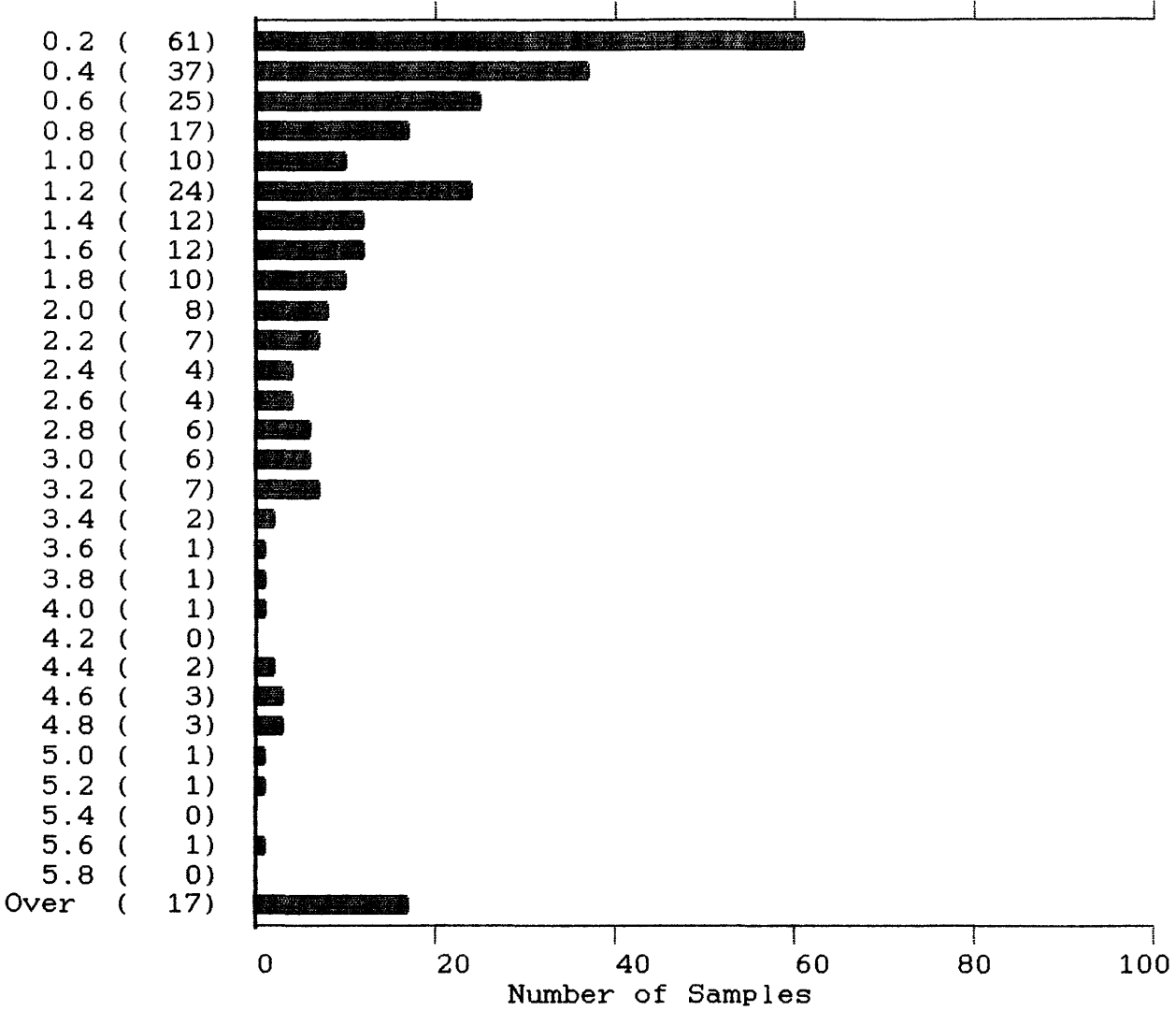
Zn
(PPM)



283 Samples	Maximum: 2521	Mean: 272
	Minimum: 63	Median: 199
		Standard Deviation: 265

CURRAGH RES. (88-4172+4527)

Ag
(PPM)



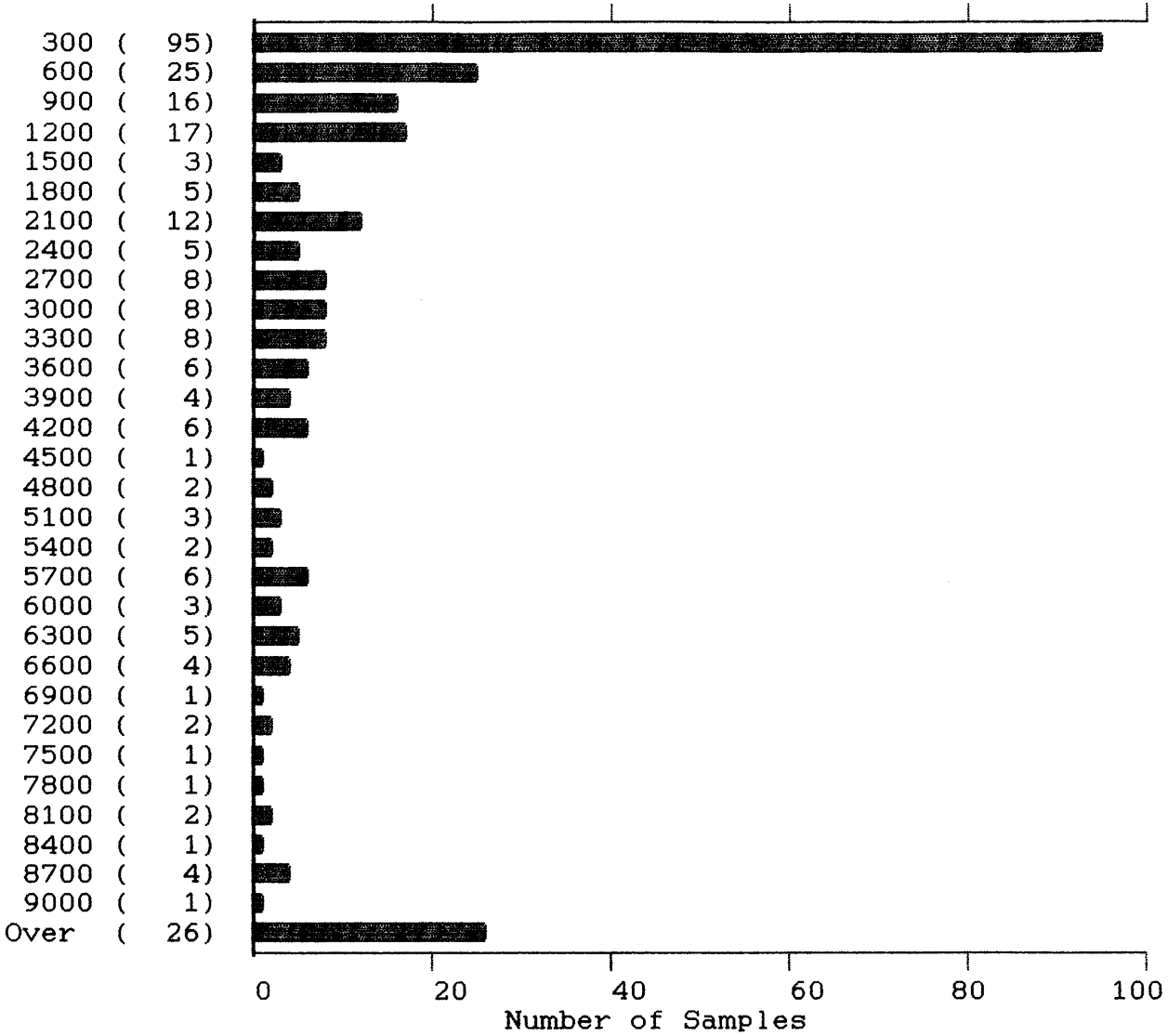
283 Samples

Maximum: 33.1
Minimum: 0.1

Mean: 2.0
Median: 0.9
Standard Deviation: 4.2

CURRAGH RES. (88-4172+4527)

As
(PPM)



283 Samples

Maximum: 20425

Mean: 3043

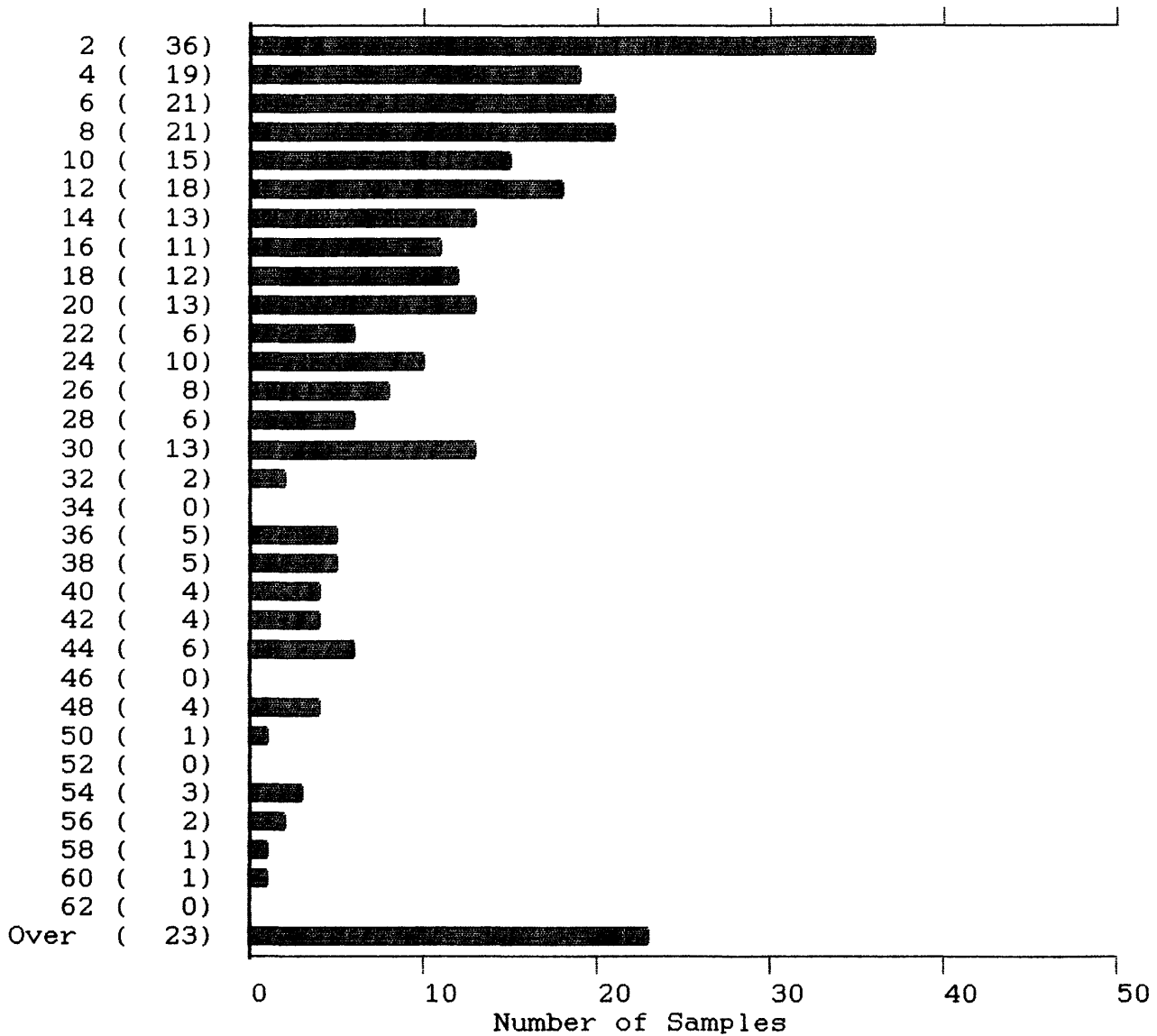
Minimum: 31

Median: 1016

Standard Deviation: 4476

CURRAGH RES. (88-4172+4527)

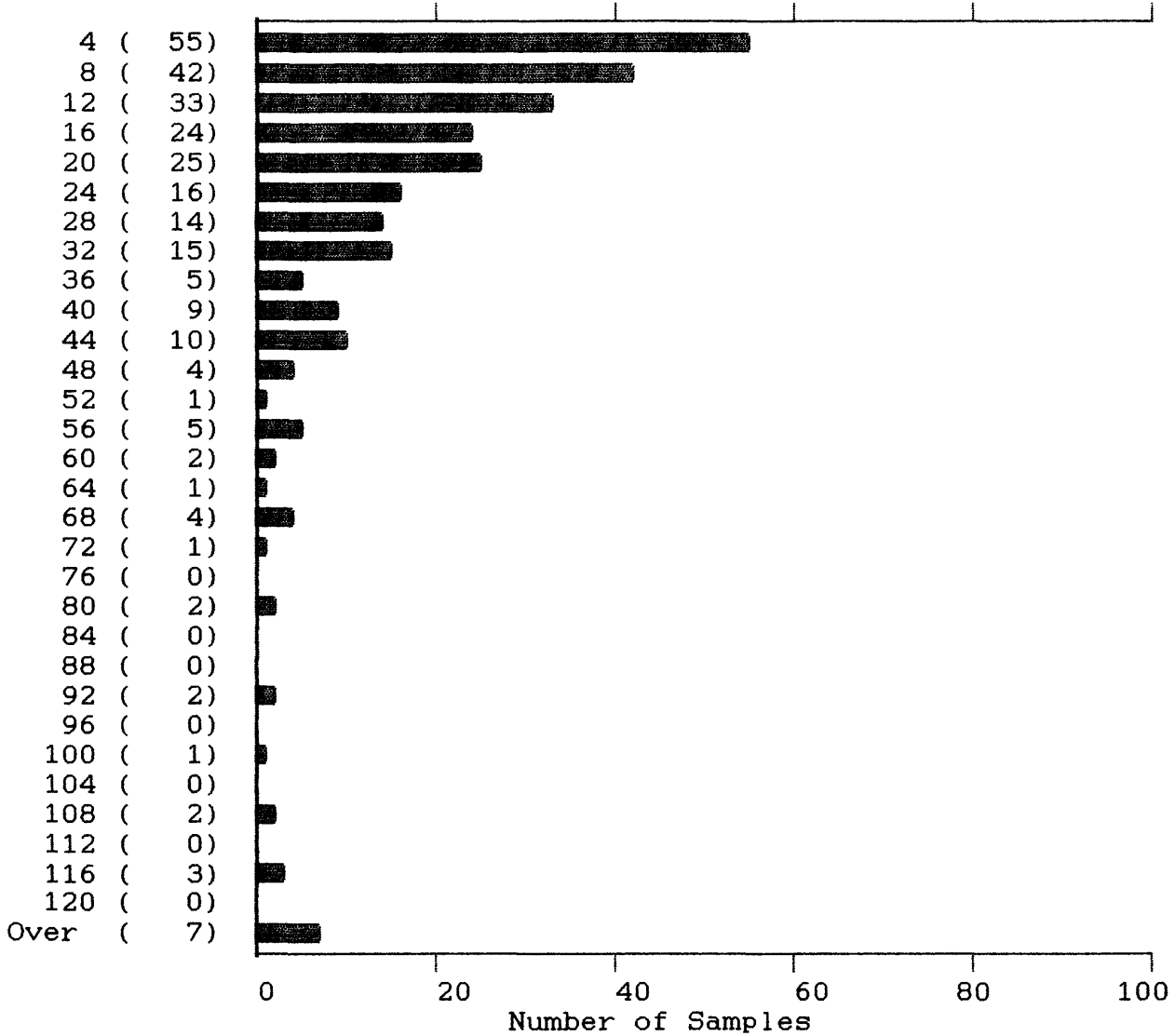
Sb
(PPM)



283 Samples	Maximum:	253	Mean:	24
	Minimum:	2	Median:	14
			Standard Deviation:	31

CURRAGH RES. (88-4172+4527)

Sb
(PPM)



283 Samples

Maximum: 253

Mean: 24

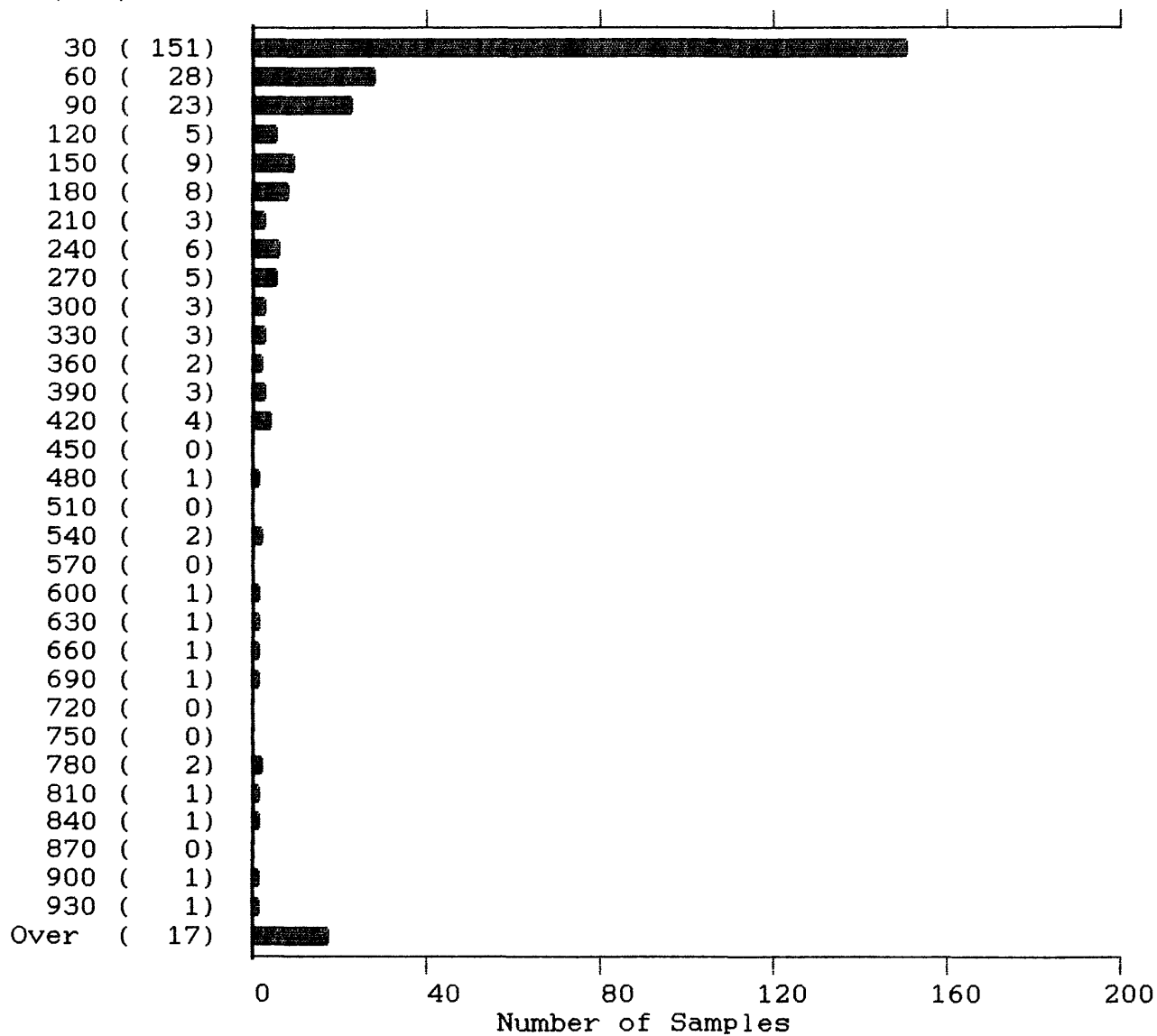
Minimum: 2

Median: 14

Standard Deviation: 31

CURRAGH RES. (88-4172+4527)

Au*
(PPB)



283 Samples

Maximum: 24220

Mean: 303

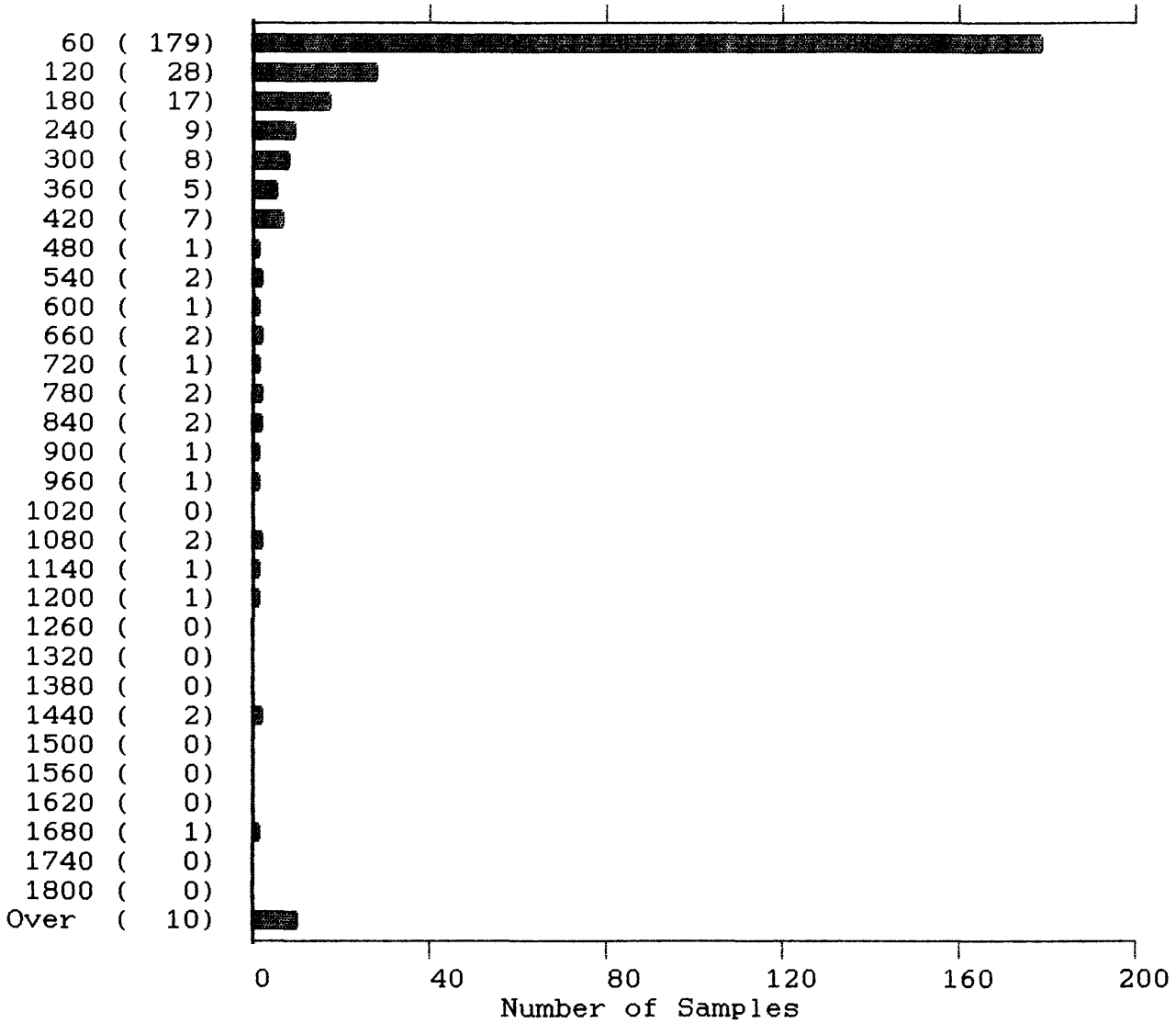
Minimum: 1

Median: 26

Standard Deviation: 1559

CURRAGH RES. (88-4172+4527)

Au*
(PPB)



283 Samples

Maximum: 24220

Mean: 303

Minimum: 1

Median: 26

Standard Deviation: 1559

ACME ANALYTICAL LABS - STATISTICAL SUMMARY

October 26, 1988

To: Curragh Resources
Project : not spec.

As requested on October 24, 1988, the following samples taken from files 88-4172 and 88-4527:

PREFIX	SAMPLE NAMES	# SAMPLES
C8R	30L -> 53L	24
	68L -> 69L	2
	71L	1
	76L -> 80L	5
	83L -> 84L	2
	89L -> 95L	7
	102L	1
C8N	5L -> 60L	56
	63L -> 108S	46
	112S -> 132L	21
	134L -> 217L	84
	219L -> 237L	19
	239L -> 253L	15

TOTAL SOIL SAMPLES	-	283

The preceding samples were combined into one file and the following elements were used for data points:

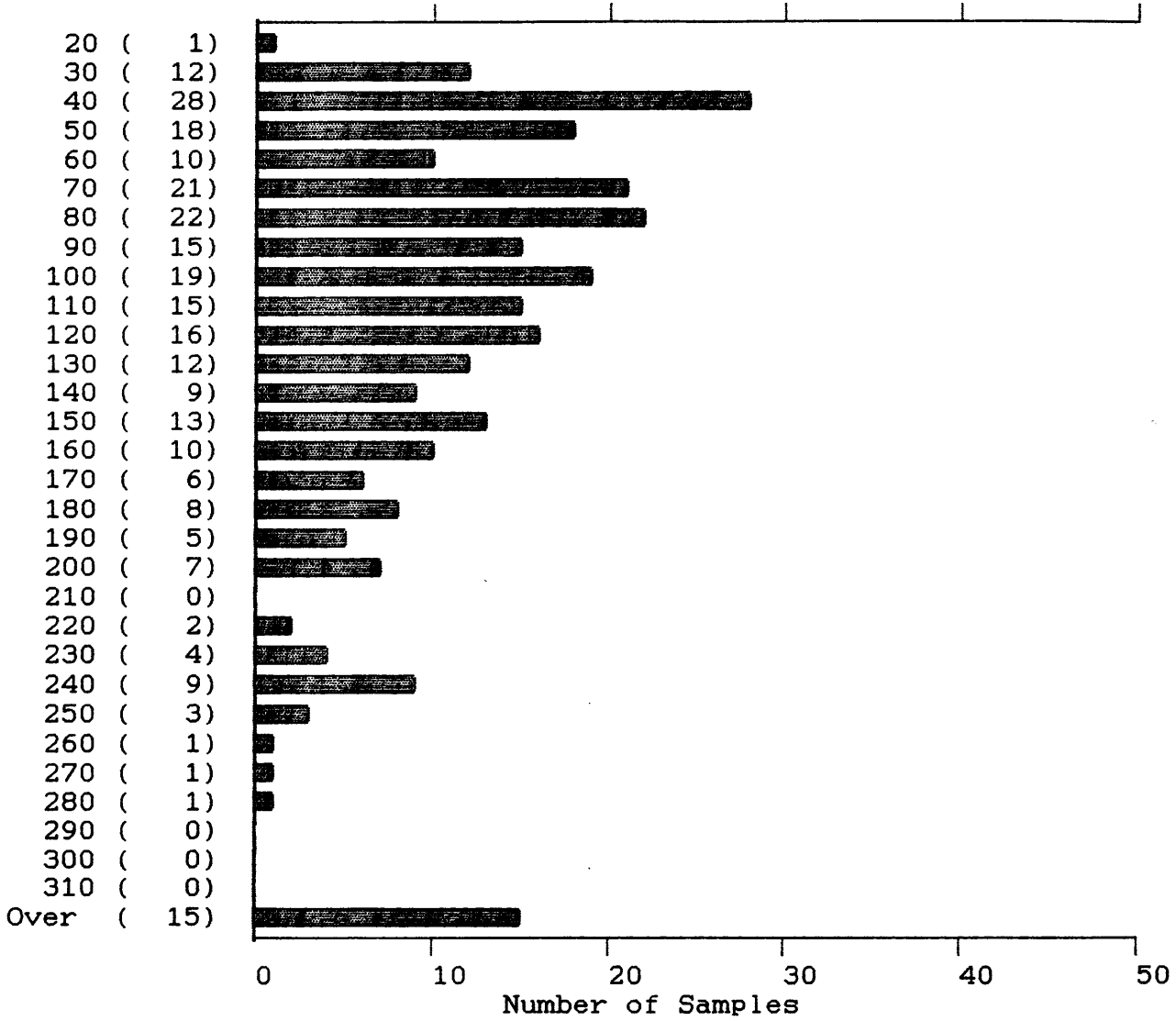
Cu, Pb, Zn, Ag, As, Sb and Au*

Sincerely yours,


Michael Choi

CURRAGH RES. (88-4172+4527)

Cu
(PPM)



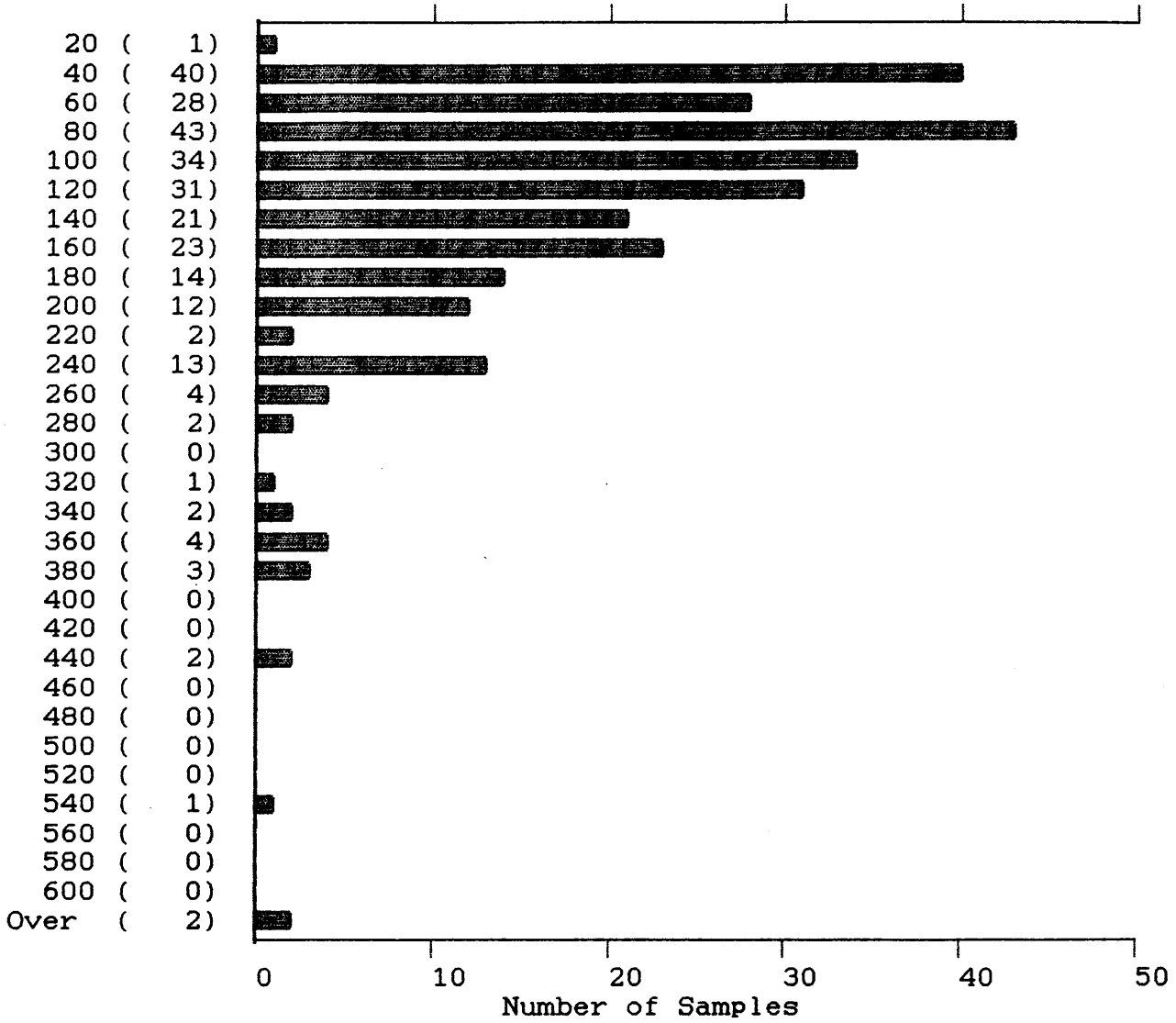
283 Samples

Maximum: 1264
Minimum: 16

Mean: 124
Median: 99
Standard Deviation: 117

CURRAGH RES. (88-4172+4527)

Cu
(PPM)



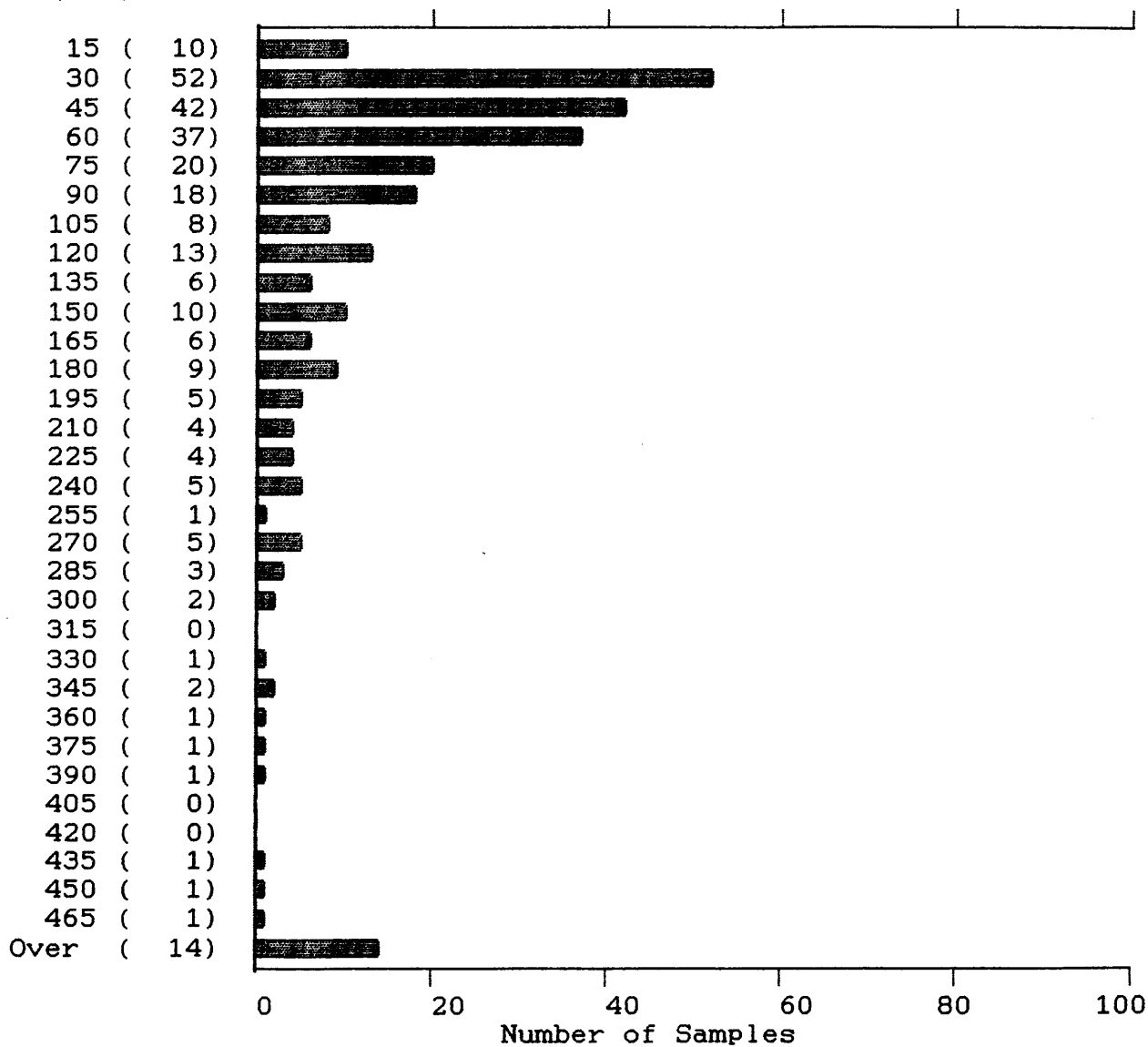
283 Samples

Maximum: 1264
Minimum: 16

Mean: 124
Median: 99
Standard Deviation: 117

CURRAGH RES. (88-4172+4527)

Pb
(PPM)



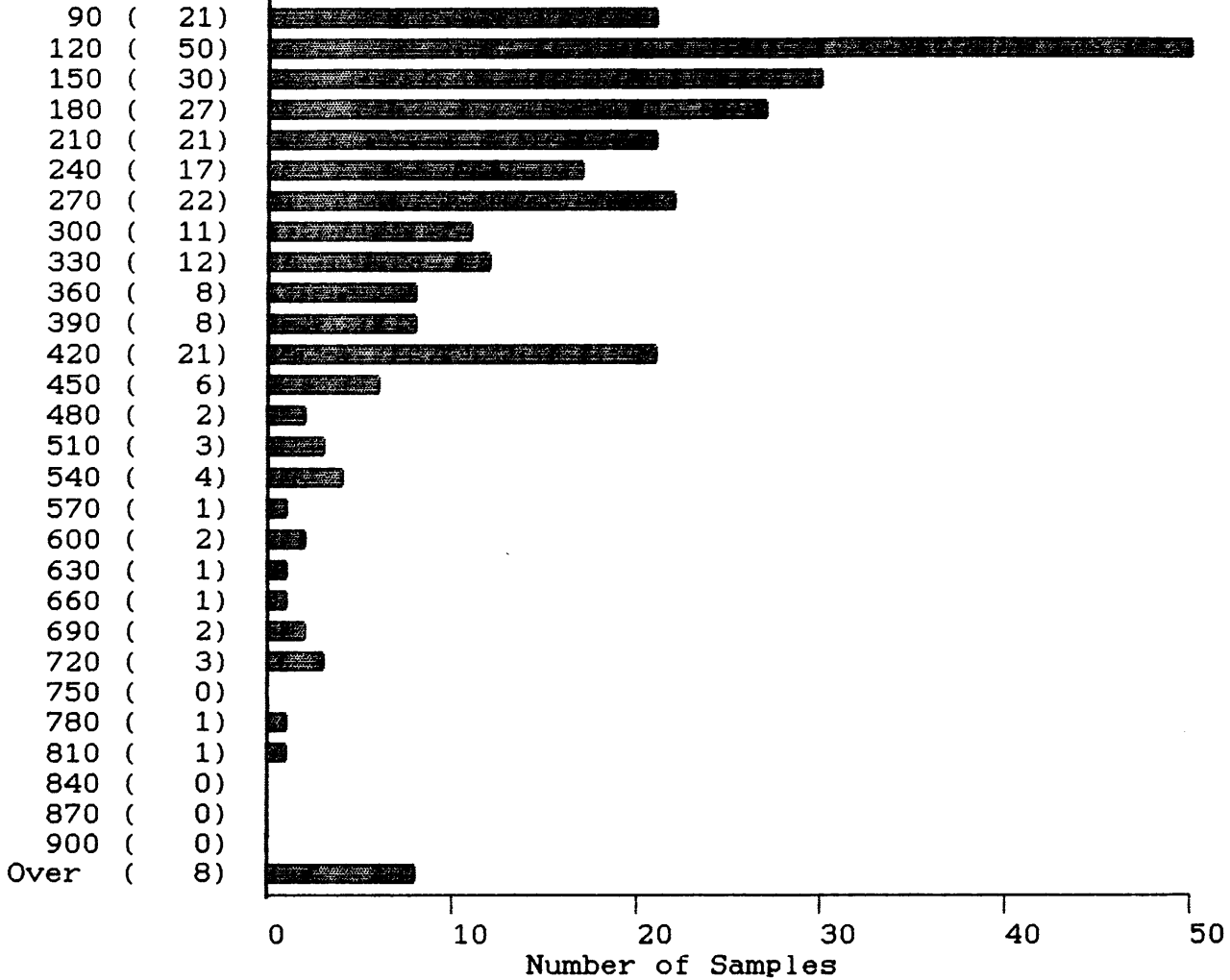
283 Samples

Maximum: 2459
Minimum: 8

Mean: 148
Median: 62
Standard Deviation: 286

CURRAGH RES. (88-4172+4527)

Zn
(PPM)



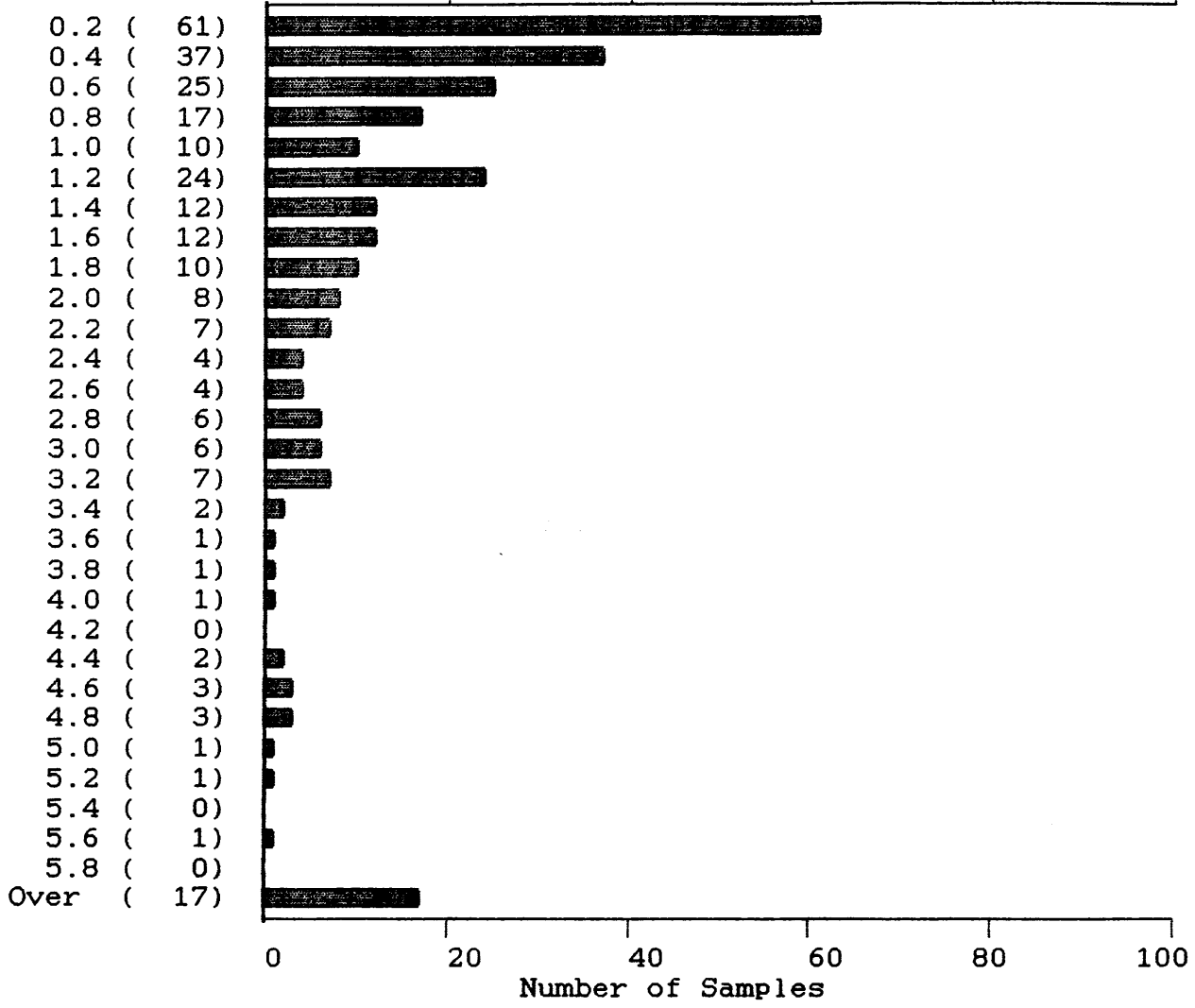
283 Samples

Maximum: 2521
Minimum: 63

Mean: 272
Median: 199
Standard Deviation: 265

CURRAGH RES. (88-4172+4527)

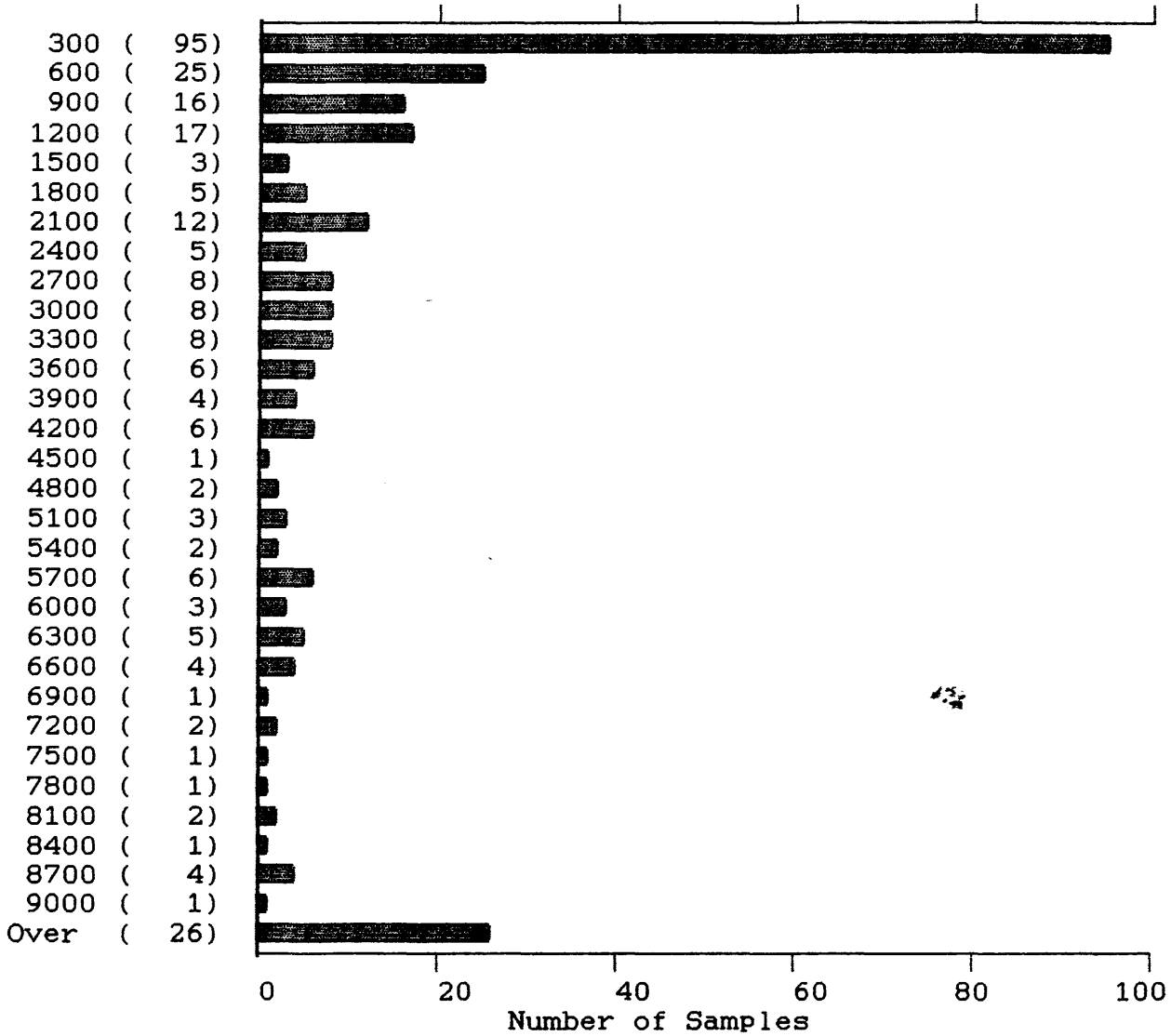
Ag
(PPM)



283 Samples Maximum: 33.1 Mean: 2.0
 Minimum: 0.1 Median: 0.9
 Standard Deviation: 4.2

CURRAGH RES. (88-4172+4527)

As
(PPM)



283 Samples

Maximum: 20425

Mean: 3043

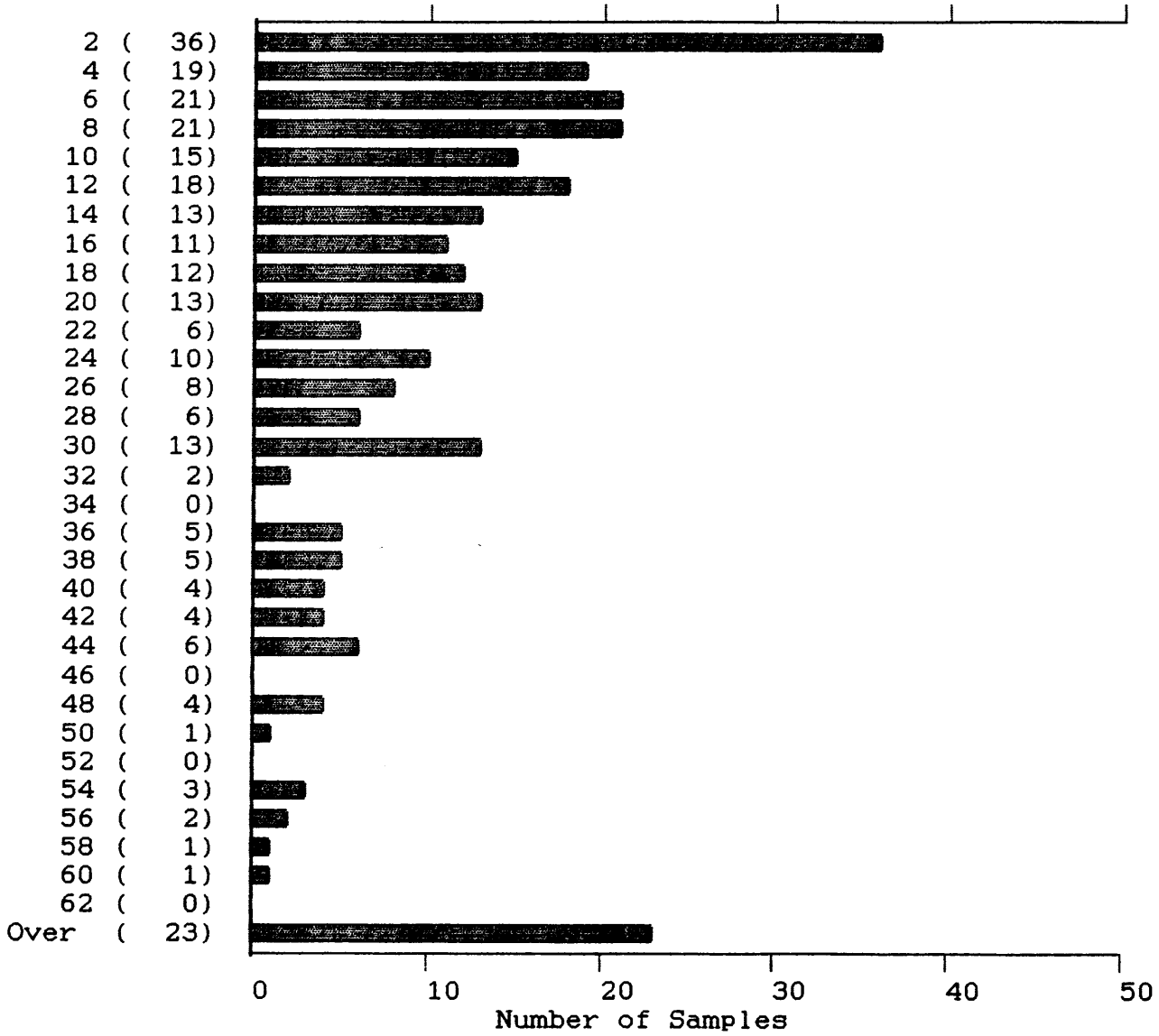
Minimum: 31

Median: 1016

Standard Deviation: 4476

CURRAGH RES. (88-4172+4527)

Sb
(PPM)



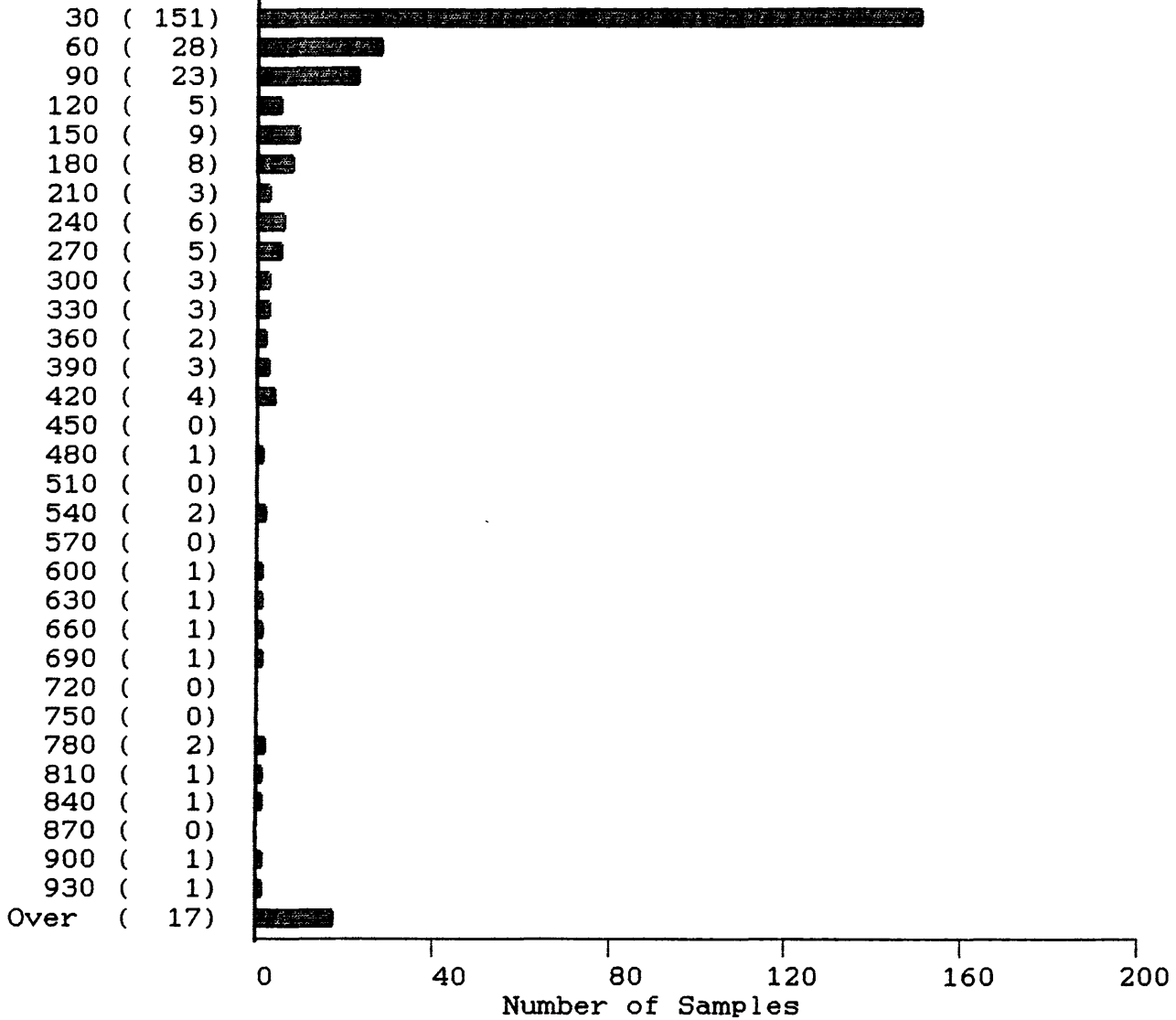
283 Samples

Maximum: 253
Minimum: 2

Mean: 24
Median: 14
Standard Deviation: 31

CURRAGH RES. (88-4172+4527)

Au*
(PPB)



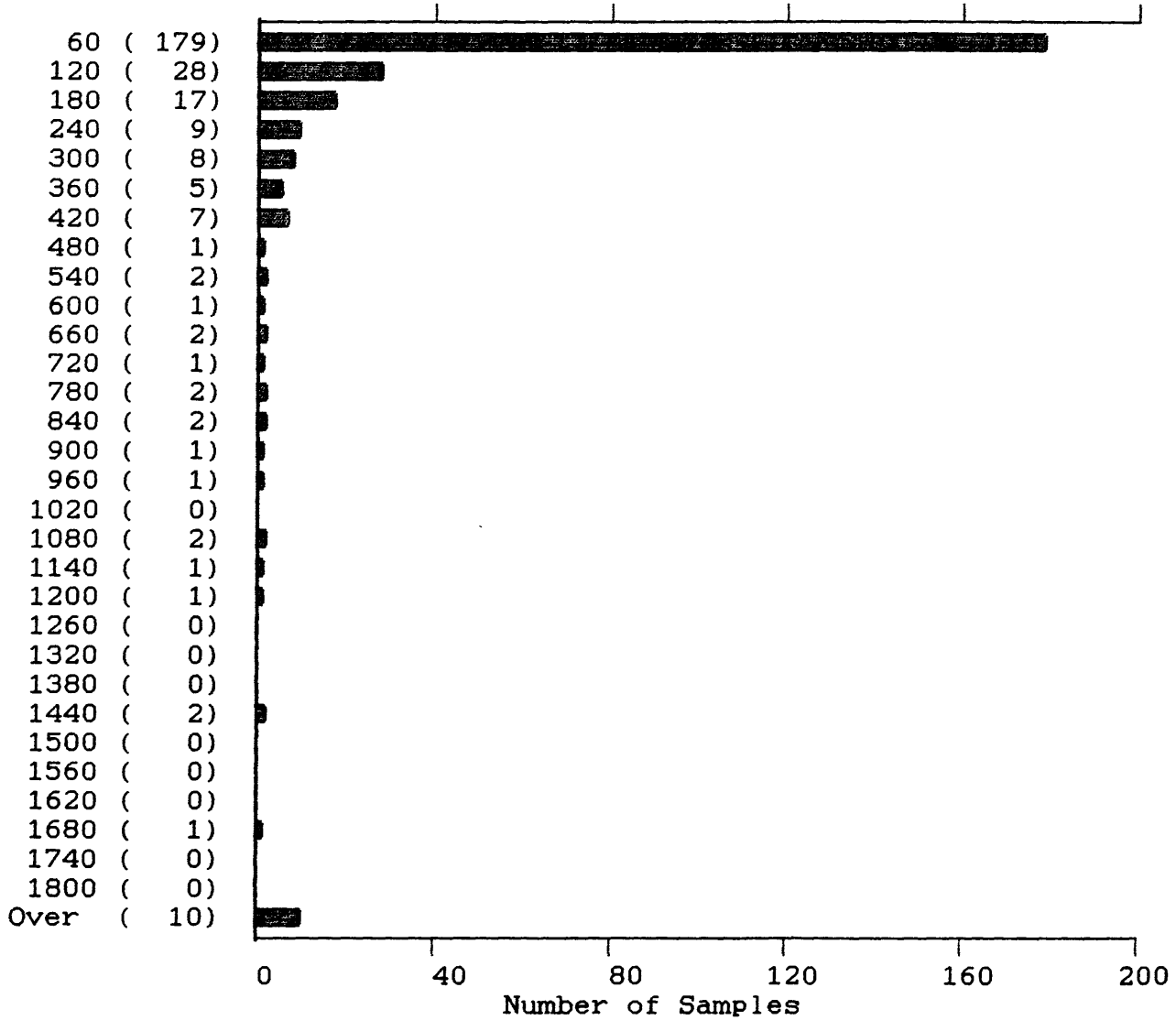
283 Samples

Maximum: 24220
Minimum: 1

Mean: 303
Median: 26
Standard Deviation: 1559

CURRAGH RES. (88-4172+4527)

Au*
(PPB)



283 Samples

Maximum: 24220
Minimum: 1

Mean: 303
Median: 26
Standard Deviation: 1559