

FORT CLAIMS - ENDAKO PROJECT.

DDH F-1

DIP: VERTICAL

DEPTH: 343'

OVERBURDEN TO 62'

ROCK TYPE, ALTERATION

MINERALIZATION

Med. gr'd. subporph. Endako qtz. monz.
 Fresh to weak argillic alt'n of plag.
 Grey feldspathic dyke at 66.5
 vuggy calcite - qtz fract's

Wk. argillic alt'n. Plag. green.
 Minor hematite stain, pseudo's of plag.

Fresh Endako Q.M.

Close-spaced fract's.
 Vuggy, calcite fract's
 Plag. cores soft, green; rims white. Biotite fresh.
 Weak pervasive kaolinization of plag
 Shearing, red hematite stain
 Broken Core.

Fresh Endako Q.M.
 Vuggy fractures.

Small fract's. Plag soft, green.

Shearing. Hematite stain.

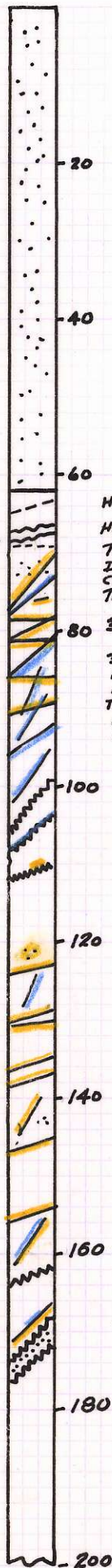
Fresh Endako Q.M.
 Plag. green, soft - kaolinized.
 Fresh Endako Q.M.

Plag. altered.

Plag altered along fractures.
 Intense shearing; granulation.
 Small shears; weak alteration.

Intense shearing, plag soft, white. Fe stain

Weak shearing, alt'n.
 4" inclusion
 Fresh Endako Q.M.



Hlc calcite
 Hlc, blebs pyrite
 Tr pyrite
 Diss magnetite.
 Calcite
 Tr pyrite

3 x hlc pyrite
 3 x rusty calcite
 Hlc pyrite
 Hlc calcite
 Tr pyrite
 Calcite
 Calcite

calcite
 calcite
 tr. pyrite

diss. pyrite in inclusion.
 pyrite.
 calcite
 pyrite

pyrite
 pyrite
 pyrite
 magnetite diss.
 pyrite

pyrite on fract.
 160 Pyrite + calcite

pyrite + minor calcite

810115