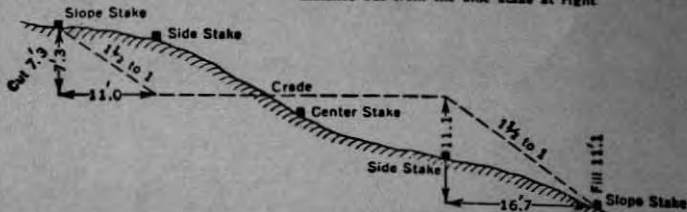




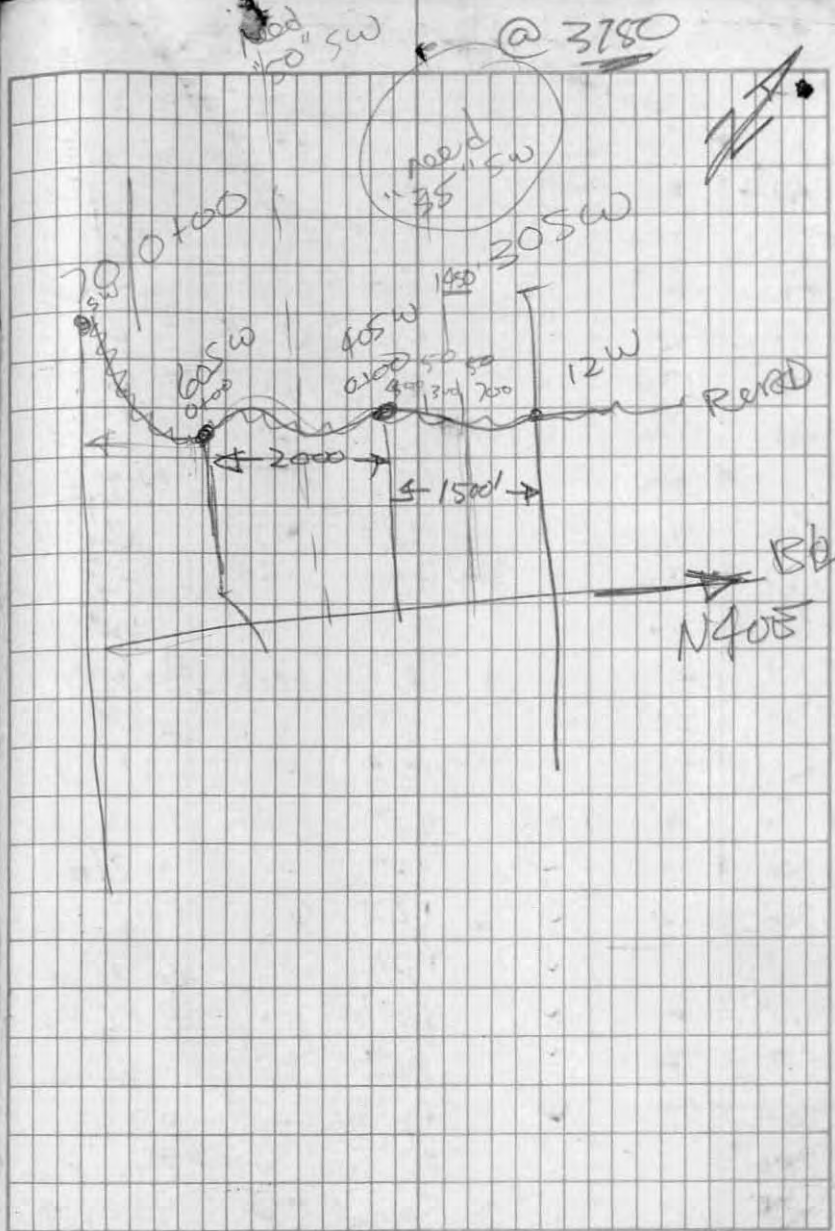
### DISTANCES FROM SIDE STAKES FOR CROSS-SECTIONING

Roadway of any Width. Side Slopes  $1\frac{1}{2}$  to 1.

In the figure below: opposite 7 under "Cut or Fill" and under .3 read 11.0, the distance out from the side stake at left. Also, opposite 11 under "Cut or Fill" and under .1 read 16.7. The distance out from the side stake at right.



Cut or Fill	Distance out from Side or Shoulder Stake									Cut or Fill	
	0	.1	.2	.3	.4	.5	.6	.7	.8		.9
0	0.0	0.2	0.3	0.5	0.6	0.8	0.9	1.1	1.2	1.4	0
1	1.5	1.7	1.8	2.0	2.1	2.3	2.4	2.6	2.7	2.9	1
2	3.0	3.2	3.3	3.5	3.6	3.8	3.9	4.1	4.2	4.4	2
3	4.5	4.7	4.8	5.0	5.1	5.3	5.4	5.6	5.7	5.9	3
4	6.0	6.2	6.3	6.5	6.6	6.8	6.9	7.1	7.2	7.4	4
5	7.5	7.7	7.8	8.0	8.1	8.3	8.4	8.6	8.7	8.9	5
6	9.0	9.2	9.3	9.5	9.6	9.8	9.9	10.1	10.2	10.4	6
7	10.5	10.7	10.8	11.0	11.1	11.3	11.4	11.6	11.7	11.9	7
8	12.0	12.2	12.3	12.5	12.6	12.8	12.9	13.1	13.2	13.4	8
9	13.5	13.7	13.8	14.0	14.1	14.3	14.4	14.6	14.7	14.9	9
10	15.0	15.2	15.3	15.5	15.6	15.8	15.9	16.1	16.2	16.4	10
11	16.5	16.7	16.8	17.0	17.1	17.3	17.4	17.6	17.7	17.9	11
12	18.0	18.2	18.3	18.5	18.6	18.8	18.9	19.1	19.2	19.4	12
13	19.5	19.7	19.8	20.0	20.1	20.3	20.4	20.6	20.7	20.9	13
14	21.0	21.2	21.3	21.5	21.6	21.8	21.9	22.1	22.2	22.4	14
15	22.5	22.7	22.8	23.0	23.1	23.3	23.4	23.6	23.7	23.9	15
16	24.0	24.2	24.3	24.5	24.6	24.8	24.9	25.1	25.2	25.4	16
17	25.5	25.7	25.8	26.0	26.1	26.3	26.4	26.6	26.7	26.9	17
18	27.0	27.2	27.3	27.5	27.6	27.8	27.9	28.1	28.2	28.4	18
19	28.5	28.7	28.8	29.0	29.1	29.3	29.4	29.6	29.7	29.9	19
20	30.0	30.2	30.3	30.5	30.6	30.8	30.9	31.1	31.2	31.4	20
21	31.5	31.7	31.8	32.0	32.1	32.3	32.4	32.6	32.7	32.9	21
22	33.0	33.2	33.3	33.5	33.6	33.8	33.9	34.1	34.2	34.4	22
23	34.5	34.7	34.8	35.0	35.1	35.3	35.4	35.6	35.7	35.9	23
24	36.0	36.2	36.3	36.5	36.6	36.8	36.9	37.1	37.2	37.4	24
25	37.5	37.7	37.8	38.0	38.1	38.3	38.4	38.6	38.7	38.9	25
26	39.0	39.2	39.3	39.5	39.6	39.8	39.9	40.1	40.2	40.4	26
27	40.5	40.7	40.8	41.0	41.1	41.3	41.4	41.6	41.7	41.9	27
28	42.0	42.2	42.3	42.5	42.6	42.8	42.9	43.1	43.2	43.4	28
29	43.5	43.7	43.8	44.0	44.1	44.3	44.4	44.6	44.7	44.9	29
30	45.0	45.2	45.3	45.5	45.6	45.8	45.9	46.1	46.2	46.4	30
31	46.5	46.7	46.8	47.0	47.1	47.3	47.4	47.6	47.7	47.9	31
32	48.0	48.2	48.3	48.5	48.6	48.8	48.9	49.1	49.2	49.4	32
33	49.5	49.7	49.8	50.0	50.1	50.3	50.4	50.6	50.7	50.9	33
34	51.0	51.2	51.3	51.5	51.6	51.8	51.9	52.1	52.2	52.4	34
35	52.5	52.7	52.8	53.0	53.1	53.3	53.4	53.6	53.7	53.9	35
36	54.0	54.2	54.3	54.5	54.6	54.8	54.9	55.1	55.2	55.4	36
37	55.5	55.7	55.8	56.0	56.1	56.3	56.4	56.6	56.7	56.9	37
38	57.0	57.2	57.3	57.5	57.6	57.8	57.9	58.1	58.2	58.4	38
39	58.5	58.7	58.8	59.0	59.1	59.3	59.4	59.6	59.7	59.9	39
40	60.0	60.2	60.3	60.5	60.6	60.8	60.9	61.1	61.2	61.4	40



GEOCHEM LINE NE 4

SAMPLE	STATION	SOIL/HOR/COI/DEP	SLOPE	VEGETATION
F40	00	POD/B/TAN/10"	N	SPRUCE/PINE
F41	2W	POD/B/TAN/10"	W	SPRUCE/PINE FIR
F42	4W	✓ 10"	FLAT	✓
F43	6W	✓ 12"	FLAT	✓
F44	8W	✓ 12"	W	✓
F45	10W	✓ 10"	FLAT	✓
F46	12W	✓ 10"	✓	✓
F47	14W	✓ 14"	<del>FLAT</del> SOUTH	PINE-FIR
F48	16W	POD/B/GRY/14"	FLAT	✓
F49	18W	✓ TAN 10"	✓	✓
F50	20W	✓ TAN GRAY 12"	✓	✓ FPOP
F51	22W	✓ TAN 12"	FLAT	POPLAR
F52	24W	✓ GRAY 10"	✓	✓
F53	26W	✓ LIGHT GRAY 8"	✓	✓ SPINE
F54	28W	POD/B/LIGHT GRAY 10"	FLAT	FIR-POP
F55	30W	✓ 12"	✓	FIR/POP
F56	32W	✓ 14"	SOUTH	FIR/POP SPRUCE
F57	34W	✓ 12"	SOUTH	BARBER CONIFERS TO TOP POPLAR
F58	36W	✓ 10"	✓	POPLAR
F59	38W	✓ 10"	✓	✓
F60	40W	✓ 12"	✓	✓

OVER  
BARREN

~~DATE~~ MAY 31/20

R. G. CURTIS

on Road  
above way?

FORT GROUNDS  
LINDA KO

all soil  
very  
gravelly

ON ROAD

# LINE NE 3 - FORT GROUP

SAMPLE	STATION	SOIL/HORI	COL	DEPTH	SLOPE	VEGETATION
F60A	20W	POD/B/ LIGHT BROWN	10"	10"	SOUTH 20°	OPEN
F61	18W	✓	12"	✓		OPEN/POP
F62	16W	✓	8"	✓		POPLAR
F63	14W	✓	14"	SOUTH 100	✓	
F64	12W	✓	14"	✓		✓
F65	10W	✓	12"	SOUTH 2-30	✓	
F66	8W	✓	8"	✓		FIR
F67	6W	✓	8"	✓		FIR/BIRCH
F68	4W	✓	8"	✓		FIR/PINE
F69	2W	✓	8"	FLAT		✓ SPRUCE
F70	00	SLIGHTLY GLAYED	16"	✓		SPRUCE
F71	2E	POD/B/ TAN	8"	✓		FIR/PINE
F72	4E	✓	14"	✓		✓ SPRUCE
F73	6E	✓	12"	SOUTH		✓
F74	8E	✓	16"	SOUTH		POPLAR
F75	10E	✓	8"	✓		✓
F76	12E	✓	8"	✓		✓
F77	14E	✓	14"	✓		✓
F78	16E	✓	18"	✓		✓
F79	18E	✓	12"	✓		✓
F80	20E	✓	10"	✓		PINE/FIR
F81	22E	✓	✓	✓		✓
F82	24E	✓	10"	✓		✓
F83	26E	✓	✓	✓		✓

OVER

BEFORE

STATION

all soil  
very pure

MAY 31 / 20

R.G. Currie

GEOCHROM  
FORT  
GROUP  
ENDAKO

POPLAR

CONIFERS

EDGE ON MANMADE CLEARING  
ON EDGE OF ROAD

along South side  
of road

STATION	STATION	Sou/HR	col/dopl	SLOPE	VEG
F90	16E	GEYED	2'	SOUTH	SPRUCE
F91	14E	POD/✓	16"	✓	POPT ✓
F92	12E	POD/B/ <sup>LIGHT</sup> <sub>TRAIL</sub>	10"	✓	✓ ✓
F93	10E	✓	10"	✓	POPLAR
F94	8E	✓	✓	✓	✓
F95	6E	POD/B/ <sup>LIGHT</sup> <sub>TRAIL</sub>	10"	SOUTH	POPLAR
F96	4E	✓	16"	✓	✓
F97	2E	POD/B/ <sub>TRAIL</sub>	12"	FLAT	OPEN
F98	0	✓	10"	SOUTH	✓
F99	2W	✓	12"	SOUTH	POPLAR
F100	4W	✓	10"	✓	OPEN
F101	6W	POD/B/ <sub>TRAIL</sub>	10"	1" single gully by stream	
F102	8W	✓	10"	SOUTH	OPEN
F103	10W	POD/B/ <sub>TRAIL</sub>	10"	SOUTH	POPLAR
F104	12W	✓	14"	✓	✓
F105	14W	✓	12"	✓	✓
F106	16W	POD/B/ <sub>TRAIL</sub>	8"	SOUTH	POPLAR
F107	18W	✓	14"	✓	✓
F108	20W	✓	✓	✓	✓
<del>F109</del>					
<del>F110</del>					
<del>F111</del>					

OVERS

MAY 31/10

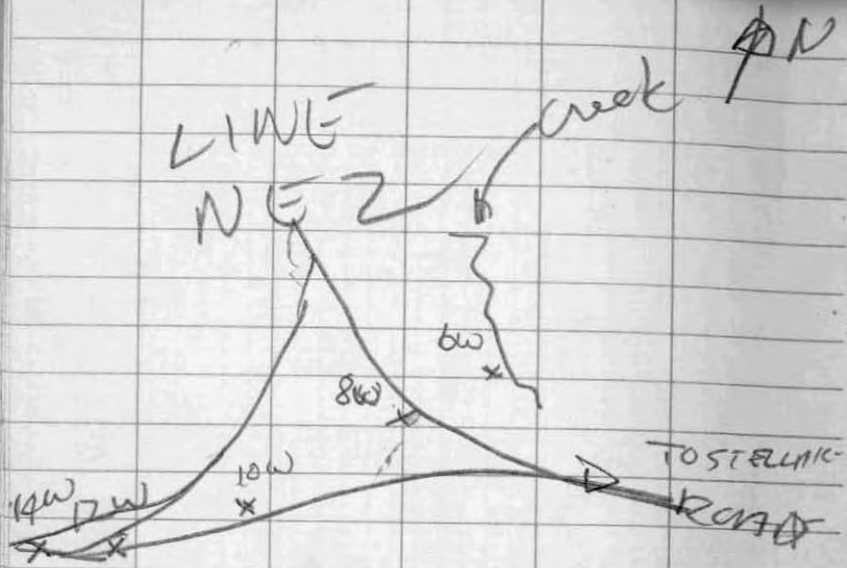
gravelly

R. Curcio

EDGE ABANDONED FARM FIELD  
CENTER

EDGE ABAND. FARM FIELD

BY	ROAD	} see over →
BY	ROAD	
✓	✓	
✓	✓	
✓	✓	



STAMPED STATION	SOIL / HOR / COL / DEPTH	SLOPE	VEGET.
Δ	LINE NE 4		
2E F110	POD/B/TAN / 10"	SOUTH	PINE
4E F111	✓ 10"	SOUTH	✓
6E F112	POD/B/TAN 12"	✓	PINE
8E F113	✓ 14"	✓	✓
10E F114	✓ 10"	✓	✓
↘	LINE NE 5		

F120	00	POD/B/TAN 12"	FLAT	PINE FIR
F121	2W	POD/B/TAN 12"	FLAT	✓ -
F122	4W	GREYED 8"	✓	✓ - willow
F123	6W	POD/B/TAN 8"	✓	PINE FIR
F124	8W	✓ 10"	✓	✓
F125	10W	✓ 12"	✓	✓
F126	12W	POD/B/TAN 14"	✓	✓
F127	14W	✓ 16"	✓	✓
F128	16W	✓ 14"	✓	✓
F129	18W	POD/B/GREY 14"	FLAT	PINE/FIR
F130	20W	POD/B/✓ 16"	✓	✓
F131	22W	POD/B/TAN 16"	FLAT	PINE FIR
F132	24W	✓ 10"	✓	✓
F133	26W	✓ 14"	✓	✓
F134	28W	POD/B/TAN 10"	FLAT	PINE FIR
F135	30W	GREY 12"	✓	✓

MAY 31 / 70

R.G. Currie

FORT CLAIMS EVIDENCE

gravelly

---

ON ROAD NEAR SWAMP

near swamp

JUNE 1 / 70

R.G. Currie

Fort Claims EVIDENCE

gravelly

→ 25W OLD LINE

@ "6153"

		WE	NE	6	(N70°E)
SAMPLE	STATION	SOIL/HOR/COL/DEPTH	TO	SLOPE	USGAE
F150	36W	POD/B/TAN	10"	FLAT → S	PINE FIR-POP
F151	34W	POD/B/ <sup>COARSE</sup> TAN	10"	✓	✓
F152	32W	TAN	10"	EAT	OPEN
F153	30W	✓ ✓	8"	FLAT	✓ PINE POP
F154	28W	✓	10"	✓	PINE POP
F155	26W	POD/B/TAN	8"	SOUTH	PINE
F156	24W	✓	12"	TOP OF small ridge	PINE
F157	22W	✓	12"	NORTH	PINE
F158	20W	✓	12"	FLAT	PINE
F159	18W	✓	12"	✓	✓
F160	16W	✓	8"	✓	✓ FIR
F161	14W	✓	10"	✓	✓ ✓
F162	12W	POD/B/TAN	8"	FLAT	✓ ✓
F163	10W	✓	8"	FLAT	✓ ✓
F164	8W	GREY	18"	FLAT	PINE FIR SPRUCE
F165	6W	OPEN WATER			
F166	4W	SLIGHTLY GLETTED	18"	FLAT	FIR SPRUCE
F167	2W	POD/B/TAN	18"	✓	✓
F168	00	SWAMP			
F169	2E	↓			
F170	4E				
F171	6E				
F172	8E				

QUARR

JUNE 1/70  
 RG Currie  
 Fort Claims  
 EWDARCO

NEAR OLDMILL SITE  
 LOGGED OFF

N of SWAMP T SKIPPING  
 N of SWAMP SWAMP  
 almost here  
 BETWEEN 2 SWAMPS are N & S  
 swamps almost meet

see cover



LINE  
NE 6

AN

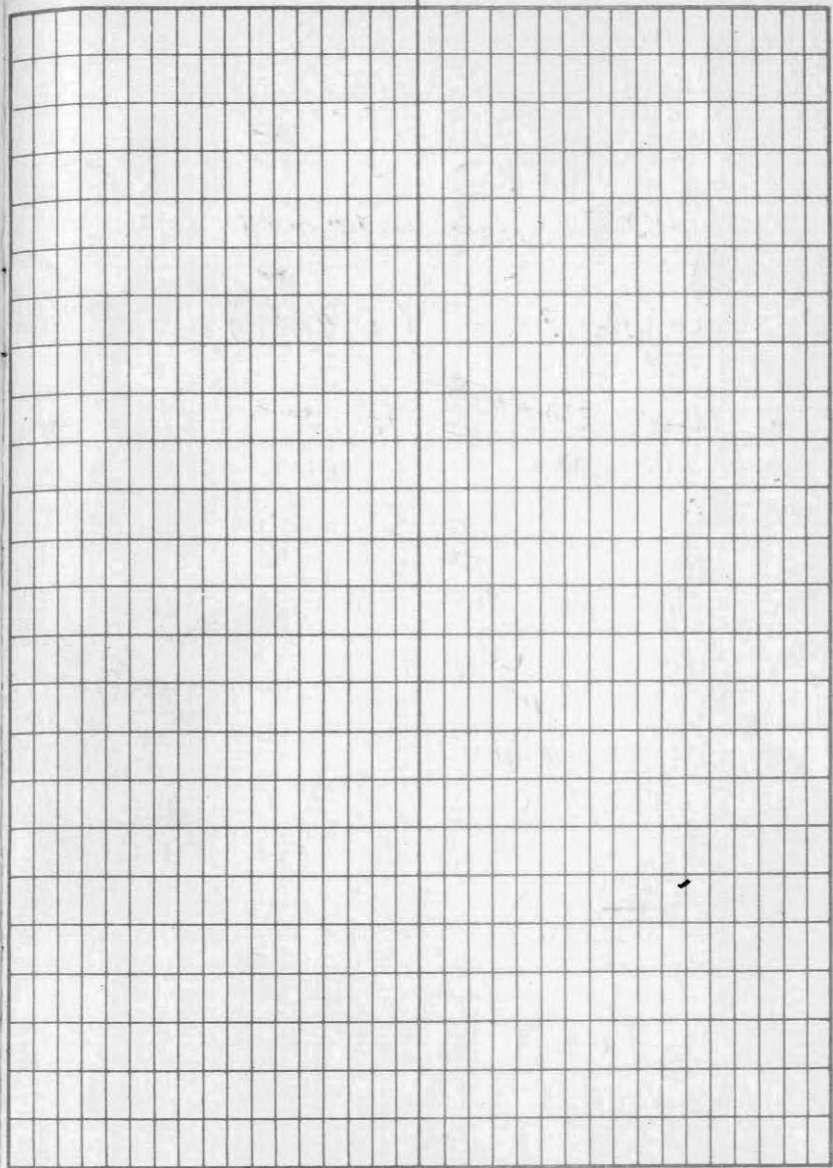
Swamp

NE 6

10w  
8w  
6w  
4w

Swamp

200  
165



NE 5 - (N 70° E)

SAMPLE	STATION	SOIL / H <sub>2</sub> O / C <sub>2</sub> / DEPTH	SLOPE	VEGE
F136	2W	POD/B/Brown 10"	FLAT	PINE
F137	4W	✓ GRY / 10"	✓	✓
F138	6W	GLAYED ✓	✓	✓
F139	8W	POD/B/Brown 10"	SOUTH	PINE
F140	10W	✓	✓	✓

NE 7 - (N 70° E)

<del>F180</del>	00	POD/B/Brown	10"	SOUTH <sup>30</sup>	POPLAR
F181	2E	D ✓	10"	✓	✓
F182	4E	✓	8"	✓	POPLAR
F183	6E	✓	✓	✓	✓
F184	8E	POD/B/Brown	12"	SOUTH	POPLAR
F185	10E	✓	10"	✓	✓
F186	12E	✓	10"	✓	✓
F187	14E	POD/B/Brown	12"	SOUTH	POPFIR
F188	16E	✓	8"	FLAT	FIR
F189	18E	✓	✓	✓	FIR
F190	20E	✓	✓	✓	✓

FORT TEST  
NE 7 ST. 00

Quadrant

JUNE 1/20

← slightly gleyed

R Curve

FORT CLAIMS

→ OLD IRP LINE CROSSING

LINE N8

SAMPLE	STATION	SOIL/HOR	COL/DEP	SLOPE	VEGETATION
F191	2W	POD/B/BRN	10"	SOUTH	POPLAR
F192	4W	✓	10"	✓	✓
F193	6W	✓	10"	✓	✓
F194	8W	POD/B/TAN	10"	FLAT	POP/FIR
F195	10W	GLEYED	16"	✓	FIR/SPRUCE
F196	12W	✓	✓	✓	✓
F197	14W	SLIGHTLY (BEYD)	12"	FLAT	FIR, SP, POP
F198	16W	POD/B/BRN	10"	SOUTH	FIR-PINE
F199	18W	✓	10"	FLAT	✓
F200	20W	✓	✓	✓	✓

JUNE 2 | 70

R.G. Currie

100' from FIR/PINE

FERT

CLAIMS

ENDRICO

44

46

36

35

35

33

67

19

42

44

30

24

$$\begin{array}{r} \Sigma \quad | \quad \hline 455 \end{array}$$

150

3

450