



810055

INTER-OFFICE MEMO

TO E. O. Chisholm

OFFICE Vancouver

FROM J. Boateng

OFFICE Powell River

SUBJECT POWELL RIVER PROJECT.

DATE 2nd May, 67

MESSAGE 1 Enclused please find maps for Magnetometer survey carried out on the Ace group and also the location of the grid.

2 Drill report up to yesterday, 1st May was as follows: -
 Depth 25', Poor recovery for just four feet, almost 100% recovery
 from 4'-25'.
 17'-25' + Small amount of sulphides mostly pyrite and some
 chalc. More quartz and chlorite?
 SIGNED

REPLY 3/ I will be reporting by phone every evening.

REPLY

YOUR ATTACHED MAP INTERESTING. I NOTE RISSBY'S NEW SHOWING
 CORRESPONDS WITH A GOOD MAG ANOMALY. I HAVE MARKED
 THE LOCATION OF POSSIBLE DRILL HOLES AT (A) & (B) ON
 MAP. AT N E, 3H. (THE LOCATION YOU GAVE ME OVER PHONE
 FOR RISSBY'S NEW KIND) AND AT O + 50 S, 5E (IN THE CENTRE
 OF THE SMALL MAG ANOMALY) - THIS MAY BE SOURCE OF
 COARSE MAGNETITE FLAT REPORTED TO ME BY RISSBY 75 FT.
 NORTH WEST OF OUR PRESENT DRILL LOCATION. SCOUT THESE
 TWO AREAS THOROUGHLY & ADVISE ME ON POSSIBILITY OF DRILLING

DATE

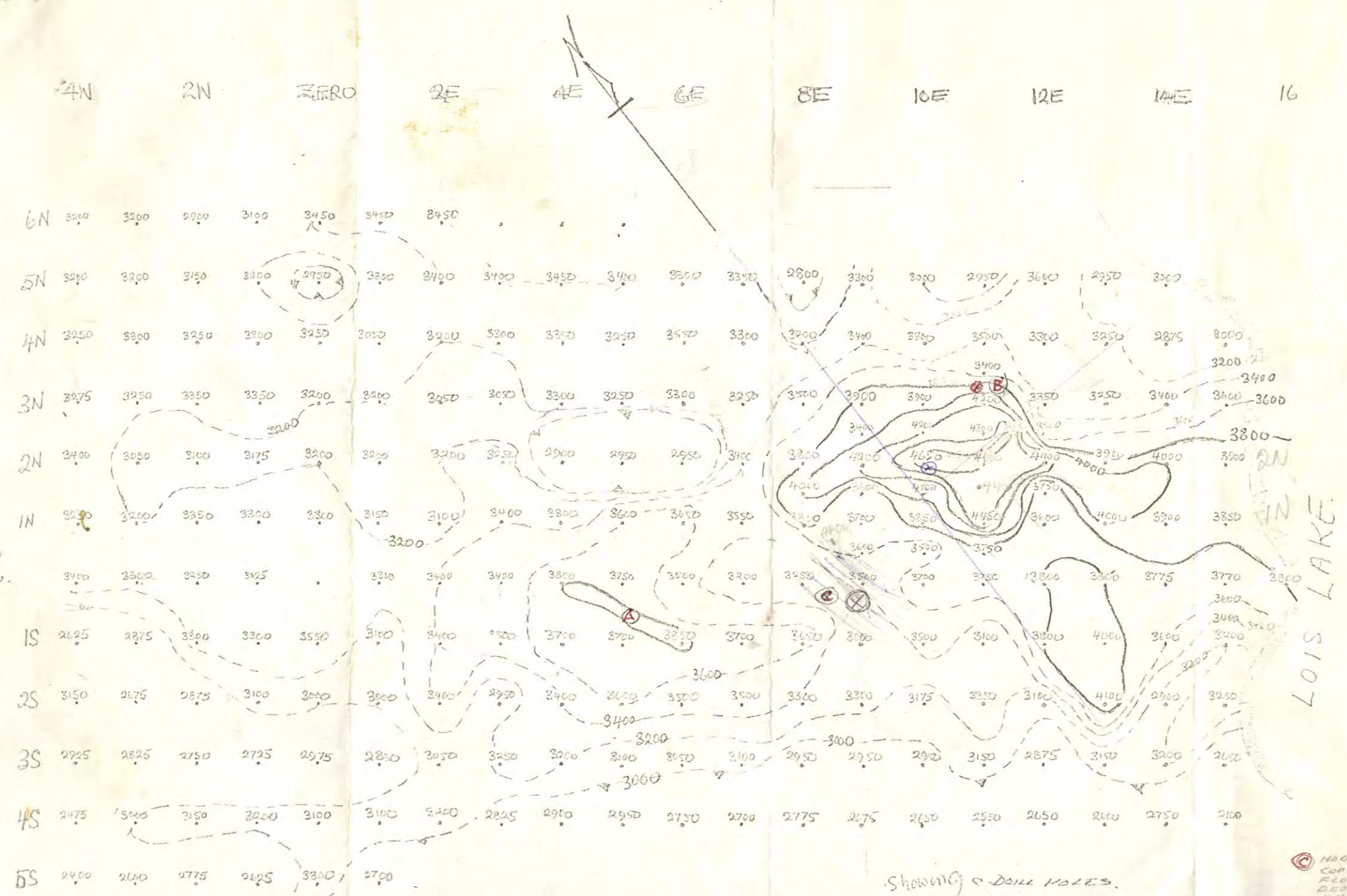
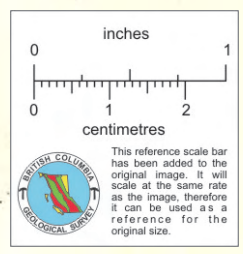
THESE LOCATIONS
OFFICE

SIGNED

J. Boateng

BY J. N. B. DATE April 67 SUBJECT ACE GP MAG SURVEY
 Values & Contours
 SURVEYED & DRAWN BY J. N. BOATENG.

SHEET NO. OF Scale: 1" = 200'
 JOB NO. _____ INSTRUMENT: SHARPE MAGNETOMETER MF-1



Showing \odot DRILL HOLES.

- \odot MAGNETIC COPPER FLAT DEPOSITED BY RISBY.
- \otimes No. 5 SHARP MAGNETOMETER BY RISBY.
- \textcircled{A} \textcircled{B} POSSIBLE DRILL HOLES.

BY J.N.B. DATE Apr. 167 SUBJECT GRID LOCATION ON
ACE GROUP. (POWELL RIVER)

SHEET NO. OF
JOB NO.

