

LOWER TO UPPER JURASSIC

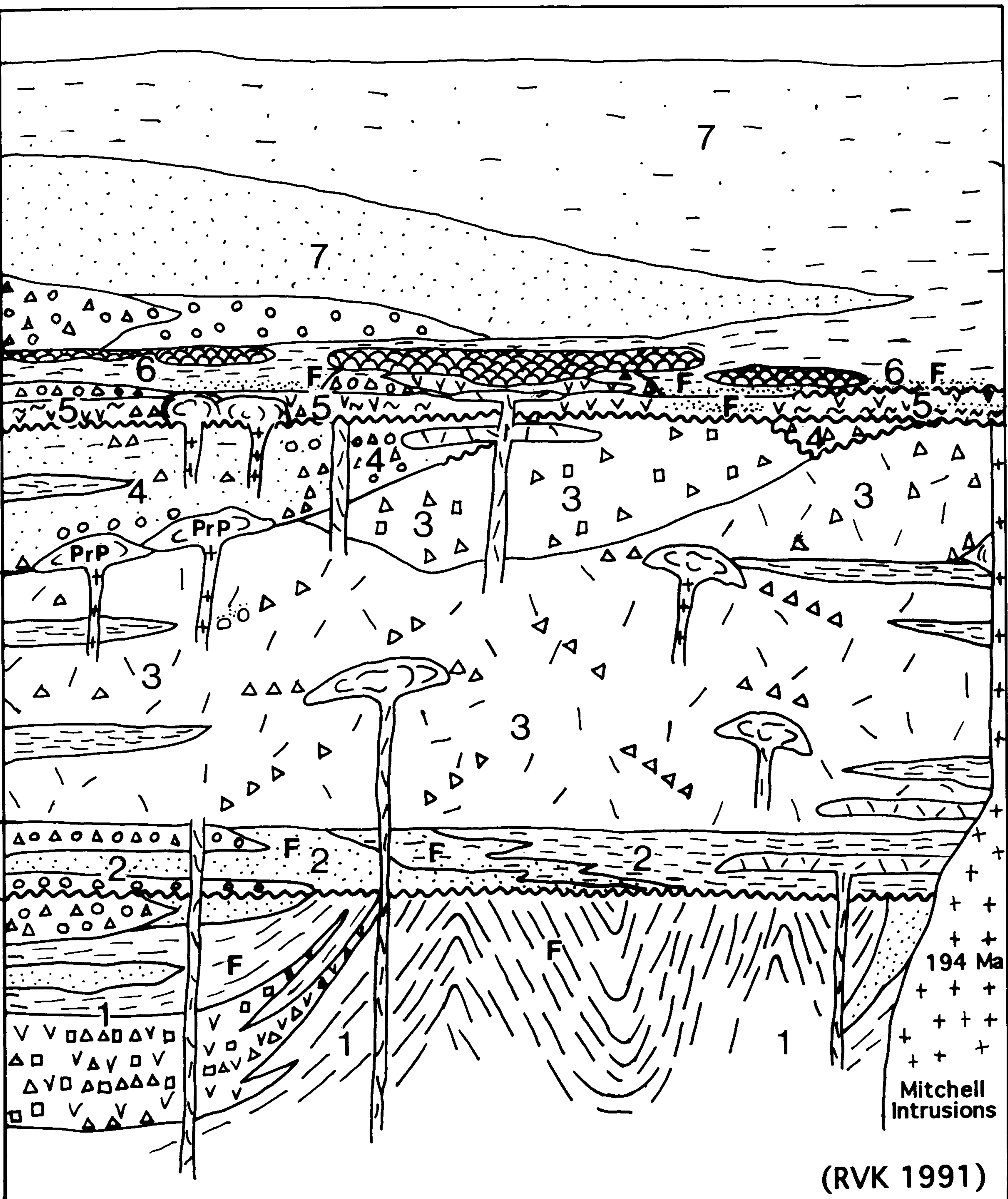
Bowser Lake Group

Hazelton Group

Lower Jurassic
Jack Formation

UPPER TRIASSIC

Stuhini Group



Intrusive Rocks

mafic ; felsic

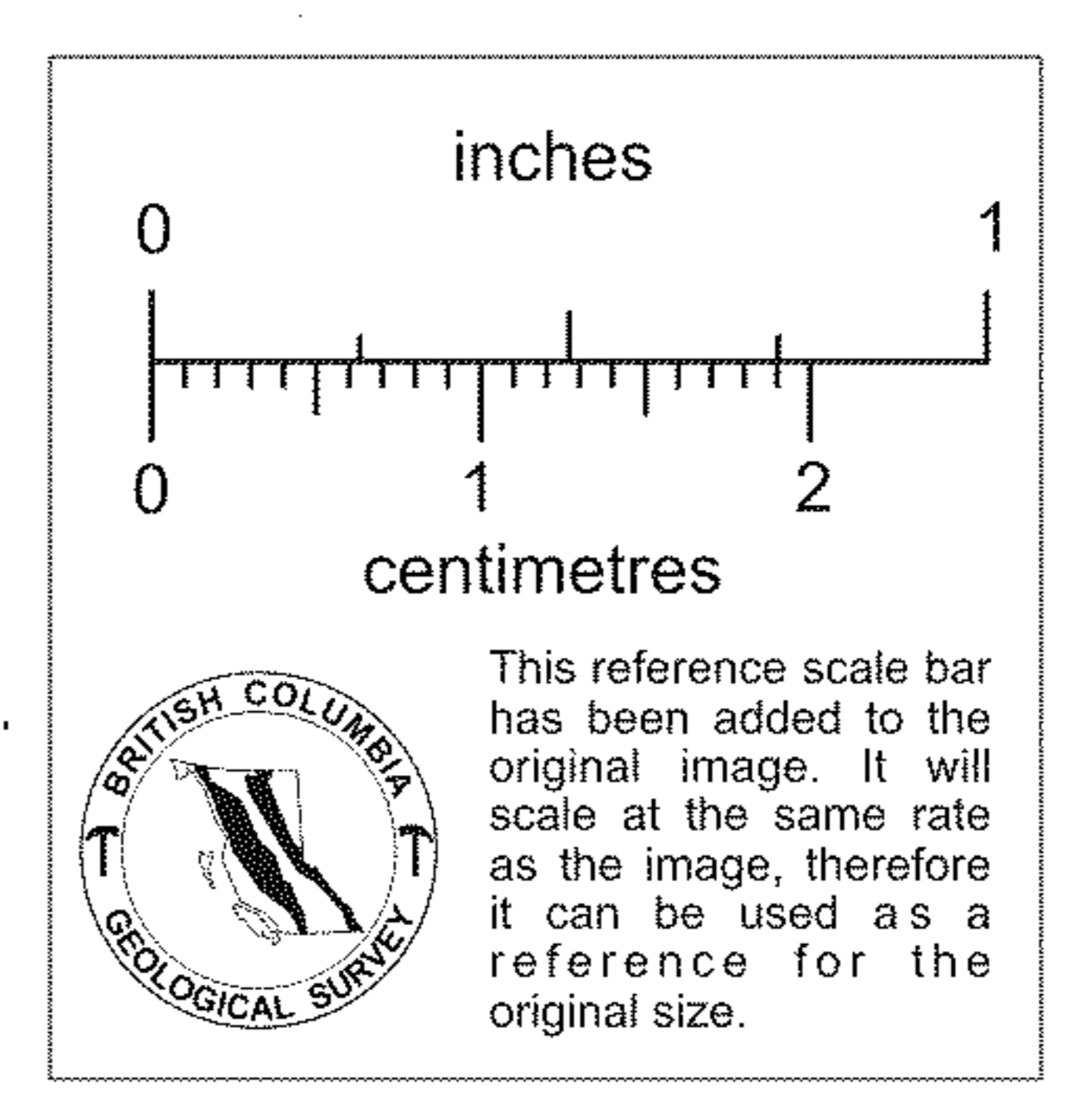
Volcanic Rocks

- pillow lava
- welded tuff (fiamme)
- flow layered (flow dome)
- breccia
- undifferentiated

Sedimentary Rocks

- mudstone
- sandstone
- conglomerate ; breccia

- PrP Premier Porphyry
- pyroxene-phyric
- ∖∖∖ plagioclase-(hornblende-)phyric
- ~~~~~ unconformity
- F fossil locality



804263