



Energy, Mines and  
Resources Canada

Geological Survey  
of Canada Sector

Énergie, Mines et  
Ressources Canada

Secteur de la Commission  
géologique du Canada

803967

601 Booth Street  
Ottawa, Ontario  
K1A 0E8

14 December 1990

B. Way  
Newhawk Gold Mines Ltd.  
860 - 625 Howe Street  
Vancouver, B.C.  
V6C 2T6

Dear Barry:

Sorry for the delay in reporting the mineral discoveries. No matter how much I pester people I still have not been able to obtain any analyses.

Attached is a sketch showing the location of the vein system and my samples. Samples KQ-90-157C and 157F were the first ones to be analyzed mainly because they are the only ones that are <sup>not</sup> oxidized and leached completely.

My impression of the vein system is that it is large and intense and shows many similarities to the Shore~~s~~ Zones with a very high barite content and minor amounts of tetrahedrite, sphalerite and galena as well as pyrite. Some leached quartz-barite vein blocks along the shoreline are greater than 2 metres in diameter.

I was attracted to the area because of two rusty points along the edge of the lake. Other workers had not examined this area probably because most of Mount John Walker is not gossanous and this side of the lake has precipitous cliffs that drop directly into the water. Little sign exists of anybody doing any significant work on these veins. At site 157F - 157G evidence exists of somebody attempting to take handspecimens from the top of the vein outcrops but these are sloping surfaces that are leached completely. Sample KQ-90-157F, with unoxidized sulphides, was obtained at water level at the base of the rock face. These localities could be trenched and drilled easily from the north side.

.../2

Canada

I will send the assays when available and will phone you soon.  
I will be in Vancouver on December 21 and 24 and could meet  
with you and Tony Ransom .

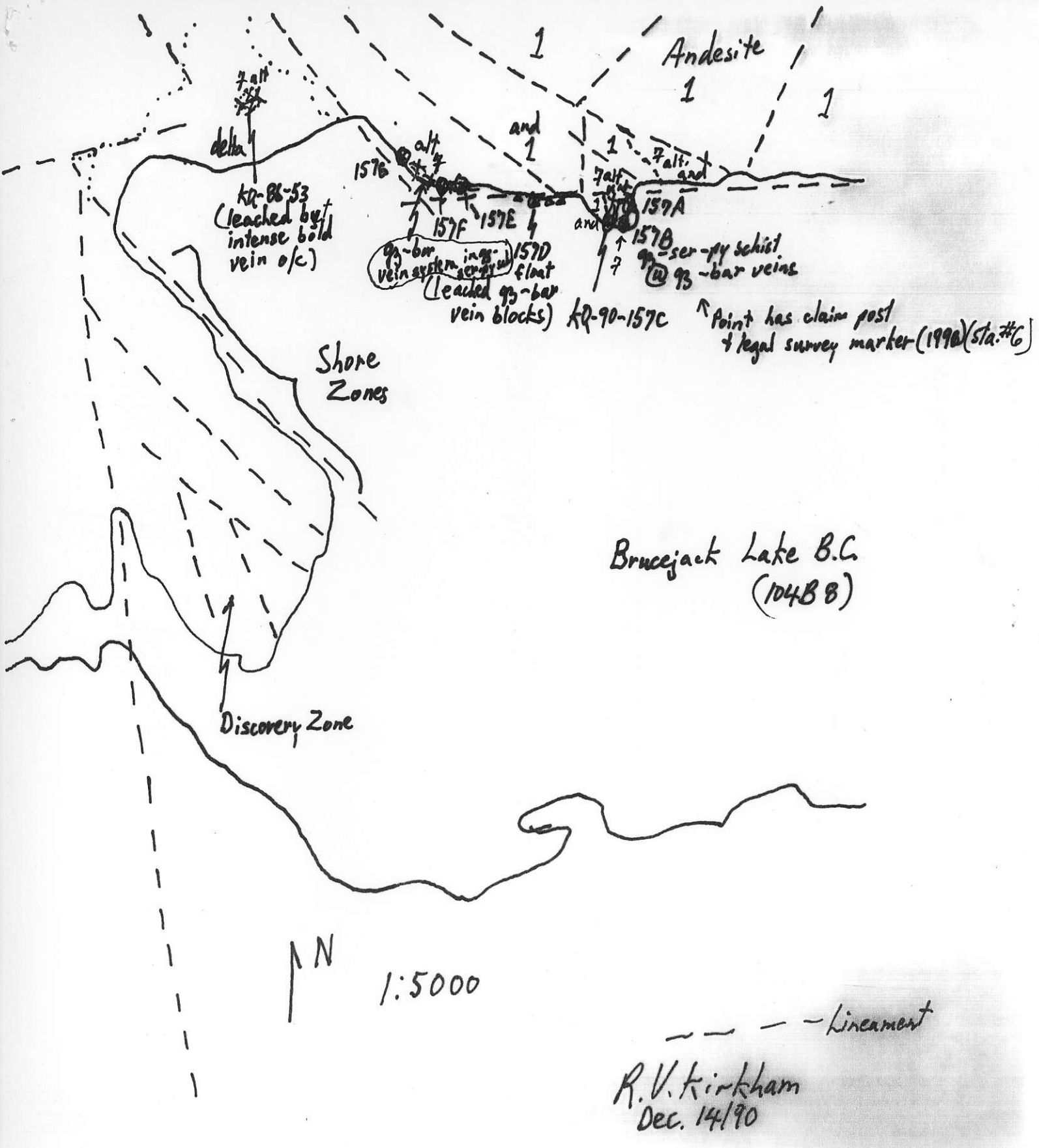
Best regards,

*Rod*

R.V. Kirkham

Attachment

cc: S.B. Ballantyne



KQ-88-53  
(leached by  
intense bold  
vein o/c)

qz-bar  
vein system  
(leached qz-bar  
vein blocks)

ser-py schist  
@ qz-bar veins

Point has claim post  
+ legal survey marker (1990) (sta. #6)

Brucejack Lake B.C.  
(10488)

N

1:5000

--- Lineament

R.V. Kirkham  
Dec. 14/90