

803791

ROD

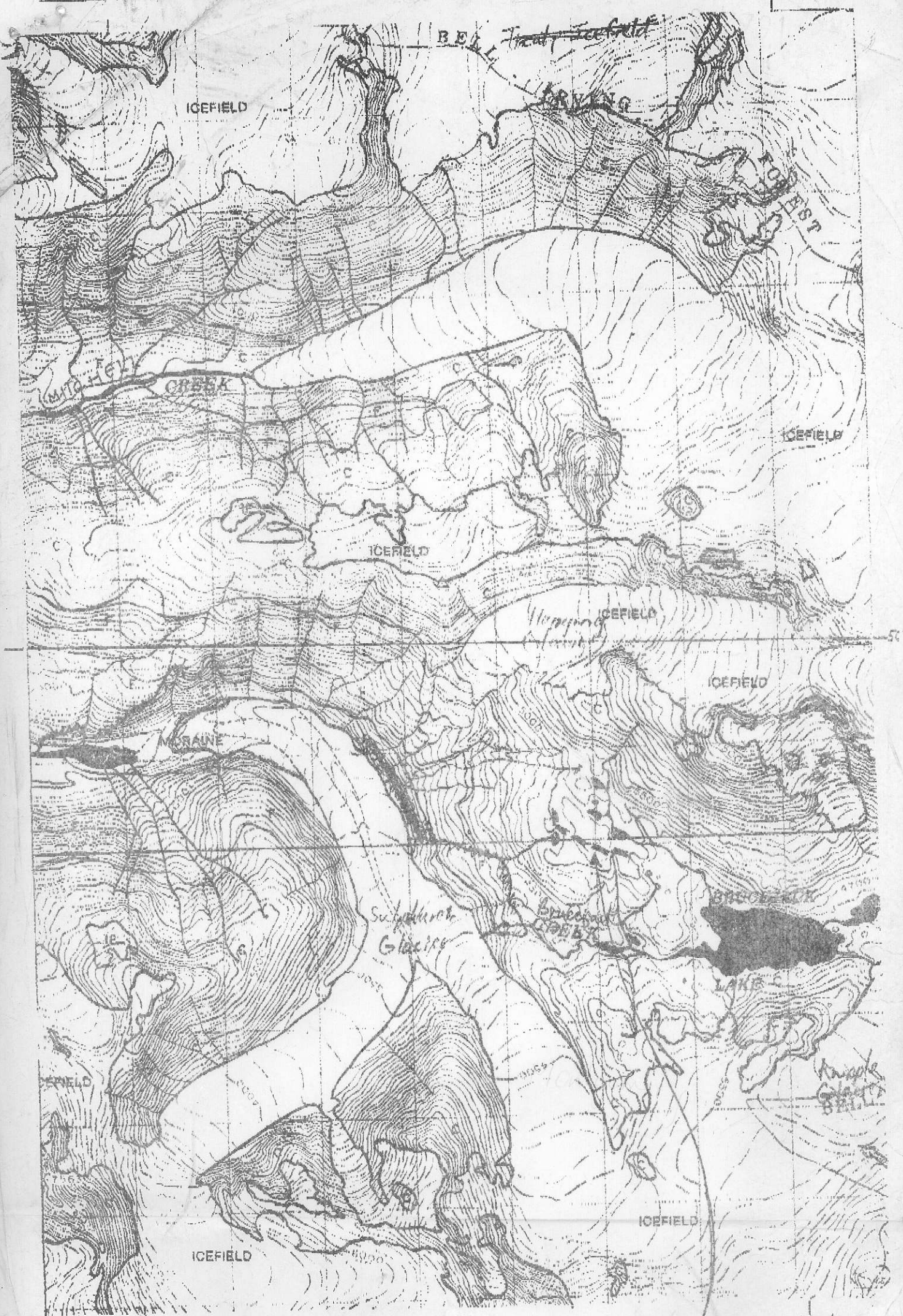
We camped for several day near the top of a ridge (on the Sulphurets side) in a brushy area. As I recall, the brush (I don't recall the type) was tall enough to provide some shelter.

The mineralization was found in a vein exposed in the extreme headwaters of a creek flowing down to Sulphurets glacier. At that point, it was a small "mossy" gully or rill. Peeling the moss off an almost vertical face directly in the centre of the gully revealed about 4 ft. of vein length. The vein was white (calcite and/or quartz) with various sulfides. I don't recall anything unusual, probably pyrite, galena, etc.

I have put a dashed line where I think the general area is. If you have a pair (stereo) of aerial photos, I can probably do better.

Best regards,

Joe Montgomery



*Approximate Dam*