



Energy, Mines and
Resources Canada

Geological Survey
of Canada Sector

Énergie, Mines et
Ressources Canada

Secteur de la Commission
géologique du Canada

601 Booth Street
Ottawa, Ontario
K1A 0E8

Brucejack-
North Side

803670

104B/8

14 December 1990

B. Way
Newhawk Gold Mines Ltd.
860 - 625 Howe Street
Vancouver, B.C.
V6C 2T6

Dear Barry:

Sorry for the delay in reporting the mineral discoveries. No matter how much I pester people I still have not been able to obtain any analyses.

Attached is a sketch showing the location of the vein system and my samples. Samples KQ-90-157C and 157F were the first ones to be analyzed mainly because they are the only ones that are ^{not} oxidized and leached completely.

My impression of the vein system is that it is large and intense and shows many similarities to the Shore~~s~~ Zones with a very high barite content and minor amounts of tetrahedrite, sphalerite and galena as well as pyrite. Some leached quartz-barite vein blocks along the shoreline are greater than 2 metres in diameter.

I was attracted to the area because of two rusty points along the edge of the lake. Other workers had not examined this area probably because most of Mount John Walker is not gossanous and this side of the lake has precipitous cliffs that drop directly into the water. Little sign exists of anybody doing any significant work on these veins. At site 157F - 157G evidence exists of somebody attempting to take handspecimens from the top of the vein outcrops but these are sloping surfaces that are leached completely. Sample KQ-90-157F, with unoxidized sulphides, was obtained at water level at the base of the rock face. These localities could be trenched and drilled easily from the north side.

.../2

- 2 -

I will send the assays when available and will phone you soon.
I will be in Vancouver on December 21 and 24 and could meet
with you and Tony Ransom .

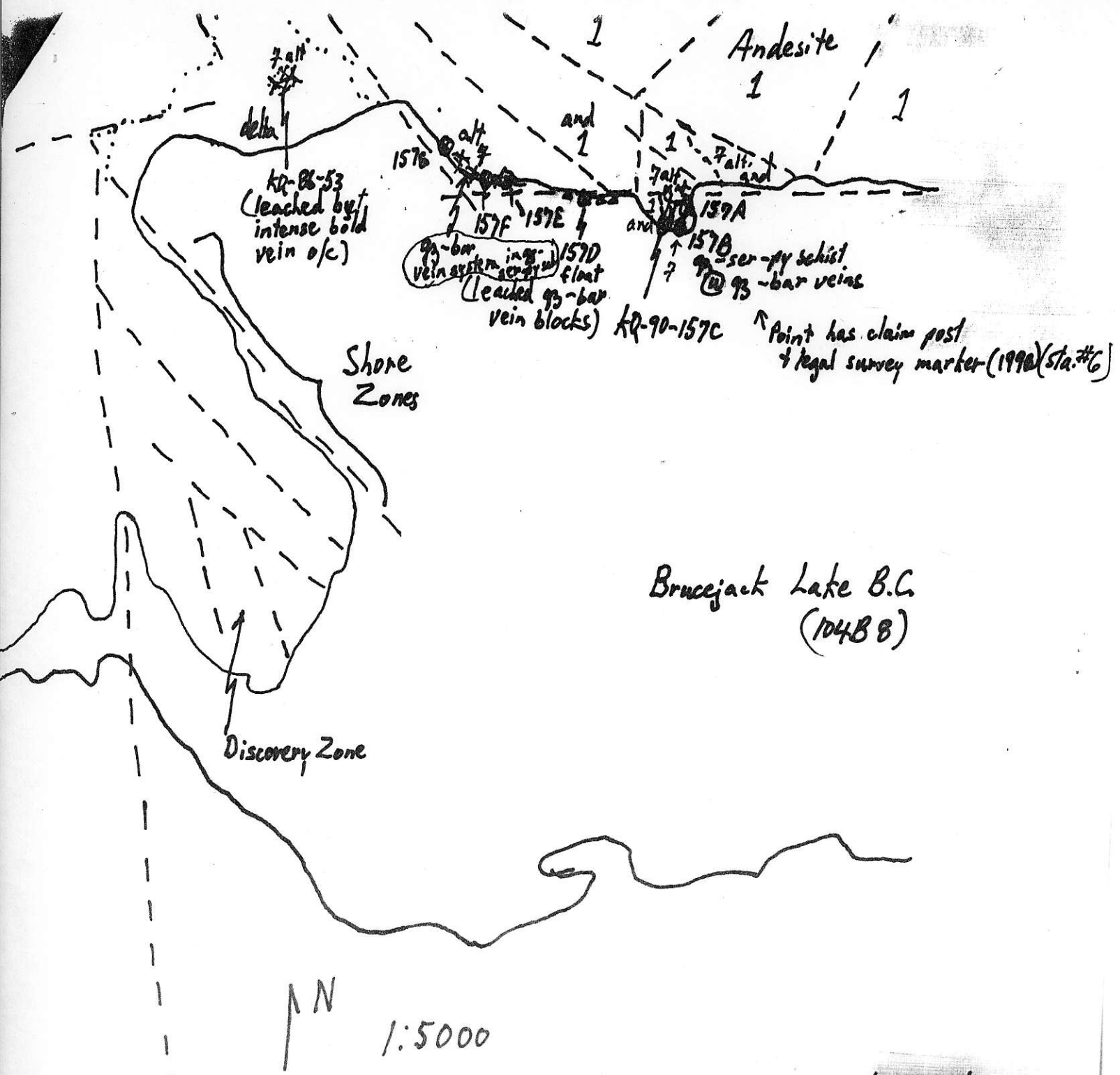
Best regards,

Rod

R.V. Kirkham

Attachment

cc: S.B. Ballantyne



KQ-88-53
(leached by intense bold vein o/c)

1576
alt 7
157F 157E
qz-bar vein system ser-py
(leached qz-bar vein blocks)

157A
157B
ser-py schist
qz-bar veins

KQ-90-157C
Point has claim post & legal survey marker (1990) (Sta. #6)

Shore Zones

Discovery Zone

Brucejack Lake B.C.
(104B8)



1:5000

--- lineament

R.V. Kinkham
Dec. 14/90



6 269 000 N

