

Subject: Regional Geology for Knipple Lake
From: "Kelly B Funk" <funks@telusplanet.net>
Date: Wed, 16 Jul 2008 16:35:22 -0700
To: "Rod Kirkham" <rkirkham@telus.net>

803539

This geology is interesting.

Middle Jurassic to Upper Jurassic

Hazelton Group

muJHM Mount Dilworth Formation: calc-alkaline volcanic rocks

muJHs undivided sedimentary rocks

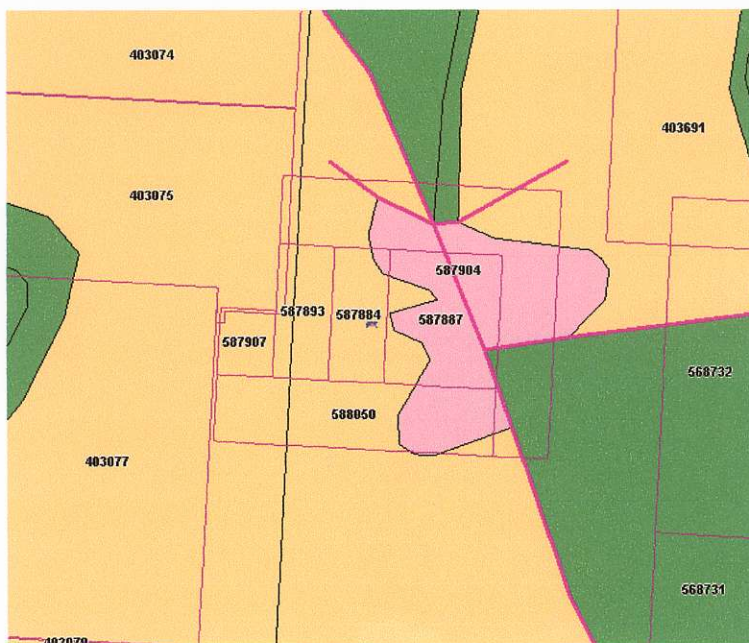
Early Jurassic

EJEK Eskay Porphyry, Knipple Porphyry or Inel Stock: feldspar porphyritic intrusive rocks

Lower Jurassic

IJHB Betty Creek Formation: volcanoclastic rocks

British Columbia Ministry of Energy, Mines and Petroleum Resources
Geological Survey Branch



RGS AAS Data
[View RGS Metadata](#)



[Main Table](#)

Click
Note:

| Master ID | Zn | Cu | Pb | Ni | Co | Ag | Mn | Fe (%) | Mo | Sn | Hg (ppb) | As | Sb | Cd | V | Bi | Cr | Se |
|----------------------------|-----|----|----|----|----|-----|------|--------|----|----|----------|----|-----|-----|----|----|----|----|
| 104A041282 | -1 | -1 | -1 | -1 | -1 | -1 | -1 | -1 | -1 | -1 | -1 | -1 | -1 | -1 | -1 | -1 | -1 | -1 |
| 104A041305 | -1 | -1 | -1 | -1 | -1 | -1 | -1 | -1 | -1 | -1 | -1 | -1 | -1 | -1 | -1 | -1 | -1 | -1 |
| 104B871443 | 495 | 46 | 51 | 66 | 15 | 1 | 1250 | 4 | 12 | 1 | 140 | 72 | 4.8 | 3.7 | 34 | -1 | -1 | -1 |
| 104B871444 | 225 | 28 | 57 | 10 | 8 | 0.6 | 1480 | 3.3 | 4 | 1 | 100 | 13 | 2 | 0.9 | 27 | -1 | -1 | -1 |

[BC Geological Survey](#)

[British Columbia Ministry of Energy, Mines and Petroleum Resources](#)

Last updated in April 2007

| Master ID | Au (ppb) | Sb | As | Ba | Br | Ce | Cs | Cr | Co | Eu | Hf (%) | Fe (%) | La | Lu | Mo | Ni | Rb | Sm | Sc | Na | Ta | Tb | Th | W | U | Yt |
|----------------------------|----------|-----|------|------|-----|----|-----|----|----|----|--------|--------|----|-----|----|----|-----|-----|------|------|-----|-----|-----|----|-----|----|
| 104A041282 | 32 | 9.1 | 54.8 | 2600 | 0.5 | 61 | 5.5 | 29 | 26 | 1 | 4 | 10 | 29 | 0.4 | 2 | -1 | 110 | 5.8 | 20.6 | 1.6 | 0.8 | 0.9 | 5.8 | 3 | 3.4 | 3 |
| 104A041305 | 3 | 3.2 | 18 | 1300 | 0.8 | 60 | 4.1 | 89 | 16 | 2 | 6 | 5.2 | 31 | 0.7 | 4 | -1 | 70 | 7.4 | 19 | 2.09 | 1 | 1.2 | 5.6 | 2 | 3.7 | 5 |
| 104B871443 | -1 | -1 | -1 | -1 | -1 | -1 | -1 | -1 | -1 | -1 | -1 | -1 | -1 | -1 | -1 | -1 | -1 | -1 | -1 | -1 | -1 | -1 | -1 | -1 | -1 | -1 |
| 104B871444 | -1 | -1 | -1 | -1 | -1 | -1 | -1 | -1 | -1 | -1 | -1 | -1 | -1 | -1 | -1 | -1 | -1 | -1 | -1 | -1 | -1 | -1 | -1 | -1 | -1 | -1 |

[BC Geological Survey](#)

 MapPlace.ca

RGS ICPMS Data

[View RGS Metadata](#)

[Main Table](#)

Click Linked Headings to Sort Table. Click on Master ID link for

Note: Value of '-1' indicates 'not determined'; values are in ppm unless specified. To print this file

| Master ID | Al (%) | Sb | As | Ba | Bi | Cd | Ca (%) | Cr | Co | Cu | Ga | Au (ppb) | Fe (%) | La | Pb | Mg (%) | Mn | Hg (ppb) | Mo | Ni |
|----------------------------|--------|------|------|-------|------|------|--------|------|------|-------|-----|----------|--------|------|-------|--------|------|----------|------|------|
| 104A041282 | 1.21 | 3.01 | 49.2 | 67.3 | 0.75 | 0.87 | 0.61 | 8.3 | 20.7 | 32.72 | 3.5 | -1 | 6.26 | 11.4 | 21.4 | 0.83 | 1084 | 197 | 1.39 | 10.6 |
| 104A041305 | 1.2 | 2.21 | 16.6 | 121.6 | 0.12 | 1.32 | 0.46 | 21 | 12.5 | 35.7 | 4.3 | -1 | 3.86 | 14.1 | 21.36 | 0.54 | 878 | 55 | 3.13 | 37 |
| 104B871443 | 1.09 | 4.39 | 41.9 | 135 | 0.17 | 3.68 | 0.32 | 20.5 | 15.9 | 45.52 | 2.9 | -1 | 4.15 | 14.8 | 49.14 | 0.45 | 1498 | 162 | 12.1 | 61.3 |
| 104B871444 | 1.18 | 2.25 | 9.2 | 339 | 0.2 | 1.1 | 0.43 | 7.9 | 9.1 | 27 | 3.7 | -1 | 3.15 | 34.2 | 60.51 | 0.21 | 1553 | 91 | 4.16 | 10.2 |