

Subject: Knipple Creek  
From: "Kelly B Funk" <funks@telusplanet.net>  
Date: Wed, 16 Jul 2008 17:47:22 -0700  
To: "Rod Kirkham" <rkirkham@telus.net>

803537

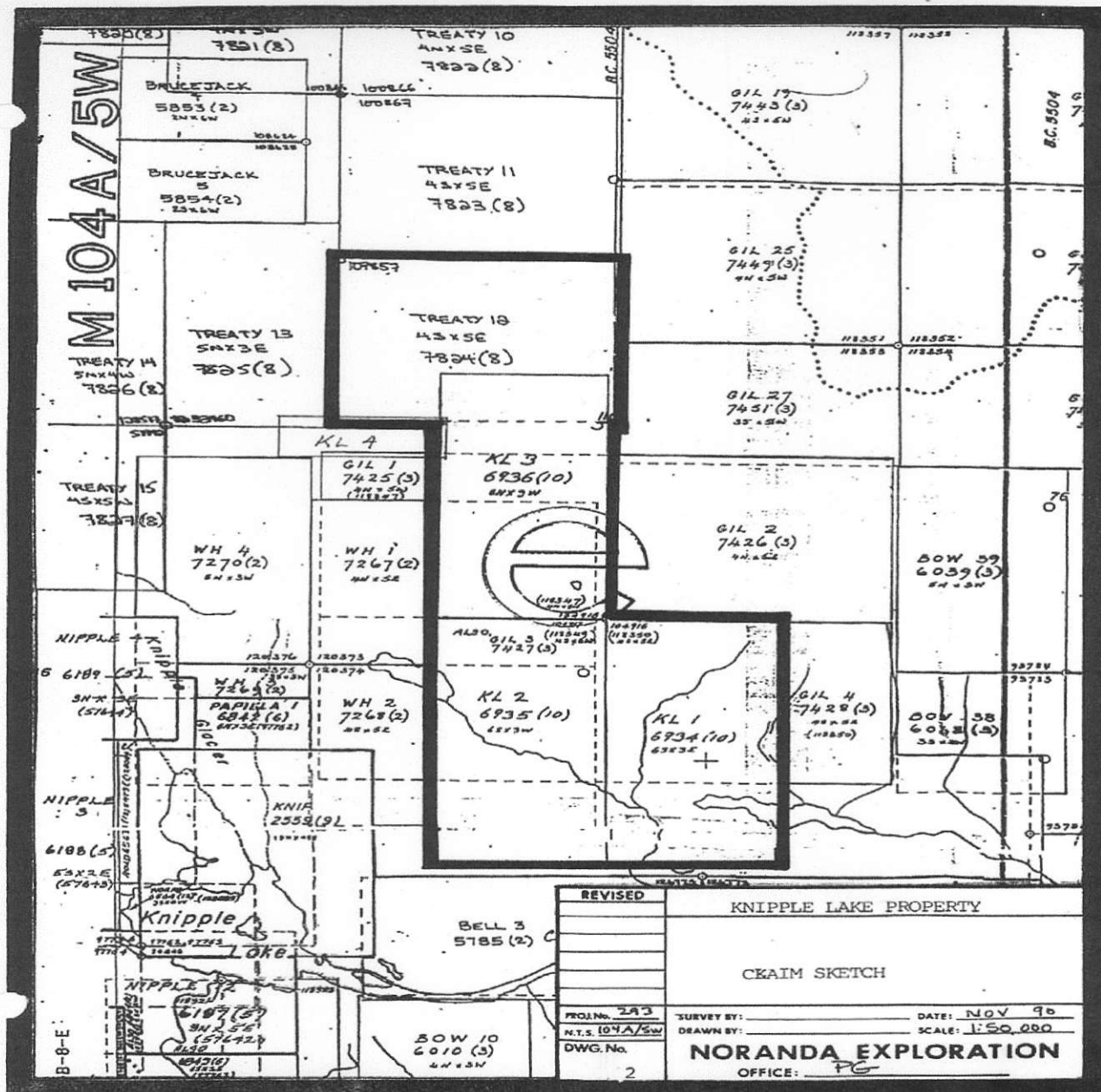
Hey Rod,

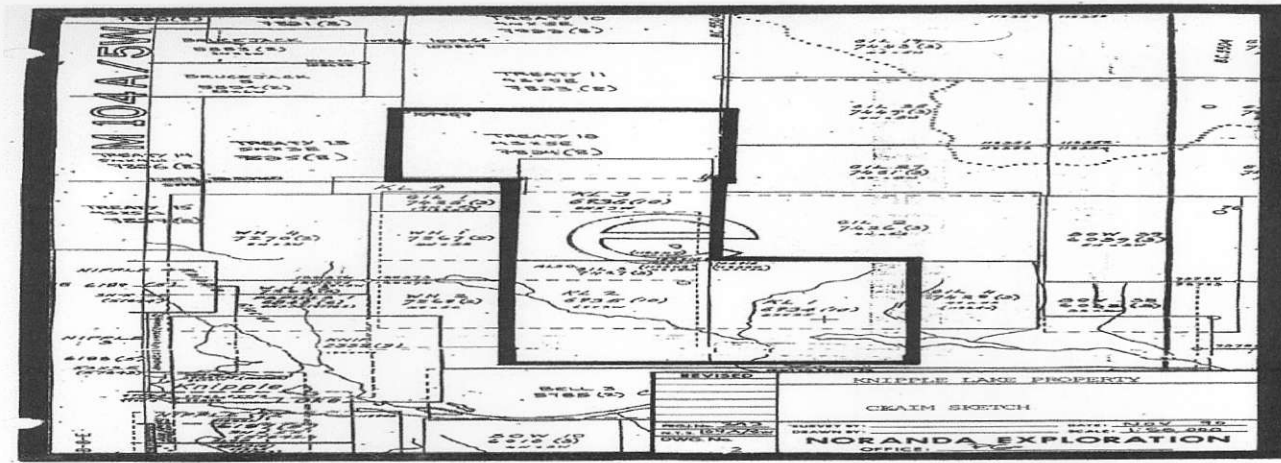
They collected a 10 ton sample from Knipple in 1988. They were intending on a 25T sample but looks like it fell short because of weather.

The results are listed in pages 13 -14 (actual 6 & 7) in the following ARIS report  
<http://www.em.gov.bc.ca/DL/ArisReports/17694.PDF>

Looking at Noranda's 1991 drilling report noted on the Minfile, this work was done much east of the actual showing over in your claims area.

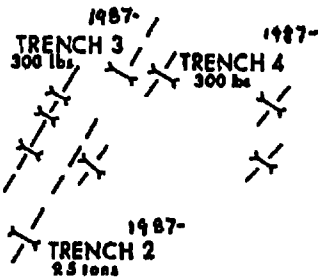
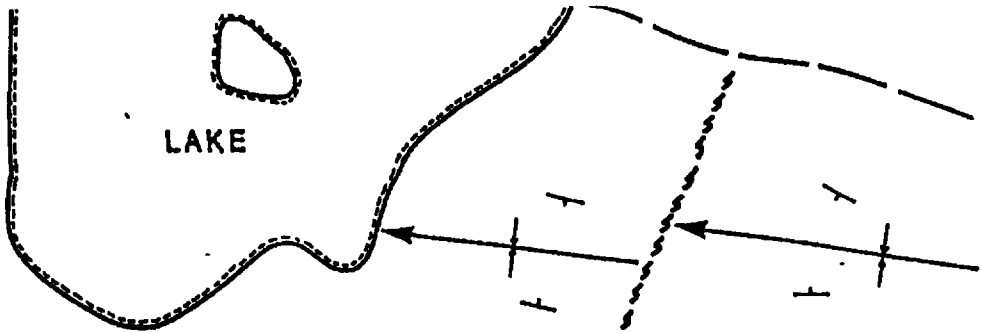
The results are a little misleading being that the work was done miles away and lumped into the minfile.











I think this thing needs drilled buddy!

Cheers,  
Kelly



**REFERENCE POINT**  
KNIP Legal Post is approx. 430m to the west  
and 750m to the south.

**KNIPPLE LAKE**

- LEGEND**
-  Trench Symbol
  -  Vein Direction
  -  Fault
  -  Bedding
  -  Syncline
  -  300 lbs. Amt. of High Grade Material Collected

**WORK COMPLETED 1987**



1 : 2000

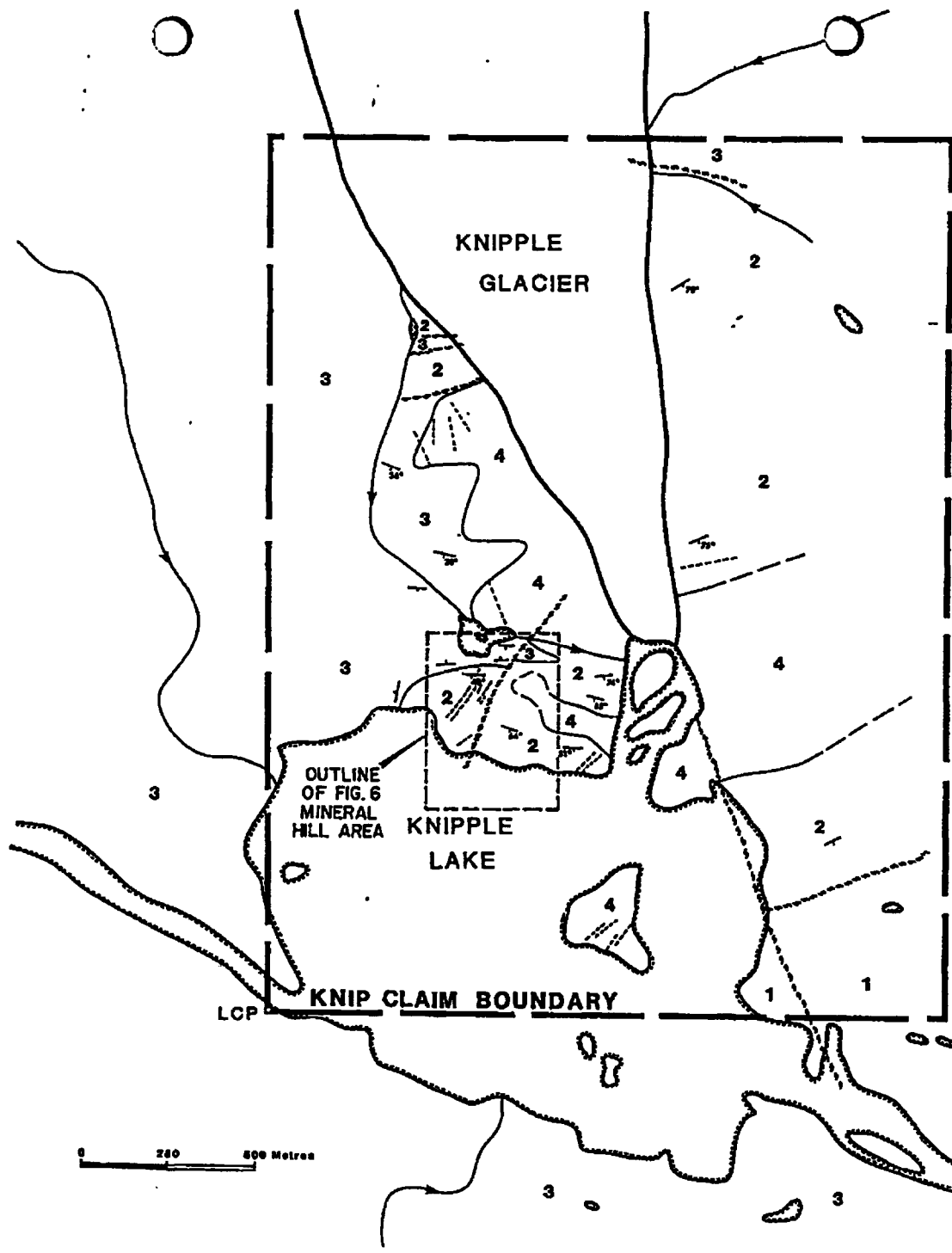
Fig 6

<b>CRYSTAL COVE RESOURCES LTD.</b>	
KNIP CLAIM	
TRENCH LOCATION MAP NTS 104 A/SW 26	
SKEENA M.D., B.C.	
Scale: 1:2000	Date: Jan. 1988

# Knipple L. veins

Sample number	Width of sample (m)*	Copper %	Lead %	Zinc %	Silver oz/t	Silver g/t
KL-GS-04	0.46	1.52	37.98	1.63	35.14	1092.97
KL-GS-05	0.52	0.95	3.10	13.88	17.07	530.94
KL-GS-06	0.61	0.51	15.19	12.22	20.09	624.87
KL-GS-07	0.61	0.24	21.84	4.73	30.01	933.42
KL-GS-08	0.69	0.35	3.57	18.76	7.30	227.06
KL-GS-09	0.86	0.32	11.42	8.34	12.04	374.49
KLO-GS-10	0.86	0.06	8.59	3.84	11.21	382.30

\* Includes 5 cm of wall rock on both ends of channel sample



**LEGEND**

**EOCENE**

4 FELDSPAR PORPHYRY INTRUSIVE

**MIDDLE JURASSIC**

3 SALMON RIVER FORMATION: SILTSTONE, SANDSTONE, GREYWACKE, ARGILLITE AND CONGLOMERATE

2 BETTY CREEK FORMATION: GREEN, RED, PURPLE AND BLACK VOLCANIC BRECCIA, CONGLOMERATE, SANDSTONE AND SILTSTONE

**LOWER JURASSIC**

1 UNUK RIVER FORMATION: GREEN, RED, AND PURPLE VOLCANIC BRECCIA, CONGLOMERATE, SANDSTONE AND SILTSTONE

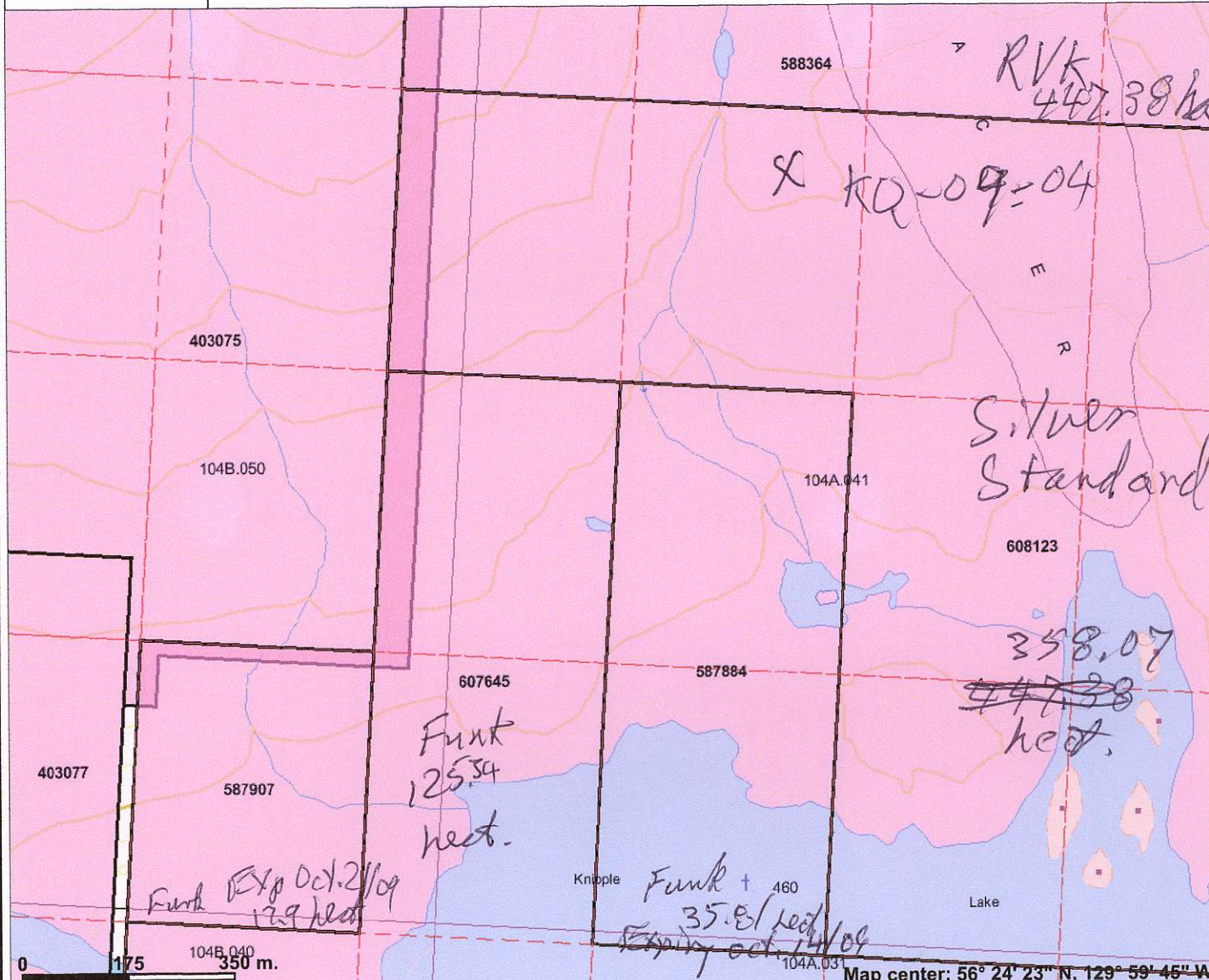
**SYMBOLS**

- QUARTZ + CARBONATE VEIN
- FAULT
- GEOLOGICAL CONTACT (DEFINED, APPROXIMATE)
- - - - - BEDDING
- → → → → STREAM
- ~~~~~ SHORELINE

**Fig. 4 -- PROPERTY GEOLOGY**

(After C. Hrkac, 1985  
& K. Konkin, 1987)

# Knipple L. cl-Oct. 2, '09



### Legend

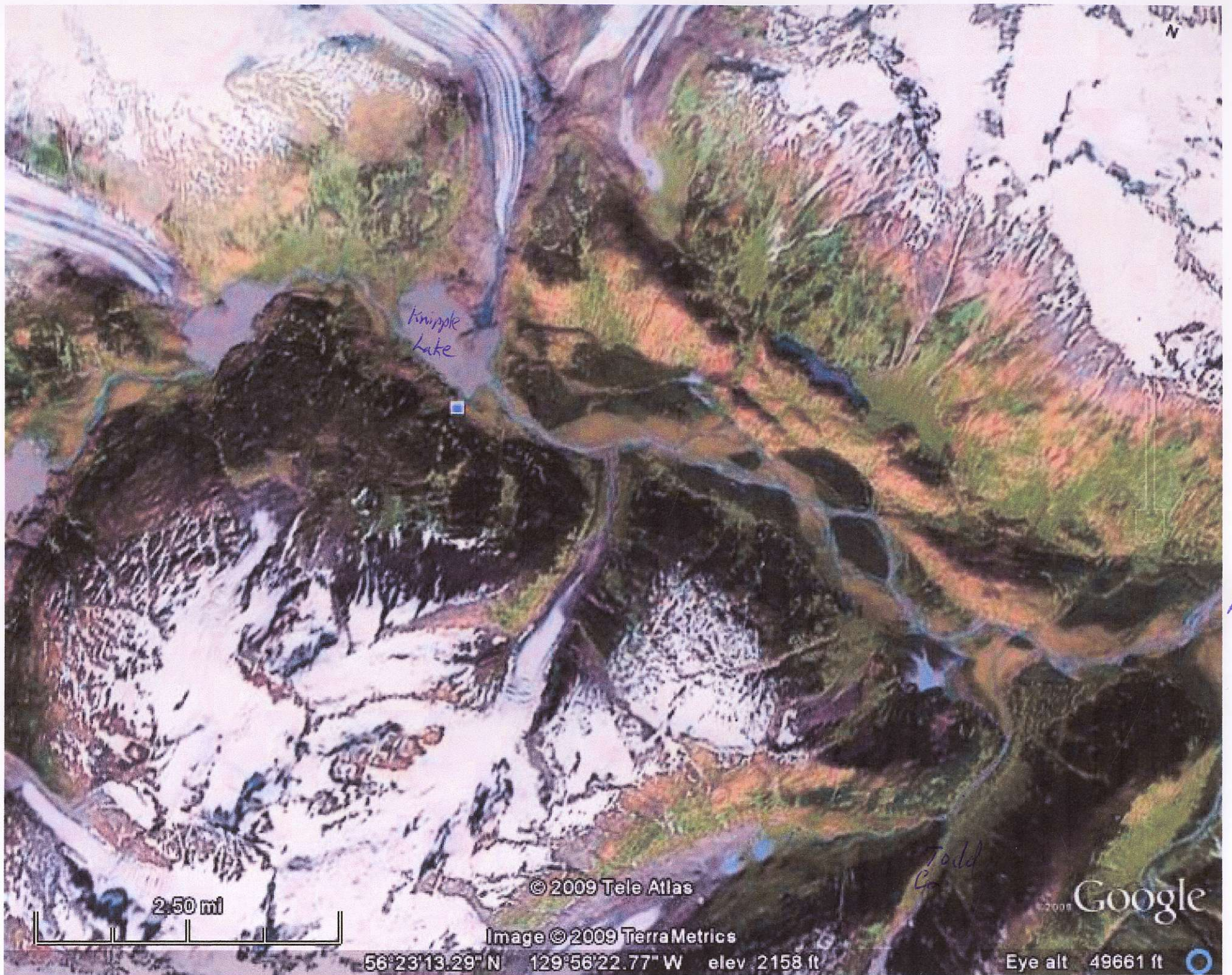
- Indian Reserves
- National Parks
- Conservancy Areas
- Parks
- MTO Grid (MTO)
- Blocked by MEM
- Other
- Mineral Tenure (current)
  - Mineral Claim
  - Mineral Lease
- Mineral Reserves (current)
  - Placer Claim Designation
  - Placer Lease Designation
  - No Staking Reserve
  - Conditional Reserve
  - Release Required Reserve
  - Surface Restriction
  - Recreation Area
  - Others
- Integrated Cadastral Fabric
- Survey Parcels
- BCGS Grid
- Contours (TRIM)
  - Contour - Index
  - Contour - Index.Indefinite
  - Contour - Index.Depression
  - Contour - Index.Depression Indefinite
  - Contour - Intermediate
  - Contour - Intermediate.Indefinite
  - Contour - Intermediate.Depression
  - Contour - Intermediate.Depression Indefinite
- Area of Exclusion
- Aerial Photo

Scale: 1:10,000

This map is a user generated static output from an Internet mapping site and is for general reference only. Data layers that appear on this map may or may not be accurate, current, or otherwise reliable. THIS MAP IS NOT TO BE USED FOR NAVIGATION.

Notes: KQ-09-04

Map center: 56° 24' 23" N, 129° 59' 45" W



Kripple Lake

Bowser

Todd Co

© 2009 Tele Atlas

Image © 2009 Terra Metrics

Google

2.50 mi

56°23'13.29" N 129°56'22.77" W elev 2158 ft

Eye alt 49661 ft