

803523

KNIPPLE LAKE PROJECT SUMMARY

LOCATION AND ACCESS

N.T.S. mapsheet 104 A/5. Approx. 60 km north of Stewart, 25 km west of Stewart-Cassiar Highway, and 1 km north of the Bowser River airstrip. Access is by helicopter.

TARGET

Structural or volcanogenic high-grade Au deposit +/- Ag, Cu, Pb, and Zn similar to the Snip or Eskay Creek.

STATUS

KL 1 to 3 claims : 100% owned by Noranda
Treaty 12 claim : Noranda can earn 100% subject to 2% NSR

HISTORY

KL claims staked in 1988, Treaty 12 claim optioned in 1990. Preliminary prospecting and geochem surveys in 1989 totalled \$5,000. Mapping, soil geochem, mag and HLEM surveys in 1990 totalled \$100,000.

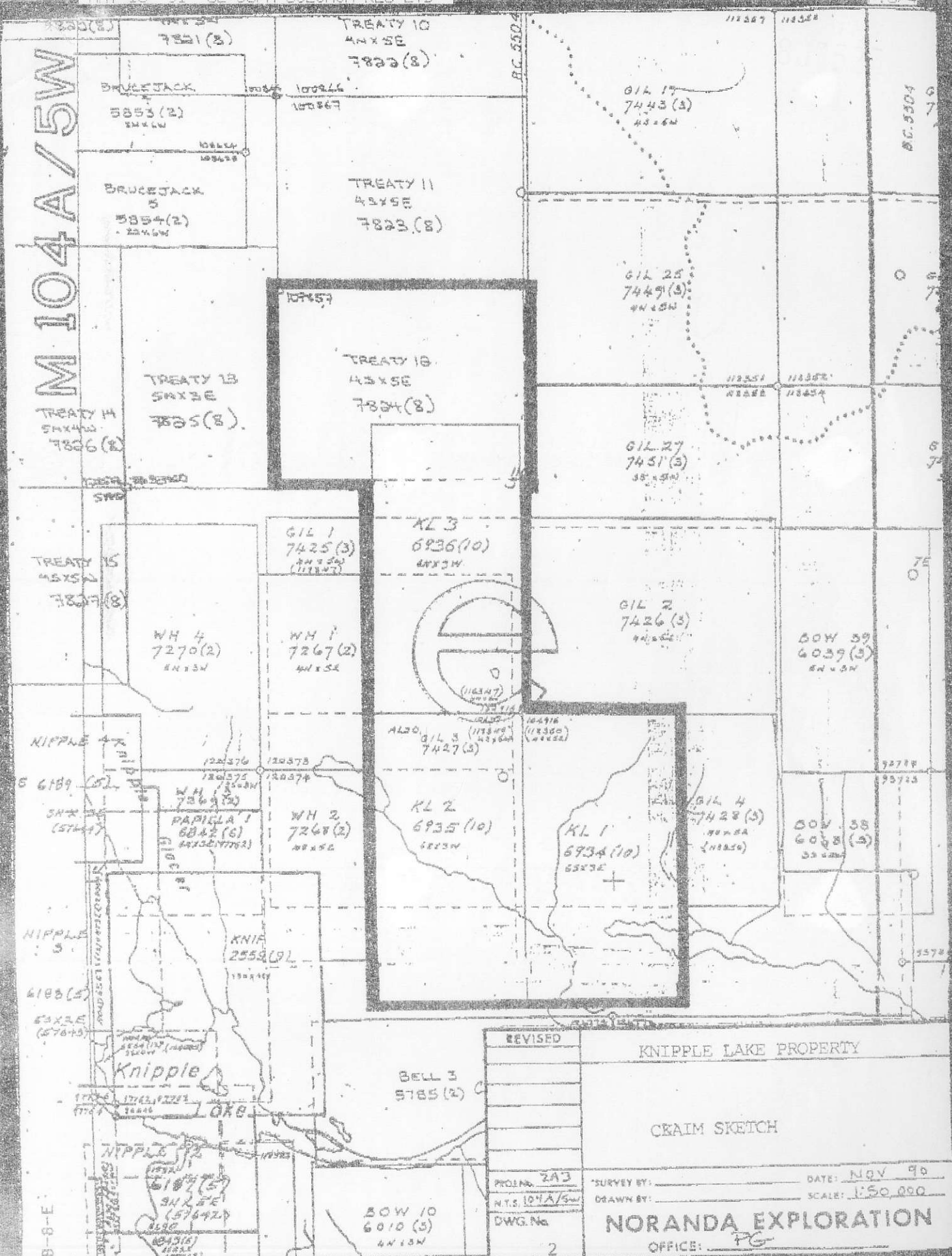
DESCRIPTION

Underlain by Lower-Mid Jurassic Hazleton Group andesites, agglomerates, felsic volcanics (Mt. Dilworth Fm.), and black argillites (Eskay Creek Facies). A boulder field at the base of an overburden and meadow covered slope contains over one hundred boulders of quartz-calcite breccia and vein material containing coarse sphalerite, galena, pyrite and chalcopyrite. Of 48 samples analyzed, all have anomalous gold values, 18 have values greater than 4 gm/t Au and 8 are greater than 8.5 gm/t Au. Upslope of the boulders only minor mineralization has been located in bedrock however several multi-element geochem anomalies have been outlined and require testing.

1991 PROPOSED PROGRAM

A phase I program of target delineation using airborne EM and magnetic, IP and trenching surveys would be followed by a phase II program of diamond drilling if warranted. Total expenditures of \$150,000 are proposed.

M 104 A / 5W



REVISED	KNIPPLE LAKE PROPERTY	
	CRAIM SKETCH	
PROJ. No. 2A3	SURVEY BY: _____	DATE: NOV 90
N.T.S. 104A/5W	DRAWN BY: _____	SCALE: 1:50,000
DWG. No. 2	NORANDA EXPLORATION	
	OFFICE: PG	

B-8-E

VANCO 11922

