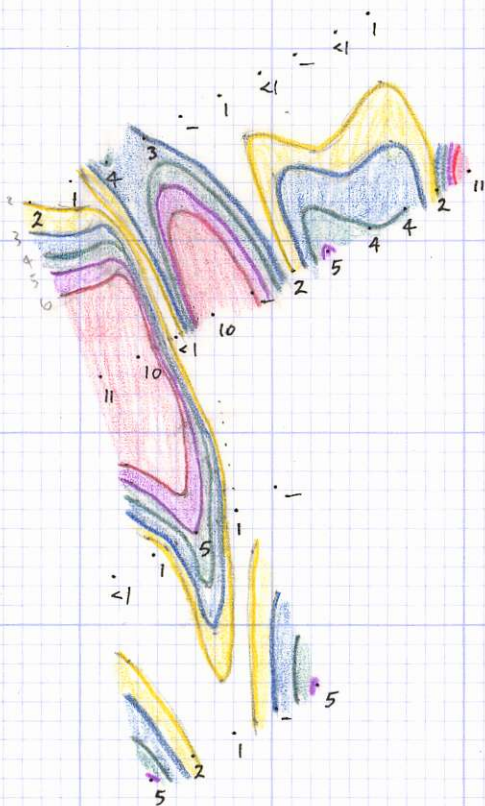


Telkwa  
mtns.  
93L

803159

Denny's Creek  
Dominion  
Basin

RANGE	NO. OF ANAL.	ppm As	in B horizon
<1	4		
1	6	50%	
2	4		
3	1		
4	3		
5	4		
6	—		
7	—		
8	—		
9	—		
10	2	} 15%	
11	2		
	<u>26</u>		



- >6
- 5-6
- 4-5
- 3-4
- 2-3

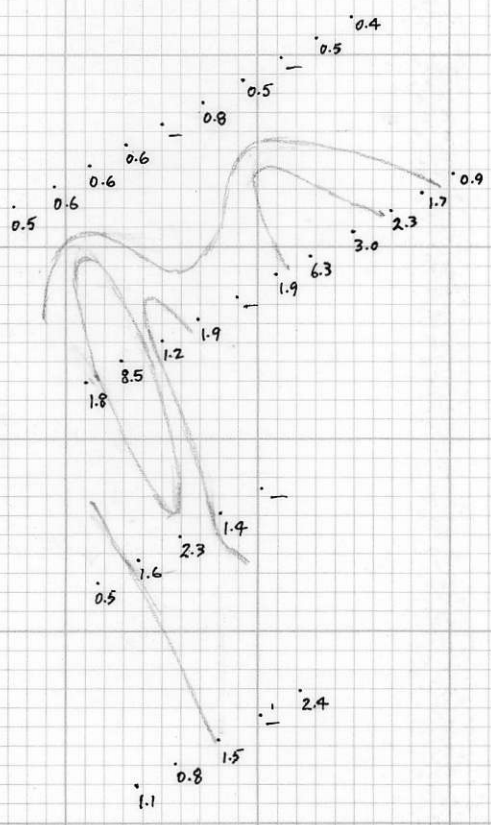
>5

3-5

<3

RANGE	NO. OF ANAL
0 - 0.5	5
0.6 - 1.0	6 50%
1.1 - 1.5	<u>4</u>
1.6 - 2.0	5
2.1 - 2.5	3
2.6 - 3.0	1 } 10%
> 3.0	2 }
	<u>26</u>

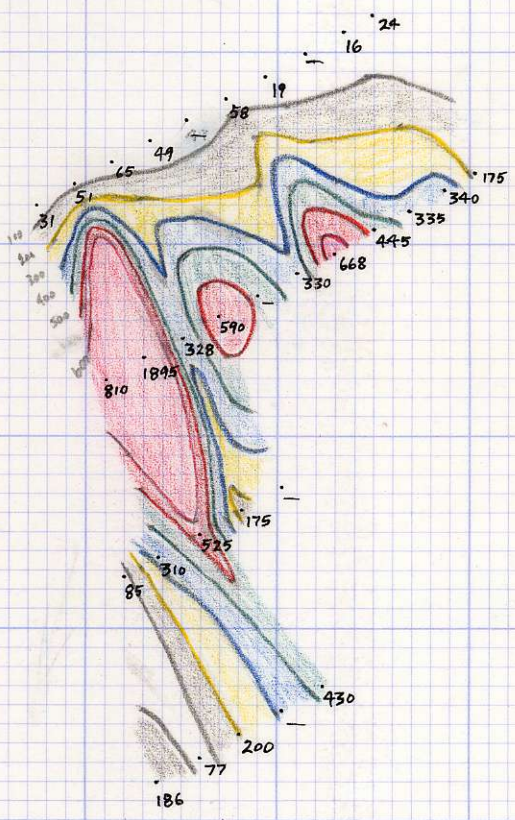
ppm Ag in B horizon



> 2.5  
 1.5 - 2.5  
 < 1.5

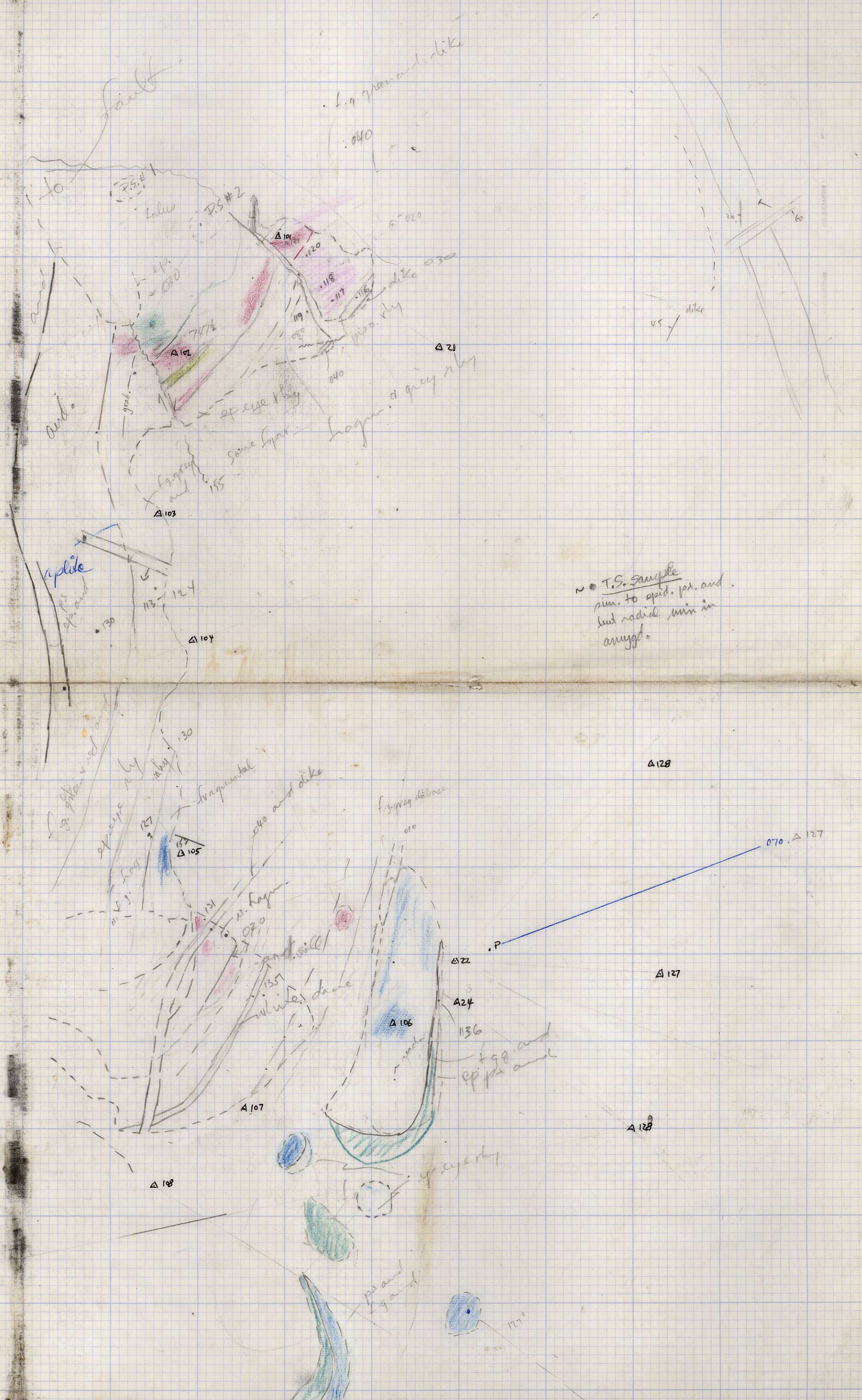
ppm Cu in B horizon

RANGE	NO. OF ANAL.	
0-50	5	
51-100	5	50%
101-150	—	
151-200	4	—
201-250	—	
251-300	—	
301-350	5	
351-400	—	
401-450	2	
451-500	—	
501-550	1	
551-600	1	
>600	3	10%
	<u>26</u>	



- >600
- 500-600
- 400-500
- 300-400
- 200-300
- 100-200

>600  
 201-600  
 0-200



Fault

L.g. monomictic

to

and

ep. eye rhy

ep. eye rhy

ep. eye rhy

ep. eye rhy

ep. eye rhy

ep. eye rhy

ep. eye rhy

ep. eye rhy

ep. eye rhy

T.S. sample  
sum. to epid. px. and  
but radial min in  
amygd.

126

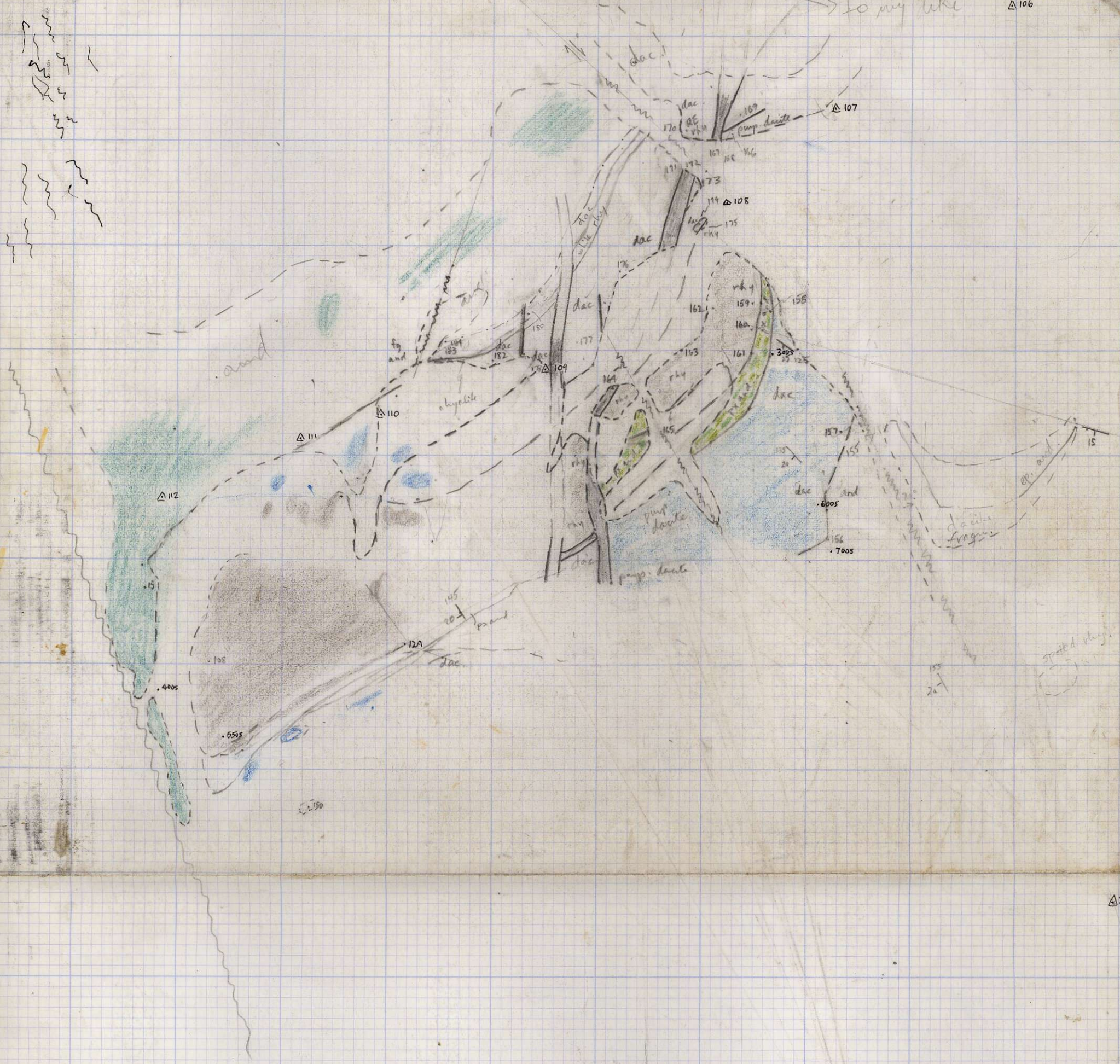
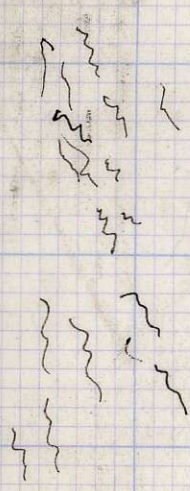
△ 105

△ 22

△ 23

△ 106

to my like



△ 24

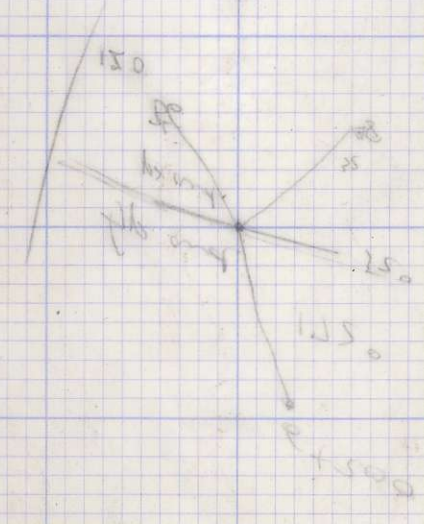
△ 116

△ 117

△ 119

079  
000  
000  
000

----- onyxob



red green grey  
 hydrite  
 small (at eyes)  
 purple shale  
 black

251-50  
 201-100  
 201-100  
 201-100  
 201-100