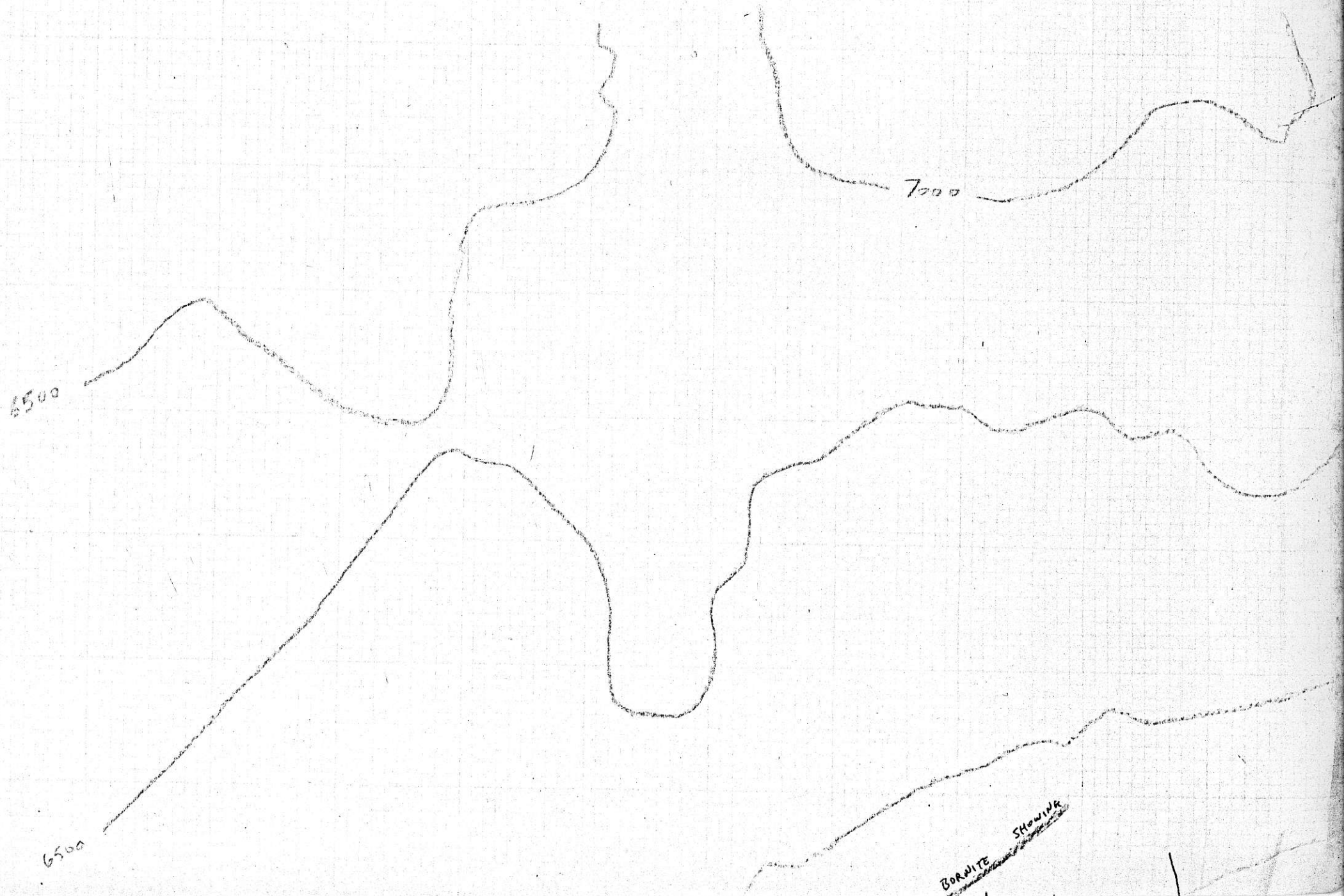


STREAM SEDIMENT SAMPLING

DENYS CR. - DOMINION BASIN, TELKWA RANGE, B.C.

803157



6500

6000

5500

5000

BORNITE Stream

SCHLESIER'S CREEK

CARRIE CR.

SNOWFIELD CR.

236/126/2/1.6 042

020 75/135/2/0.5

021 270/115/2/1.0

022 68/160/2/0.9

351/199/2/2.841

023 22/248/n.s./0.8

024 61/140/4/0.7

OLD CAMP

029 64/153/n.s./0.6

025 104/177/2/1.0

026 N.S.

040 77/153/2/1.2

027 33/82/2/0.7

028 97/155/2/0.8

029 44/129/2/0.6

149/200/n.s./1.0

80/227/2/0.89

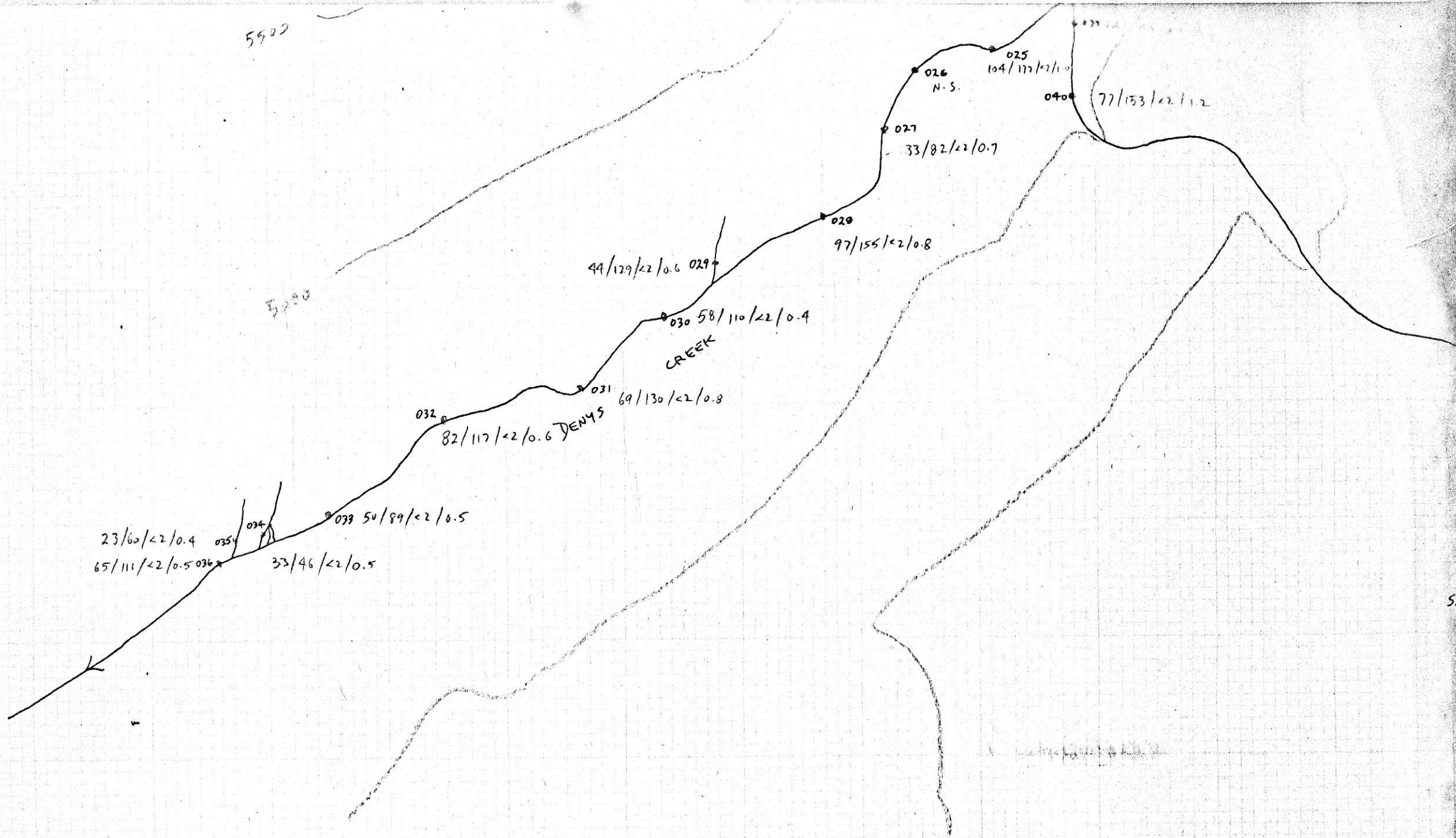
52/102/2/0

038

016 101

017

97/166/



5900

5000

23/60/2/0.4

65/111/2/0.5

035

034

33/46/2/0.5

039 50/89/2/0.5

032

82/117/2/0.6 DENYS

031

69/130/2/0.8

030

58/110/2/0.4

CREEK

44/129/2/0.6

029

020

97/155/2/0.8

027

33/82/2/0.7

026

N.S.

025

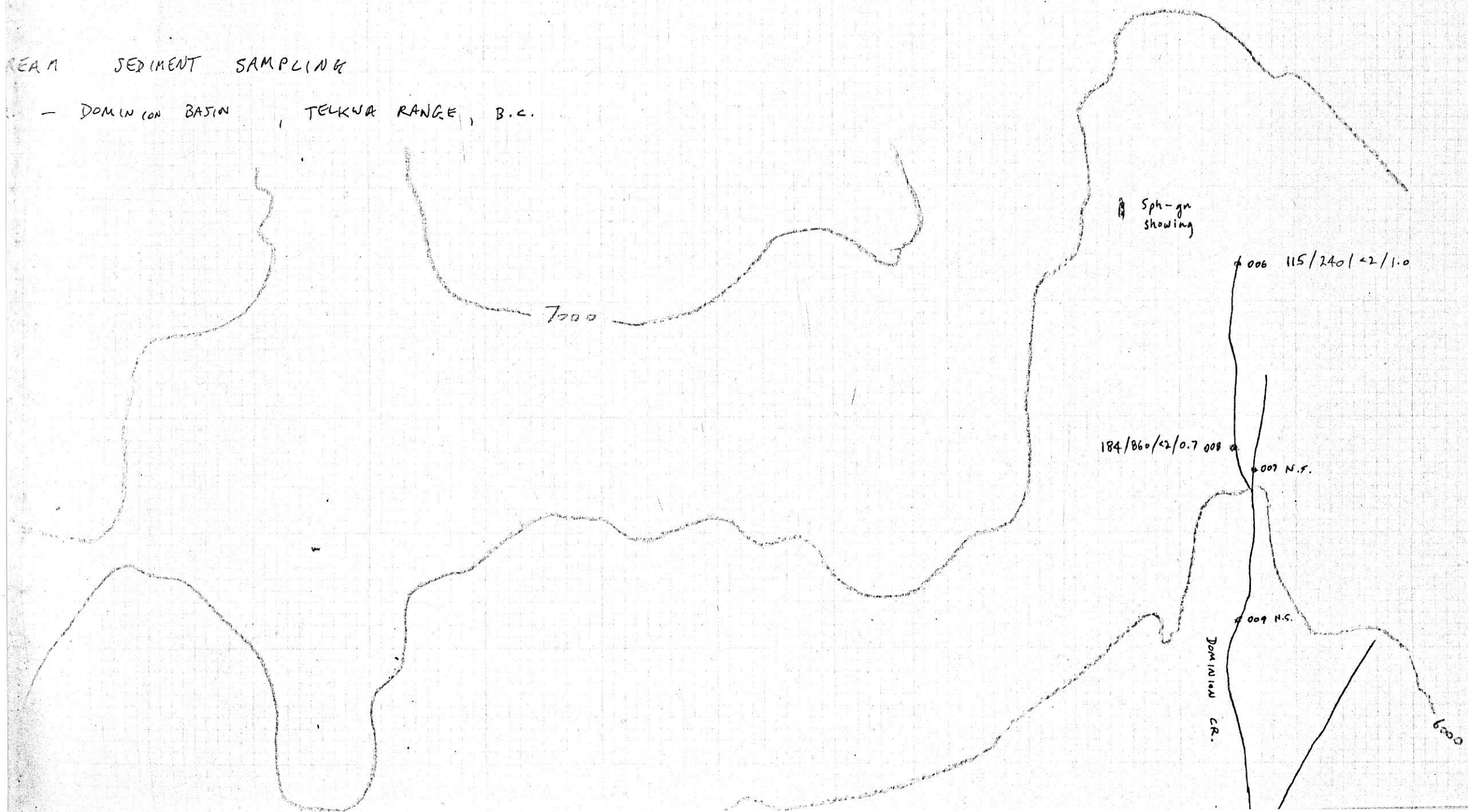
104/117/2/1.0

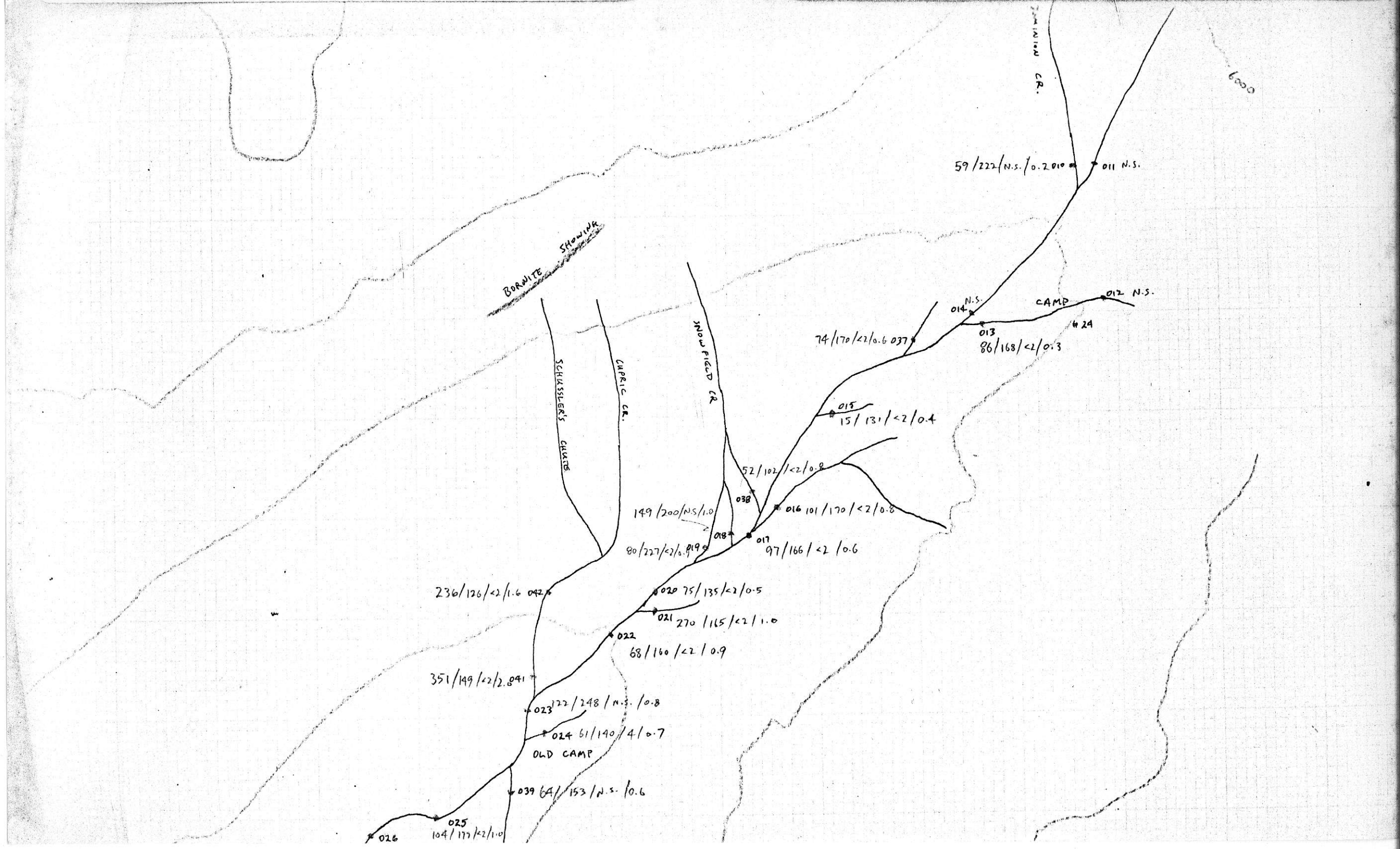
040

77/153/2/1.2

REAM SEDIMENT SAMPLING

- DOMINION BASIN, TELKWA RANGE, B.C.





JAMISON CR.

6000

59/222/N.S./0.2010 * 011 N.S.

BORWITE SHOWING

CAMP

012 N.S.

014 N.S.

74/170/2/0.6 037

013
86/168/2/0.3

24

015
15/131/2/0.4

52/102/2/0.8

149/200/N.S./1.0

016 101/170/2/0.8

80/227/2/0.9

017
97/166/2/0.6

236/126/2/1.6 042

020 75/135/2/0.5

021 270/115/2/1.0

022
68/160/2/0.9

351/149/2/2.041

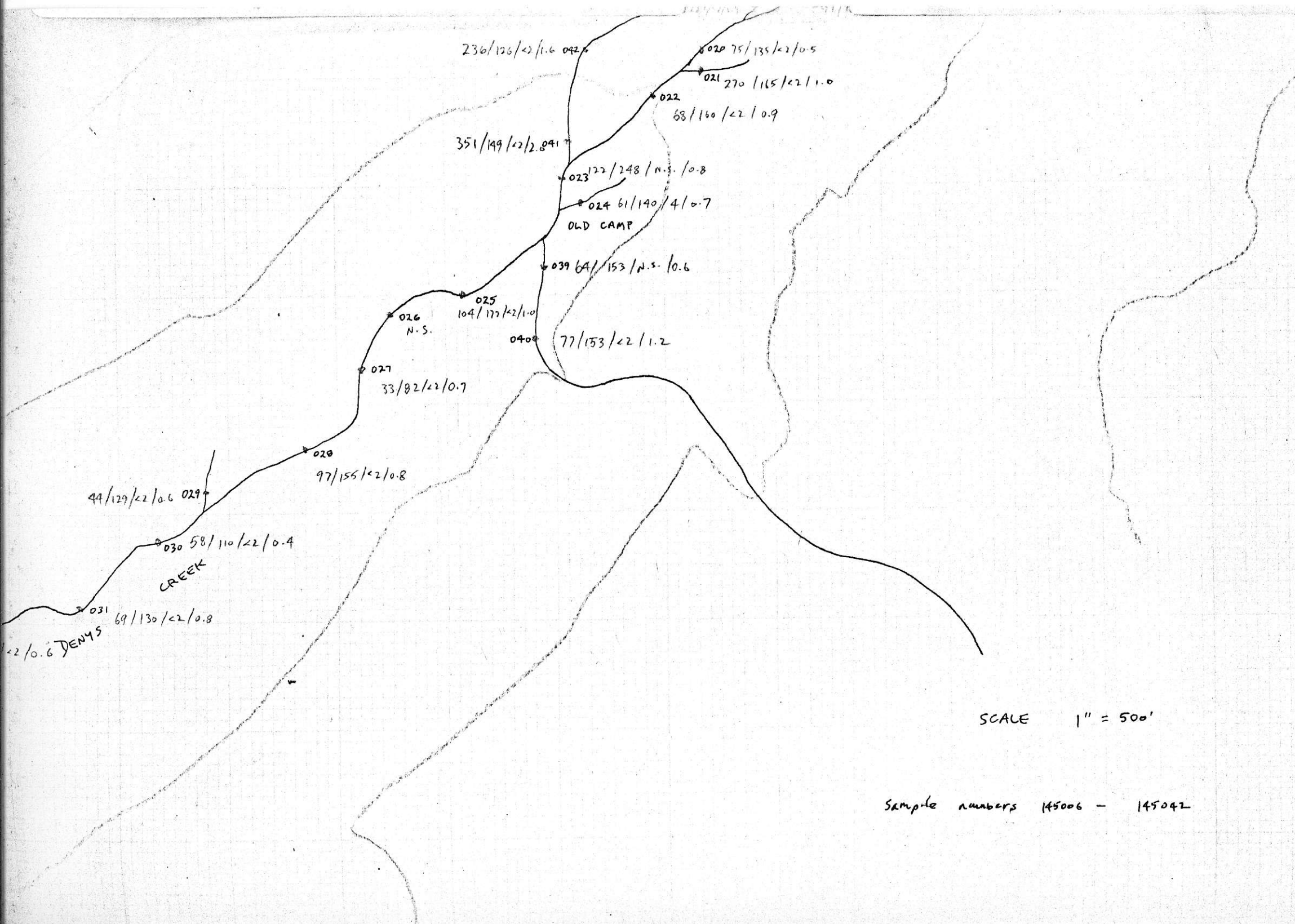
023 22/248/N.S./0.8

024 61/140/4/0.7

OLD CAMP

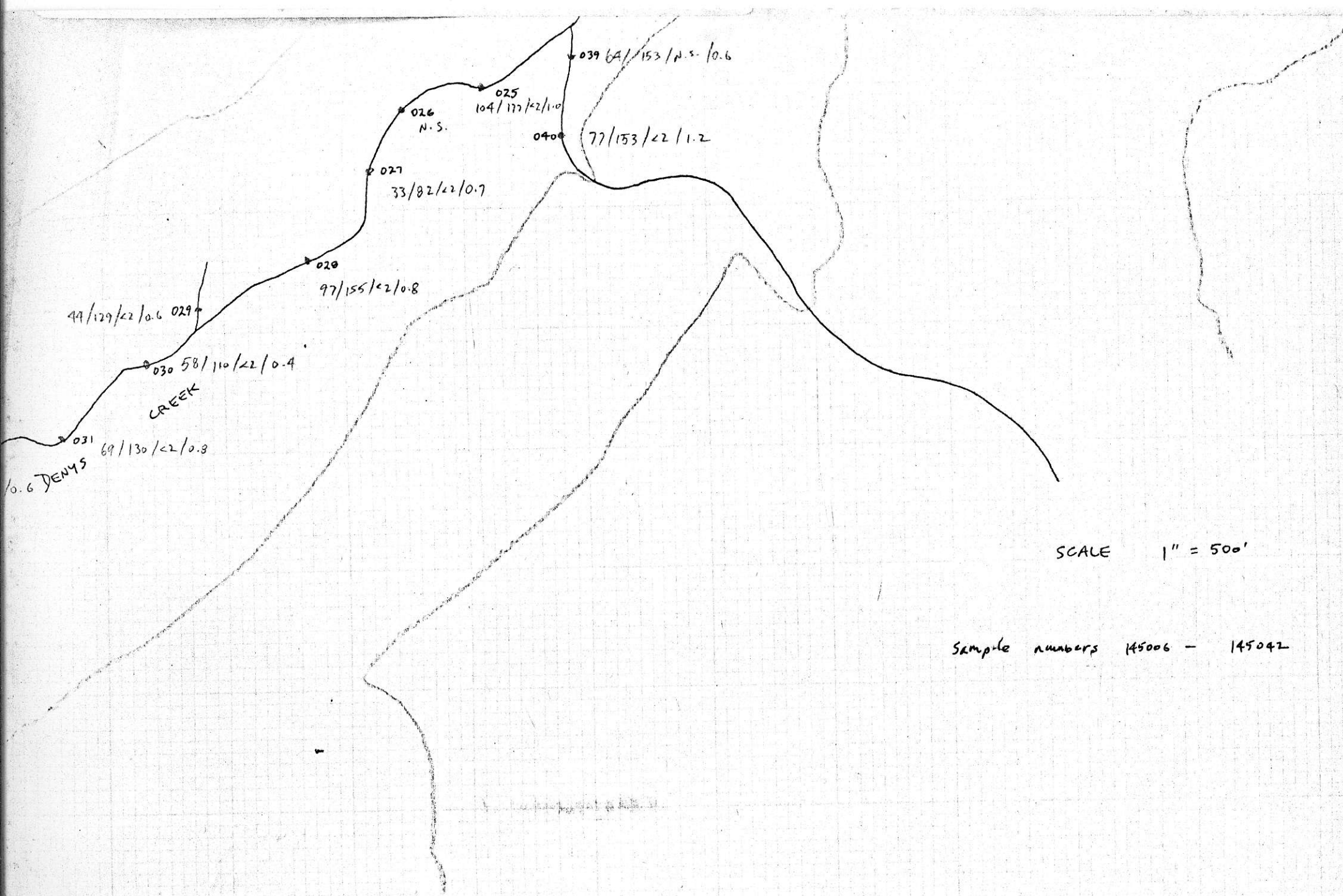
039 6A/153/N.S./0.6

026
025
104/177/2/1.0



SCALE 1" = 500'

Sample numbers 145006 - 145042



039 6A/153/p.s./0.6

025
104/177/22/1.0

026
N.S.

040 77/153/22/1.2

027
33/82/22/0.7

020
97/155/22/0.8

029 44/129/22/0.6

030 58/110/22/0.4

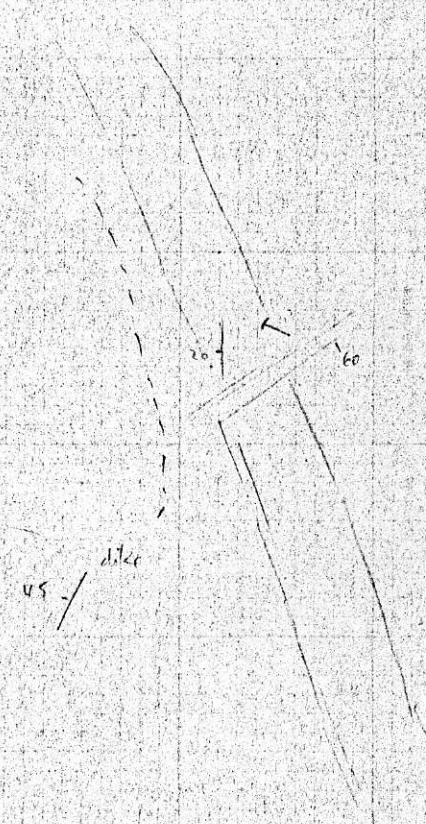
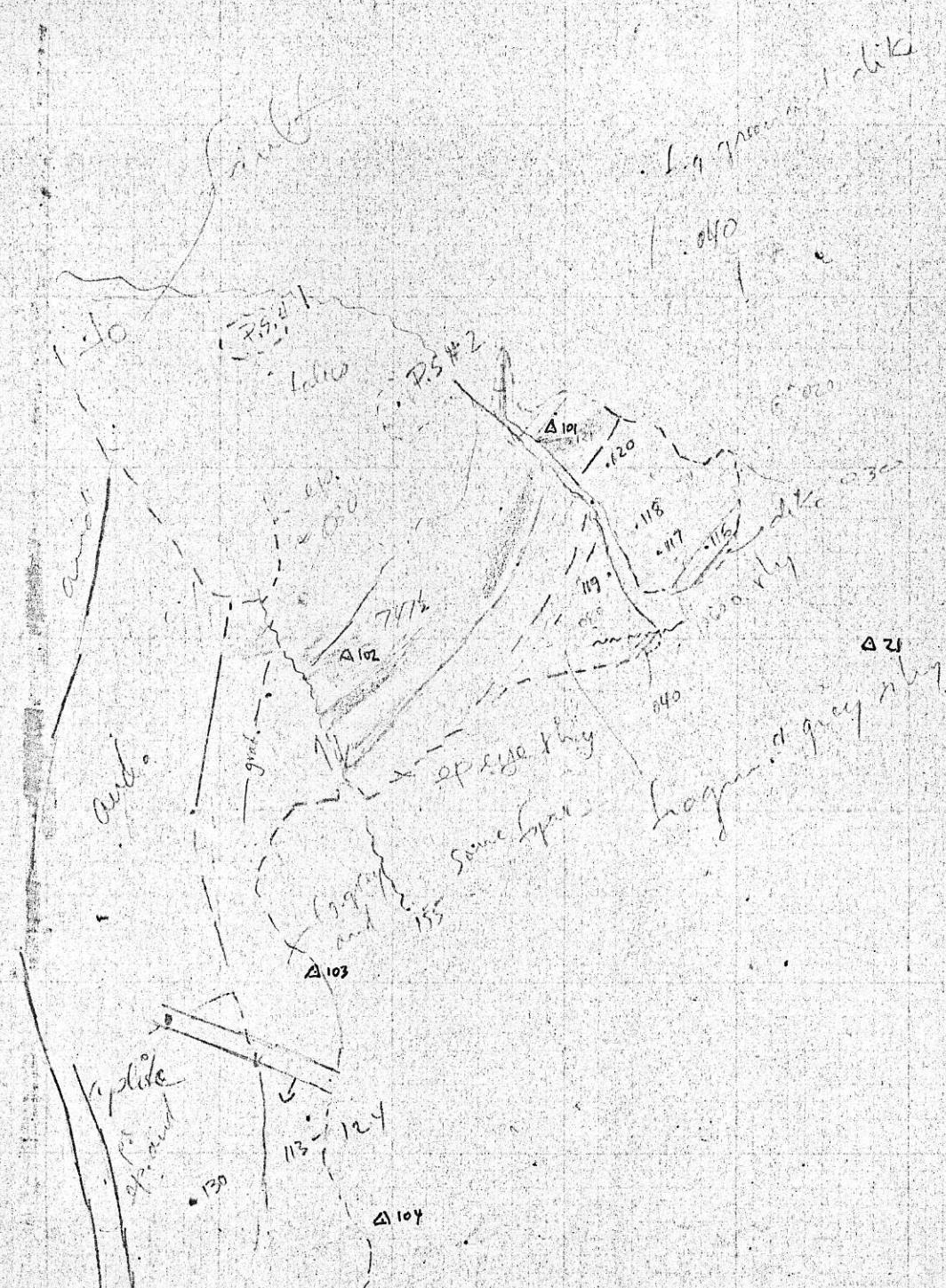
CREEK

031 69/130/22/0.3

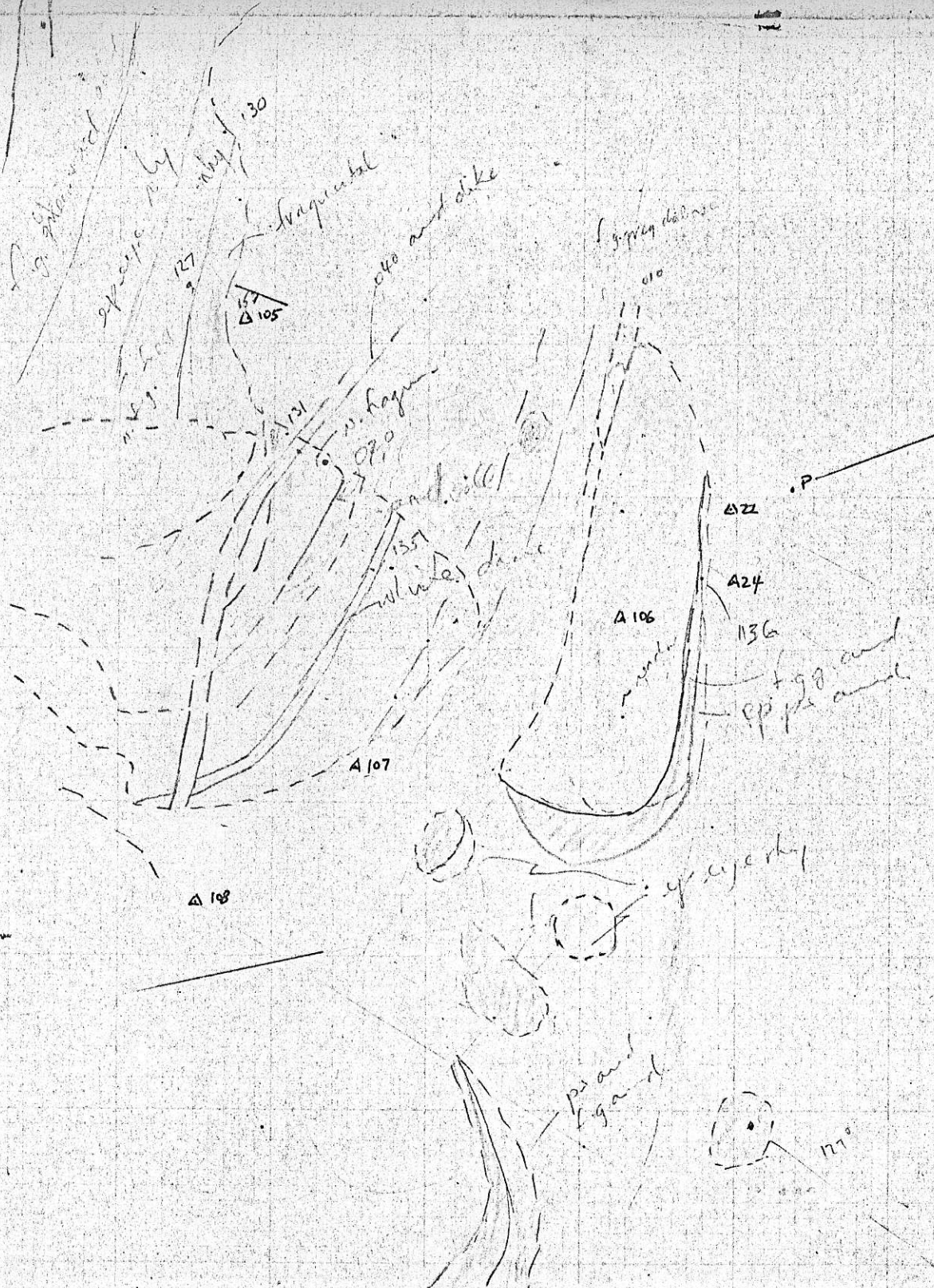
10.6 DENYS

SCALE 1" = 500'

Sample numbers 145006 - 145042



~ T.S. sample
 rim. to epid. ph. and
 but radial min in
 amygd.



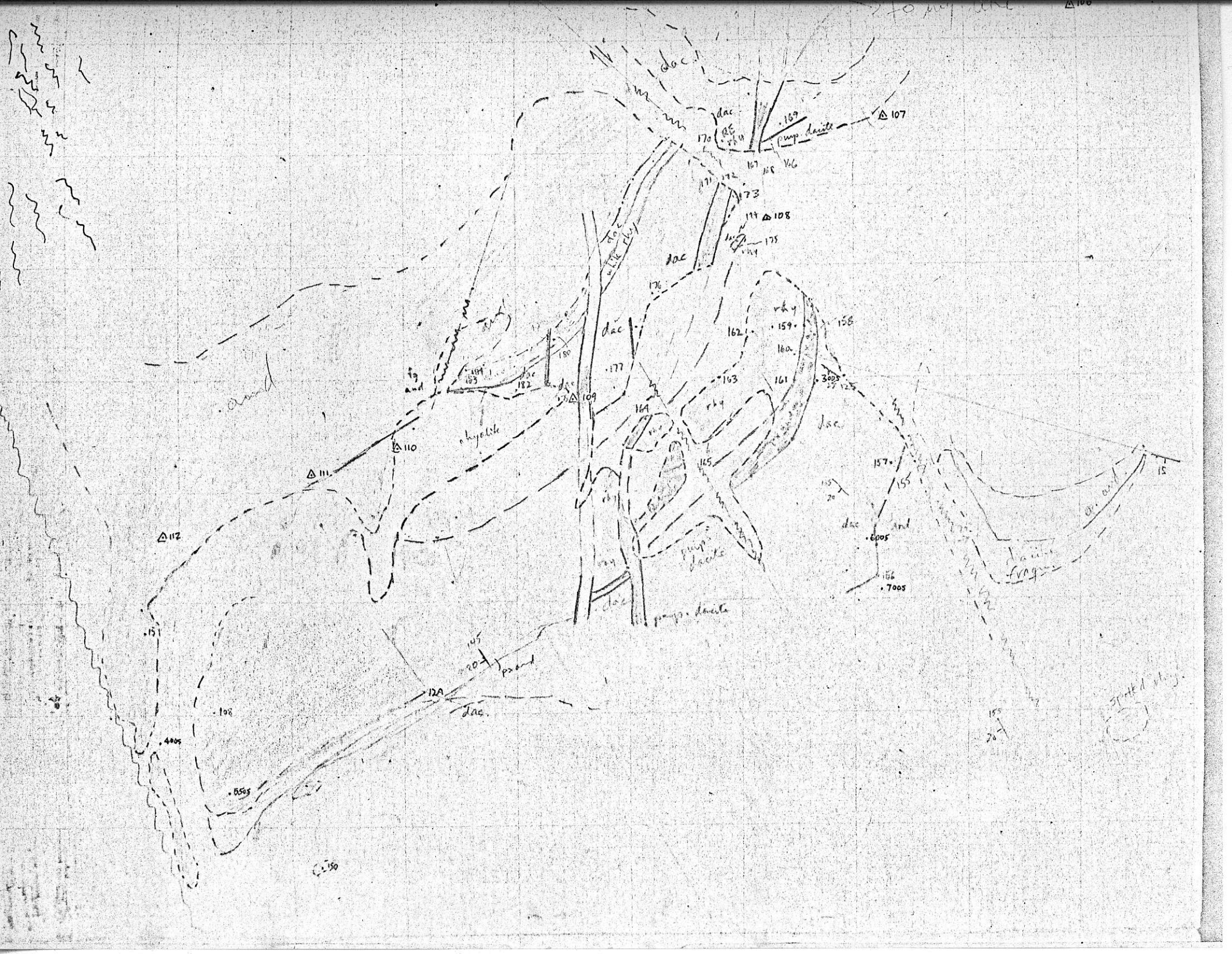
A 128

070 A 127

A 127

A 128

126





092

△ III

AIIZ

and

and

2400

4100

3550

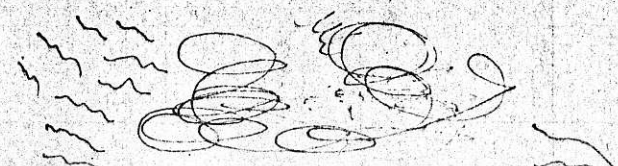
3100



2400

100
101
102
103
104
105
106
107
108
109
110
111
112
113
114
115
116
117
118
119
120
121
122
123
124
125
126
127
128
129
130
131
132
133
134
135
136
137
138
139
140
141
142
143
144
145
146
147
148
149
150
151
152
153
154
155
156
157
158
159
160
161
162
163
164
165
166
167
168
169
170
171
172
173
174
175
176
177
178
179
180
181
182
183
184
185
186
187
188
189
190
191
192
193
194
195
196
197
198
199
200

251 50



DENVY'S CREEK
 GEOLOGY OF THE DENVY'S CREEK - DOMINION BASIN AREA
 TELKWA RANGE, B.C.

①

LEGEND

SCALE: 1" = 200'



Volcanic Rocks

733	1	massive green andesite
738	2	pyroxene andesite
739 1/2	2a	epidotized pyroxene andesite
746 1/2	3	purple andesite lapilli tuft.
740	4	purple or grey dacite lapilli tuft <small>(locally agglomerate)</small>
734 1/2	5	grey feldspathic rhyolite
747 1/2	6	White Quartz eye rhyolite <small>Sp. a, spotted "epidote-eye" rhyolite</small>

Dikes or Sills

755	7	"diorite"
bluish white	8	felsite or aplite
756 1/2	9	angite laniprophyre
745 1/2	10	diabase
739	11	"andesite" <small>heads</small>

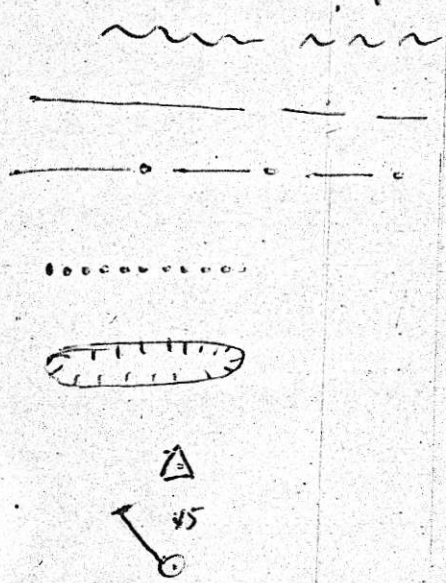
Mineralization

(2)

744 744 12/

~~barite, sphalerite,~~
bn barite
sp sphalerite
cp chalcopyrite
py py.
gn galena

fio



strike and dip of bedding

fault (Known, assumed)

geological contact (Known, assumed)

gradational geological contact & extent of outcrop

trench

survey station

drill hole with dip, projected to surface

Sta	Horiz. Angle H-A	Bearing	Horiz. dist H-D ft.	N Lat	E Dep	Elev
Claim post No 2 ✓ No 3 ✓		T 11° 38' W	328.76	166,174.47 ✓	46,648.62 ✓	5140.42
△ No 8 ✓		N 1° 38' E W		168,562.03	46,580.54	5993.49
△ No 21 ✓		S 1° 38' E E		171,613.37	49,294.96	6392.50
△ No 22 ✓		- 11 -		170,203.96	49,335.14	6154.23
△ No 24 ✓		- 11 -		168,342.07	49,388.23	5600.99
△ No 26 ✓		- 11 -		167,711.71	49,406.20	5870.68

B.S	STA	F.S	I Traverse From	△ No 21	to	△ No 8
26	21	101 ✓	125° 10'	455.00		6024.5
		102 ✓	90° 00'	612.00		6669.5
		103 ✓	60° 50'	755.00		6568.5
		104 ✓	41° 55'	880.00		6515.5
		105 ✓	28° 46'	1305.00		6475.5
		106 ✓	5° 43'	1558.00		6206.0
21	106	107 ✓	235° 50'	3940.00		6153.0
		108 ✓	231° 34'	666.00		6169.0
		109 ✓	228° 57'	1134.00		6150.0
106	109	110 ✓	198° 22'	316.00		6128.0
		111 ✓	198° 53'	476.00		6123.0
		112 ✓	199° 00'	775.00		6139.0
109	112	113 ✓	178° 47'	361.00		6033
		114 ✓	167° 34'	440.00		6053
		115 ✓	169° -	1164.00		5993

65' 6.48

2.6
16

2.5
12

4
16

B-S	Sta	F-S	H-A	H-D	EIV				
21	26	116	272°09'	463.00	5768'				
21	26	117	241°43'	394.00	5780'				
26	117	118	159°21'	582.00	5712'				
26	117	119	176°37'	650.00	5635'				
21	26	120	91°41'	278.00	5941'				
117	120	121	132°19'	242.00	5969'				
117	120	122	203°37'	498.00	6152'				
117	120	123	174°28'	985.00 985.00	6265'				
117	120	124	149°54'	1010.00	6146'				
120	124	125	121°53'	528.00	6202'				
124	125	126	200°16'	860.00 ✓	6320'				
125	126	127	130°45'	766.00 ✓	6352'				
126	127	128	222°07'	487 ✓	6475'				
126	127	129	54°56'	359 ✓	6221				