



Energy, Mines and
Resources Canada
Geological Survey
of Canada Sector

Énergie, Mines et
Ressources Canada
Secteur de la Commission
géologique du Canada

802700
Unuk



DATE: May 31/91

TO: Jenna Hardy
Granges
Vancouver
fax (604) 687-8699

FROM: Rod Kirkham

MINERAL DEPOSITS SUBDIVISION
601 BOOTH STREET, ROOM 686
OTTAWA, ONTARIO
K1A 0E8

FAX: (613) 996-9820

TELEPHONE: (613) 995-4656

NUMBER OF PAGES INCLUDING THIS PAGE: 5

MESSAGE/SPECIAL INSTRUCTIONS:

Jenna,
The flight lines for 1989 low-level photography
(1:8000 black & white) & 1:5000 Infra-red). Unfortunately
these are not very good copies but hopefully
you can read them & see the photos on your
property. There is much overlap on these sheets.

Best regards,
Rod

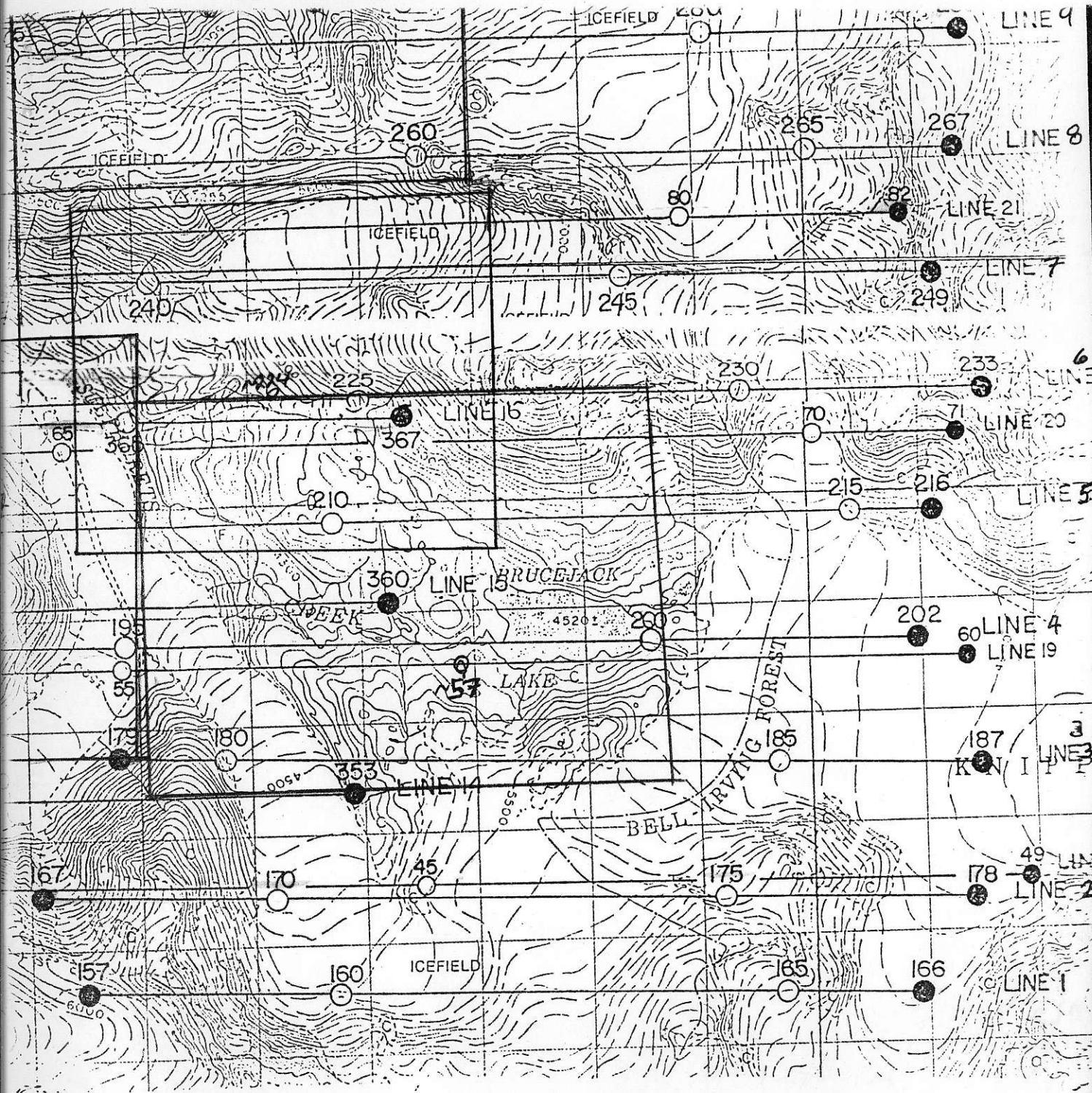


PHOTO INDEX

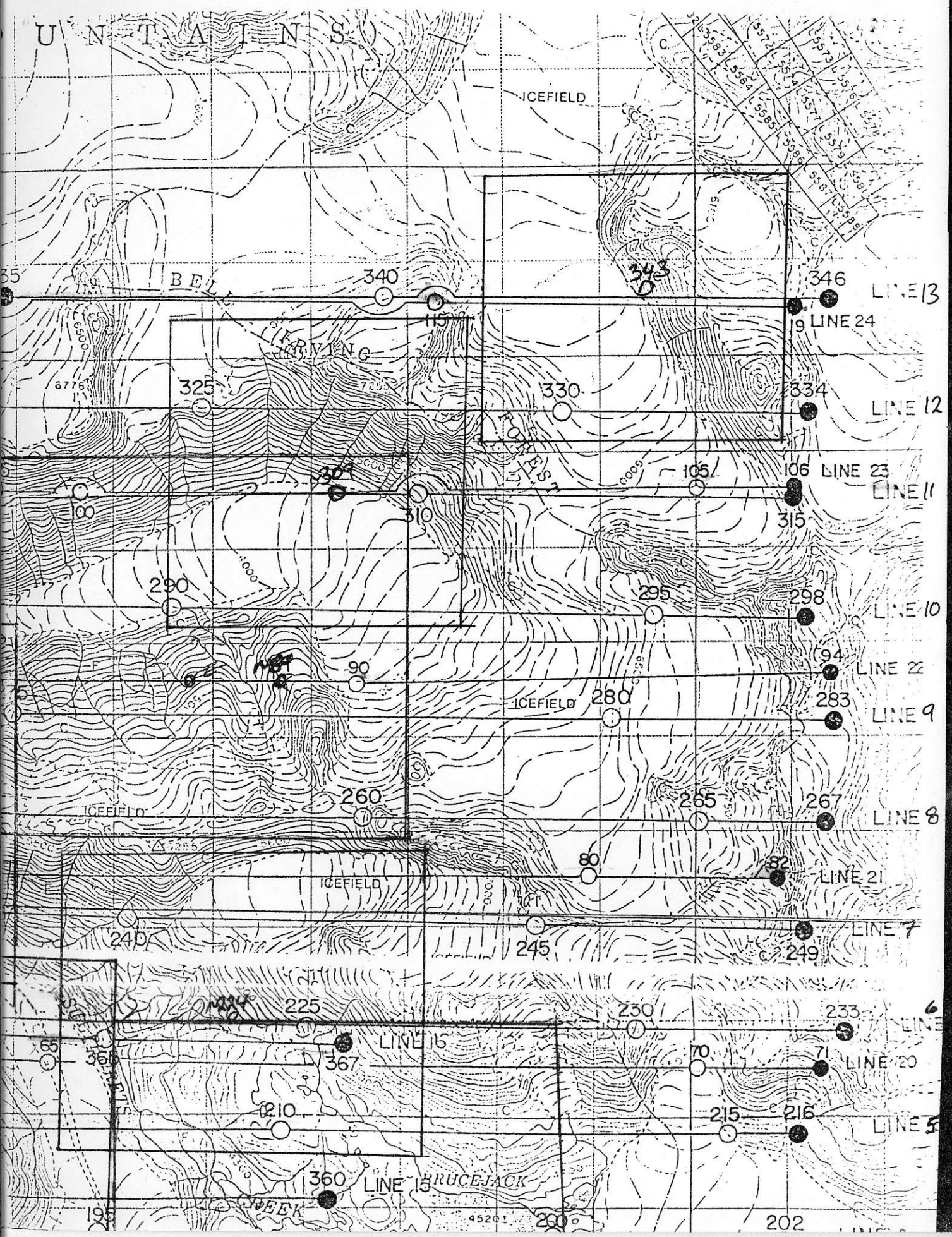
AIR PHOTO INDEX

(B&W)

AREA Sulphurets (Color I.R.)
 CLIENT Eagle Mapping Services Ltd.
 PHOTO SCALE 1:15,000 DATE 28 August 1989
 CAMERA Zeiss RMK LENS Pleogon A2 F.L. 153.689 mm
 JOB NO. G 9074 ROLL NO. G 8908059

8000
 I.R. high line numbers small circles

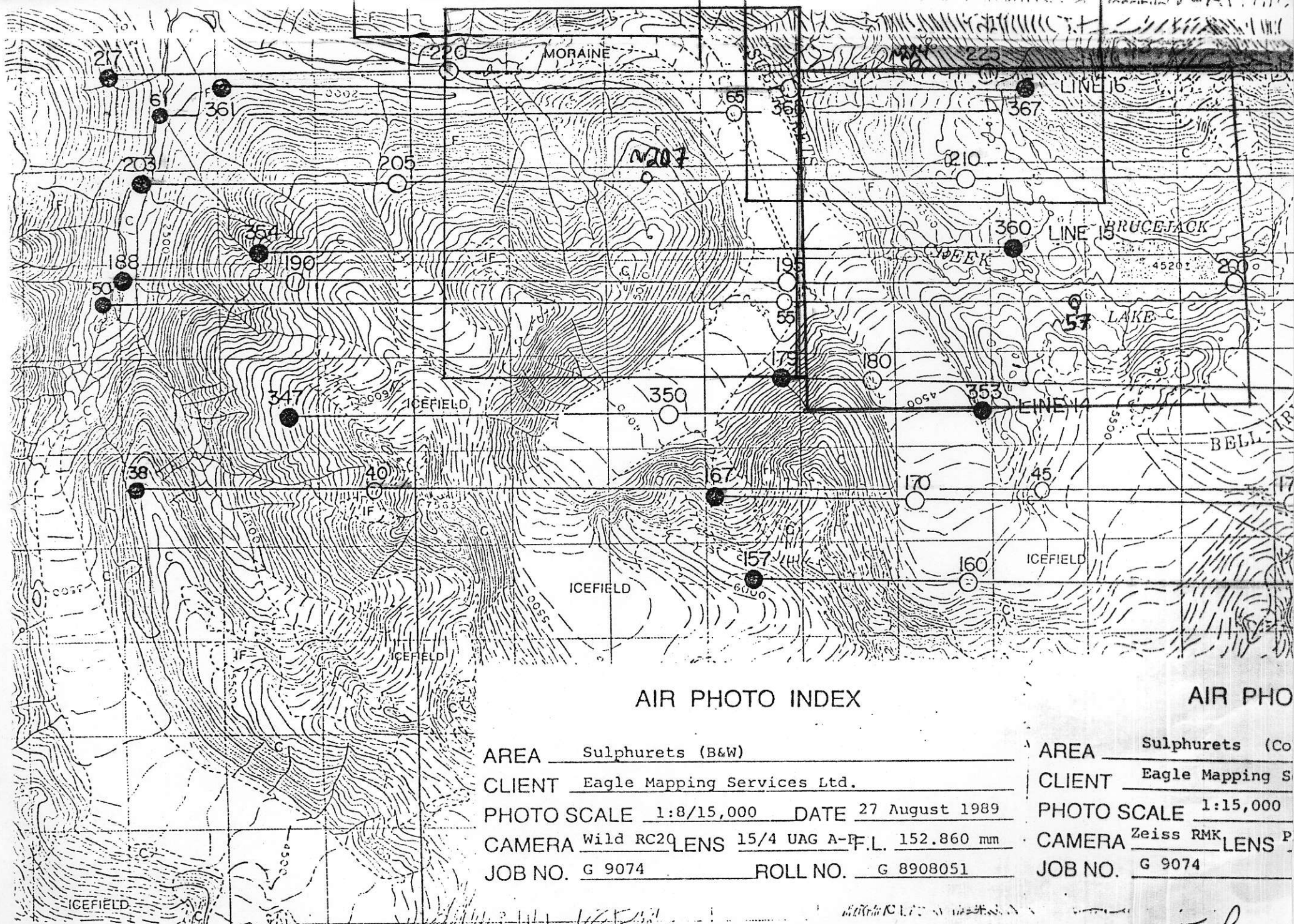
U N T A I N S



FIELD

COAST MOUNTAINS





AIR PHOTO INDEX

AIR PHO

AREA Sulphurets (B&W)
 CLIENT Eagle Mapping Services Ltd.
 PHOTO SCALE 1:8/15,000 DATE 27 August 1989
 CAMERA Wild RC20 LENS 15/4 UAG A-F.L. 152.860 mm
 JOB NO. G 9074 ROLL NO. G 8908051

AREA Sulphurets (Co
 CLIENT Eagle Mapping S
 PHOTO SCALE 1:15,000
 CAMERA Zeiss RMK LENS P
 JOB NO. G 9074

1:8000

I.R.
high