

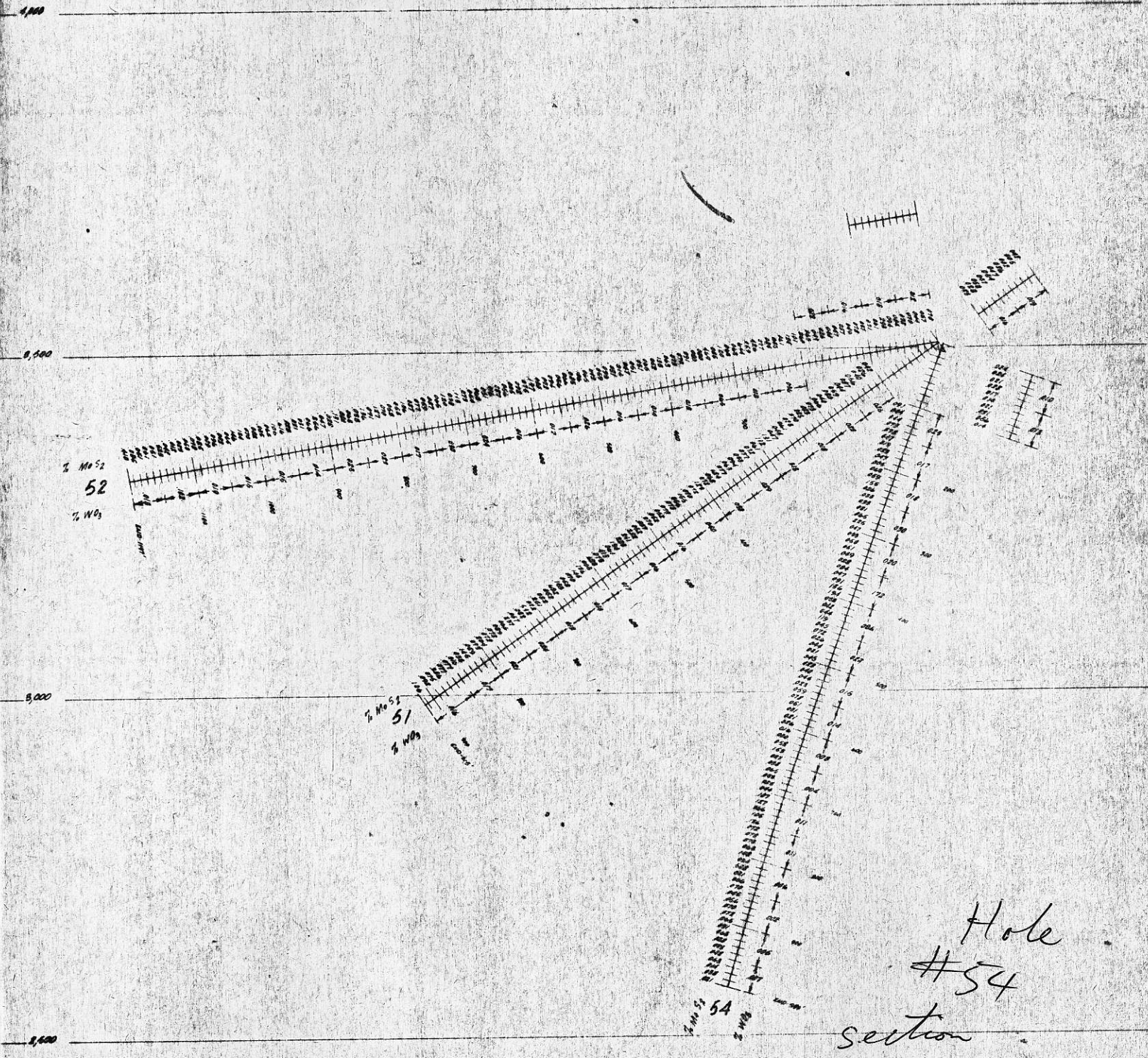
Y.H. 51, 52, 54
 % MoS₂ - % WO₃

802588

YORKE-HARDY

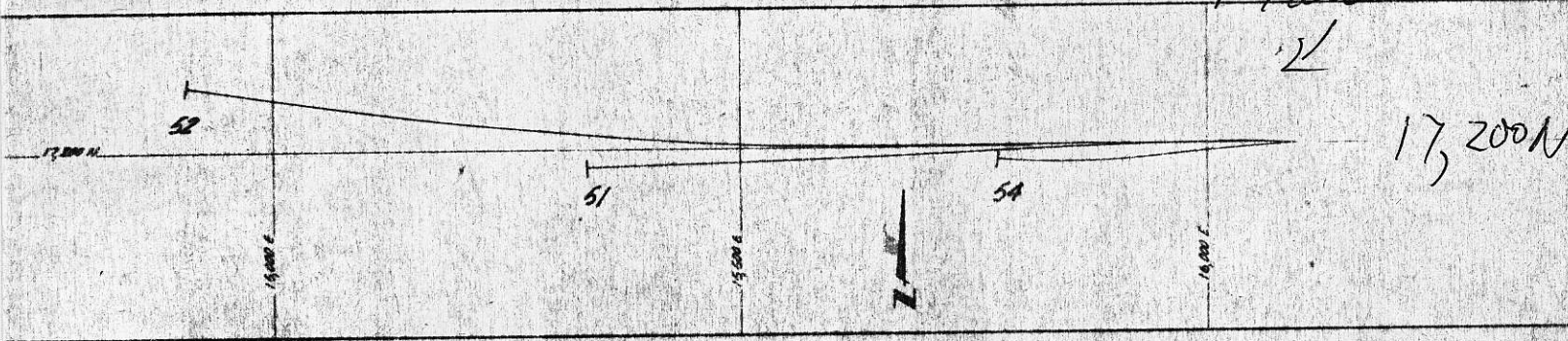
Co-ordinates

HOLE NUMBER	51	52	54
N	17,200.0 N	17,200.0 N	17,200.0 N
E	14,979.24 E	14,979.24 E	14,979.24 E
EL	9,506.24 EL	9,506.24 EL	9,506.24 EL
N	17,200.0 N	17,200.0 N	17,200.0 N
E	14,979.24 E	14,979.24 E	14,979.24 E
EL	9,506.24 EL	9,506.24 EL	9,506.24 EL

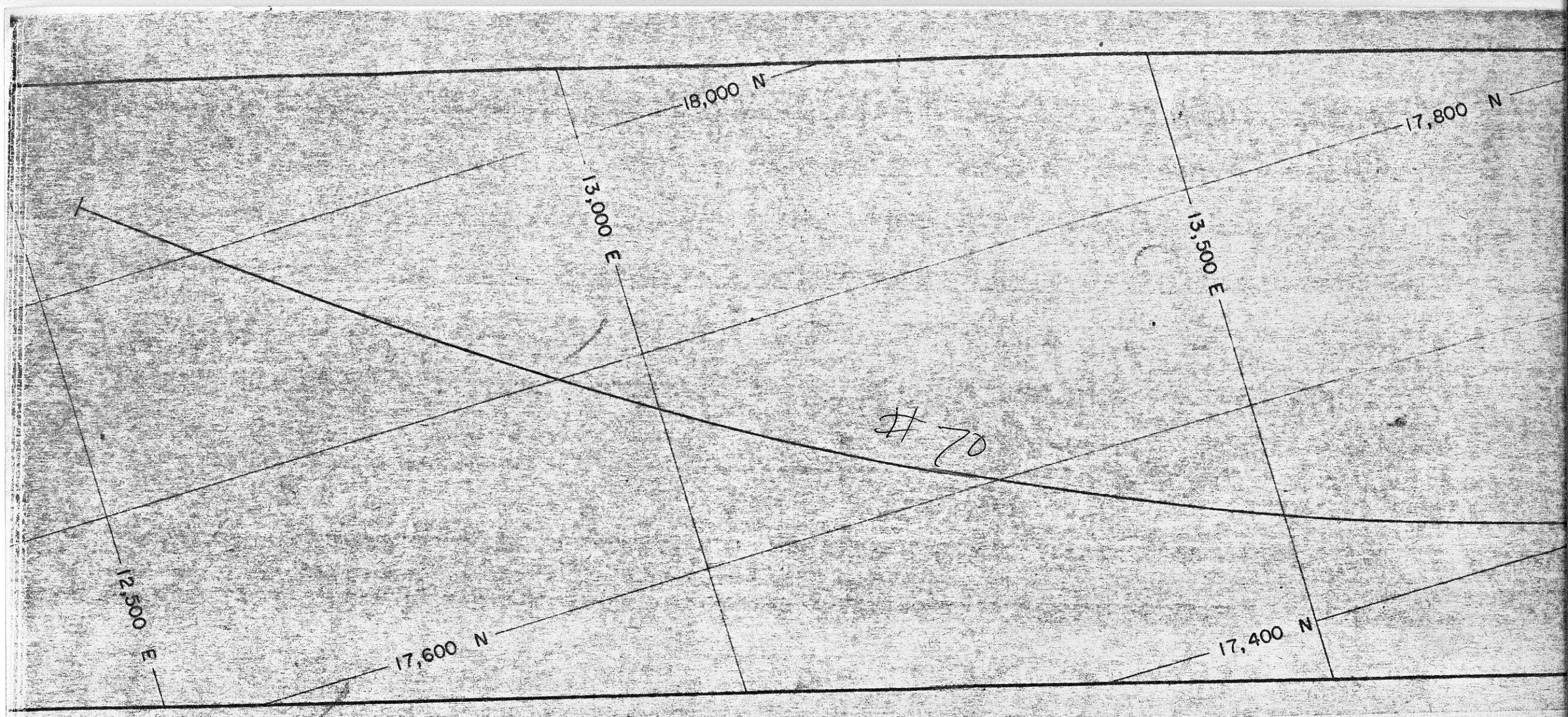


Hole #54 section

Plan

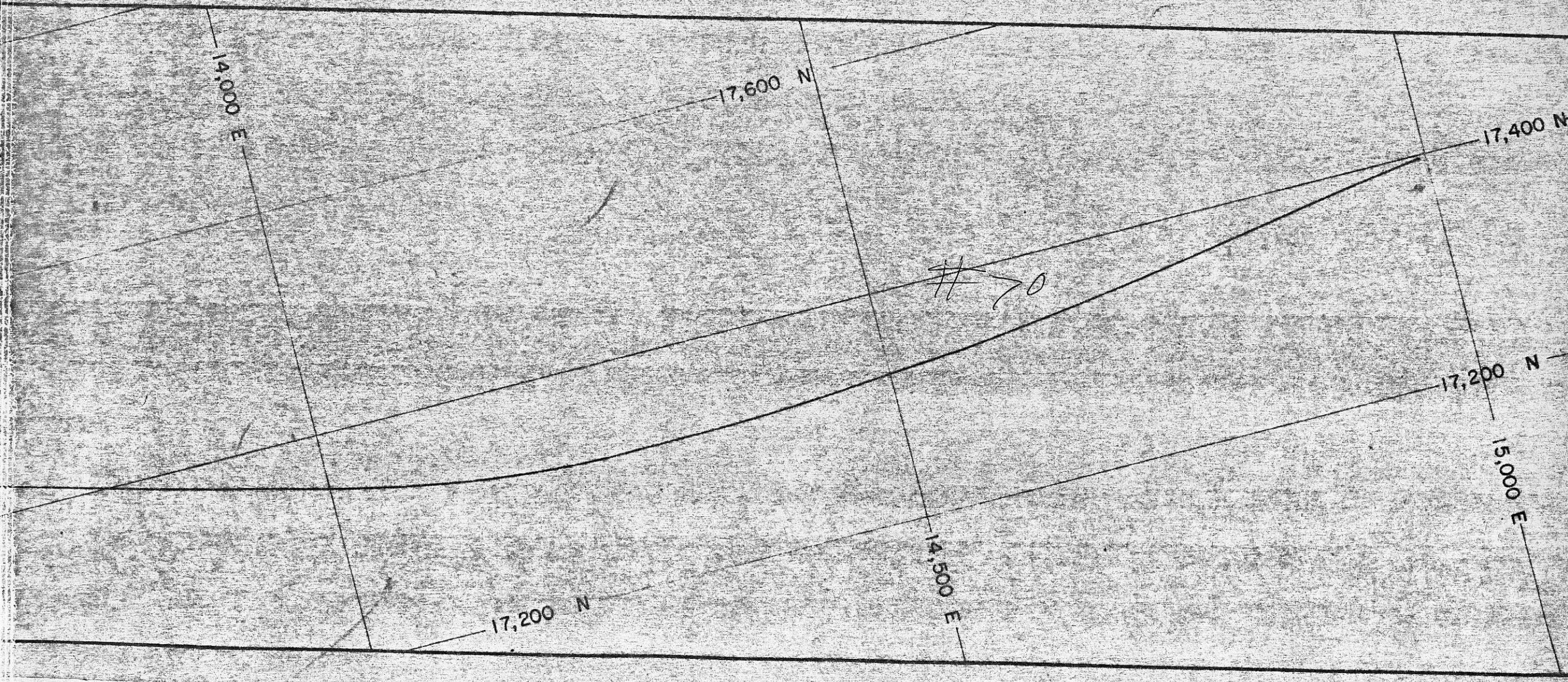


1" = 200'

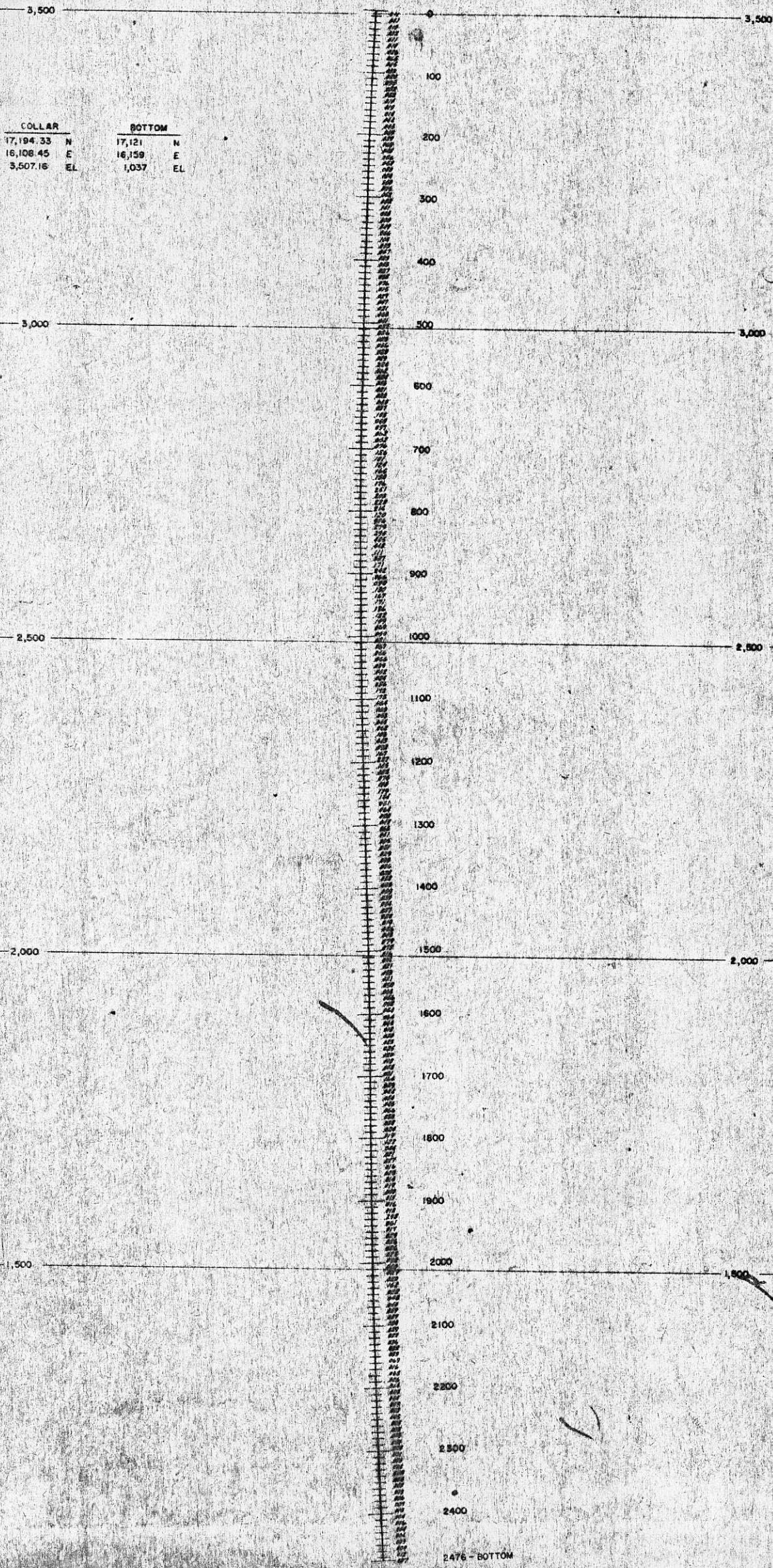


Glacier Gulch 1" = 100'

Glacier Gulch 1" = 100'

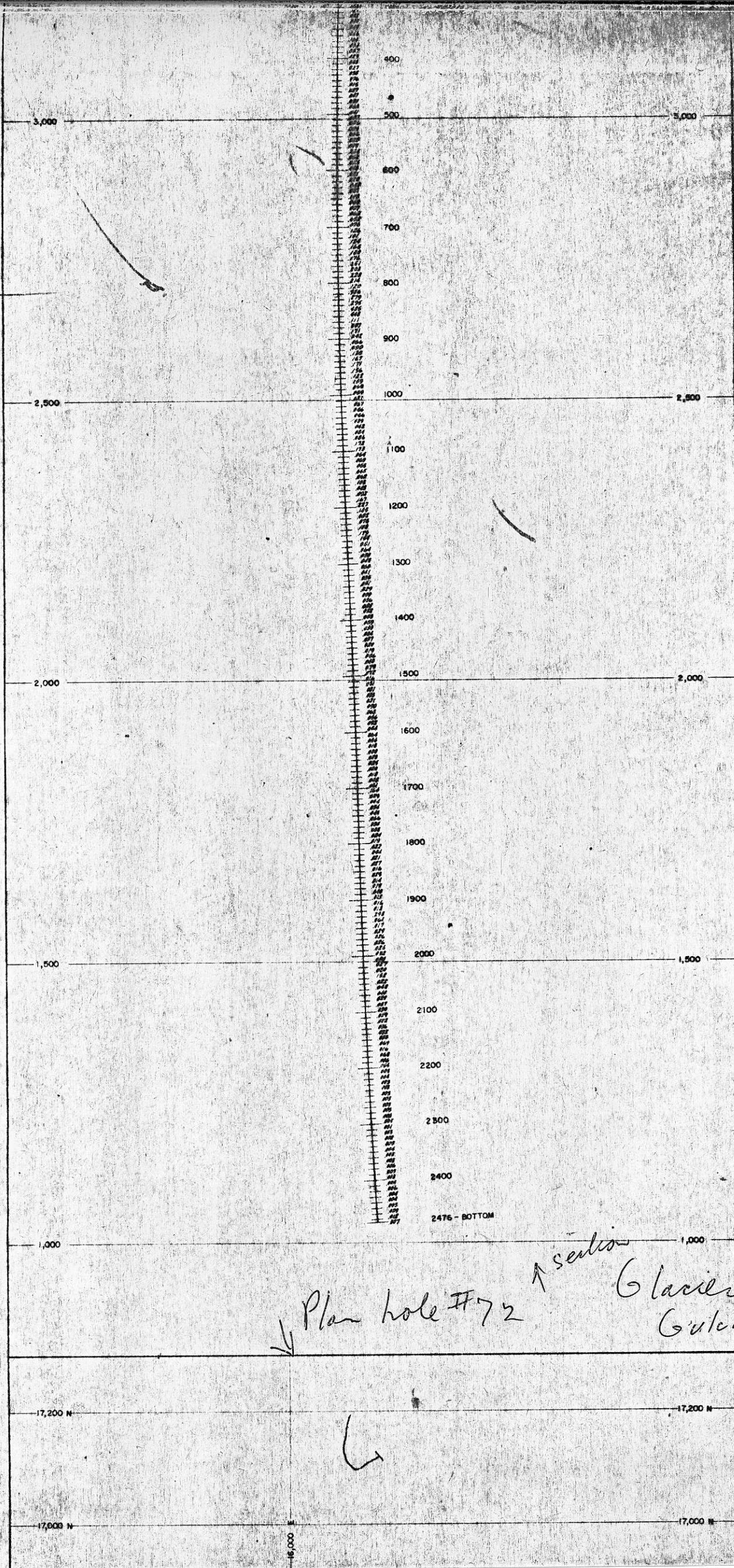


Y.H. 72



COLLAR		BOTTOM	
17,194.33	N	17,121	N
16,108.45	E	16,159	E
3,507.16	EL	1,037	EL

2476 - BOTTOM



Plan hole #72 ↑ seals Glacier Gulch

17,200 N

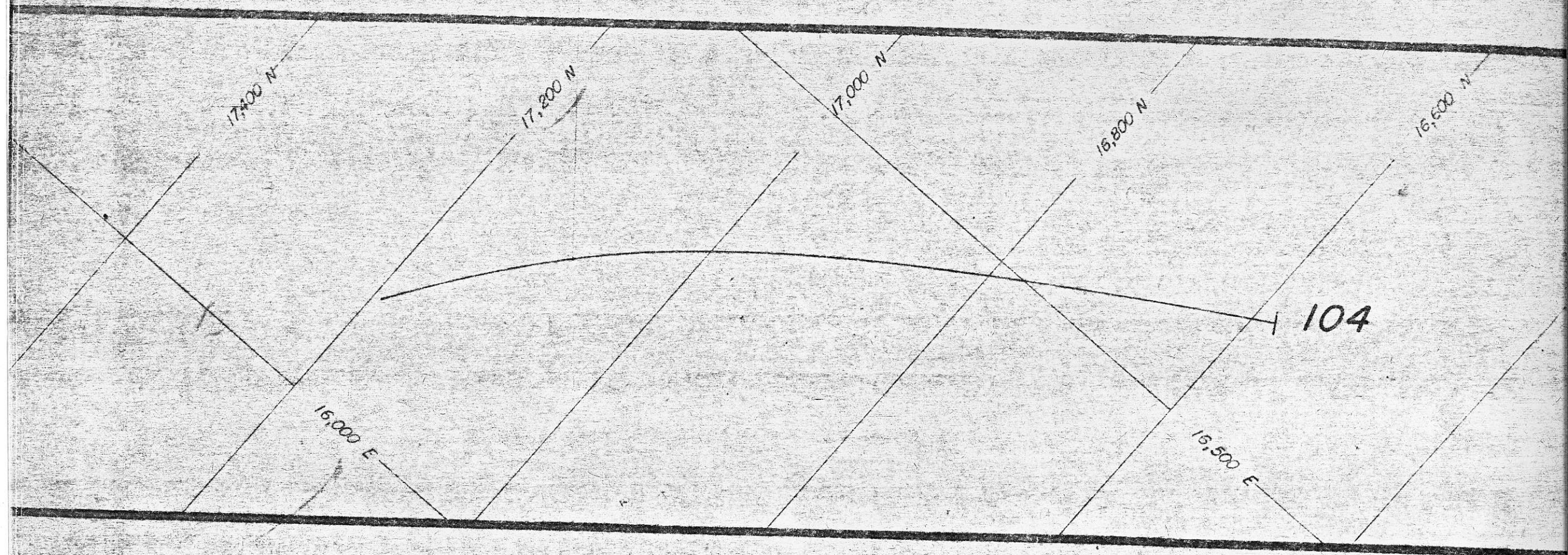
17,200 N

17,000 N

17,000 N

16,000 E

Glacier Gulch
1" = 100'



15,000 E

111

110

15,500 E

16,000 E

17,400 N



3560

3000

2500'

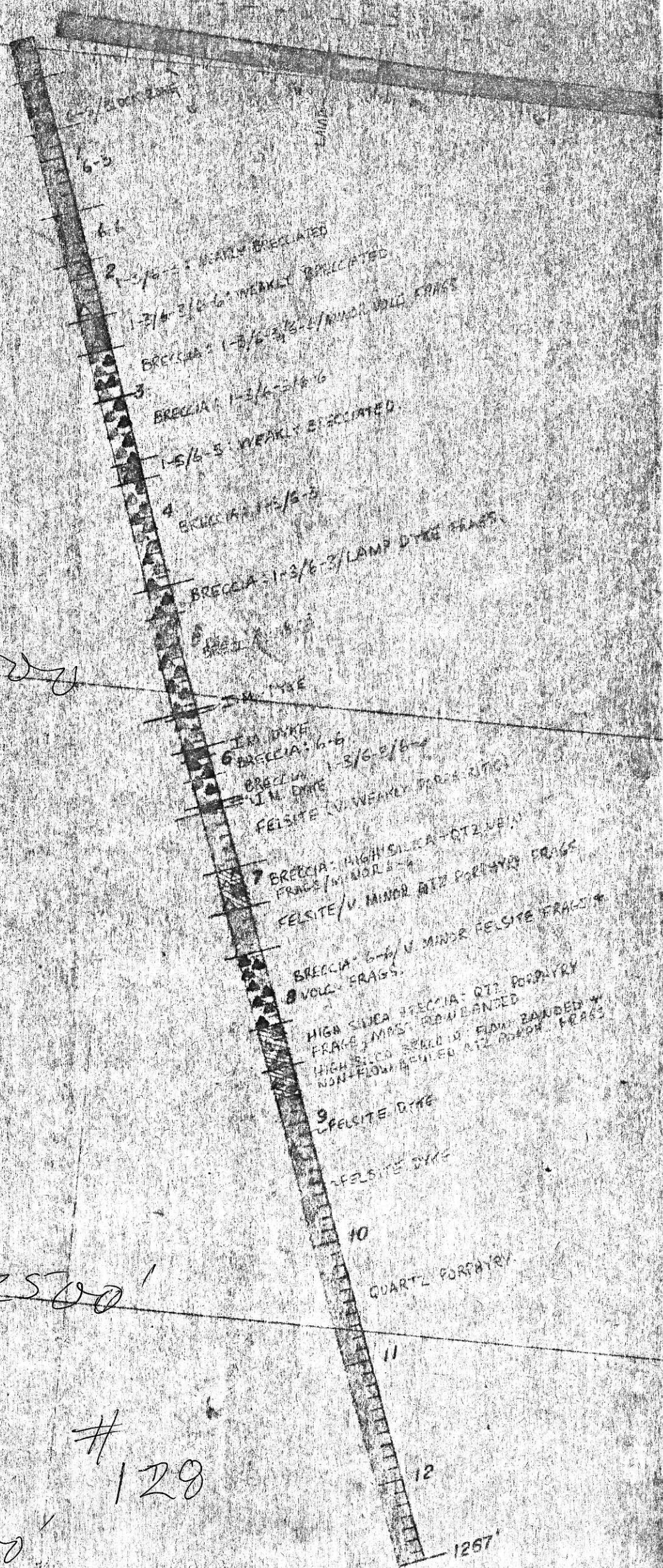
Glacial
Gulch

Scale
1" = 100'

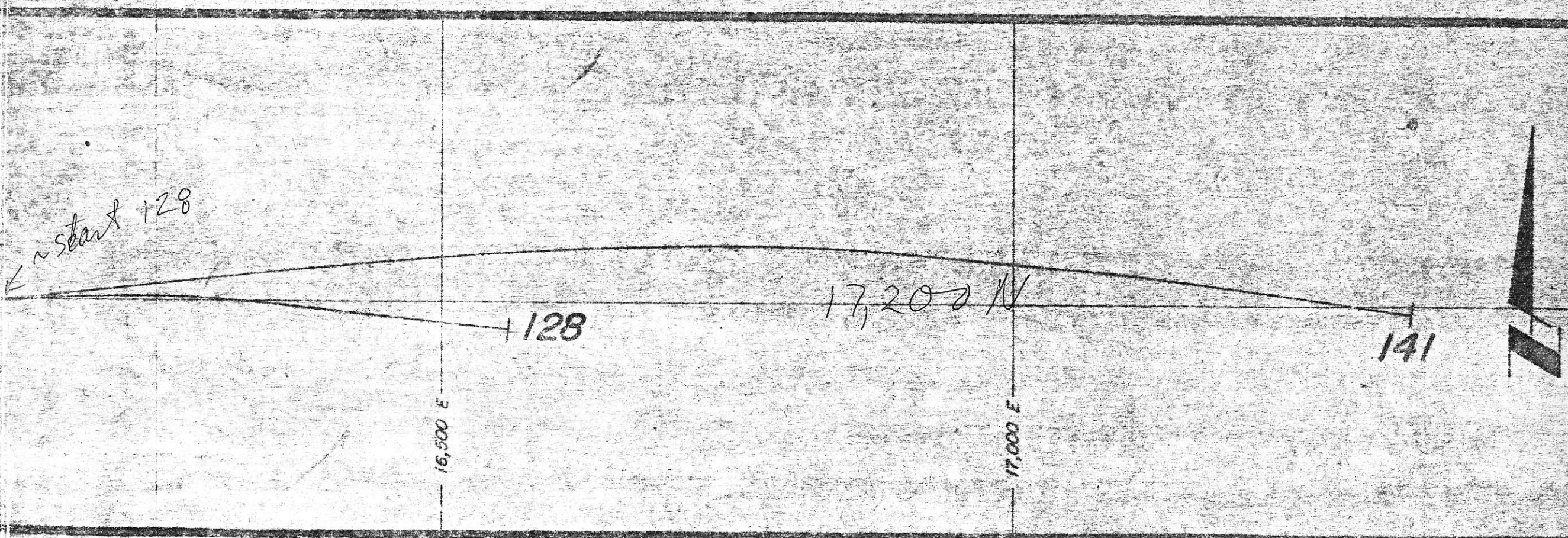
128

1257'

128



← ~ start 128



Glacier Bulch 1" = 100'