

Property name Caribou, Ptarmigan, Car, C.P. Author R.V. Kirkham

Mining division Omineca

Coordinates $54^{\circ} 127^{\circ}$ N.W.

Geographic location Between elevations of 3500 and 6,500 feet about 3 miles south of the junction of Coal Creek and Zymoetz River

Claims 55 recorded claims, Caribou, Ptarmigan, Car & C.P. groups

Access ~~Either~~ 24 miles by helicopter from Smithers or about 3 miles ~~like~~ from the end of the McDonell Lake road.

Owner J. L'Orsa

Operator Dome Babine Mines Ltd., 200-535 Thurlow Street, Vancouver 5, ~~B.C.~~

Metals Copper, silver, gold

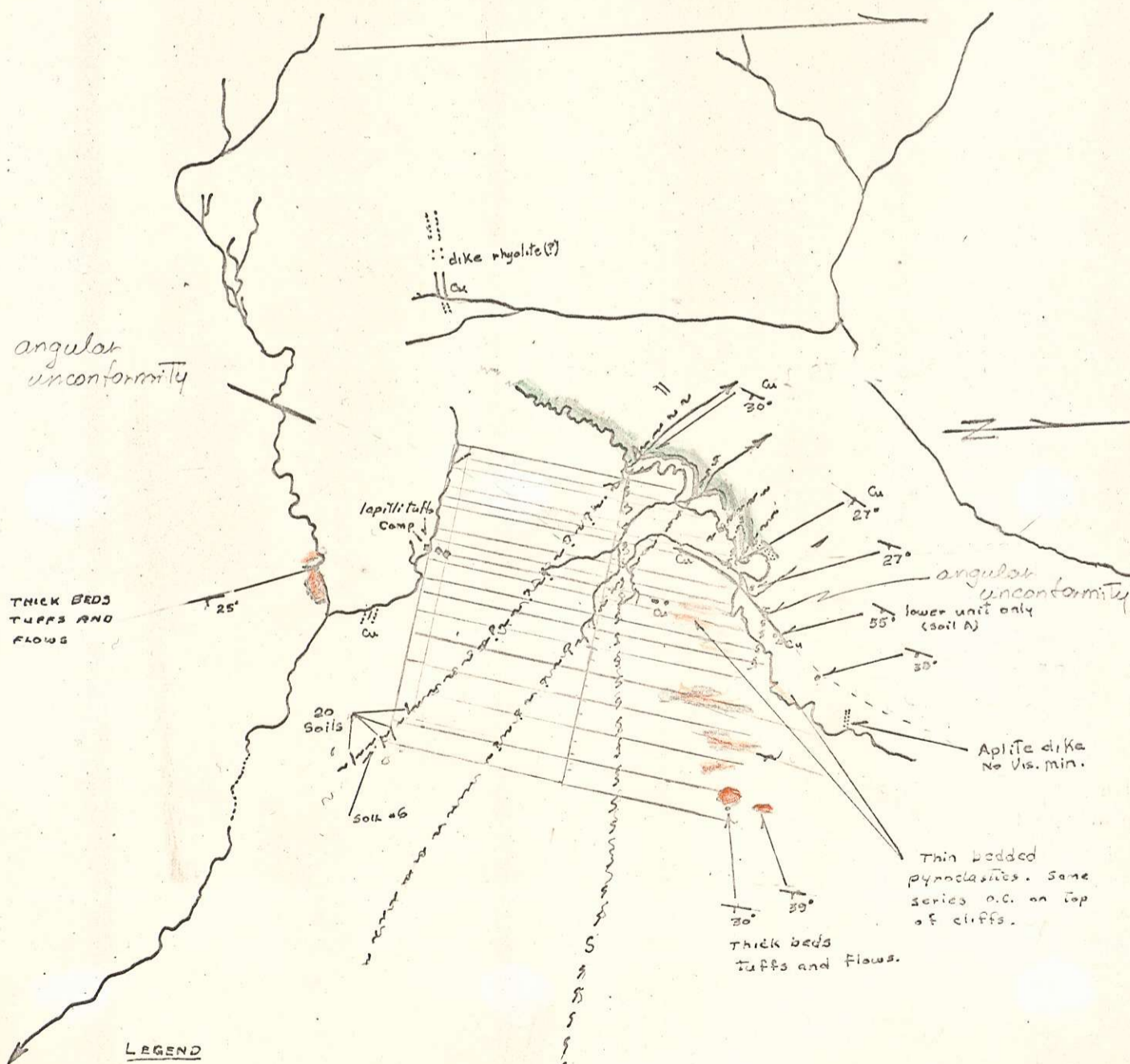
Work done Two men prospected these claims for about two weeks during the summer. Three trenches totalling 45 feet were drilled and blasted.

References

Description

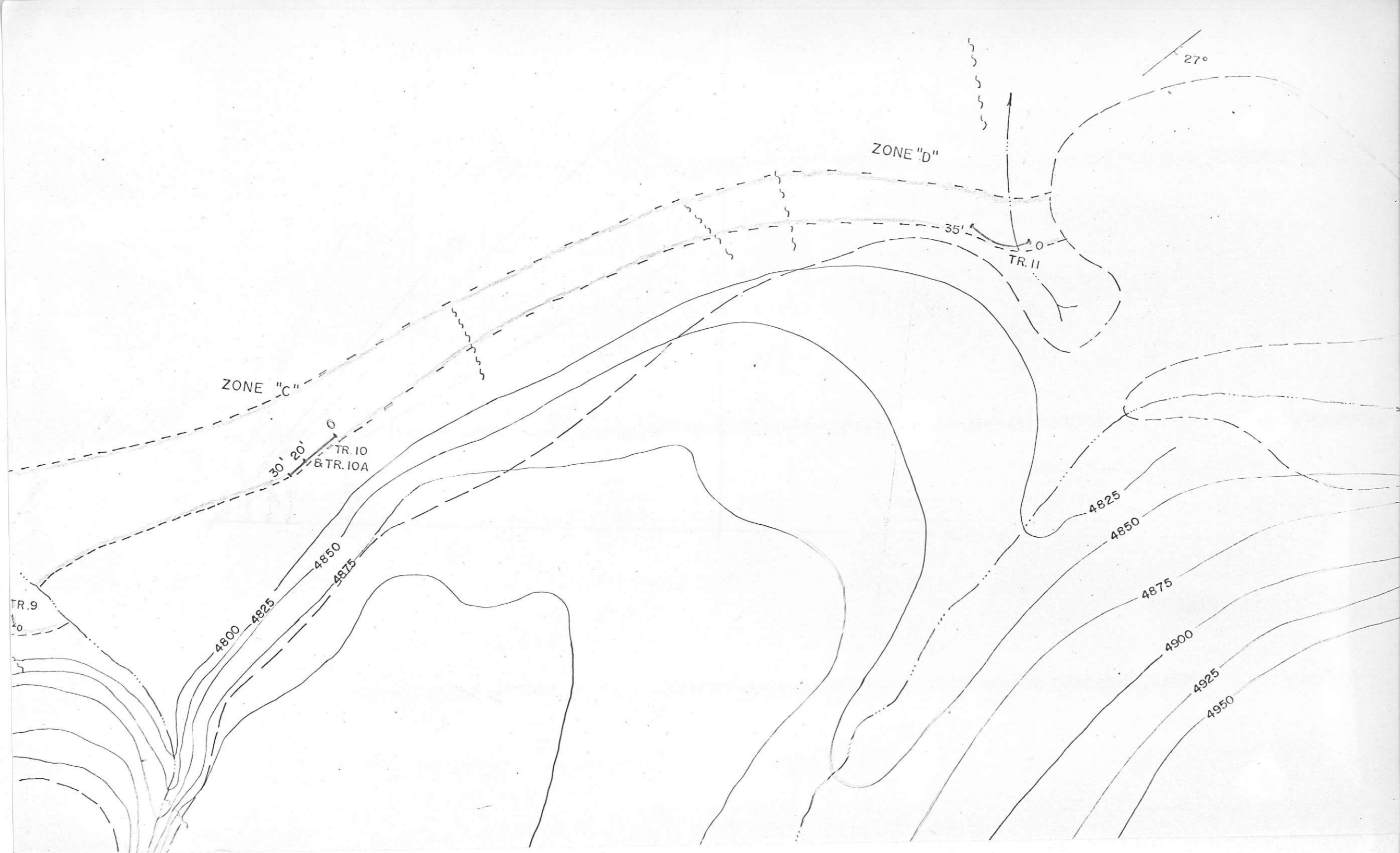
The area is underlain by unmetamorphosed Hazelton volcanic rocks. The writer only very briefly visited one showing. At this locality azurite and malachite are present along fractures in grey and pink felsic volcanic rocks near a contact ~~of~~ with a ~~flow~~ ^{massive} flow. The mineralization has probably been emplaced along a fault. A chip sample taken across a 15 foot trench assayed: Gold, nil; silver, 0.5 ounces per ton; copper, 0.14 per cent.

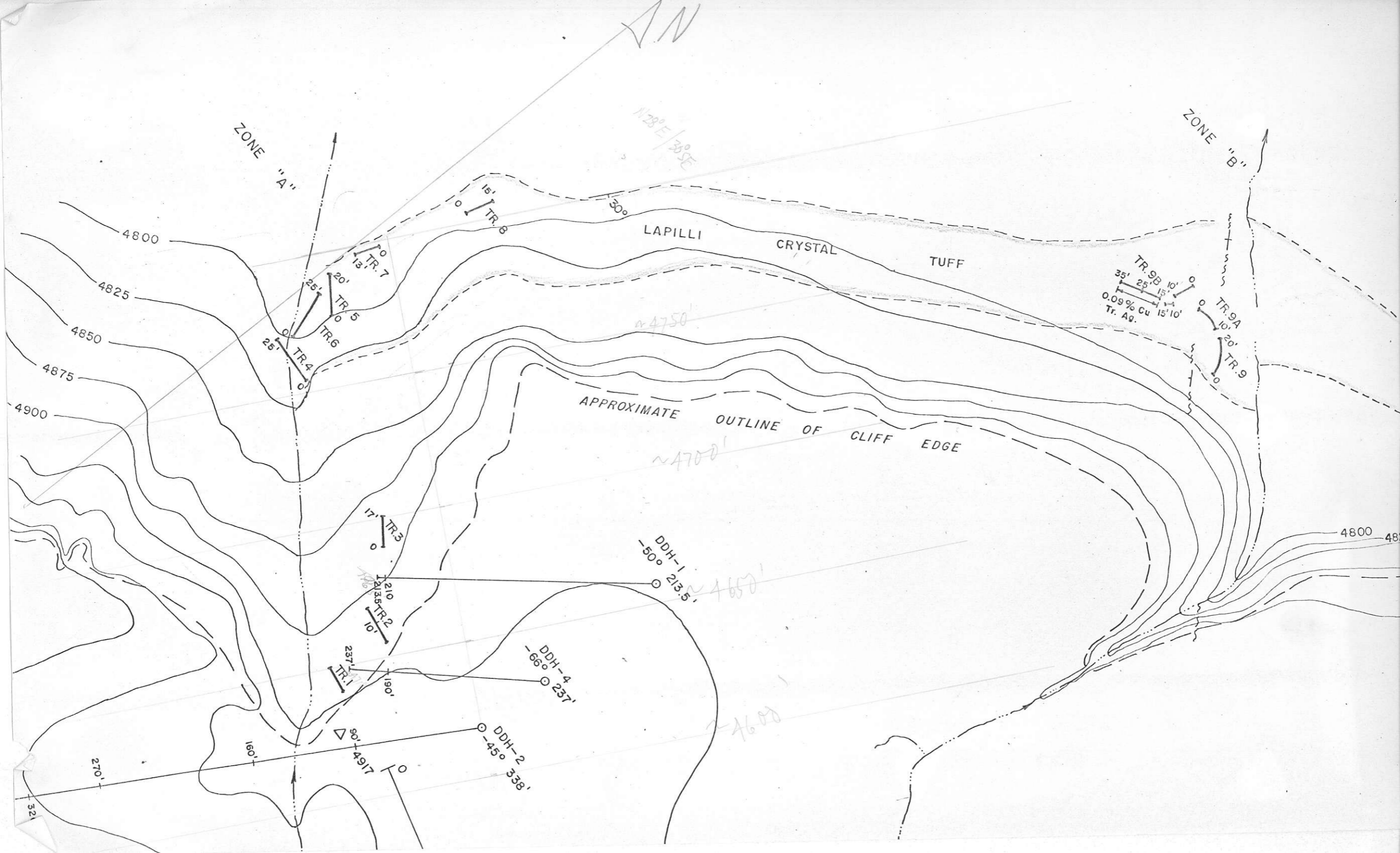
There are several other minor copper-silver showings reported on this property but very little is known about them. Farther east chalcopryite and bornite ^{have been} reported to occur in quartz veins and breccias.

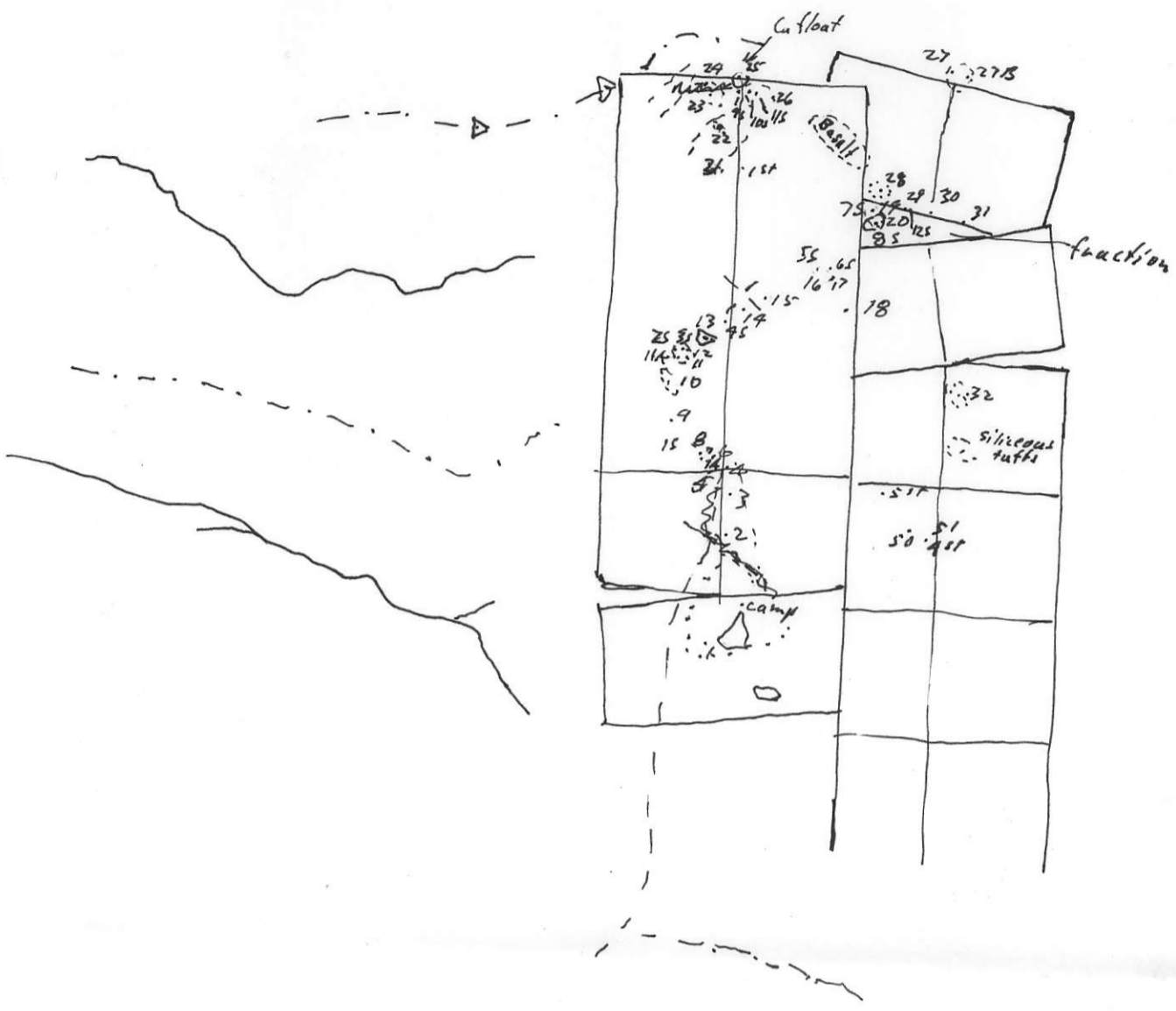


- LEGEND**
- lapilli xtl Tuff - mineralized unit
 - volcanic flow - pink feldspars? in amygdules
 - undifferentiated thick beds at Tuffs and flows.
 - undifferentiated pyroclastics - gen. tuffs and ash.
 - faults
 - 1 soils - 100' lines across fault.
 - angular diaconformity?

GENERAL GEOLOGY
 CARIBOU MTN. PROJECT
 Scale 1" = 1160'
 Aug/68 M.J.B.



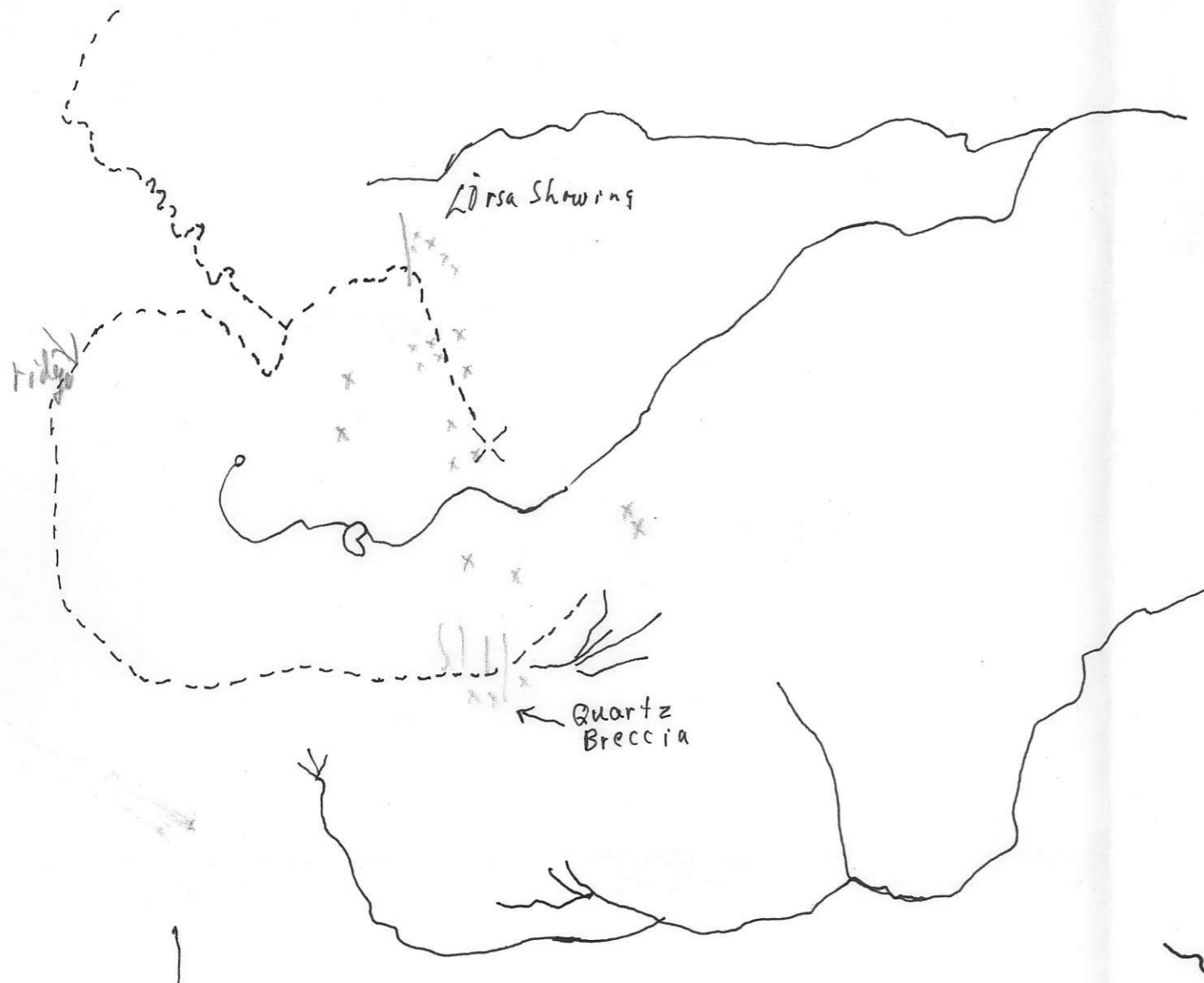




- Rock Samples (MMX)
1. tuffs bleached
 2. " - water laid
 3. " bleached
 4. " siliceous
 5. purple andesite - calcite
 6. " " - altered
 7. andesite br. ?
 - 7A purple and.
 - 8 purple and.
 - 9 and. - qtz. eyes - altered
 - 10 vesicular basalt
 - 11 and. (altered)
 - 11A diabase - hem. mag.
 - 12 ? altered volcanic - feldspar
 - 13 tuffs - Fe py
 - 14 and. porph.
 - 15 " " (bleached)
 - 16 diabase - Fe py, Cu
 - 17 " - Fe py
 - 18 rhy - qtz. eyes
 - 19 rhy? - siliceous volc.
 - 20 purple tuffs
 - 21 and. porph. (altered)
 - 22
 - 23 vesicular basalt - calcite
 - 24 chert - Fe py
 - 25 basalt - calcite & epidote
 - 26 chert
 - 27 basalt - fragments of chert
 - ~~27~~
 - 27B " - hem. mag. calcite
 - 28 feldspar? dyke
 - 29 and. porph.
 - 30 and. - cherty fracture
 - 31 tuffs - cherty fracture
 - 32 flow banded rhyolite
 - 50 tuffs (altered)
 - 51 gneiss? - siliceous

overlay for B.C. (5427 23) 13
1007:22

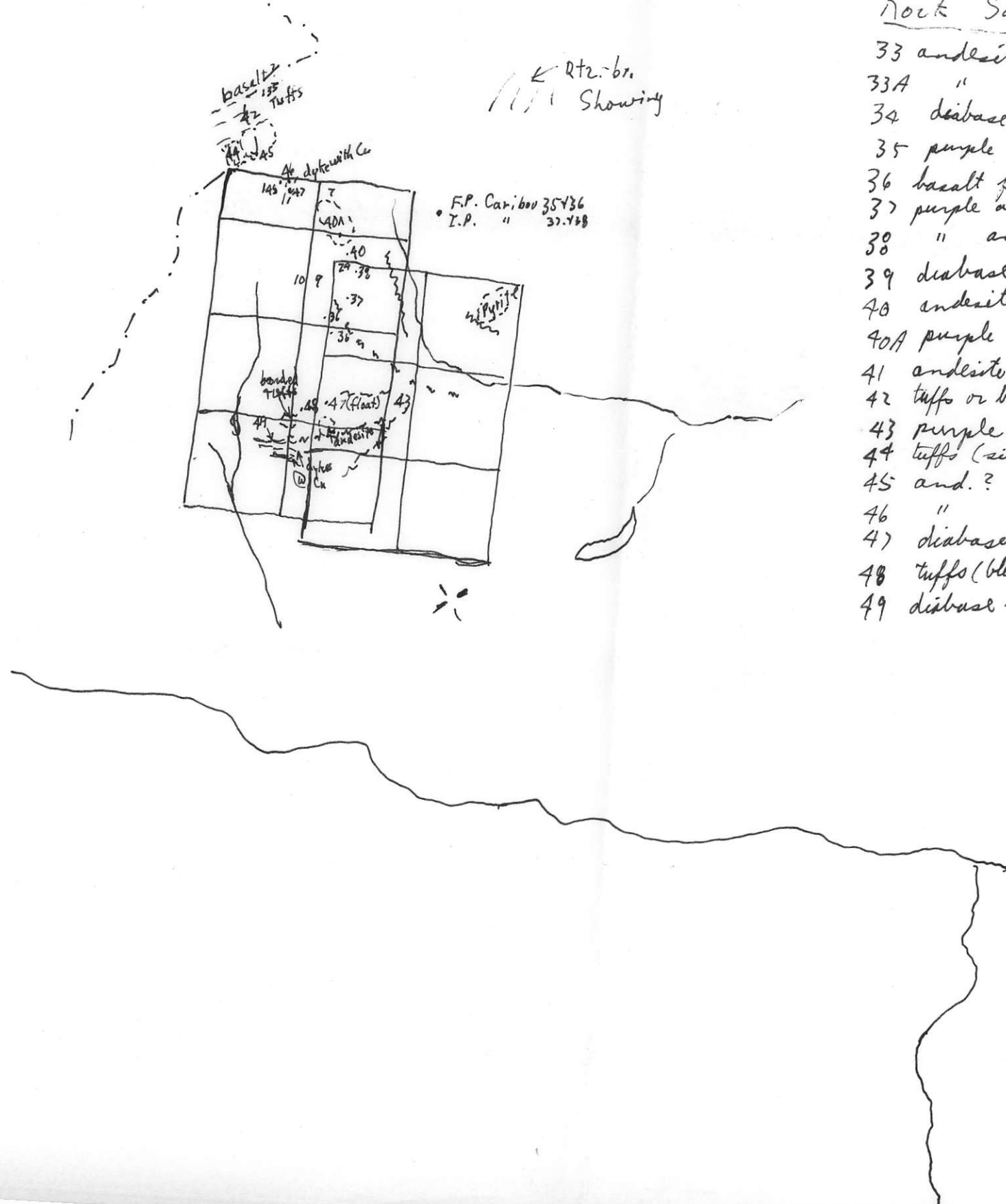
B.C. 1007:73



1" = 2200' @ 5000'

Sech Cr

1007:71



Rock Samples (MMX)

- 33 andesite (bleached)
- 33A " - hematite
- 34 diabase - Cu
- 35 purple and.
- 36 basalt feldspar porph.
- 37 purple and. (altered)
- 38 " and.
- 39 diabase
- 40 andesite?
- 40A purple andesite
- 41 andesite (bleached)
- 42 tuffs or breccia - Fe py
- 43 purple and. (cherty)
- 44 tuffs (siliceous)
- 45 and. ? (as 40)
- 46 "
- 47 diabase - Cu, Pb
- 48 tuffs (bleached) - limonite
- 49 diabase - Cu