

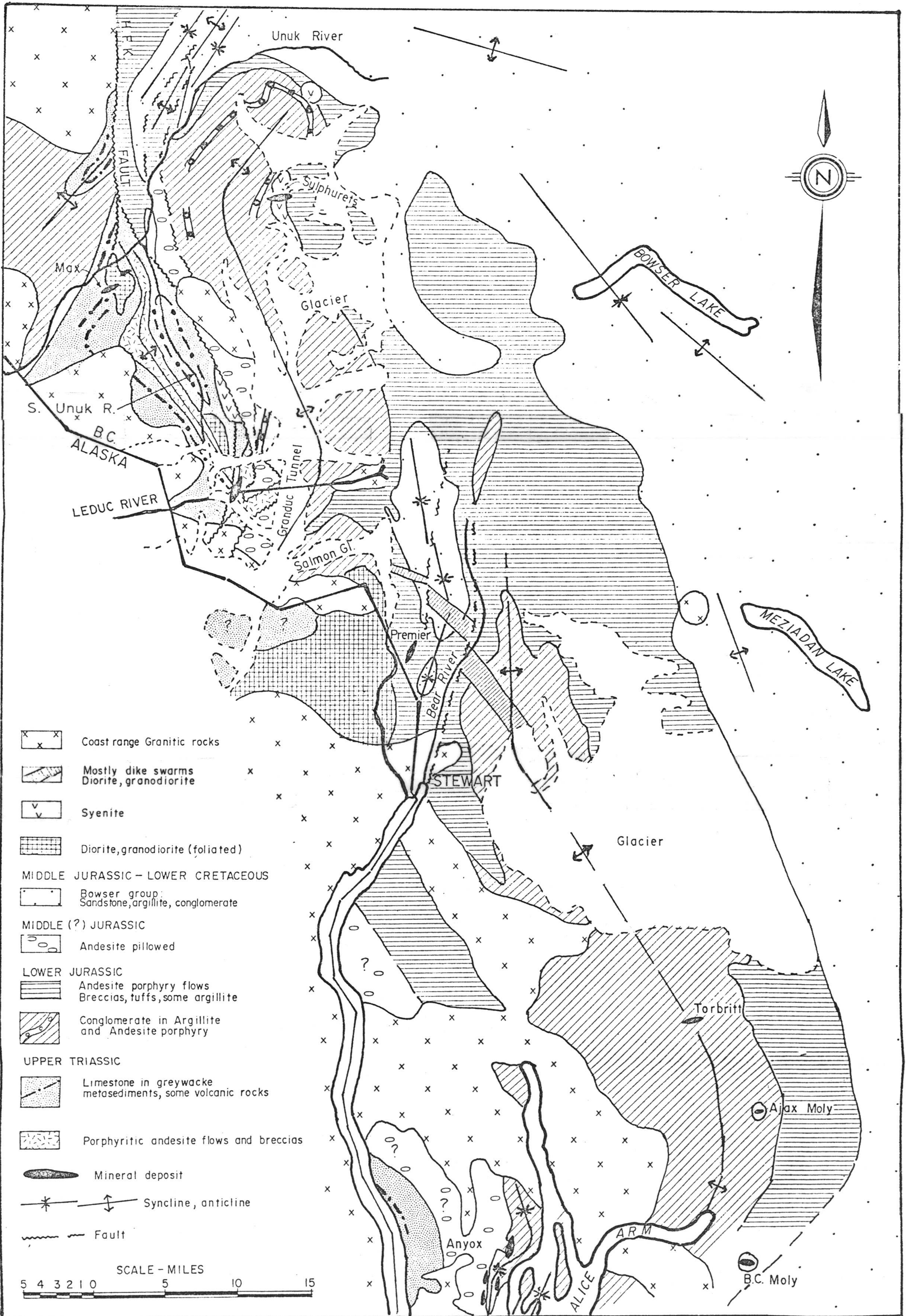
1980
unpublished

LIST OF FIGURES

Figure
No.

- 1 Geology of the Jerome District, Yavapai County, Arizona.
- 2 Geology of the Alice Arm-Unuk River Mineral Belt, Northern British Columbia. South and East of the Granduc Tunnel, modified from mapping by the Canada Geological Survey and B.C. Department of Mines and Petroleum Resources.
- 3 Geology of the Granduc Mine Area, British Columbia.
- 4 Geology of the Opemisca-Chibougamau Region, Abitibi-East Electoral District, Quebec.
- 5 Quebec and Ontario Mines (past and present producers) Northwest of the Grenville Front, between the Icon and Sudbury mines.
- 6 Plan and Section Irene No. 3 Orebody, Resurrection Mine Workings (1954), Leadville, Colorado.

R. V. KIRKHAM
R. V. KIRKHAM
R. V. KIRKHAM

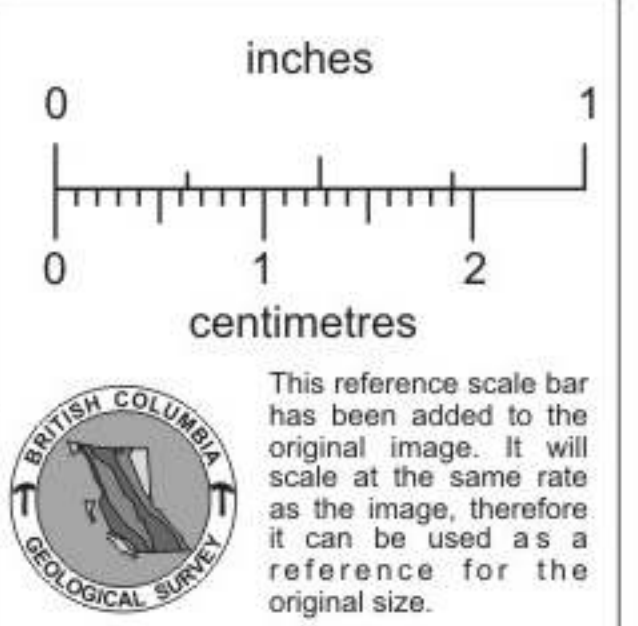


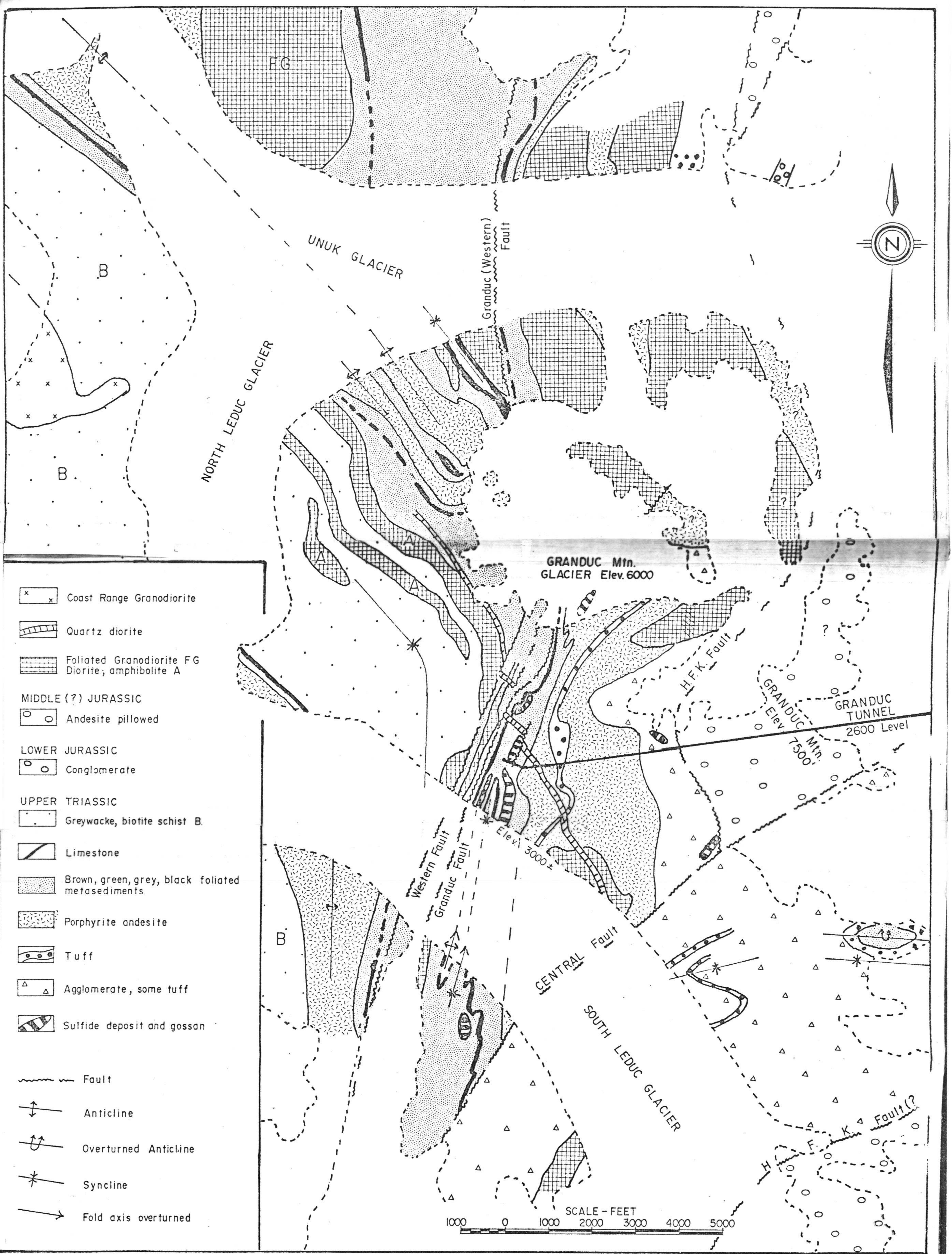
CONFIDENTIAL
 NOT TO BE QUOTED FROM

Figure 2

*from Norman, 1980
 unpublished paper*

802462





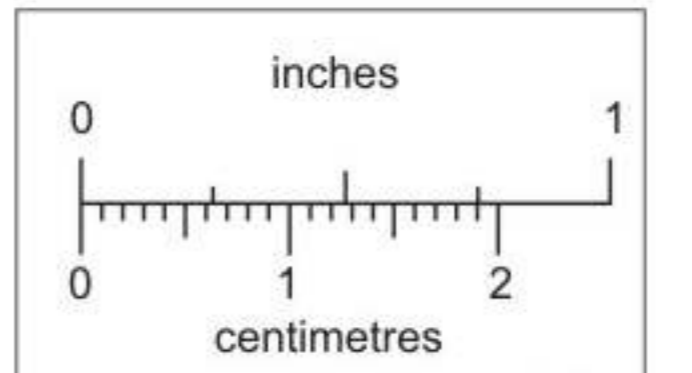
- Coast Range Granodiorite
- Quartz diorite
- Foliated Granodiorite FG
Diorite; amphibolite A
- MIDDLE (?) JURASSIC
- Andesite pillowed
- LOWER JURASSIC
- Conglomerate
- UPPER TRIASSIC
- Greywacke, biotite schist B.
- Limestone
- Brown, green, grey, black foliated metasediments
- Porphyrite andesite
- Tuff
- Agglomerate, some tuff
- Sulfide deposit and gossan
- Fault
- Anticline
- Overturned Anticline
- Syncline
- Fold axis overturned

Figure 3

CONFIDENTIAL
NOT TO BE QUOTED FROM

R. V. KIRKHAM
R. V. KIRKHAM

from Norman, 1980
Unpublished paper



This reference scale bar has been added to the original image. It will scale at the same rate as the image, therefore it can be used as a reference for the original size.