



802203

Hello Rod.

Here is a package for you over, the large book is the emerald dsle data and the small book is our report from Denise Birkeland.

There has been an unbelievable staking program by emerald fields (emerald dsle) all the way to the wallbron valley.

A group of chinese geologists from China Minmetals Corporation have been out looking around for a while

See if you can scare up some interest. We are looking to take on a major partner.

Thanks 

Specimen descriptions, Port Renfrew area, B. C.

for D. Giovenazzo

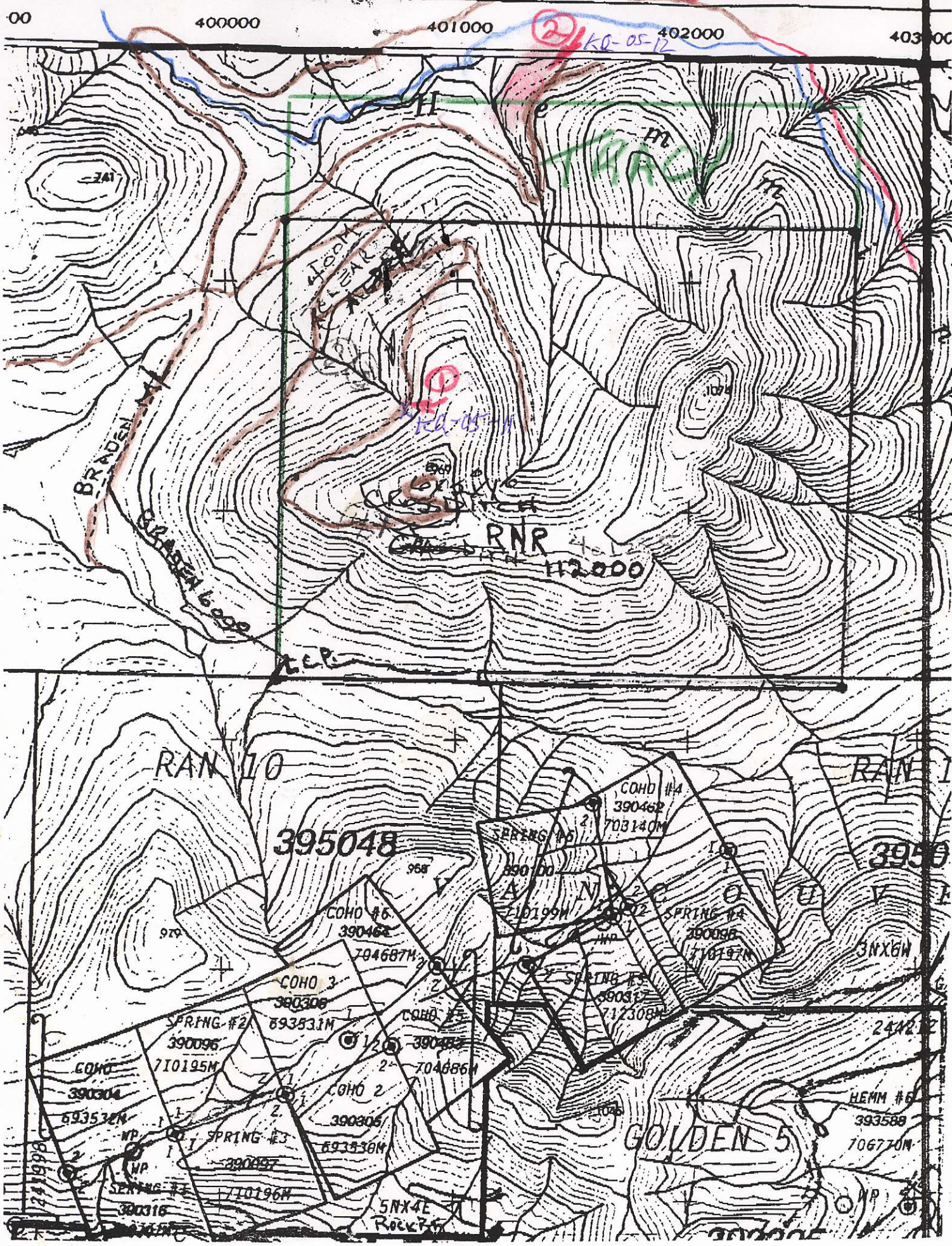
- KQ-05-02-basal till boulder immediately on top of copper skarn showing in roadcut, Granite Main Line; dark green, intensely hornblende-altered, fine-grained gabbro ? with very minor clusters of disseminated pyrite; minor fine-grained, relic, pale green-grey plagioclase crystals; possibly similar to metamorphic rocks described by Rusmore, 1982, p. 106
- KQ-05-06A-basal till boulder, Golden 7 claim, Fairly Main Line; rusty, dark green, very hard, spheroidal-weathered magnetite-diopside skarn ?
- KQ-05-06C-same locality and similar to 06A
- KQ-05-06D-same locality as 06A&C; very dark green, non-magnetic, fine-grained hornblende?
- KQ-05-07-outcrop Fairy Main Line uphill about 0.5 km north of 06; dark green-grey, chlorite?-altered, slightly magnetic, fine-grained mafic quartz diorite to gabbro; could be the border phase of large monzogranite pluton to south or a separate intrusion?
- KQ-05-08C-boulder in ancient valley-fill debris flow; somewhat magnetic, dark green, medium-grained diorite ? with minor disseminated pyrrhotite
- KQ-05-11-roadcut RNR claim; very dark green, chloritic, slickensided fault rock with sheared and broken quartz veins and trace pyrite
- KQ-05-13-about 50 m-long in roadcut Hemmingsen Main Line; very dark green chlorite-serpentine ? rock with minor pyrite, some carbonate ?, and relic crystals- original rock type unknown

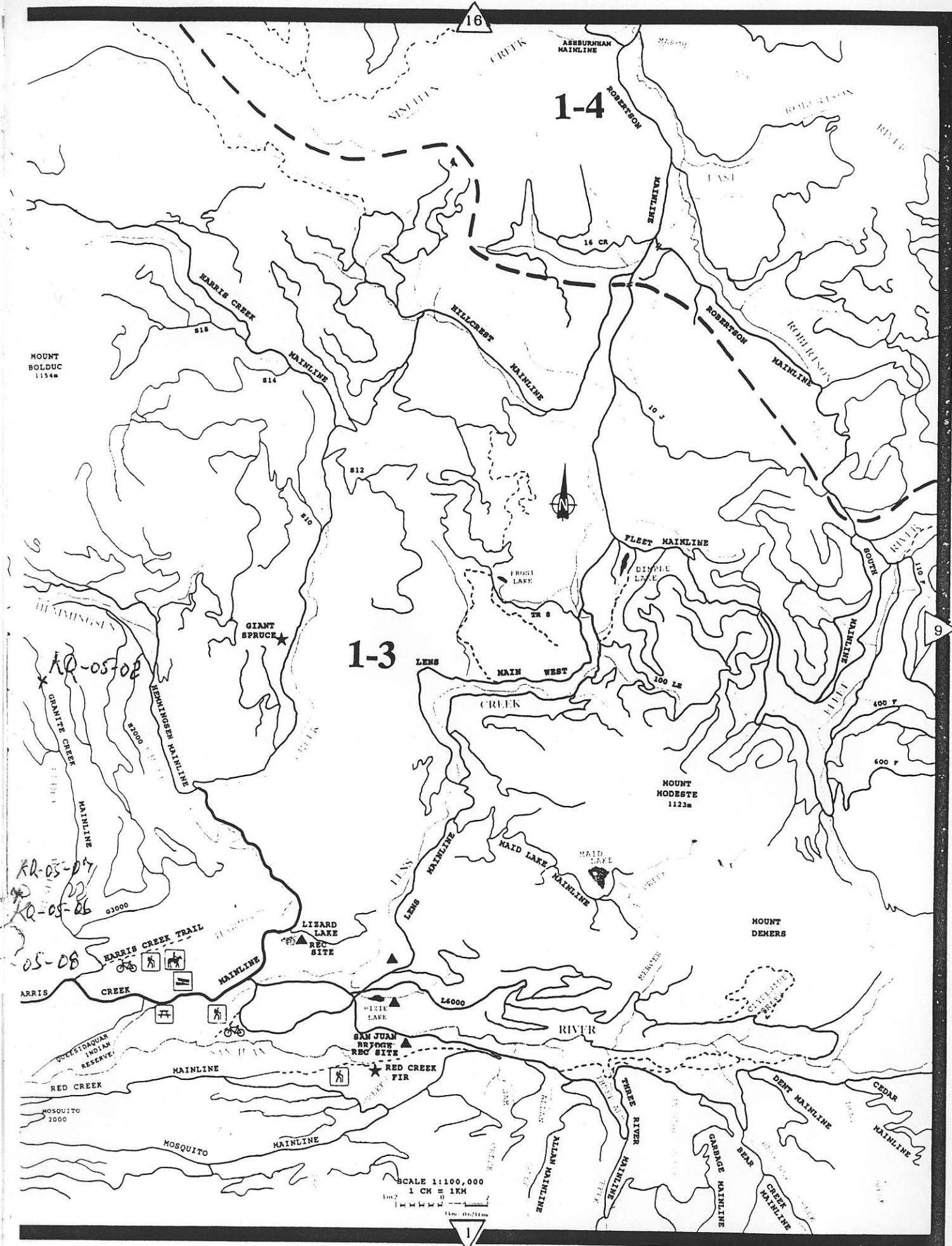
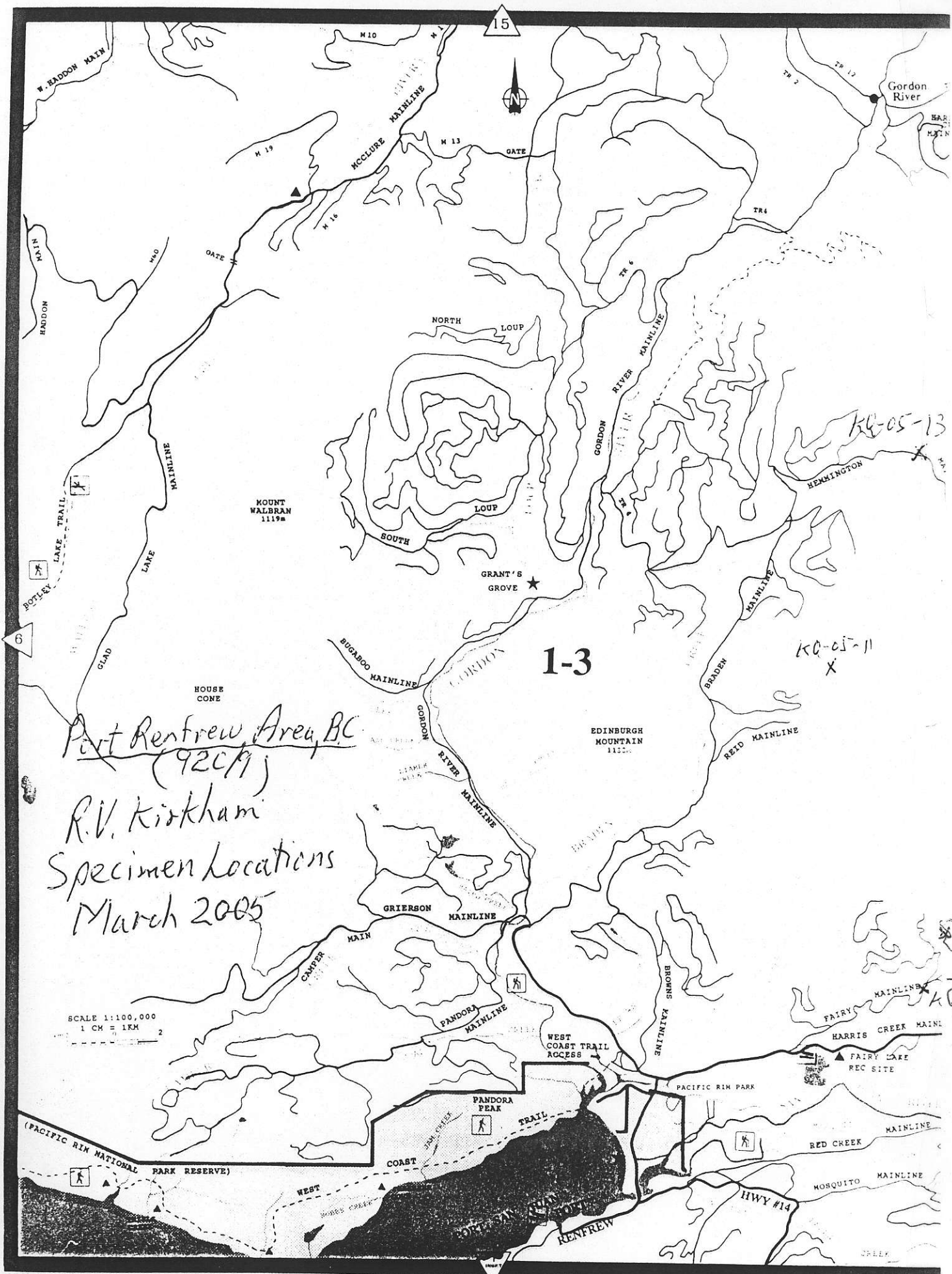
-see maps for approximate specimen locations

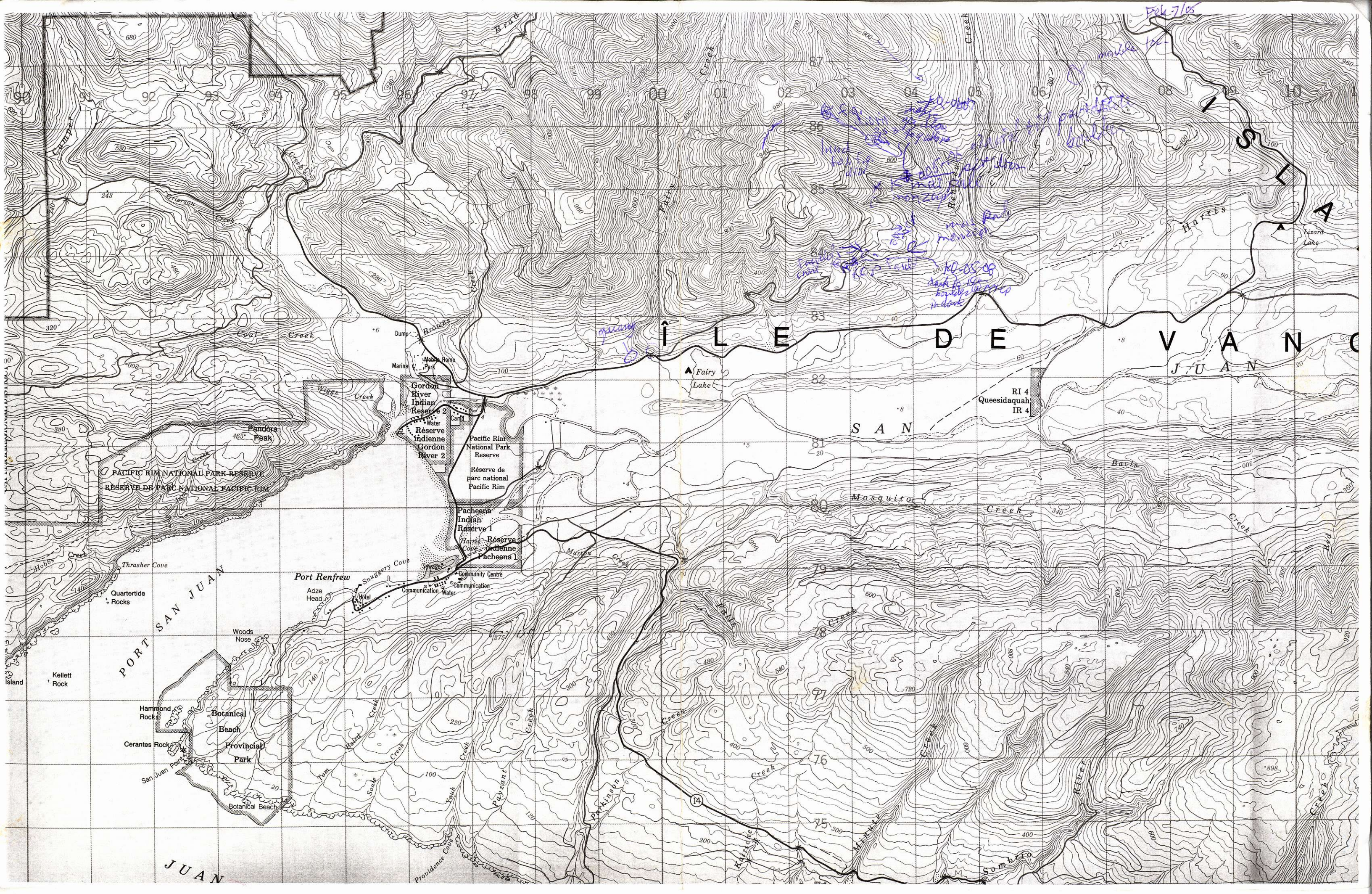
-Danielle, if you have any petrographic work done on these rocks we would appreciate a copy of the results

3 KQ-05-15

2 KQ-05-12







Feb 7/05

made 100

Fairy Lake
Mosquito Creek
Pachena Indian Reserve 1
Gordon River Indian Reserve 2
Pacifica National Park Reserve
Port Renfrew
Botanical Beach Provincial Park
Pachena Indian Reserve 1

RI 4
Queesidaquah
IR 4

PORT SAN JUAN

JUAN

ÎLE DE LA GRANDE-VUE

SAN

JUAN

PACIFIC RIM NATIONAL PARK RESERVE
RÉSERVE DE PARC NATIONAL PACIFIC RIM

Gordon River Indian Reserve 2
RÉSERVE INDIENNE GORDON RIVER 2

Pacific Rim National Park Reserve
RÉSERVE DE PARC NATIONAL PACIFIC RIM

Pachena Indian Reserve 1
RÉSERVE INDIENNE PACHEENA 1

Port Renfrew

Botanical Beach
Provincial Park

Hammond Rocks
Cerantes Rocks

San Juan Point

Woods Nose

Adze Head

Hotel

Communication

Water

Community Centre

Sewage

Snuggery Cove

Thrasher Cove

Quarternide Rocks

Kellett Rock

Island

Hammond Rocks

Cerantes Rocks

San Juan Point

Woods Nose

Adze Head

Hotel

Communication

Water

Community Centre

Sewage

Snuggery Cove

Thrasher Cove

Quarternide Rocks

Kellett Rock

Island

Hammond Rocks

Cerantes Rocks

San Juan Point

Woods Nose

Adze Head

Hotel

Communication

Water

Community Centre

Sewage

Snuggery Cove

Thrasher Cove

Quarternide Rocks

Kellett Rock

Island

Hammond Rocks

Cerantes Rocks

San Juan Point

Woods Nose

Adze Head

Hotel

Communication

Water

Community Centre

Sewage

Snuggery Cove

Thrasher Cove

Quarternide Rocks

Kellett Rock

Island

Hammond Rocks

Cerantes Rocks

San Juan Point

Woods Nose

Adze Head

Hotel

Communication

Water

Community Centre

Sewage

Snuggery Cove

Thrasher Cove

Quarternide Rocks

Kellett Rock

Island

Hammond Rocks

Cerantes Rocks

San Juan Point

Woods Nose

Adze Head

Hotel

Communication

Water

Community Centre

Sewage

Snuggery Cove

Thrasher Cove

Quarternide Rocks

Kellett Rock

Island

Hammond Rocks

Cerantes Rocks

San Juan Point

Woods Nose

Adze Head

Hotel

Communication

Water

Community Centre

Sewage

Snuggery Cove

Thrasher Cove

Quarternide Rocks

Kellett Rock

Island

Hammond Rocks

Cerantes Rocks

San Juan Point

Woods Nose

Adze Head

Hotel

Communication

Water

Community Centre

Sewage

Snuggery Cove

Thrasher Cove

Quarternide Rocks

Kellett Rock

Island

Hammond Rocks

Cerantes Rocks

San Juan Point

Woods Nose

Adze Head

Hotel

Communication

Water

Community Centre

Sewage

Snuggery Cove

Thrasher Cove

Quarternide Rocks

Kellett Rock

Island

Hammond Rocks

Cerantes Rocks

San Juan Point

Woods Nose

Adze Head

Hotel

Communication

Water

Community Centre

Sewage

Snuggery Cove

Thrasher Cove

Quarternide Rocks

Kellett Rock

Island

Hammond Rocks

Cerantes Rocks

San Juan Point

Woods Nose

Adze Head

Hotel

Communication

Water

Community Centre

Sewage

Snuggery Cove

Thrasher Cove

Quarternide Rocks

Kellett Rock

Island

Hammond Rocks

Cerantes Rocks

San Juan Point

Woods Nose

Adze Head

Hotel

Communication

Water

Community Centre

Sewage

Snuggery Cove

Thrasher Cove

Quarternide Rocks

Kellett Rock

Island

Hammond Rocks

Cerantes Rocks

San Juan Point

Woods Nose

Adze Head

Hotel

Communication

Water

Community Centre

Sewage

Snuggery Cove

Thrasher Cove

Quarternide Rocks

Kellett Rock

Island

Hammond Rocks

Cerantes Rocks

San Juan Point

Woods Nose

Adze Head

Hotel

Communication

Water

Community Centre

Sewage

Snuggery Cove

Thrasher Cove

Quarternide Rocks

Kellett Rock

Island

Hammond Rocks

Cerantes Rocks

San Juan Point

Woods Nose

Adze Head

Hotel

Communication

Water

Community Centre

Sewage

Snuggery Cove

Thrasher Cove

Quarternide Rocks

Kellett Rock

Island

Hammond Rocks

Cerantes Rocks

San Juan Point

Woods Nose

Adze Head

Hotel

Communication

Water

Community Centre

Sewage

Snuggery Cove

Thrasher Cove

Quarternide Rocks

Kellett Rock

Island

Hammond Rocks

Cerantes Rocks

San Juan Point

Woods Nose

Adze Head

Hotel

Communication

Water

Community Centre

Sewage

Snuggery Cove

Thrasher Cove

Quarternide Rocks

Kellett Rock

Island

Hammond Rocks

Cerantes Rocks

San Juan Point

Woods Nose

Adze Head

Hotel

Communication

Water

Community Centre

Sewage

Snuggery Cove

Thrasher Cove

Quarternide Rocks

Kellett Rock

Island

Hammond Rocks

Cerantes Rocks

San Juan Point

Woods Nose

Adze Head

Hotel

Communication

Water

Community Centre

Sewage

Snuggery Cove

Thrasher Cove

Quarternide Rocks

Kellett Rock

Island

Hammond Rocks

Cerantes Rocks

San Juan Point

Woods Nose

Adze Head

Hotel

Communication

Water

Community Centre

Sewage

Snuggery Cove

Thrasher Cove

Quarternide Rocks

Kellett Rock

Island

Hammond Rocks

Cerantes Rocks

San Juan Point

Woods Nose

Adze Head

Hotel

Communication

Water

Community Centre

Sewage



ALS Chemex

EXCELLENCE IN ANALYTICAL CHEMISTRY

ALS Canada Ltd.

212 Brooksbank Avenue

North Vancouver BC V7J 2C1

Phone: 604 984 0221 Fax: 604 984 0218

To: TRES GUIIS MINERALS LTD.

P.O. BOX 374

DUNCAN BC V9L 3X5

Page: 1

Finalized Date: 18-FEB-2005

This copy reported on 22-MAR-2005

Account: TREGUI

CERTIFICATE VA05011410

Project:

P.O. No.:

This report is for 9 Rock samples submitted to our lab in Vancouver, BC, Canada on 15-FEB-2005.

The following have access to data associated with this certificate:

ROD KIRKHAM

SAMPLE PREPARATION

ALS CODE	DESCRIPTION
WEI-21	Received Sample Weight
LOG-22	Sample login - Rcd w/o BarCode
CRU-31	Fine crushing - 70% <2mm
SPL-21	Split sample - riffle splitter
PUL-31	Pulverize split to 85% <75 um

ANALYTICAL PROCEDURES

ALS CODE	DESCRIPTION	INSTRUMENT
ME-ICP41	34 Element Aqua Regia ICP-AES	ICP-AES
Au-AA23	Au 30g FA-AA finish	AAS

To: TRES GUIIS MINERALS LTD.
ATTN: ROD KIRKHAM
213-7198 VANTAGE WAY
DELTA BC V4G 1K7

This is the Final Report and supersedes any preliminary report with this certificate number. Results apply to samples as submitted. All pages of this report have been checked and approved for release.

Signature:



ALS Chemex

EXCELLENCE IN ANALYTICAL CHEMISTRY

ALS Canada Ltd.

212 Brooksbank Avenue
North Vancouver BC V7J 2C1
Phone: 604 984 0221 Fax: 604 984 0218

To: TRES GUI MINERALS LTD.

P.O. BOX 374
DUNCAN BC V9L 3X5

CERTIFICATE OF ANALYSIS VA05011410

Method Analyte Units LOR	WEI-21 Recvd Wt. kg	Au-AA23 Au ppm	ME-ICP41 Ag ppm	ME-ICP41 Al %	ME-ICP41 As ppm	ME-ICP41 B ppm	ME-ICP41 Ba ppm	ME-ICP41 Be ppm	ME-ICP41 Bi ppm	ME-ICP41 Ca %	ME-ICP41 Cd ppm	ME-ICP41 Co ppm	ME-ICP41 Cr ppm	ME-ICP41 Cu ppm	ME-ICP41 Fe %
Sample Description	0.02	0.005	0.2	0.01	2	10	10	0.5	2	0.01	0.5	1	1	1	0.01
KQ-05-2	0.20	0.007	0.2	2.64	4	<10	60	<0.5	<2	1.73	<0.5	16	153	213	3.38
KQ-05-3B	0.82	<0.005	0.2	0.74	2	<10	70	<0.5	<2	0.34	<0.5	5	51	81	1.47
KQ-05-3C	0.64	<0.005	<0.2	1.00	<2	<10	70	0.6	<2	0.36	<0.5	4	48	24	2.17
KQ-05-3D	0.60	<0.005	0.2	1.69	2	<10	30	0.6	<2	1.05	<0.5	12	43	150	3.18
KQ-05-3E	0.42	<0.005	<0.2	1.50	<2	<10	70	<0.5	<2	0.63	<0.5	7	70	33	2.76
KQ-05-3F	0.62	<0.005	<0.2	2.48	<2	10	70	<0.5	<2	1.31	<0.5	14	17	94	4.65
KQ-05-4	0.54	0.016	<0.2	0.88	9	<10	10	<0.5	<2	0.16	<0.5	1165	57	185	30.7
KQ-05-5	0.64	0.089	3.0	0.53	137	<10	10	<0.5	<2	4.14	<0.5	337	3	9640	>50
KQ-05-10B	0.30	0.007	<0.2	1.40	8	<10	200	<0.5	<2	0.85	<0.5	63	120	300	7.85



ALS Chemex

EXCELLENCE IN ANALYTICAL CHEMISTRY

ALS Canada Ltd.

212 Brooksbank Avenue
 North Vancouver BC V7J 2C1
 Phone: 604 984 0221 Fax: 604 984 0218

To: TRES GUIIS MINERALS LTD.

P.O. BOX 374
 DUNCAN BC V9L 3X5

Page: 2 - B

Total # Pages: 2 (A - C)

Finalized Date: 18-FEB-2005

Account: TREGUI

CERTIFICATE OF ANALYSIS VA05011410

Sample Description	Method Analyte Units LOR	ME-ICP41	ME-ICP41	ME-ICP41	ME-ICP41	ME-ICP41	ME-ICP41	ME-ICP41	ME-ICP41	ME-ICP41	ME-ICP41	ME-ICP41	ME-ICP41	ME-ICP41	ME-ICP41	
		Ga	Hg	K	La	Mg	Mn	Mo	Na	Ni	P	Pb	S	Sb	Sc	Sr
		ppm	ppm	%	ppm	%	ppm	ppm	%	ppm	ppm	ppm	%	ppm	ppm	ppm
		10	1	0.01	10	0.01	5	1	0.01	1	10	2	0.01	2	1	1
KQ-05-2		10	1	0.13	<10	1.49	239	1	0.30	60	260	27	0.08	<2	9	48
KQ-05-3B		<10	<1	0.11	10	0.42	122	4	0.08	2	380	18	0.79	2	2	19
KQ-05-3C		10	<1	0.15	20	0.32	388	4	0.09	2	270	8	0.41	<2	6	16
KQ-05-3D		10	<1	0.13	10	0.87	351	2	0.06	6	650	3	1.54	2	7	28
KQ-05-3E		<10	<1	0.15	10	0.81	253	4	0.09	5	660	4	0.14	<2	5	42
KQ-05-3F		10	<1	0.21	10	1.39	370	1	0.13	4	1260	<2	0.56	<2	8	55
KQ-05-4		<10	1	0.04	<10	0.32	95	1	0.04	83	220	<2	>10.0	<2	2	10
KQ-05-5		<10	2	<0.01	<10	0.17	3230	4	0.01	45	80	<2	3.26	<2	1	2
KQ-05-10B		10	<1	0.83	<10	0.70	651	1	0.07	25	460	2	1.38	<2	5	22



ALS Chemex

EXCELLENCE IN ANALYTICAL CHEMISTRY

ALS Canada Ltd.

212 Brooksbank Avenue
North Vancouver BC V7J 2C1
Phone: 604 984 0221 Fax: 604 984 0218

To: TRES GUI MINERALS LTD.
P.O. BOX 374
DUNCAN BC V9L 3X5

Page: 2 - C
Total # Pages: 2 (A - C)
Finalized Date: 18-FEB-2005
Account: TREGUI

CERTIFICATE OF ANALYSIS VA05011410

Sample Description	Method Analyte Units LOR	ME-ICP41	ME-ICP41	ME-ICP41	ME-ICP41	ME-ICP41	ME-ICP41
		Ti	Ti	U	V	W	Zn
		%	ppm	ppm	ppm	ppm	ppm
		0.01	10	10	1	10	2
KQ-05-2		0.12	<10	<10	112	<10	91
KQ-05-3B		0.08	<10	<10	27	<10	27
KQ-05-3C		0.12	<10	<10	13	<10	34
KQ-05-3D		0.19	<10	<10	68	<10	32
KQ-05-3E		0.19	<10	<10	73	<10	23
KQ-05-3F		0.36	<10	<10	215	<10	30
KQ-05-4		0.02	10	<10	28	<10	4
KQ-05-5		0.01	10	<10	78	<10	255
KQ-05-10B		0.15	<10	<10	55	<10	58



ALS Chemex

EXCELLENCE IN ANALYTICAL CHEMISTRY

ALS Canada Ltd.

212 Brooksbank Avenue

North Vancouver BC V7J 2C1

Phone: 604 984 0221 Fax: 604 984 0218

To: TRES GUIIS MINERALS LTD.

P.O. BOX 374

DUNCAN BC V9L 3X5

Page: 1

Finalized Date: 18-FEB-2005

This copy reported on 22-MAR-2005

Account: TREGUI

CERTIFICATE VA05011410

Project:

P.O. No.:

This report is for 9 Rock samples submitted to our lab in Vancouver, BC, Canada on 15-FEB-2005.

The following have access to data associated with this certificate:

ROD KIRKHAM

SAMPLE PREPARATION

ALS CODE	DESCRIPTION
WEI-21	Received Sample Weight
LOG-22	Sample login - Rcd w/o BarCode
CRU-31	Fine crushing - 70% <2mm
SPL-21	Split sample - riffle splitter
PUL-31	Pulverize split to 85% <75 um

ANALYTICAL PROCEDURES

ALS CODE	DESCRIPTION	INSTRUMENT
ME-ICP41	34 Element Aqua Regia ICP-AES	ICP-AES
Au-AA23	Au 30g FA-AA finish	AAS

To: TRES GUIIS MINERALS LTD.
ATTN: ROD KIRKHAM
213-7198 VANTAGE WAY
DELTA BC V4G 1K7

This is the Final Report and supersedes any preliminary report with this certificate number. Results apply to samples as submitted. All pages of this report have been checked and approved for release.

Signature: _____



ALS Chemex

EXCELLENCE IN ANALYTICAL CHEMISTRY

ALS Canada Ltd.

212 Brooksbank Avenue
 North Vancouver BC V7J 2C1
 Phone: 604 984 0221 Fax: 604 984 0218

To: TRES GUIIS MINERALS LTD.

P.O. BOX 374
 DUNCAN BC V9L 3X5

CERTIFICATE OF ANALYSIS VA05011410

Sample Description	Method Analyte Units LOR	WEI-21	Au-AA23	ME-ICP41	ME-ICP41	ME-ICP41	ME-ICP41	ME-ICP41	ME-ICP41	ME-ICP41	ME-ICP41	ME-ICP41	ME-ICP41	ME-ICP41	ME-ICP41	ME-ICP41
		Recvd Wt. kg	Au ppm	Ag ppm	Al %	As ppm	B ppm	Ba ppm	Be ppm	Bi ppm	Ca %	Cd ppm	Co ppm	Cr ppm	Cu ppm	Fe %
		0.02	0.005	0.2	0.01	2	10	10	0.5	2	0.01	0.5	1	1	1	0.01
KQ-05-2		0.20	0.007	0.2	2.84	4	<10	60	<0.5	<2	1.73	<0.5	16	153	213	3.38
KQ-05-3B		0.82	<0.005	0.2	0.74	2	<10	70	<0.5	<2	0.34	<0.5	5	51	81	1.47
KQ-05-3C		0.64	<0.005	<0.2	1.00	<2	<10	70	0.6	<2	0.36	<0.5	4	48	24	2.17
KQ-05-3D		0.60	<0.005	0.2	1.89	2	<10	30	0.6	<2	1.05	<0.5	12	43	150	3.18
KQ-05-3E		0.42	<0.005	<0.2	1.50	<2	<10	70	<0.5	<2	0.63	<0.5	7	70	33	2.76
KQ-05-3F		0.62	<0.005	<0.2	2.48	<2	10	70	<0.5	<2	1.31	<0.5	14	17	94	4.65
KQ-05-4		0.54	0.016	<0.2	0.88	9	<10	10	<0.5	<2	0.16	<0.5	1165	57	185	30.7
KQ-05-5		0.64	0.089	3.0	0.53	137	<10	10	<0.5	<2	4.14	<0.5	337	3	9640	>50
KQ-05-10B		0.30	0.007	<0.2	1.40	8	<10	200	<0.5	<2	0.85	<0.5	63	120	300	7.85



ALS Chemex

EXCELLENCE IN ANALYTICAL CHEMISTRY

ALS Canada Ltd.

212 Brooksbank Avenue
 North Vancouver BC V7J 2C1
 Phone: 604 984 0221 Fax: 604 984 0218

To: TRES GUIIS MINERALS LTD.
 P.O. BOX 374
 DUNCAN BC V9L 3X5

Page: 2 - B
 Total # Pages: 2 (A - C)
 Finalized Date: 18-FEB-2005
 Account: TREGUI

CERTIFICATE OF ANALYSIS VA05011410

Sample Description	Method Analyte Units LOR	ME-ICP41	ME-ICP41	ME-ICP41	ME-ICP41	ME-ICP41	ME-ICP41	ME-ICP41	ME-ICP41	ME-ICP41	ME-ICP41	ME-ICP41	ME-ICP41	ME-ICP41	ME-ICP41	ME-ICP41
		Ga	Hg	K	La	Mg	Mn	Mo	Na	Ni	P	Pb	S	Sb	Sc	Sr
		ppm	ppm	%	ppm	%	ppm	ppm	%	ppm	ppm	ppm	%	ppm	ppm	ppm
		10	1	0.01	10	0.01	5	1	0.01	1	10	2	0.01	2	1	1
KQ-05-2		10	1	0.13	<10	1.49	239	1	0.30	60	260	27	0.08	<2	9	48
KQ-05-3B		<10	<1	0.11	10	0.42	122	4	0.08	2	380	18	0.79	2	2	19
KQ-05-3C		10	<1	0.15	20	0.32	388	4	0.09	2	270	8	0.41	<2	6	16
KQ-05-3D		10	<1	0.13	10	0.87	351	2	0.06	6	650	3	1.54	2	7	28
KQ-05-3E		<10	<1	0.15	10	0.81	253	4	0.09	5	660	4	0.14	<2	5	42
KQ-05-3F		10	<1	0.21	10	1.39	370	1	0.13	4	1260	<2	0.56	<2	8	55
KQ-05-4		<10	1	0.04	<10	0.32	95	1	0.04	83	220	<2	>10.0	<2	2	10
KQ-05-5		<10	2	<0.01	<10	0.17	3230	4	0.01	45	80	<2	3.26	<2	1	2
KQ-05-10B		10	<1	0.83	<10	0.70	651	1	0.07	25	460	2	1.38	<2	5	22



ALS Chemex

EXCELLENCE IN ANALYTICAL CHEMISTRY

ALS Canada Ltd.

212 Brooksbank Avenue
North Vancouver BC V7J 2C1
Phone: 604 984 0221 Fax: 604 984 0218

To: TRES GUIIS MINERALS LTD.
P.O. BOX 374
DUNCAN BC V9L 3X5

Page: 2 - C
Total # Pages: 2 (A - C)
Finalized Date: 18-FEB-2005
Account: TREGUI

CERTIFICATE OF ANALYSIS VA05011410

Sample Description	Method	ME-ICP41	ME-ICP41	ME-ICP41	ME-ICP41	ME-ICP41	ME-ICP41
	Analyte	Ti	Ti	U	V	W	Zn
	Units LOR	%	ppm	ppm	ppm	ppm	ppm
		0.01	10	10	1	10	2
KQ-05-2		0.12	<10	<10	112	<10	91
KQ-05-3B		0.08	<10	<10	27	<10	27
KQ-05-3C		0.12	<10	<10	13	<10	34
KQ-05-3D		0.19	<10	<10	68	<10	32
KQ-05-3E		0.19	<10	<10	73	<10	23
KQ-05-3F		0.36	<10	<10	215	<10	30
KQ-05-4		0.02	10	<10	28	<10	4
KQ-05-5		0.01	10	<10	78	<10	255
KQ-05-10B		0.15	<10	<10	55	<10	58



ALS Chemex

EXCELLENCE IN ANALYTICAL CHEMISTRY

ALS Canada Ltd.

212 Brooksbank Avenue
North Vancouver BC V7J 2C1
Phone: 604 984 0221 Fax: 604 984 0218

To: TRES GUIJ MINERALS LTD.

P.O. BOX 374

DUNCAN BC V9L 3X5

Page: 1

Finalized Date: 18-FEB-2005

This copy reported on 22-MAR-2005

Account: TREGUI

CERTIFICATE VA05011410

Project:

P.O. No.:

This report is for 9 Rock samples submitted to our lab in Vancouver, BC, Canada on 15-FEB-2005.

The following have access to data associated with this certificate:

ROD KIRKHAM

SAMPLE PREPARATION

ALS CODE	DESCRIPTION
WEI-21	Received Sample Weight
LOG-22	Sample login - Rcd w/o BarCode
CRU-31	Fine crushing - 70% <2mm
SPL-21	Split sample - riffle splitter
PUL-31	Pulverize split to 85% <75 um

ANALYTICAL PROCEDURES

ALS CODE	DESCRIPTION	INSTRUMENT
ME-ICP41	34 Element Aqua Regia ICP-AES	ICP-AES
Au-AA23	Au 30g FA-AA finish	AAS

To: TRES GUIJ MINERALS LTD.
ATTN: ROD KIRKHAM
213-7198 VANTAGE WAY
DELTA BC V4G 1K7

This is the Final Report and supersedes any preliminary report with this certificate number. Results apply to samples as submitted. All pages of this report have been checked and approved for release.

Signature:



ALS Chemex

EXCELLENCE IN ANALYTICAL CHEMISTRY

ALS Canada Ltd.

212 Brooksbank Avenue

North Vancouver BC V7J 2C1

Phone: 604 984 0221 Fax: 604 984 0218

To: TRES GUIIS MINERALS LTD.

P.O. BOX 374

DUNCAN BC V9L 3X5

Page: 2 - A

Total # Pages: 2 (A - C)

Finalized Date: 18-FEB-2005

Account: TREGUI

CERTIFICATE OF ANALYSIS VA05011410

Sample Description	Method Analyte Units LOR	WEI-21	Au-AA23	ME-ICP41	ME-ICP41	ME-ICP41	ME-ICP41	ME-ICP41	ME-ICP41	ME-ICP41	ME-ICP41	ME-ICP41	ME-ICP41	ME-ICP41	ME-ICP41	ME-ICP41
		Recvd Wt.	Au	Ag	Al	As	B	Ba	Be	Bi	Ca	Cd	Co	Cr	Cu	Fe
		kg	ppm	ppm	%	ppm	ppm	ppm	ppm	ppm	%	ppm	ppm	ppm	ppm	ppm
		0.02	0.005	0.2	0.01	2	10	10	0.5	2	0.01	0.5	1	1	1	0.01
KQ-05-2		0.20	0.007	0.2	2.64	4	<10	60	<0.5	<2	1.73	<0.5	16	153	213	3.38
KQ-05-3B		0.82	<0.005	0.2	0.74	2	<10	70	<0.5	<2	0.34	<0.5	5	51	81	1.47
KQ-05-3C		0.64	<0.005	<0.2	1.00	<2	<10	70	0.6	<2	0.36	<0.5	4	48	24	2.17
KQ-05-3D		0.60	<0.005	0.2	1.69	2	<10	30	0.6	<2	1.05	<0.5	12	43	150	3.18
KQ-05-3E		0.42	<0.005	<0.2	1.50	<2	<10	70	<0.5	<2	0.63	<0.5	7	70	33	2.76
KQ-05-3F		0.62	<0.005	<0.2	2.48	<2	10	70	<0.5	<2	1.31	<0.5	14	17	94	4.65
KQ-05-4		0.54	0.016	<0.2	0.88	9	<10	10	<0.5	<2	0.16	<0.5	1165	57	185	30.7
KQ-05-5		0.64	0.089	3.0	0.53	137	<10	10	<0.5	<2	4.14	<0.5	337	3	9640	>50
KQ-05-10B		0.30	0.007	<0.2	1.40	8	<10	200	<0.5	<2	0.85	<0.5	63	120	300	7.85



ALS Chemex

EXCELLENCE IN ANALYTICAL CHEMISTRY

ALS Canada Ltd.

212 Brooksbank Avenue

North Vancouver BC V7J 2C1

Phone: 604 984 0221 Fax: 604 984 0218

To: TRES GUIIS MINERALS LTD.

P.O. BOX 374

DUNCAN BC V9L 3X5

Page: 2 - B

Total # Pages: 2 (A - C)

Finalized Date: 18-FEB-2005

Account: TREGUI

CERTIFICATE OF ANALYSIS VA05011410

Sample Description	Method Analyte Units LOR	ME-ICP41	ME-ICP41	ME-ICP41	ME-ICP41	ME-ICP41	ME-ICP41	ME-ICP41	ME-ICP41	ME-ICP41	ME-ICP41	ME-ICP41	ME-ICP41	ME-ICP41	ME-ICP41	ME-ICP41
		Ga ppm	Hg ppm	K %	La ppm	Mg %	Mn ppm	Mo ppm	Na %	Ni ppm	P ppm	Pb ppm	S %	Sb ppm	Sc ppm	Sr ppm
		10	1	0.01	10	0.01	5	1	0.01	1	10	2	0.01	2	1	1
KQ-05-2		10	1	0.13	<10	1.49	239	1	0.30	60	260	27	0.08	<2	9	48
KQ-05-3B		<10	<1	0.11	10	0.42	122	4	0.08	2	380	18	0.79	2	2	19
KQ-05-3C		10	<1	0.15	20	0.32	388	4	0.09	2	270	8	0.41	<2	6	16
KQ-05-3D		10	<1	0.13	10	0.87	351	2	0.06	6	650	3	1.54	2	7	28
KQ-05-3E		<10	<1	0.15	10	0.81	253	4	0.09	5	660	4	0.14	<2	5	42
KQ-05-3F		10	<1	0.21	10	1.39	370	1	0.13	4	1260	<2	0.56	<2	8	55
KQ-05-4		<10	1	0.04	<10	0.32	95	1	0.04	83	220	<2	>10.0	<2	2	10
KQ-05-5		<10	2	<0.01	<10	0.17	3230	4	0.01	45	80	<2	3.26	<2	1	2
KQ-05-10B		10	<1	0.83	<10	0.70	651	1	0.07	25	460	2	1.38	<2	5	22



ALS Chemex

EXCELLENCE IN ANALYTICAL CHEMISTRY

ALS Canada Ltd.

212 Brooksbank Avenue

North Vancouver BC V7J 2C1

Phone: 604 984 0221 Fax: 604 984 0218

To: TRES GUIIS MINERALS LTD.

P.O. BOX 374

DUNCAN BC V9L 3X5

Page: 2 - C

Total # Pages: 2 (A - C)

Finalized Date: 18-FEB-2005

Account: TREGUI

CERTIFICATE OF ANALYSIS VA05011410

Sample Description	Method Analyte Units LOR	ME-ICP41	ME-ICP41	ME-ICP41	ME-ICP41	ME-ICP41	ME-ICP41
		Ti %	Ti ppm	U ppm	V ppm	W ppm	Zn ppm
		0.01	10	10	1	10	2
KQ-05-2		0.12	<10	<10	112	<10	91
KQ-05-3B		0.08	<10	<10	27	<10	27
KQ-05-3C		0.12	<10	<10	13	<10	34
KQ-05-3D		0.19	<10	<10	68	<10	32
KQ-05-3E		0.19	<10	<10	73	<10	23
KQ-05-3F		0.36	<10	<10	215	<10	30
KQ-05-4		0.02	10	<10	28	<10	4
KQ-05-5		0.01	10	<10	78	<10	255
KQ-05-10B		0.15	<10	<10	55	<10	56

VA05011410 - Finalized

CLIENT : "TREGUI - Tre Guis Minerals Ltd."

of SAMPLES : 9

DATE RECEIVED : 2005-02-15 DATE FINALIZED : 2005-02-18

PROJECT : " "

CERTIFICATE COMMENTS : ""

PO NUMBER : " "

	Au-AA23	ME-ICP41	ME-ICP41	ME-ICP41	ME-ICP41	ME-ICP41	ME-ICP41	ME-ICP41
SAMPLE	Au	Ag	Al	As	B	Ba	Be	Bi
DESCRIPT	ppm	ppm	%	ppm	ppm	ppm	ppm	ppm
KQ-05-2	0.007		0.2	2.64	4 <10		60 <0.5	<2
KQ-05-3B	<0.005		0.2	0.74	2 <10		70 <0.5	<2
KQ-05-3C	<0.005	<0.2		1 <2	<10		70	0.6 <2
KQ-05-3D	<0.005		0.2	1.69	2 <10		30	0.6 <2
KQ-05-3E	<0.005	<0.2		1.5 <2	<10		70 <0.5	<2
KQ-05-3F	<0.005	<0.2		2.48 <2		10	70 <0.5	<2
KQ-05-4	0.016	<0.2		0.88	9 <10		10 <0.5	<2
KQ-05-5	0.089		3	0.53	137 <10		10 <0.5	<2
KQ-05-10E	0.007	<0.2		1.4	8 <10		200 <0.5	<2

ME-ICP41	ME-ICP41	ME-ICP41	ME-ICP41	ME-ICP41	ME-ICP41	ME-ICP41	ME-ICP41	ME-ICP41	
La	Mg	Mn	Mo	Na	Ni	P	Pb	S	
ppm	%	ppm	ppm	%	ppm	ppm	ppm	%	
<10		1.49	239	1	0.3	60	260	27	0.08
	10	0.42	122	4	0.08	2	380	18	0.79
	20	0.32	388	4	0.09	2	270	8	0.41
	10	0.87	351	2	0.06	6	650	3	1.54
	10	0.81	253	4	0.09	5	660	4	0.14
	10	1.39	370	1	0.13	4	1260	<2	0.56
<10		0.32	95	1	0.04	83	220	<2	>10.0
<10		0.17	3230	4	0.01	45	80	<2	3.26
<10		0.7	651	1	0.07	25	460	2	1.38

ME-ICP41 Sb ppm	ME-ICP41 Sc ppm	ME-ICP41 Sr ppm	ME-ICP41 Ti %	ME-ICP41 Tl ppm	ME-ICP41 U ppm	ME-ICP41 V ppm	ME-ICP41 W ppm	ME-ICP41 Zn ppm
<2		9	48	0.12 <10	<10		112 <10	91
	2	2	19	0.08 <10	<10		27 <10	27
<2		6	16	0.12 <10	<10		13 <10	34
	2	7	28	0.19 <10	<10		68 <10	32
<2		5	42	0.19 <10	<10		73 <10	23
<2		8	55	0.36 <10	<10		215 <10	30
<2		2	10	0.02	10 <10		28 <10	4
<2		1	2	0.01	10 <10		78 <10	255
<2		5	22	0.15 <10	<10		55 <10	56

ME-ICP41	ME-ICP41	ME-ICP41	ME-ICP41	ME-ICP41	ME-ICP41	ME-ICP41	ME-ICP41	ME-ICP41	ME-ICP41	
S	Sb	Sc	Sr	Ti	Tl	U	V	W	Zn	
%	ppm	ppm	ppm	%	ppm	ppm	ppm	ppm	ppm	
0.08	<2		9	48	0.12	<10		112	<10	91
0.79		2	2	19	0.08	<10		27	<10	27
0.41	<2		6	16	0.12	<10		13	<10	34
1.54		2	7	28	0.19	<10		68	<10	32
0.14	<2		5	42	0.19	<10		73	<10	23
0.56	<2		8	55	0.36	<10		215	<10	30
>10.0	<2		2	10	0.02	10	<10	28	<10	4
3.26	<2		1	2	0.01	10	<10	78	<10	255
1.38	<2		5	22	0.15	<10		55	<10	56

ME-ICP41	ME-ICP41	ME-ICP41	ME-ICP41	ME-ICP41	ME-ICP41	ME-ICP41	ME-ICP41	ME-ICP41	ME-ICP41	ME-ICP41	ME-ICP41	ME-ICP41	ME-ICP41
Cu	Fe	Ga	Hg	K	La	Mg	Mn	Mo	Na	Ni	P	Pb	
ppm	%	ppm	ppm	%	ppm	%	ppm	ppm	%	ppm	ppm	ppm	
213	3.38	10	10	1	0.13	<10	1.49	239	1	0.3	60	260	27
81	1.47	<10	<1		0.11	10	0.42	122	4	0.08	2	380	18
24	2.17	10	<1		0.15	20	0.32	388	4	0.09	2	270	8
150	3.18	10	<1		0.13	10	0.87	351	2	0.06	6	650	3
33	2.76	<10	<1		0.15	10	0.81	253	4	0.09	5	660	4
94	4.65	10	<1		0.21	10	1.39	370	1	0.13	4	1260	<2
185	30.7	<10		1	0.04	<10	0.32	95	1	0.04	83	220	<2
9640	>50	<10		2	<0.01	<10	0.17	3230	4	0.01	45	80	<2
300	7.85	10	<1		0.83	<10	0.7	651	1	0.07	25	460	2

VA05011410 - Finalized

CLIENT : "TREGUI - Tre Guis Minerals Ltd."

of SAMPLES : 9

DATE RECEIVED : 2005-02-15 DATE FINALIZED : 2005-02-18

PROJECT : " "

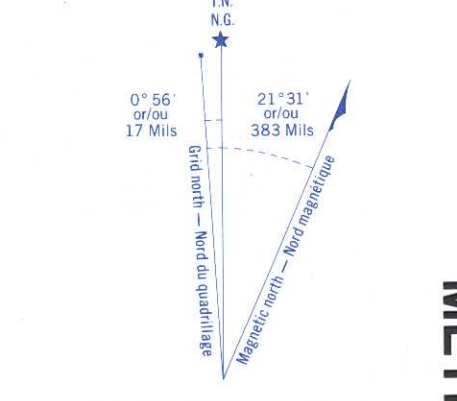
CERTIFICATE COMMENTS : ""

PO NUMBER : " "

SAMPLE	Au-AA23 Au	ME-ICP41 Ag	ME-ICP41 Al	ME-ICP41 As	ME-ICP41 B	ME-ICP41 Ba	ME-ICP41 Be	ME-ICP41 Bi	ME-ICP41 Ca	ME-ICP41 Cd	ME-ICP41 Co	ME-ICP41 Cr	
DESCRIP1	ppm	ppm	%	ppm	ppm	ppm	ppm	ppm	%	ppm	ppm	ppm	
KQ-05-2	0.007		0.2	2.64	4 <10		60 <0.5	<2		1.73 <0.5		16	153
KQ-05-3B	<0.005		0.2	0.74	2 <10		70 <0.5	<2		0.34 <0.5		5	51
KQ-05-3C	<0.005	<0.2		1 <2	<10		70	0.6 <2		0.36 <0.5		4	48
KQ-05-3D	<0.005		0.2	1.69	2 <10		30	0.6 <2		1.05 <0.5		12	43
KQ-05-3E	<0.005	<0.2		1.5 <2	<10		70 <0.5	<2		0.63 <0.5		7	70
KQ-05-3F	<0.005	<0.2		2.48 <2		10	70 <0.5	<2		1.31 <0.5		14	17
KQ-05-4	0.016	<0.2		0.88	9 <10		10 <0.5	<2		0.16 <0.5	1165		57
KQ-05-5	0.089		3	0.53	137 <10		10 <0.5	<2		4.14 <0.5		337	3
KQ-05-10E	0.007	<0.2		1.4	8 <10		200 <0.5	<2		0.85 <0.5		63	120

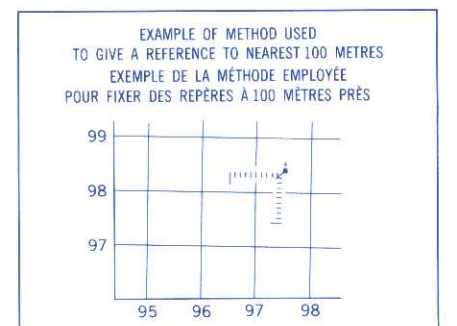
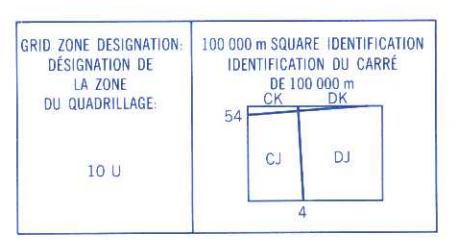


Military users refer to this map as: SERIES A 721 SERIE Réference de cette carte pour usage militaire: MAP 92 C/9 CARTE ÉDITION 5 MCE ÉDITION

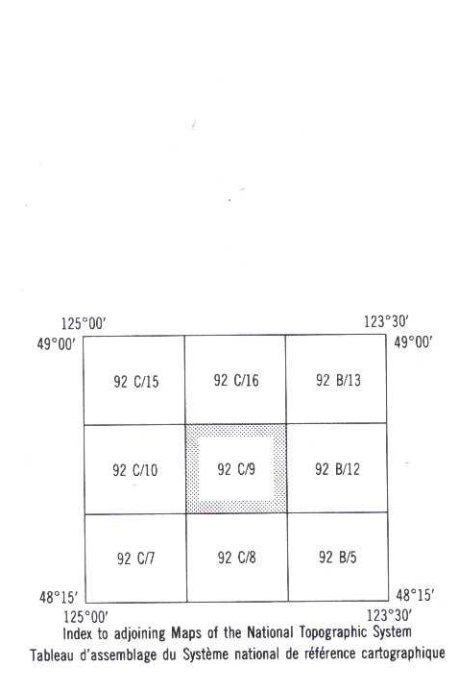


Utiliser le diagramme que pour obtenir les valeurs numériques APPROXIMATIVES MOYENNE APPROXIMATIVE AU CENTRE DE LA CARTE EN 1991. Variation annuelle décroissante 7.7

ONE THOUSAND METRE UNIVERSAL TRANSVERSE MERCATOR GRID ZONE 10 QUADRILLAGE UNIVERSEL TRANSVERSE DE MERCATOR DE MILLE MÈTRES



REFERENCE POINT CHURCH - EGLISE (see above) (see above) EASTING: Read number on grid line immediately to right of point. NORD: Lire le chiffre de la ligne de quadrillage immédiatement à gauche du point. ESTIMATED LENGTH of a square from this line eastward to the point. ESTIMER le nombre de divisions de carré entre cette ligne et le point en direction nord. GRID REFERENCE: 975984 REFERENCE AU QUADRILLAGE: 975984



PRODUCED BY THE CANADA CENTRE FOR MAPPING, DEPARTMENT OF ENERGY, MINES AND RESOURCES. INFORMATION CURRENT AS OF 1988. PUBLISHED 1992.

© 1992 HER MAJESTY THE QUEEN IN RIGHT OF CANADA. DEPARTMENT OF ENERGY, MINES AND RESOURCES.

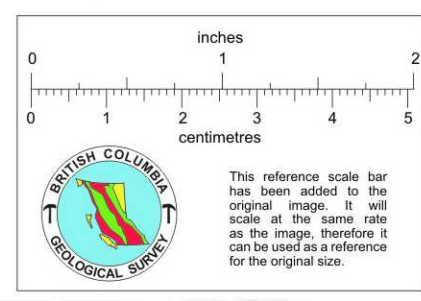


Table with 2 columns: English and French descriptions of road types and symbols. Includes symbols for paved roads, gravel roads, and various road conditions.

Scale 1:50 000 Échelle. Includes conversion scales for elevations (metres to feet) and altitudes (metres to feet). Also includes contour interval information: 'CONTOUR INTERVAL 20 METRES' and 'ÉQUIVALENCE DES COURBES 20 MÈTRES'.

Geographic coordinates and map projection information. Includes: 'Geographic: Latitude: 49° 07' N, Longitude: 123° 05' W', 'Map Projection: Transverse Mercator', and 'Datum: North American Datum 1987'.

ÉTABLI PAR LE CENTRE CANADIEN DE CARTOGRAPHIE, MINISTÈRE DE L'ÉNERGIE, DES MINES ET DES RESSOURCES. RENSEIGNEMENTS À JOUR EN 1988. PUBLIÉE EN 1992. © 1992 SA MAJESTÉ LA REINE DU QUÉBEC ET DU CANADA, MINISTÈRE DE L'ÉNERGIE, DES MINES ET DES RESSOURCES.

PORT RENFREW 92 C/9 EDITION 5

Energy, Mines and Resources Canada Énergie, Mines et Ressources Canada

