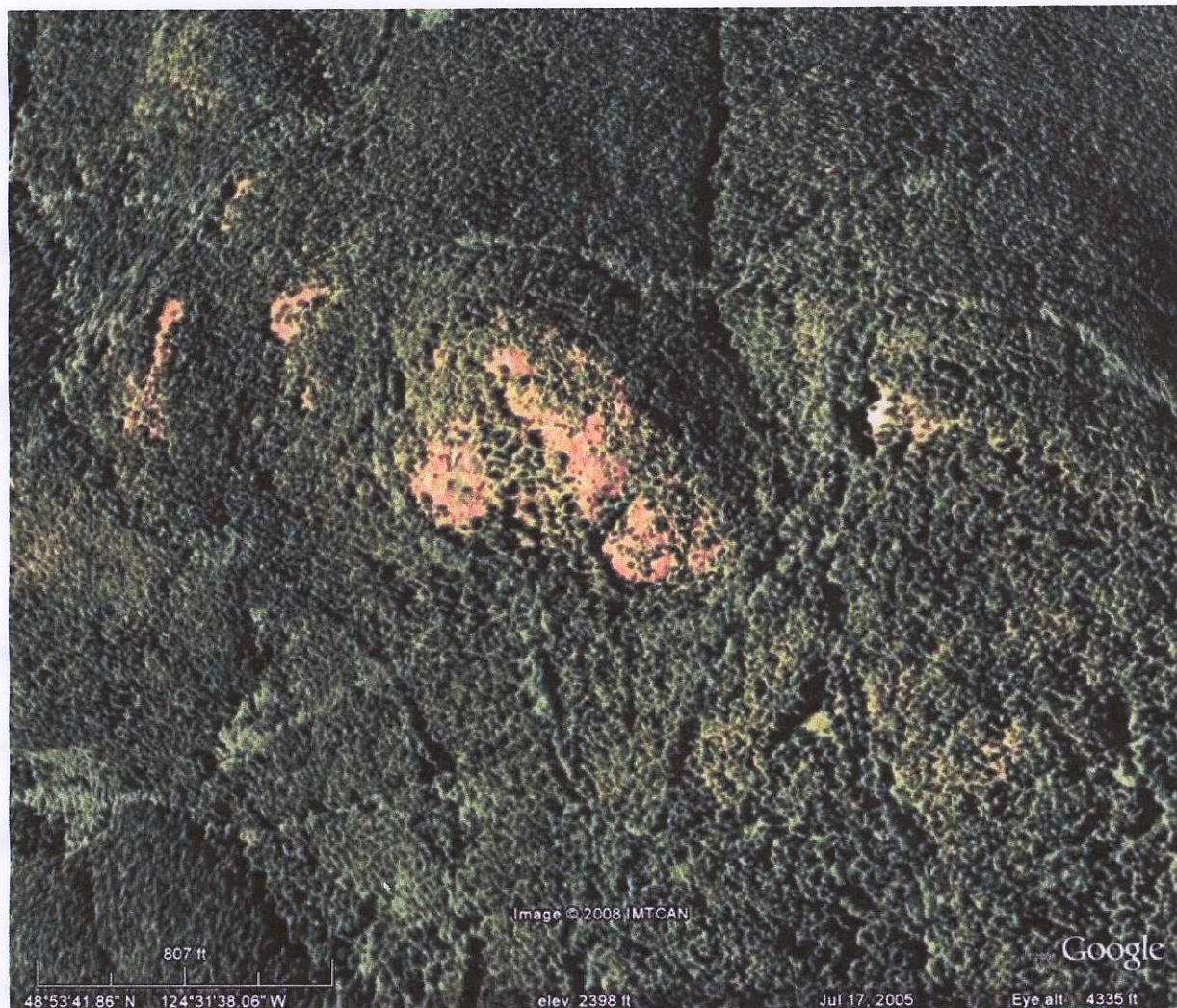


802195

92C/15.16  
Vernon Ridge

**Main Identity**

**From:** "Kelly B Funk" <funks@telusplanet.net>  
**To:** "Rod Kirkham" <rkirkham@telus.net>  
**Sent:** Tuesday, November 18, 2008 11:27 PM  
**Subject:** RE: Vernon Ridge



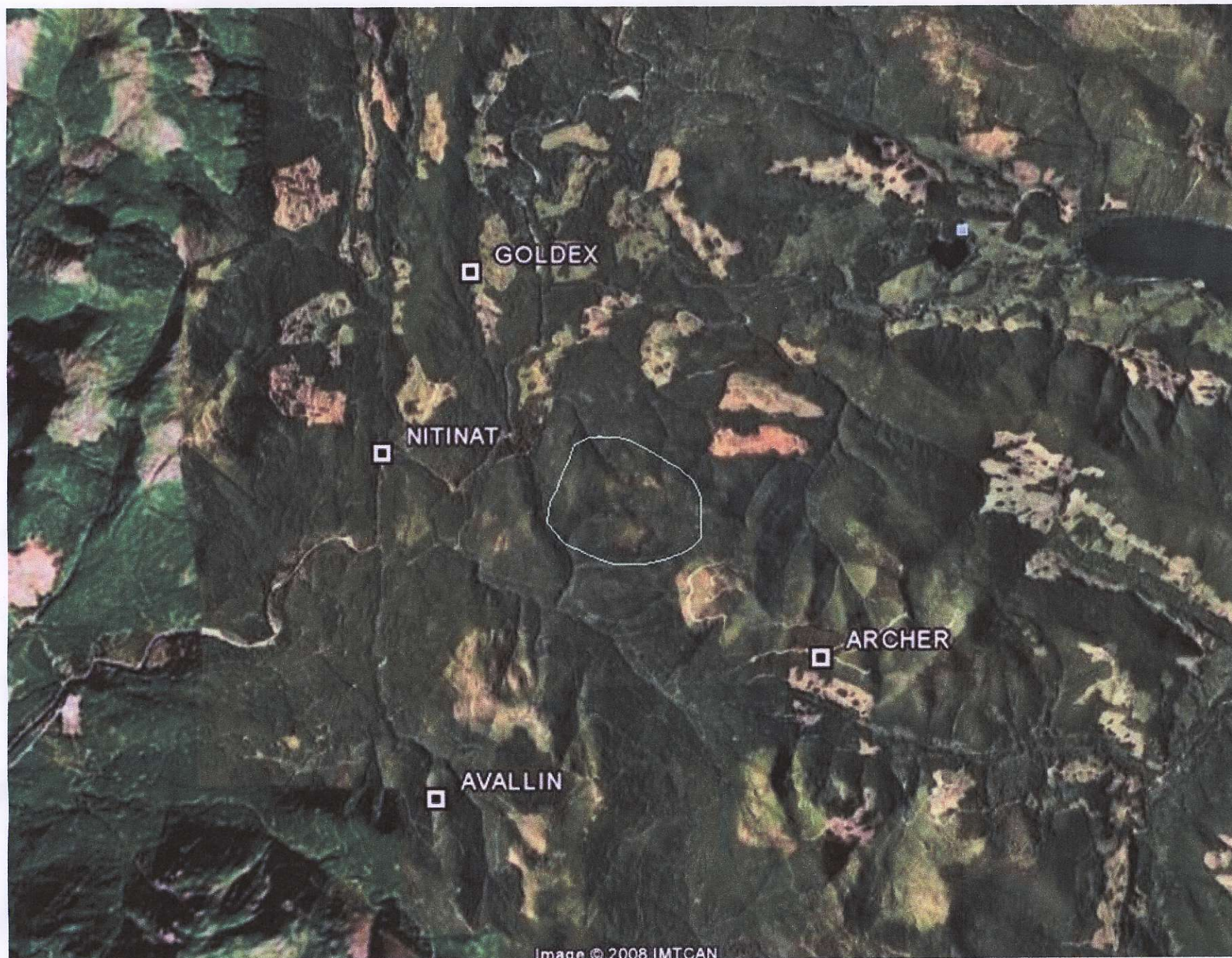


Image © 2008 IMTCAN





Image © 2008 IMTCAN  
Image © 2008 TerraMetrics  
© 2008 Tele Atlas

© 2007 Google™

Pointer 48°54'17.88" N 124°30'14.92" W elev 974 ft Streaming ||||| 100%

Eye alt 27802 ft



Image © 2008 IMTCAN

© 2007 Google

Pointer 48°54'00.50" N 124°30'36.04" W elev 1464 ft Streaming ||||| 100%

Eye alt 5166 ft



Image © 2008 IMTCAN

© 2007 Google™

Pointer 48°53'36.68" N 124°31'27.81" W elev 2479 ft Streaming ||||| 100%

Eye alt 5808 ft

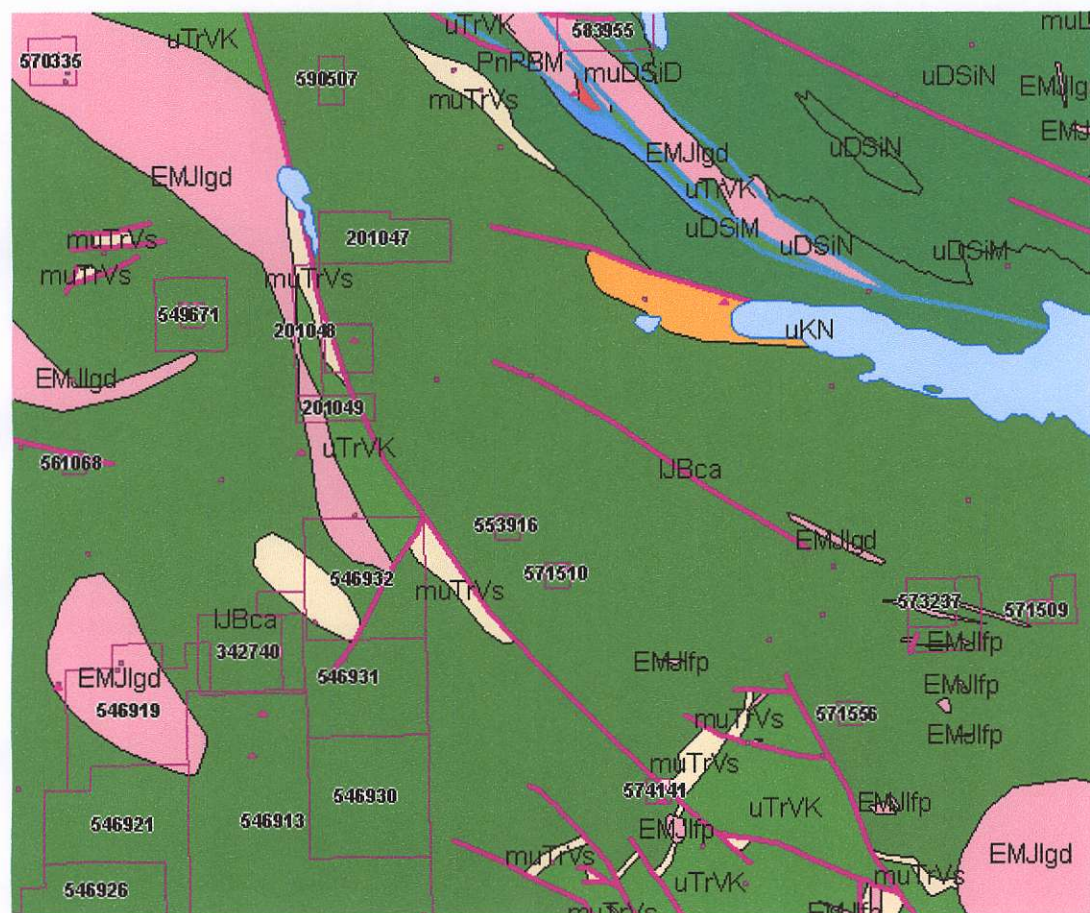


Image © 2008 IMTCAN

Google

Pointer 48°53'44.84" N 124°30'53.90" W elev 2221 ft Streaming ||||| 100%

Eye alt 10078 ft



## Upper Cretaceous

### *Nanaimo Group*

uKN undivided sedimentary rocks

## Early Jurassic to Middle Jurassic

### *Island Plutonic Suite*

EMJlfp feldspar porphyritic intrusive rocks

EMJgd granodioritic intrusive rocks



**Lower Jurassic*****Bonanza Group***

**IJBca** calc-alkaline volcanic rocks

**Late Triassic*****Mount Hall Gabbro***

**LTrMH** gabbroic to dioritic intrusive rocks

**Middle Triassic to Upper Triassic*****Vancouver Group***

**uTrVK** **Karmutsen Formation:** basaltic volcanic rocks

**muTrVs** undivided sedimentary rocks

**Mississippian to Lower Permian*****Buttle Lake Group***

**PnPBM** **Mount Mark Formation:** limestone bioherm/reef

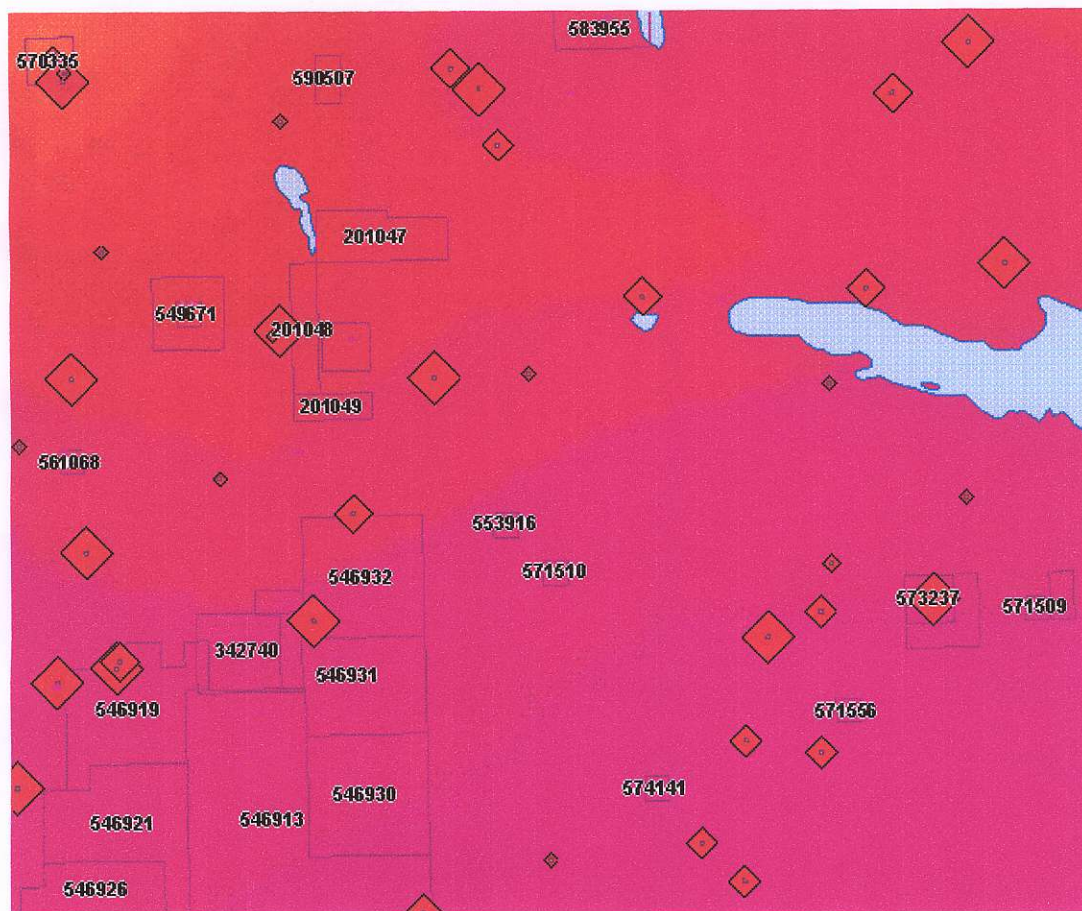
**Middle Devonian to Upper Devonian*****Sicker Group***

**uDSiN** **Nitinat Formation:** calc-alkaline volcanic rocks

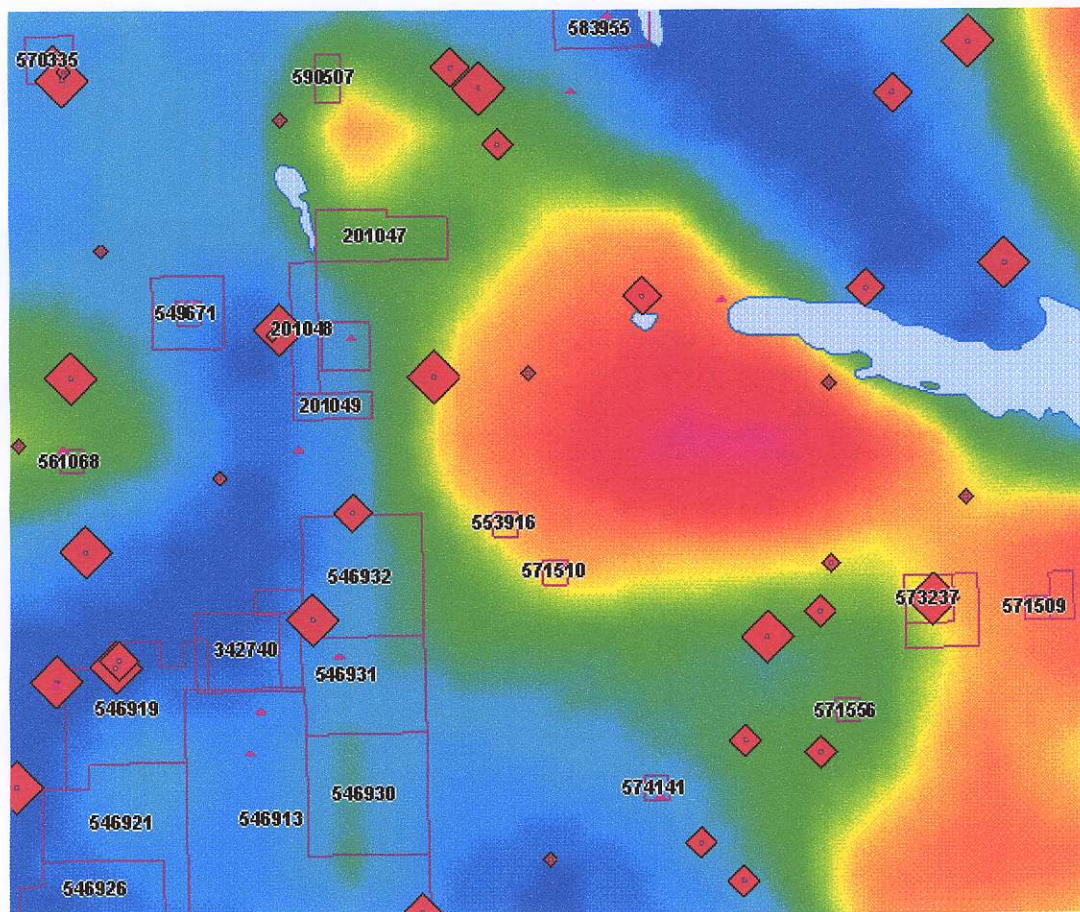
**uDSiM** **Mclaughlin Ridge Formation:** volcanoclastic rocks

**muDSiD** **Duck Lake Formation:** basaltic volcanic rocks

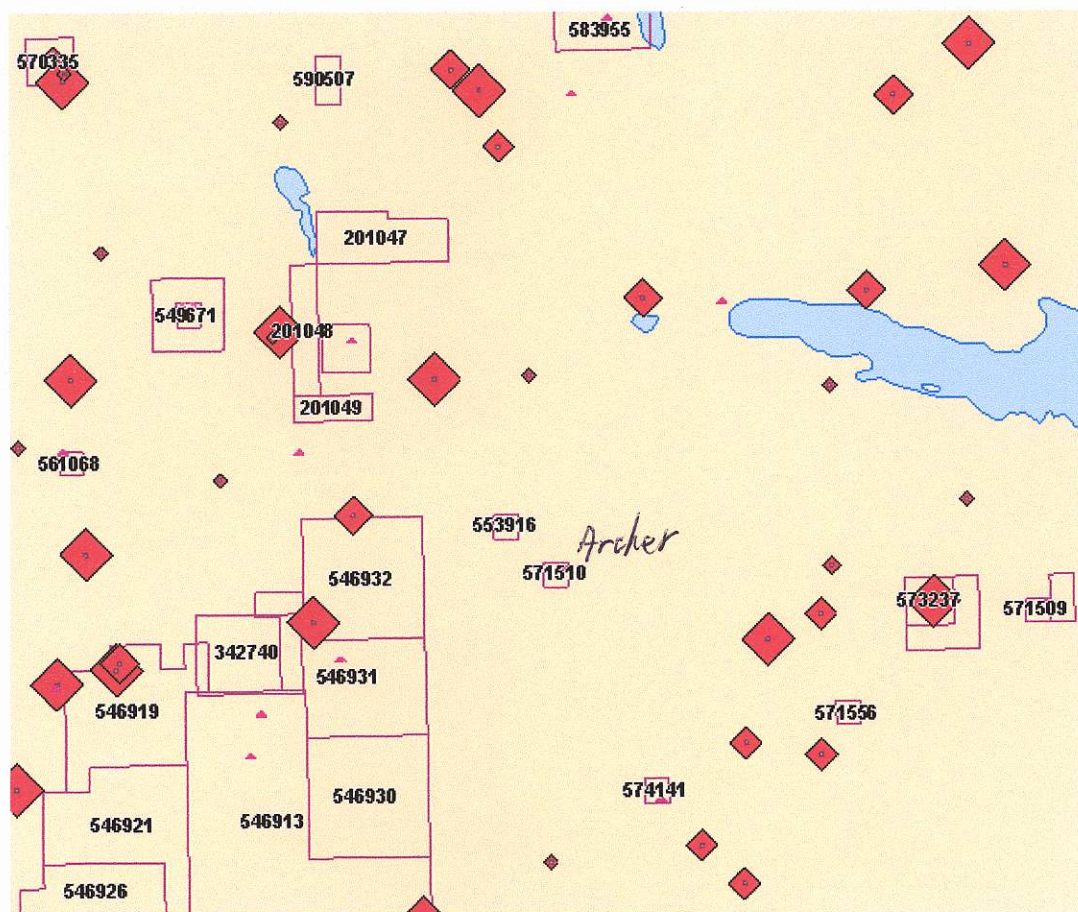
*British Columbia Ministry of Energy, Mines and Petroleum Resources  
Geological Survey*



Gravity



Aeromag is interesting



-----Original Message-----