

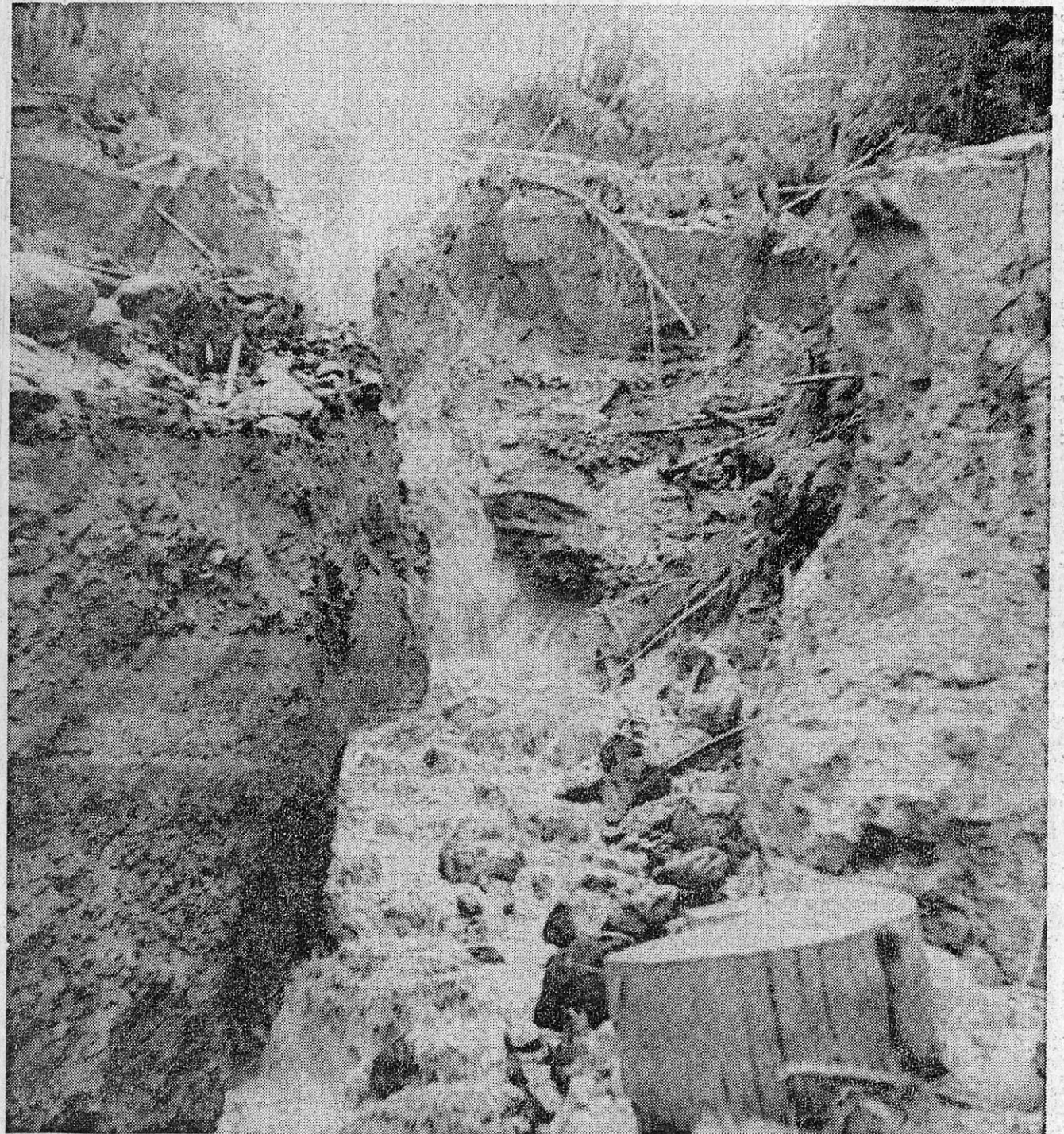
802029

Maverick River Adds to Island Mine Woe



New troubles for Cowichan Copper Co.'s mine at Jordan River came this week when river which has been surging through mine since Dec. 6 changed course,

washing away rail staging at left, three small mine locomotives, machine shop, two roads and flat-bed truck (arrow).— (Agnes Flett photos)



Gorge gouged by flood is where Jordan River now bubbles out of mountainside. Engineers and miners were trying yesterday to get water back to river bed to pre-

vent further damage. Higher up, bulldozers are digging diversion channel around original cave-in.