

The Granby Mining Company Limited
PHOENIX COPPER DIVISION
Box 490, Grand Forks, B.C.

801991

TO G. B. Hardwicke
FROM E. A. Shannon
SUBJECT SAMPLING OF EVENING STAR AND KENO CROWN GRANTS: WORK ORDER 1698

October 22, 1973

The enclosed maps indicate that copper values in the area are insufficient to warrant further work at this time.

GEOLOGICAL NOTES


The regional mapping indicates quartz diorite along the creek on the Evening Sta. However, additional work with a backhoe indicated garnet skarn, and farther north skarn is present to the north of the limestone. See map for more details.

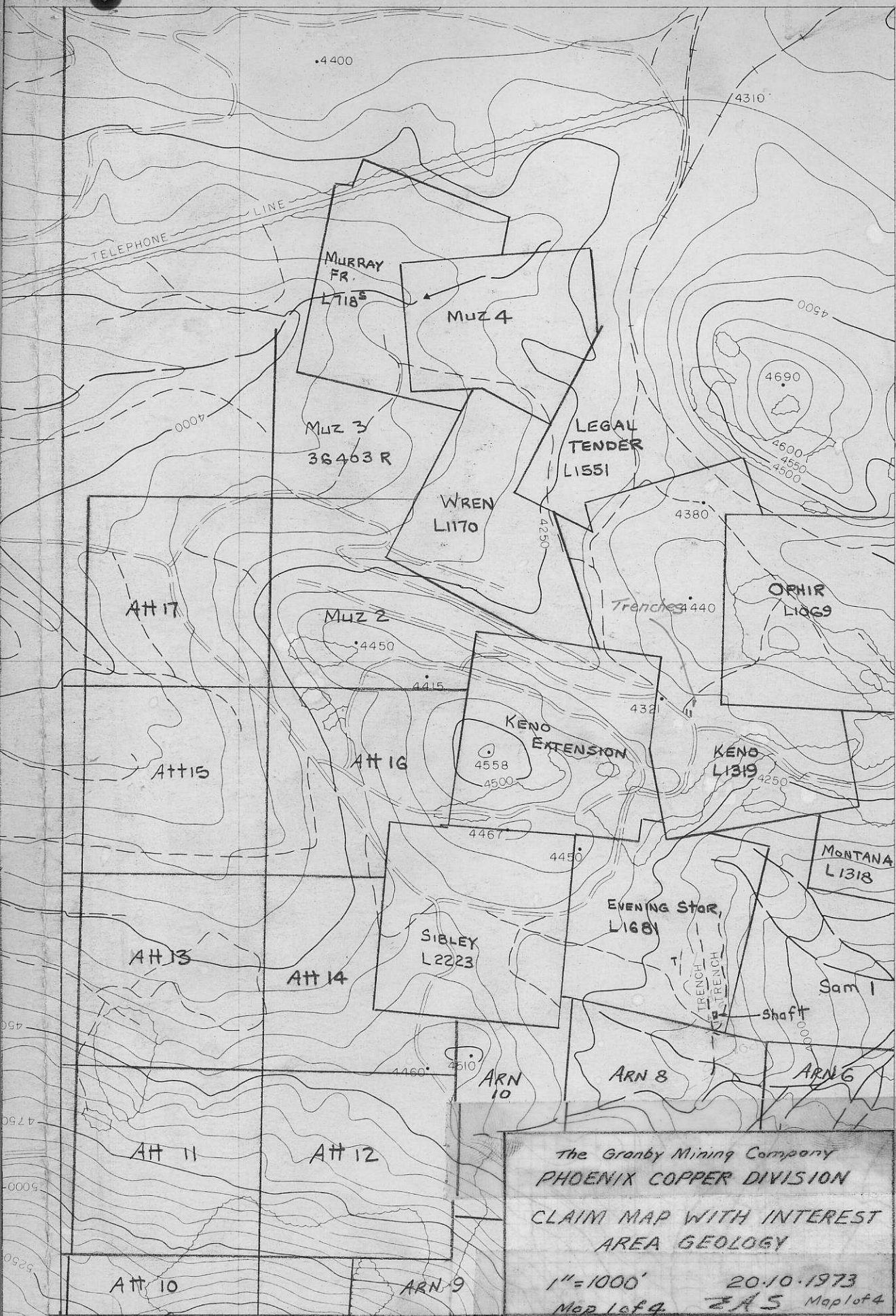
The Keno showing was apparently not mapped regionally. I have temporarily noted it as skarn. The mineralization appears to have an east west trend. Due to difficulties to properly locate the backhoe, the mineralization noted on the map could not be fully exposed to the north. The apparent flat dip may mean that this zone does not have much depth.

Rock samples taken will be given to Jim Paxton.

SAMPLING

All chip sample numbers were marked on the rock with orange paint where possible.


E. A. Shannon
Mine Engineer

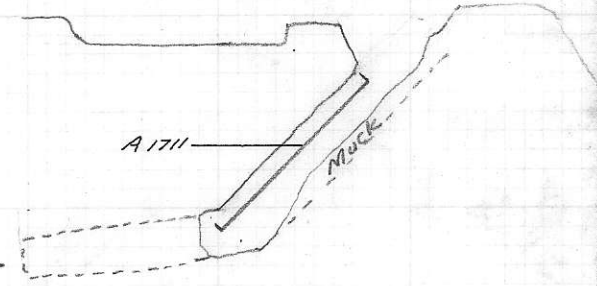


The Granby Mining Company
 PHOENIX COPPER DIVISION
 CLAIM MAP WITH INTEREST
 AREA GEOLOGY
 1"=1000' 20-10-1973
 Map 1 of 4 ZAS Map 1 of 4

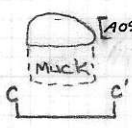
MT.
 ATTWOOD

Sample Number	Sample Length	% Cu
A0892	6.0'	0.07
A0893	5.0'	0.40
A0894	7.0'	0.17
A0895	3.5'	0.15
A0896	3.0'	0.45
A0897	3.0'	0.07
A0898	1.5'	0.10
A0899	2.5'	0.07
A0900	2.5'	0.15
A1711	21.5'	0.20

Decline at approx. 7°. Last 20 feet inaccessible

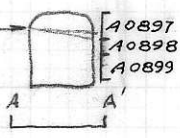


S-N Section



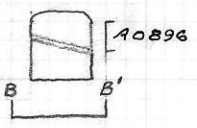
partially leached with Malachite stain. May be partially crushed.

Schist



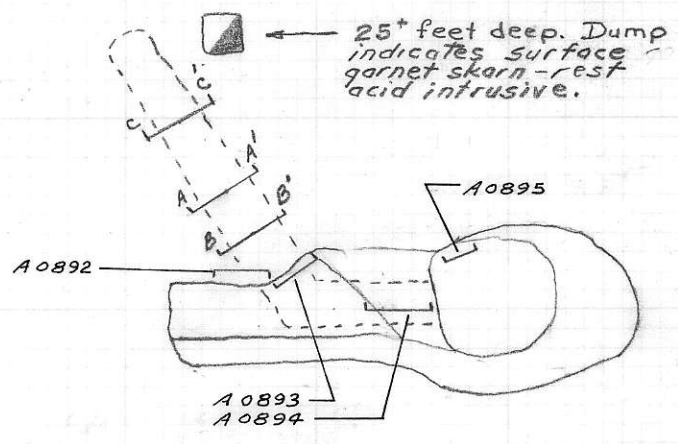
Sg
gd
gd to oxide

Schist



Sg
gd

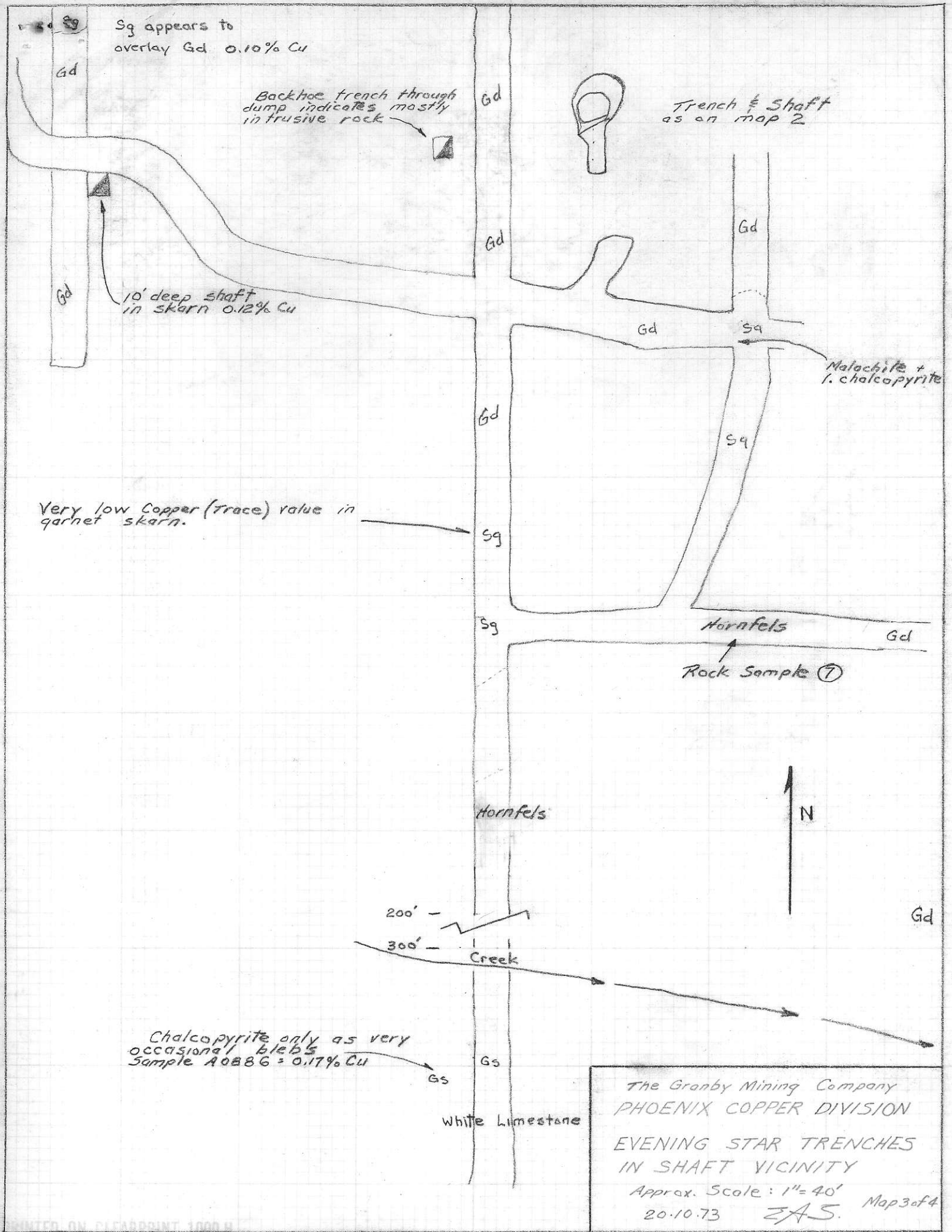
Schist zone contains chalcopryrite and pyrite



Z

- Sg Garnet Skarn
- Gd Acid Intrusive

The Granby Mining Company
 PHOENIX COPPER DIVISION
 EVENING STAR WORKINGS
 1" = 20' approx. 20-10-73
 EAS Map 2 of 4



Sg appears to overlay Gd 0.10% Cu

Backhoe trench through dump indicates mostly intrusive rock

Trench & Shaft as on map 2

10' deep shaft in skarn 0.12% Cu

Malachite + i. chalcopyrite

Very low Copper (Trace) value in garnet skarn.

Hornfels

Rock Sample ①

Hornfels

200'

300'

Creek

Chalcopyrite only as very occasional blebs
Sample AOB86 = 0.17% Cu

White Limestone

The Granby Mining Company
PHOENIX COPPER DIVISION
EVENING STAR TRENCHES
IN SHAFT VICINITY

Approx. Scale: 1" = 40'
20.10.73 EAS. Map 3 of 4

Measuring South to North in the west trench

Rock Sample Number	Distance	
1	44'	Amphibolite
2	37'	Amphibolite (serpentinous)
3	28'	Fine breccia with chrysotile
4	21'	Tuff
5	10'	Chert
6	55'	Mainly pyrrhotite with pyrite and chalcopyrite

Dotted line indicates approximate limit of clearing

