

Released July 19/68

By Mr. Felkio

Cliff Douglas

Hunter

---

GRANBY

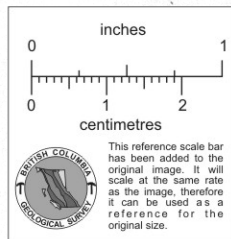
LINE GRID 1

801959

INDUCED POLARIZATION SURVEY

GRANBY MINING COMPANY LIMITED

GREENWOOD - B. C.



LOCATION MAP  
SCALE : 1 INCH = 1 MILE.

To accompany report by

W. A. Finney, B.Sc., Geophysicist.

HUNTEC LIMITED, Vancouver, Canada - May, June 1968.

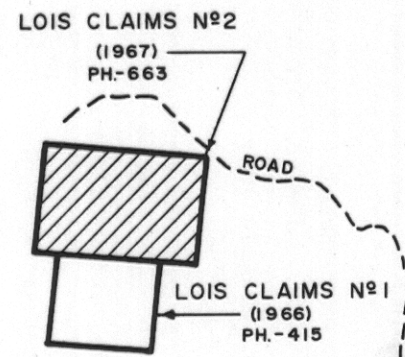
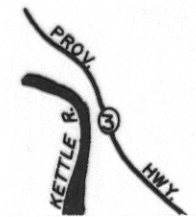
NOTE:



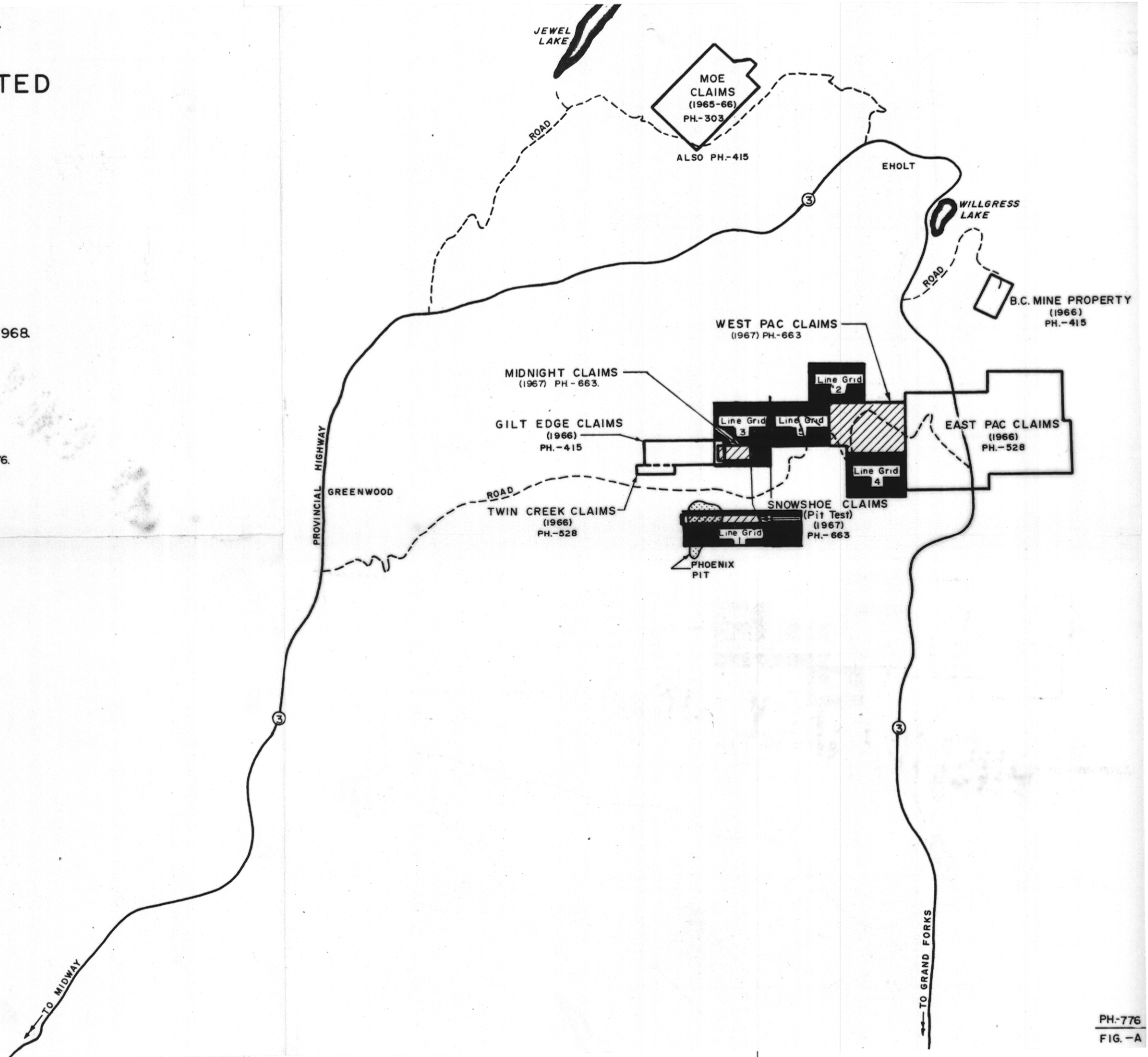
Claims Covered in PH-776.  
1968 I.P. Survey Report.

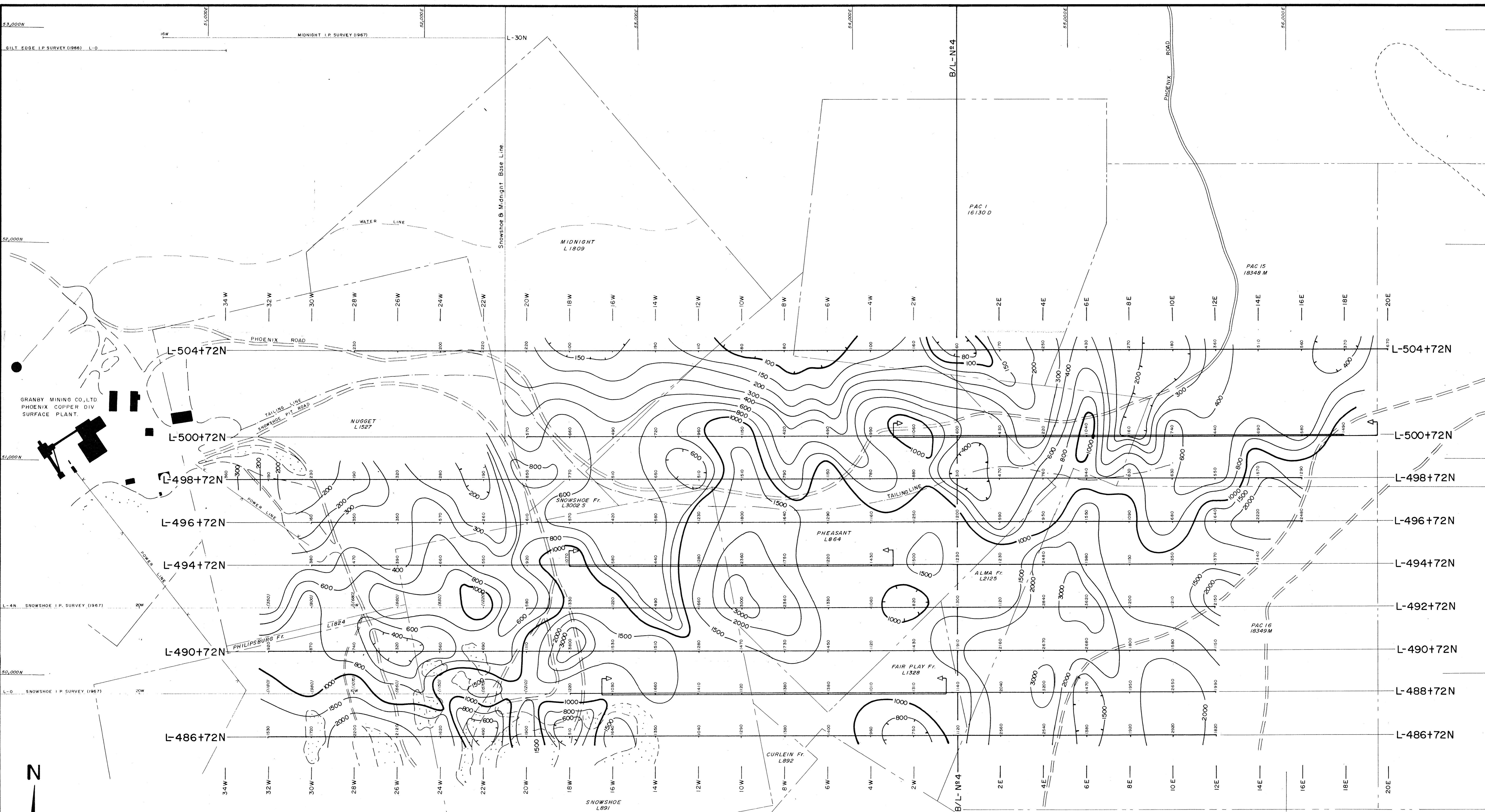
**PRELIMINARY ONLY**

N



TO MIDWAY



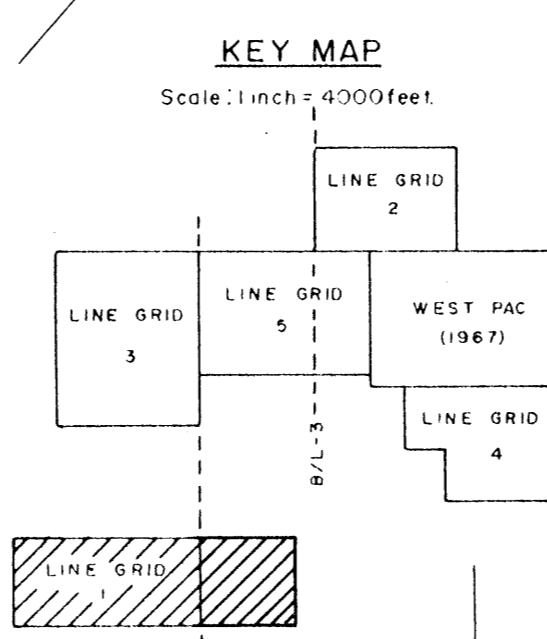
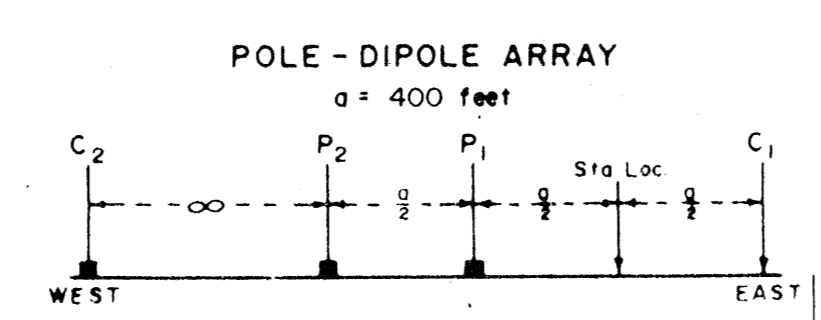


GRANBY MINING CO., LTD  
PHOENIX COPPER DIV  
SURFACE PLANT.

**LEGEND**

Portion of Line Covered by Detail Surveying.

Open Pits & Cutaways  
eg. (1500) 1967 I.P. Survey Values.



**PRELIMINARY ONLY**

THE GRANBY MINING COMPANY LIMITED  
LINE GRID 1.  
GREENWOOD M.D. - B.C.

INDUCED POLARIZATION SURVEY.  
APPARENT RESISTIVITY CONTOURS  
Contours at logarithmic intervals: 150, 200, 300, 400, 600, 800, 1000 etc.,  
ohm - meters.

To accompany report by:  
W. A. Finney, B.Sc., Geophysicist

HUNTEC LIMITED. VANCOUVER-CANADA.

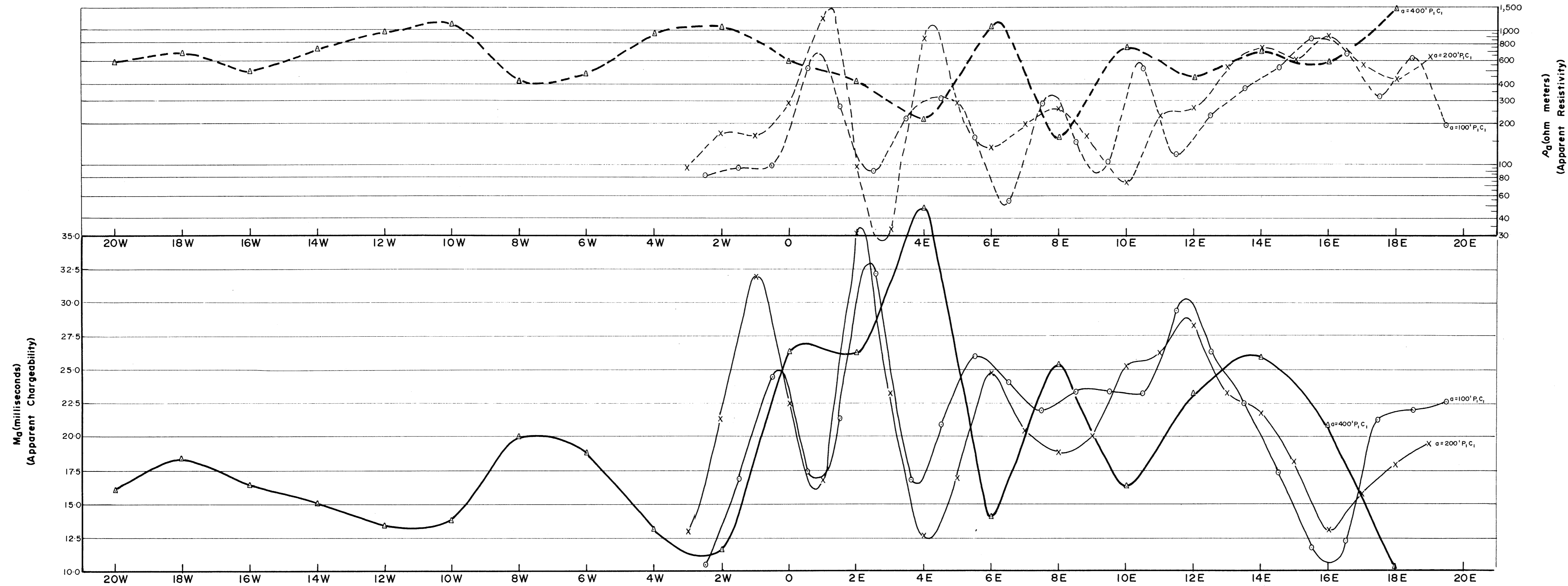
SCALE: 1 inch = 200 feet.

DRAWN: E. H.

DATE: JUNE, 1968.

JOB NO. PH. 776.

DWG. NO. -



INDUCED POLARIZATION SURVEY.  
 DETAIL PROFILE: LINE -500+72N.

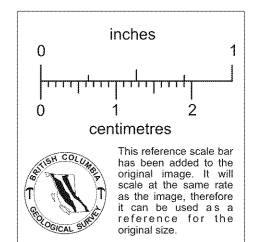
LEGEND

- INTERPRETED CAUSATIVE BODY
- RECOMMENDED D.D. HOLE

**PRELIMINARY ONLY**

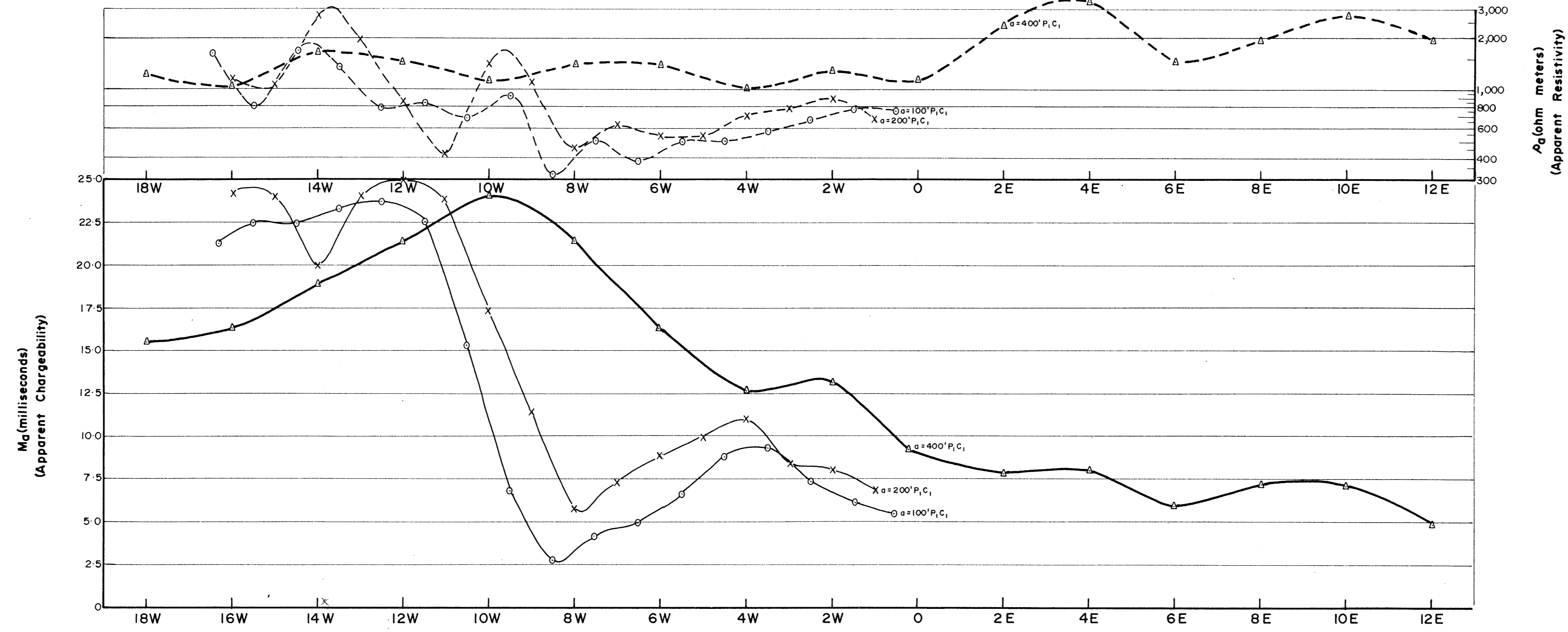
THE GRANBY MINING COMPANY LIMITED.  
 LINE GRID I  
 GREENWOOD M.D. - B.C.

Horizontal Scale: 1 inch = 200 feet.  
 Vertical Scales:  
 Chargeability - 1 inch = 5.0 milliseconds.  
 Resistivity - 2 inches = 1 logarithmic cycle (ohm-meters)



To accompany report by:  
 W. A. Finney, B.Sc., Geophysicist.

HUNTEC LIMITED - Vancouver, Canada - June, 1968.



INDUCED POLARIZATION SURVEY  
 DETAIL PROFILE: LINE -488+72N

**LEGEND**

▭ INTERPRETED CAUSATIVE BODY.

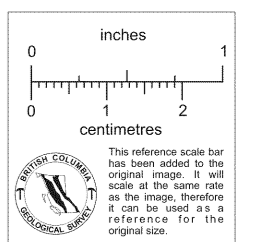
○ RECOMMENDED D.D. HOLE.

**PRELIMINARY ONLY**

THE GRANBY MINING COMPANY LIMITED.  
 LINE GRID I  
 GREENWOOD M.D. - B.C.

Horizontal Scale: 1 inch = 200 feet.

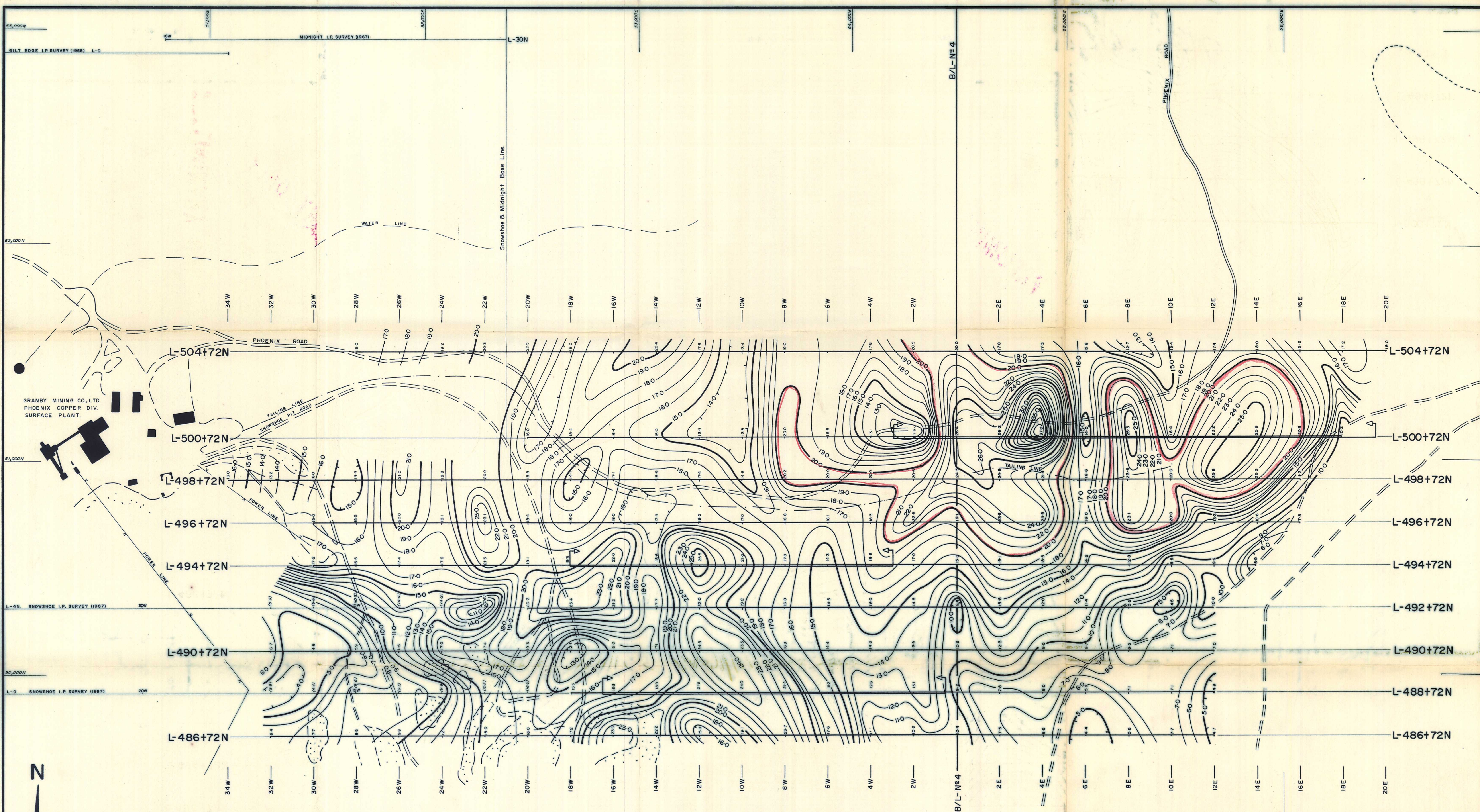
Vertical Scales:  
 Chargeability - 1 inch = 5.0 milliseconds.  
 Resistivity - 2 inches = 1 logarithmic cycle (ohm-meters)



To accompany report by:  
 W.A. Finney, B.Sc., Geophysicist.

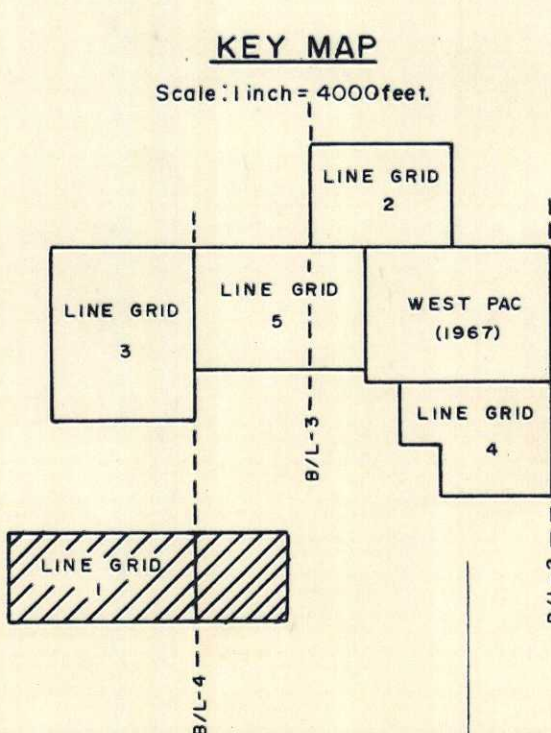
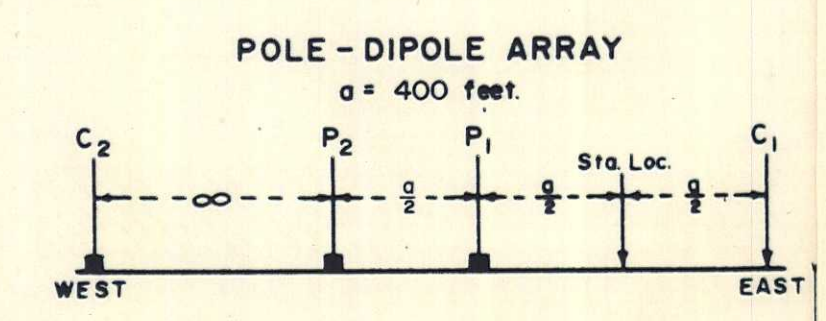
HUNTEC LIMITED - Vancouver, Canada - June, 1968.

DWG. N° - 776-



**LEGEND**

Portion of Line Covered by Detail Surveying.  
 Open Pits & Cutaways.  
 eg. (3.5) 1967 I.P. Survey Values.



**PRELIMINARY ONLY**

THE GRANBY MINING COMPANY LIMITED.  
 LINE GRID 1,  
 GREENWOOD M.D. - B.C.

INDUCED POLARIZATION SURVEY.  
 APPARENT CHARGEABILITY CONTOURS  
 WITH INTERPRETATION.  
 CONTOUR INTERVAL = 1.0 milliseconds.

To accompany report by:  
 W. A. Finney, B.Sc., Geophysicist

HUNTEC LIMITED. VANCOUVER-CANADA.

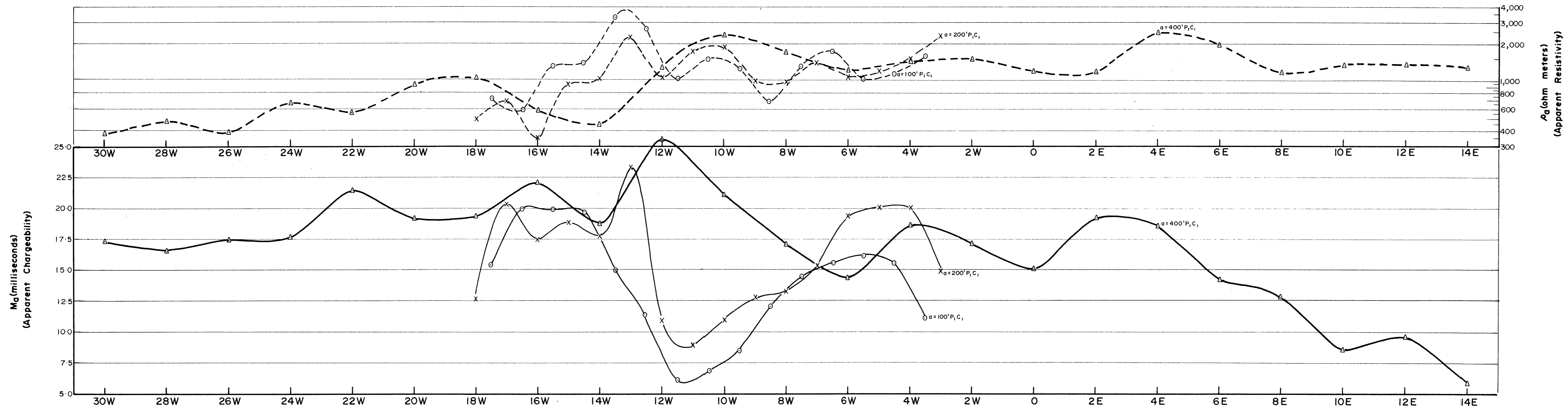
SCALE: 1 inch = 200 feet.

DRAWN: E.H.

DATE: JUNE, 1968.

JOB # P.H. 776.

DWG. N# -



INDUCED POLARIZATION SURVEY.  
 DETAIL PROFILE: LINE -494+72N.

LEGEND

-  INTERPRETED CAUSATIVE BODY.
-  RECOMMENDED D.D. HOLE.

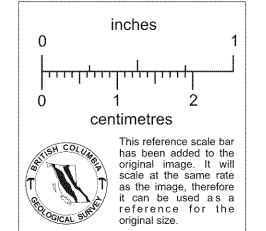
**PRELIMINARY ONLY**

THE GRANBY MINING COMPANY LIMITED.

LINE GRID I  
 GREENWOOD M.D. - B.C.

Horizontal Scale: 1 inch = 200 feet.

Vertical Scales:  
 Chargeability - 1 inch = 5.0 milliseconds.  
 Resistivity - 2 inches = 1 logarithmic cycle (ohm-meters)



To accompany report by:  
 W.A. Finney, B.Sc., Geophysicist.

HUNTEC LIMITED - Vancouver, Canada - June, 1968.

DWG. N° - 776-