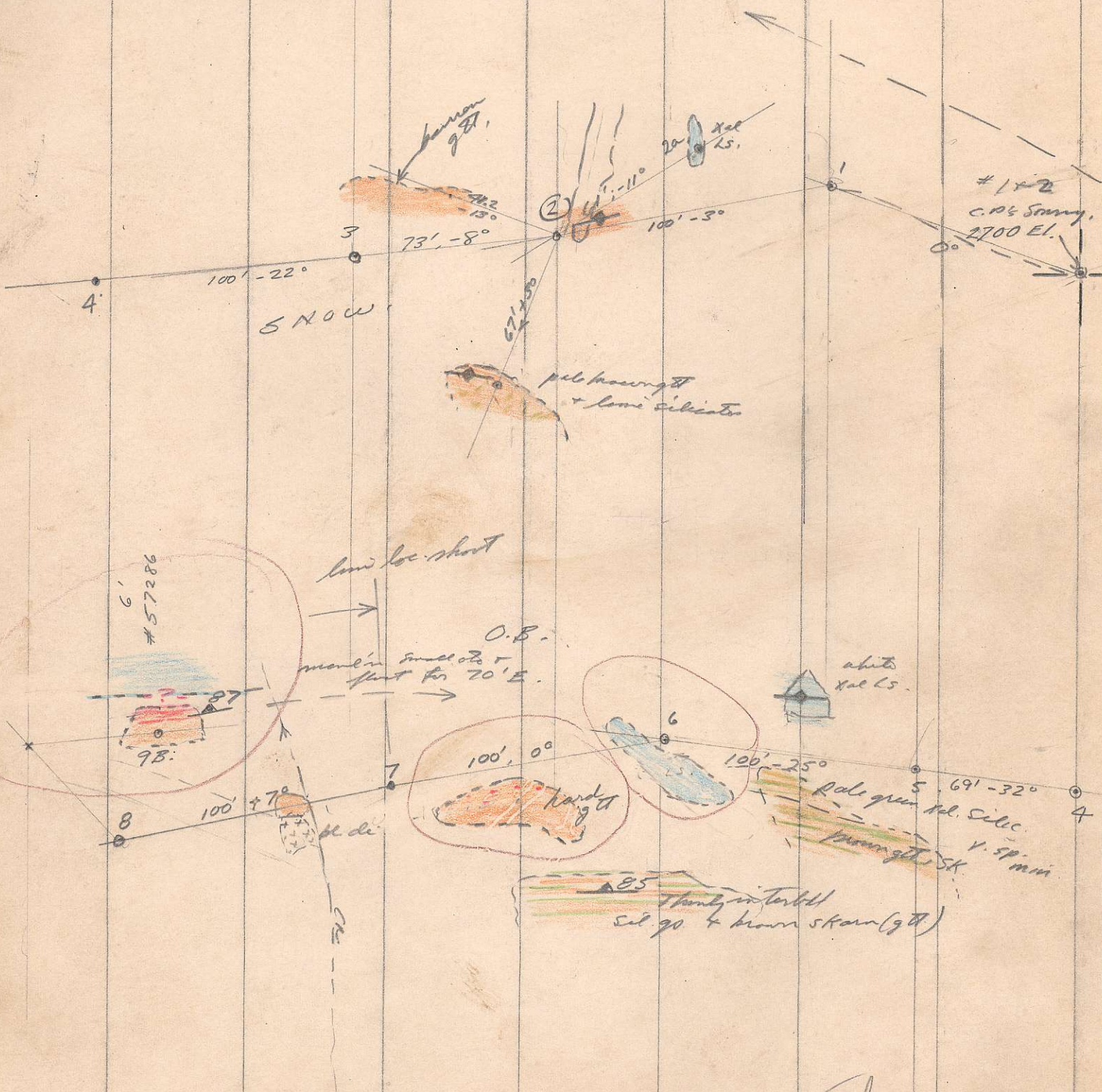


N85E 48' 0"

580W, -30



Plotted

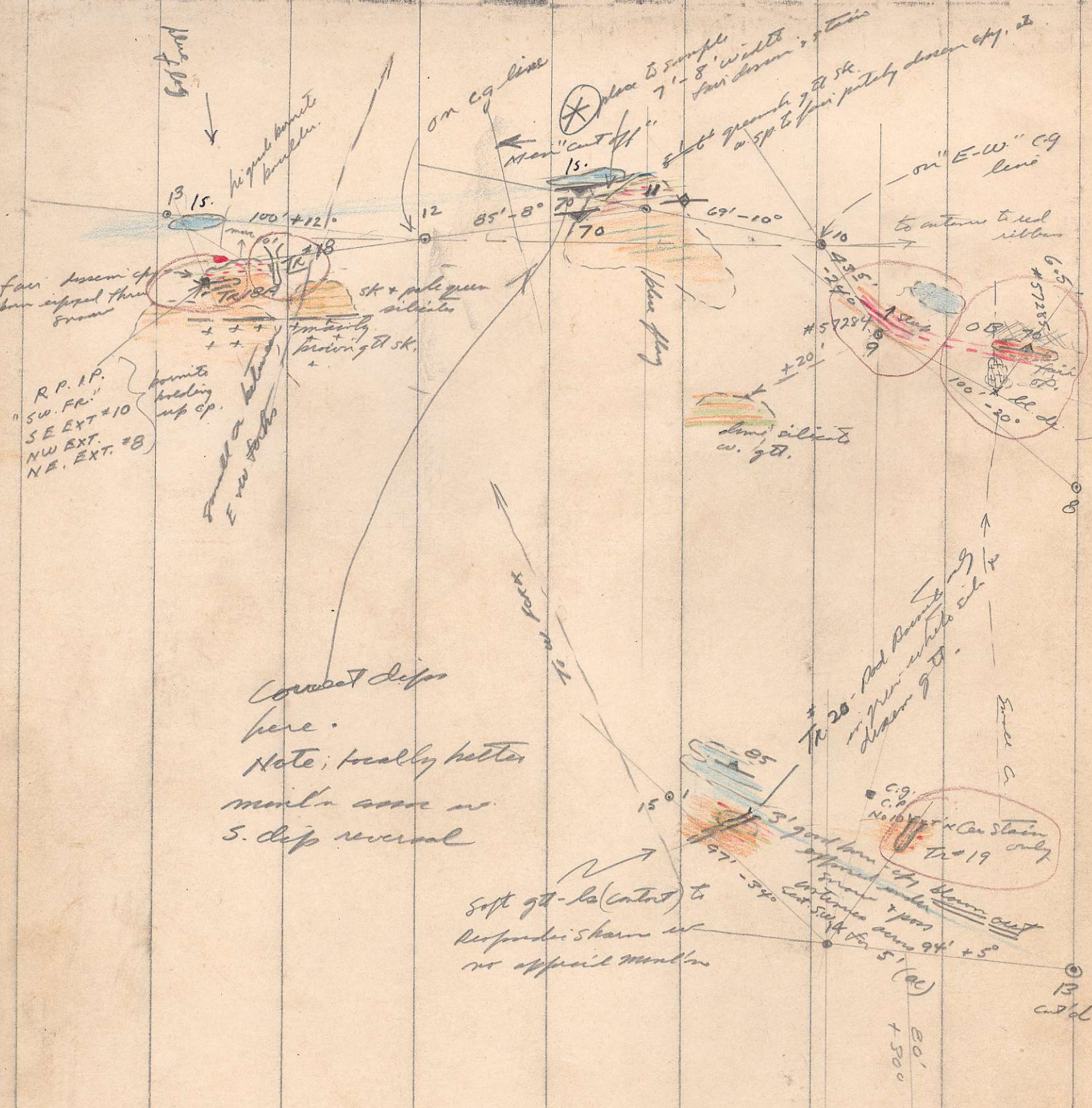
May 23/64

Central Zeb.

Silver Standard, W. End; 1" = 50'

801627

(1)



Correct dip here.
 Note: locally better mudstone occurs w. S. dip reversal

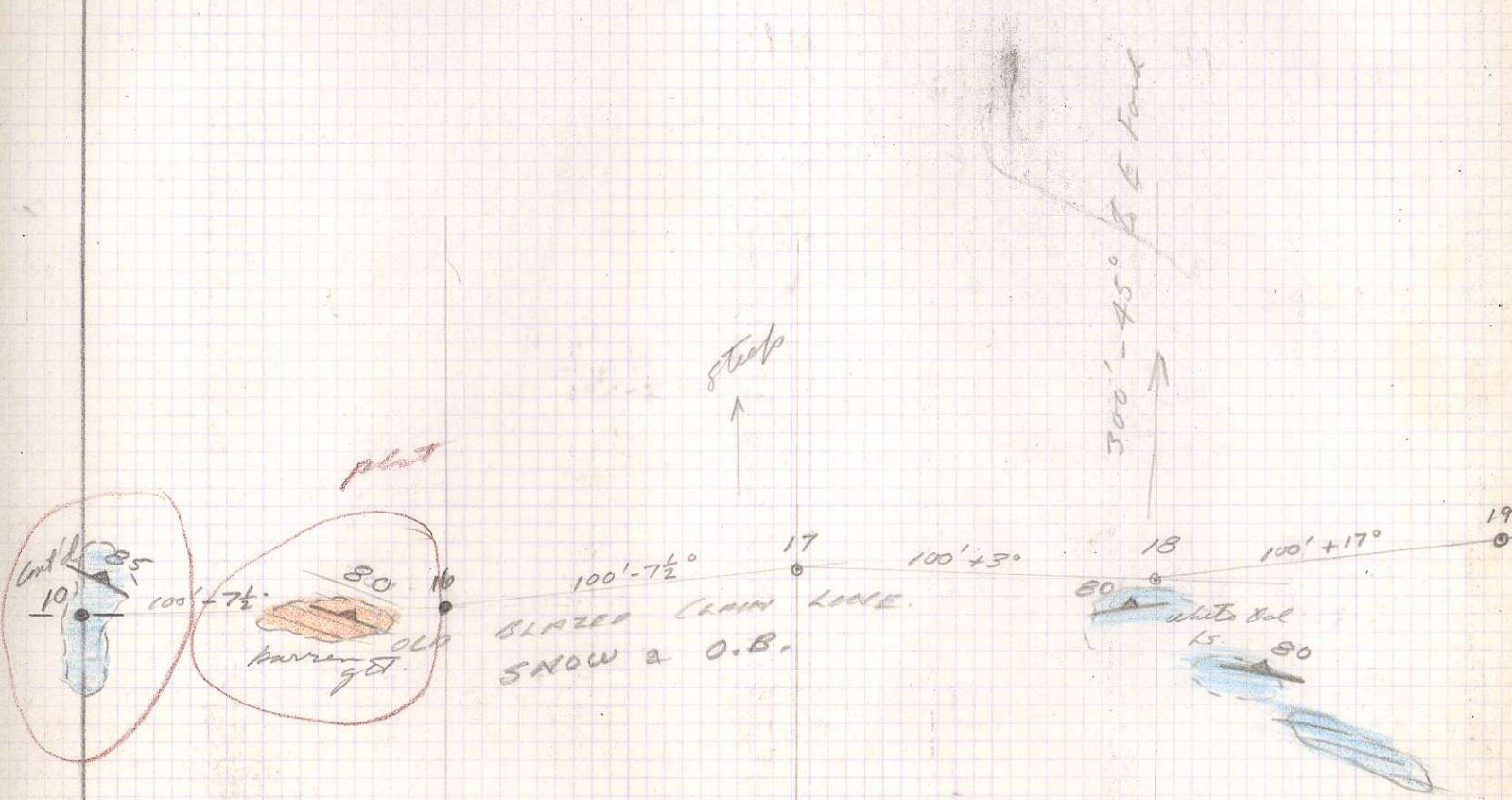
Soft gt-ls (contact) to Responder's shales w. no apparent mudstone

Bluff low set - anastom.

plotted

Silver Strand May 28/64

1" = 50' (2)



plot

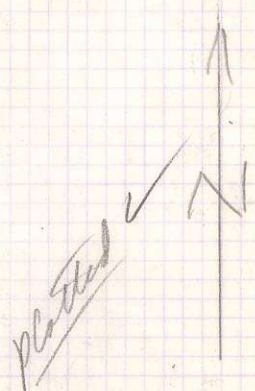
steep

300' - 45° S E Trend

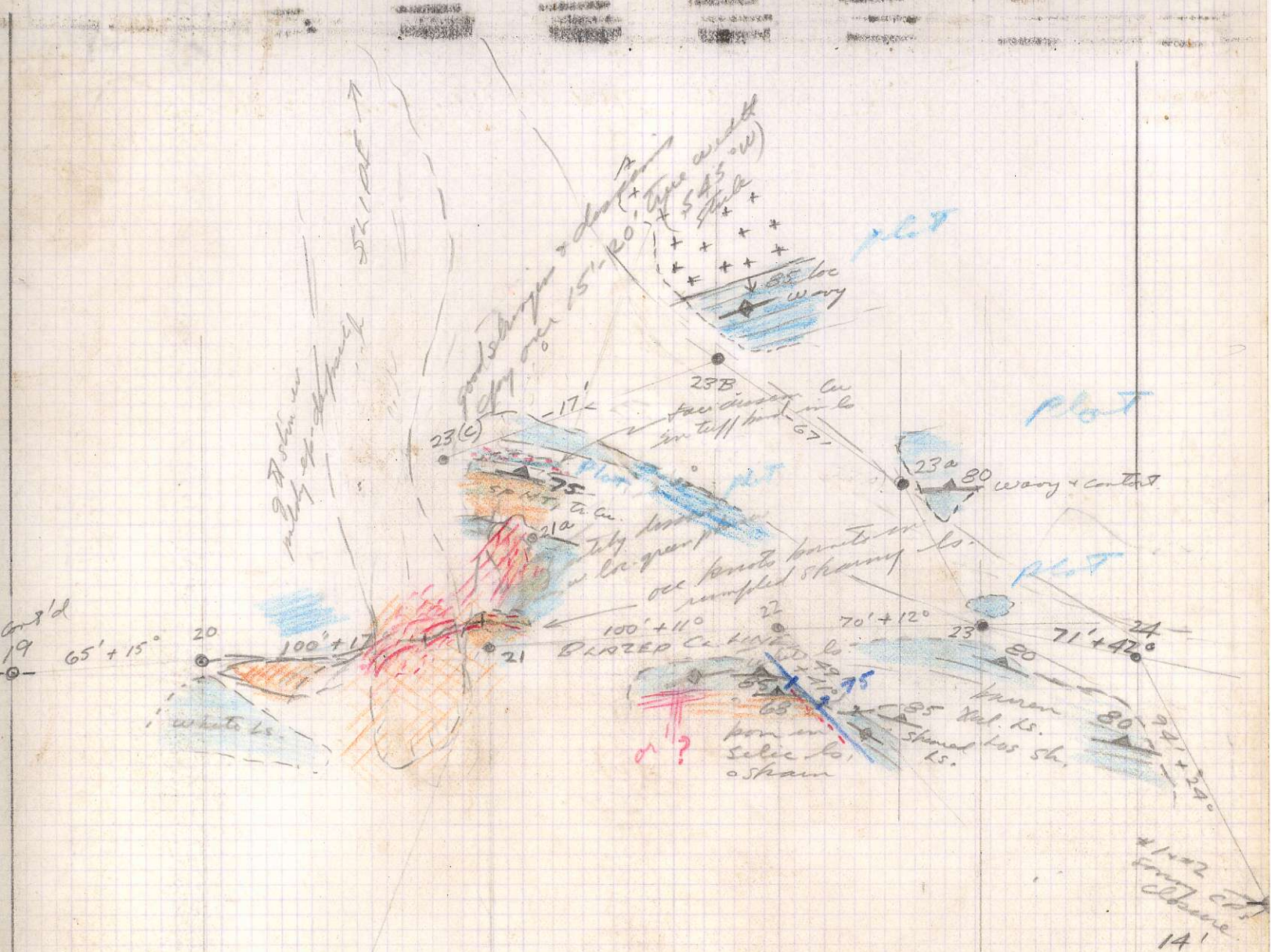
GLAZED CHAIN LINE.
SNOW & O.B.

white hole
15 80

f gr

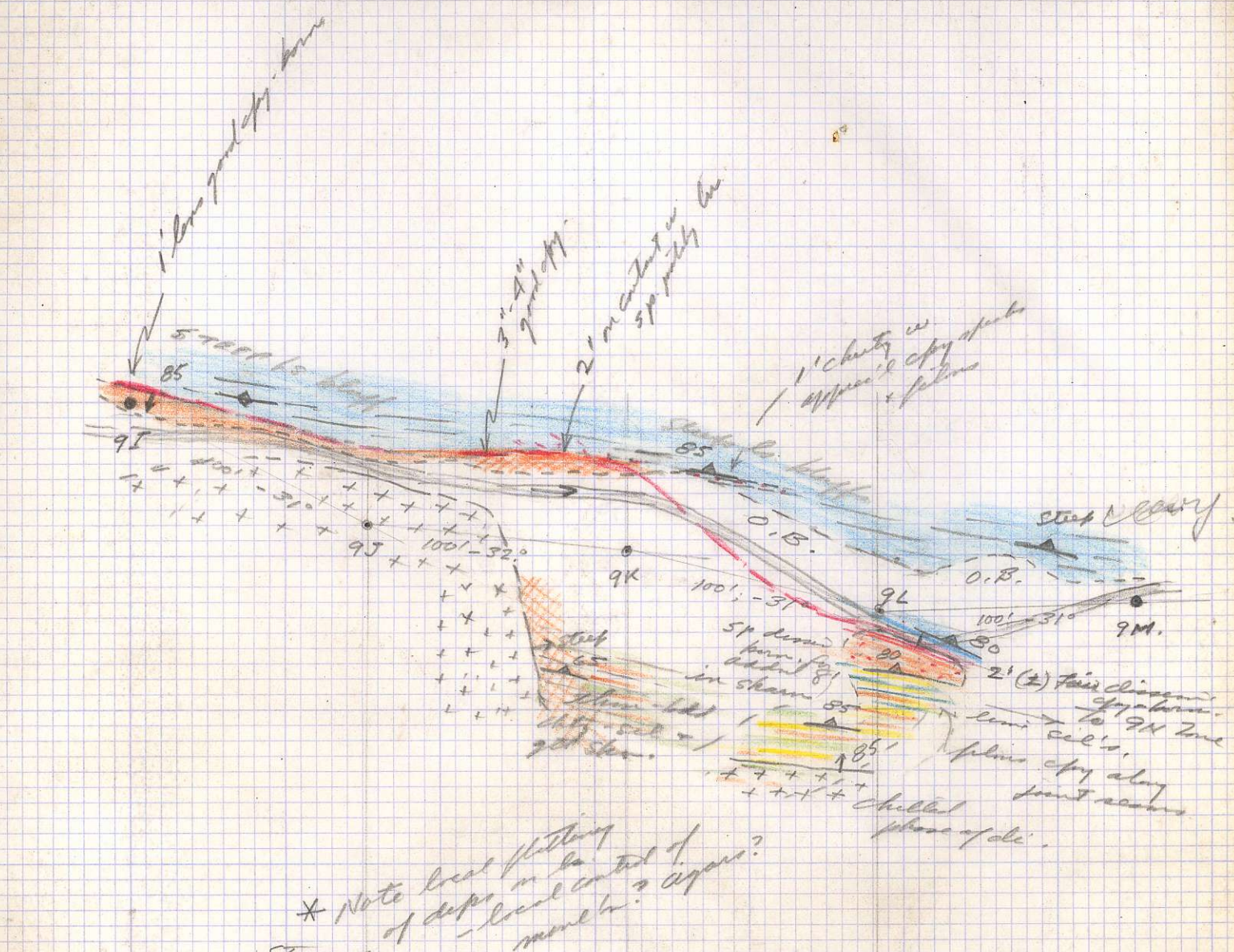


1" = 50'
 Silver Stantard
 Zeballos 5/24/64 (3)

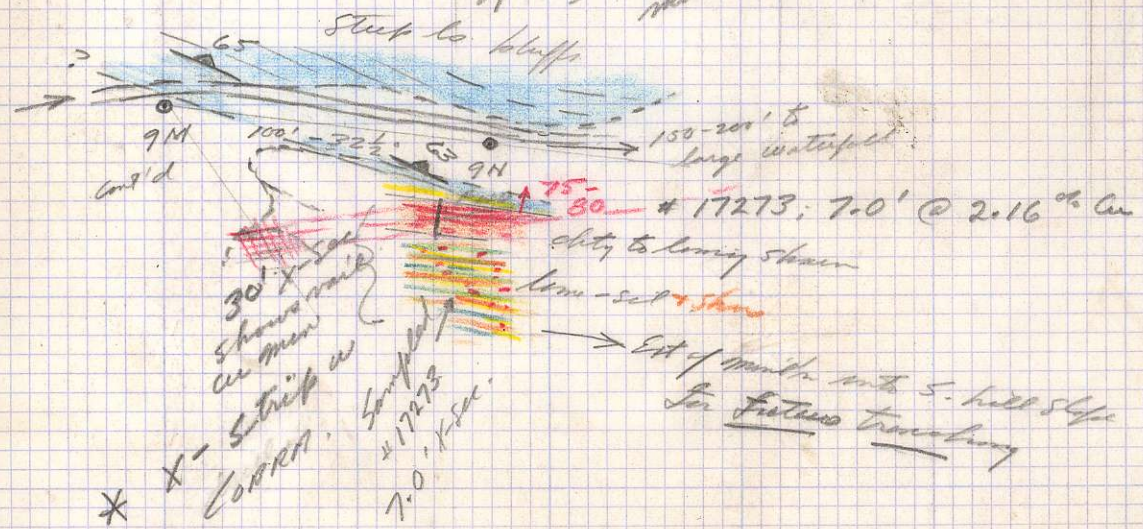


13	14	15	16	17	18	19	20
$\frac{13}{2}$	$\frac{14}{2}$	$\frac{15}{2}$	$\frac{16}{2}$	$\frac{17}{2}$	$\frac{18}{2}$	$\frac{19}{2}$	$\frac{20}{2}$
9.1	9.8	10.5	11.2	11.9	12.6	13.3	14.1

6-13-
 Plotted
 5/24/64
 Silver Standard
 Zepherus
 1" = 50'

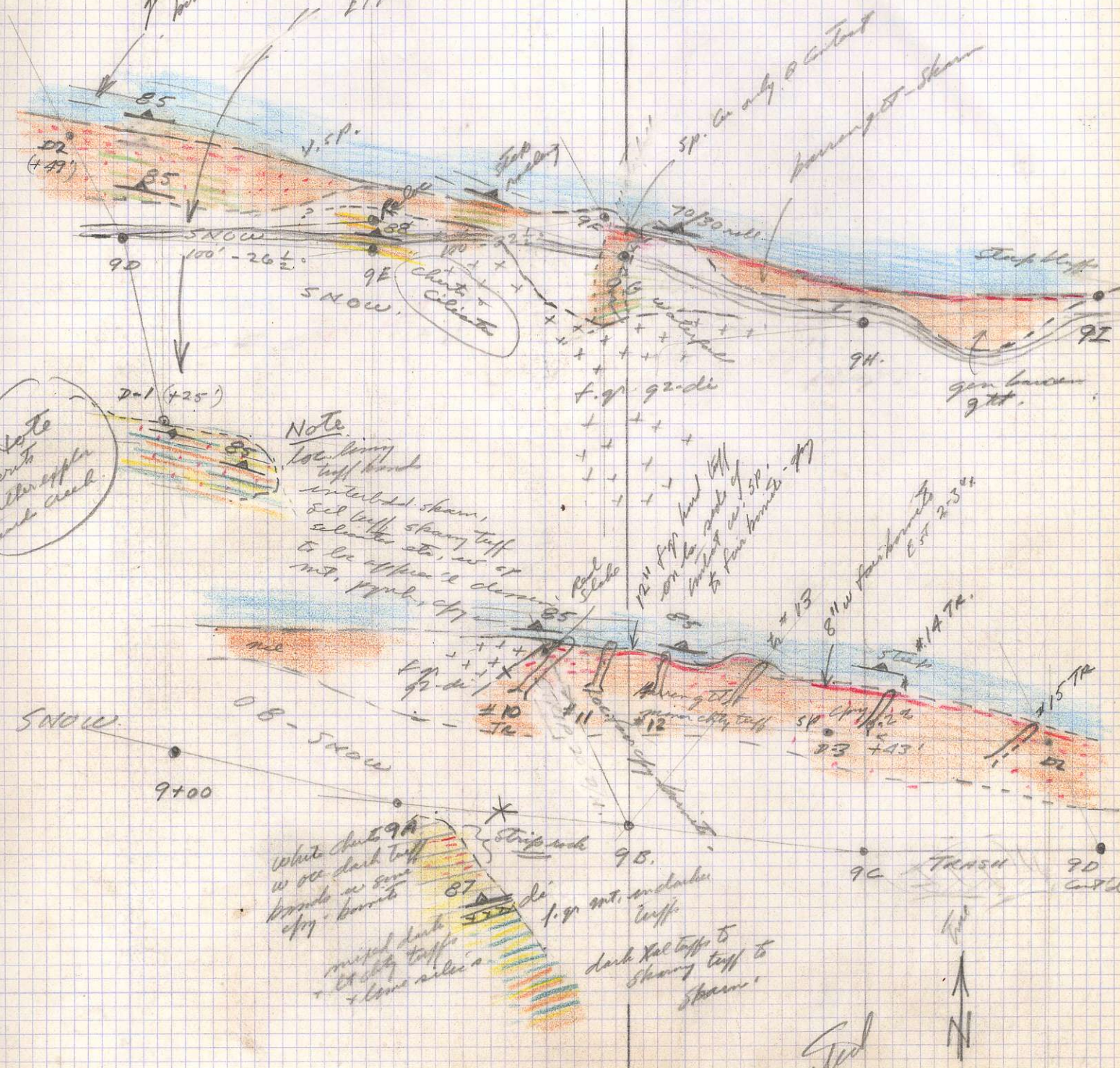


* Note local flattening of dips in the east of member? dipens?



plotted
 SILVER STAR
 CENTR. - 280 - JERRY
 1" = 50'
 5/25/64

7px 5px (ex. fine)
 berrite for 6' x-sec fossils.
 Loc. MOST PROSPECTING ZONE SOUTH OF IT
 EITHER UNDER CREEK OR TO (INDIC. DIA DRILL)



Note
Mount
further up
small creek.

Note
Loc. being
tuff bands
interbed. shams,
8' tuff shaly tuff
silicea etc, as of
to be upper 2' down
mt. 1px, etc

White chert 9A
w. occ. dark tuff
bands as seen
of 1px berrite

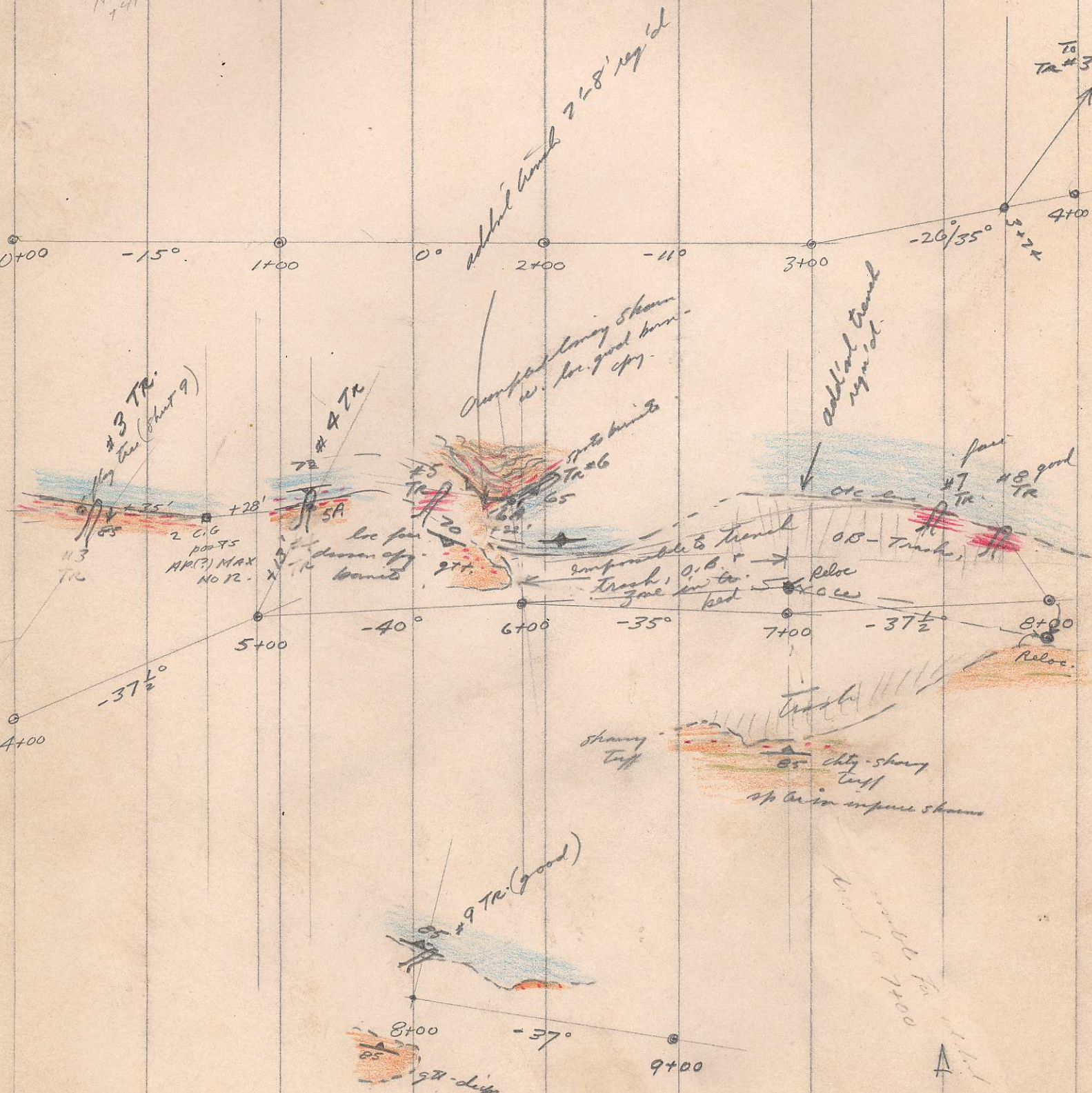
mixed dark
shaly tuff
+ some silicea

dark Xal tuff to
shaly tuff to
shams

plotted

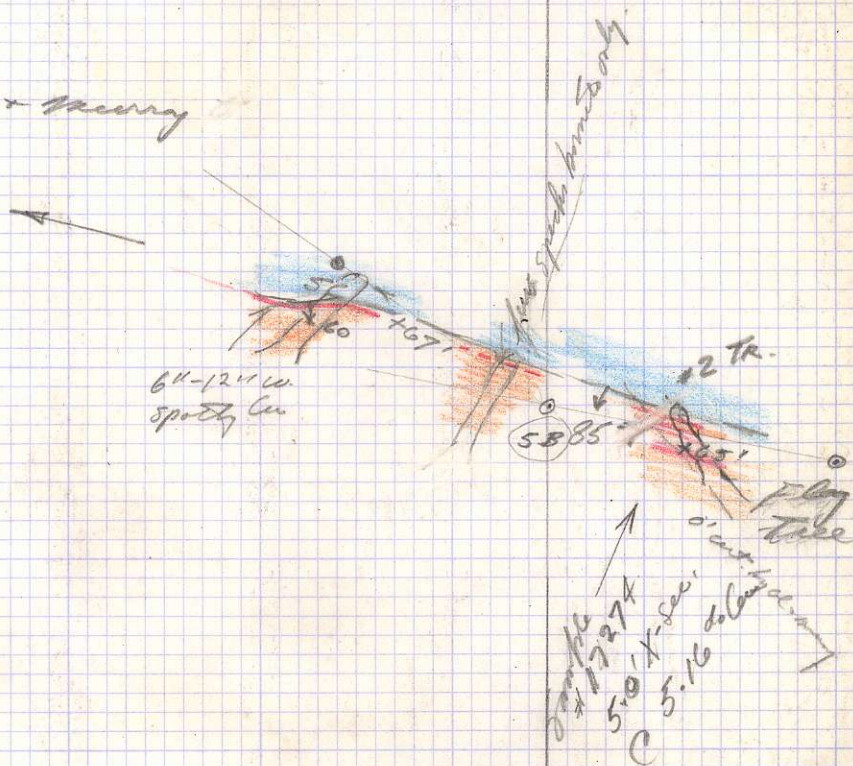
Silver Standard
Rebollar
1" = 50'
5/25/64
6/17/64

N 78 W
+ 41



Plotted
 SILVER STAR
 280000
 5/26/64
 14-50
 (B)

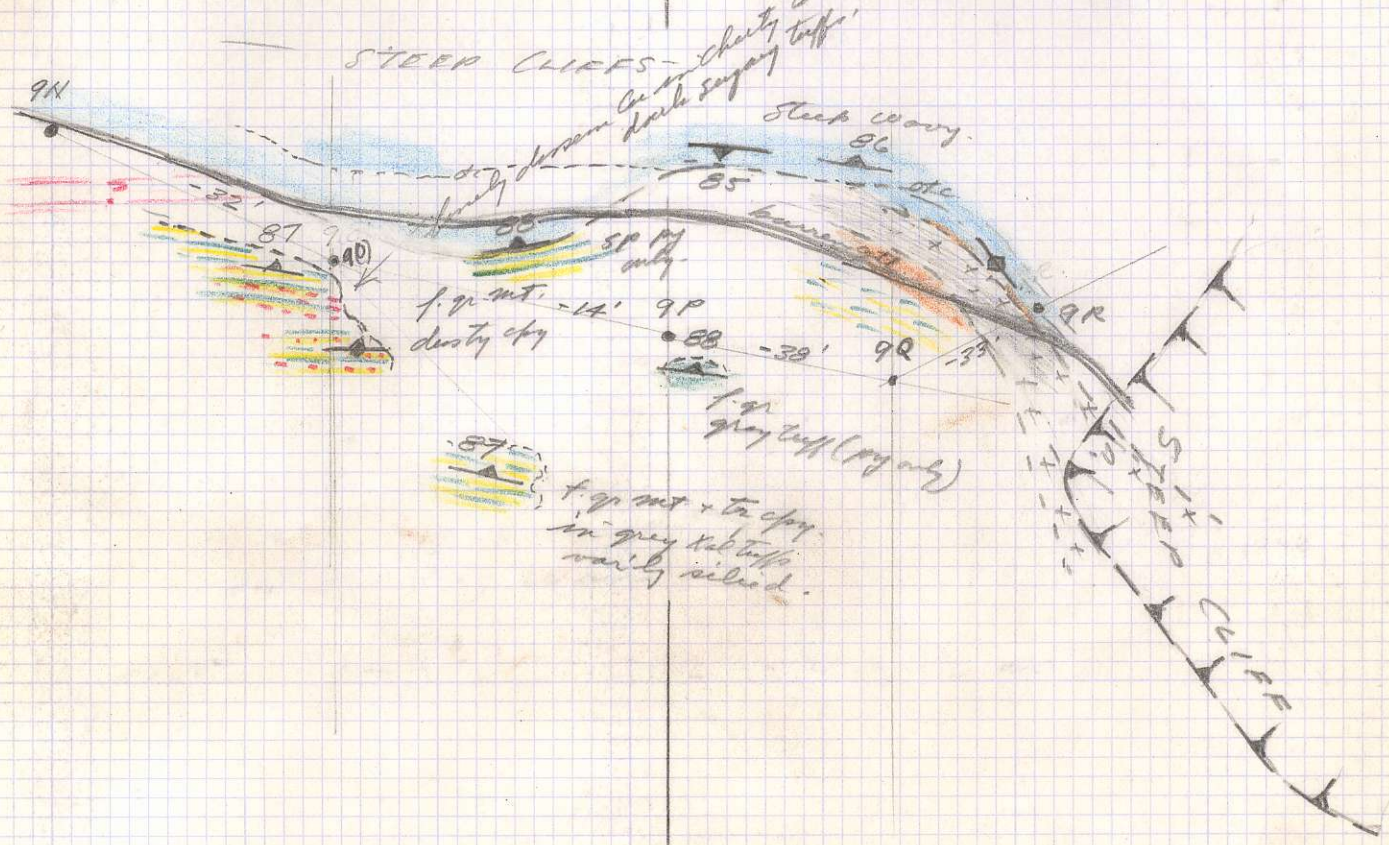
slipping by al + mercury



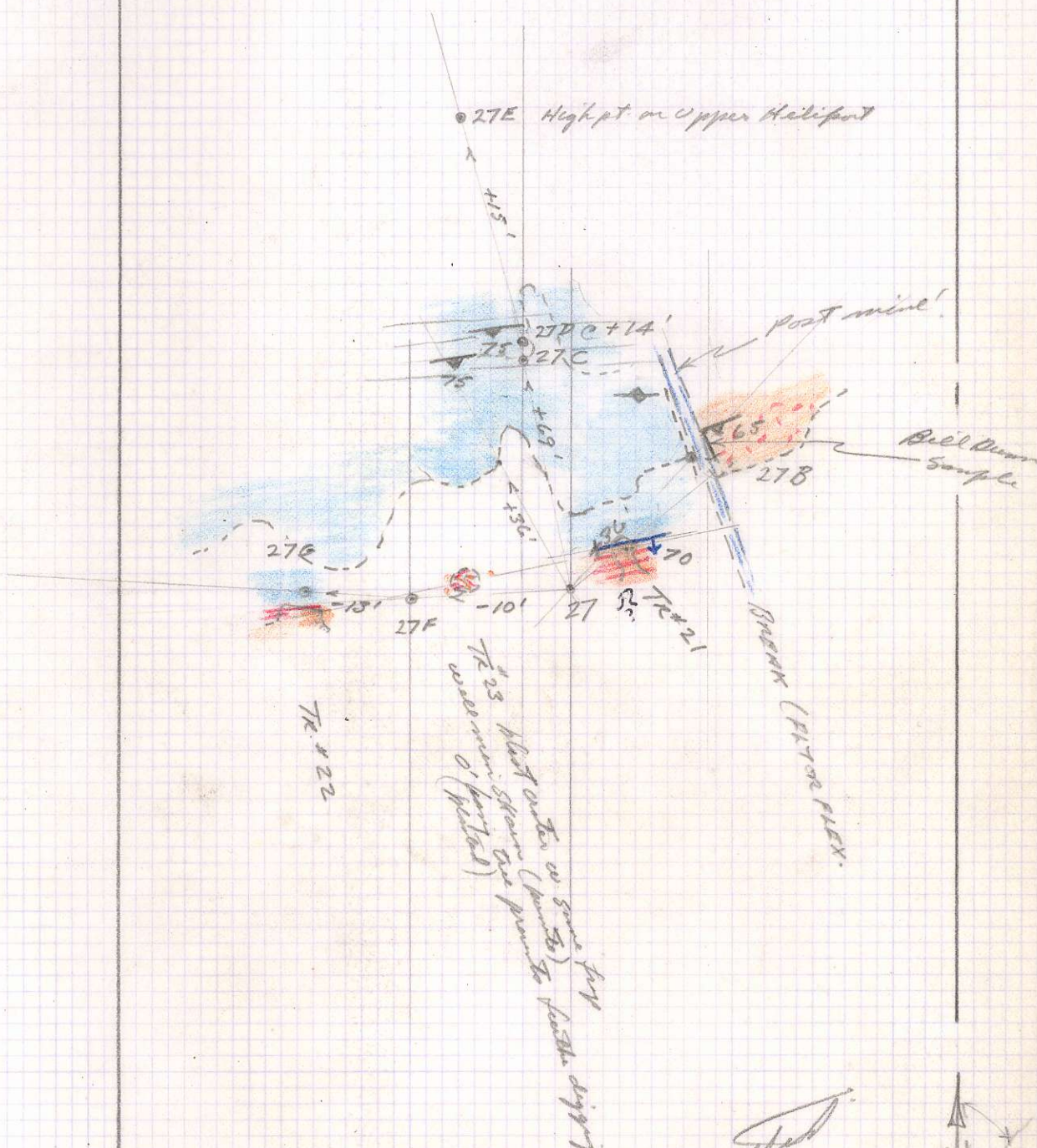
Plotted

Silver Standard
Zephyrus
5/26/64
140 50' (9)

9 N - O 565E, 88' - 22°
 O - P 578E; 91' - 90°
 P - Q 579E 71' - 33°
 Q - R N64E 53' - 38°

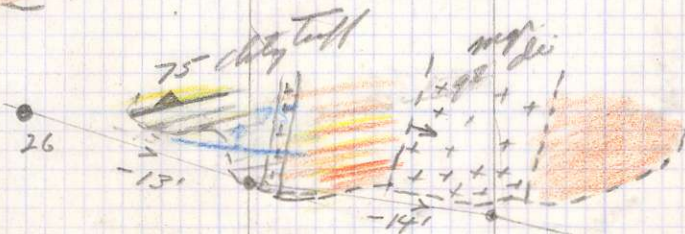


Silver Standard
 Tuberos
 1" = 50'
 June 12/64



M. J. [Signature]
 SILVER STANDARD
 ZEBALLOS,
 1" = 50', July 3/64 (14)

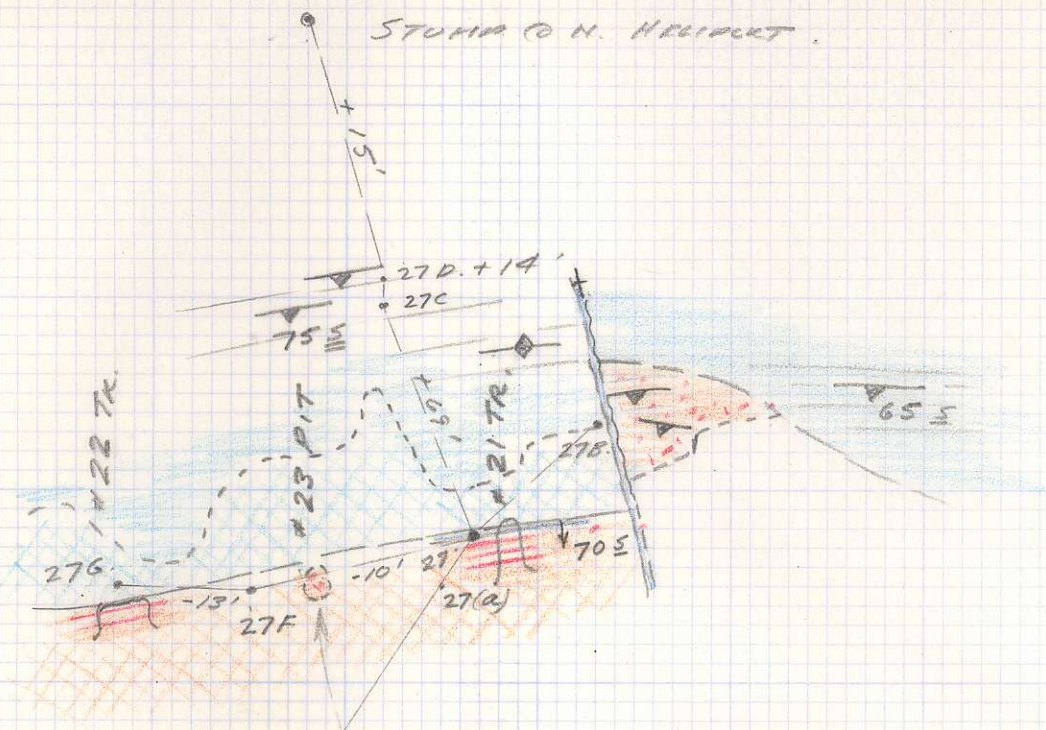
hardness
9th



plotted

photo

SILVER STANO
ZEMULOS
1" = 50'
July 3/68 (15)



9/25
 1 P.
 11-2
 SONNY

23 Pit is unexploded blast -
 hole in dirt w. signs of well.
 man shown showing - last
 of blasting caps present further
 blow-out of hanging tree.

Plotted

SILVER STAND.
 ZEBALLOS
 SADDLE SHOWINGS
 1" = 50'
 JULY 3/64. (16)