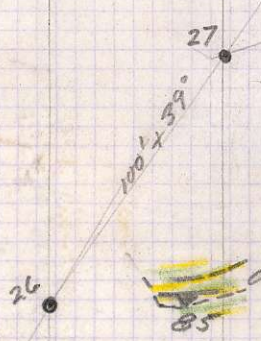
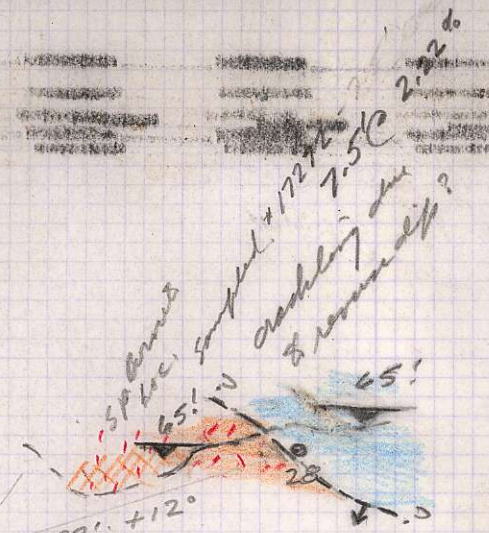


2874
 15
 2859
 14
 2845
 69
 2776



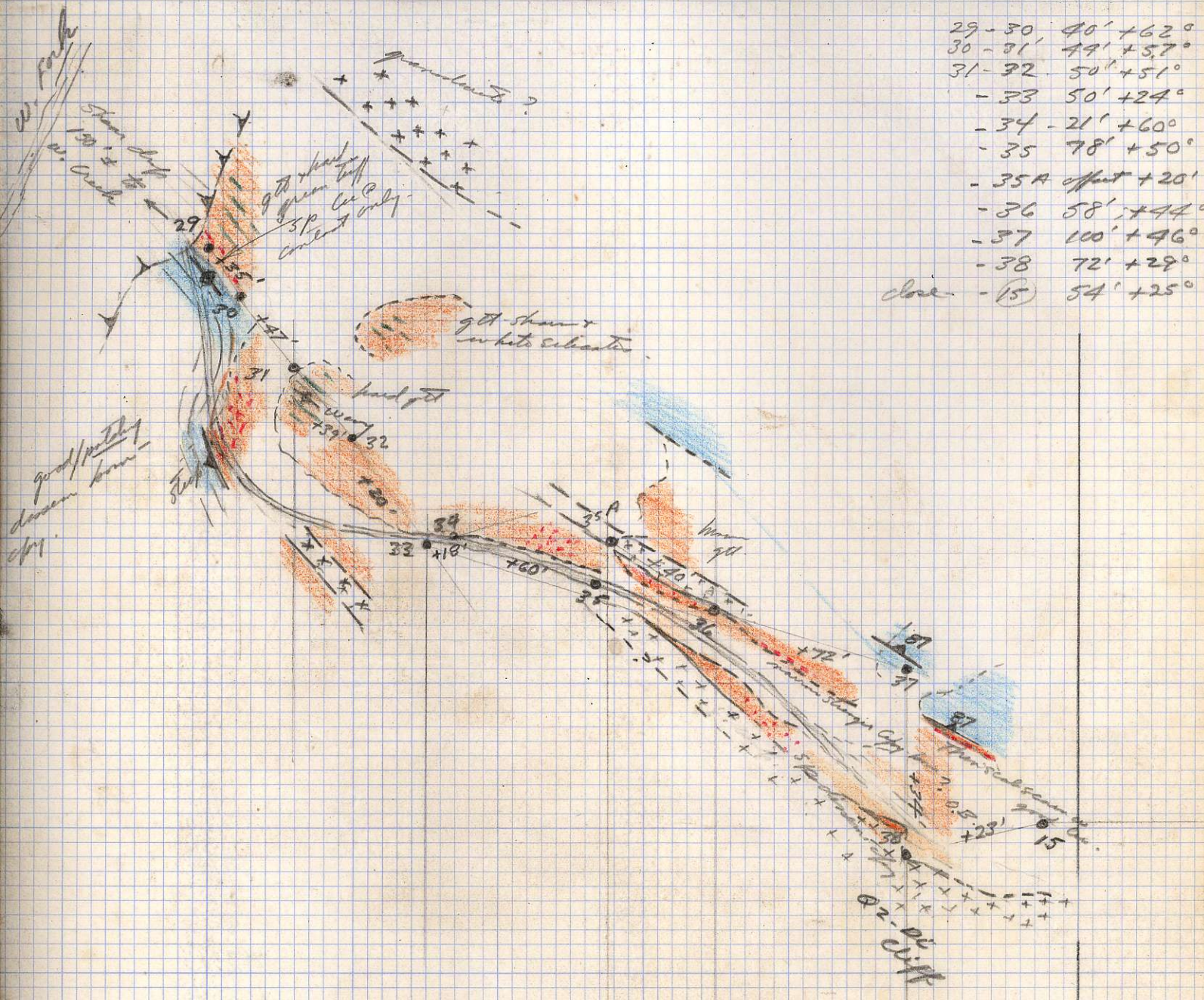
100' + 16'
 Δ El. 25'
 100' + 2 Sunny.
 9F @ 20' of top of water pad.
 9H on large root 100' of 9"
 220
 ground slope
 for
 200'

- 0+00 - 1+00 = 15°
 1+00 - 2+00 = 0°
 E-gull bench - low
- #1+2 Sunny 0+00 - 2+00 = East.
 2+00 - 3+00 = do -11°
 3+00 - 4+00 = N80E, -26/35°
 4+00 - 5+00 = N66½E -37½°
 5+00 - 6+00 = N88E -40° 38°
 6+00 - 7+00 = S88E -35°
 7+00 - 8+00 = N88E -37½°
 8+00 - 9+00 = S80E -37°
 9+00 - 9A = √577°E, 98', -34°
 -9B = √584°E 100', -35°
 -9C = √582½E 100' -31°
 -9D = √East 100', -31°
 -9E = √586½E -100', -26°
 -9F = √N82E -100' -32½°
 -9G = √527°E 17', -25°
 -9H = √574E, 116½' -41°
 -9I = √N85E; 100' -34°
 -9J = 100' -31°
 -9K = 100' -32°
 -9L = 100' -31°
 -9M = 100' -31°
 -9N = 100' -32½°

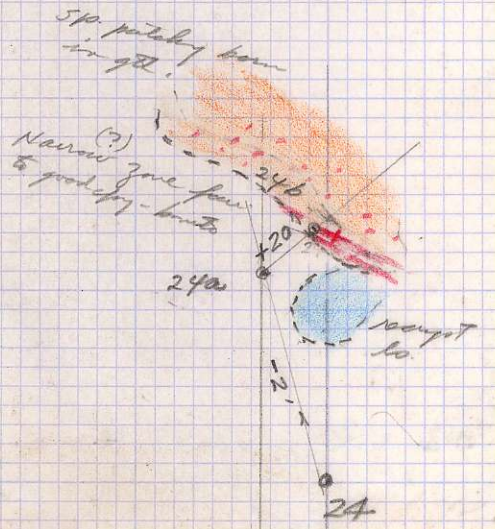
75.5 -66
 12.5 11.5
 88.0 27.5

801621

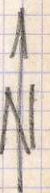
plotted
 N
 SILVER STAR
 2874
 1" = 50'
 5/24/64 (5)



S. Standard
Zebalwa
June 10/64 (10)



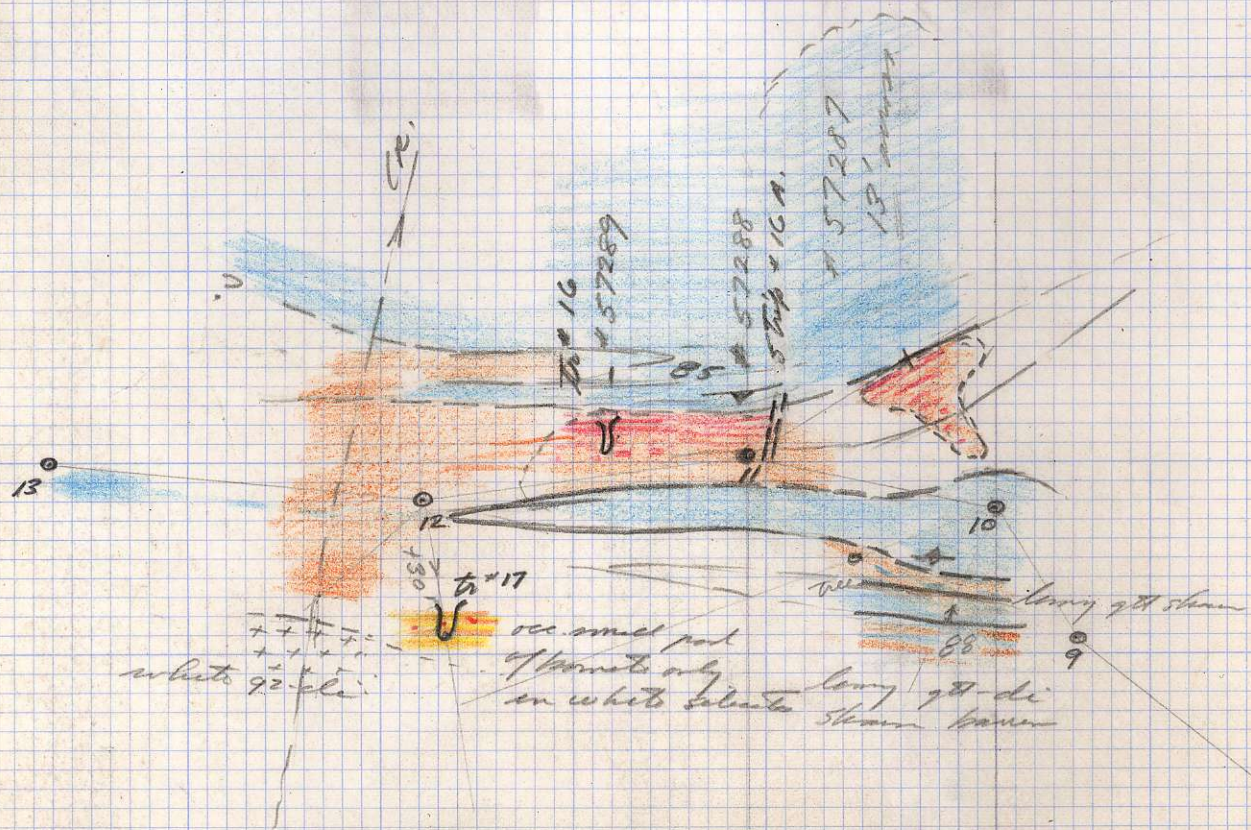
Plotted



Wms. & Jerry Tuckner

Silver Starbird
Zebulon

June 13/69 - 14250 (12)



7'-8' greenish 281 shales or sp to Fair patchy
 clay - porphyritic

Plotted



SILVER STARBUCK
 21000005
 July 2/64 1"-50 (13)