

Nov. 16/71

John notes gen. plentiful py
thra set of sp. intersected -

This could impede I.P. -
or require more dependence on
resistivity (and/or normalized data).

Should examine nature of py
occurrence (for poss. variations in
resistivity) before specifying
I.P. work

Also rock chip geophones on
cores may yield some worthwhile
data.

801491

71-9

71-9 773'

ACTUAL POSITION OF LEAD POST

NW A GROUND FL.

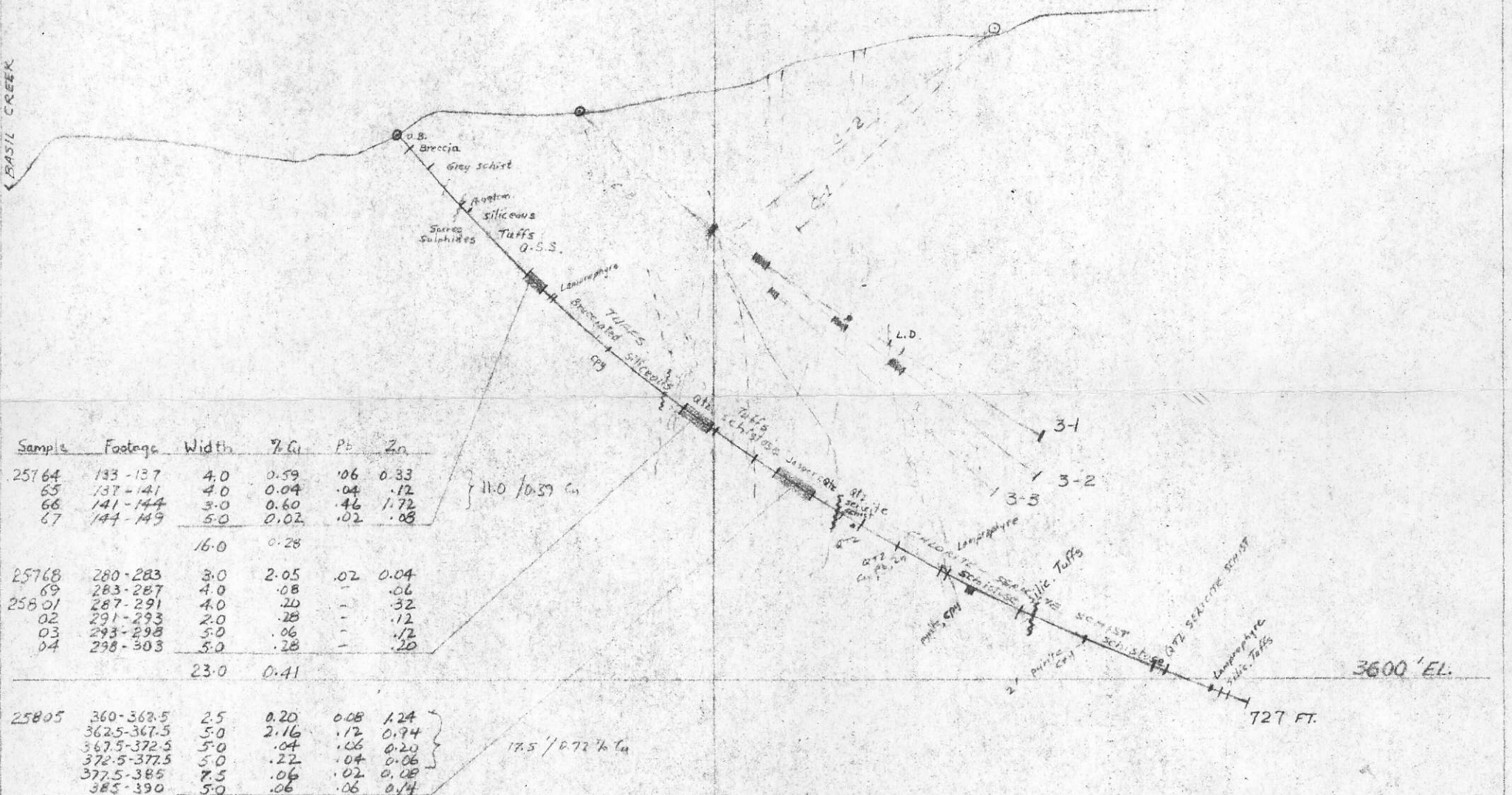
71-8

3985' EL.

727 FT

M 15	12'	0.60 Ag	3.15% Cu
M 16	10'	0.50 Ag	1.15% Cu

PLAN IN REFERENCE TO 1" = 200'
WESTERN SURF INLET MINES
AUGUST 1962



Sample	Footage	Width	% Cu	Pb	Zn
25764	133-137	4.0	0.59	.06	0.33
65	137-141	4.0	0.04	.04	.12
66	141-144	3.0	0.60	.46	1.72
67	144-149	5.0	0.02	.02	.08
		16.0	0.28		
25768	280-283	3.0	2.05	.02	0.04
69	283-287	4.0	.08	-	.06
25801	287-291	4.0	.20	-	.32
02	291-293	2.0	.28	-	.12
03	293-298	5.0	.06	-	.12
04	298-303	5.0	.28	-	.20
		23.0	0.41		
25805	360-362.5	2.5	0.20	0.08	1.24
	362.5-367.5	5.0	2.16	.12	0.94
	367.5-372.5	5.0	.04	.06	0.20
	372.5-377.5	5.0	.22	.04	0.06
	377.5-385	7.5	.06	.02	0.08
	385-390	5.0	.06	.06	0.14
		30.0	0.45		

11.0 / 0.57 Cu

17.5 / 0.72 % Cu

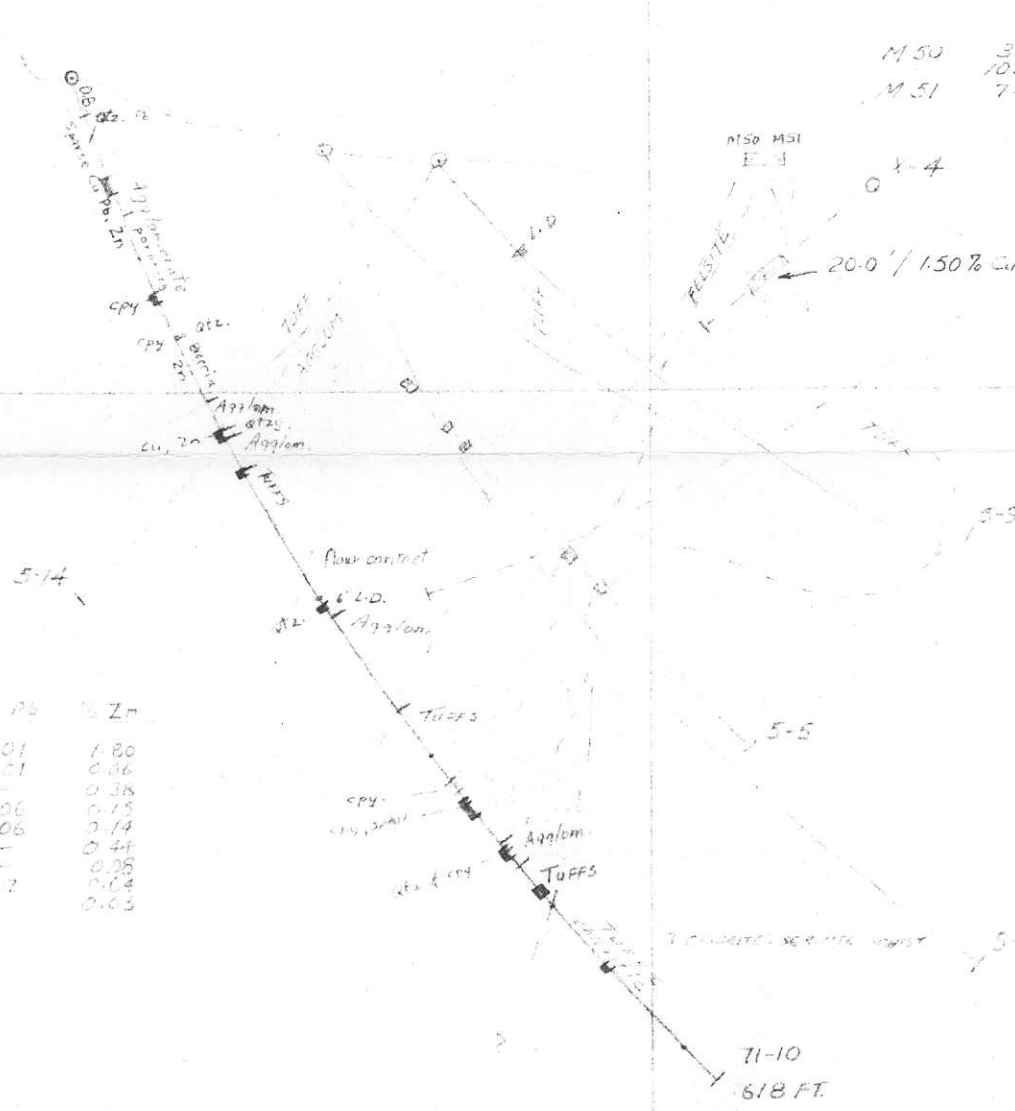
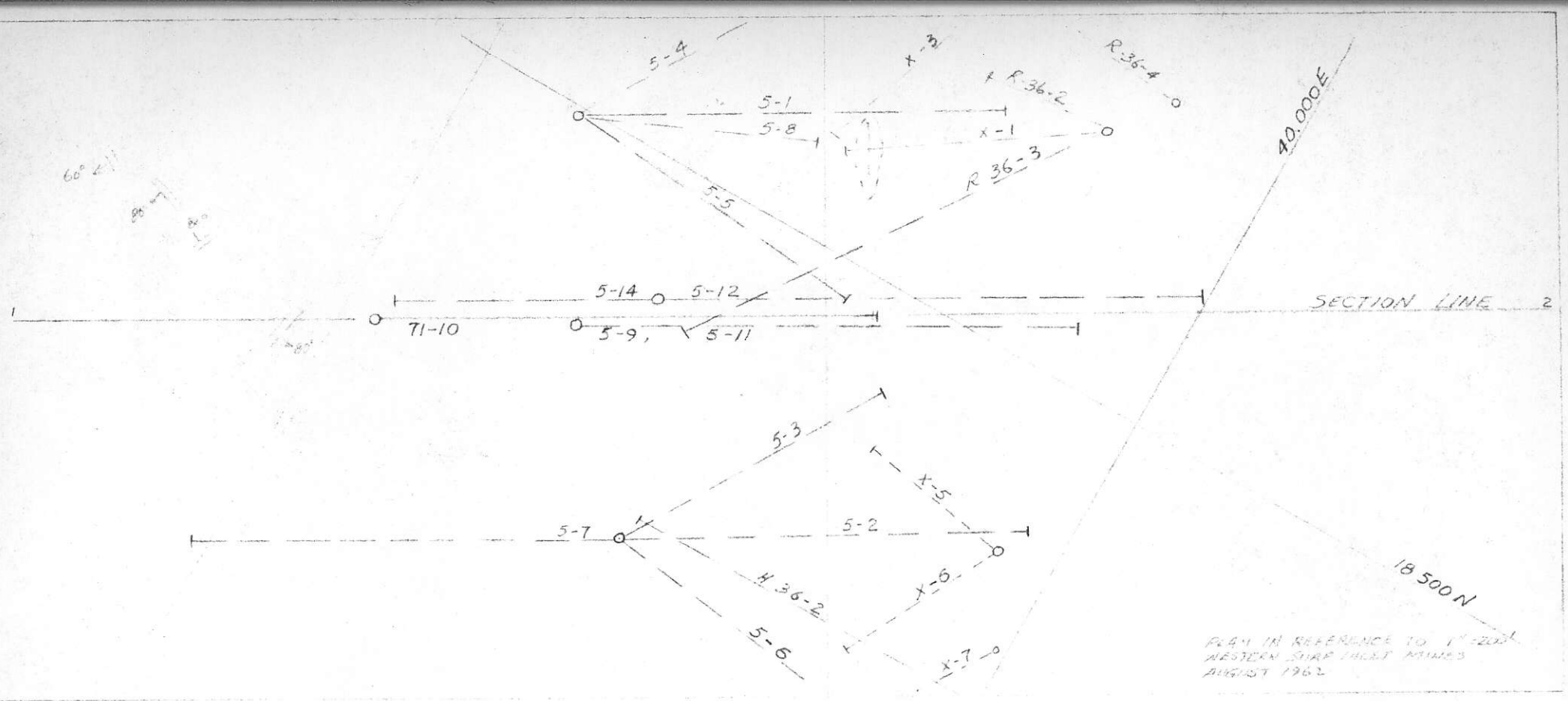
D.D.H.	Footage	Width	Ag %	% Cu	% Zn
3-1	121-123	2.0	0.4	1.6	-
	235-238	3.0	0.6	2.4	7.7
3-2	186-196	10.0	1.2	2.8	0.3
	255-270	15.0	1.1	1.5	1.8
	312-320	8.0	0.2	0.6	0.6
	322-325	3.0	1.	0.3	-
3-3	226-228	2.0	-	1.8	1.6

CROYDON MINES LTD. N.P.L.
 McVICAR PROPERTY - SQUAMISH
 D.D.H. 71-8
 SCALE: 1" = 100' 6 Oct. 1971
 JOHN E. WHITE

REFERENCE LINE

Rec'd From J. White

SECTION 17 300 N



M 50	3.0	all Ag	% Cu	% Zn
M 51	7.0	1.4	3.1	tr
		not sampled - visually low		
		0.75	3.3	tr

FOOTAGE	WIDTH	% Cu	% Pb	% Zn
54-64	10.0	0.18	0.01	1.80
119-124	5.0	0.30	0.01	0.86
199-204	5.0	0.01	-	0.38
222-225	3.0	0.10	0.06	0.15
304-308	2.0	0.04	0.06	0.14
428-440	12.0	0.07	-	0.44
461-467	6.0	0.14	-	0.06
483-494	5.0	0.86	0.02	0.64
540.5-543.5	3.0	0.23	-	0.63

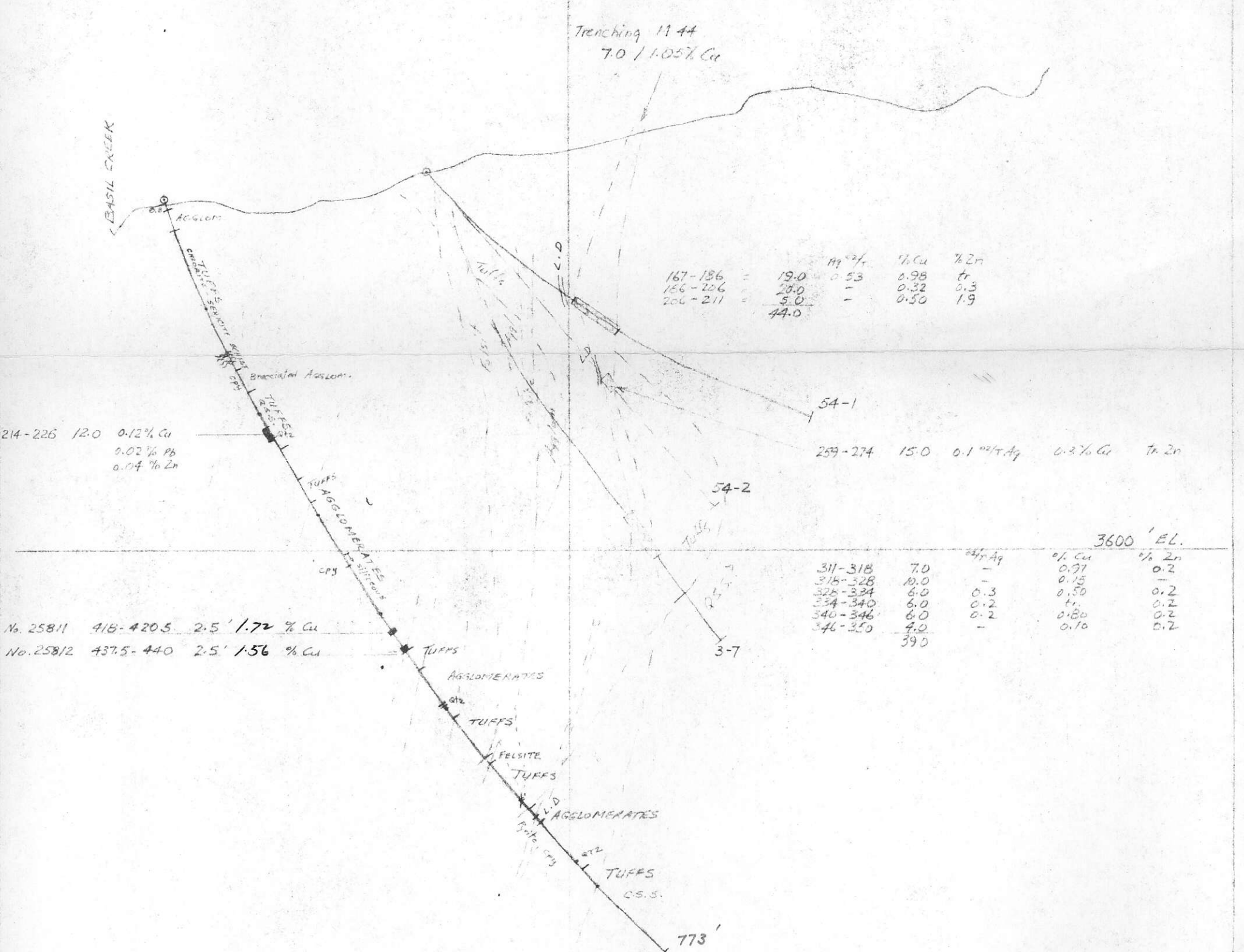
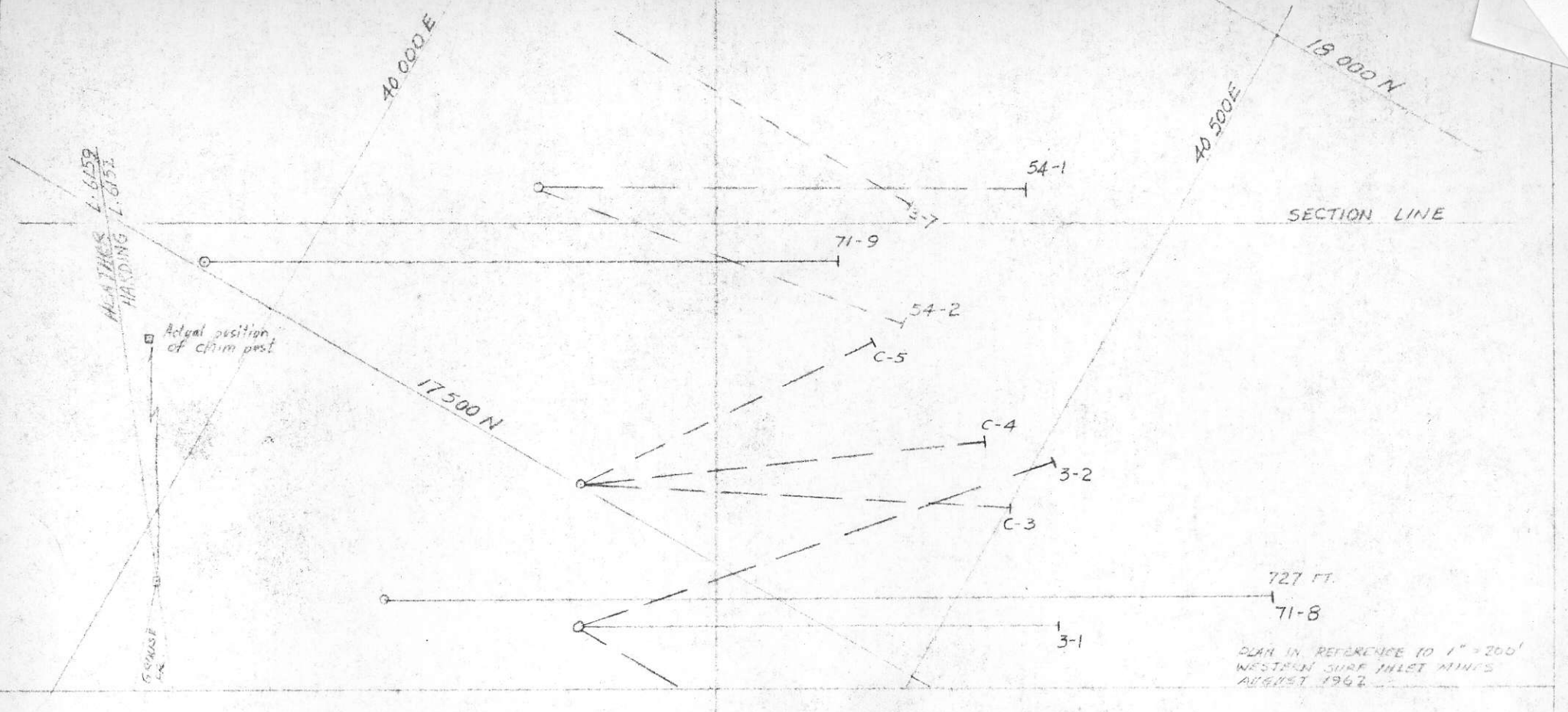
#	5-5	WIDTH	% Pb	% Cu	% Zn
94-103	7'	0.20	0.50	0.10	
117-121	4'	0.20	0.50	0.80	
142-146	4'	tr	-	1.70	
243.5-248.5	5'	0.45	2.80	1.20	
269.5-271.5	2'	0.10	0.25	0.70	

CROYDON MINES LTD. N.P.L.
MINERAL PROPERTY - SQUAMISH

D.D.H. 71-10

SCALE: 1" = 100' 11 OCT. 1971
JOHN E. WHITE

Rec'd from J.W. SECTION 18,470N



	Ag %	% Cu	% Zn
167-186 =	19.0	0.53	0.98 tr
186-206 =	28.0	-	0.32 0.3
206-211 =	5.0	-	0.50 1.9
	44.0		

214-226 12.0 0.12% Cu
0.02% Pb
0.04% Zn

259-274 15.0 0.1% Ag 0.3% Cu tr Zn

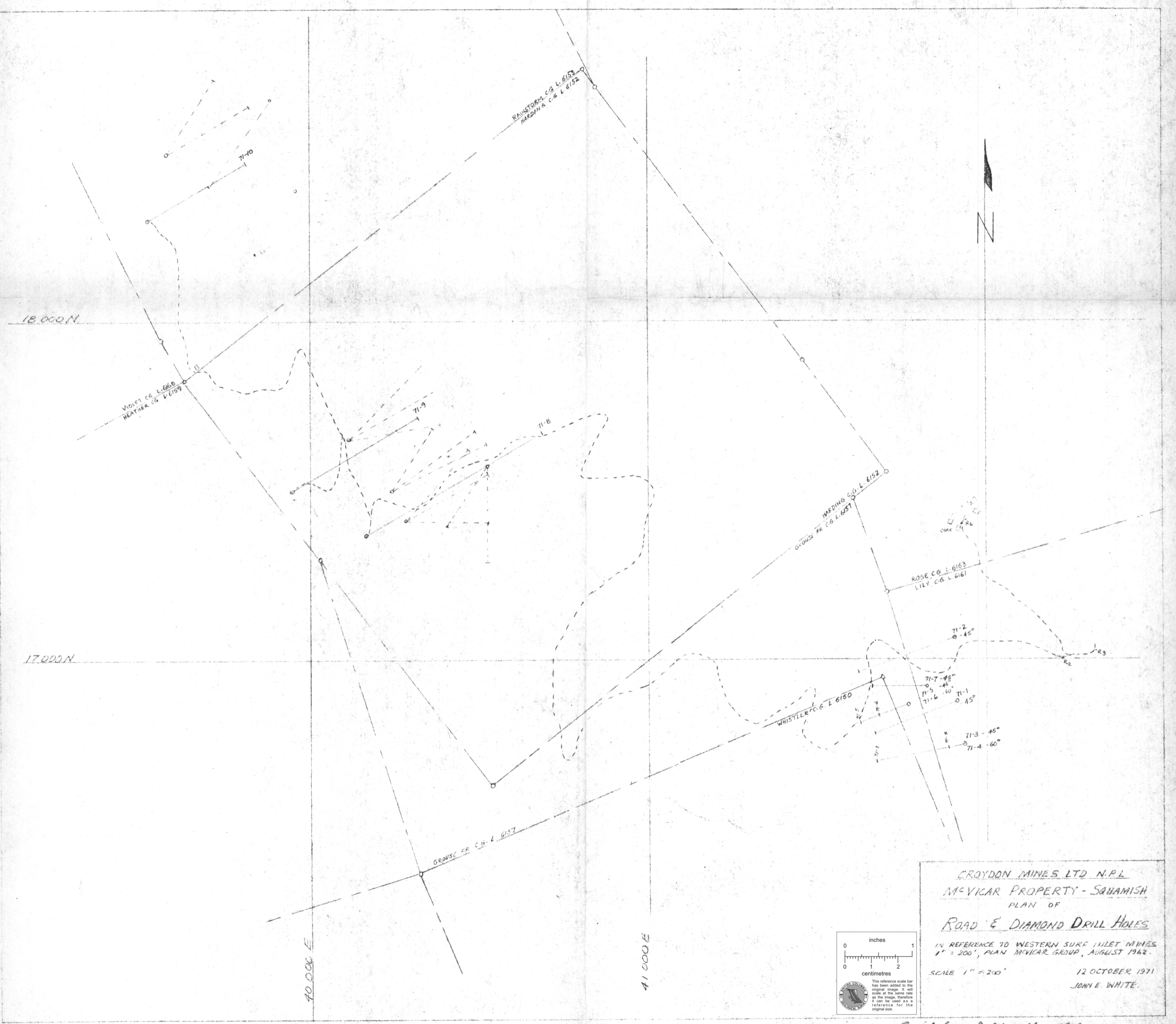
No. 25811 418-420.5 2.5' 1.72% Cu
No. 25812 437.5-440 2.5' 1.56% Cu

3600' EL.

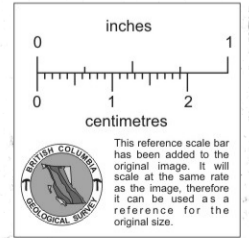
	% Ag	% Cu	% Zn
311-318	7.0	0.91	0.2
318-328	10.0	0.15	-
328-334	6.0	0.50	0.2
334-340	6.0	tr	0.2
340-346	6.0	0.80	0.2
346-350	7.0	0.10	0.2
	39.0		

CROYDON MINES LTD. N.P.L.
MVICAR PROPERTY - SQUAMISH
D.D.H. 71-9
SCALE 1" = 100' 8 OCT. 1971
JOHN E. WHITE

Field from J.W.
Nov. 16/71



CROYDON MINES LTD N.P.L.
 McVICAR PROPERTY - SAHAMISH
 PLAN OF
 ROAD & DIAMOND DRILL HOLES
 IN REFERENCE TO WESTERN SURF INLET MINES
 1" = 200', PLAN McVICAR GROUP, AUGUST 1962.
 SCALE 1" = 200'
 12 OCTOBER 1971
 JOHN E. WHITE.



Rec'd from J.W. Nov 16/71