

perhaps further N.  
 approx loc of most northerly C.P. of  
 the main Gp. - Basil Zurbreger  
 assigned by Peter Wyssens  
 2 - Swiss

slightly bl-  
 sch (tal.)

gray green silic sch

mar  
 gray  
 sch.

old K100W electroly. sta?

shear & bl.  
 (mass) light  
 finely white  
 speckled

(curved)  
 SW.L. 6160 Whistler M.C.  
 F.P. A63029 B.Z.  
 I.P. A24833

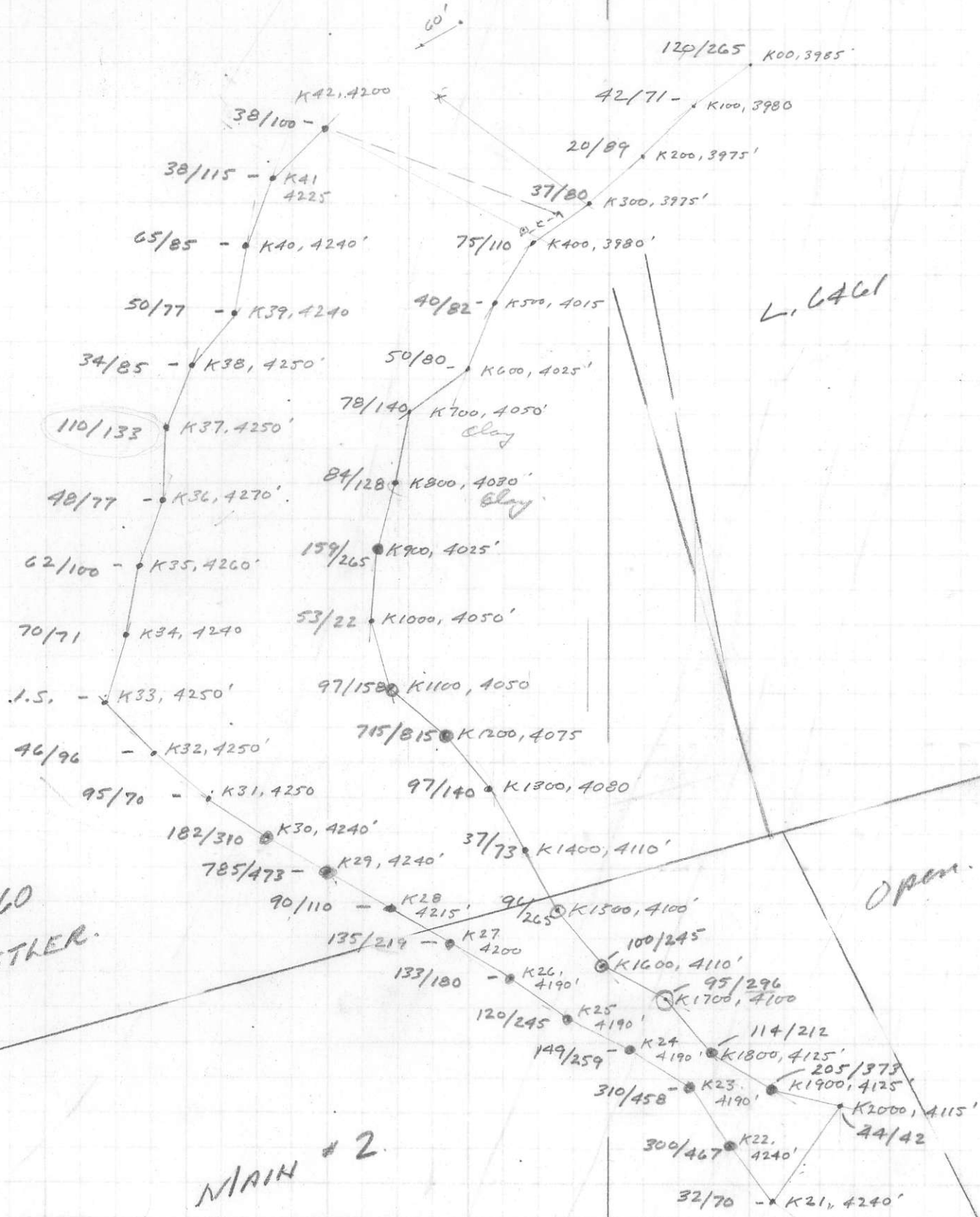
I.P. AG3033  
 I.P. AG3032

W.A. v.a.s  
 Kennedy Silic  
 Mt. Baldiwin Prop  
 Squamesh area  
 The traverse cont'd  
 1" = 200', Oct. 26/69

801489

23-30

B



L. G. 160  
WHISTLER.

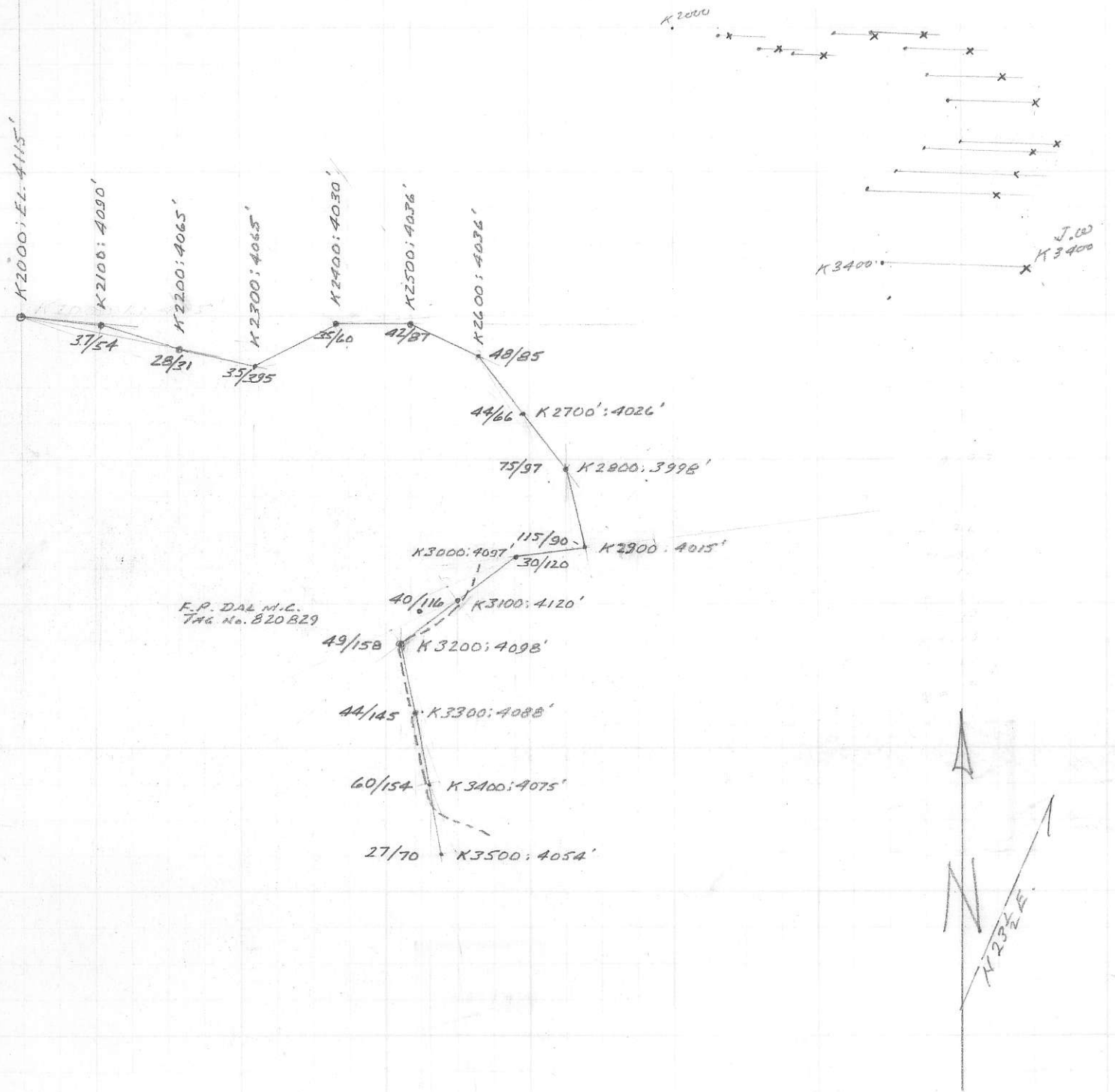
L. G. 661

Open.

MAIN # 2.

Cord. Camp 2m P.P.M.

GEOCHEM TRAVERSE  
MT. BALDWIN. Oct. 12/69  
1" = 200'. W.S. & A. SUEWING



KENNEDY SILVER MINES LTD (NPL)  
 RE: MT. BALDWIN CU-ZN PROSPECT.  
 EXTENDED GEOCH. RECONNAISSANCE  
 SCALE, 1" = 200' SURVEY, NOV. 15, 1969  
 BY: W. SHARP,  
 J. FEHRE,  
 A. SHERRO

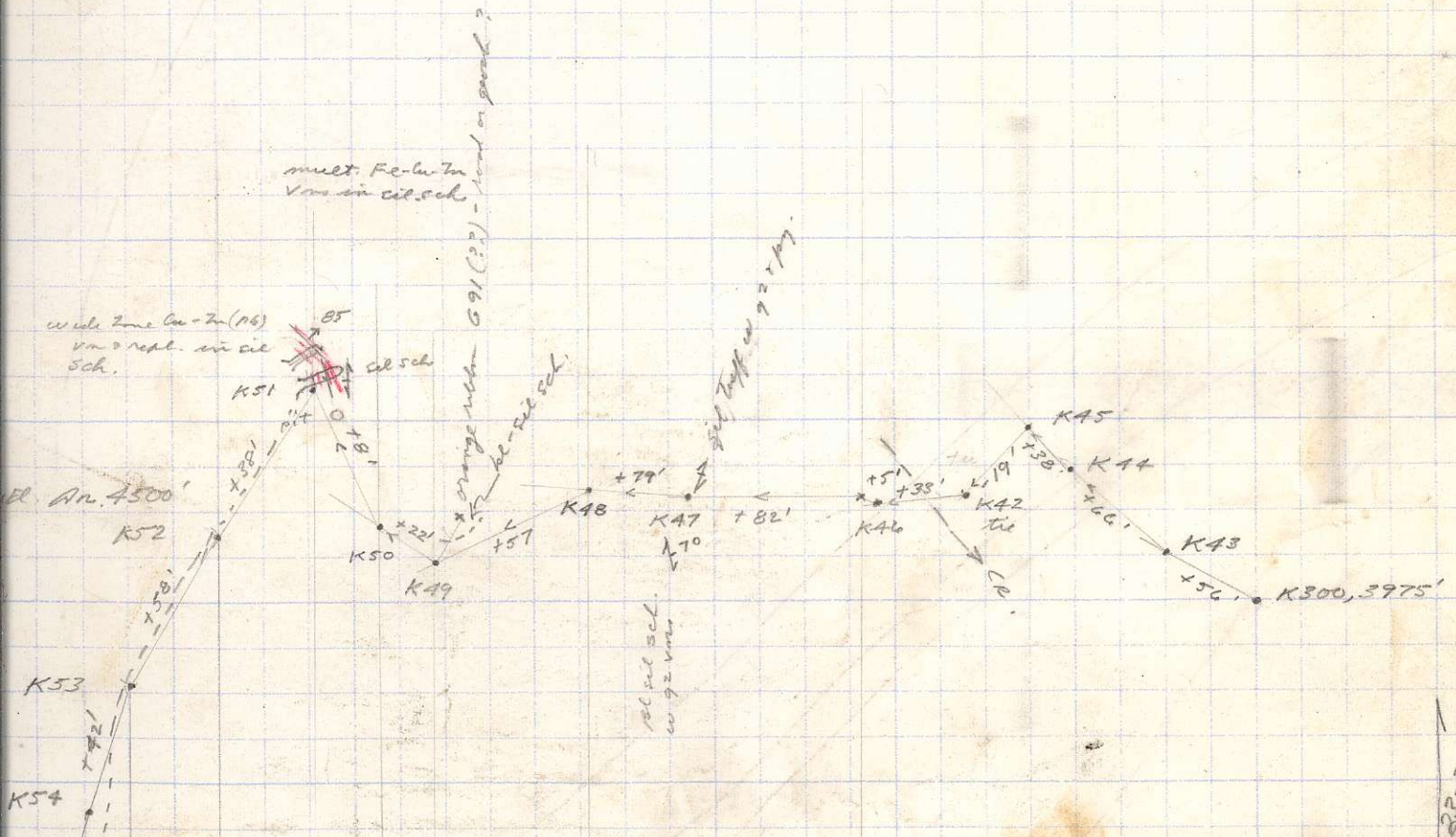
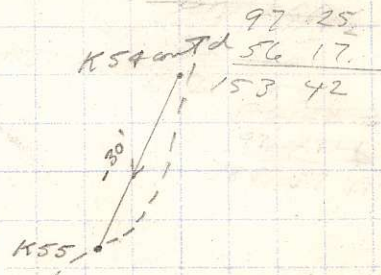
5015 AS. CU/ZN. TOTAL P.P.M.



3  $\frac{39}{13}$  40

55  
 8th 3  
 16th 6  
 24th 9  
 32nd 12  
 40th 15

90 48



*Hennedy Schen*  
 M.T. Baldwin Prof  
 Tiefbau, 1<sup>st</sup> 200'  
 Oct 26/69 W.S.O.A.