

NELSON RIVER

ag - by diorite (dykes)

Quartz Silver M.C.'s #'s 1-4 incl. ^{tag} Record No's

Rec'd. Aug, 1968

Quartz Silver M.C.'s #'s 1-6 incl., Tag #'s 697123 to 697126 and
845193 & 845194

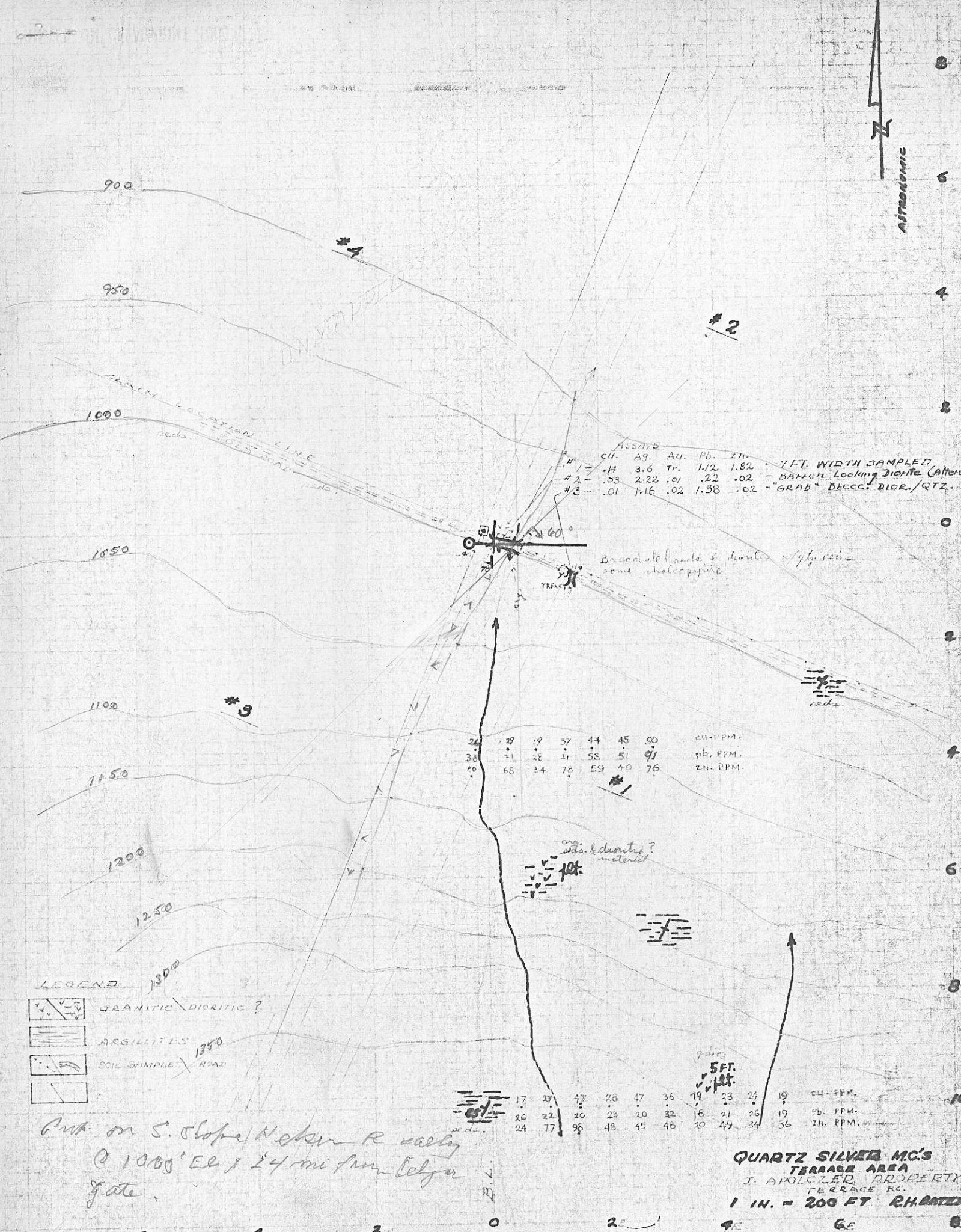
Located (M.C.'s # 1-4) June 11th, 1968 } by John Apolczer , Terrace, B.C.
(M.C.'s # 5 & 6) July 14th, 1968 }

.....

1/3 interest to R.H. Bates by
Bill of sale dated July 30th, 1968
R e c o r d e d July 30th, 1968 at Terrace.

*Record no's pending, if R.H.B. elects to
acquire the group*

801436



ANALYSES

	CU.	AG.	AU.	Pb.	ZN.	
#1	.14	3.6	Tr.	1.2	1.82	- 7 FT. WIDTH SAMPLED
#2	.03	2.22	.01	.22	.02	- BARRER Locking Diorite (Altered)
#3	.01	1.16	.02	1.38	.02	- "GRAB" DRILL. DIOCR./QTZ.

Dracoidal beds of diorite w/ qtz veins - some chloropite.

24	29	19	57	44	45	50	CU. PPM.
38	41	28	11	58	51	91	Pb. PPM.
60	66	34	73	59	40	76	ZN. PPM.

one beds of diorite? material

- LEGEND
- GRANITIC DIORITIC?
 - ARGILLITES
 - SOIL SAMPLE ROAD

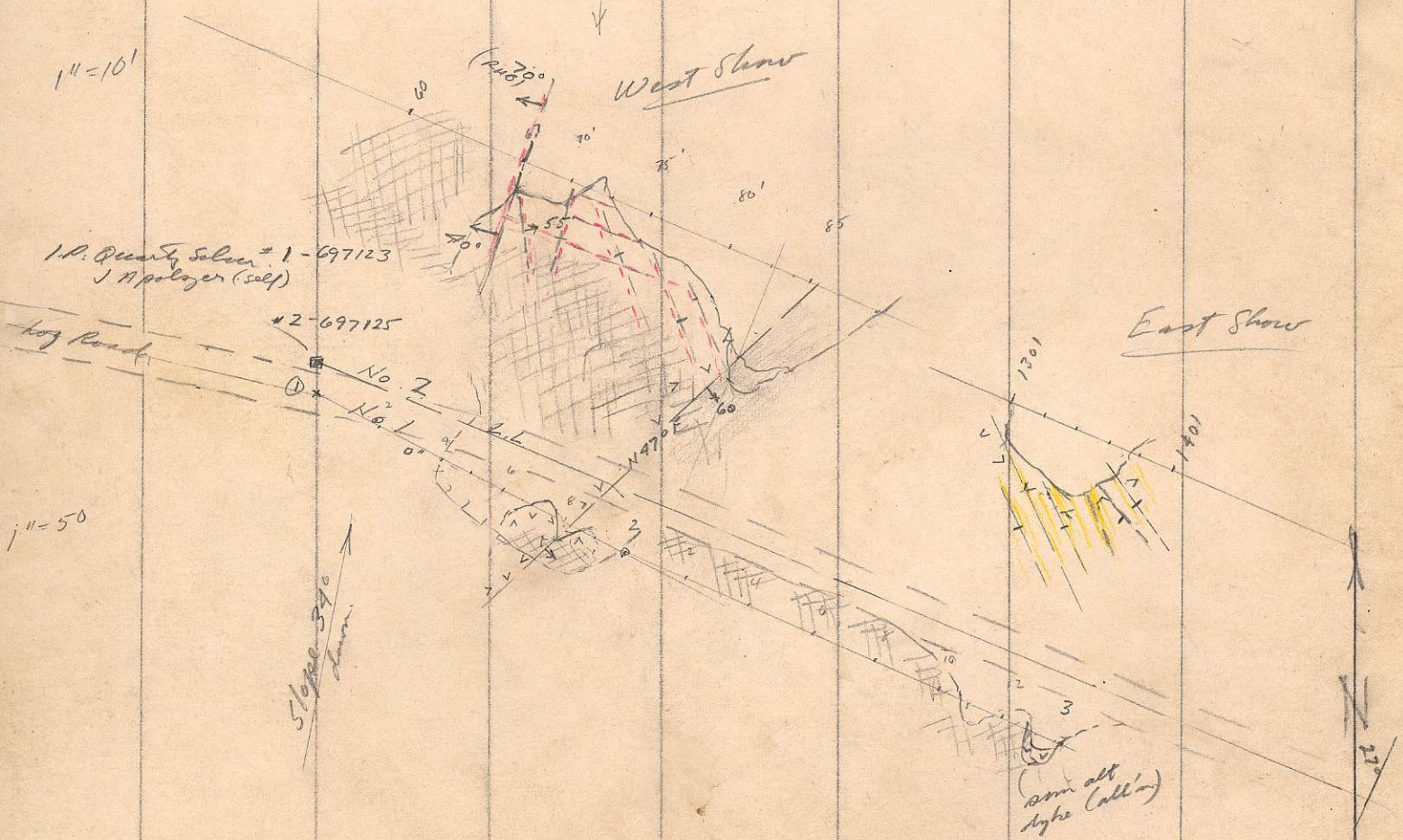
Cont. on S. slope Nelson R valley @ 1000' E & 24 mi from Belgate gate.

17	27	47	26	47	36	19	23	24	19	CU. PPM.
20	22	20	23	20	32	18	21	26	19	Pb. PPM.
24	77	98	43	45	48	20	42	34	36	Zn. PPM.

QUARTZ SILVER MC'S TERRACE AREA
J. APPLICED PROPERTY TERRACE, KC.
1 IN. = 200 FT. R.H. BATES

~~good exploration but~~
~~for large, low to mid grade silver deposit~~

albite-actinol dykes, mod. hard (note striated fields)
 pale green) Talc albite
 galena, sp. py, dark sphal on vari-angle fractures
 + dispersed on rock mass (currently exposed
 = sparse dispersion)



Quartz Silver,
 Nelson R. Area
 N.W. of Terrace
 Apolizer + Bates
 1" = 50' + 1" = 10'
 Aug 5/68