

221 N. H. Line of 1970 grid
 -12°
 116'
 (20 N. c.n.)
 -16°
 84'
 19 N L.
 -18°
 100.5'
 (18 N)
 100'
 -18°
 17 N L.

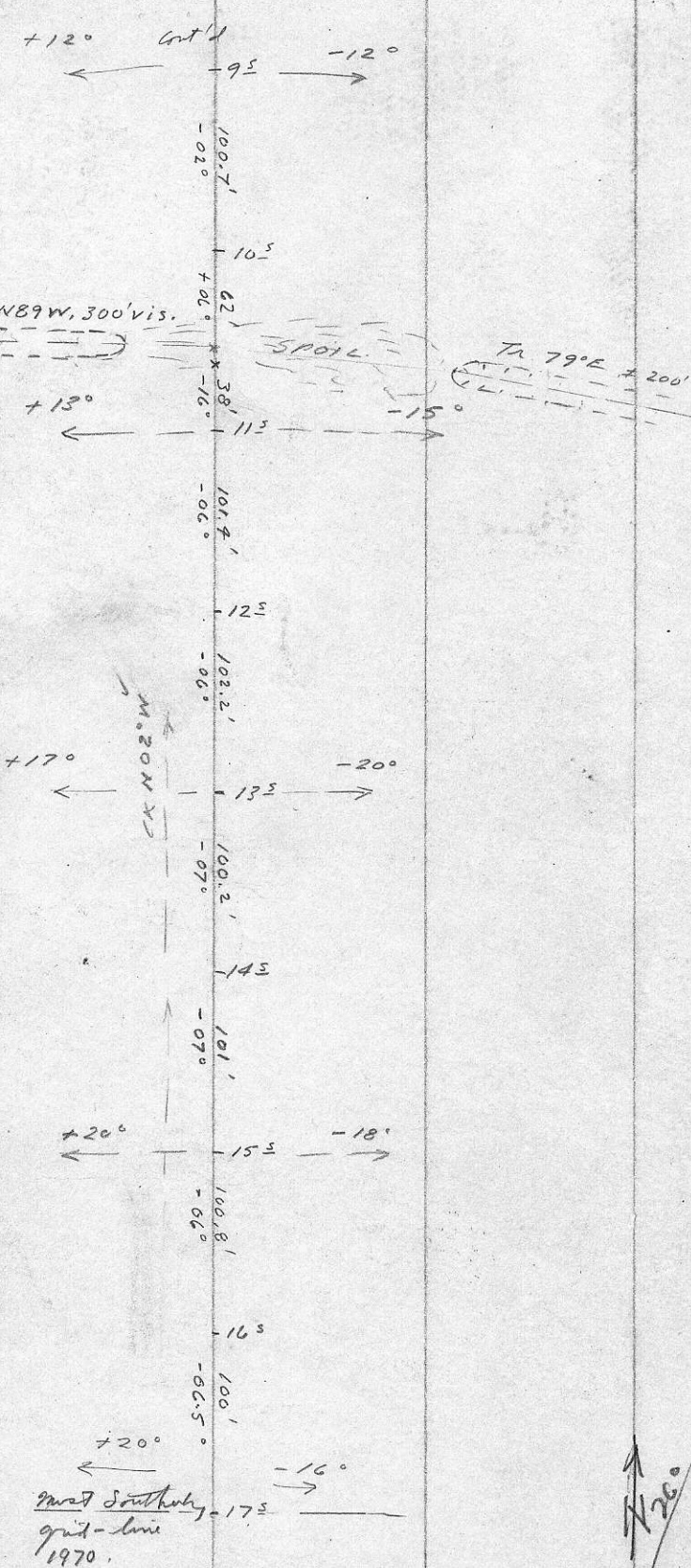
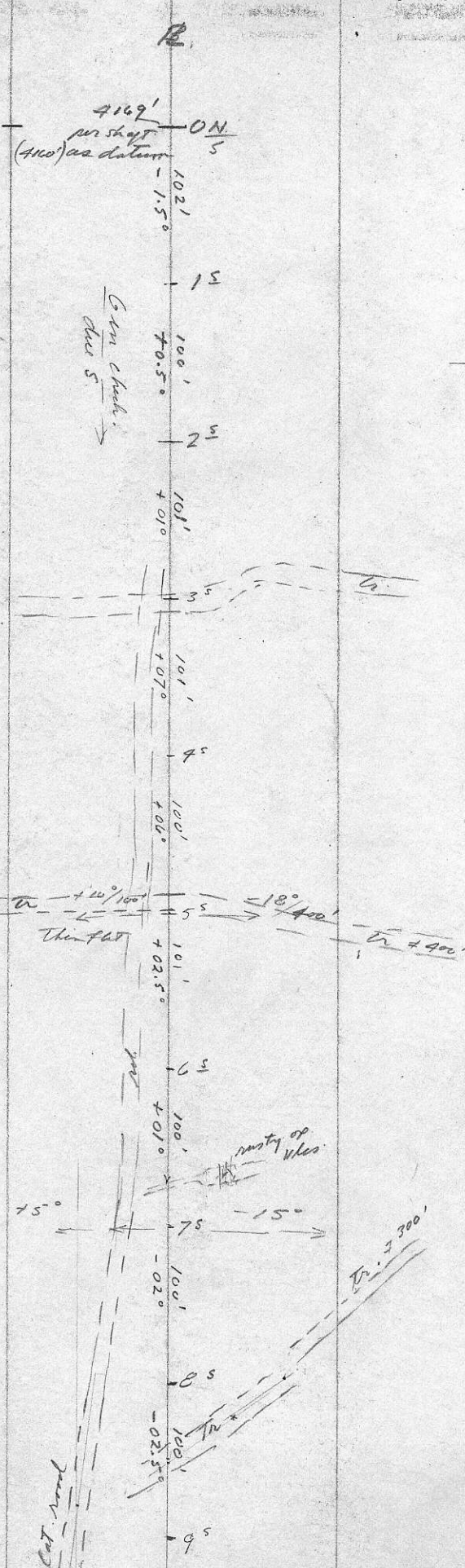
2 x 200' 1/2" = 200' 1/2" N. L. 2
 13 N L.
 -11°
 100.8'
 (17 N)
 -11°
 100'
 15 N L.
 -13°
 102.5'
 (16 N)
 -14°
 81' ← !
 -17°
 108.5'
 12 N
 -10°
 108'
 10 N
 -10.5°
 106.5'
 9 N
 -04°
 103.5'
 8 N
 -04°
 101'
 7 N L.

8 N
 -14°
 109'
 7 N
 -08°
 104'
 6 N
 -04.5°
 100.5'
 5 N
 -07.5° + 01°
 31'
 70'
 4 N
 -09°
 101'
 3 N
 -02°
 105'
 2 N
 -01°
 101.5'
 1 N
 -01.5°
 102.5'
 0 N/S

flat ←

+10° ←

NORTH END
 CHECK SURVEY
 SANTA MARIA GRID (B.L.)
 Sept 25/70 1" = 100'
 W.S. + G.H.D.



SOUTH-END
 Check Grid Survey
 Santa Maria
 Sept. 25/70. 1"=100'
 U.S. & G.H. O'Shea

1-5

2W Col 88.5'S of 1-5

B.L

CH 1W
CH 1-5
49 x 10
450

Col #8
C 10' N of
line

7N

6W
Nearby (?)
O.B.

CR. DESD O.B.

4+W - Major Anom
6+40W - Minor Anom

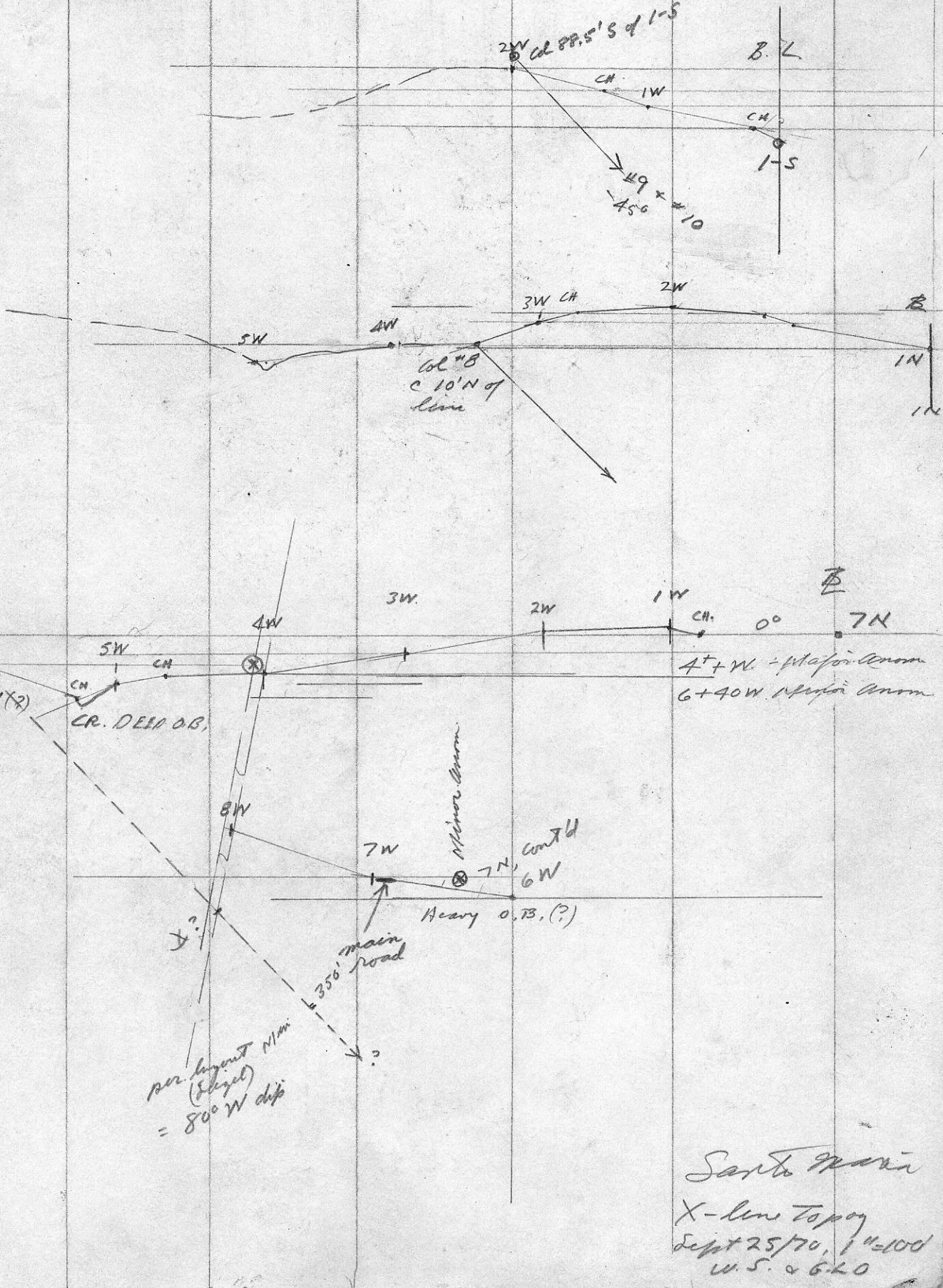
Minor Anom

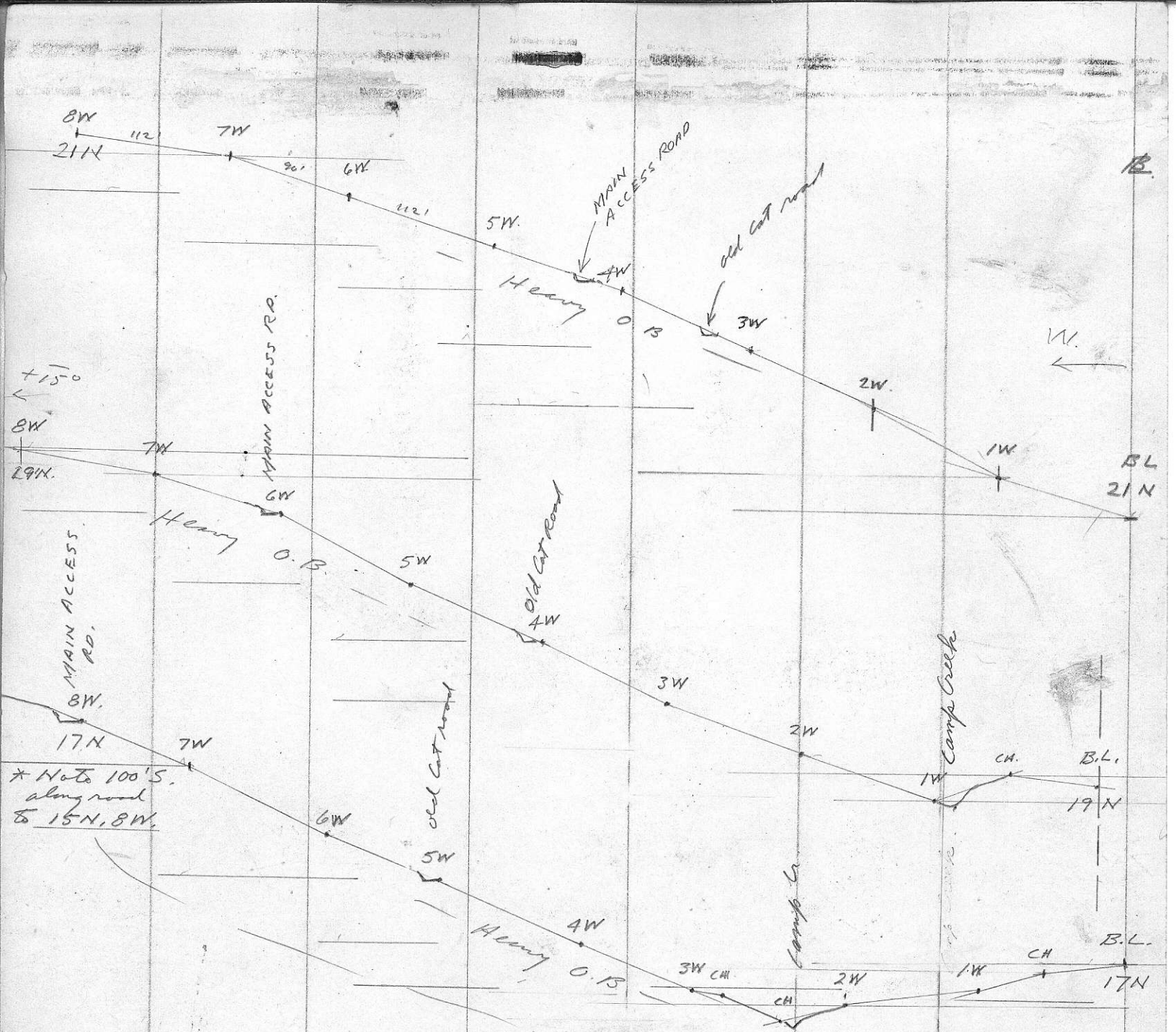
Nearby O.B. (?)

main road

per layout N1m
(Elyse)
= 80° W dip

Santa Maria
X - line Topog
Sept 25/70, 1"=100'
W.S. & G.L.O





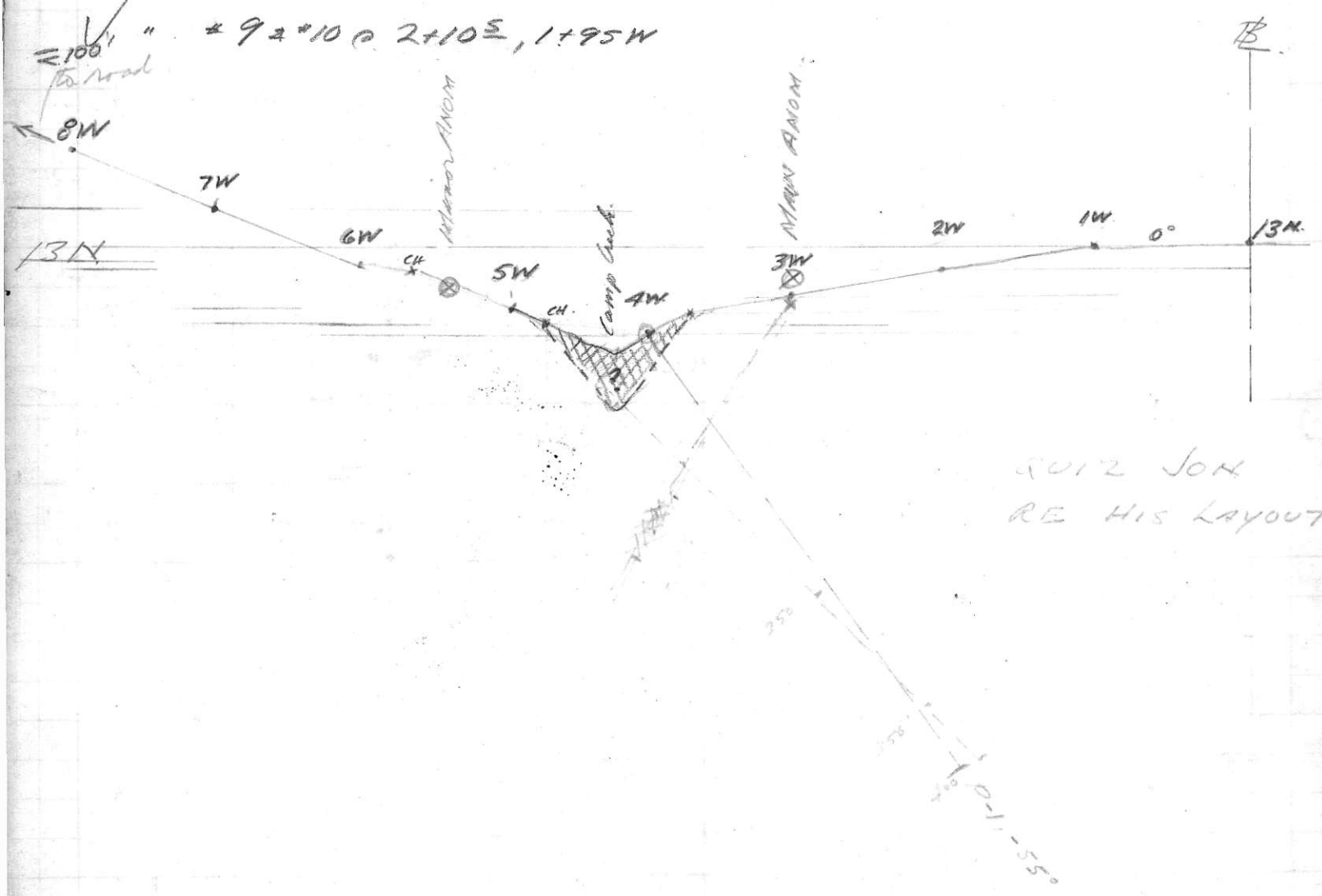
* Note 100'S. along road to 15N, 8W.

→ Skip line 15N -
 converges close to 17N (100' south of 17N)
 Hence can use similar sect to 17N or
 partly intermediate per creek plot in
 17N & 13N.

(paired Kern interval) Grid-Line Topog
 Santa Maria
 Sept 26/70 1"=100'
 M.S. + Gary

- Expect to pick up
- ✓ DDH # 4 @ 10+30N, 1+70E
 - ✓ " # 5 @ 5N, 2+15W
 - ✓ " # 6.4 # 7 @ 3N, 3+15W
 - ✓ " # 8 @ 1+10N, 3+15W
 - ✓ " # 9 # 2 # 10 @ 2+10E, 1+95W

100' to road



QUIZ JON
RE HIS LAYOUT

X-line trying to
50' x 25' / 10' = 100'