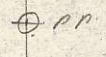


10400E

10450E

10500E



modified

4625 W (X.C.)

Elev. 4636

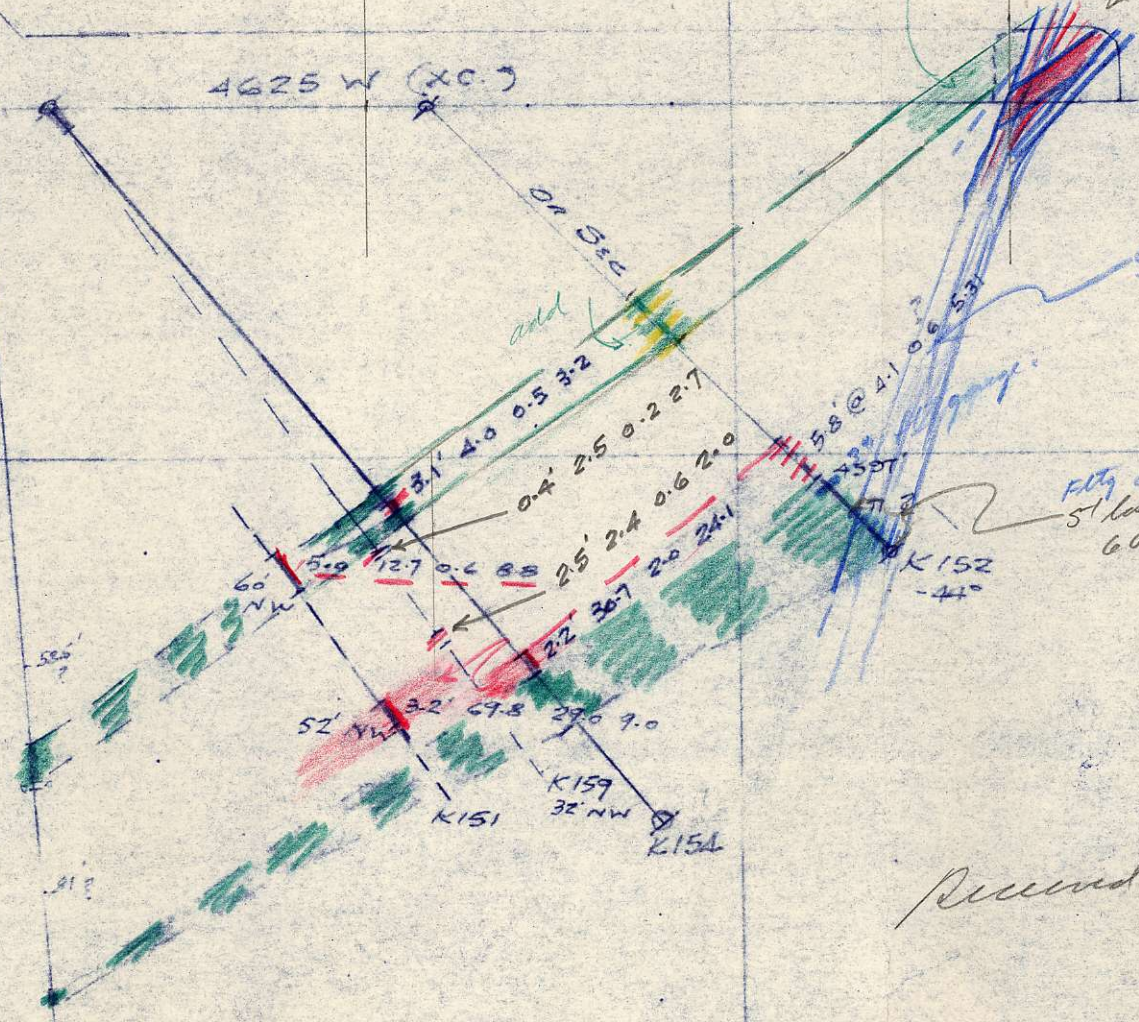
add
0.7 Sec

add

Elev. 4600'

*fly added for
5' test core e.
60'-67'*

Avg Dip $\approx 35^\circ$ S.W.



Received Jan 10/73

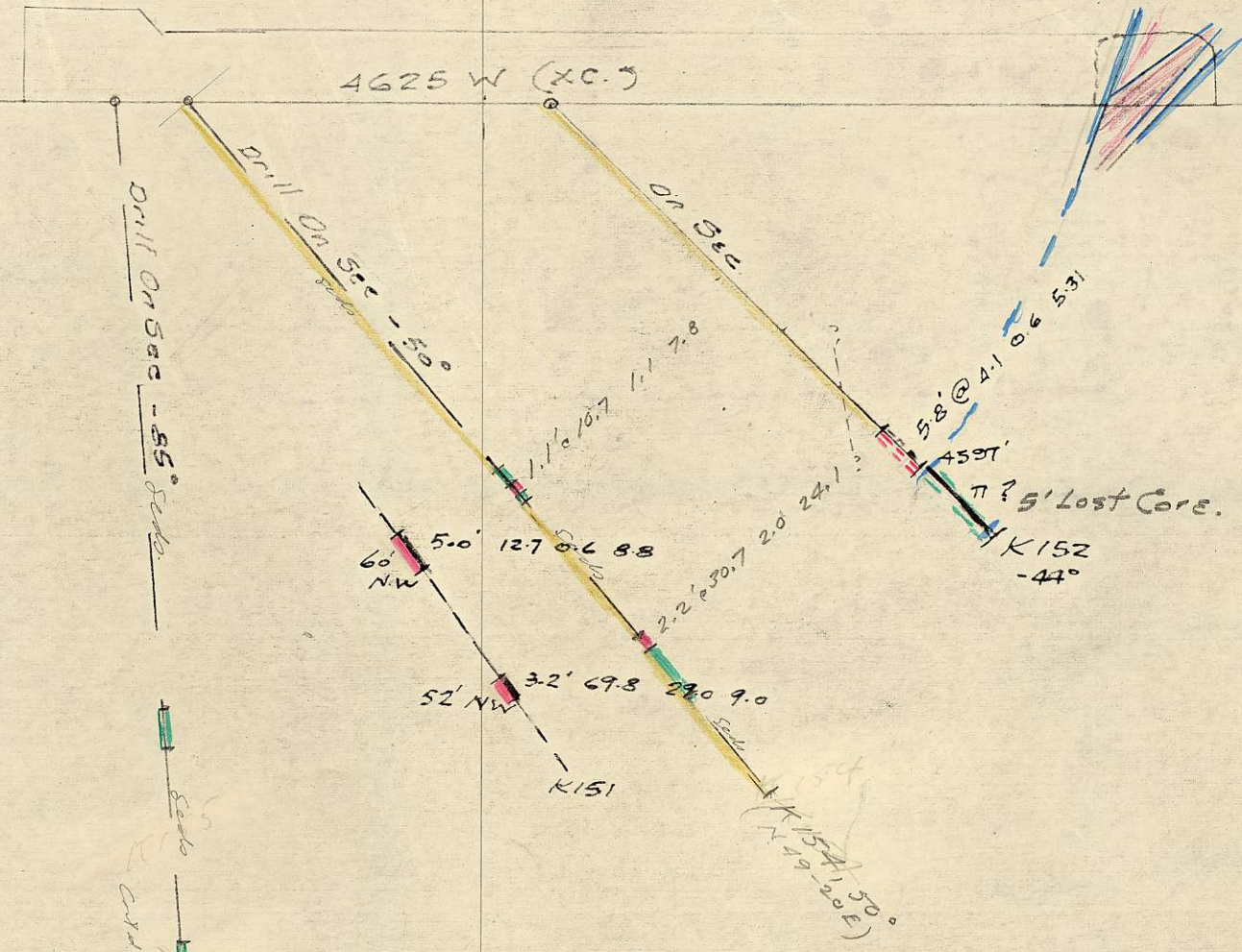
TRUE DIP SECTION (S50W)

1" = 20'

Dec 8-72

801203

simplified
rep. of geol.
(@ face?)



881.4636.

137.5-149 (Parker TR)
93-137.5' geol.
K155 85°
N32.2 E, 149'

10450 E.

TRUE DIP SECTION (S40W)

1" = 20'

Dec 8-72

Revised Dec 11/72 (by hand)